



RED SWASTIKA SCHOOL

RED SWASTIKA SCHOOL
2012 SEMESTRAL ASSESSMENT 1
ENGLISH LANGUAGE – PAPER 2
LANGUAGE USE AND COMPREHENSION
PRIMARY 6

Name : _____ ()

Class : Primary 6 / _____

Date : 10 May 2012

BOOKLET A

30 Questions

30 Marks

Duration of Paper: 1 h 50 min

Note:

1. Do not open this booklet until you are told to do so.
2. Read carefully the instructions given at the beginning of each part of the booklet.
3. Do not waste time. If a question is difficult for you, go on to the next one.
4. Check your answers thoroughly and make sure you attempt every question.
5. In this booklet, you should have the following:
 - a. Page 1 to Page 10 (including 1 blank page)
 - b. Questions 1 to 30

Study the following advertisement and then answer questions 1 to 5.

Looking for a NANNY to care for your young ones?

South West
Community Development Council

Are you looking for a nanny to take care of your young ones on a regular basis, on odd occasions or do you simply need a nanny to help fetch your young ones to and from school? Whatever your needs are, our Nannies @ South West will be able to assist!

We know how important it is to leave your young ones in the safe hands of a trusted nanny. Hence, our Nannies @ South West have been specially selected to ensure that they have the relevant experience and expertise.



Under the Nannies @ South West programme, we can help you with your baby sitting and child care needs. Since our inception in June 2010, we now have more than 40 available nannies.

Most of our nannies have undergone various nanny training programmes with our training partners such as SEED Institute and Gleneagles Medical Centre. Topics that were covered include care-giving skills: safety, health, hygiene and nutrition.

All our nannies are bilingual. They have at least 2 years of experience caring for children and toddlers, and they possess a strong passion for taking care of the young.

South West
Community Development Council

*Connecting nannies with parents on
child care arrangement*

Another initiative by South West CDC

Contact us now at 68775544
or email to
recruitment@southwest.org.sg for
a list of our nannies!

South West CDC will not be providing any matching and assumes no responsibility for the use of their services. The specific terms and conditions for the service engagement such as cost, venue and schedule will be made between the parents and the nannies.

For each question from 1 to 5, four options are given. One of them is the correct answer. Make your choice (1, 2, 3 or 4). Shade the correct oval (1, 2, 3 or 4) on the Optical Answer Sheet.

(5 marks)

- 1 The programme was introduced by _____
- (1) SEED Institute
 - (2) South West CDC
 - (3) Nannies @ South West
 - (4) Gleneagles Medical Centre
- 2 The main aim of this advertisement is to _____
- (1) train potential nannies
 - (2) match parents to nannies
 - (3) encourage parents to hire nannies
 - (4) provide assistance to parents who need nannies
- 3 In the training centres, the nannies were not taught how to _____
- (1) connect with parents
 - (2) prepare healthy food
 - (3) fetch children to and from school safely
 - (4) ensure safety and cleanliness at home
- 4 Mrs Yeo wants to hire a nanny. She needs to _____
- (1) choose one from SEED Institute
 - (2) wait for matching to be done by South West CDC
 - (3) send one for training at Gleneagles Medical Centre
 - (4) select one from a list provided by South West CDC
- 5 According to the advertisement, which of the following is not true? The nannies _____
- (1) can only speak one language
 - (2) can be hired on an irregular basis
 - (3) must have a passion for taking care of young children
 - (4) must have at least two years of experience in child care

BLANK PAGE

For each question from 6 to 12, four options are given. One of them is the correct answer. Make your choice (1, 2, 3 or 4). Shade the correct oval (1, 2, 3 or 4) on the Optical Answer Sheet.

(7 marks)

6 Hayley could not believe her rotten luck, _____ to babysit her brother and work on her holiday homework.

- (1) has
- (2) have
- (3) had
- (4) having

7 "Here at the shearing shed, sheep _____ sheared once a year for their woollen fleece," explained the shearer.

- (1) is
- (2) are
- (3) was
- (4) were

8 "It was I, not my daughters, who prepared the food for the picnic all by _____," declared Mrs Tan indignantly.

- (1) myself
- (2) herself
- (3) ourselves
- (4) themselves

9 _____ he was heavily criticised by the panel of judges, Johan was satisfied with his own performance in the preliminary round of Singapore Star.

- (1) Since
- (2) Unless
- (3) Because
- (4) Although

10 The Principal congratulated the Athletics team _____ their achievement at the recent National Track and Field Meet.

- (1) in
- (2) to
- (3) on
- (4) with

11 _____ of the pupils wants to audition for the role of the wicked witch.

- (1) All
- (2) Any
- (3) None
- (4) Some

12 Kai Meng was _____ late for appointments. Hence, his absence at the prefect meeting was very puzzling.

- (1) hardly
- (2) usually
- (3) frequently
- (4) occasionally

For each question from 13 to 15, choose the correct punctuation to complete the passage. Shade the correct oval (1, 2, 3 or 4) on the Optical Answer Sheet. (3 marks)

Sherlock Holmes and Dr Watson were on a camping trip. They set up tent and were soon fast asleep.

Some hours later, Holmes woke his faithful friend up and uttered, "Watson, look up at the sky and tell me what you see (13)

Watson hesitated and replied, "Well (14) I see millions of stars."

"What does that tell you?" Holmes queried.

Watson pondered for a minute and then quipped, "Astronomically (15) it tells me there are millions of galaxies. It also appears to be approximately three in the morning. In addition, I also think we will have a beautiful day tomorrow. But what does it tell you?"

Holmes sighed and explained, "Elementary, my dear Watson. It tells me that someone has stolen our tent!"

Adapted from www.guy-sports.com/jokes/good_jokes.html#

- 13 (1) [,] comma and inverted commas
(2) [.] full stop and inverted commas
(3) [?] question mark and inverted commas
(4) [!] exclamation mark and inverted commas

- 14 (1) [-] dash
(2) [:] colon
(3) [~] hyphen
(4) [...] ellipsis points

- 15 (1) [.] comma
(2) [-] full stop
(3) [;] semi-colon
(4) [?] question mark

For each question from 16 to 20, four options are given. One of them is the correct answer. Make your choice (1, 2, 3 or 4). Shade the correct oval (1, 2, 3 or 4) on the Optical Answer Sheet.

(5 marks)

- 16 Although the pain in his ear had _____, Suresh still had difficulty hearing.
- (1) declined
 - (2) dwindled
 - (3) subsided
 - (4) slackened
- 17 Chris does not look forward to going to a new school as he feels _____ and hence, not confident of making friends.
- (1) baffled
 - (2) daunted
 - (3) appalled
 - (4) disheartened
- 18 The Walkathon was organised by the community club and all its _____ donated to charity.
- (1) rewards
 - (2) benefits
 - (3) winnings
 - (4) proceeds
- 19 In her irritation, Alsiah _____ at the youths who were creating a din in the library.
- (1) gazed
 - (2) gawked
 - (3) goggled
 - (4) glowered
- 20 As Mr Ling earns very little, he lives _____ and is not able to save for a rainy day.
- (1) on his knees
 - (2) on his fast legs
 - (3) with a heavy hand
 - (4) from hand to mouth

For each question from 21 to 25, choose the word(s) closest in meaning to the underlined words. Shade the correct oval (1, 2, 3 or 4) on the Optical Answer Sheet (5 marks)

A holiday in Vietnam ended on a sour note for two Singaporean men. On their flight back here, one of the men was assaulted by a Vietnamese woman. The woman accused one of them, Mr Yeo, of kicking the back of her seat. When he did not react, she seemed to have become calm. When the plane landed, Mr Yeo told the woman they could settle the matter with the relevant authorities. This angered her who then swung her suitcase at him. Mr Yeo's friend, Mr Chua, warded off the blow for him but was clawed at instead. The men had since reported the incident to the authorities. Mr Chua said he sought treatment at the hospital the next day but has yet to seek compensation for his medical expenses.

Adapted from The Straits Times, 22 March 2012

- 21 (1) violated
(2) invaded
(3) assailed
(4) besieged
- 22 (1) cut down
(2) turn down
(3) cool down
(4) break down
- 23 (1) useful
(2) important
(3) consistent
(4) appropriate
- 24 (1) halted
(2) forbade
(3) heckled
(4) interrupted
- 25 (1) repayment
(2) rectification
(3) amendment
(4) modification

Read the passage below and answer questions 26 to 30.

It was beautiful but doomed from the start. For 800 years, the Leaning Tower of Pisa had been slowly keeling over. By 1990, the situation had reached a crisis.

"The tower was at the point of falling," recalled John Burland of Imperial College in London. Burland's job was to apply physics to the design of structures such as roads and buildings. In 1990, he joined a committee of engineers like him who were assembled for a desperate bid to save the tower. However, they very nearly pushed it over. 5

The tower in north-western Italy is an architectural marvel. Sadly however, it is also an engineering mess. As soon as construction workers began work in 1173, it started to lean. Architects tried to compensate for the tilt by making the upper storeys thicker on one side. That compensation did not solve the problem, though. After the tower was eventually completed in 1360, it kept tilting south. By the early 1800s, it was leaning at an angle of 5 degrees – risky for such a slender building. 10

Rescue attempts only made matters worse. In 1934, it was thought that the foundations were weak. Hence, concrete was injected into these foundations to strengthen them but some of the concrete seeped under the foundations, shifting the tower further. Soon, the tilt was accelerating. The marble stone on the south side of the tower was under increasing stress and starting to crack. 15

Computer experts designed simulations of the tower and confirmed that it was so poorly balanced that even a bad storm might tip it over. The simulations also confirmed why it leans. The main reason is the soil's compressibility – how easy it is to squash. Pisa stands on a layer of silt. These soft rock grains which are finer than sand tend to sag under a great weight. 20

The tower was going to collapse in a cloud of marble dust, possibly flattening a few dozen gawking tourists. "Something had to be done," said Burland. But what?

In February 1999, a full-scale soil extraction experiment began in Pisa. A team, overseen by Burland, used a set of narrow drills to extract rock grains from beneath the tower's north side. Slowly, the tower began to move back. In 2000, the tower's tilt was reduced by half a degree. "You can't see the difference but stress on the marble stone is reduced by roughly 10 percent," assured Burland. He also discovered that the tilt accelerated every autumn, around the time of heavy rainfall. Due to the increased water level, the north side of the tower got an upward nudge causing the south side to tilt further. The team then used pipes and wells to drain excess water from the north side. 25 30

So tourists can now rubberneck in safety. The Leaning Tower of Pisa will not topple on them spontaneously. It should even be safe in storms. Only one big risk remains. "If a big earthquake comes," Burland warned, "that will be it." 35

Adapted from Current Science – 'Held Up'

For each question from 26 to 30, four options are given. One of them is the correct answer. Make your choice (1, 2, 3 or 4). Shade the correct oval (1, 2, 3 or 4) on the Optical Answer Sheet.

(5 marks)

26 John Burland is _____.

- (1) an architect
- (2) an engineer
- (3) a computer expert
- (4) a construction worker

27 Why is the Leaning Tower of Pisa 'an engineering mess' (line 8)?

- (1) The building was easily squashed.
- (2) It took more than a hundred years to build.
- (3) The slender shape of the building made it risky.
- (4) It began to tilt even before it was completely built.

28 When concrete was placed into the foundation of the tower, _____.

- (1) the tower tilted further
- (2) the foundation strengthened
- (3) the marble stone began to crack
- (4) the upper storeys of the tower thickened

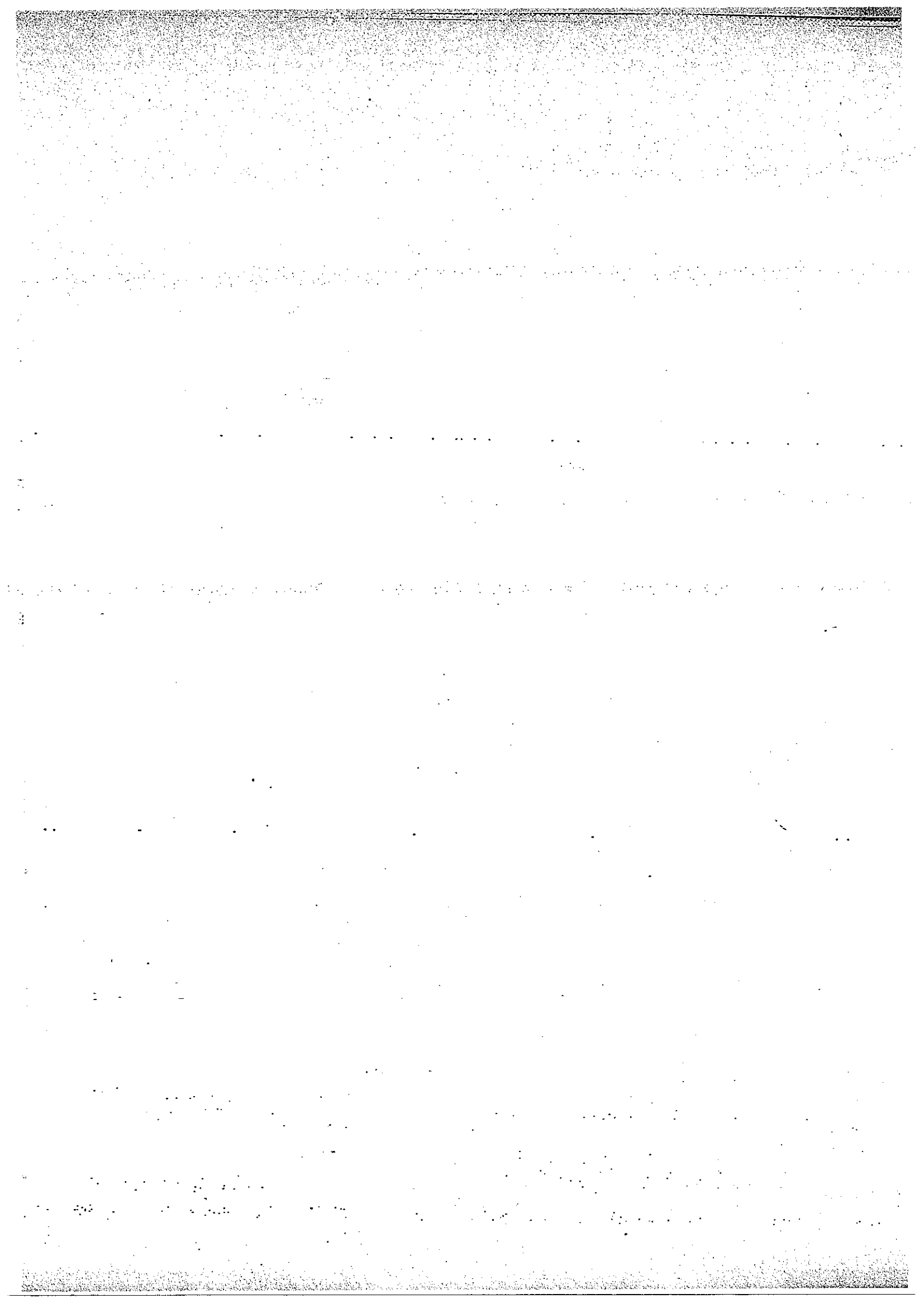
29 According to the passage, what was the major cause of the tilt?

- (1) The foundations were weak.
- (2) The marble stone was under increasing stress.
- (3) The tower stands on a layer of soft rock grains.
- (4) The increased water level in autumn nudged the tower upwards.

30 In Burland's opinion, what could topple the Leaning Tower?

It could be a _____.

- (1) bad storm
- (2) big earthquake
- (3) few dozen tourists
- (4) soil extraction experiment





RED SWASTIKA SCHOOL

RED SWASTIKA SCHOOL

2012 SEMESTRAL ASSESSMENT 1

ENGLISH LANGUAGE – PAPER 2

LANGUAGE USE AND COMPREHENSION

PRIMARY 6

Name : _____ ()

Class : Primary 6 / _____

Date : 10 May 2012

BOOKLET B

50 Questions

65 Marks

In this booklet, you should have the following:

- a. Page 11 to Page 18
- b. Questions 31 to 80

BOOKLET	OBTAINED	POSSIBLE
BOOKLET A		30
BOOKLET B		65
TOTAL		95

Parent's Signature : _____

There are 10 blanks, numbered 31 to 40, in the passage below. From the list of words given, choose the most suitable word for each blank. Write its letter (A to Q) in the blank. The letters (I) and (O) have been omitted to avoid confusion during marking. (10 marks)

EACH WORD CAN BE USED ONLY ONCE

- | | | | | |
|-----------|------------|-----------|----------------|-----------|
| (A) a | (D) before | (G) is | (K) this | (N) where |
| (B) after | (E) by | (H) over | (L) throughout | (P) while |
| (C) an | (F) from | (J) these | (M) was | (Q) with |

Imagine swimming in a large, green pool among millions of pulsing jellyfish and not getting stung. _____ jellyfish have lived in marine lakes for thousands of years, isolated _____ the rest of the oceans. With no predators, they have lost their need for stinging cells.

(31)

(32)

Marine lakes give scientists _____ opportunity to look into the past, as well as how marine ecosystems may change in the future. They are mainly scattered

(33)

_____ the Western Pacific region, the majority being found in the limestone island of the Republic of Palau and Indonesia. Jellyfish Lake, found in the Rock Islands of Palau, _____ one such lake.

(34)

(35)

Jellyfish Lake is filled _____ saltwater and marine plants and animals.

(36)

Some of the lakes are not connected to the sea _____ others have connections through tunnels or narrow channels _____ water can flow.

(37)

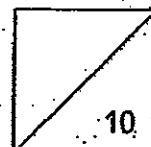
(38)

These strange marine lake ecosystems develop when depressions in limestone landscapes are flooded _____ rising sea levels. Most of today's marine lakes formed as the Earth warmed _____ the last ice age, which peaked about

(39)

(40)

18 000 years ago.



Adapted from *Asian Geographic Junior*, 'Life in a Giant Petri Dish'.

Correct each word in bold for spelling and each underlined word for grammar. Write the correct word in the relevant box. (10 marks)

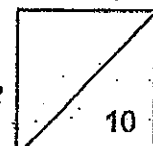
Like many students receiving financial assistance at Nanyang Technological University, (41) Engineering major Dennis Tan comes from a family with low income. His family survives from the sole income of his father.

To ease the financial burden on his father, Dennis applied for a study loan from a bank. (42) He also took on a slew of part-time jobs to earn extra income. Despite his **plite**, the pragmatic (43) final-year student kept a positive outlook towards life. He learnt to take on **chellanges**, one at a time.

Still, when Dennis received news that he was selected to receive a scholarship, both (44) (45) father and son is overjoyed. "I felt really happy because it helped me financially and relief some of our burden," recalled Dennis.

The scholarship was established through a gift from Shaw Foundation. It is worth \$5,000 (46) annually to deserved students.

For Dennis, the scholarship meant a lot. Not only did it provide him with financial (47) assurance, it also created a multiplier effect by enabling him to embark on **komunity** assistance (48) trips to other countries. He was extremely **appreshiativ** towards Shaw Foundation. He (49) concluded, "Your gift helps students which are like me worry less about life in Singapore. It also (50) allows us to focus more on the broader picture of **kontribluting** to the community."



Fill in each blank with a suitable word.

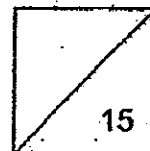
(15 marks)

Pictures of top table tennis players line the walls along its corridors. But _____ most sports schools, the Chinese Table Tennis Association School
(51) does not aim to produce world champions. It aims to seek a balance _____
(52) sports and studies among its students.

China's current system selects potential champions _____ a young
(53) age. So much emphasis _____ put on sports that the children learn little else.
(54) As a result, many who do not make it struggle to _____ a living.
(55)

The Association School is making students learn their ABCs early. On weekday mornings, students attend classes on various _____ including English
(56) Language. Students are expected to _____ nine years of compulsory
(57) education. This is so that they will get at _____ a high school certificate.
(58) Those who can, may go on to the Chinese Academy of Table Tennis in Shanghai
(59) _____ offers sports-related degree courses.

But a sports school not geared towards producing stars is a hard sell. It becomes
the second _____ for talented youngsters who prefer the better sports
(60) academies that do not put as much _____ on studies. In order to
(61) _____ the gap, students put in more time. They get just a month off
(62) _____ other youngsters enjoy a longer summer break. The hope is that the
(63) school will help reassure _____ about their children's future. The school is
(64) just the small step of a long journey towards _____ the way China grooms
(65) athletes.



Adapted from *The Straits Times*, 22 April 2012

For each of the questions 66 to 70, rewrite the given sentence(s) using the word(s) provided. Your answer must be in one sentence. The meaning of your sentence must be the same as the meaning of the given sentence(s). (10 marks)

66 Jane does not agree with the verdict. Her sister does not agree with the verdict too.

Neither _____

67 Carrie found out that she was eliminated from the competition. She was displeased.

Much to _____

68 Sarah tried very hard to stifle her scream. She could not.

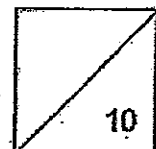
_____ no matter

69 He travelled under an assumed name. He did not want the police to locate him.

To avoid _____

70 Mr Hamid asked Alvin if he enjoyed playing chess.

_____ " Mr Hamid asked Alvin.



Read the passage below and answer questions 71 to 80.

(20 marks)

Starvation was not an uncommon fate in District 12. Who had not seen the victims? Older people who could not work, children from a family with too many to feed and those injured in the mines were often seen straggling through the streets. On any day, you would come upon them sitting motionless against a wall or lying in the meadow. The Peacekeepers would then be called in to retrieve the body. Starvation was never the cause of death officially. It was always the flu or pneumonia. However, that fooled no one. 5

On the afternoon of my encounter with Peeta Mellark, the rain was falling in relentless icy sheets. I had been in town, trying to trade some threadbare old baby clothes of Prim's in the middle of the public market but there were no takers. Although I had been to Hob on several occasions with my father, I was too frightened to venture into that rough, gritty place alone. The rain had soaked through my father's hunting jacket, leaving me chilled to the bone. For three days, we had had nothing but boiled water with some old dried mint leaves I had found in the back of a cupboard. I was shaking so hard that I dropped my bundle of baby clothes in a mud puddle. I did not pick it up for fear I would keel over and be unable to regain my feet. 10 15

I could not go home. Back at home, I would have to see my mother with her dead eyes and my little sister with her hollow cheeks and cracked lips. I could not walk into that room with the smoky fire from the damp branches I had scavenged at the edge of the woods after the coal had run out – my hands empty of any hope. 20

I stumbled along a muddy lane behind the shops that served the wealthiest townspeople. The merchants lived above their businesses, so I was essentially in their backyards.

All forms of stealing were forbidden in District 12 – punishable by death. Nevertheless, it crossed my mind that there might be something in the trash bins and those were fair game. Perhaps rotted vegetables at the grocer's, something no one but my family was desperate enough to eat. Unfortunately, the bins had just been emptied. 25

When I passed the baker's, the smell of fresh bread was so overwhelming that I felt dizzy. The ovens were in the back and a golden glow spilled out the open kitchen door. I stood mesmerised by the heat and the luscious scent for some time until the rain interfered, running its icy fingers down my back, forcing me back to life. I lifted the lid of the baker's trash bin and found it spotlessly, heartlessly bare. 30

Suddenly, a voice was screaming at me and I looked up to see the baker's wife, commanding me to move on. She asked sarcastically if I had wanted her to call the Peacekeepers. The words were ugly and I had no defence. As I carefully replaced the lid and backed away, I noticed him – a boy with blond hair – peering out. 35

from behind his mother's back. I had seen him at school. He was in my year but I did not know his name. He stuck with the town kids, so how would I? His mother went back into the bakery, grumbling, but he must have been watching me as I made my way behind the pen that held their pig and leaned against the far side of an old apple tree. The realisation that I had nothing to take home had finally sunk in. My knees buckled and I slid down the tree trunk to its roots. 40

There was a clatter in the bakery and I heard the woman screaming again and the sound of a blow. I vaguely wondered what was going on. Feet slogged toward me through the mud. I thought it was the woman and I cringed. However, it was the boy. In his arms, he carried two loaves of bread that had fallen into the fire because the crusts were scorched black. He tossed them into my direction. He did not even glance my way but I was watching him. I watched because of the bread and because of the red weal that stood out on his cheekbone. 45 50

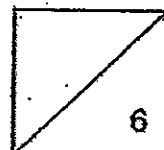
Adapted from The Hunger Games by Suzanne Collins

ALL ANSWERS MUST BE IN COMPLETE SENTENCES.

71 According to the passage, which two groups of people could possibly die of starvation?

72 How was Peeta Mellark related to the baker?

73 Quote the sentence from Paragraph 2 which tells you why the narrator was feeling very cold.



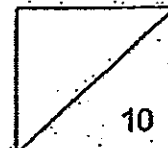
74 Why did the narrator leave the baby clothes in the mud puddle?

75 Why do you think the narrator was reluctant to go home empty-handed?

76 What did the narrator hope to find in the trash bins?

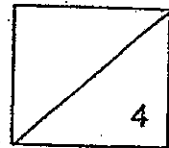
77 Why was the narrator reluctant to move away from the bakery?

78 Based on the passage, what do you think 'Peacekeepers' are?

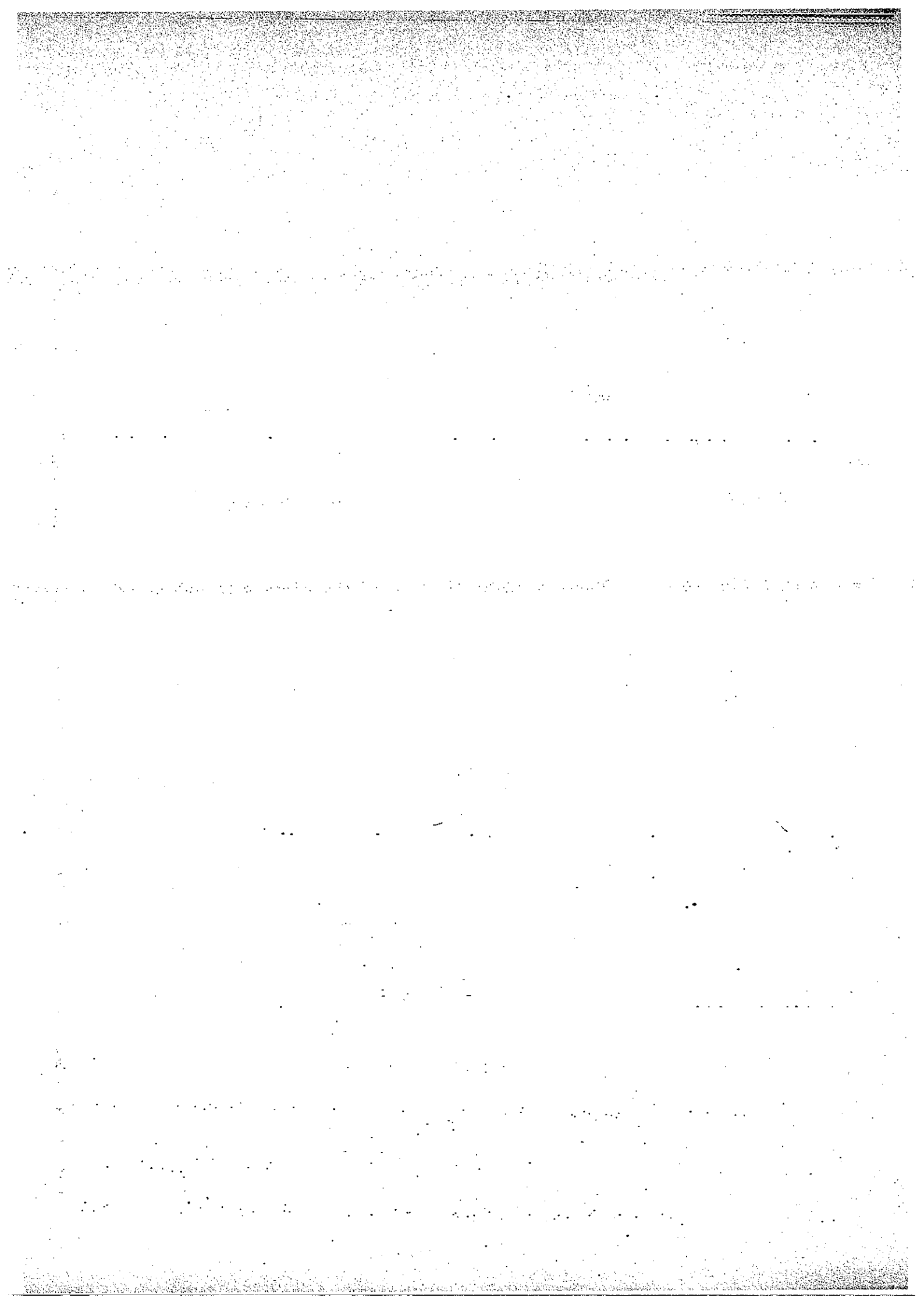


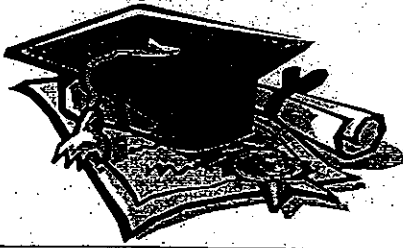
79. What could have caused the 'red weal' (line 50) on the boy's cheekbone?

80. Did the narrator get her food eventually? Explain your answer.



END OF PAPER





ANSWER SHEET

EXAM PAPER 2012

**SCHOOL : RED SWASTIKA
SUBJECT : PRIMARY 6 ENGLISH**

TERM : SA1

Q1	Q2	Q3	Q4	Q5	Q6	Q7	Q8	Q9	Q10	Q11	Q12	Q13	Q14	Q15	Q16	Q17
2	4	1	4	1	4	2	1	4	3	3	1	2	4	1	3	2

Q18	Q19	Q20	Q21	Q22	Q23	Q24	Q25	Q26	Q27	Q28	Q29	Q30	Q31	Q32	Q33	Q34
4	4	4	3	3	4	1	1	2	4	1	3	2	J	F	C	L

Q35	Q36	Q37	Q38	Q39	Q40
G	Q	P	N	E	B

41)on 42)plight 43)challenges 44)were 45)relieved

46)deserving 47)community 48)appreciative 49)who

50)contributing 51)unlike 52)between 53)at 54)is

55)earn 56)subjects 57)have 58)least 59)which

60)choice 62)close 63)while 64)parents 65)changing

66)Neither Jane nor her sister agrees with the verdict.

67)Much to her displeasure, Carrie found out that she was eliminated from the competition.

68)Sarah could not stifle her scream no matter how hard she tried.

69)To avoid being located by the police, he travelled under an assumed name.

70) "Do you enjoy playing chess?" Mr Hamid asked Alvin.

71) The two groups of people are the older people who could not work and children from a family with too many to feed.

72) Peeta Mellark was the baker's son.

73) The sentence is "The rain had soaked through my father's hunting jacket, leaving me chilled to the bone."

74) The narrator was afraid she would keel over and not be able to regain her feet.

75) She was guilty and disappointed that she had no food for her mother and sister who were starving and expecting her to bring back home.

76) The narrator hoped to find something no one desperate enough to eat, such as rotted vegetables at the grocer's.

77) She was mesmerized by the heat from the oven and the luscious scent of fresh baked bread.

78) They are police officers.

79) The slap given by the boy's mother could have caused the red wheel.

80) Yes, she did as the boy had given her the two loaves of bread.