



# RAFFLES GIRLS' PRIMARY SCHOOL

## SEMESTRAL ASSESSMENT 2 2012

Name : \_\_\_\_\_ ( ) Class: P4

**23 Oct 2012 MATHEMATICS** Att: 1 h 45 min

Your Score Out of <b>100</b> marks		
	Class	Level
Highest score		
Average score		
Parent's Signature		

### SECTION A (25 marks)

Questions 1 to 5 carry 1 mark each. Questions 6 to 15 carry 2 marks each. For each question, four options are given. One of them is the correct answer. Make your choice (1, 2, 3 or 4). Shade your answer (1, 2, 3 or 4) on the OAS provided.

1. What does the digit 4 in 10 453 stand for?

- (1) 4 000
- (2) 400
- (3) 40
- (4) 4

( )

2. Round off 29 598 to the nearest hundreds.

- (1) 29 000
- (2) 29 500
- (3) 29 590
- (4) 29 600

( )

3. Raja has a square carpet which has an area of  $36 \text{ m}^2$ .  
What is the length of the carpet?

- (1) 6 m
- (2) 9 m
- (3) 3 m
- (4) 12 m

( )

4. Sumei started doing her homework at 15 25. She completed her homework 1 h 55 min later. What time did she complete her homework?

- (1) 13 30
- (2) 16 20
- (3) 17 00
- (4) 17 20

( )

5. The table below shows the mass of 4 fruits.

Fruits	Mass (g)
A	19
B	79
C	87
D	53

What is the total mass of the lightest fruit and the heaviest fruit?

- (1) 106 g
- (2) 132 g
- (3) 140 g
- (4) 166 g

( )

6. Mrs Gopal had \$20.90 at first. She bought 4 packets of potato chips at \$3.95 each. How much money did she have left?

- (1) \$4.60
- (2) \$5.10
- (3) \$16.00
- (4) \$16.20

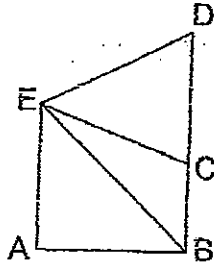
( )

7. How many quarters are there in 3 wholes?

- (1)  $\frac{3}{4}$
- (2)  $1\frac{1}{3}$
- (3) 4
- (4) 12

( )

8. One of the lines in the figure is parallel to AE.  
Which line is parallel to line AE?



- (1) Line AB  
(2) Line BD  
(3) Line BE  
(4) Line DE

( )

9. Which of the following is **NOT** an equivalent fraction of  $\frac{6}{9}$ ?

- (1)  $\frac{2}{3}$   
(2)  $\frac{4}{6}$   
(3)  $\frac{6}{8}$   
(4)  $\frac{8}{12}$

( )

10. What is the number when 251.63 is rounded off to 1 decimal place.

- (1) 251.0  
(2) 251.6  
(3) 251.7  
(4) 252.0

( )

11. Which number below is 100 more than 8 497?

- (1) 8 397  
(2) 8 498  
(3) 8 507  
(4) 8 597

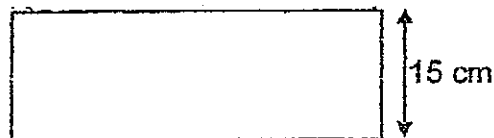
( )

12. In which of the following numbers does the digit 3 stand for 3 hundredths?

- (1) 311.25
- (2) 213.56
- (3) 210.35
- (4) 578.43

( )

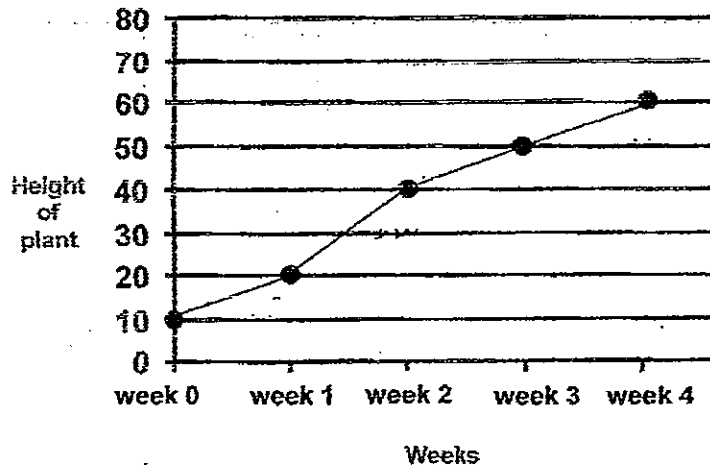
13. The figure below shows a rectangle.  
The length of the rectangle is thrice its breadth.  
Find its perimeter.



- (1) 45 cm
- (2) 60 cm
- (3) 105 cm
- (4) 120 cm

( )

14. The graph below shows the height of a plant over a month.



During which period of time was the growth of the plant the fastest?

- (1) week 0 to week 1
- (2) week 1 to week 2
- (3) week 2 to week 3
- (4) week 3 to week 4

( )

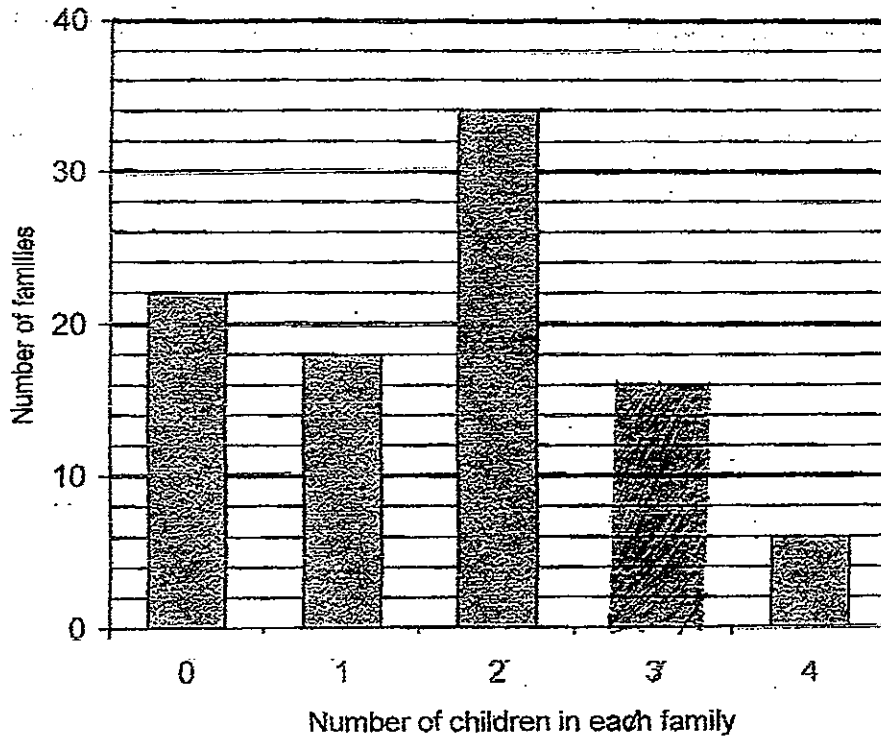
15. 9 bottled drinks weigh 2 kg 970 g.  
What is the mass of a dozen bottled drinks?

- (1) 1 980 g
- (2) 3 300 g
- (3) 3 960 g
- (4) 4 104 g




( )

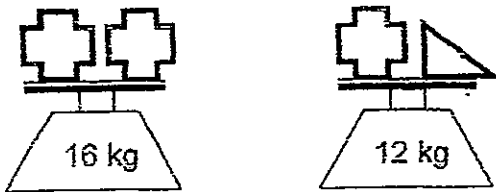


18. The following graph shows the number of children in each family in a particular block of flats.



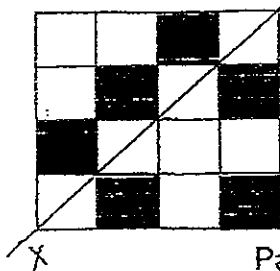
In total, 56 families have more than one child.  
Complete the bar graph above to show the number of families which have 3 children.

19. 3 identical crosses  and a triangle  are placed on weighing scales as shown below.  
What is the mass of the triangle  ?



Ans: \_\_\_\_\_ kg

20. Draw a line of symmetry in the figure shown below:-



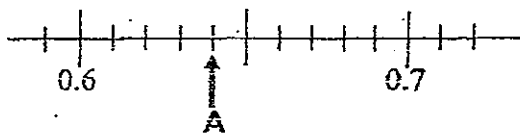
21. Identify and shade the unit shape in the tessellated figure shown below.

22. What is the missing number in the box?

$$\frac{1}{3} = \frac{\square}{12}$$

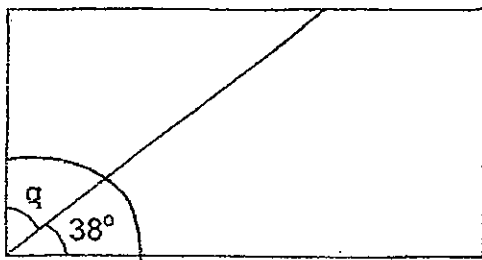
Ans: \_\_\_\_\_

23. Write the decimal represented by A.



Ans: \_\_\_\_\_

24. The figure below shows a rectangle. Find the value of  $\angle q$ .



Ans: \_\_\_\_\_<sup>o</sup>

25.  $\frac{7}{12} + \frac{1}{4} =$

Ans: \_\_\_\_\_



26. Write the missing number in the number pattern below.

12 879, 12 989, \_\_\_\_\_, 13 209, 13 319

Ans: \_\_\_\_\_

27. Two factors of 21 are 1 and 21. What are the other two factors of 21?

Ans: \_\_\_\_\_ and \_\_\_\_\_

28. The table below shows the number of mother tongue language books in 4 classes.

Classes	Types of Books		
	Chinese	Malay	Tamil
4A	28	8	3
4B	31	9	5
4C	34	?	4
4D	25	10	5
Total	118	34	17

(a) In 4B, what fraction of the books are Tamil books?  
Express your answer in the simplest form.

Ans : \_\_\_\_\_

(b) How many Malay books are there in 4C?

Ans : \_\_\_\_\_

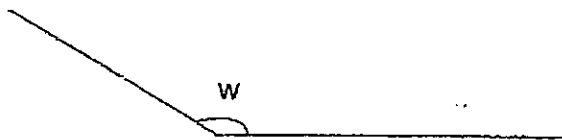
29. Mr Lim had 2 barrels each containing 13.75ℓ of oil. He transferred all the oil from the barrels into 5 identical tanks. What is the amount of oil in each tank?

Ans: \_\_\_\_\_ ℓ

30. Meng Meng takes 24 min to walk home from her grandparents' house. Cycling reduces her travelling time by half. She leaves her grandparents' house at 13 55. What time will she reach home if she cycles?  
Express your answer in 24-hour clock.

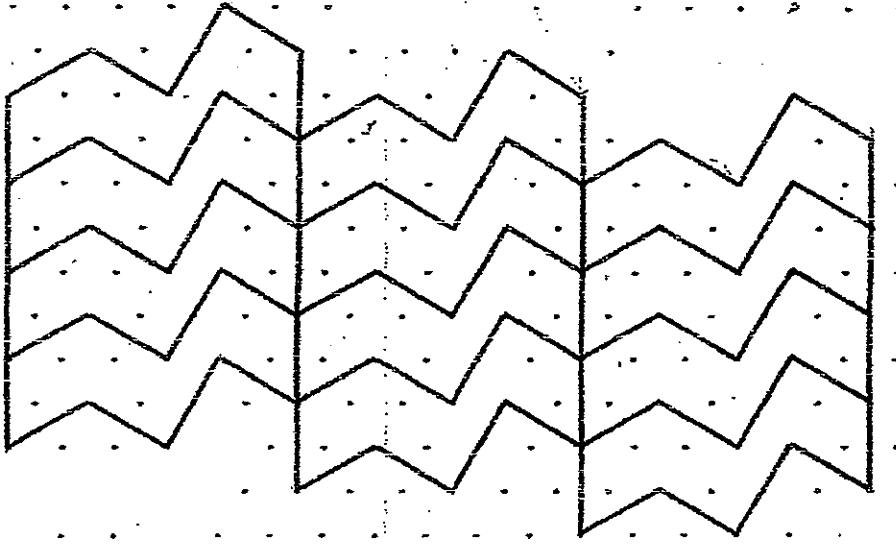
Ans: \_\_\_\_\_

31. Measure and write down the size of  $\angle w$ .



Ans: \_\_\_\_\_ °

32. The pattern below shows part of a tessellation. Extend the tessellation by drawing two more unit shapes in the space provided.



33. Find the value of  $5.72 \times 8$ .

Ans: \_\_\_\_\_

34.  $6574 - 3217 =$  \_\_\_\_\_

Ans: \_\_\_\_\_

35. The table below shows the number of plates of fried rice and chicken rice sold in a coffee shop last week.

Day	Number of plates		Total amount collected
	fried rice	chicken rice	
Monday	120	250	\$1 110
Tuesday	210	240	\$1 350
Wednesday	165	200	\$1 095
Thursday	150	270	\$1 260
Friday		?	\$1 395

A plate of fried rice and a plate of chicken rice costs \$3 each. On Friday, the number of plates of fried rice sold was twice the number of plates of chicken rice sold. How many plates of chicken rice were sold on Friday?

**SECTION C (35 marks)**

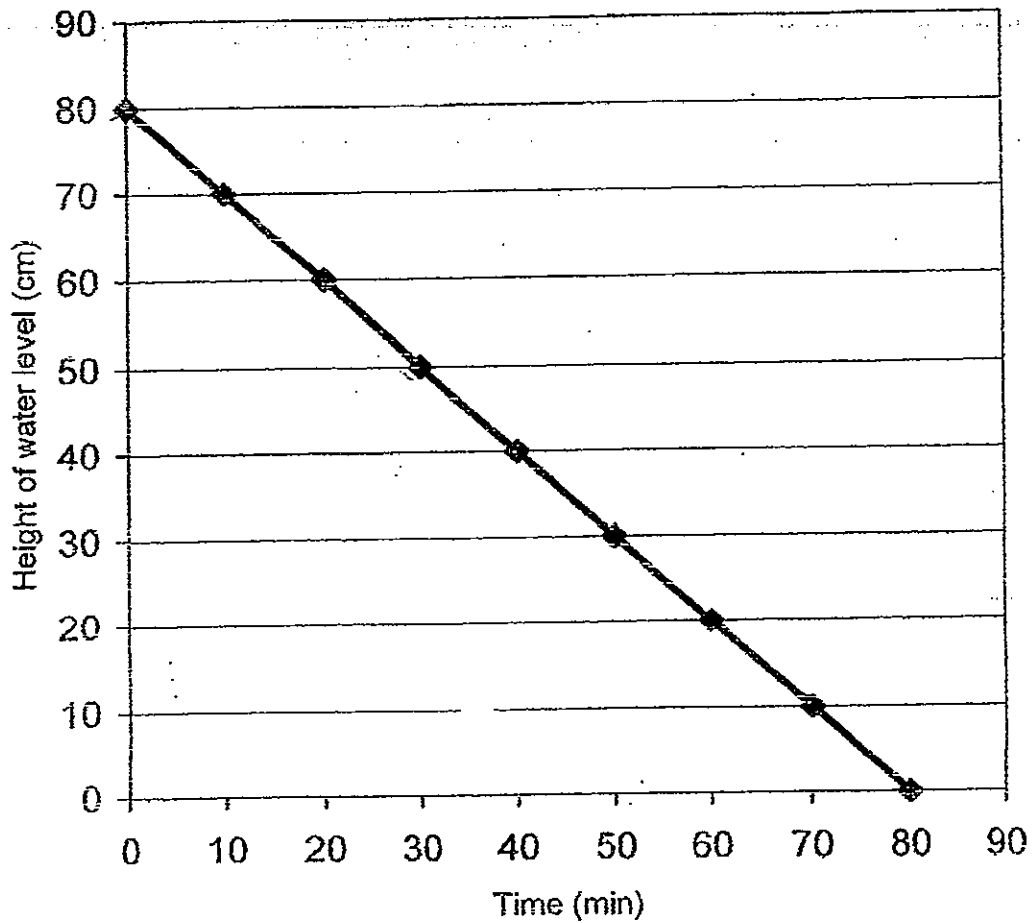
For questions 36 to 44, show your working clearly in the space provided below each question and write your answer with suitable units in the spaces provided. All diagrams are not drawn to scale. Answers in fractions must be expressed in the simplest form. Marks will be awarded for relevant working. The number of marks available is shown in brackets [ ] at the end of each question or part-question.

---

36. Company A and Company B have 2 068 workers altogether. Company A has 542 more workers than Company B. How many workers does Company B have?

Ans: \_\_\_\_\_ [3]

37. A 100-cm tall rectangular container was partly filled with water. A tap was then turned on to drain out the water from the container completely. The line graph below shows the height of the water level in the container over some time.



- (a) What fraction of the container was filled with water at first?  
Express your answer as a fraction in its simplest form.

Ans: (a) \_\_\_\_\_ [1]

- (b) How long did it take for the water level to fall to the 50-cm mark?

Ans: (b) \_\_\_\_\_ [1]

- (c) How long did it take for all the water to be drained out from the container?

Ans: (c) \_\_\_\_\_ [1]

38. Kim bought 3 pairs of ~~shorts~~<sup>sports</sup> shoes at \$79.90 each. She gave the cashier \$300.  
How much change did she receive?

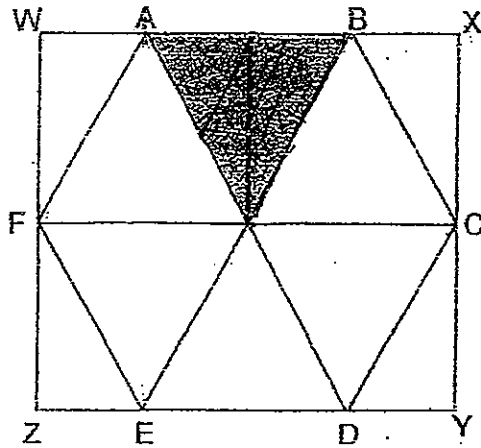
Ans: \_\_\_\_\_ [3]

39. WXYZ is a square.

ABCDEF is made up of 6 identical triangles. The area of one triangle is  $18 \text{ cm}^2$

(a) What fraction of the figure is shaded?

(b) Find the length of XY.



Ans: (a) \_\_\_\_\_ [1]

(b) \_\_\_\_\_ [3]



40. In June, Muthu's salary was \$2080. He spent  $\frac{1}{10}$  of it on transport and  $\frac{7}{10}$  of it on food and saved the rest.

In July, his salary was reduced. He saved  $\frac{1}{5}$  of it and reduced his spending on food by \$220. He spent the same amount of money on transport.

How much did he save in July?

Ans: \_\_\_\_\_ [4]

41. The length of a pen is 20 cm.

The length of the pen is  $\frac{4}{5}$  the length of a ruler.

Jenny has an equal number of pens and rulers.




Find the number of pens Jenny has if the length of all the rulers is 80 cm more than the length of the pens.

Ans: \_\_\_\_\_ [4]

42. The total mass of Amanda and Beatrice is 61.5kg. The total mass of Amanda and Cindy is 67kg. If the total mass of Beatrice and Cindy is 63.5kg, find the mass of Amanda.

Ans: \_\_\_\_\_ [4]

43. Study the pattern below. All the stars are identical.

		
1 <sup>st</sup> pattern	2 <sup>nd</sup> pattern	3 <sup>rd</sup> pattern

- a) How many stars are needed for the 10<sup>th</sup> pattern?  
b) At which pattern will there be 41 stars?

Ans: (a) \_\_\_\_\_ [2]

(b) \_\_\_\_\_ [3]

44. Mrs Lee bought 17 cartons of green tea and grape juice altogether.  
There were 24 bottles of drinks in each carton.

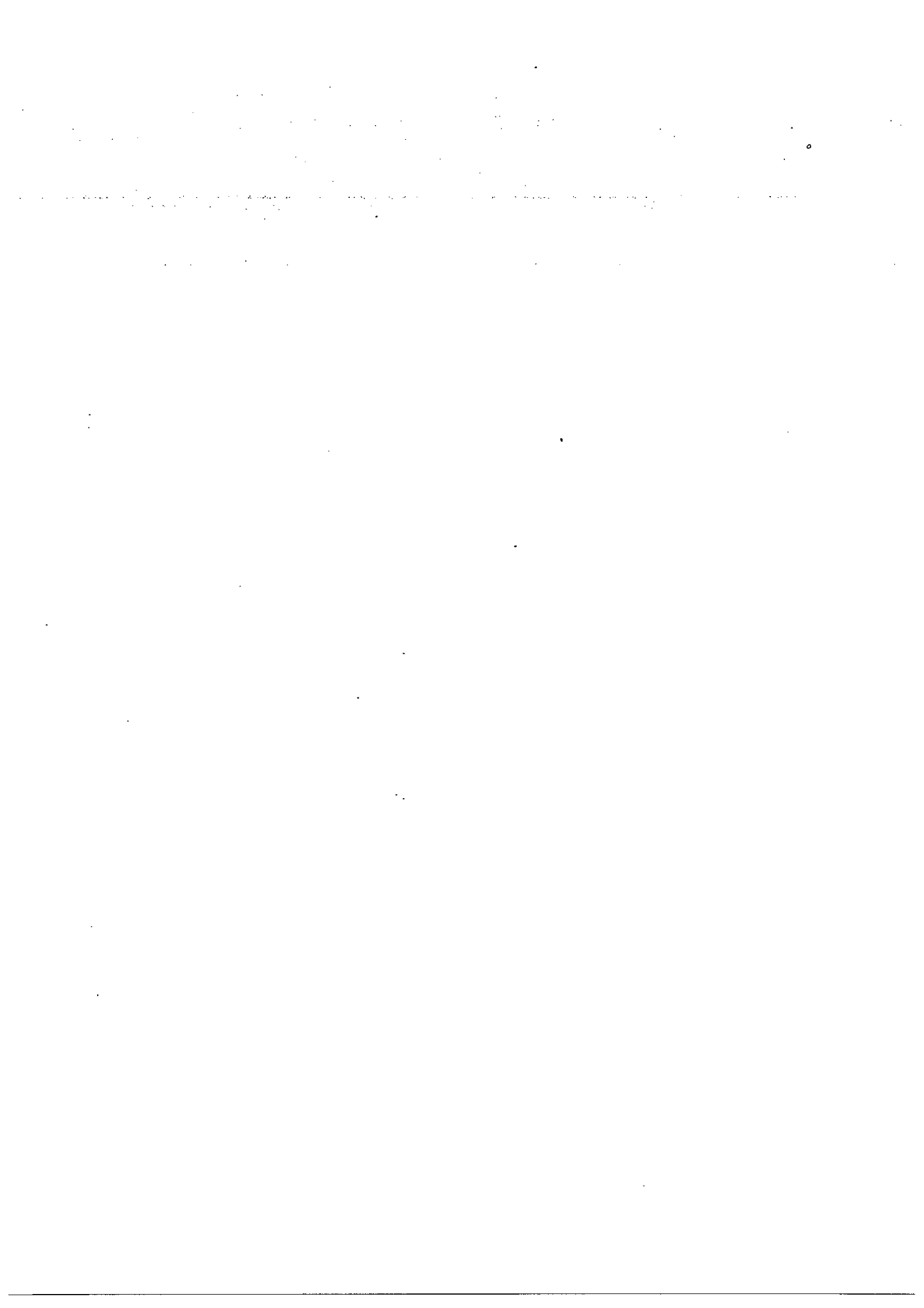
After she sold  $\frac{7}{9}$  of the number of bottles of grape juice and 68 bottles of green tea, the number of bottles of green tea became 4 times the number of bottles of grape juice.

How many more bottles of green tea than grape juice were there at first?

Ans: \_\_\_\_\_ [5]

-End of Paper-  
Please check your work carefully ☺

Setters: Ong Wee Peng & Yeo Melissa



# ANSWER SHEET

**EXAM PAPER 2012**

**SCHOOL : RAFFLES GIRLS'  
SUBJECT : PRIMARY 4 MATHEMATICS**

**TERM : SA2**

Q1	Q2	Q3	Q4	Q5	Q6	Q7	Q8	Q9	Q10	Q11	Q12	Q13	Q14	Q15
2	3	1	4	1	2	3	2	3	2	4	4	4	2	3

16) 2019, 2091, 2109

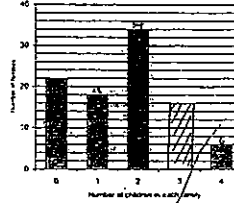
17) 144m<sup>2</sup>

18)

19) 4kg

20) 2 squares

21)



22) 4

23) 0.64

24) 52°

25) 5/6

26) 13099

27) 3 and 7

28) a) 1/9

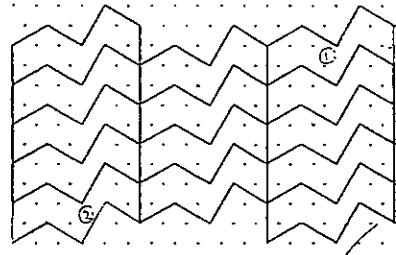
b) 7 Malay book

29) 5.5L

30) 1407

31) 149°

32)



33) 45.76

34) 3357

35) 155 plates of chicken rice

36) CA		542	} 2068
CB			

$$2068 - 542 = 1526$$

$$1526 \div 2 = 763$$

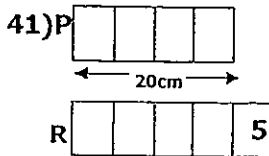
Company B has 763 workers.

- 37)a)  $4/5$   
 b) 30 minutes  
 c) 80 minutes

38)  $\$79.90 \times 3 = \$239.70$   
 $300 - \$239.70 = \$60.30$   
 She receive  $\$60.30$  change.

- 39)a)  $1/8$   
 b)  $18 \times 2 = 36$   
 $12 \times 12 = 144$   
 Or  $18 \times 8 = 144$   
 Ans : 12cm

40)  $1/10 \times 2080 = 208$   
 $7/10 \times 2080 = 1456$   
 $1456 - 220 = 1236$   
 $1236 + 208 = 1444$   
 $1444 \div 4 = 361$   
 He save  $\$361$  in July.



$20 \div 4 = 5$   
 $80 \div 5 = 16$   
 Jenny has 16 pens.

42)  $A+B = 61.5\text{kg}$   
 $A+C = 67\text{kg}$   
 $B+C = 63.5\text{kg}$   
 $A+A+B+C = 61.5 + 67 = 128.5$   
 $A+A+C+B - C+B = A+A$   
 $= 128.5 - 63.5 = 65$   
 $A = 65 \div 2 = 32.5$   
 The mass of Amanda is 32,5kg

- 43)a) 37 stars are needed for the 10<sup>th</sup> pattern.  
 b) 11<sup>th</sup> pattern will be 41 stars.

44)  $340 \div 17 = 20$   
 $68 - 20 = 48$   
 There were 2 more bottles of green tea grape juice at first.