

SINGAPORE CHINESE GIRLS' SCHOOL  
FIRST SEMESTRAL ASSESSMENT 2013  
PRIMARY 3  
SCIENCE

Name: \_\_\_\_\_ (     )

Date: \_\_\_\_\_

Class: Primary 3

Components	Marks Obtained	Maximum Mark
Part I		30
Part II		20
Total		50

Parent's Signature: \_\_\_\_\_

**Part II ( 20 marks)**

Answer the following questions.

16. The table below shows some characteristics of Animals X and Y.

	Has fins	Has a tail	Gives birth to young alive	Suckles its young with milk
Animal X	√	√	√	√
Animal Y	√	√		

a) Write down the similarities between Animal X and Animal Y.

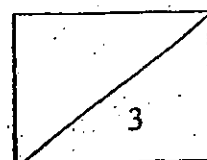
[1]

b) Write down the Animal Group that Animal X and Animal Y belong to.

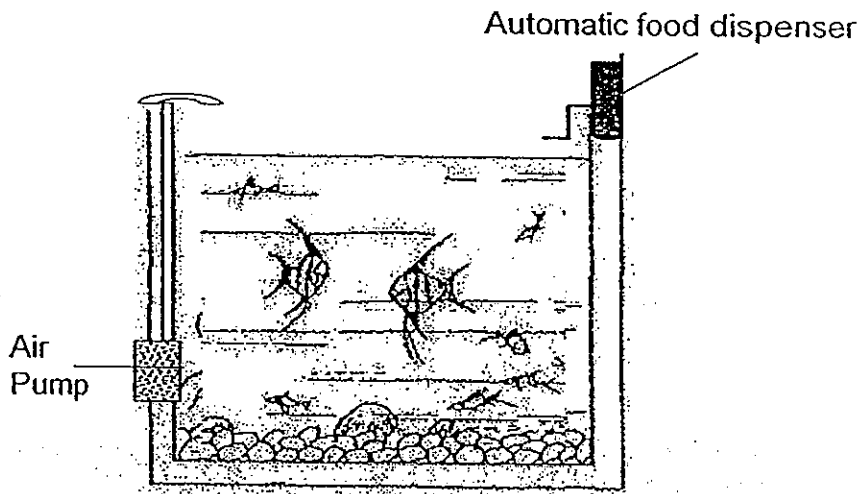
[2]

Animal X: \_\_\_\_\_

Animal Y: \_\_\_\_\_



17. Susan went on a holiday for a week in June. She bought an automatic food dispenser and placed it in her fish tank. She also had an air pump in her fish tank. There was a short circuit in her home on the first day and electricity was cut off. It caused the air pump in the tank to stop working.



- a) Before Susan left for her holiday, she ensured that her fish had the 3 things they needed to survive. What are the 3 things? [1]

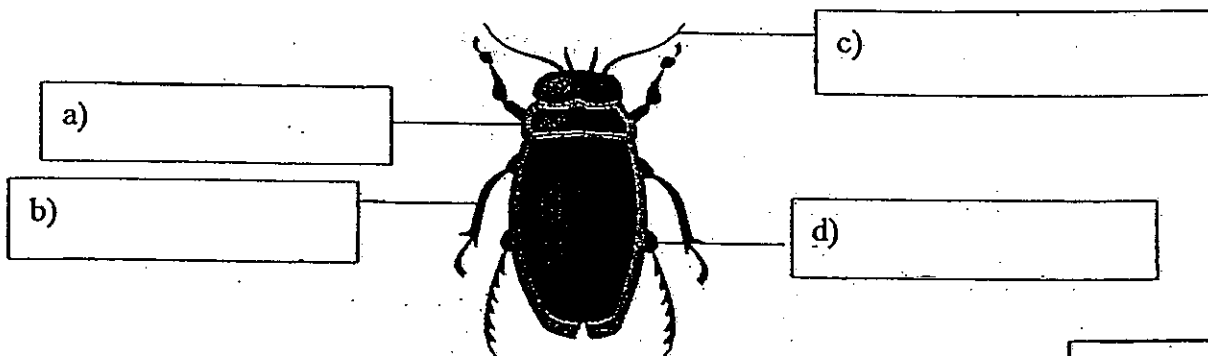
i) \_\_\_\_\_ ii) \_\_\_\_\_ iii) \_\_\_\_\_

- b) However, when Susan returned home from her holiday, she discovered that some of her fish had died even though there was still fish food in the tank. Why did some of her fish die? [1]

\_\_\_\_\_

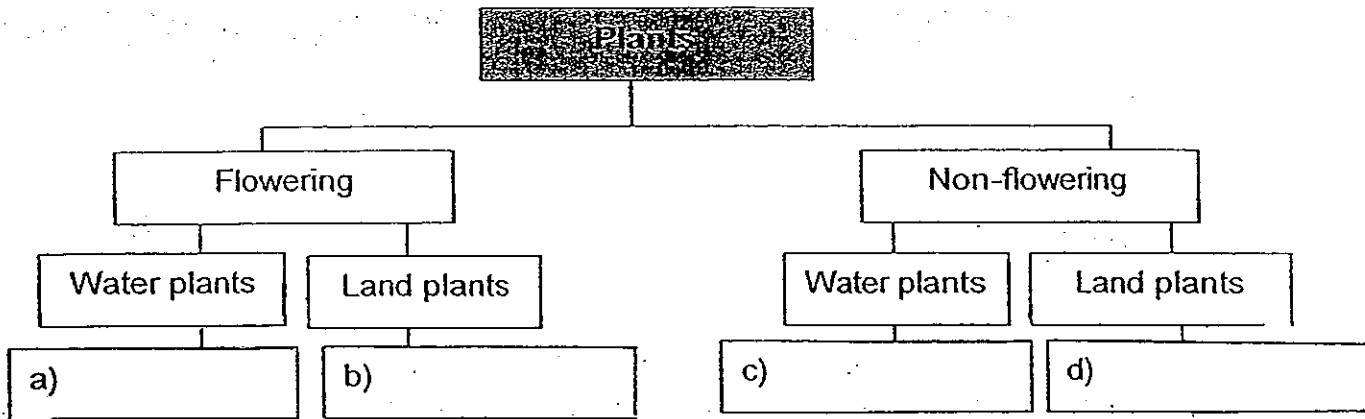
\_\_\_\_\_

18. Label the different parts of the beetle. [2]



19. Linda has been given 4 plants as listed in the box below. Help her place the correct plant under the correct heading. [2]

Mosquito fern	Jasmine	Bird's nest fern	Water lily
---------------	---------	------------------	------------



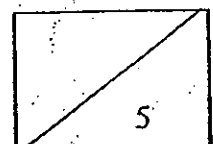
20. Jenny conducted an experiment as shown by the table below. Three slices of white bread; X, Y and Z of equal size were cut from the same loaf. The table below shows the places the three slices of white bread were kept. She wanted to find out which slice(s) of bread would have bread mould on it first.

White bread	Number of teaspoons of water added before being put in zip-lock bags	Where the slices of white bread were placed
X	4	Under the sun
Y	4	Storeroom
Z	4	Refrigerator

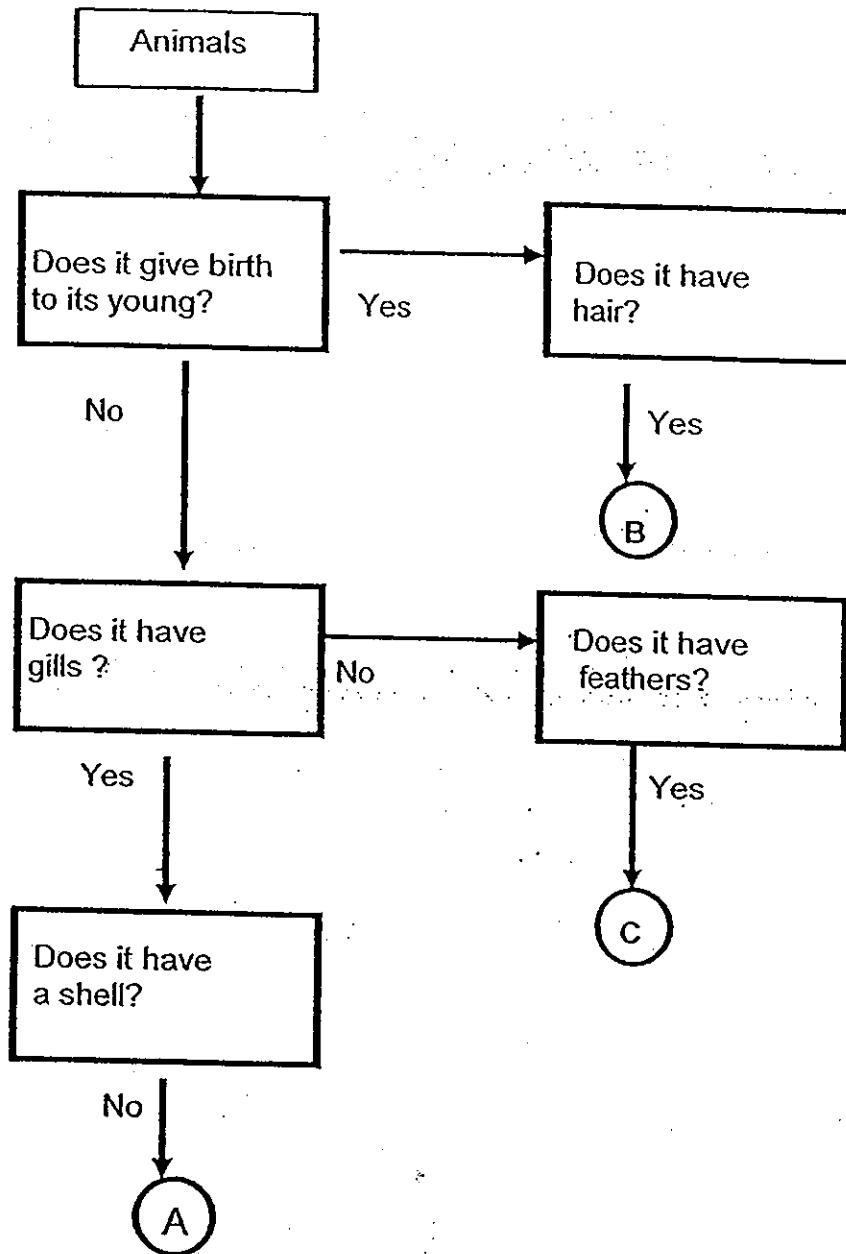
- a) On which slice(s) of bread would bread mould most likely to appear first? [1]

- b) Write down the conditions that enable bread mould to grow the fastest in (a). [1]

- c) If Jenny had used brown instead of white bread for the experiment, why do you think she would have difficulty getting her results? [1]



21. Look carefully at the flow chart.



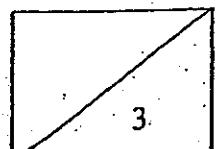
Use the helping words in the boxes and match them with animals A, B and C. [3]

ostrich	clownfish	whale	snail
---------	-----------	-------	-------

a) Animal A : \_\_\_\_\_

b) Animal B: \_\_\_\_\_

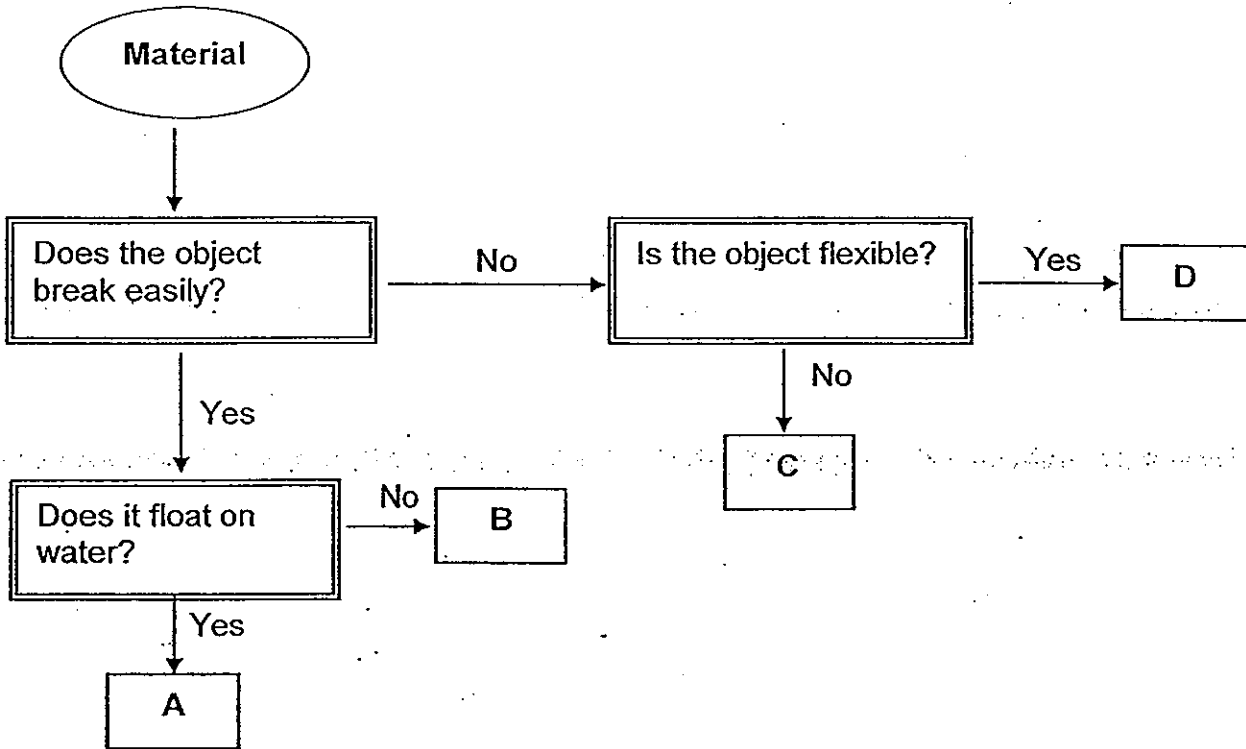
c) Animal C: \_\_\_\_\_



22. Read the statements carefully and circle the correct answer. [2]

a)	Bacteria are micro-organisms.	True / False
b)	Fungi reproduce by seeds.	True / False
c)	Puffball is an example of fungi.	True / False
d)	All bacteria harm our body.	True / False

23. Study the flow chart below.



a) Write down all the characteristics of Object B. [1]

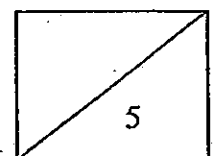
---

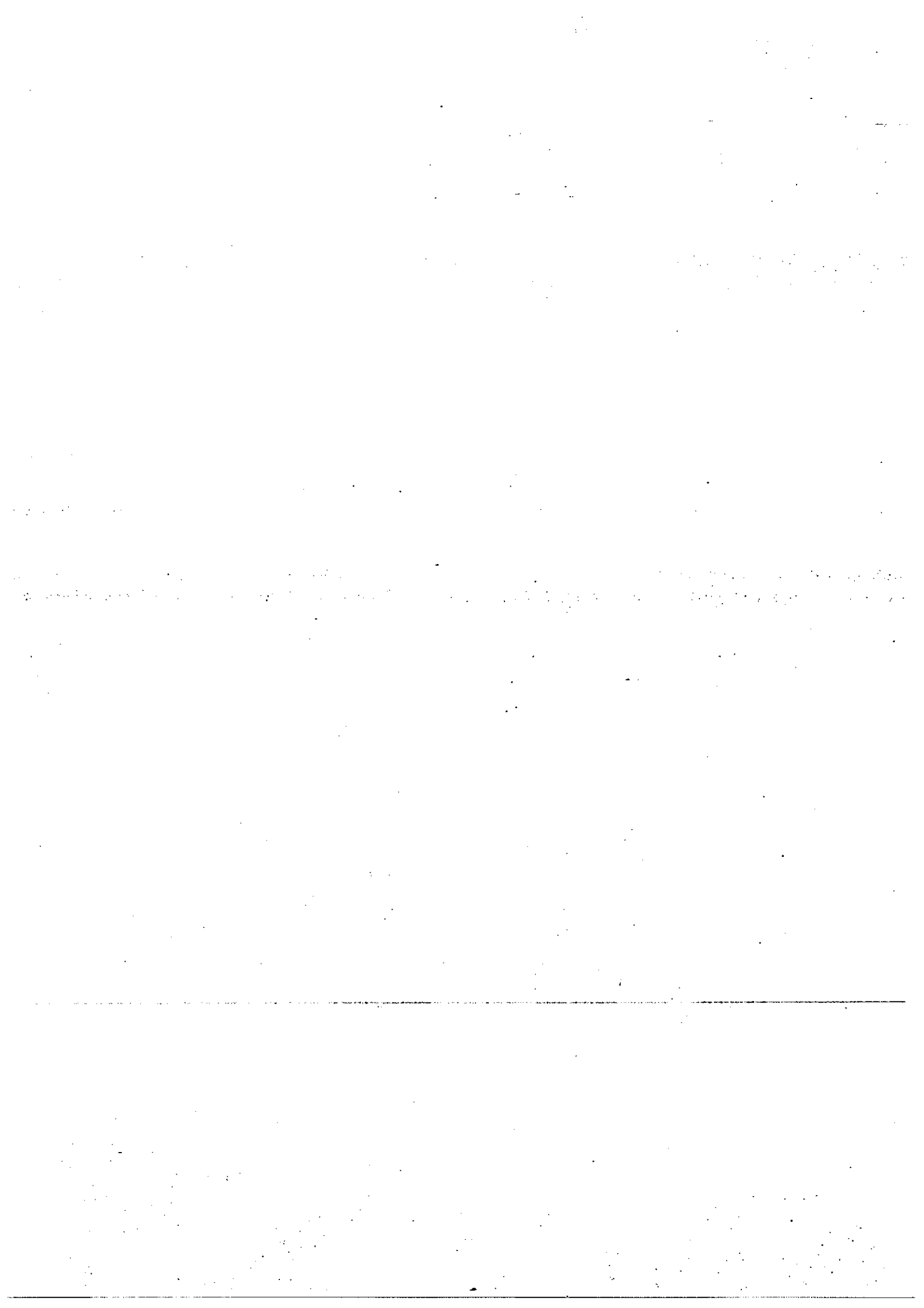


---

b) Using the flow chart, put a tick (✓) which shows the characteristic and a cross (X) if it does not show the characteristic of Objects C and D in the table below. [2]

Objects	Flexible?	Breakable?
C		
D		





# ANSWER SHEET

**EXAM PAPER 2013**

**SCHOOL : SINGAPORE CHINESE GIRLS' SCHOOL**

**SUBJECT : PRIMARY 3 SCIENCE**

**TERM : SA1**

Q1	Q2	Q3	Q4	Q5	Q6	Q7	Q8	Q9	Q10	Q11	Q12	Q13	Q14	Q15
3	2	2	1	4	2	4	4	1	3	4	4	4	3	1

## Part II

Q16

- a) Both have a fin and tail
- b) X: Mammals  
Y: Fish

Q17

- a) i) air  
ii) food  
iii) water
- b) Because the air pump in the tank was not working so the fish did not have enough air to breathe

Q18

- a) thorax
- b) legs
- c) feelers
- d) abdomen

Q19

- a) Water Lily

- b) Jasmine
- c) Mosquito fern
- d) Bird's nest fern

Q20

- a) Y
- b) Dark and warm
- c) If the bread was brown, she would have difficulty finding out where the mould is on the bread as the mould is dark-coloured and may blend in with the colours of the brown bread

Q21

- a) clownfish
- b) whale
- c) ostrich

Q22

- a) True
- b) False
- c) True
- d) False

Q23

- a) It breaks easily and it does not float on water
- b)

Objects	Flexible?	Breakable?
C	X	X
D	√	X