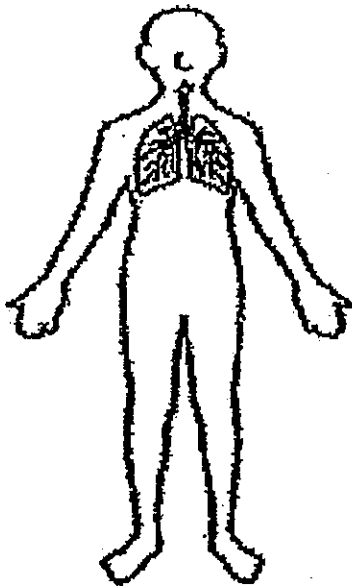


**Part I (10 MARKS)**

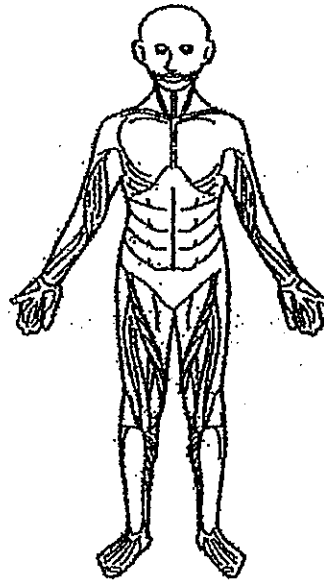
For each question from 1 to 10, four options are given. One of them is the correct answer. Make your choice (1, 2, 3 or 4) and write the correct answer in the brackets provided. Each correct answer will score one mark.

1. Which one of the following systems enables the human body to transport oxygen, digested food and water to all parts of the body?

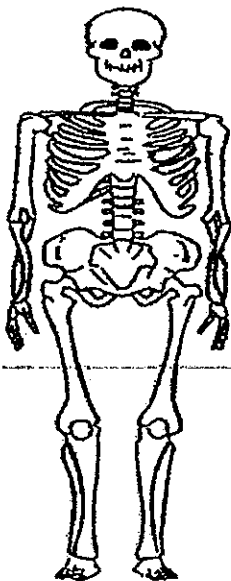
(1)



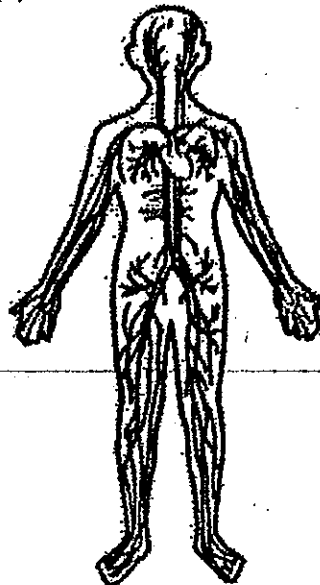
(2)



(3)



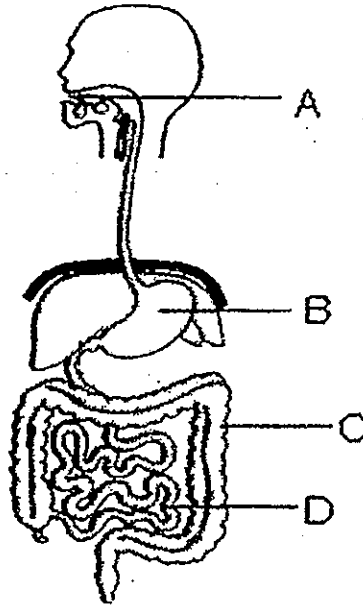
(4)



( )



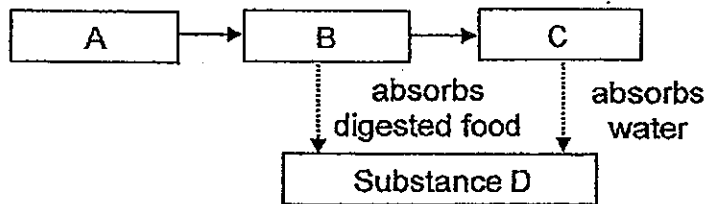
5. The diagram below shows a human digestive system.



At which part of the human digestive system is water mostly absorbed from the undigested food?

- (1) A (2) B  
(3) C (4) D ( )

6. Study the diagram below which shows a part of a digestive system.

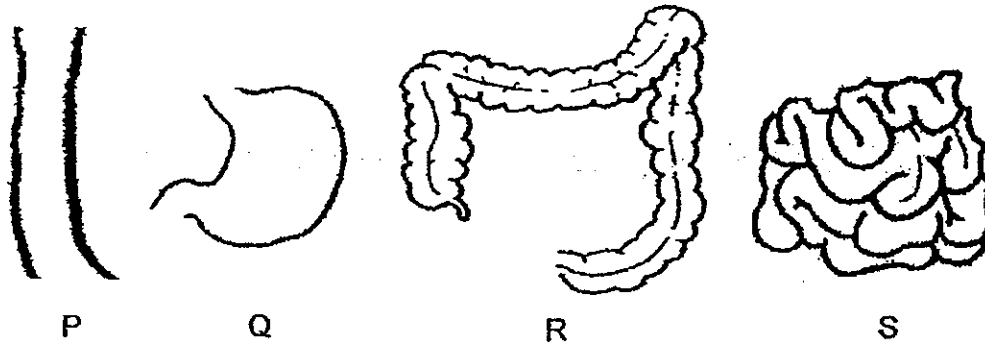


Which of the following represents A, B, C and D?

	A	B	C	D
(1)	gullet	stomach	small intestine	blood
(2)	gullet	small intestine	blood	small intestine
(3)	stomach	small intestine	large intestine	blood
(4)	stomach	small intestine	blood	large intestine

( )

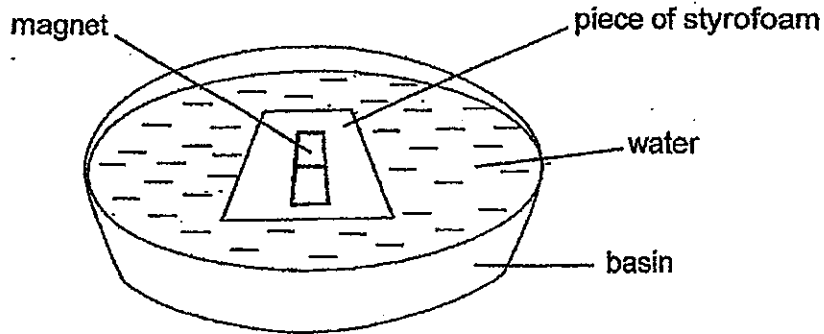
7. Study the pictures as shown below.



Which organ (P, Q, R or S) is not doing its function well, when someone is having constipation?

- (1) P
  - (2) Q
  - (3) R
  - (4) S
- ( )

8. A magnet is placed in a basin of water. It is allowed to come to rest freely.



In which direction will the magnet come to a rest?

- (1) North - South
  - (2) North - East
  - (3) East - West
  - (4) South - West
- ( )

9. Issac magnetised four iron nails (P, Q, R and S) using the 'stroking' method. Then he placed the iron nails in a box filled with paper clips to test the strength of the magnetised iron nails. The results are as shown below.

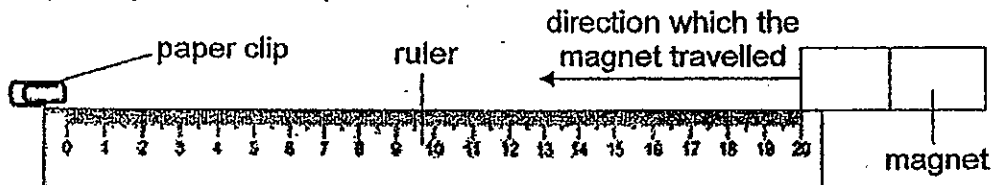
Iron Nail	Number of strokes applied	Number of paper clips attracted
P	4	1
Q	8	2
R	16	4
S	28	8

What can Issac infer from the experiment?

- (1) The strength of the four iron nails are the same.
- (2) The more strokes applied to the iron nail, the weaker the iron nail.
- (3) The more strokes applied to the iron nail, the stronger the iron nail.
- (4) The direction of strokes applied affects the strength of the iron nail.

( )

10. Joyce conducted an experiment as shown below to test the strength of four magnets (W, X, Y and Z).



She recorded the results in a table as shown below.

Magnet	W	X	Y	Z
Furthest distance between the magnet and the paper clip when it attracts the paper clip	5 cm	14 cm	8 cm	10 cm

Which one of the magnets is the strongest?

- (1) W
- (2) X
- (3) Y
- (4) Z

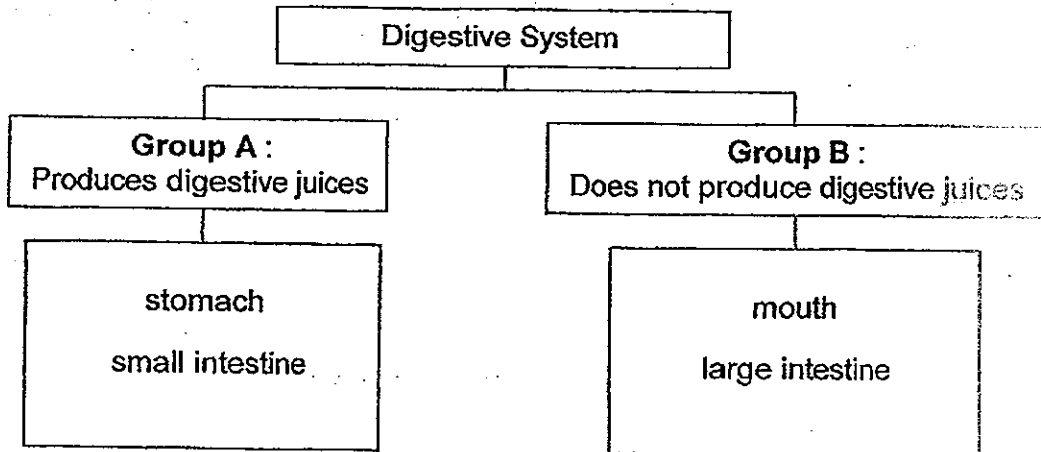
( )

**End of Part I**

**Part II (5 MARKS)**

For questions 11 and 12, write your answers in the blanks provided.

11. Joey classified the body parts of the human digestive system as shown below



(a) Name the body part that has been classified wrongly. Explain why. (1m)

---

---

(b) Joey wanted to include 'gullet' into the chart above. Which group should 'gullet' be classified? Explain why. (1m)

---

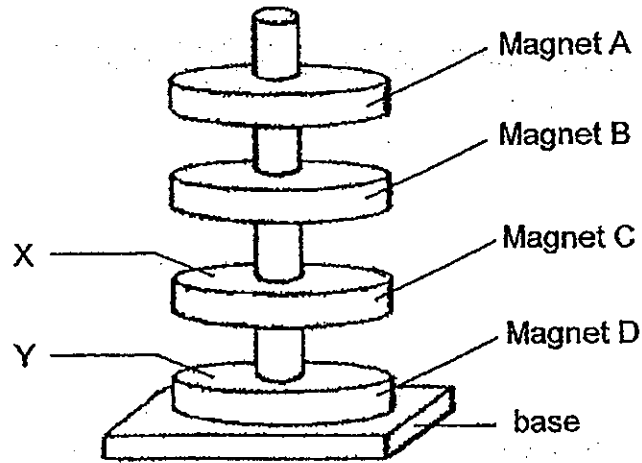
---

(c) Joey wanted to include the body part 'windpipe' under Group A. Do you agree with him? Explain why. (1m)

---

---

12. Kelly arranged four ring magnets (A, B, C and D) in a set-up as shown below.



(a) If X is the North Pole of Magnet C, what is the unknown pole Y of Magnet D? (1m)

Y : \_\_\_\_\_

(b) The Magnet A is turned over in the above set-up. What would you observe? (1m)

---

---

**End of Part II**

# ANSWER SHEET

**EXAM PAPER 2013**

**SCHOOL : ROSYTH PRIMARY SCHOOL**

**SUBJECT : PRIMARY 3 SCIENCE**

**TERM : CA2 (Topical Test)**

---

Q1	Q2	Q3	Q4	Q5	Q6	Q7	Q8	Q9	Q10
4	3	2	3	3	3	3	1	3	2

Part II

Q11

- a) The mouth. It produces digestive juices and therefore should not be in Group A.
- b) Group B. It does not produce digestive juices.
- c) No. Windpipe is part of the respiratory system and not the digestive system

Q12

- a) Y: South
- b) Magnet B will be attracted to Magnet A and the rest will stay the same



