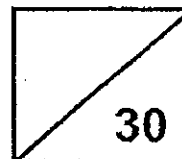




Rosyth School
Topical Test for 2013
SCIENCE
Primary 3

Name: _____

Total
Marks:



Class: Pr 3 _____

Register No. _____

Duration: 50min

Date: 4th March 2013

Parent's Signature: _____

Instructions to Pupils:

1. Do not open the booklet until you are told to do so.
2. Follow all instructions carefully.
3. This paper consists of 2 sections, Part I and Part II.
4. For questions 1 to 7, write the correct answer in the brackets provided.
5. For questions 8 to 12, give your answers in the spaces provided in Part II.

	Maximum	Marks Obtained
Part I	14 marks	
Part II	16 marks	
Total	30 marks	

* This booklet consists of 8 pages. (pg. 1 to 8)

This paper is not to be reproduced in part or whole without the permission of the Principal.

Part 1 (14 marks)

For each question from 1 to 7, four options are given. One of them is the correct answer. Make your choice (1, 2, 3 or 4). Write the correct answer in the brackets provided.

1. Which of the following is/are true of a non-living thing?

- A: It can reproduce
- B: It can move by itself
- C: It does not need air, water and food

- (1) A only
 - (2) C only
 - (3) A and C only
 - (4) B and C only
- ()

2. Ali was able to classify flowers into two groups. The first group of flowers has smell and the second group has no smell. Which one of the sense organs did he use?

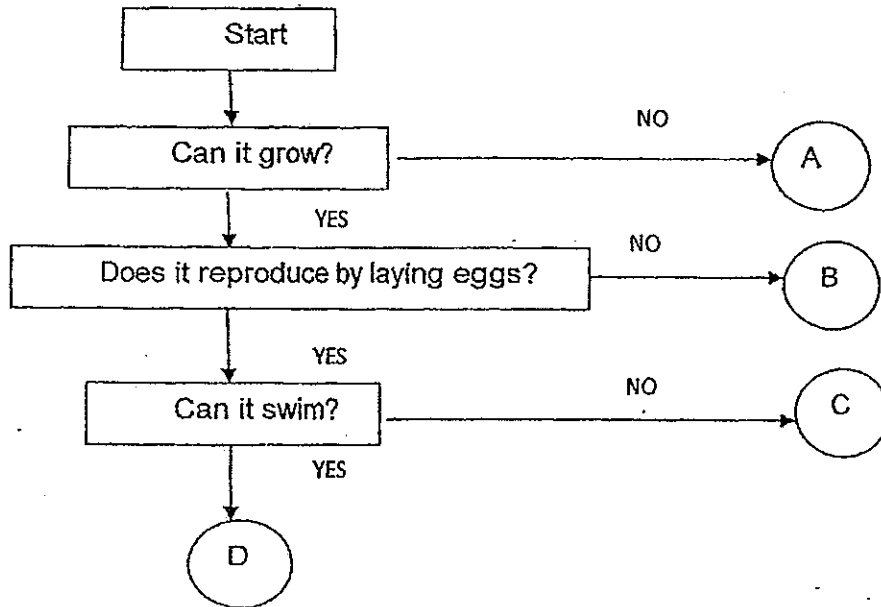
- (1) Ears
 - (2) Eyes
 - (3) Nose
 - (4) Tongue
- ()

3. Which of the following are groups of living things?

- A: Plants
- B: Animals
- C: Fungi
- D: Bacteria

- (1) A and B only
 - (2) B and D only
 - (3) A, B and C only
 - (4) A, B, C and D
- ()

4. Refer to the flowchart below.



Which of the above is most likely to be a mammal?

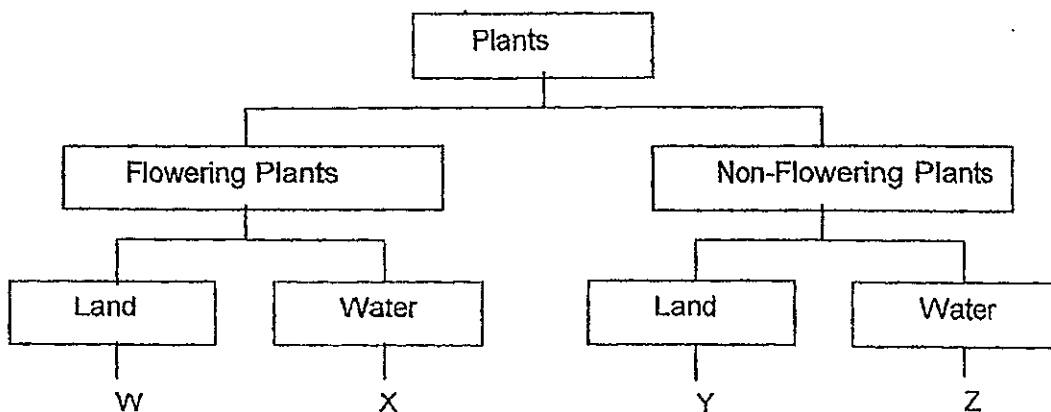
- (1) A
 - (2) B
 - (3) C
 - (4) D
- ()

5. Which of the followings are common characteristics of fish?

- A: All have gills
- B: All lay eggs
- C: All have fins
- D: All live in water

- (1) A and C only
 - (2) B and D only
 - (3) A, C and D only
 - (4) A, B, C and D
- ()

6. Study the classification chart below.



Read about the plant that Florence has found.
She found a plant in a pond. It was floating on the water. She turned the underside of the leaves and found neatly arranged spore bags.

In which group can the plant be placed?

- (1) W (2) X
(3) Y (4) Z ()

7. Study the headings of two groups, R and S as shown in the table below.

	Group R	Group S
(1)	Does not make its own food	Makes its own food
(2)	Can be seen without using a microscope	Can only be seen using a microscope
(3)	Reproduce by splitting into two	Reproduce by spores
(4)	Can move by itself	Cannot move by itself

Which headings can help to put bacteria in Group R and Fungi in Group S?

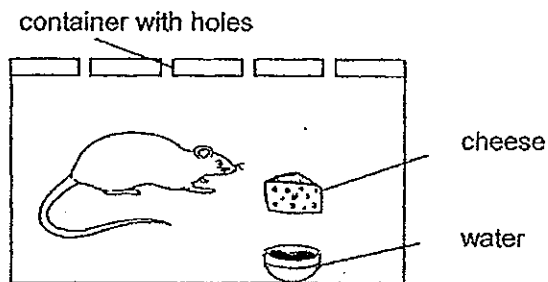
()

End of Part 1

Part II (16 marks)

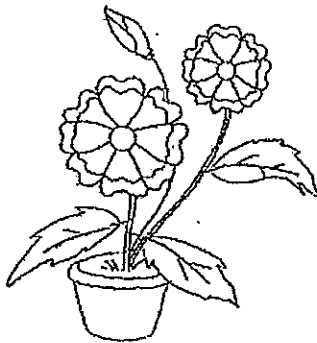
For questions 8 to 12, write your answers in the blanks provided.

8. Tom kept a mouse in a plastic container as shown below.



(a) After a month, the mouse was still alive. Explain why. (1m)

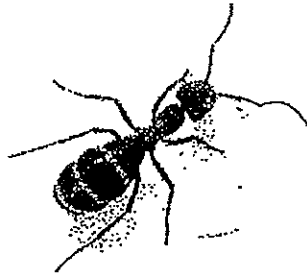
Tom also had a pot of plant with soil as shown below. He watered it every day. He observed that the pot of plant grew better when placed near a window than further away from the window.



(b) Why does the plant grow better when placed near a window? (1m)

(c) Name two characteristics of living things not observed above. (1m)

9. Ariel found an organism P as shown below.



Organism P

(a) How many legs and body parts does the organism P have? (1m)

Legs: _____

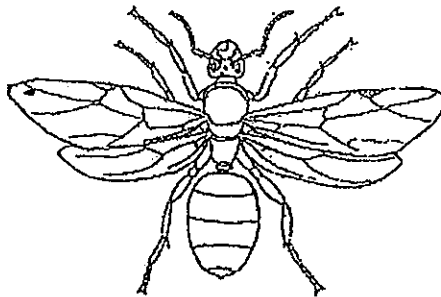
Body parts: _____

(b) In which group of animals will you put organism P? (1m)

After some time, the organism P started moving towards a sugar cube although it cannot see very well.

(c) Which sense has organism P used instead of sight? (1m)

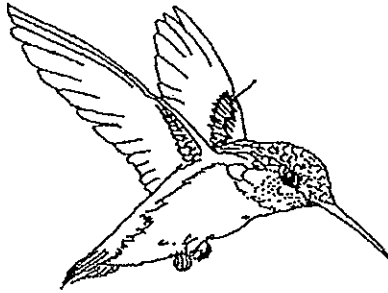
She saw another organism Q which belongs to the same group of animals.



Organism Q

(d) State a difference between the two organisms, P and Q. (1m)

10. Mei saw an animal as shown below.

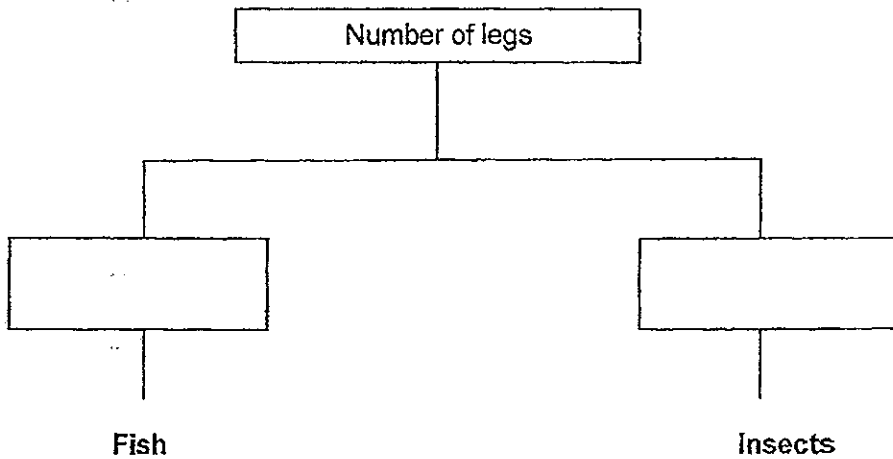


(a) Label the parts, **Beak** and **Feathers**, in the picture above. (1m)

(b) Which group of animals does the above animal belong to?
Support your choice. (1m)

Mei wanted to classify the two groups, **Insects** and **Fish**, based on the number of legs.

(c) Complete the chart below to classify the two groups of animals. (2m)



11. There were three groups of cows in a farm. Each group was fed with different types of food, A, B or C. The weights of the cows were recorded as shown in the table below.

Time / Type of food	Food A	Food B	Food C
	Weight of the cows (kg)		
At Birth	20	18	22
12 months	120	130	110
24 months	180	190	160
36 months	220	240	200

- (a) Which type of food (A, B or C) caused the cows to grow the most?
Support your choice. (1m)

The farmer observed that number of cows fed by food A has increased after 36 months.

- (b) Why was there an increase in the number of cows fed by food A? (1m)

12. Mr Tan carried out an experiment to find out if garlic juice is good at killing bacteria. He prepared three petri dishes, A, B and C, as shown in the table below.

Petri dish	Things in the petri dish
A	10 ml of milk only
B	10 ml of milk and a small amount of Bacteria E
C	10 ml of milk ,a small amount of Bacteria E and garlic juice

He recorded the size of the bacteria colony in the table below.

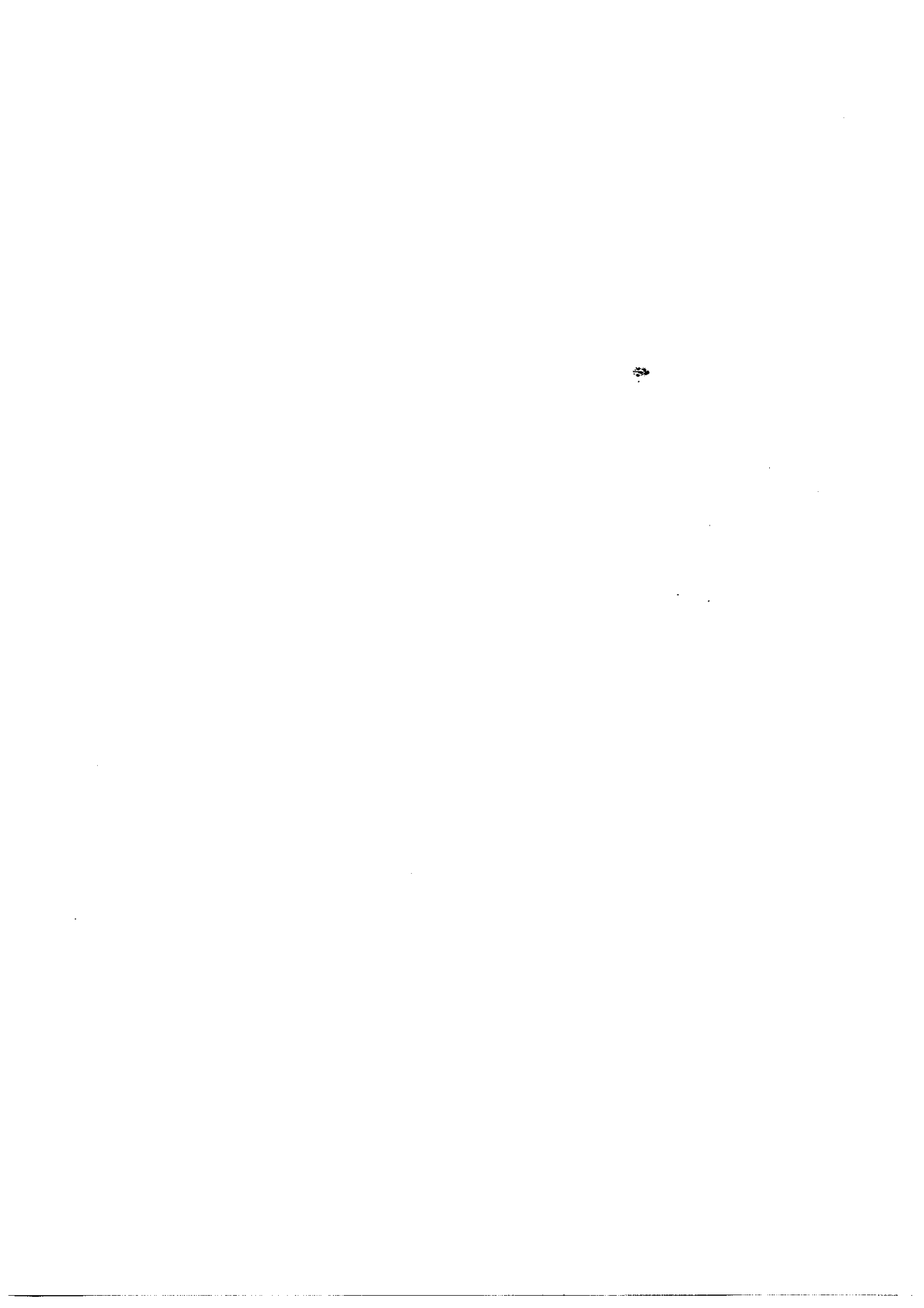
Petri Dish	Size of bacteria colony (mm)			
	Day 1	Day 2	Day 3	Day 5
A	0	2	3	7
B	0	4	8	37
C	0	0	0	0

- (a) In which petri dishes are the bacteria growing? (1m)

- (b) Where do you think the bacteria came from in petri dish A? (1m)

- (c) Do you think garlic juice is good at killing bacteria?
Support your choice. (1m)

End of Paper



ANSWER SHEET

EXAM PAPER 2013

SCHOOL : ROSYTH PRIMARY SCHOOL

SUBJECT : PRIMARY 3 SCIENCE

TERM : CA1 (TROPICAL TEST)

Q1	Q2	Q3	Q4	Q5	Q6	Q7
2	3	4	3	3	4	3

Section B

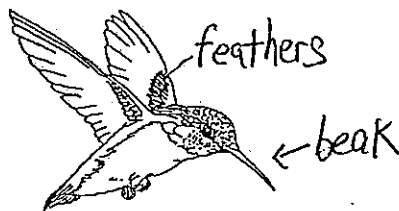
Q8

- a) It has air, food and water
- b) It has more sunlight to make food.
- c) Living things reproduce and respond to changes

Q9

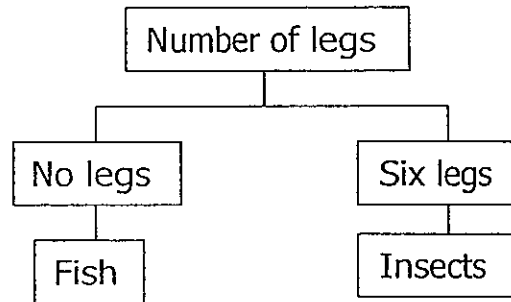
- a) Legs: It has six legs
Body parts: It has three body part
- b) Insects
- c) Touch, Taste, Smell and Hearing
- d) Organism Q has wings but organism P does not have wings.

Q10a)



b) This animal belongs to birds, as it has feathers and a beak.

c)



Q11

a) Food B, it has the highest kg.

b) The cows had reproduced.

Q12

a) A and B

b) The bacteria came from the milk

c) Yes, there is no bacteria in C because the garlic has killed the bacteria.