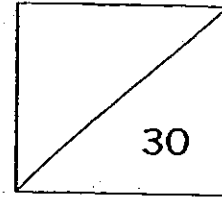


HENRY PARK PRIMARY SCHOOL
TERM 3 2013
ENGLISH LANGUAGE QUIZ 3
PRIMARY 2



Name: _____

Class: Pr 2 _____

Parent's Signature

Section A: Vocabulary MCQ (5 marks)

Choose the most suitable answer and write its number in the brackets provided.

1. Some animals store food before _____ as it will be too cold to find food when it snows.
(1) autumn
(2) spring
(3) summer
(4) winter ()

2. "Oh no! A brown _____ with a long bushy tail snatched my packet of nuts from me and went up that tree!" cried Dylan.
(1) dog
(2) owl
(3) rabbit
(4) squirrel ()

3. Bongo the Owl lived in a hole in the _____ of an old tree.
(1) branch
(2) leaf
(3) trunk
(4) twig ()

4. Elliot likes to read and often goes to the _____ to borrow books.

- (1) bookshop
- (2) field
- (3) library
- (4) playground

()

5. Elizabeth has a pet _____. She likes watching it spin webs.

- (1) ant
- (2) beetle
- (3) butterfly
- (4) spider

()

Section B: Grammar MCQ (5 marks)

Choose the most suitable answer and write its number in the brackets provided.

6. Sarah _____ very early last night as she was very tired.
(1) sleep
(2) sleeps
(3) slept
(4) sleeping ()
7. Ryan and Ken walk to school by _____.
(1) himself
(2) ourselves
(3) yourselves
(4) themselves ()
8. Joe was excited _____ he was going to the Yakult factory.
(1) as
(2) or
(3) but
(4) then ()
9. Kate _____ up at 7 o'clock in the morning every day before she goes to school.
(1) wake
(2) wakes
(3) woke
(4) waking ()
10. "Would you like to walk to the canteen _____ me?" asked Ian.
(1) in
(2) to
(3) for
(4) with ()

Section C: Vocabulary Cloze (4 marks)

Fill in the blanks with the correct word from the box. Use each word only ONCE.

| | | | |
|--------|----------|-------|--------|
| person | creature | idea | zoo |
| fault | leaf | stone | forest |

One early autumn morning, two woodcutters went into the (11) _____ to chop down some trees. After a while, Gabriel and Tony became tired and decided to stop for a rest. As they were drinking from their water bottles, Gabriel saw an owl sitting in a nearby tree.

"Tony, look! An owl!" Gabriel whispered excitedly.

"What a magnificent (12) _____! Let's scare it away!" replied Tony.

Tony picked up a (13) _____ near his feet and threw it at the owl. Oh no! It hit a nearby beehive instead! A swarm of bees flew out of the hive immediately and went straight for the both of them.

"Aaarrgghh! Run! It's all your (14) _____ for hitting the beehive!" shouted Gabriel.

"Sorry!" Tony screamed back as they ran helter-skelter.

Section D: Grammar Cloze (3 marks)

Fill in the blanks with the correct word from the box. Use each word only ONCE.

| | | | |
|------|-------|------|---------|
| tell | tells | told | telling |
|------|-------|------|---------|

Joel and Gary were in trouble. They had just knocked down an expensive bottle of Japanese soy sauce from a shelf.

"We need to (15) _____ someone about this," Gary said to Joel.

The boys walked up to the cashier and (16) _____ her what happened.

"Don't worry, boys. Look, my manager is (17) _____ the cleaner to clear up the mess," the cashier said to the boys.

The two boys were glad that they were not scolded and heaved a sigh of relief.

Section E: Editing (3 marks)

Read the passage carefully. Each of the underlined words contains a spelling error. Write the correct word in each of the boxes provided.

Willy and Hugh went to the library to read some books. "I do not like reading books! It's boring and I take too long to finish one," sneared 18. Hugh.

"It's alright. Here, let me read you one of my favourite books. It's funny!" replied Willy.

When Willy started reading, Hugh was amased at how good Willy was at reading a story. Hugh burst out in laughter as Willy read a joke from the book. Everyone in the library stared at Hugh. "Shhh...!" they said.

"You are not uselas after all. In fact, you're very talented!" Hugh 20. claimed.

BLANK PAGE

Section F: Comprehension Open-Ended (10 marks)

Read the following passage carefully and answer the questions that follow.

Owls are mysterious birds. They like lonely places. In many countries, people see the owl as a wise animal.

A mother owl lays her eggs two to three days apart. The father owl and mother owl sometimes take turns sitting on the eggs.

Most owls sleep during the day and hunt during the night. These owls are nocturnal animals. Compared to most other birds, owls have bigger eyes and a better sense of hearing. This allows them to catch their prey.

Owls fly silently through the air so that small animals such as mice, frogs and insects do not know that they are flying above. When an owl sees a small animal, it swoops down quickly and grabs it with its sharp claws.

Do you know that owls see in black and white? This means that they are colour blind. Unlike most birds which have their eyes at the side of their heads, owls' eyes face the front. Owls cannot move their eyes. They have to move their heads to look up and down and to the sides.

(Adapted from [http:// www.anglomaniacy.pl](http://www.anglomaniacy.pl))

21. Fill in the blanks with the correct word from paragraph 1.

Owls are _____ and _____ birds.

22. From the passage, what small animals do owls eat?

23. What do owls use to grab their prey?

24. a) Tick (✓) 2 colours owls cannot see.

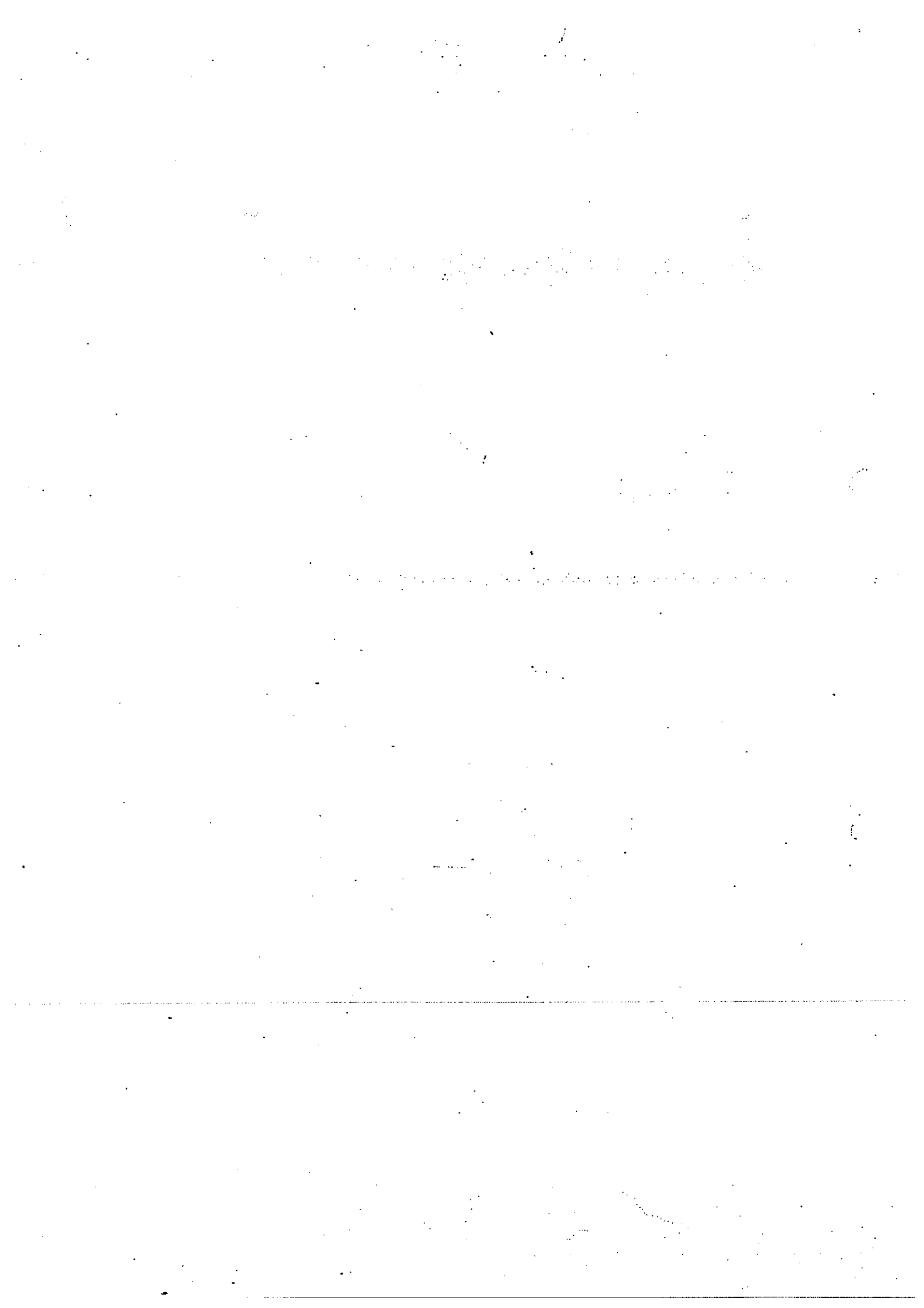
| Colour | Tick (✓) |
|--------|----------|
| white | |
| pink | |
| blue | |
| black | |

b) From the passage, explain why owls cannot see the colours you have ticked.

25. Which word in paragraph 3 has the same meaning as 'being more active at night'?

The word is '_____.'

----- END-OF-PAPER -----



ANSWER SHEET

EXAM PAPER 2013

SCHOOL : HENRY PARK PRIMARY SCHOOL

SUBJECT : PRIMARY 2 ENGLISH

TERM : CA2 (English Language Quiz 3)

| Q1 | Q2 | Q3 | Q4 | Q5 | Q6 | Q7 | Q8 | Q9 | Q10 |
|----|----|----|----|----|----|----|----|----|-----|
| 4 | 4 | 3 | 3 | 4 | 3 | 4 | 1 | 2 | 4 |

Section C

Q11) forest

Q12) creature

Q13) stone

Q14) fault

Section D

Q15) tell

Q16) told

Q17) telling

Section E

Q18) sneered

Q19) amazed

Q20) useless

Section F

Q21) Wise and mysterious

Q22) Owls eat small animals such as, mice, frogs and insects

Q23) Owls use their sharp claws to grab their prey

(a) Q24) Pink, Blue

(b) Q24) Owls cannot see those colours as they are colour blind

Q25) nocturnal

