

Anglo-Chinese School (Junior)



CONTINUAL ASSESSMENT 1 (2016)

PRIMARY 5

MATHEMATICS

Monday

7 March 2016

1 h 30 min

Name: _____ () Class: 5.() Parent's Signature: _____

INSTRUCTIONS TO PUPILS

- 1 Do not turn over the pages until you are told to do so.
- 2 Follow all instructions carefully.
- 3 Answer ALL questions.
- 4 You are **not** allowed to use a calculator for this paper.

Section	Possible Marks	Marks Obtained
A	10	
B	15	
C	25	
Total	50	

This question paper consists of 14 printed pages (inclusive of cover page).

Optical Answer Sheet

1
2
3
4
5
6
7

Section A

Questions 1 to 4 carry 1 mark each. Questions 5 to 7 carry 2 marks each.
For each question, four options are given. One of them is the correct answer.
Make your choice (1, 2, 3 or 4). Shade the correct oval (1, 2, 3 or 4) on the Optical Answer Sheet (OAS). (10 marks)

1. What is the value of the digit '3' in 1 234 567?

- 1) 3 x 100
- 2) 3 x 1 000
- 3) 3 x 10 000
- 4) 3 x 100 000

2. Find the value of $1 - \frac{1}{4} - \frac{1}{3}$

- 1) $\frac{5}{12}$
- 2) $\frac{7}{12}$
- 3) $\frac{2}{7}$
- 4) $\frac{5}{7}$

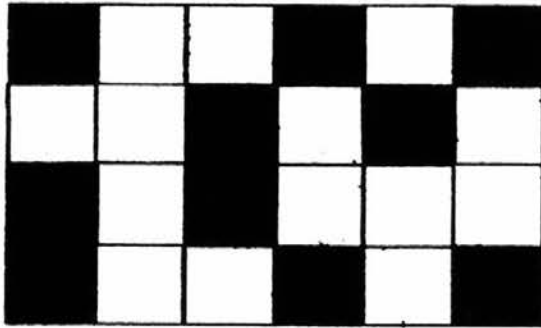
3. The table below shows the postage rates of sending parcels by air to China.

Postage Rates (by air) to China	
First 5 kg	Every additional 1 kg or part thereof
\$30	\$5

Yang Guo sent a 10 kg 600 g parcel to his cousin in China by air. How much did he pay?

- 1) \$55
 - 2) \$60
 - 3) \$175
 - 4) \$180
4. What is the answer when you round off 9.899 to 2 decimal places?
- 1) 9.80
 - 2) 9.89
 - 3) 9.90
 - 4) 10.00
5. For every 7 pies Chloe baked, she also baked 8 tarts. She baked a total of 105 pies and tarts. How many tarts did Chloe bake?
- 1) 49
 - 2) 56
 - 3) 75
 - 4) 120

6. The figure below is made up of squares. How many more squares must be shaded so that the figure is $\frac{2}{3}$ shaded?



- 1) 6
 - 2) 8
 - 3) 12
 - 4) 16
7. Sally used a ribbon to tie round a square gift box shown below. She used 28 cm of ribbon to tie the bow at the top of the gift box. What was the total length of ribbon she used for the gift box?



- 1) 72 cm
- 2) 96 cm
- 3) 100 cm
- 4) 124 cm

Section B

Questions 8 to 12 carry 1 mark each. Questions 13 to 17 carry 2 marks each. Show your working clearly and write your answers in the spaces provided. For questions which require units, give your answers in the units stated. (15 marks)

8. A number becomes 800 when rounded off to the nearest 100. What is the greatest possible number?

Answer : _____

9. $23 + 280 \div (25 - 21) \times 6 =$

Answer : _____

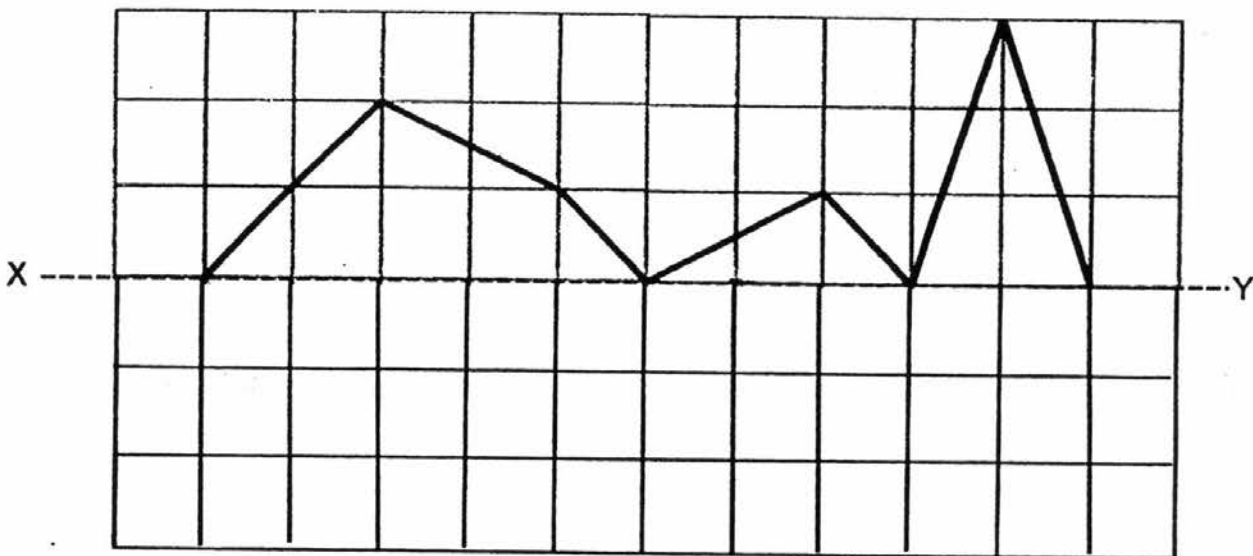
10. Find the value of $\frac{7}{12} + \frac{3}{8}$.

Answer : _____

11. Alfred took 15 min to drive from Singapore to Johor Bahru and 3 h 50 min to drive from Johor Bahru to Malacca. He arrived in Malacca at 18 20. At what time did Alfred start his journey from Singapore?
(Give your answer in the 24-hour clock format)

Answer : _____

12. Complete the following symmetrical figure with XY as the line of symmetry. Draw in the square grid provided.



13. 10 cones are placed at equal distance apart on a straight line. The distance between the first and last cone is 396 m. What is the distance between the third and eighth cone?

Answer : _____ m

14. A pen cost 4 times as much as a pencil. The pen cost \$1.80 more than the pencil. What was the cost of 2 pens?

Answer : \$ _____

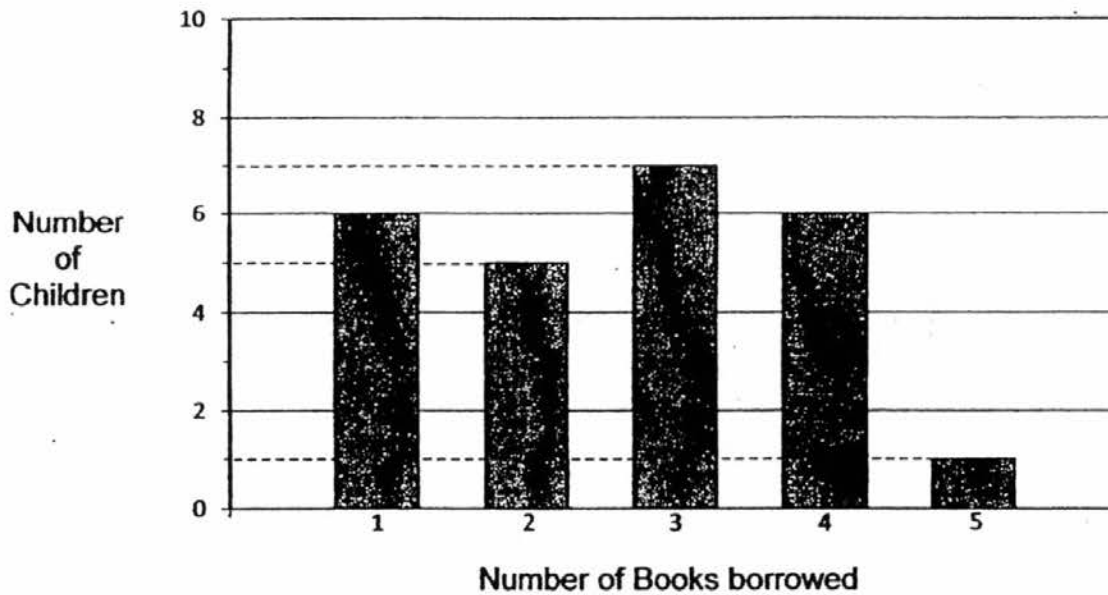
15. Luke goes to the gym once every 4 days. Han goes to the same gym once every 5 days. Given that they first met in the gym on 2nd January, on which day of January would they meet each other again?

Answer : _____ Jan

16. Lisa used $\frac{2}{3}$ l detergent to wash her clothes. Hannah used $\frac{3}{5}$ l less detergent than Lisa to wash her clothes. How many litres of detergent did they use altogether?

Answer : _____ l

17. The bar graph shows the number of books borrowed from the library by a group of children. How many books were borrowed altogether?



Answer : _____

Section C

For questions 18 to 24, show your working clearly and write your answers in the spaces provided. The number of marks available is shown in brackets [] at the end of each question or part-question. (25 marks)

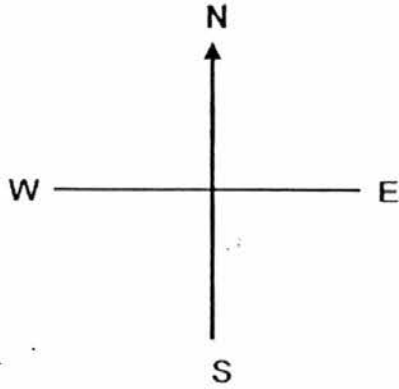
18. Richard had 132 more stamps than Jenny at first. After Jenny gave Richard 45 stamps, Richard had thrice as many stamps as Jenny. Find the number of stamps Jenny had at first.

Answer : _____ [3]

19. Mr Siah bought 9 notebooks of the same kind during a sale. Ms Koh bought 6 such notebooks. She also bought 3 pens at \$2.50 each. Altogether, she spent \$1.20 more than Mr Siah. What was the amount of money Ms Koh spent?

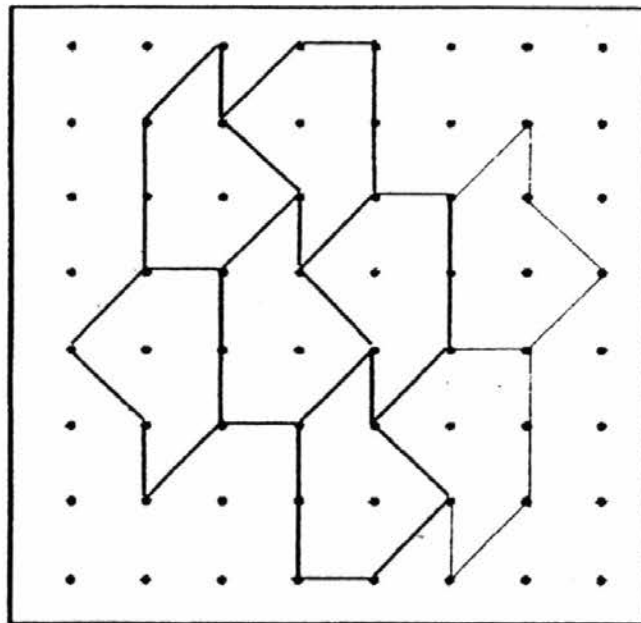
Answer : _____ [3]

20. a) If Roy makes a 135° anti-clockwise turn, he will face South-West. Where will Roy face if he makes a 270° clockwise turn from his original position?



Answer : _____ [1]

- (b) The pattern in the box shows part of a tessellation. Extend the tessellation by drawing **two** more unit shapes in the space provided in the box. [2]



21. There are three times as many motorcycles as cars parked in a car park. There are 390 wheels altogether. Given that a car has 4 wheels and a motorcycle has 2 wheels, how many motorcycles are there?

Answer : _____ [4]

22. Ahmad had 235 marbles more than Carl. Bill had 56 marbles more than Carl. Ahmad had 79 fewer marbles than the total number of marbles Bill and Carl had. How many marbles did the three boys have altogether?

Answer : _____ [4]

23. Mr Lim gave $\frac{5}{8}$ of his salary to his wife. He gave $\frac{1}{5}$ of his salary to his four children and left the rest for himself. He had \$420 left for himself. Given that his four children received the same amount each, how much did each of his four children receive?

Answer : _____ [4]

24. 441 people participated in a marathon. $\frac{7}{9}$ of them were adults and the rest were children. Of the children, $\frac{2}{3}$ of the boys completed the marathon while $\frac{1}{2}$ of the girls completed the marathon. The number of boys who completed the marathon was equal to the number of girls who completed the marathon.

(a) How many children participated in the marathon?

(b) How many children did not complete the marathon?

Answer : (a) _____ [1]

(b) _____ [2]

End of Paper

--

EXAM PAPER 2016

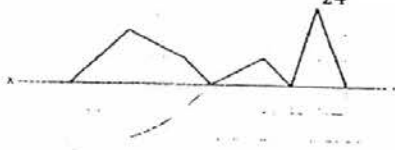
SCHOOL : ANGLO-CHINESE SCHOOL (JUNIOR)
SUBJECT : MATHEMATICS
TERM : CA1

PAPER 1
SECTION A

Q1	Q2	Q3	Q4	Q5	Q6	Q7
3	1	2	3	2	1	4

SECTION B

Q8. 849 Q9. 443 Q10. $\frac{23}{24}$ Q11. 14 15 Q12.



Q13. 220m Q14. \$4.80 Q15. 22nd Jan

Q16. $\frac{11}{15}L$ Q17. 66 books

Q18. $2u = 132 + 45 + 45$

$$= 222$$

$$1u = 222 \div 2 = 111$$

$$J = 111 + 45 = 156 \quad \text{Answer: 156 stamps}$$

Q19. 3 pens = 2.50×3

$$= 7.50$$

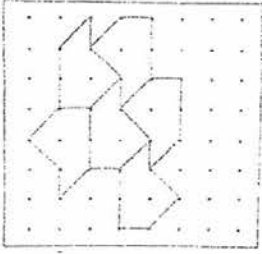
$$3 \text{ notebooks} = 7.50 - 1.20$$

$$= 6.30$$

$$1 \text{ notebooks} = 2.10 \times 9 = 18.90 \quad \text{Ms Koh} = 18.90 + 1.20 + 20.10 \quad \text{Answer: \$20.10}$$

Q20(a) West

Q20(b)



Q21.

$$M \rightarrow 3u \times 2 = 6u$$

$$C \rightarrow 1u \times 4 = 4u$$

10 u

$$10u = 390$$

$$1u = 390 \div 10$$

$$= 39$$

$$\text{Motorcycles} = 39 \times 3$$

$$= 117 \quad \text{Answer: 117 motorcycles}$$

Q22.

$$\text{Bill} = 235 + 79$$

$$= 314$$

$$\text{Carl} = 314 - 56$$

$$= 258$$

$$\text{Total} = (258 \times 3) + 235 + 56$$

$$= 1065 \quad \text{Answer: 1065}$$

$$\begin{aligned} \text{Q23. Left} &= 1 - \frac{5}{8} - \frac{1}{5} - \frac{25}{40} - \frac{8}{40} \\ &= \frac{7}{40} \end{aligned}$$

$$\frac{7}{40} = \$420$$

$$\frac{1}{40} = \$420 \div 7$$

$$= 60$$

$$\frac{8}{40} = 60 \times 8$$

$$= 480$$

$$1 \text{ child} = 480 \div 4 \quad \text{Answer: } \$120$$

$$\text{Q24(a)} \frac{1}{9} = 441 \div 9$$

$$= 49$$

$$\text{Children} = 49 \times 2$$

$$= 98 \quad \text{Answer: } 98 \text{ children}$$

$$\text{(b)} 7u = 98$$

$$1u = 14$$

$$3u = 3 \times 14$$

$$= 42 \quad \text{Answer: } 42 \text{ children}$$