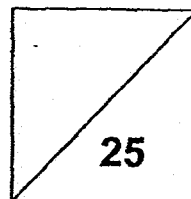


HENRY PARK PRIMARY SCHOOL
TERM REVIEW 2018
PRIMARY 4 SCIENCE



Name: _____ () Date: 26 FEB 2018

Class: Pr 4 _____

Parent's Signature: _____

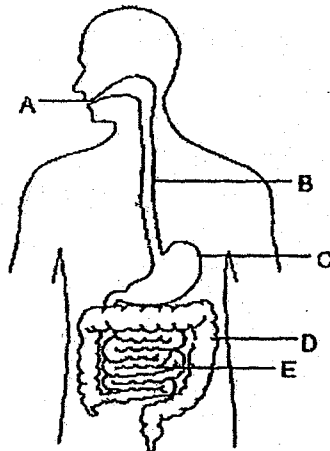
Duration: 40 minutes

Section A: Multiple-Choice Questions (14 marks)

For each question from 1 to 7, four options are given. One of them is the correct answer. Make your choice (1, 2, 3 or 4) and write the correct answer (1, 2, 3 or 4) in the table provided.

Q1	Q2	Q3	Q4	Q5	Q6	Q7

1 The diagram shows the organs of the human digestive system, A, B, C, D and E.



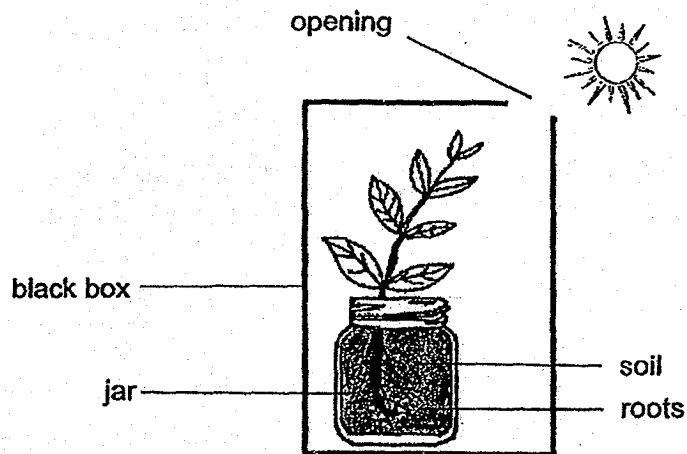
Which of the following organs do not carry out the process of digestion?

- (1) A and B
- (2) B and D
- (3) A, B and D
- (4) B, D and E

2 Which of the following is a function of the human skeletal system?

- (1) protects organs in the body
- (2) protects the muscular system
- (3) transports blood around the body
- (4) transports food in the digestive system

3 Ali observed a plant growing in a black box with an opening. The plant is watered daily.



Which one of the following explains why the plant grew towards the opening?

- (1) The plant has to be watered daily.
- (2) The leaves need to obtain sunlight.
- (3) The stem could not support the leaves.
- (4) The roots could not hold the plant firmly to the soil.

4 Anna studied a living thing and made the following conclusions.

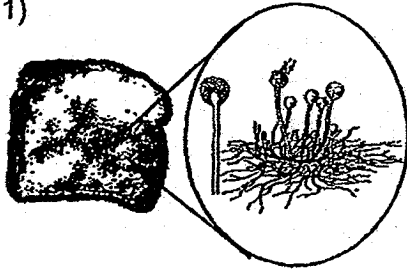
A: It reproduces by spores.

B: It does not make its own.

C: It feeds on living things, dead or alive.

Which of the following could the living thing be?

1)



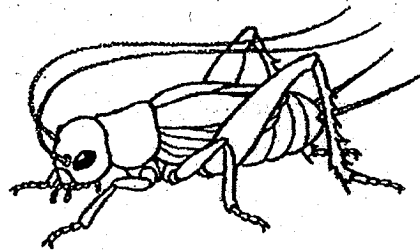
2)



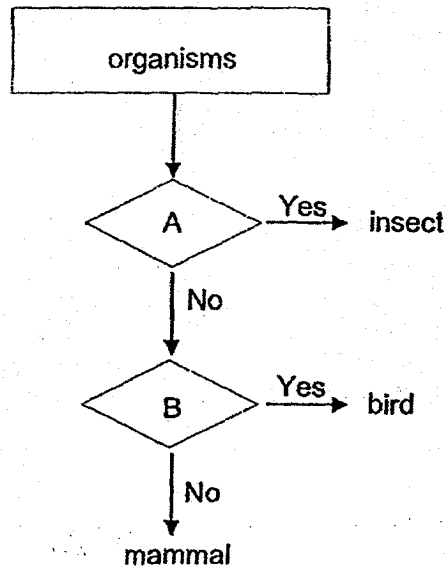
3)



4)



5 Study the flow chart below.



Which of the following shows the characteristics represented by A and B?

Characteristics		
	A	B
(1)	has fur	has a beak
(2)	has wings	lays eggs
(3)	has six legs	has feathers
(4)	has hard body covering	has hair as body covering

6 Sally placed an object near a magnet.
She observed that the object moved towards the magnet.

Which of the following is the object likely to be made of?

- (1) steel
- (2) silver
- (3) rubber
- (4) copper

- 7 Shaun wanted to find out how the height a ball is dropped from affects its bouncing height.

	Ball A	Ball B	Ball C	Ball D
Material	rubber	plastic	rubber	plastic
Size	big	medium	big	small
Colour	green	red	blue	yellow
Mass	10g	5g	10g	5g
Height the ball is dropped from	1 m	2 m	3 m	2m

Which of the balls in the table above should he choose in order to carry out a fair test?

- (1) A and B
- (2) B and C
- (3) B and D
- (4) A and C

Section B: Open-Ended Questions (11 marks)

For questions 8 to 11, write your answers in the spaces given.

8 The diagrams below show two organisms.



Rose Plant

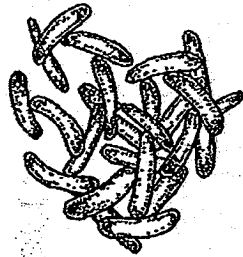


Fern

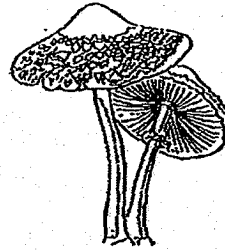
a) State a similarity between the Rose Plant and the Fern in the way they obtain food. [1]

b) State a difference in the way the Rose Plant and the Fern reproduce. [1]

9 The diagrams show two groups of living things.



bacteria

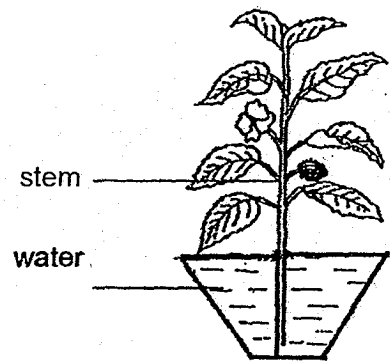


fungi

Complete the following table by writing 'True' if the statement is true or 'False' if the statement is false in the boxes provided. [2]

	Statement	True or False
(a)	Both bacteria and fungi can reproduce.	
(b)	Both bacteria and fungi make their own food.	
(c)	Some bacteria and fungi are useful.	
(d)	Fungi can only be seen under a microscope.	

10 The diagram below shows a plant, Q, in a pot of water.

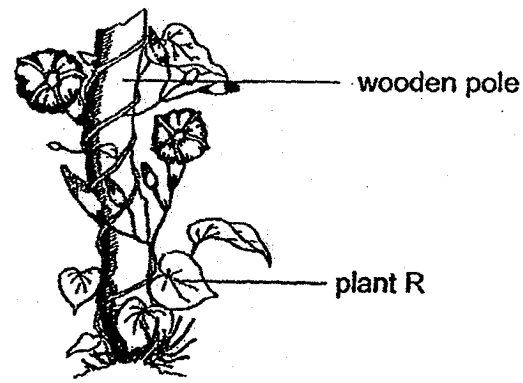


Plant Q

Mary added red dye in the water.

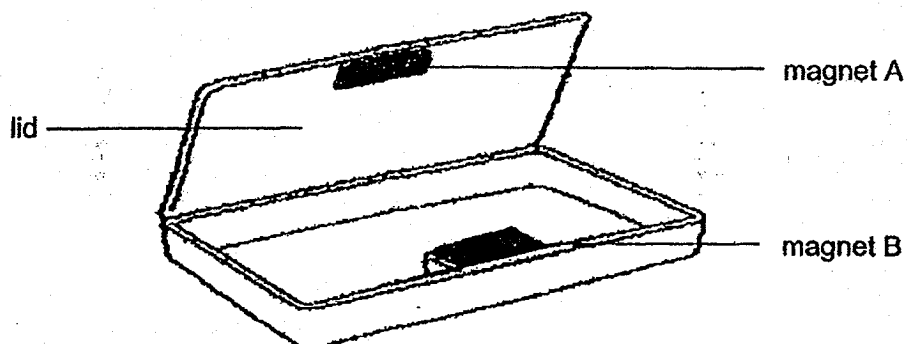
a) What will she observe about the leaves of plant Q after two days? Give a reason for your answer. [2]

Mary observed another plant, R, in the garden as shown in the diagram below.



b) Both plants, Q and R, need sunlight to make food. State a difference in the way plant R reach for sunlight compared to plant Q. [2]

- 11 Siti bought a pencil case as shown below. It makes use of two pieces of magnets, A and B, to keep the lid shut.



- a) Identify the poles of the magnets A and B that are facing each other. [1]

Magnet A: _____

Magnet B: _____

- b) Siti wanted to replace magnet A so that the lid can still be shut **tightly**. Which one of the objects, copper, aluminium or steel, should she use? [1]

- c) Give a reason for your answer in (b). [1]



EXAM PAPER 2018 (P4)

SCHOOL : HENRY PARK

SUBJECT : SCIENCE

TERM : CA1

Q1	Q2	Q3	Q4	Q5	Q6	Q7
2	1	2	1	3	1	4

Q8) a) They both make their own food.

b) The Rose Plant reproduces by seeds but the Fern reproduces by spores.

Q9) a) True

b) False

c) True

d) False

Q10) a) Stems have tubes that transports the water with the red dye to the leaves.

b) Plant R has a walk stem and needs to climb the wooden pole for support but Q has a strong stem that can hold itself upright.

Q11) a) Magnet A : North

Magnet B : South

b) Steel

c) Steel is a magnetic material .