

**Catholic High School
Primary 4 Science 2019
Weighted Assessment 1**

Name: _____ ()

MARKS	15
-------	----

Class: Pri 4 _____

Date: 1 March 2019

Parent's Signature: _____

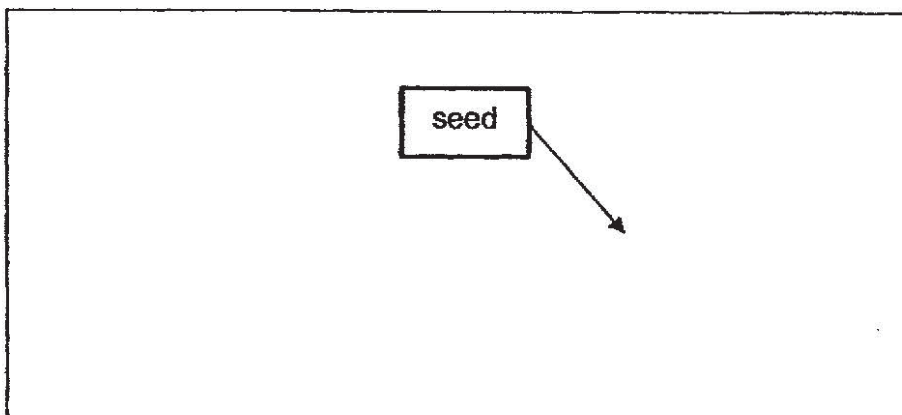
1. Completion of the Grow a Bean Plant Activity (Teacher to fill in) [3]

Based on the Grow a Bean Plant activity which you have completed, answer questions 2 and 3.

2. (a) Which part of the bean grew first? [1]

- (b) Give a reason why your answer in part (a) grew first. [1]

3. (a) Draw the life cycle of the bean plant in the space below. One of the stages has been drawn for you. [2]



- (b) When does the bean plant start to make its own food? [1]

CHS/Sc/P4/WA1/2019

SCORE	8
-------	---

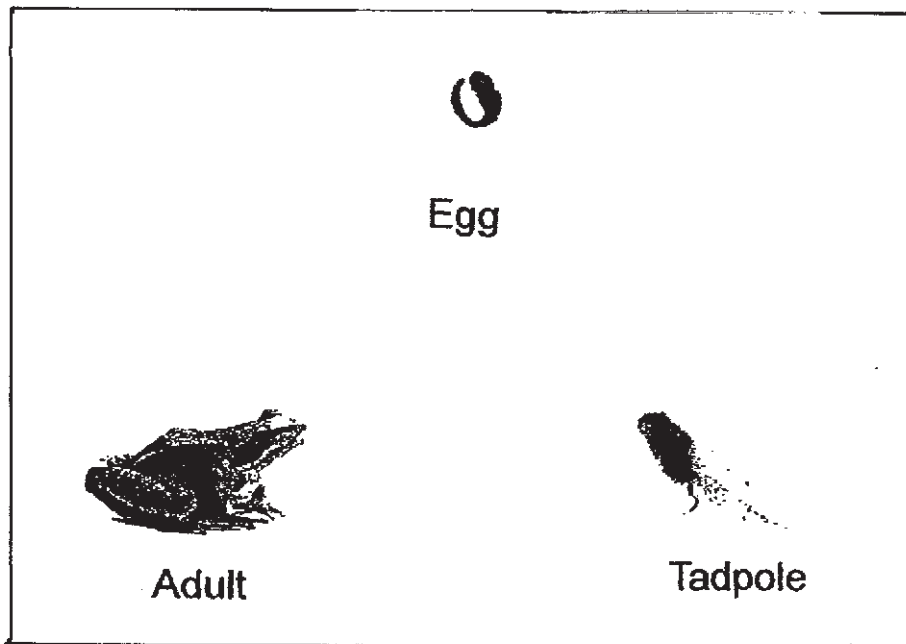
4. The table below shows some characteristics of the life cycle of a mosquito. [2]
Name the stage(s) in the space provided.

	Characteristics	Stage(s)
(i)	Moult several times as it grows.	
(ii)	Stops eating but continues to grow.	

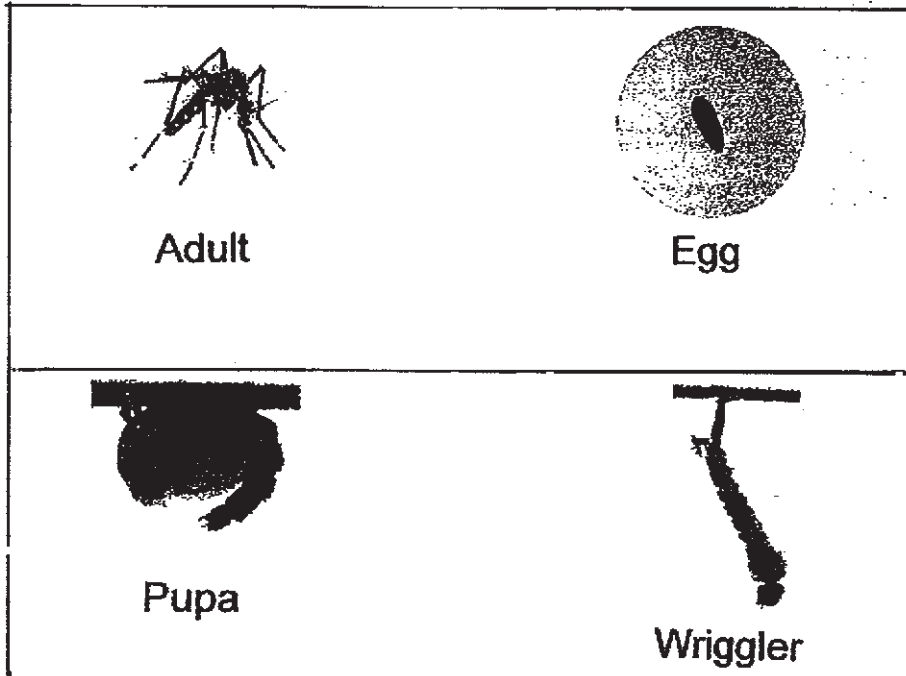
5. Why do some animals, like the frog, lay many eggs? [1]

SCORE	3
-------	---

6. (a) Cut out the given pictures of the stages in the life cycle of a frog. Using the pictures, complete the life cycle of a frog in the space below. [2]



- (b) Cut out the given pictures of the stages in the life cycle of a mosquito. Using the pictures, complete the life cycle of a mosquito in the space below. [2]



SCORE	4
-------	---

SCHOOL : CATHOLIC HIGH PRIMARY SCHOOL

LEVEL : PRIMARY 4

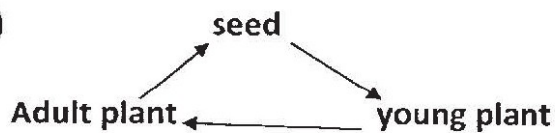
SUBJECT : SCIENCE

TERM : 2019 CA1

2)a)The roots.

b)The plant need to absorb water and mineral salts.

3)a)



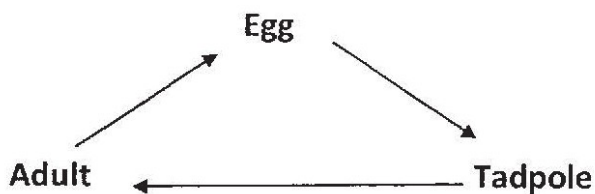
b)When the first true leaves appears.

4)i)wiggler

ii)pupa

5)To ensure some of the eggs hatch and develop into adults.

6)a)



b)

