



AI TONG SCHOOL

2011 CONTINUAL ASSESSMENT (1)

PRIMARY FOUR SCIENCE

DURATION : 1hr 45 min

DATE: 3rd March 2011

INSTRUCTIONS

Do not open the booklet until you are told to do so.

Follow all instructions.

Answer all questions.

Name: _____ ()

Class : Primary _____

Parent's Signature: _____

Date : _____

MARKS	
--------------	--

Section A (30 x 2 marks)

For each question from 1 to 30, four options are given. One of them is the correct answer. Make your choice (1, 2, 3 or 4). Shade the correct oval (1, 2, 3 or 4) on the Optical Answer Sheet.

1. Which of the following are examples of matter?

- A Heat
- B Light
- C Air
- D Water

- (1) A and B only
- (2) B and C only
- (3) C and D only
- (4) B, C and D only

2. Which one of the following statements is not true?

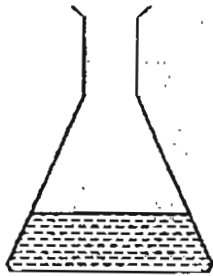
- (1) All matter has volume.
- (2) All living things are matter.
- (3) All non-living things are not matter.
- (4) Matter has mass and occupies space.

3. Determine which of the following statements is/are true.

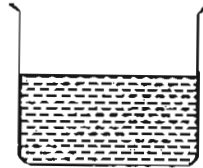
- A Fungi are not plants because they reproduce from seeds.
- B Fungi are not plants because they have flowers.
- C Fungi are not plants because they bear fruits.
- D Fungi are not plants because they do not have chlorophyll.

- (1) D only
- (2) A and D only
- (3) B and D only
- (4) C and D only

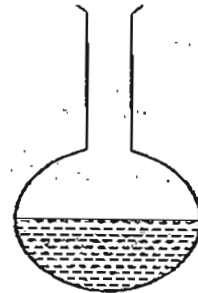
4. Shemaine was given 3 different containers. Each container contains 500 ml of water.



500 ml



500 ml



500 ml

Based on the set-up above, she concluded that _____.

- (1) water can be compressed
- (2) water has no definite mass
- (3) water has no definite volume
- (4) water takes the shape of its container

5. The picture below shows a bag of cement and a bag of feathers.



5 kg



5 kg

Which one of the following statements is true?

- (1) The bag of feathers is lighter than the bag of cement.
- (2) The bag of cement is heavier than the bag of feathers.
- (3) The bag of cement has the same mass as the bag of feathers.
- (4) The bag of feathers has the same volume as the bag of cement.

6. Rachel observed the properties of 3 objects – A, B and C. She recorded her observations in the table below.

Properties	A	B	C
Has definite shape	No	Yes	No
Has definite volume	Yes	Yes	No
Occupies space	Yes	Yes	Yes

What can B be?

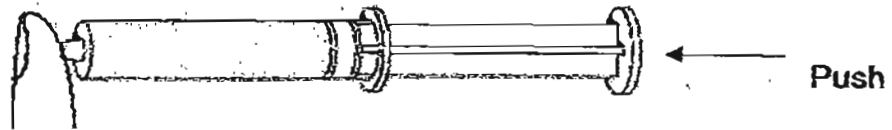
- (1) Air
- (2) Ball
- (3) Water
- (4) Shadow

7. Which of the following properties best describe a book?

- A It cannot be compressed.
- B It has a definite shape.
- C It has a definite volume.
- D It has mass.

- (1) A and B only
- (2) A and C only
- (3) B and C only
- (4) A, B, C and D

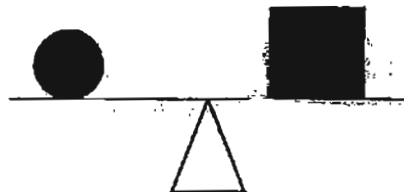
8. Josiah filled a syringe with water. He covered the nozzle with his finger. When he tried to push the plunger in the direction shown, he was not able to push it all the way in.



The experiment shows that water _____

- (1) can be compressed
- (2) has a definite shape
- (3) has no definite volume
- (4) cannot be compressed

9. A level balance stayed level when two objects were placed on each side.



This shows that the two objects _____

- (1) are of the same size
- (2) have the same mass
- (3) have the same volume
- (4) are made of different materials

10. Ali placed 3 similar seeds in 3 different locations. They were watered regularly. After 2 weeks, he measured the height of the 3 young plants. He put them into a table as shown below.

Location X	Location Y	Location Z
6 cm	12 cm	20 cm

What could be the possible places for those 3 locations?

	Location X	Location Y	Location Z
(1)	Garden	Cupboard	Kitchen
(2)	Cupboard	Kitchen	Garden
(3)	Kitchen	Cupboard	Garden
(4)	Garden	Kitchen	Cupboard

11. Two identical plants, Plant A and Plant B, were planted in a garden. However, Plant A had all its leaves plucked out. What is the likely outcome after 1 week?

- (1) Plant A withers and dies.
- (2) Plant A begins to bear fruits.
- (3) Plant A grows faster than Plant B
- (4) Plant A starts to have flowers growing on it.

12. Mei Mei placed a potted plant near a window. After a few weeks, she noticed that the plant was growing towards the window.



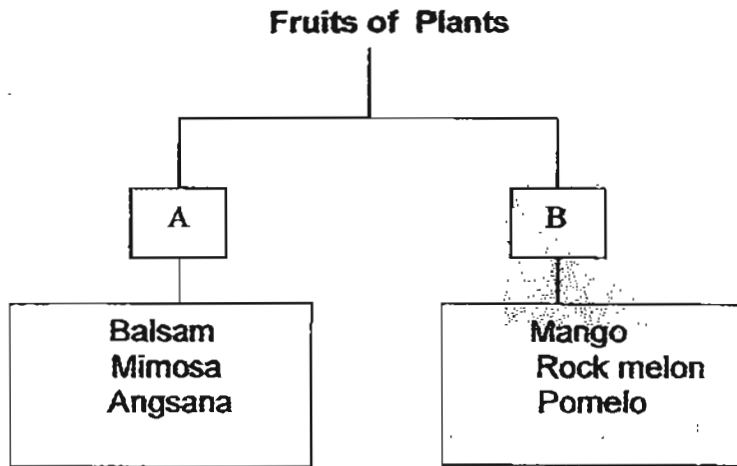
This is because the plant _____.

- (1) is withering and dying
- (2) is responding to gravity
- (3) does not have enough water
- (4) needs sunlight to make food

13. Which pair of living things below has been correctly classified?

	Non-flowering plants	Fungi
(1)	Bird's Nest Fern	Algae
(2)	Mimosa	Yeast
(3)	Staghorn Fern	Toadstool
(4)	Cactus	Moss

14. Study the classification chart below.



How are the fruits above classified?

	A	B
(1)	Inedible	Edible
(2)	Edible	Inedible
(3)	Many seeds	One seed
(4)	One seed	Many seeds

15.

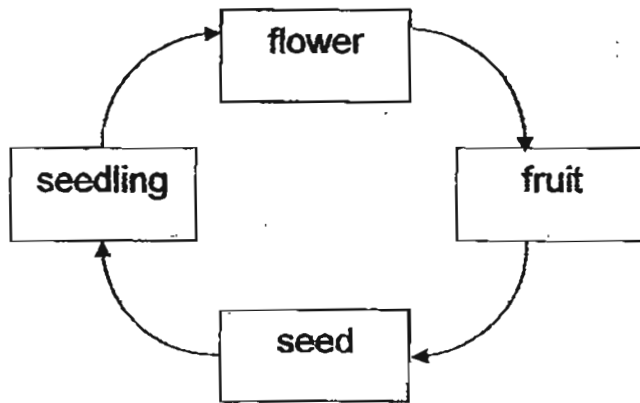


Which part of the plant in the diagram above helps it to climb up the pole?

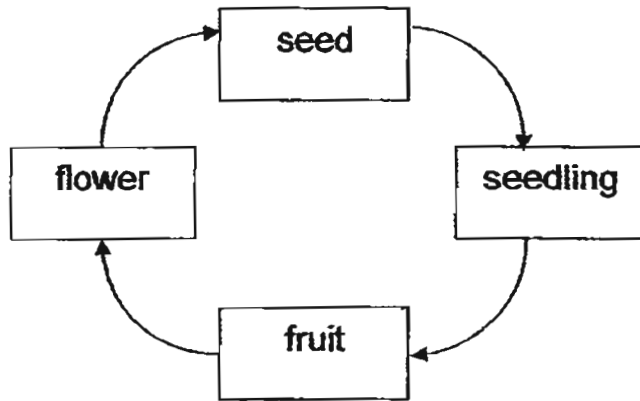
- (1) leaf
- (2) stem
- (3) roots
- (4) flowers

16. Which one of the diagrams shows the correct life cycle of a flowering plant?

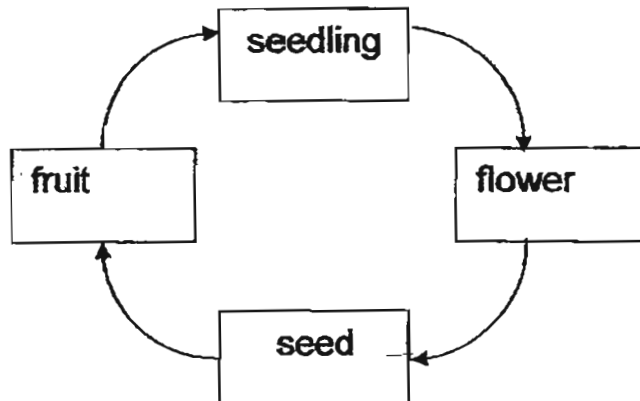
(1)



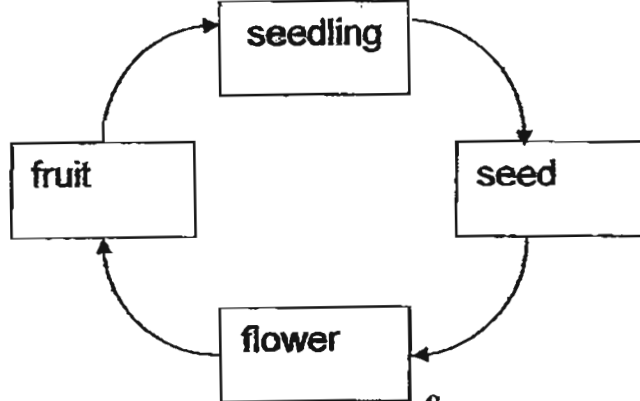
(2)



(3)



(4)



17. Which one of the following is a characteristic of all living things?

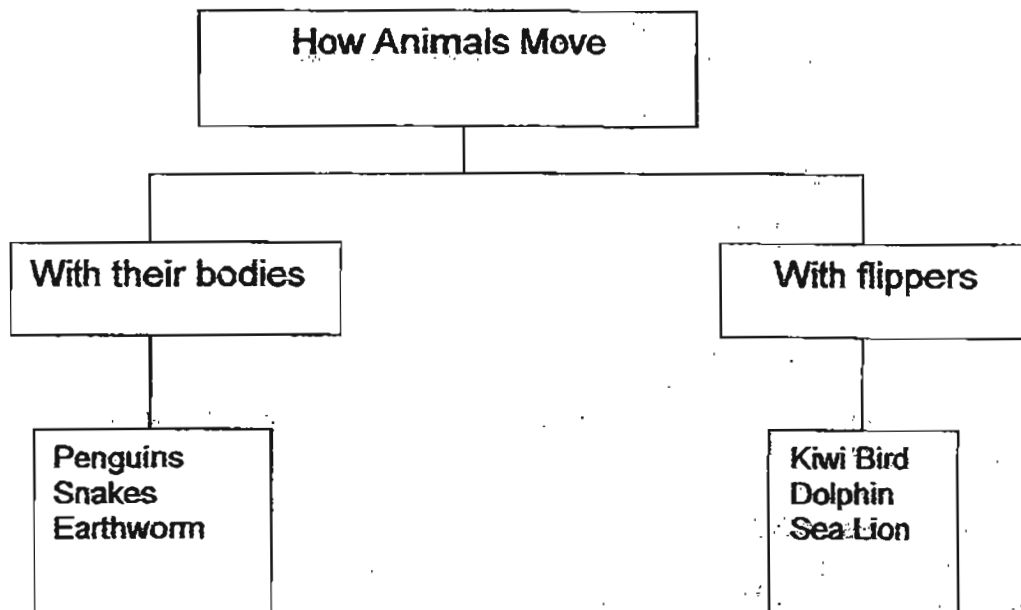
- (1) Responds to changes.
- (2) Eats other animals as food.
- (3) Flies from place to place.
- (4) Reproduces by giving birth to their young alive.

18. Which one of the following mammals do not lay eggs?

- A Dog
- B Chimpanzee
- C Spiny Anteater
- D Dolphin
- E Platypus

- (1) A and B only
- (2) C and D only
- (3) C and E only
- (4) A, B and D only

19. Study the classification chart below.



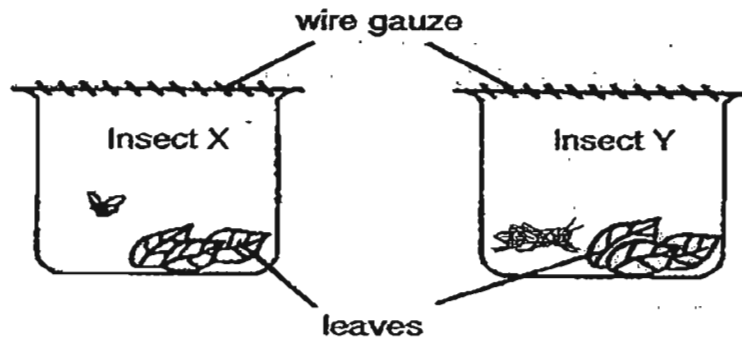
Which two of the animals have been wrongly grouped?

- (1) Penguins and Sea Lion
- (2) Penguins and Kiwi Bird
- (3) Snakes and Dolphin
- (4) Earthworm and Sea Lion

20. Which one of the following animals is correctly matched to its body covering?

	Animal	Body Covering
(1)	Frog	scales
(2)	Anteater	feathers
(3)	Dolphin	hair
(4)	Penguin	fur

21. Two different insects, Insect X and Insect Y were put separately into two beakers. An equal number of leaves were put into each of the beakers.



At the end of one week, Insect X was dead whereas Insect Y was still alive.
Why?

- (1) Insect X is a meat eater.
- (2) Insect X is a plant eater.
- (3) Insect Y has less water.
- (4) Insect Y is a meat eater.

22. A plant can start reproducing when _____.

- (1) the roots appear
- (2) the shoots appear
- (3) the leaves appear
- (4) the flowers appear

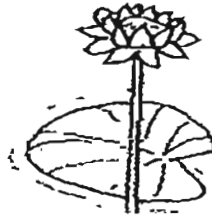
23. Which of the following cannot make its own food?



(1)



(2)



(3)



(4)

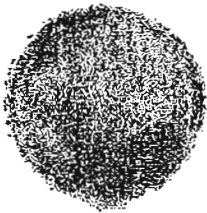
24. Alan is learning about fungi.

Group A	Group B	Group C
Bracket fungus	Bacteria	Mould
Algae	Toadstool	Puffball
Bird's Nest Fern	Yeast	White fungus

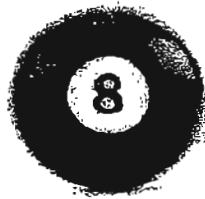
Which group or groups has he listed the living things correctly?

- (1) A only
- (2) B only
- (3) C only
- (4) A, B and C

25. Jimmy was given 3 balls made of different materials but of the same size. He was asked to arrange the balls according to their masses, from the least to the greatest.



A
Plastic ball



B
Iron ball



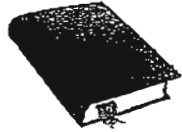
C
Rubber ball

Which one of his arrangements is correct?

- (1) A, C and B
- (2) B, C and A
- (3) B, A and C
- (4) C, B and A

26. Which one of the following is made from things that were once alive?

(1)



book

(2)



Plastic chair

(3)



Light Bulb

(4)



Metal fan

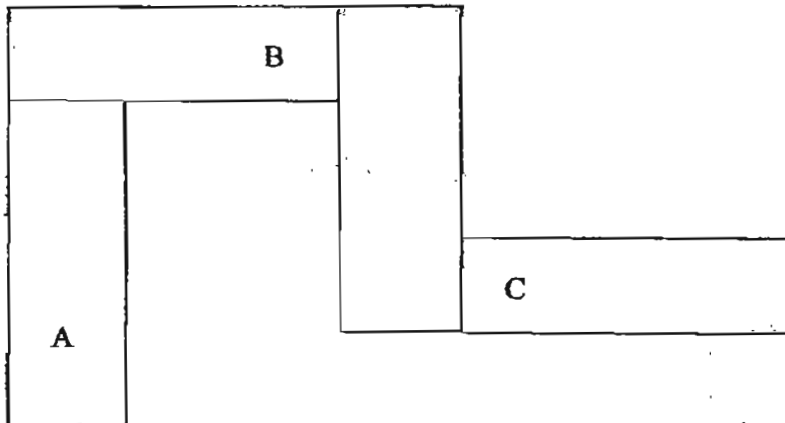
27. Which one of the following groups contains only magnetic material?

- (1) Aluminium, Copper, Iron
- (2) Gold, Nickel, Silver
- (3) Nickel, Iron, Steel
- (4) Iron, Copper, Steel

28. A freely suspended magnet will always come to rest in a _____ direction.

- (1) North-South
- (2) North- East
- (3) North- West
- (4) East-West

29. The diagram above shows a number of magnets attracted to each other. A, B and C are the poles of 3 of the magnets.

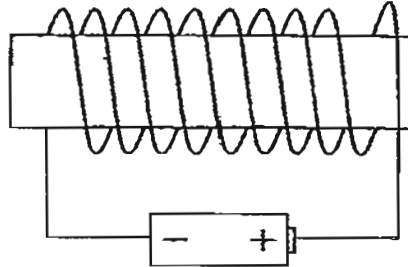


Which of these statements about the magnets is/are correct?

- A. Pole A will repel Pole B
- B. Pole A will repel Pole C
- C. Pole B and Pole C are unlike poles
- D. Pole C will attract Pole A

- (1) A only
- (2) D only
- (3) B and C only
- (4) C and D only

30. The electromagnet shown below is able to pick up 4 paper clips.



Geena wants to increase the number of paper clips picked up by the electromagnet. She should _____.

- A. use a wooden rod instead of an iron rod
- B. increase the length of wire
- C. connect another battery to the circuit
- D. coil a few more rounds of wire around the iron rod

- 1. C only
- 2. A and B only
- 3. B and C only
- 4. C and D only

Name: _____ ()
 Class P4 ()

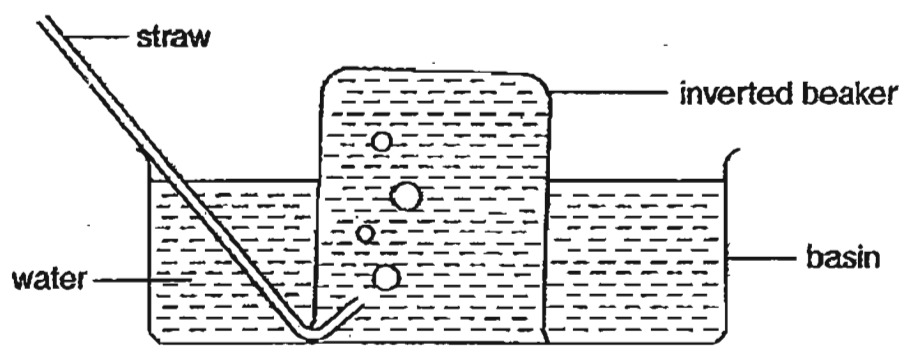
Section B: 40 marks

Read the questions carefully and write down your answers in the spaces provided.

31. Write 'True' or 'False' against each statement in the table. [2]

Statement	True / False
Water has no definite shape but has a definite volume.	
Plasticine is not a solid because the shape can change.	
Oil has no definite shape and no definite volume.	
Air has no mass and volume.	

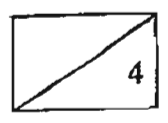
32.



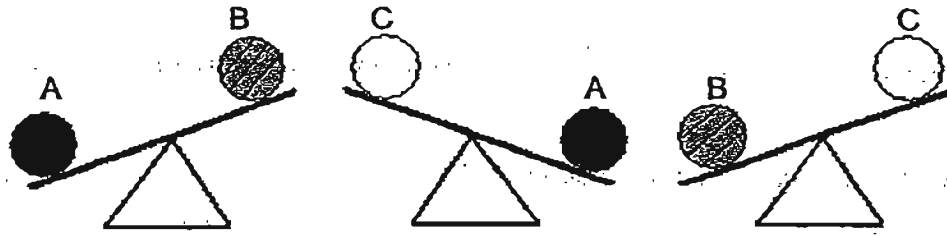
Vincent set up an experiment as shown above. He blew through the straw and bubbles were seen in the beaker of water.

a) What will he notice about the water level in the inverted beaker after blowing continuously for 1 minute? [1]

b) What does this experiment tells us about the property of air? [1]



33. June weighed three similar sized balls on a balance scale.



(a) Arrange the balls in order from the lightest to the heaviest.

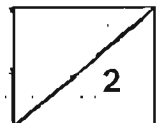
[1]

--	--	--

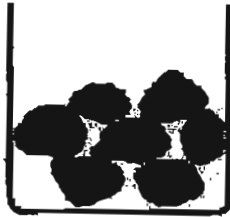
(b) The balls are made of different materials: wood, rubber and wool.
Which ball A, B or C is made of wool?

[1]

Ball _____



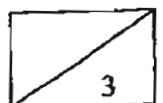
34. Kumar filled a 1-litre beaker with 480cm^3 of stones as shown below.



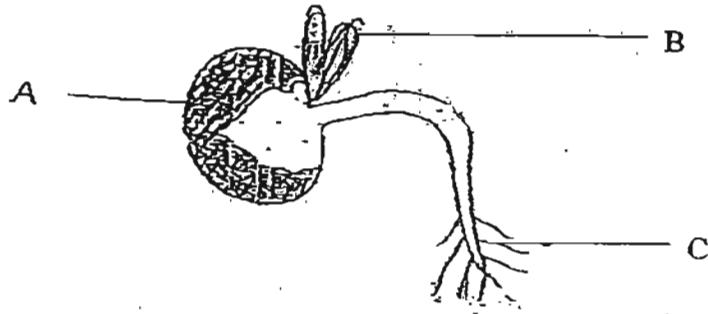
(a) How much water must he pour into the container to fill it to the brim? _____ cm^3 [1]

(b) If he had filled the container to the brim with water at first, what would happen to the water if he put in the stones next? [1]

(c) Explain your answer in (b). [1]



35. The diagram below shows a young seedling.

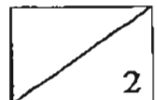


(a) Which part of the seedling protects it at this stage?

[1]

(b) What is the function of part C ?

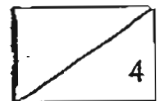
[1]



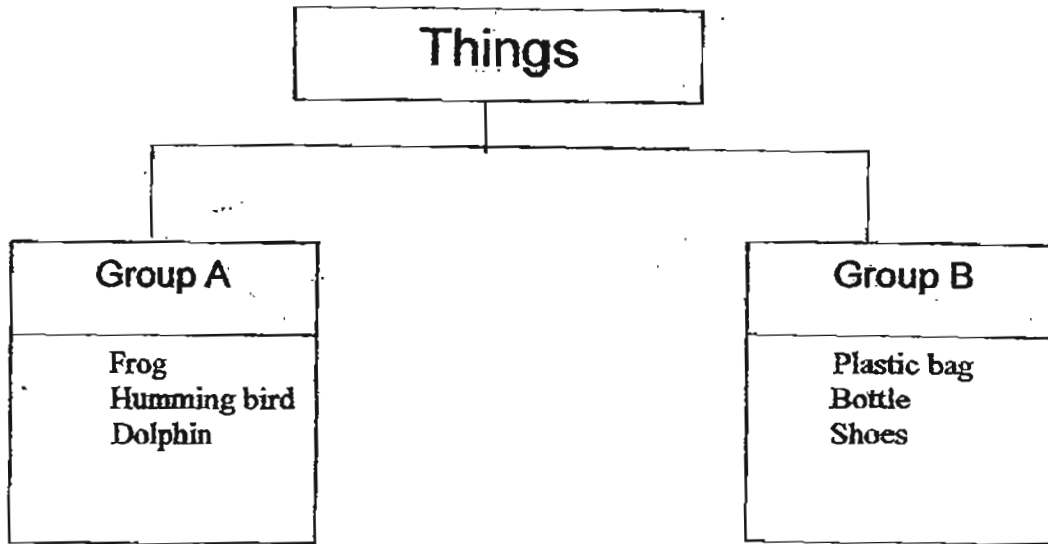
36. Complete the table below with the different plant parts given.

Potato	Tomato	Carrot	Cabbage
--------	--------	--------	---------

Leaf	Root	Stem	Fruit



37. The classification chart below shows 2 groups of things.



(a) State two differences between Group A and B.

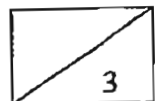
[2]

1. _____

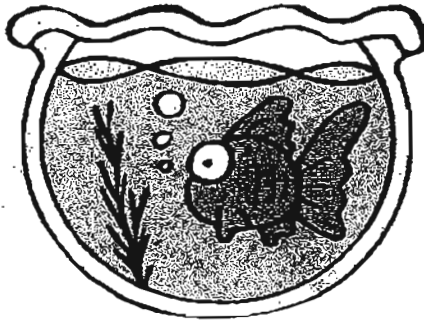
2. _____

(b) Give another example that can be placed in Group B

[1]

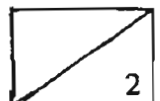


38.



- (a) When Peter tried to catch the goldfish with his hands, it swam away quickly. Which characteristic of living things was the goldfish exhibiting? [1]

- (b) Peter noticed that the goldfish was swimming close to the surface of the water. Give one reason why the fish was swimming close to the surface. [1]



39. Look at the 2 animals shown below. Then answer the following questions.



Animal A



Animal B

(a) Name the body covering that the 2 animals have.

[1]

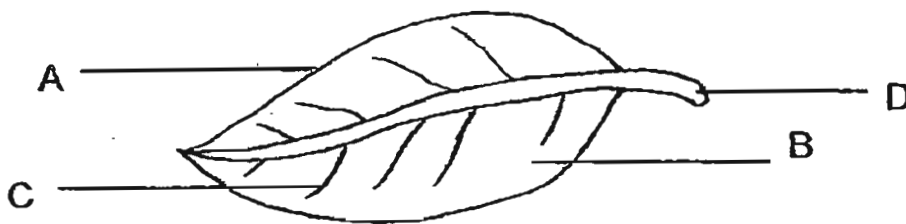
(b) Give two similarities between the 2 animals

[2]

1. _____

2. _____

40. The following picture shows the parts of a leaf.



Name the following parts of a leaf.

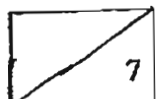
[4]

A. _____

B. _____

C. _____

D. _____



41. Mohan has the following items:

- 1) Some beans
- 2) 2 pieces of cotton wool
- 3) 1 beaker of water
- 4) 2 plastic trays

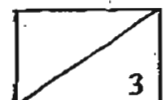
Mohan suggests that beans need water to germinate. He decides to carry out an experiment to find out if the presence of water has an effect on germination.

(a) Using the items Mohan has, describe briefly how he should carry out his experiment in 2 steps. [2]

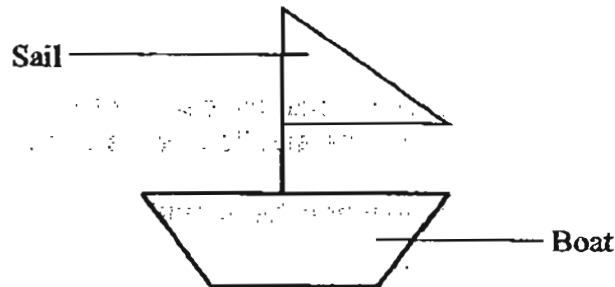
Step 1: _____

Step 2: _____

(b) What would Mohan observe after 1 week? [1]



42. Nathan wants to make a toy sailboat. The toy sailboat will move when he uses a fan to blow at it. He decides that he will need a material to create the sail and another material to create the boat.



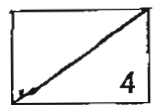
(a) Write down one material that he can use for each part of the sailboat. [2]

Sail: _____

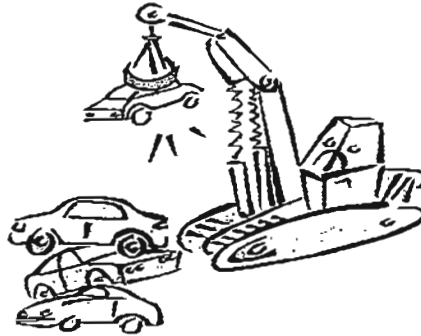
Boat: _____

(b) State 1 reason for choosing the above material to make the sail. [1]

(c) Describe 1 change that Nathan can make to the sailboat to make it move faster. [1]



43. The picture below shows a crane using magnetic force to lift some cars in a wreck yard:



(a) What is the name of the magnet used in carrying out the task? [1]

(b) Give two examples of household appliances which use the above magnet. [2]

44. Ali tested the strength of different parts of a bar magnet by putting some steel paper clips near each part of the magnet. He recorded the findings in the table below.

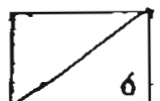
--	--

Part of the magnet	Number of paper clips attracted
X	7
Y	9
Z	4

(a) Which part represents the pole of the magnet? [1]

(b) Explain your answer to part (a). [2]

End Of Paper



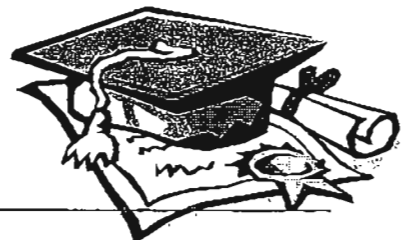


ANSWER SHEET

EXAM PAPER 2011

**SCHOOL : AITONG PRIMARY
SUBJECT : PRIMARY 4 SCIENCE**

TERM : CA1



Q1	Q2	Q3	Q4	Q5	Q6	Q7	Q8	Q9	Q10	Q11	Q12	Q13	Q14	Q15	Q16	Q17
3	3	1	4	3	2	4	4	2	2	1	4	3	1	2	1	1

Q18	Q19	Q20	Q21	Q22	Q23	Q24	Q25	Q26	Q27	Q28	Q29	Q30
4	2	3	1	4	2	3	1	1	3	1	3	4

31)T, F, F, F

32)a)The water level will decrease.
b)Air takes up space.

33)a)C,B,A
b)C

34)a)The water will overflow.
b)The rocks will take up space in the water.

35)a)Part A protects it at this stage.
b)Part C takes in water and minerals from the soil.

36)Cabbage Carrot Potato Tomato

37)a)1)Group A are living things but Group B are non-living things.
2)Group A can respond to changes but Group B cannot.
b)A table.

38)a)It responds to changes.
b)The goldfish needed to take in oxygen as those in the tank were not enough.

39)a)Feathers
b)1)They both have a beak. 2)They both lay eggs.

40)A: leaf edge B: leaf blade C: leaf vein D: leaf stalk

41)a)1)Wet one piece of cotton wool.

2)Put an number of beans in each piece of cotton wool on each on the tray.

b)Mohan should observe that the beans on the wet piece of cotton wool have germinated. The beans on the piece of cotton wool did not.

42)a)Sail: Paper Boat: Wool

b)It does not allow air to pass through.

c)Put in two paper sails instead of one.

43)a)An electromagnet.

b)television and microware.

44)a)Part Y.

b)The poles can attract the most paper clips because it has the most powerful magnetism.