



Rulang Primary School

SEMESTRAL ASSESSMENT 1 SCIENCE 2018

Name: _____ () Marks: _____ / 50

Level: Primary 3

Total Time for Booklets

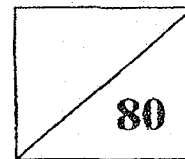
Class: Primary 3 ()

A and B: 1 h 15 min

Setter: Ms Lock Pui Lai

Date: 8 May 2018

Total Marks:



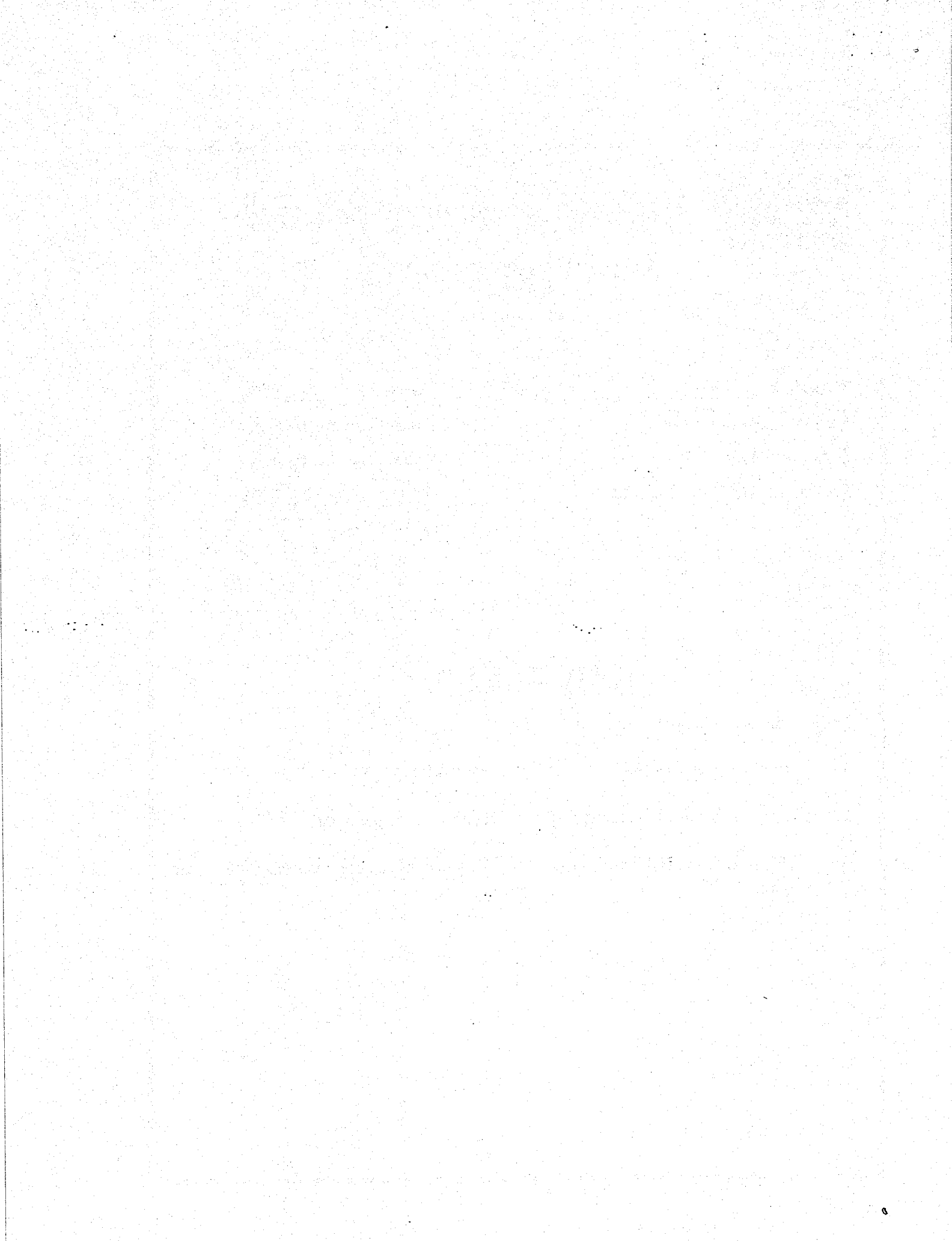
BOOKLET A

Instructions to pupils:

1. Do not open this booklet until you are told to do so.
2. You are required to answer all the questions in this booklet.
3. This question booklet consists of

15




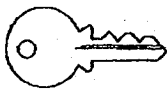

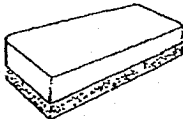


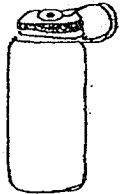
 printed pages, including the cover page.



Section A (25 x 2 marks)

For each of the questions from 1 to 25, four options are given. One of them is the correct answer. **Make your choice (1, 2, 3 or 4) and shade the answers in the Optical Answer Sheet (OAS) provided.**

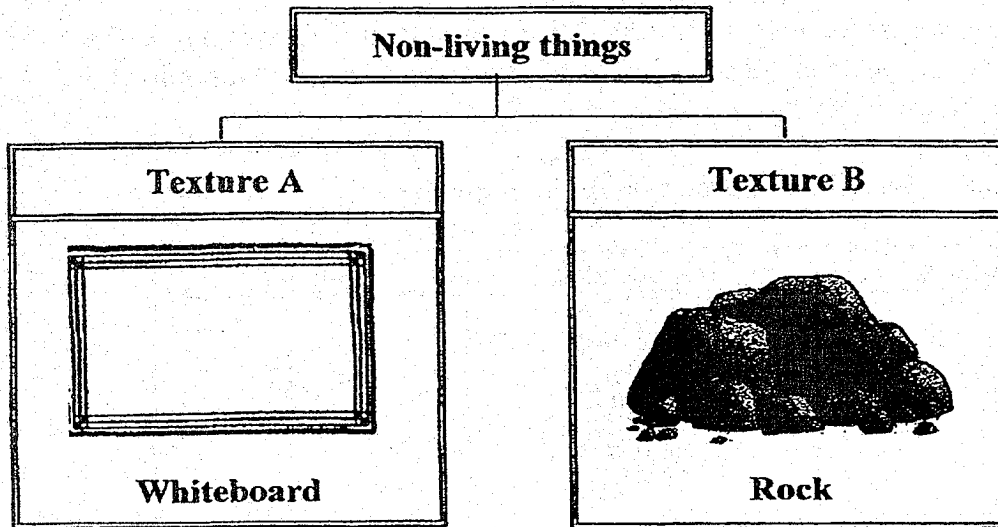
1. John arranged the following items based on their shapes.

Group A	Group B	Group C
 Pen	 File	 Eraser
 Key	 White paper	 Duster
 Pencil	 Magazine	 Water bottle

Which one of the following sets of items has been grouped incorrectly?

- (1) File and eraser only
- (2) Pen and duster only
- (3) Magazine and pencil only
- (4) Key and water bottle only

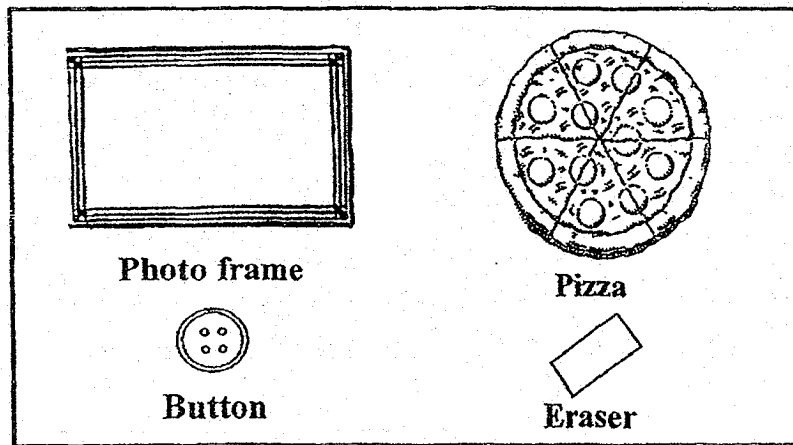
2. Study the classification chart below carefully.



Which one of the following sets of things is classified correctly?

	Texture A	Texture B
(1)	Carpet	Steel ball
(2)	Brick	Chopping board
(3)	Mirror	Sandpaper
(4)	Laptop	Silk handkerchief

3. Esther classified the following items into two groups, A and B.

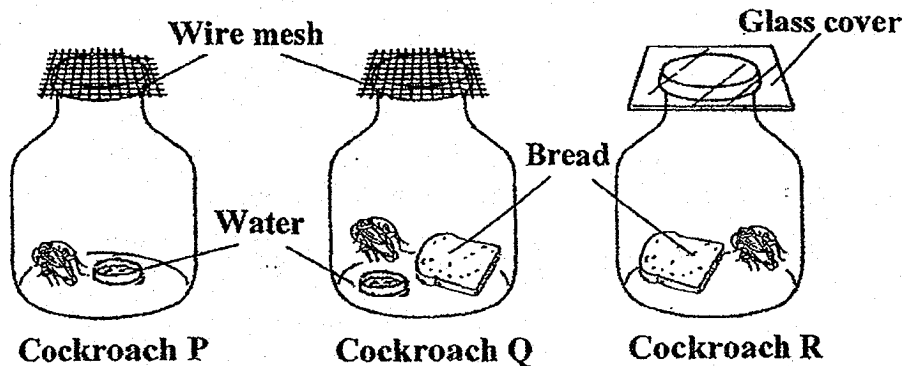


She could classify the above objects based on their _____.

- A: size
- B: taste
- C: shape
- D: pattern

- (1) B only
- (2) A and C only
- (3) C and D only
- (4) A, B and D only

4. The set-ups below show cockroaches P, Q and R in 3 jars under different conditions.



Arrange the cockroaches, P, Q and R, in order, starting with the one that would live for the shortest period.

- (1) P, Q, R
- (2) Q, P, R
- (3) R, Q, P
- (4) R, P, Q

5. Naomi observed four things, A, B, C and D, and recorded their characteristics in the table below.

Thing	Has wings	Can grow	Can reproduce	Can move from place to place
A	Yes	Yes	Yes	Yes
B	Yes	No	No	Yes
C	No	No	No	Yes
D	No	Yes	Yes	Yes

Based on the information in the table above, which one of the following sets of things matches the letters correctly?

	A	B	C	D
(1)	Peacock	Car	Fan	Giraffe
(2)	Car	Aeroplane	Giraffe	Fan
(3)	Peacock	Aeroplane	Car	Giraffe
(4)	Aeroplane	Peacock	Fan	Car

6. Which of the following statements show the characteristics of living things?

A: An MRT train moving from one station to another.

B: A litter of kittens turning into adult cats after a few years.

C: A sponge expanding and growing in size after soaking up water.

D: A young plant dying after being kept in a dark room for a few weeks.

(1) A and B only

(2) A and C only

(3) B and D only

(4) C and D only

7. Ruby recorded the number of guppies and the number of pebbles found in her fish tank over a period of 6 months in the table below.

Number of months	Number of guppies	Number of pebbles
1	5	20
3	20	20
6	40	20

What can she conclude from the information in the table above?

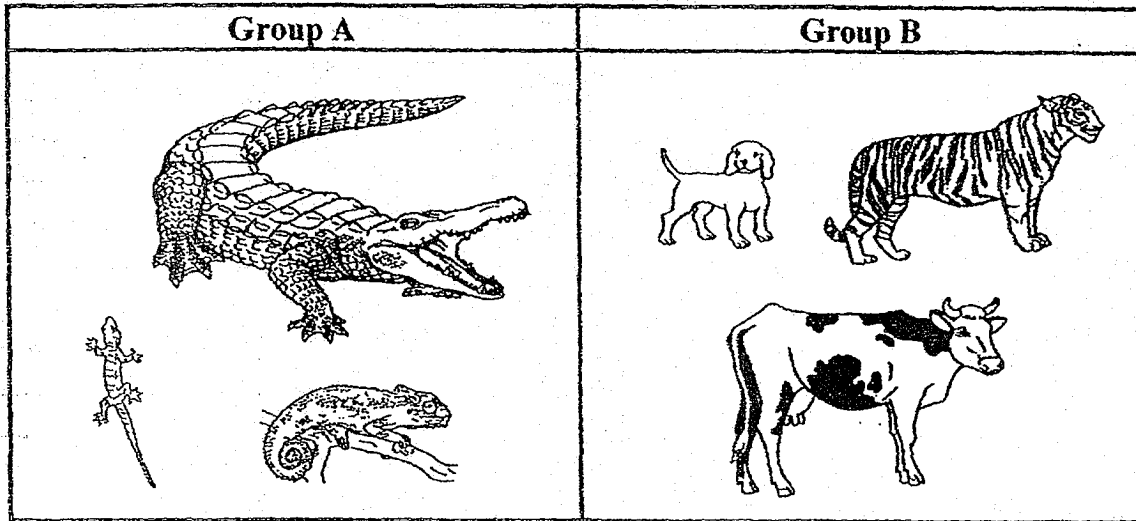
(1) Living things can grow but non-living things cannot grow.

(2) Living things can reproduce but non-living things cannot reproduce.

(3) Living things need sunlight but non-living things do not need sunlight.

(4) Living things respond to changes around them but non-living things cannot respond to changes around them.

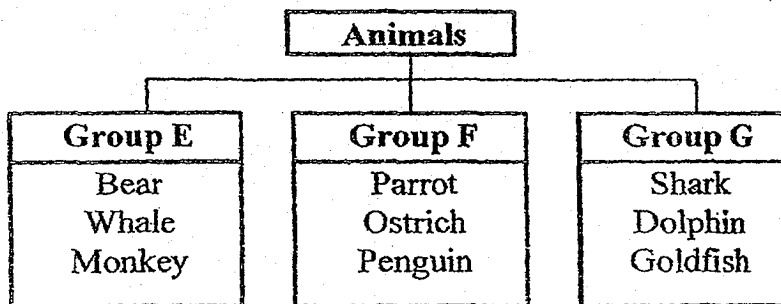
8. Study the pictures below carefully.



The animals in groups A and B are classified according to _____.

- (1) their sizes
- (2) their colours
- (3) their body shapes
- (4) the type of food they eat

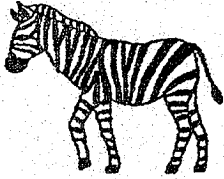





9. Study the classification chart below.



Which one of the following animals is classified incorrectly based on their outer body coverings?

- (1) Whale
- (2) Dolphin
- (3) Penguin
- (4) Goldfish

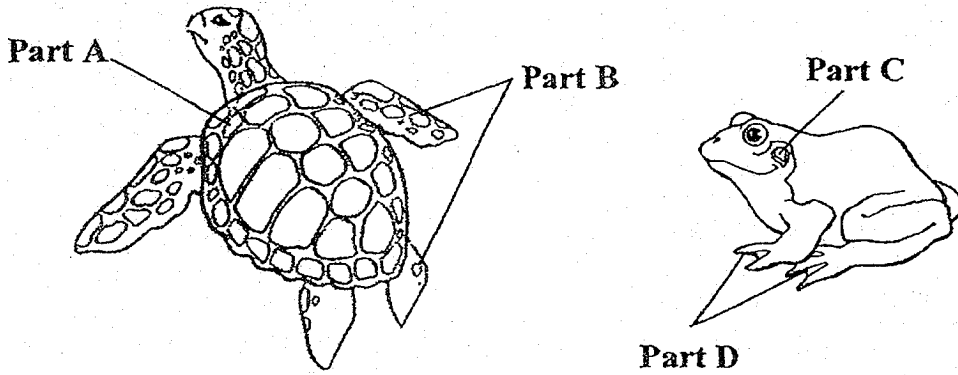
10. The animals below are grouped according to the type of food they eat.

Group X	Group Y	Group Z
		
<p>Zebra</p>	<p>Wolf</p>	<p>Chicken</p>
		
<p>Deer</p>	<p>Eagle</p>	<p>Rat</p>

Which one of the following sets of animals is grouped correctly?

	Group X	Group Y	Group Z
(1)	Sheep	Leopard	Pig
(2)	Elephant	Pig	Sheep
(3)	Horse	Snake	Leopard
(4)	Pig	Horse	Snake

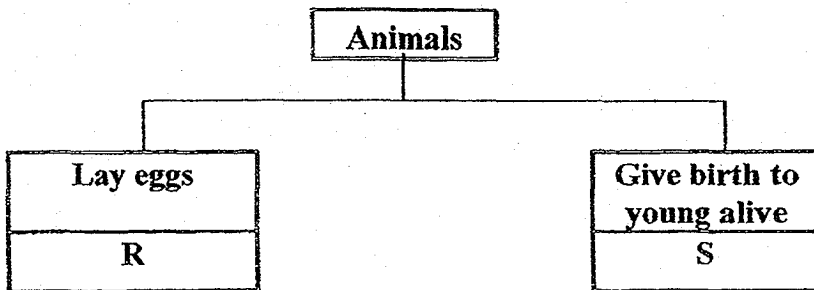
11. The animals shown in the diagrams below can live on land and in water.



Which part of the body help the animals above to move around in the water?

- (1) A and C only
- (2) A and D only
- (3) B and C only
- (4) B and D only

12. Study the classification chart below carefully.



Which one of the following sets of animals matches the letters correctly?

	R	S
(1)	Ant	Butterfly
(2)	Guppy	Cheetah
(3)	Mosquito	Cockroach
(4)	Turtle	Camel

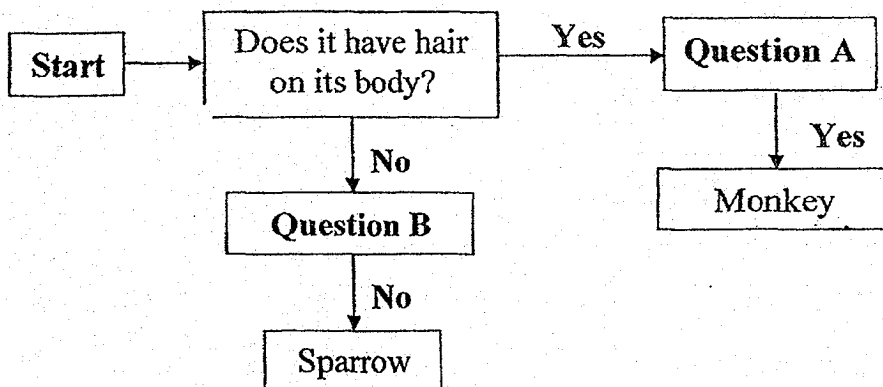
13. Study the classification table below carefully.

Group X	Group Y	Group Z
Lizard	Lion	Frog
Snake	Cat	Toad
Crocodile	Cow	Newt

Which one of the following sets best represents the headings for groups X, Y and Z?

	Group X	Group Y	Group Z
(1)	Reptiles	Fish	Amphibians
(2)	Amphibians	Fish	Reptiles
(3)	Reptiles	Mammals	Amphibians
(4)	Amphibians	Mammals	Reptiles

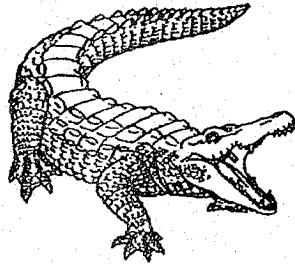
14. Study the flowchart below carefully.



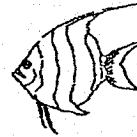
Which one of the following sets best represents questions A and B?

	A	B
(1)	Does it give birth to its young alive?	Does it have scales as its outer body covering?
(2)	Does it have scales as its outer body covering?	Does it have moist skin?
(3)	Does it live in the water?	Does it give birth to its young alive?
(4)	Does it have moist skin?	Does it live on land?

15. Study the diagrams below carefully.



Crocodile



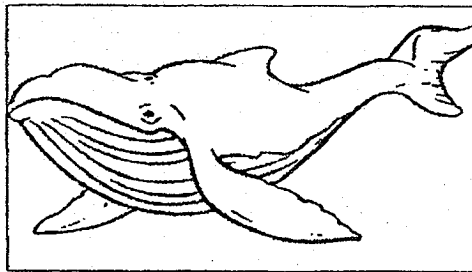
Angelfish

Which of the following statements correctly shows the similarities between a crocodile and an angelfish?

- A: They can swim.
- B: They have fins and a tail each.
- C: They give birth to their young alive.
- D: They have scales as outer body coverings.

- (1) A and D only
- (2) B and C only
- (3) A, C and D only
- (4) A, B, C and D

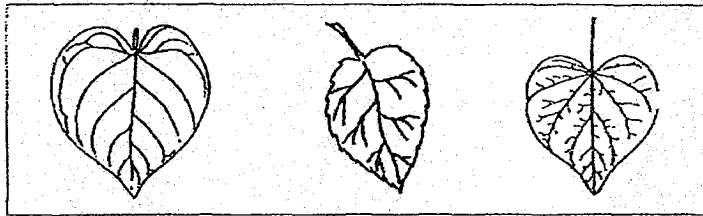
16. The diagram below shows animal W.



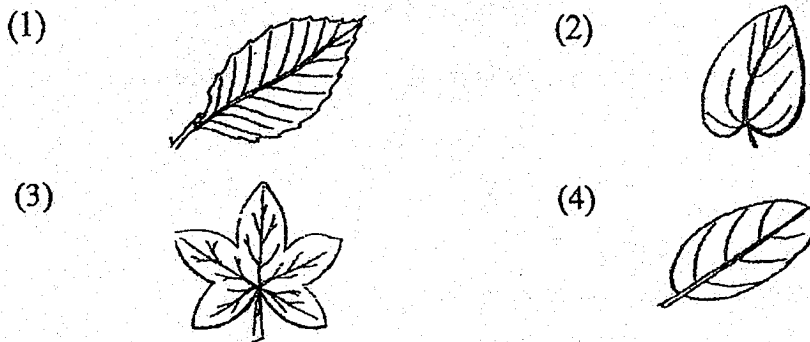
Which one of the following best represents the characteristics of animal W?

	Has gills	Lives in water	Gives birth to its young alive	Has scales as outer body covering
(1)		✓		✓
(2)		✓	✓	
(3)	✓			✓
(4)	✓	✓	✓	

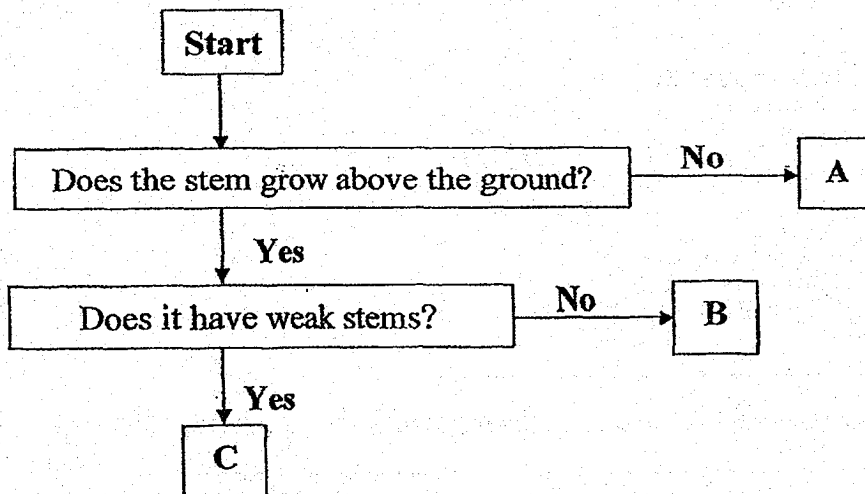
17. Study the three leaves below carefully.



Which one of the following leaves could Tim classify with the leaves above?



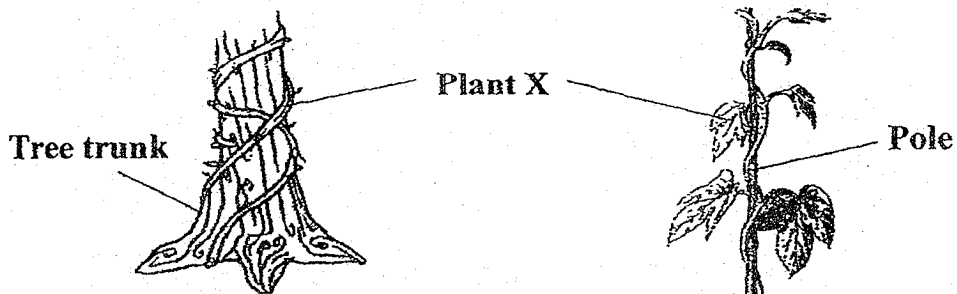
18. Study the flowchart below carefully.



Which one of the following sets best represents plants A, B and C?

	A	B	C
(1)	Onion	Sunflower	Money plant
(2)	Sunflower	Money plant	Onion
(3)	Sunflower	Onion	Money plant
(4)	Money plant	Sunflower	Onion

19. The diagram below shows plant X which can be found growing on tree trunks and poles.

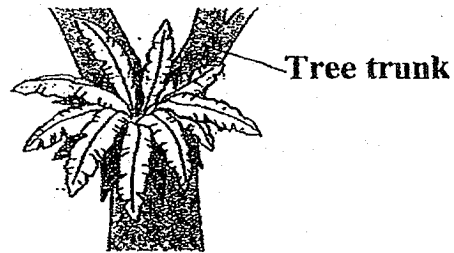


Which one of the following parts of plant X helps it to climb up the tree trunks and poles to get more sunlight?

- (1) Root
 - (2) Leaf
 - (3) Stem
 - (4) Flower
20. Abel, Bethany, Cain and David made the following statements about the two plants shown below.



Plant A



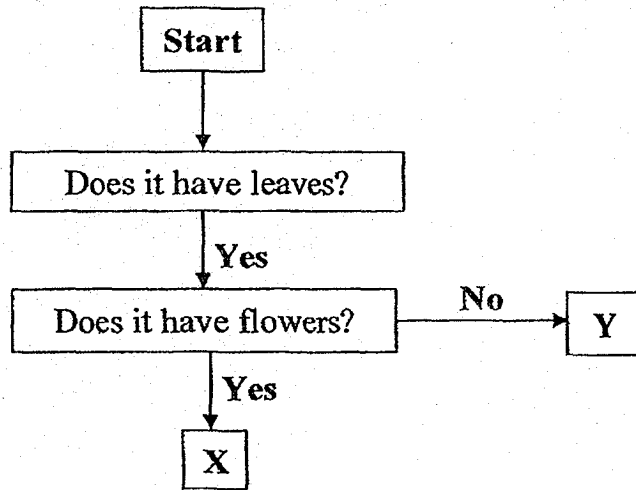
Plant B

Pupil	Statement
Abel	Only plant A is a flowering plant.
Bethany	Both plants A and B reproduce by spores.
Cain	Plant A bears fruits while plant B bears flowers.
David	Plant B can bear flowers but it is not time for it to do so.

Who made the correct statements?

- (1) Abel only
- (2) Abel and Cain only
- (3) Cain and David only
- (4) Bethany and David only

21. Study the flowchart below carefully.



The diagrams below show three different organisms.



Mushroom



Carnation

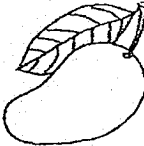

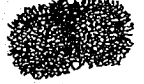



Fern

Which one of the following sets best represents X and Y respectively?

	X	Y
(1)	Fern	Carnation
(2)	Carnation	Mushroom
(3)	Carnation	Fern
(4)	Mushroom	Fern

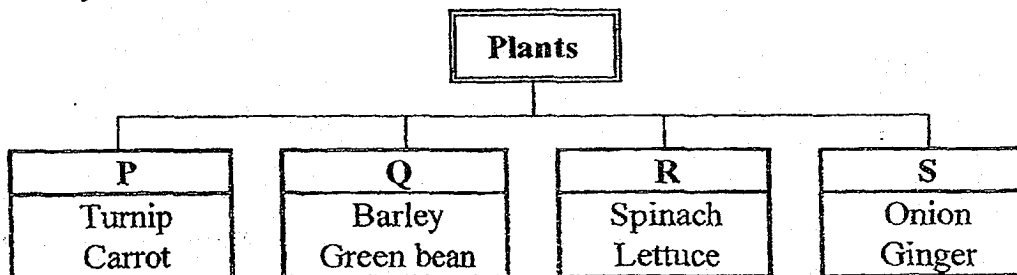
22. The table below shows two groups of fruits, X and Y.

Group X	Group Y
 Mango	 Apple
 Rambutan	 Papaya

Which one of the following sets best represents groups X and Y?

	Group X	Group Y
(1)	Smooth skin	Rough skin
(2)	Small in size	Large in size
(3)	Grow singly	Grow in clusters
(4)	One seed	More than one seed

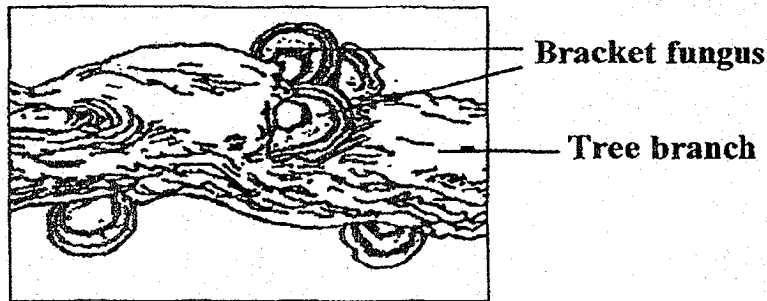
23. James classified the plants below according to the parts of the plant that we usually eat.



Which one of the following sets best represents the headings for groups P, Q, R and S?

	P	Q	R	S
(1)	Root	Fruit	Seed	Stem
(2)	Stem	Fruit	Leaf	Root
(3)	Fruit	Seed	Stem	Root
(4)	Root	Seed	Leaf	Stem

24. Study the diagram below carefully.



Which one of the following statements about bracket fungus is not correct?

- (1) It makes its own food.
- (2) It does not bear flowers.
- (3) It grows on another plant.
- (4) It reproduces from spores.

25. Three pupils wrote the following statements about bacteria.

Pupils	Observations
Micah	All bacteria cause diseases and sicknesses.
Rachel	Bacteria need air, food and water to stay alive.
Benjamin	Some bacteria can be seen with our naked eyes.

Whose statements are incorrect?

- (1) Micah and Rachel only
- (2) Micah and Benjamin only
- (3) Rachel and Benjamin only
- (4) Micah, Rachel and Benjamin



Rulang Primary School

SEMESTRAL ASSESSMENT 1
SCIENCE
2018

Name: _____ () Marks: _____ / 30

Level: Primary 3

Date: 8 May 2018

Class: Primary 3 ()

Parent's
Signature: _____

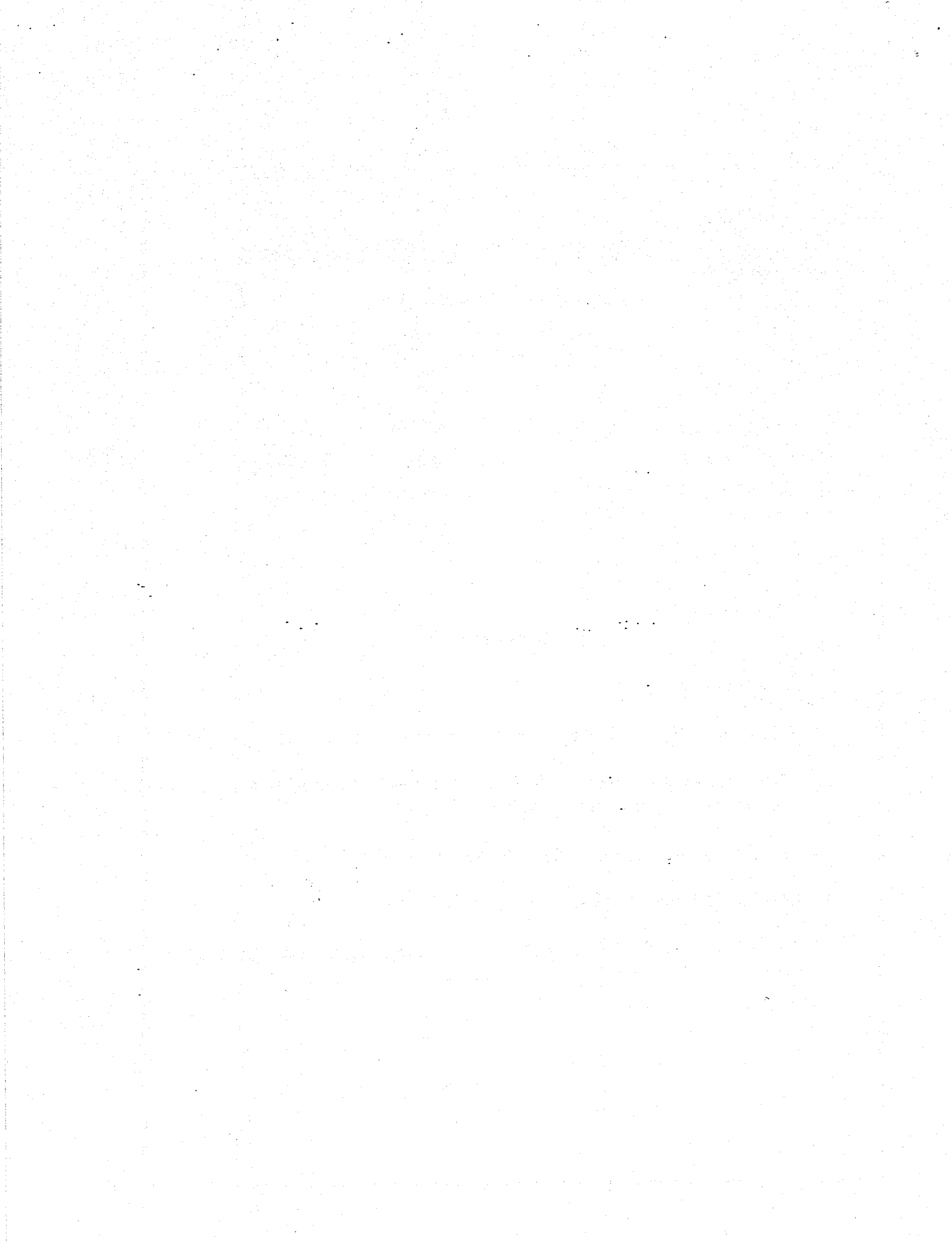
BOOKLET B

Instructions to pupils:

1. Do not open this booklet until you are told to do so.
2. You are required to answer **all** the questions in this paper using your own words / expressions as far as possible.
3. All drawings / diagrams must be clearly shown and labelled.
4. Marks will be deducted for wrongly spelt key words.
5. This question booklet consists of

10

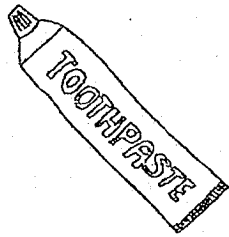
 printed pages, including the cover page.



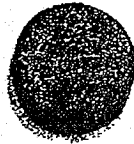
Section B: (30 marks)

Write your answers to questions 26 to 35 in this booklet.

26. Study the things below carefully.



Toothpaste



Biscuit

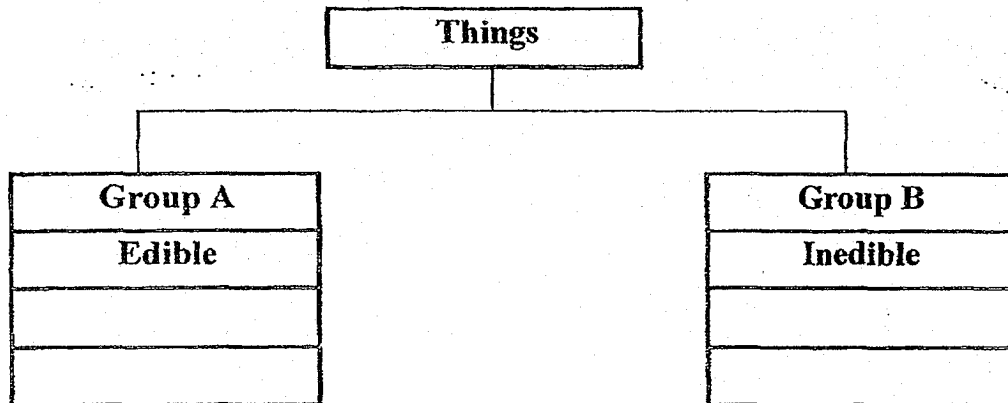


Milk



Cup

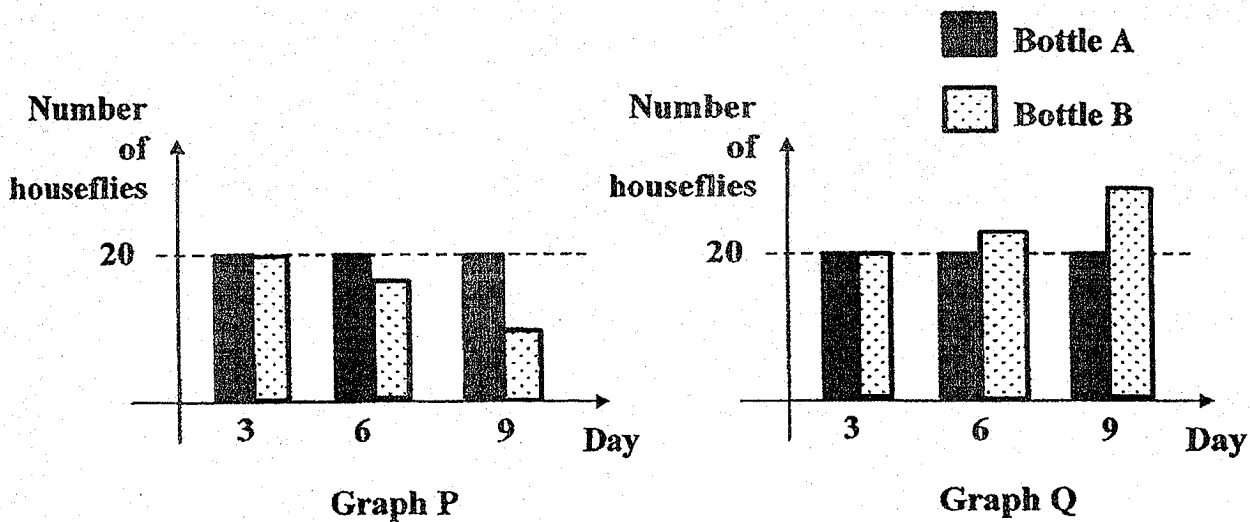
(a) Classify the things in the chart below using the headings given. There should be two items in each group. (2 m)



(b) In which group, A or B, would you place carrot? (1 m)

Group _____

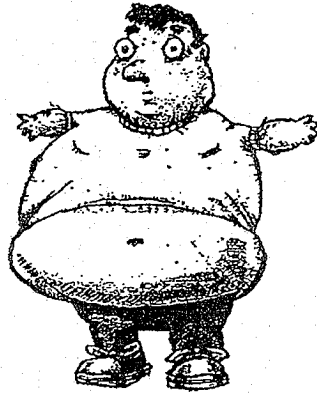
27. Jeremiah placed 20 houseflies in each of the two bottles, A and B. He covered bottle A with wire mesh but sealed bottle B completely. He left a piece of meat and some water in bottle A only.



(a) Which graph, P or Q, above best represents the number of houseflies alive after 9 days? Explain your answer clearly. (2 m)

(b) After a few weeks, the number of houseflies in one bottle increased. Which bottle was it and which characteristic of living things does this show? (2 m)

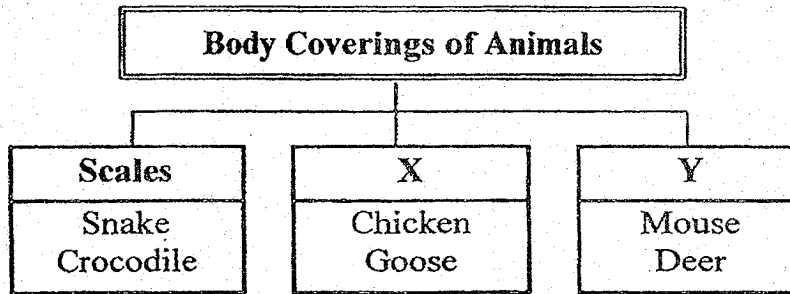
28. Tom could not fit into the shirt he bought two years ago. Tom told his mother that the school uniform had decreased in size.



(a) His mother said that the shirt did not change in size. Do you agree with his mother? Give a reason for your answer. (2 m)

(b) Which characteristic of living things did Tom show when he could no longer fit into the shirt he bought two years ago? (1 m)

29. The classification chart below shows some animals grouped according to their outer body covering.



- (a) State the outer coverings of the animals in groups X and Y. (1 m)

Group X: _____

Group Y: _____

- (b) State a similarity between the animals with scales and the animals in group X in terms of how they reproduce. (1 m)

- (c) Animal R cannot be placed in the classification chart above as it has moist skin. It can live on land and in water. Which group of animals does animal R most likely belong to? (1 m)

30. Classify the following animals according to what they eat. (2 m)

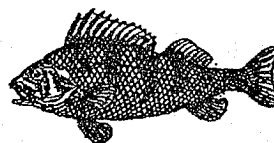
Cheetah	Mouse	Elephant	Goat
---------	-------	----------	------

Animals that eat plants only	Animals that eat other animals only	Animals that eat plants and other animals

31. Study the animals below.



Animal C



Animal D



Write down the names of the animal groups which C and D belong to and how they reproduce. (2 m)

Animal	Group	How they reproduce
C		
D		

32. Elijah observed the characteristics of animals A, B and C and recorded his observations in the table below.

Characteristic	Animal A	Animal B	Animal C
Can fly	✓		✓
Have feathers		✓	✓
Give birth to young alive	✓		

(a) Based on the table above, use letters A, B or C to identify the following animals. (2 m)

		Animal
(i)		
(ii)		

(b) Based on the table above, write down one similarity between animals A and C. (1 m)

(c) Based on the table above, write down one difference between animals B and C. (1 m)

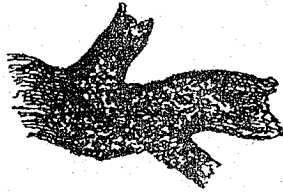
33. Study the plants below carefully.



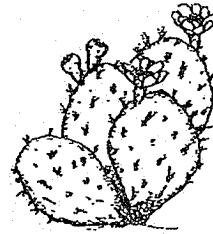
Fern



Lily



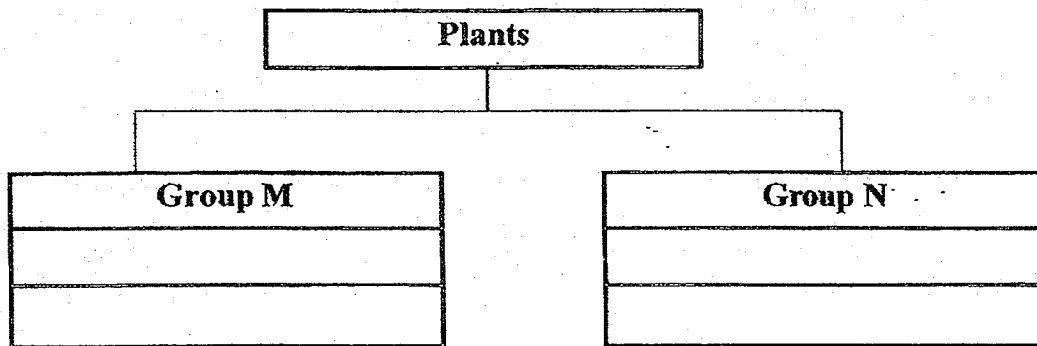
Moss



Cactus

(a) Classify the plants above accordingly.

(1 m)



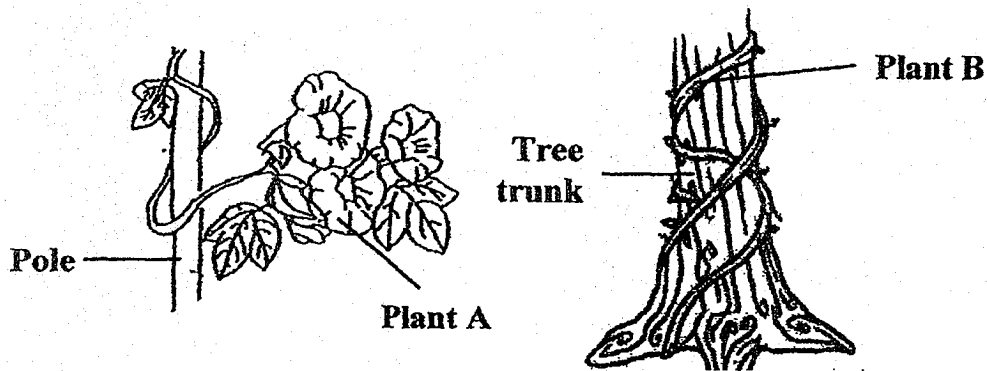
(b) Write down suitable headings for group M and group N.

(1 m)

Group M: _____

Group N: _____

34. Study the diagrams of plants A and B below carefully.



(a) State a similarity between plants A and B in terms of their stems. (1 m)

(b) Explain clearly why the stems of both plant A and plant B need to grow around a support. (2 m)

35. An experiment was conducted using two pieces of biscuits. They were placed on a table in the same room. Biscuit A was blown dried with a hair dryer. Biscuit B was sprinkled with water. Observations of the two biscuits during the 6 days were recorded in the table below.

Day	Biscuit A	Biscuit B
2	No change	No change
4	No change	A few dark spots
6	No change	More dark spots

- (a) Based on the observation above, which biscuit, A or B, would have more bacteria growing on it? Explain your answer clearly. (2 m)

- (b) State one use of bacteria. (1 m)

- (c) Write down how bacteria can harm our body. (1 m)

END OF PAPER

EXAM PAPER 2018 (P3)

SCHOOL : RULANG

SUBJECT : SCIENCE

TERM : SA1

Q1	Q2	Q3	Q4	Q5	Q6	Q7	Q8	Q9	Q10
4	3	2	4	3	3	2	3	2	1
Q11	Q12	Q13	Q14	Q15	Q16	Q17	Q18	Q19	Q20
4	4	3	1	1	2	2	1	3	1
Q21	Q22	Q23	Q24	Q25					
3	4	4	1	2					

Q26) a) Group A – Biscuit , Milk

Group B – Toothpaste , Cup

b) Group A

Q27) a) Group P. The number of houseflies in bottle B will decrease. The houseflies in bottle B do not have air, food and water to survive.

b) Bottle A. Living things reproduce.

Q28) a) Yes, Tom has grown. Because the shirt is a non-living thing and non-living things cannot change in size.

b) This shows that living things can grow.

Q29) a) Group X : Animals with feathers

Group Y : Animals with fur

b) The animals with scales and the animals in group X lay eggs to reproduce.

c) Animal R is most likely belong to the group of amphibians.

Q30) Animals that eat plants only – Goat , Elephant

Animals that eat other animals only – Cheetah

Animals that eat plants and other animals – Mouse

Q31) Animal C

Group – Mammals

How they reproduce – give birth to young alive

Animal D

Group – fish

How they reproduce – lay eggs

Q32) a) i) Animal A

ii) Animal B

b) Animal A and C can fly

c) Animal B cannot fly but animal C can fly.

Q33) a) Group M – Cactus , Lily

Group N – Moss , Fern

b) Group M : Flowering plants

Group N : Non-flowering plants

Q34) a) Both plant B and A have weak stems.

b) The stems of both plants grows up a pole to help the plant receive more sunlight in order for them to survive.

Q35) a) Biscuit B has moisture on it. Bacteria needs moisture to survive.

b) It is use to make medicine.

c) Bacteria can cause sickness.

