



PEI HWA PRESBYTERIAN PRIMARY SCHOOL
SEMESTRAL ASSESSMENT 1

PRIMARY 3
SCIENCE
11th May 2018

(BOOKLET A)

Name: _____ ()

Class: Primary 3 Responsibility _____

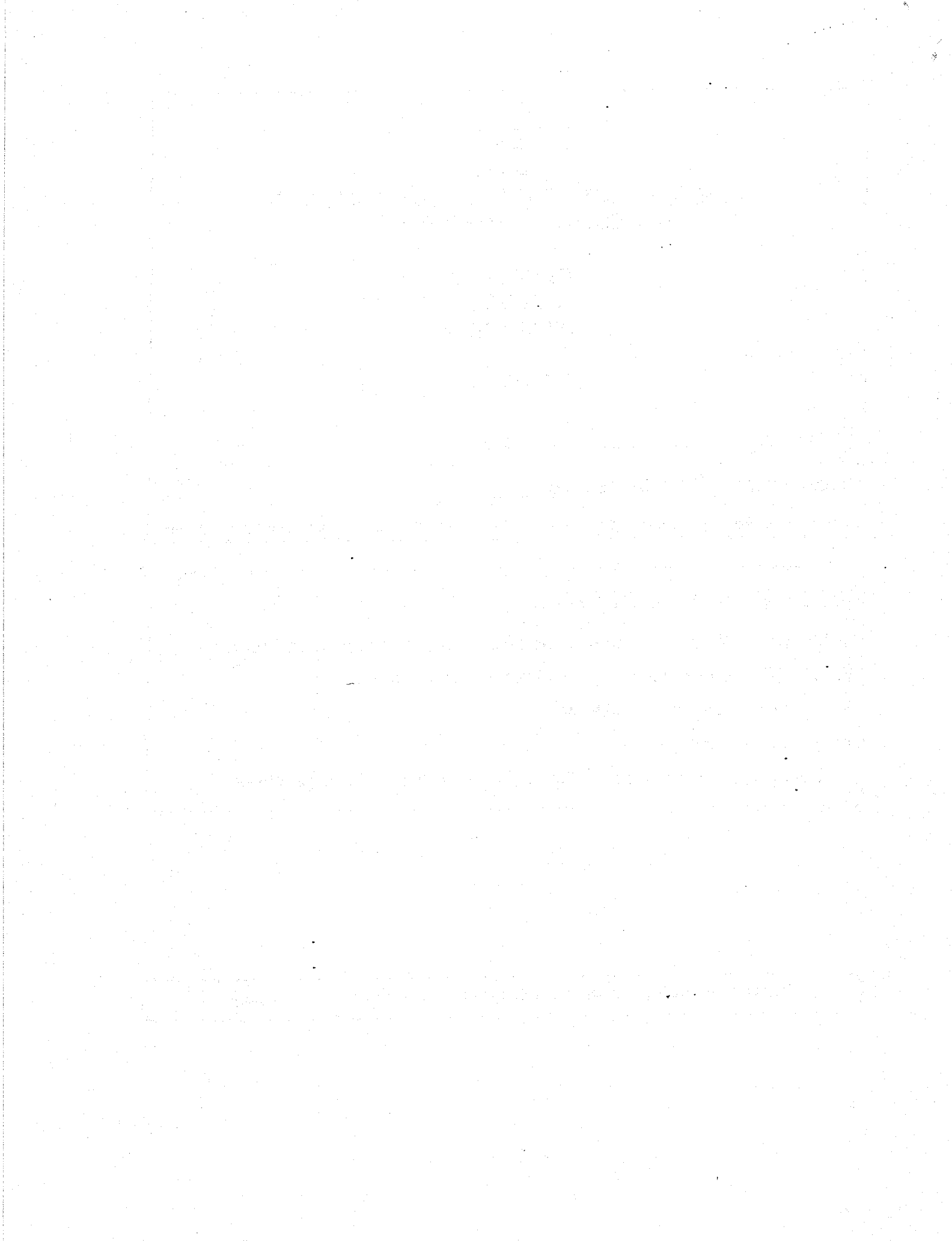
Additional Material(s): Optical Answer Sheet (OAS)

Total time for Booklets A and B: 1 h 30 mins

INSTRUCTIONS TO CANDIDATES

1. Write your Name, Class and Index No. at the spaces provided above.
2. DO NOT turn over the page until you are told to do so.
3. Follow all instructions carefully.
4. Answer all questions.
5. Shade your answers on the Optical Answer Sheet (OAS) provided.

There are a total of 6 pages in this booklet, excluding the cover page.



For each question from 1 to 15, four options are given. One of them is the correct answer. Make your choice and shade the oval (1, 2, 3 or 4) on the Optical Answer Sheet provided. (30 marks)

1 Unlike animals, plants are living things that _____.

- (1) need air
- (2) need water
- (3) can make its own food
- (4) respond to changes around them

2 Which of the following is not a characteristic of all living things?

- (1) They grow.
- (2) They can move by themselves.
- (3) They need air, food and water to survive.
- (4) They reproduce by giving birth to their young.

3 Jane left a plant in a totally dark room without taking care of it. After a week, she noticed that the plant had died. In order to prevent the plant from dying, what should Jane have given the plant?

- A air
- B food
- C water
- D sunlight

- (1) A and B only
- (2) A and C only
- (3) B and C only
- (4) C and D only

4 Which of the following living and non-living things are not grouped correctly?

	Living things	Non-living things
(1)	grass	fan
(2)	water	car
(3)	mould	stapler
(4)	mushroom	apple pie

5 The table below shows the prices of some food sold in a school canteen.

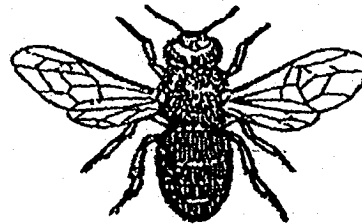
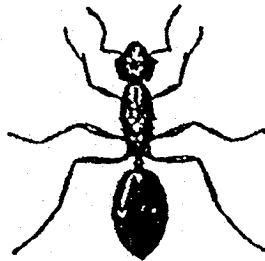
Price	\$1.00	\$1.20	\$1.50
Food	porridge fried noodle	spaghetti nasi lemak	chicken rice prawn noodle

Based on the information above, which of the following statements is/are true about the list of food?

- A The table shows that nasi lemak is the most expensive food.
- B The table shows the difference in price between spaghetti and nasi lemak.
- C The table shows the similarities and differences in price of the food.
- D The table shows the difference in price between prawn noodle and porridge.

- (1) C only
- (2) A and B only
- (3) C and D only
- (4) B, C and D only

6 Study the pictures below carefully.



Which of the following statements is correct about both insects?

- (1) They have a pair of wings.
- (2) They have two body parts.
- (3) They have a pair of feelers.
- (4) They have four pairs of legs.

7 Which of the following birds is not able to use their wings to fly?

- (1) goose
- (2) parrot
- (3) ostrich
- (4) pelican

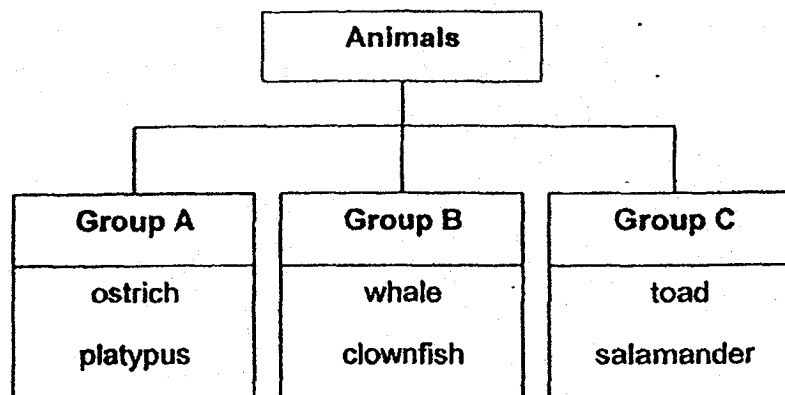
8 Study the two groups of animals shown below.

Group A	Group B
bat	frog
lion	salamander

Which of the following pairs of animals belongs to groups A and B respectively?

	Group A	Group B
(1)	shark	turtle
(2)	dolphin	toad
(3)	cat	clownfish
(4)	butterfly	rabbit

9 Study the classification chart below.



The animals are classified according to _____.

- (1) where they live
- (2) how they breathe
- (3) their body covering
- (4) the way they reproduce

10 Which tree type is most suitable for planting along the roads of Singapore to provide shade?

(1)



(2)



(3)



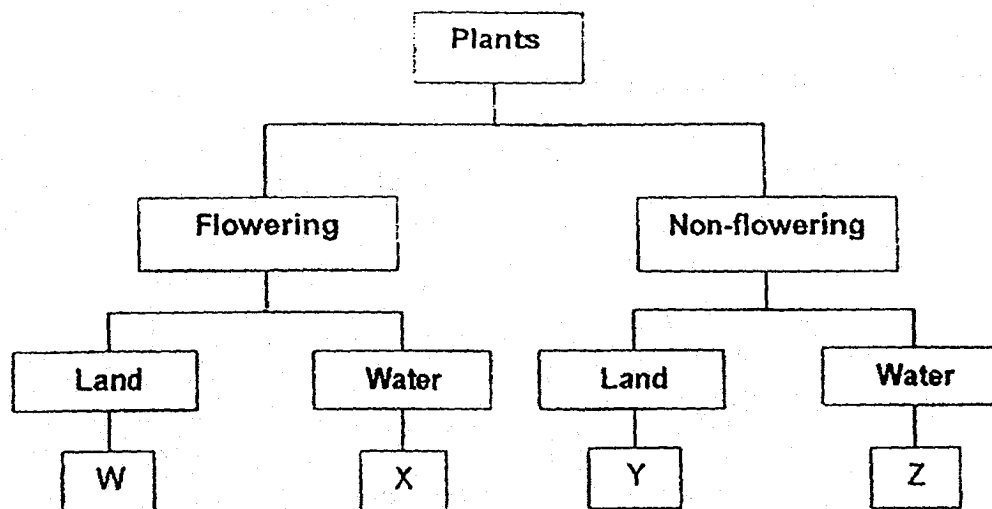
(4)



11 Joe saw a plant and described it below.

- It has flowers.
- It does not grow on land.

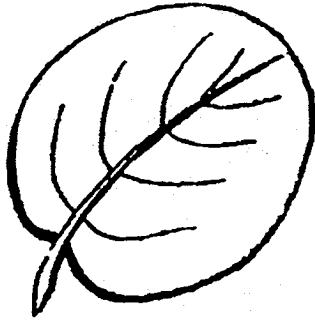
The classification chart below shows how plants can be classified.



Which letter, W, X, Y or Z, correctly represents the plant Joe saw?

- (1) W
- (2) X
- (3) Y
- (4) Z

12 Study the 2 leaves below.



Which of the following statements is correct about the leaves?

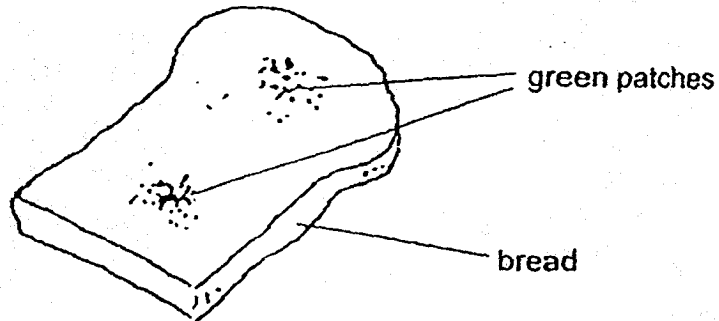
- A They have veins.
- B They have different edges.
- C They have different shapes.
- D They belong to the fungi group.

- (1) A and B only
- (2) B and C only
- (3) A, B and C only
- (4) B, C and D only

13 Which of the following statements correctly describes the similarity between the fungi and the fern?

- (1) They are plants.
- (2) They bear flowers.
- (3) They reproduce by spores.
- (4) They can make their own food.

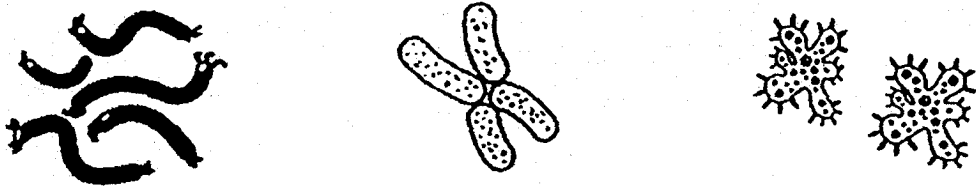
- 14 The picture below shows a piece of bread that has some green patches on it.



Which of the statements below are true about the green patches on the bread?

- A The green patches are mosses.
 - B The green patches need water to grow.
 - C The green patches are able to reproduce.
 - D The green patches are living things that get their food from the bread.
- (1) A and B only
(2) B and C only
(3) C and D only
(4) B, C and D only

- 15 The picture below shows 3 different types of bacteria.



Based only on the picture above, which statement confirms the characteristic of these bacteria?

- (1) They can cause food to spoil.
- (2) They can be found everywhere.
- (3) They can be seen without a microscope.
- (4) They come in different shapes and sizes.



PEI HWA PRESBYTERIAN PRIMARY SCHOOL
SEMESTRAL ASSESSMENT 1

PRIMARY 3
SCIENCE
11th May 2018

(BOOKLET B)

Name: _____ ()

Class: Primary 3 Responsibility _____

Parent's Signature

Total time: 1 hour 30 minutes

INSTRUCTIONS TO CANDIDATES

1. Write your Name, Class and Index No. at the spaces provided above.
2. DO NOT turn over the page until you are told to do so.
3. Follow all instructions carefully.
4. Answer all questions.
5. Write all your answers in this booklet.

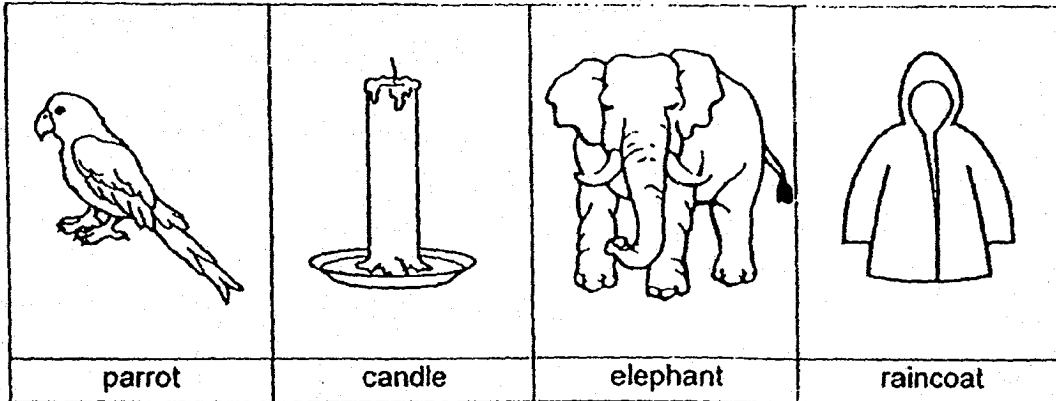
FOR TEACHER'S USE

Marks (Booklet A) :	30
Marks (Booklet B) :	20
Total Marks (Booklet A & B) :	50

There are a total of 8 pages in this booklet, excluding the cover page.

Write your answers to the questions 16 to 22 in the spaces provided.
 The number of marks available is shown in brackets [] at the end of each question or part question. (20 marks)

16 Look at the things below.



Classify all the things into 2 groups in the given table below. [2]

Can move from place to place	Cannot move from place to place

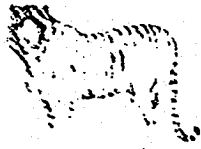
17 Each of the following sentences tells a different characteristic of living things.
 Write down the characteristic of living things that is described in each sentence.

(a) An eagle chasing after a rat. [1]

(b) An elephant giving birth. [1]

18 Study the following groups of animals

Mammals



tiger



zebra

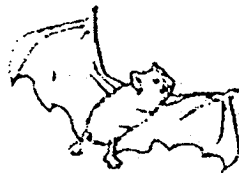


rhinoceros

Birds



eagle



bat

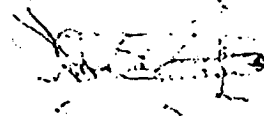


pigeon

Insects



beetle



grasshopper



housefly

(a) Which animal is not classified correctly? [1]

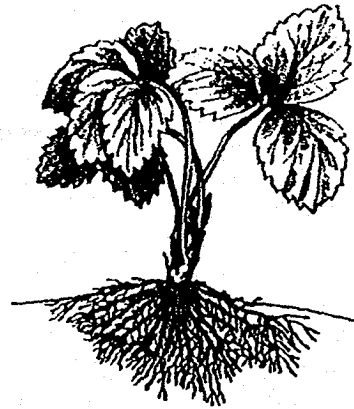
(b) Give a reason for your answer in (a). [1]

(c) Excluding the animal mentioned in part (a) which two groups (A,B or C) of animals reproduce in the same way? [1]

19 Study the plants below.



Plant R



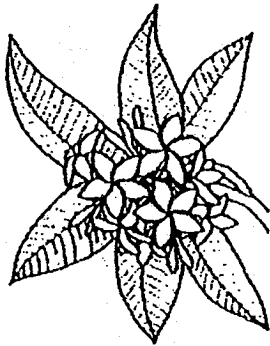
Plant S

Based on the diagrams above, state 2 similarities in the physical characteristics between Plant R and Plant S. [2]
(Do not compare their shapes, sizes and colours.)

Similarity 1: _____

Similarity 2: _____

20 James noticed the four flowers growing in a garden.



A



B

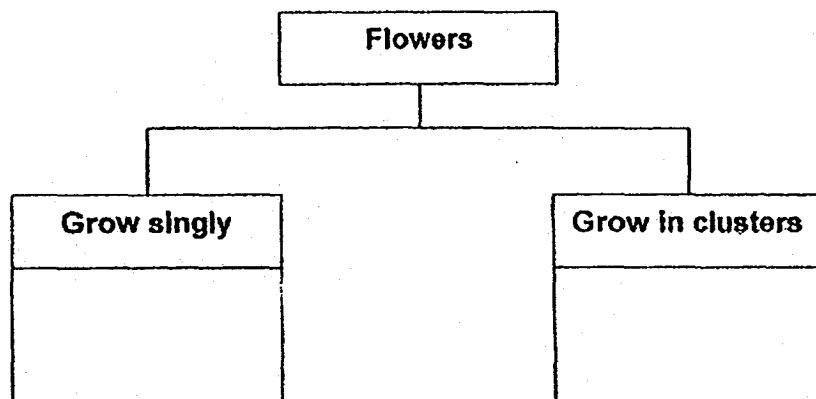


C



D

(a) Classify the above flowers, A, B, C and D, in the classification chart below. [2]



Question 20 continues on page 11

- (b) State one difference between the plants in part (a) and non-flowering plants, in the way they reproduce. [1]

- (c) State another group of living things that reproduce in the same way as non-flowering plants. [1]

- 21 William carried out an experiment with 3 different types of hand soap. He had the same number of bacteria on each plate. He then put the same amount of hand soap on each plate and counted the number of bacteria left on each plate after 10 minutes. He then recorded the results as shown in the table below.

Hand soap	Number of bacteria left on the plate after 10 minutes
X	5
Y	30
Z	17

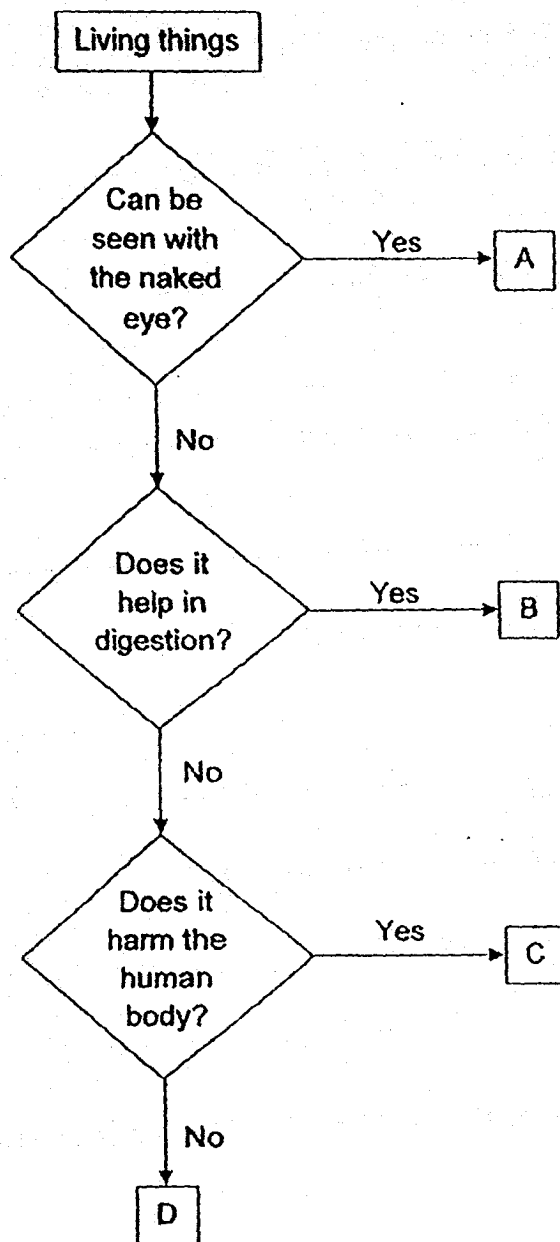
- (a) (i) Which hand soap is the best in removing as many bacteria as possible? [1]

- (ii) Give a reason for your answer in (a) (i). [1]

- (b) Why is washing our hands with hand soap important? [1]

- (c) Not all bacteria are harmful. State one way in which bacteria can be useful to humans. [1]

22 Study the flow chart below.



Question 22 continues on page 14

(a) State a similarity between living things B and C. [1]

(b) State a difference between living things C and D. [1]

(c) Which living thing, A, B, C or D, is most likely a mushroom? [1]

– END OF PAPER –



EXAM PAPER 2018 (P3)

SCHOOL : PEI HWA

SUBJECT : SCIENCE

TERM : SA1

Q1	Q2	Q3	Q4	Q5	Q6	Q7	Q8	Q9	Q10
3	4	4	2	1	3	3	2	1	2
Q11	Q12	Q13	Q14	Q15					
2	3	3	4	4					

Q16) Can move from place to place : Parrot , Elephant

Cannot move from place to place : candle , raincoat

Q17) a) Living things respond to changes

b) Living things reproduce.

Q18) a) Bat

b) The bat is a mammal ,so it must not be in the bird group.

c) Birds and insects

Q19) Similarity 1 : Both have roots

Similarity 2 : Both have leaves.

Q20) a) Grow singly – B , C

Grow in clusters – A , D

b) The plants in part (a) reproduce by seeds but non-flowering plants reproduce by spores.

c) Fungi

Q21) a) i) X

ii) The plate that used hand soap X has the least amount of bacteria left.

b) We can remove the bacteria using soap when we wash our hands.

c) Yogurt can be eaten. It helps our digestion.

Q22) a) Both cannot be seen with the naked eye.

b) Living thing C harm the body but living thing D does not harm the body.

c) A