



**HENRY PARK PRIMARY SCHOOL**  
**FIRST SEMESTRAL ASSESSMENT 2018**

**PRIMARY 3**

**SCIENCE**

**SECTION A (30 MARKS)**

**INSTRUCTIONS TO CANDIDATES**

1. Do not turn over this page until you are told to do so.
2. Follow all instructions carefully.
3. Answer all questions.
4. Shade your answers on the Optical Answer Sheet (OAS) provided.

Name: \_\_\_\_\_ ( )

Class: Primary 3 ( )

Date: 14 May 2018

Total Time : 1 h 30 min

<b>Section</b>	<b>Marks</b>
<b>A</b>	<b>/ 30</b>
<b>B</b>	<b>/ 8</b>
<b>C</b>	<b>/ 12</b>
<b>Total (A+B+C)</b>	<b>/ 50</b>

Parent's Signature: \_\_\_\_\_

**Section A : (15 x 2 marks = 30 marks)**

For each question from 1 to 15, four options are given. One of them is the correct answer. Make your choice (1, 2, 3 or 4). Shade the correct oval (1, 2, 3 or 4) on the Optical Answer Sheet.

1. Nicole observed four things, Q, R, S and T, in her kitchen for a month. She recorded her observations in the table below.

Thing	Growth	Movement
Q	grew bigger	moved from the kitchen to the hall by itself
R	no change in size	could not move on its own
S	no change in size	moved when the button on its body was pressed
T	grew bigger in water and shrank back to its original size when removed from water	could not move on its own

Which one of the following is a living thing?

- (1) Q
- (2) R
- (3) S
- (4) T

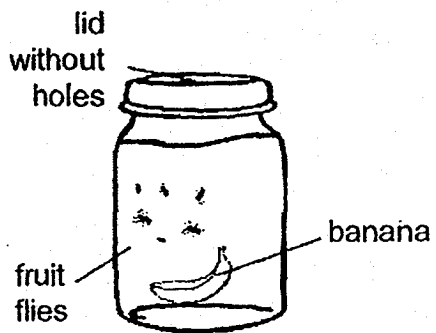
2. Marilyn wants to find out if animal Z is an amphibian.

Which one of the following ways would help Marilyn confirm that animal Z is an amphibian?

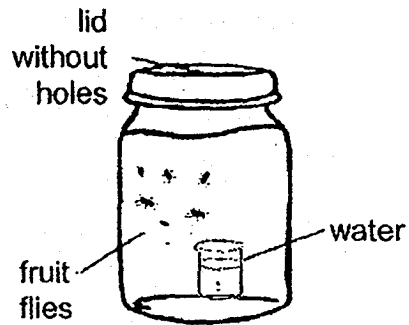
- (1) Check if animal Z swims.
- (2) Check if animal Z lays eggs.
- (3) Check if animal Z lives on land.
- (4) Check if animal Z has moist skin.

3. In which one of the following set-ups would the fruit flies live the longest?

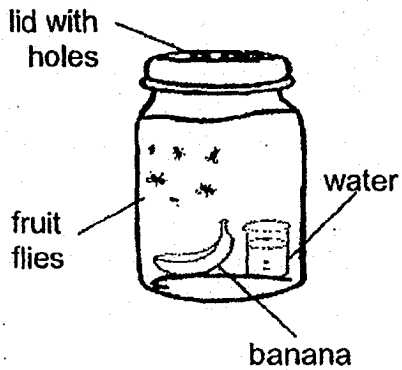
(1)



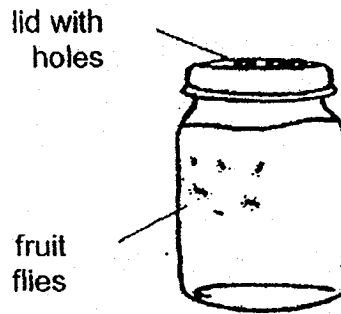
(2)



(3)

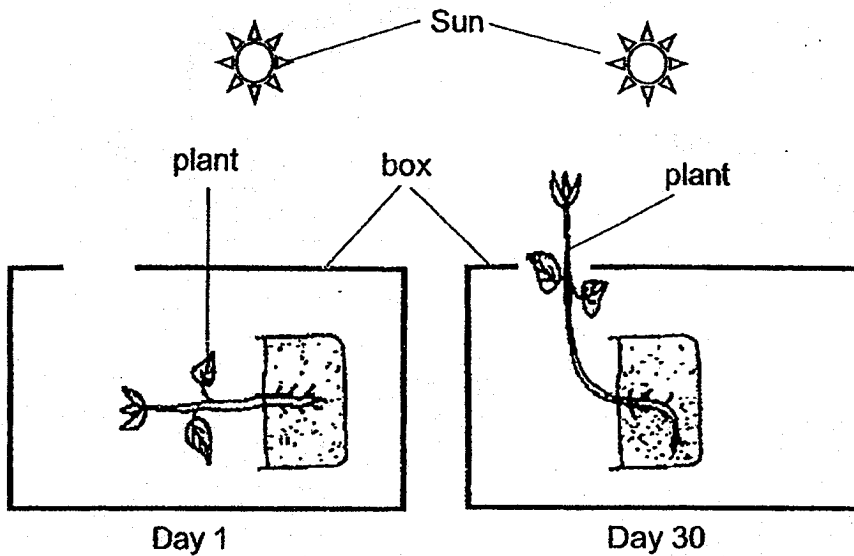


(4)



4. James wanted to carry out an experiment using a plant.

On Day 1, he placed the plant in a box as shown in the diagram below. On Day 30, the direction of the stem of the same plant had changed as shown below.

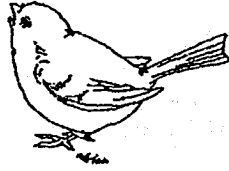


Based on this experiment, which of the following characteristics of living things does the change show?

- A Living things grow.
- B Living things reproduce.
- C Living things need air and water to survive.
- D Living things respond to changes around them.

- (1) A and C only
- (2) A and D only
- (3) B, C and D only
- (4) A, B, C and D

5. 3 students observed the animal shown below and were asked to classify it.



They gave their reasons on why the animal was classified as a bird.

- A It has a tail.
- B It has wings.
- C It has feathers.

Which of the above statement(s) is/are correct?

- (1) A only
- (2) C only
- (3) A and B only
- (4) A and C only

6. Which one of the following statements is correct?

- (1) Fungi can make their own food.
- (2) Fungi need air, water and food to survive.
- (3) Fungi only feed on dead matter to survive.
- (4) Fungi can only be seen through a microscope.

7. Four students in a class were asked to explain why the plant shown below is an adult plant.



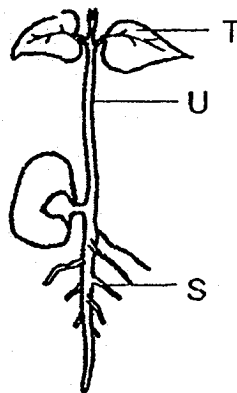
Below are their explanations.

- Jim : It is an adult plant because it is tall and big.  
 Ann : It is an adult plant because it produces flowers and fruits.  
 Kate : It is an adult plant because it has green leaves to make food.  
 Charles : It is an adult plant because it needs a support to grow upwards.

Which student is correct?

- (1) Jim
- (2) Ann
- (3) Kate
- (4) Charles

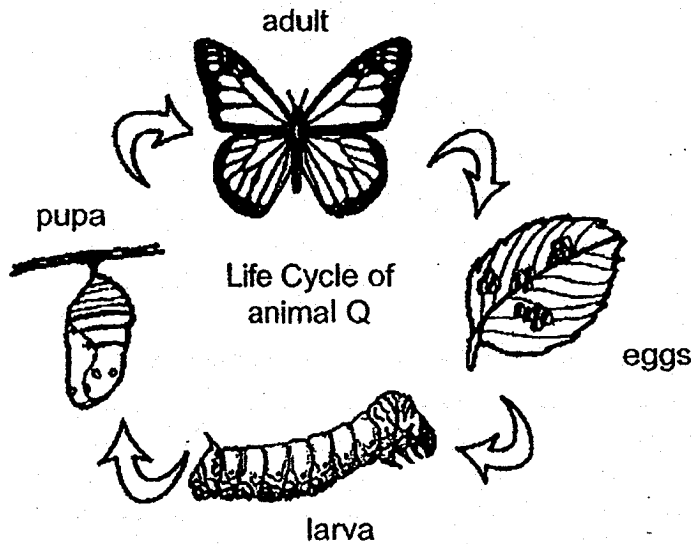
8. The diagram below shows a young plant.



Which one of the following correctly identifies the parts of the young plant?

	S	T	U
(1)	root	stem	leaf
(2)	shoot	root	stem
(3)	root	leaf	stem
(4)	stem	leaf	root

9. The diagram below shows the life cycle of animal Q.



Which one of the following animals has a similar life cycle to animal Q?

- (1) frog
- (2) beetle
- (3) chicken
- (4) cockroach

10. The table below describes the stages of the life cycles of four animals, K, L, M and N.

	animal K	animal L	animal M	animal N
It has a 4-stage life cycle.	✓	x	x	x
The eggs are laid in water.	✓	✓	✓	x
The young looks like the adult.	x	✓	x	✓

A tick (✓) indicates that the description is correct and a cross (x) indicates that the description is wrong.

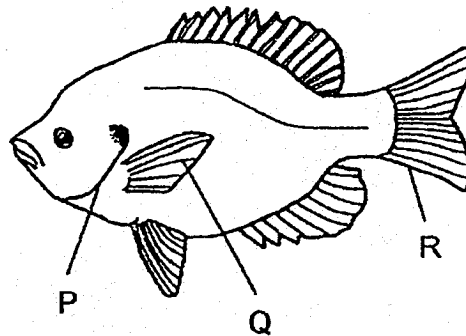


mosquito

Which of the following animal is likely to be a mosquito?

- (1) animal K
- (2) animal L
- (3) animal M
- (4) animal N

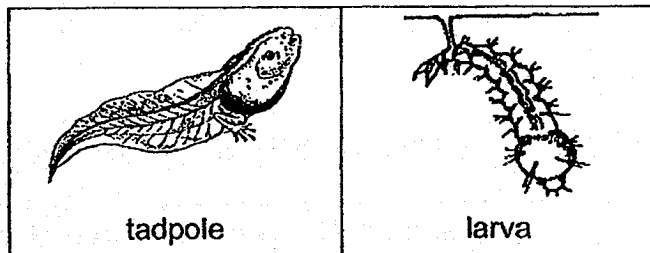
11. The diagram below shows a fish.



Which of the following identifies the parts of the fish correctly?

	Fin	Tail	Gill
(1)	P	Q	R
(2)	Q	R	P
(3)	R	Q	P
(4)	Q	P	R

12. The diagrams below show the young of a frog and a mosquito.

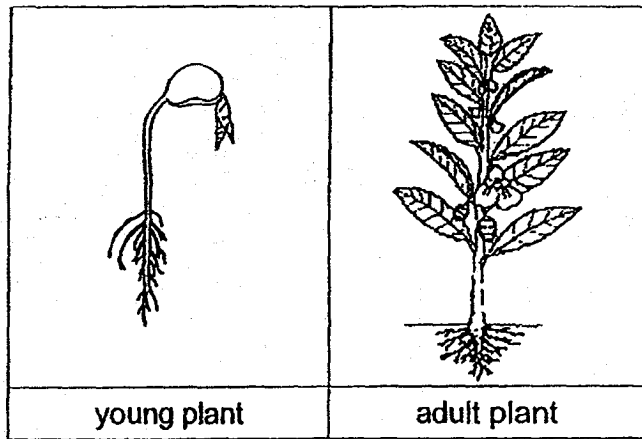


Which one of the following statements below is **not** correct?

- (1) Both live in water.
- (2) Both breathe through gills in water.
- (3) Both do not resemble their parents.
- (4) Both can live on land when turned into adults.



13. The diagrams below show a young plant and an adult plant.



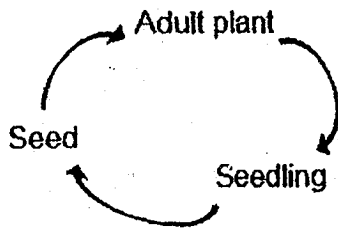
Which of the following can both the young plant and adult plant do?

- A produce fruits
- B produce seeds
- C absorb water through their roots

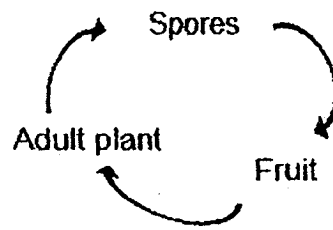
- (1) A only
- (2) C only
- (3) A and B only
- (4) B and C only

14. Which one of the following shows the correct life cycle of flowering plants?

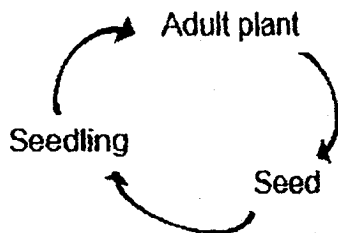
(1)



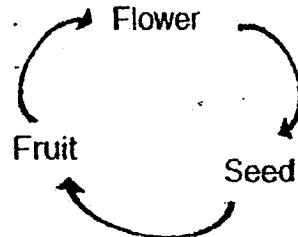
(2)



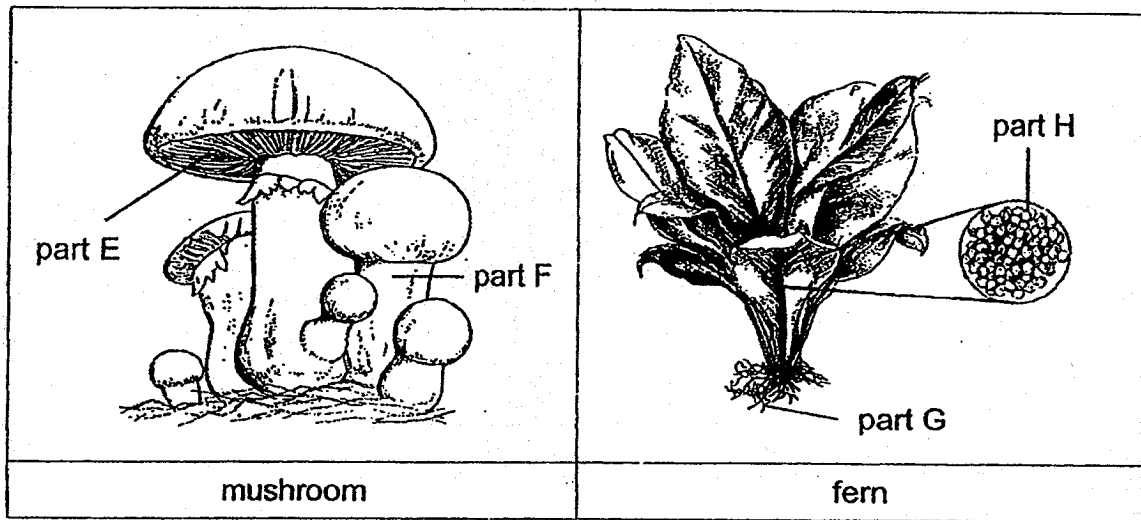
(3)



(4)



15. The diagram below shows a mushroom and a fern.



Which parts of the mushroom and fern help them to reproduce?

- (1) E & G
- (2) F & H
- (3) G & F
- (4) H & E

End of Section A



**HENRY PARK PRIMARY SCHOOL**  
**FIRST SEMESTRAL ASSESSMENT 2018**  
**PRIMARY 3**  
**SCIENCE**  
**SECTION B & C (20 MARKS)**

INSTRUCTIONS TO CANDIDATES

1. Do not turn over this page until you are told to do so.
2. Follow all instructions carefully.
3. Answer all questions.

Name: \_\_\_\_\_ (    )

Class: Primary 3 (    )

Date: 14 May 2018

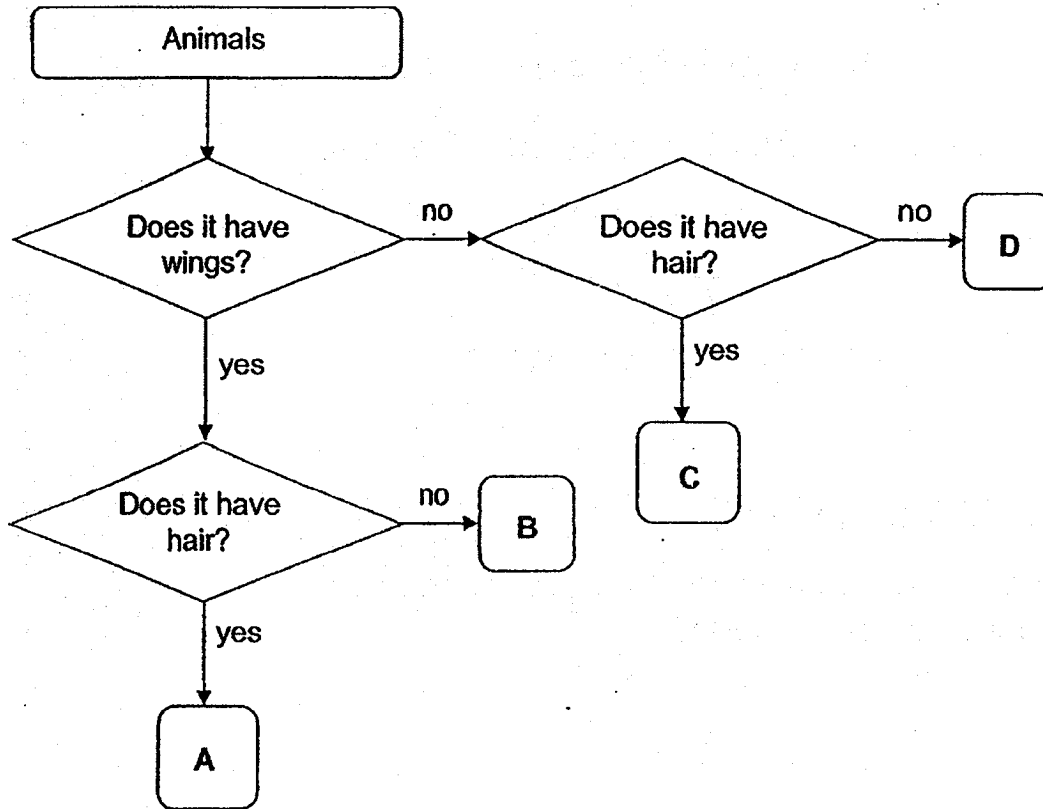
Total Time : 1 h 30 min

Marks for Sections B & C : \_\_\_\_\_

**Section B : (4 x 2 marks = 8 marks)**

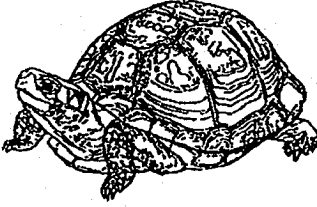

Write your answers to questions 16 to 19 in the spaces given. Each question is 2 marks.

16. Study the flow chart carefully.

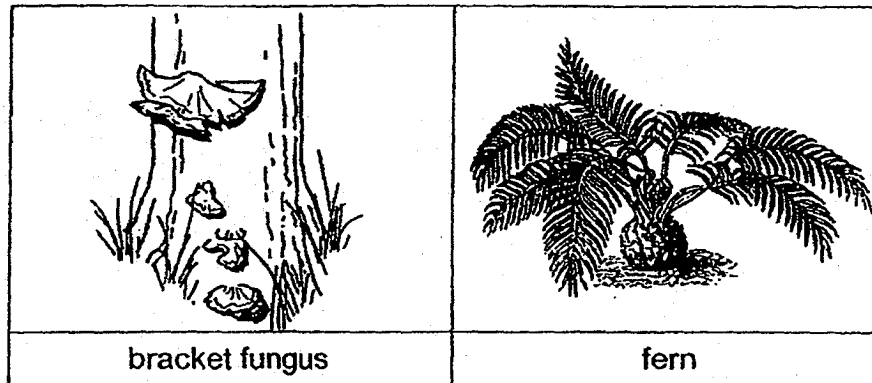


Observe the two animals in the table shown below.

Which animal, A, B, C or D, do they match with, based on the description in the flow chart?  
Write your answers in the table below.

	Animal
a)	
b)	

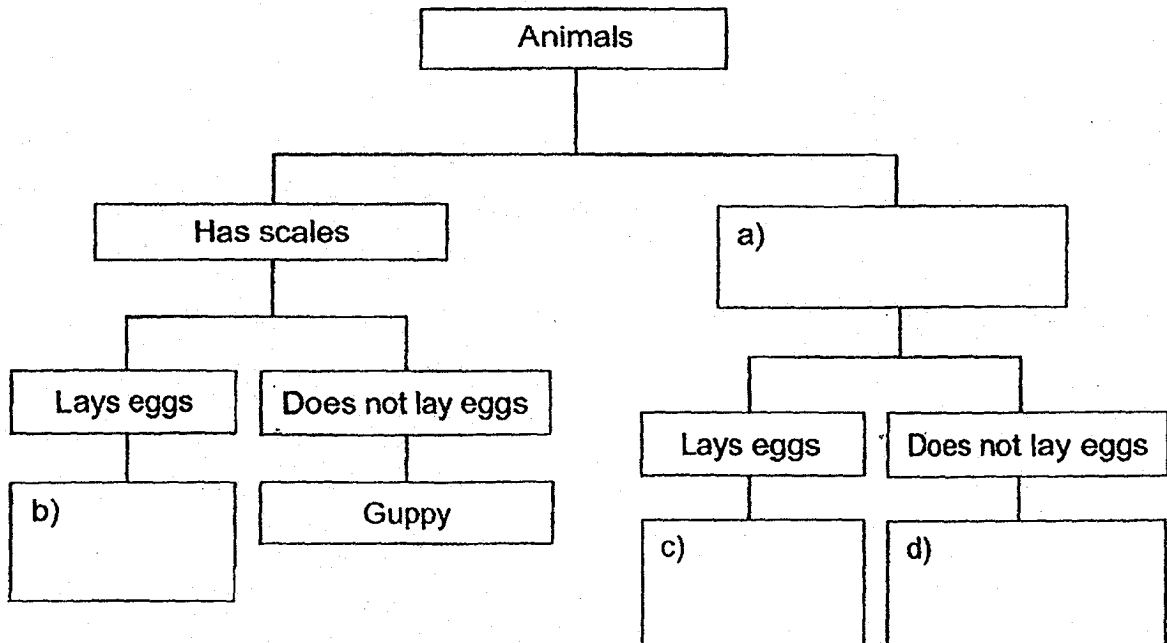
17. Fill in the blanks based on the diagrams shown below.



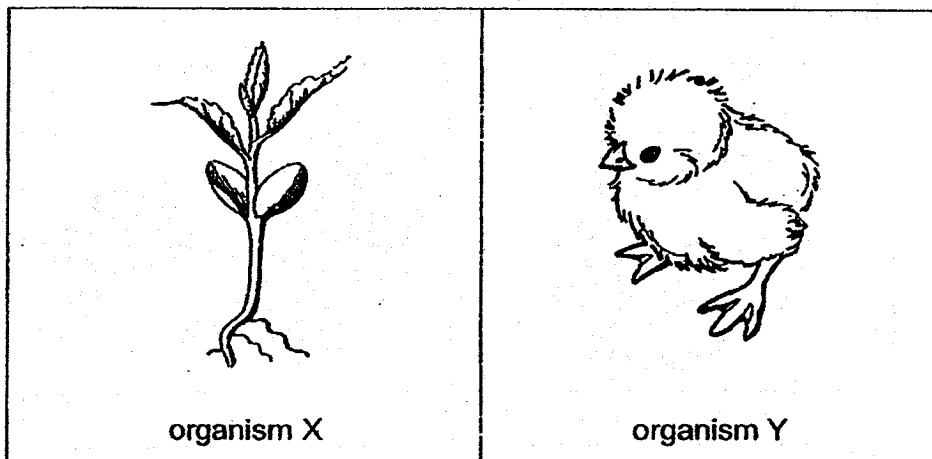
- a) Both the bracket fungus and fern reproduce by \_\_\_\_\_.
- b) The fern makes its own \_\_\_\_\_.

18. The classification table below shows how some animals are classified.

Elephant	Does not have scales	Has hair
Shark		Salamander



19. Study the two organisms below.



Fill in the column on the right with a tick (✓) for a correct statement and a cross (x) for the wrong statement.

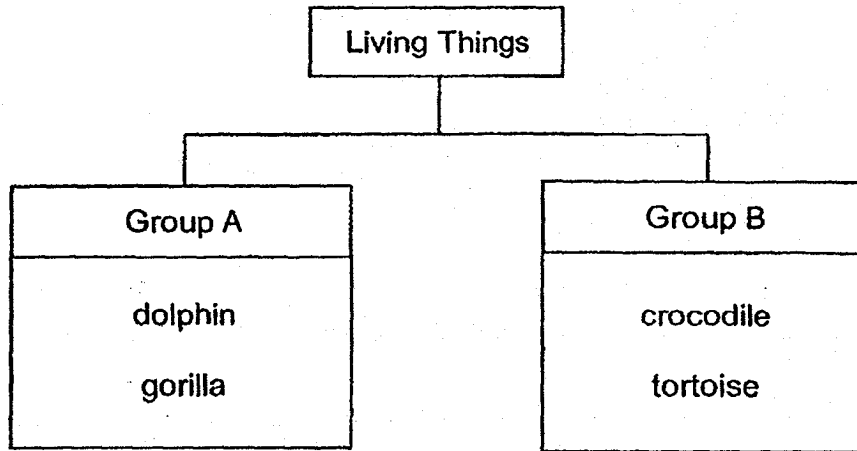
	x / ✓
a) Organisms X and Y are living things.	
b) Organisms X and Y are at their young stages.	
c) Organisms X and Y can make food.	
d) Organisms X and Y are hatched from their eggs.	

**End of Section B**

**Section C : (12 marks)**

Write your answers to questions 20 to 23 in the spaces given. Each question carries 2 to 4 marks.

20. Ryan grouped the following things into a classification chart as shown below.



Ryan then found organism X in his garden.

He listed his observations on organism X as shown below.

- moves from place to place
- moves when touched
- lays eggs
- has dry skin covered with scales

a) Based on his observation of organism X, in which group should Ryan place organism X in the classification chart above? Give a reason for your answer. [2]

Group : \_\_\_\_\_

Reason : \_\_\_\_\_

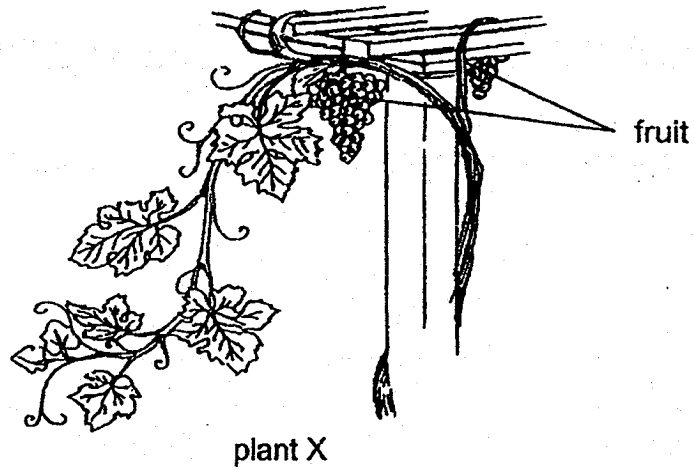
b) How were the living things grouped?

Give a suitable **heading** for group A and group B. [2]

i) Group A : \_\_\_\_\_

ii) Group B : \_\_\_\_\_

21. The diagram below shows plant X.

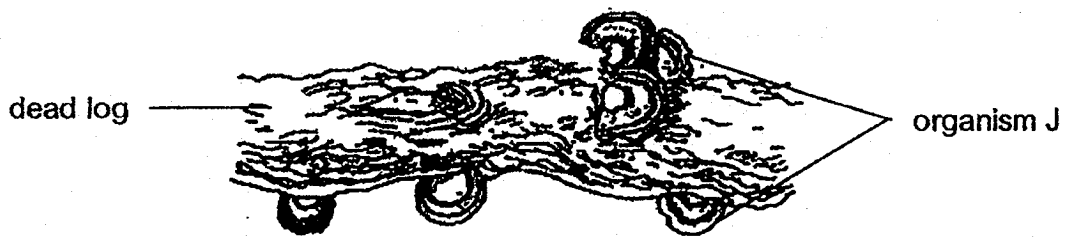


- a) Is plant X a flowering or a non-flowering plant?  
State a reason for your answer based on the information given. [2]

---

---

The diagram below shows organism J growing on a dead log as shown below.



- b) State how organism J obtains food to survive. [1]

---

---



22. Animal N, shown below, has thick fur on its body and lays eggs. It also feeds its young with its milk.



animal N

- a) John said that animal N is a mammal. Give 2 reasons why he is correct. [2]

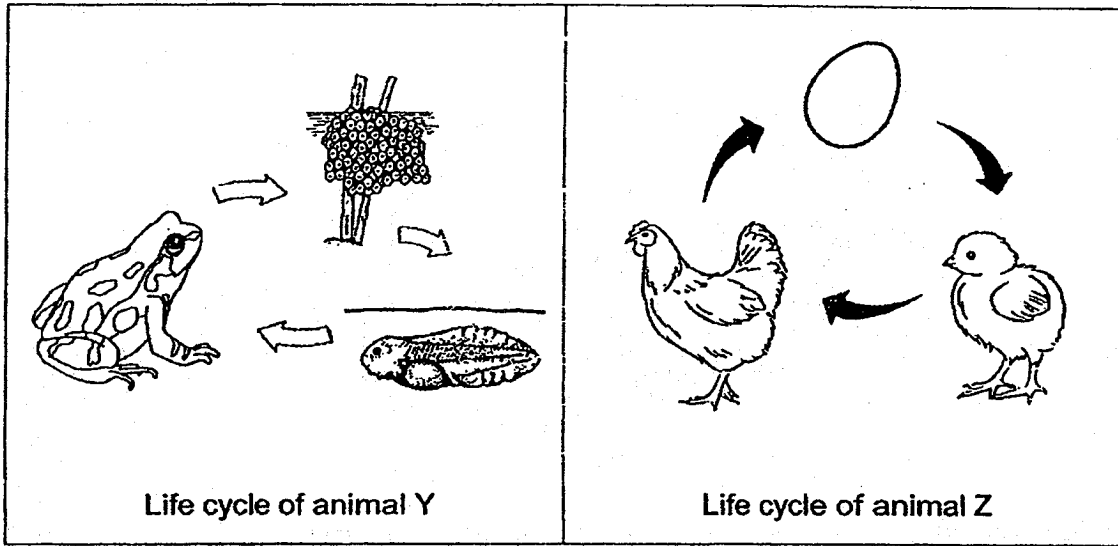
Reason 1 : \_\_\_\_\_

Reason 2 : \_\_\_\_\_

- b) State one characteristic of animal N that is **not** common in mammals. [1]

\_\_\_\_\_

23. Study the life cycles of animals Y and Z below.



a) State the difference between the life cycles of animals Y and Z for the following : [1]

Where eggs are laid	

b) State the similarity between the life cycles of animals Y and Z for the following : [1]

Number of stages	

End of Section C

**EXAM PAPER 2018 (P3)**

**SCHOOL : HENRY PARK**

**SUBJECT : SCIENCE**

**TERM : SA1**

Q1	Q2	Q3	Q4	Q5	Q6	Q7	Q8	Q9	Q10
1	4	3	2	2	2	2	3	2	1
Q11	Q12	Q13	Q14	Q15					
2	2	2	3	4					

Q16) a) D

b) A

Q17) a) Both the bracket fungus and fern reproduce by spores.

b) The fern makes its own food.

Q18) a) Does not have scales.

b) Shark

c) Salamander

d) Elephant

Q19) a) tick

b) tick

c) cross

d) cross

Q20) a) Group : B

Reason : Organisms X lays eggs and the animals in Group B lay eggs also. Organisms X has dry skin covered with scales and the animals in Group B also have dry skin covered with scales.

b) i) Group A : mammals

ii) Group B : reptiles

Q21) a) Plant X is a flowering plant because it has fruit.

b) Organisms J feeds on the dead log to stay alive.

Q22) a) Reason 1 : Animal N has fur on its body and mammals have fur on their body.

Reason 2 : Animal N feeds its young with milk and mammals feed their young with milk.

b) Animal N lays eggs but mammal usually give birth to young.

Q23) a) Animal Y lays its egg in water but animal Z lays its egg on land.

b) Animal Y has three stages in its life cycle and Animal Z has three stages in its life cycle.