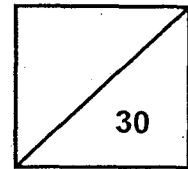


Red Swastika School
Primary 3 Science 2018
Class Test 2



Name: _____ () Parent's Signature: _____

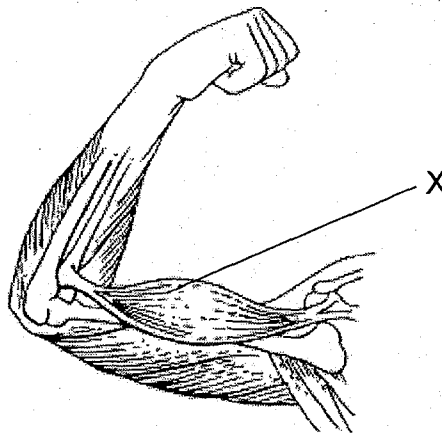
Class: Pr. 3 _____ Date: _____

Section A: Multiple-Choice Questions (9 x 2 = 18 marks)

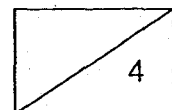
Choose the most suitable answer and write its number in the brackets provided.

1. Which of the following organs is not part of the respiratory system?
- (1) nose
 - (2) heart
 - (3) lungs
 - (4) windpipe
- ()

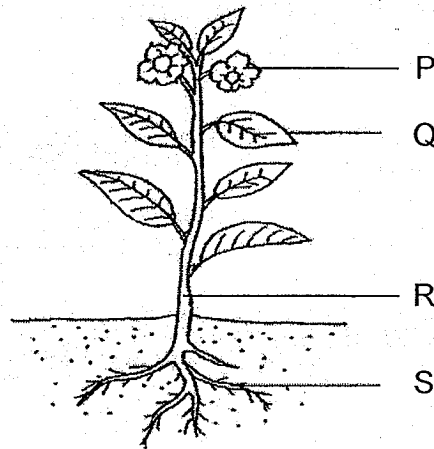
2. Which human body system does part X belong to?



- (1) skeletal system
 - (2) digestive system
 - (3) muscular system
 - (4) circulatory system
- ()



3. The diagram below shows a flowering plant.

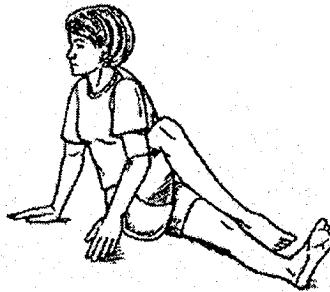


Which of the following is correct?

	P	Q	R	S
(1)	flower	stem	leaf	root
(2)	flower	leaf	stem	root
(3)	fruit	leaf	root	stem
(4)	fruit	root	stem	leaf

()

4. Sue was doing some stretches after exercising in the park.

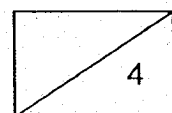


Which body system(s) was/were used while Sue was stretching?

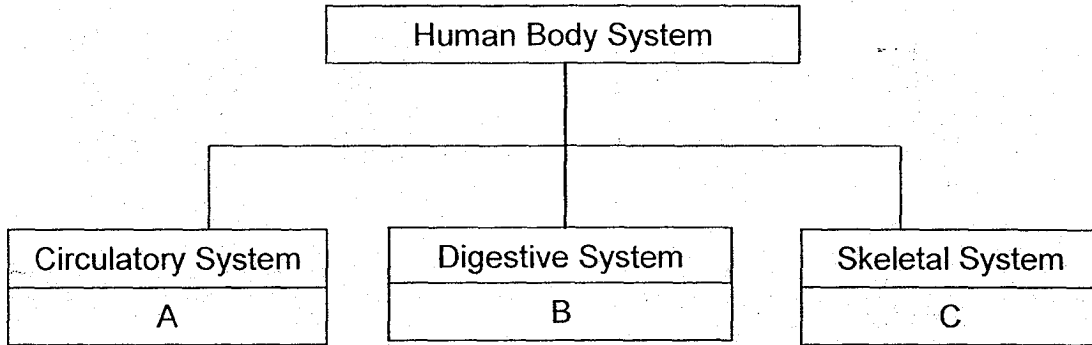
- A: Skeletal system
- B: Muscular system
- C: Circulatory system
- D: Respiratory system

- (1) B only
- (2) A and C only
- (3) C and D only
- (4) A, B, C and D

()



5. Study the classification chart carefully.

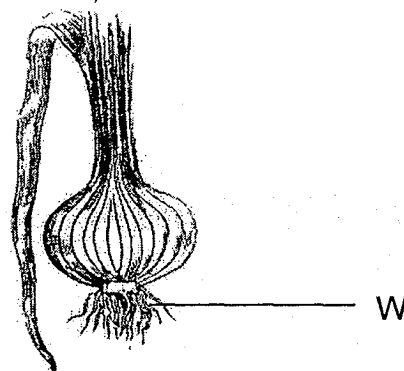


Which of the following correctly represents organs A, B and C?

	A	B	C
(1)	blood vessels	large intestine	skull
(2)	small intestine	stomach	ribcage
(3)	heart	skull	stomach
(4)	large intestine	blood vessels	ribcage

()

6. The diagram below shows a picture of an onion.

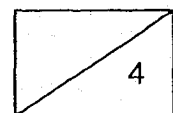


What is the main function of the part labelled W?

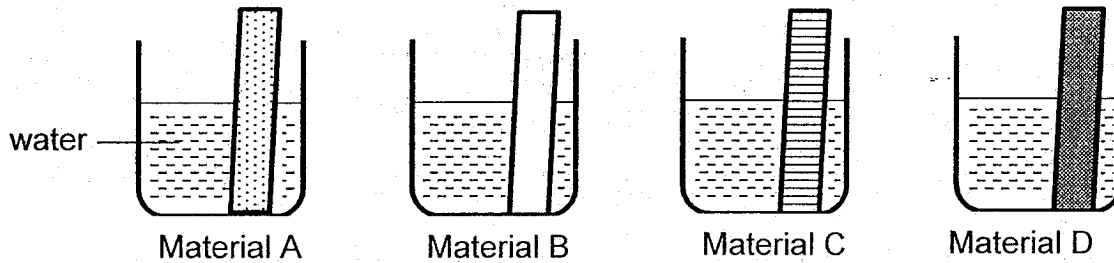
- A: Helps to attract insects.
- B: Makes food for the plant.
- C: Absorbs water and minerals from the soil.

- (1) B only
- (2) C only
- (3) B and C only
- (4) A, B and C

()



Use the following diagrams to answer questions 7 and 8.



Strips of four materials (A, B, C and D) were put into four containers filled with 20cm³ of water. After a few minutes, the amount of water left in each of the containers were recorded. The table below shows the results.

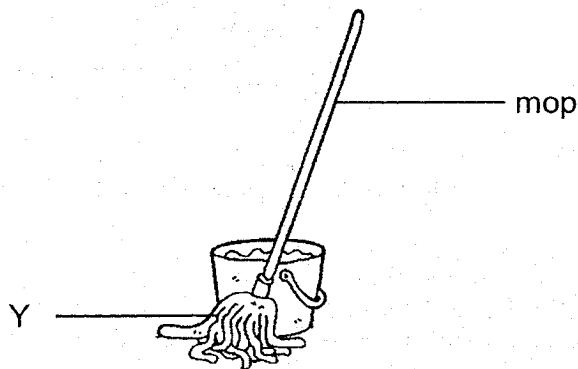
Material	Amount of water left in container (cm ³)
A	13
B	20
C	8
D	0

7. Based on the information given above, which material (A, B, C or D) is most likely to be waterproof?

- (1) A
- (2) B
- (3) C
- (4) D

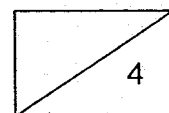
()

8. Which material is most suitable to make part Y of the mop as seen below?

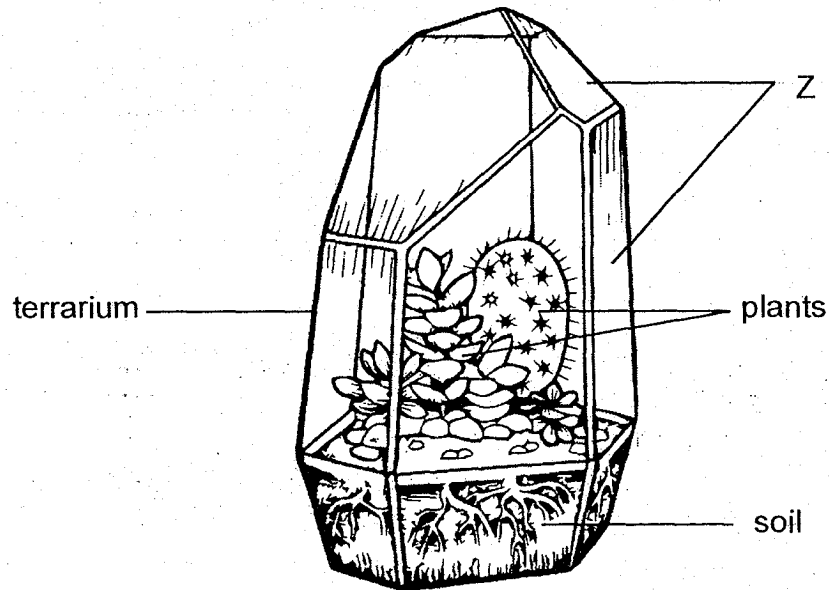


- (1) A
- (2) B
- (3) C
- (4) D

()



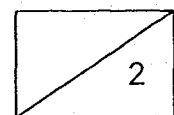
9. Lisa placed some plants and soil in the terrarium shown below. The terrarium is placed near the window to help the plants grow well. Lisa could observe the plants without opening the terrarium.



Which of the following best shows her choice of material for part Z and the reason for her choice?

	Material for part Z	Reason
(1)	plastic	It is flexible.
(2)	metal	It is waterproof.
(3)	wood	It does not break easily.
(4)	glass	It allows light to pass through.

()



Section B: Open-ended Questions (4 Questions – 12 marks)

Read the questions carefully and write your answer in the spaces provided.

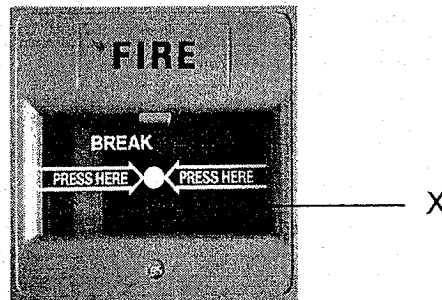
10. A test is conducted to find out the amount of weight that needs to be put on four different materials (P, Q, R, S) before it breaks.

Material	Amount of weight placed before material breaks (g)
P	550
Q	250
R	700
S	950

- (a) Put a tick (✓) in the boxes below to show the variables which should be kept the same to conduct a fair test. (1m)

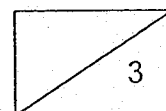
Variable	Kept the same
Type of material	
Thickness of material	
Length of the material	

Max noticed the following object mounted on a wall in a shopping mall. He asked his father what it was. His father explained that in case of a fire, anyone in the mall can press on the white dot in the middle of part X of the object to break it so that the fire alarm will be activated.

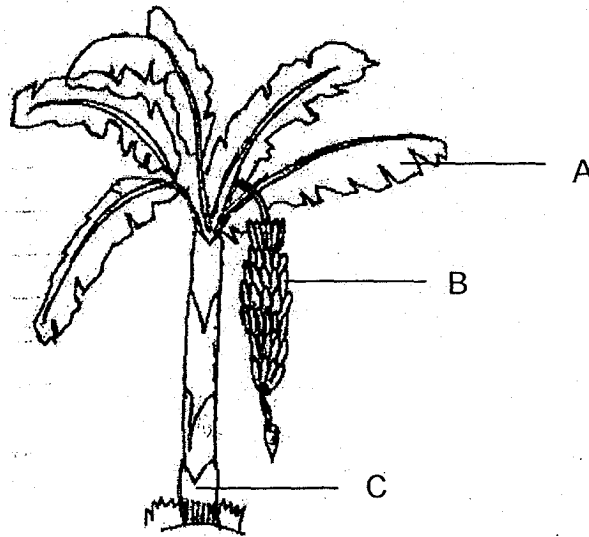


- (b) Why is material Q the most suitable to make part X? (1m)

- (c) Based on the table, what can you conclude about the strength of material S? (1m)

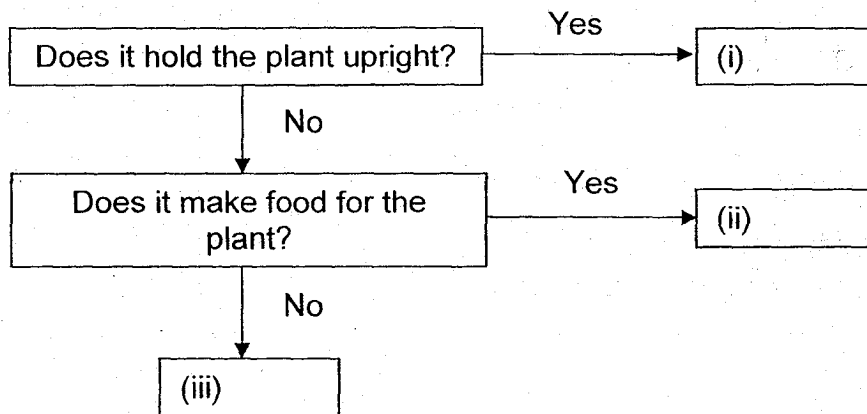


11. The diagram below shows parts of plant Y.

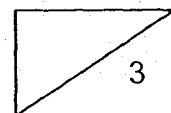


(a) Identify the plant part which part B represents. ($\frac{1}{2}$ m)

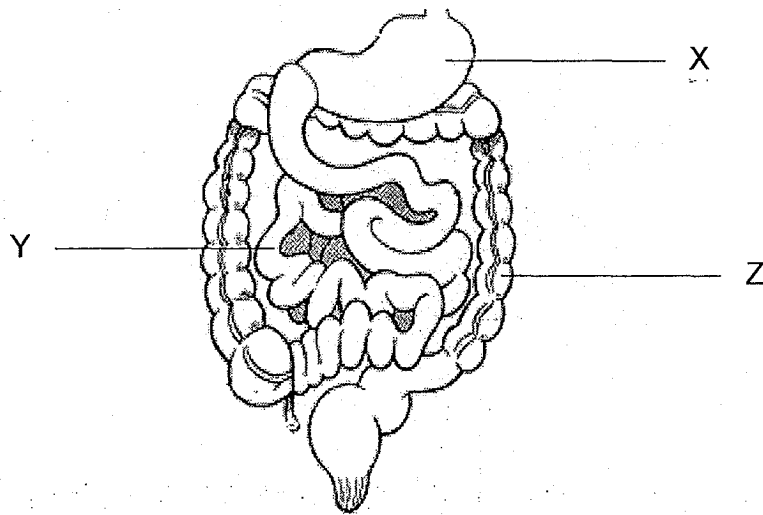
(b) The flow chart below describes the functions of the parts of plants. Based on the diagram for plant Y, complete the empty boxes by writing A, B or C. ($1\frac{1}{2}$ m)



(c) Is plant Y a flowering plant? Explain your answer. (1m)



12. The diagram below shows parts of the human digestive system.



(a) Which two parts in the human digestive system are not seen in the diagram? (2m)

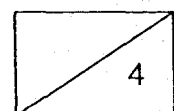
(i) _____

(ii) _____

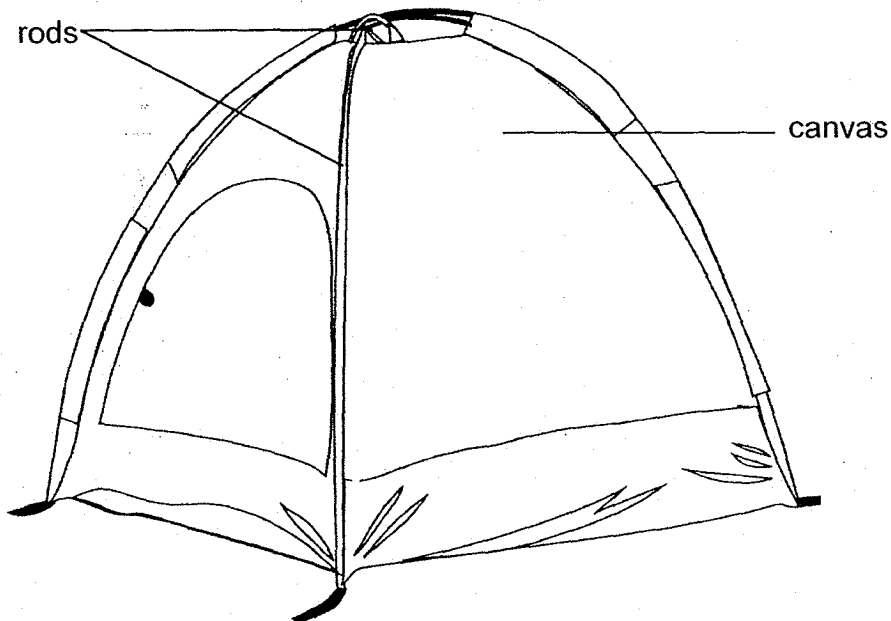
(b) Based on the diagram, write 'T' for 'True' or 'F' for 'False' for each statement. (1m)

	Statement	'T' or 'F'
(i)	Digestion continues in part Z.	
(ii)	Digested food passes through the walls of part X into the bloodstream.	

(c) Based on the diagram, which part(s) (X, Y or Z) is/are digestive juices not added? (1m)



13. Tammy and Timmy went camping with their family. Their parents told them to fix the rods as shown below first before they can put the canvas over the tent. The rods support the tent and give its shape.

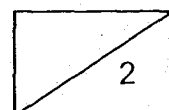


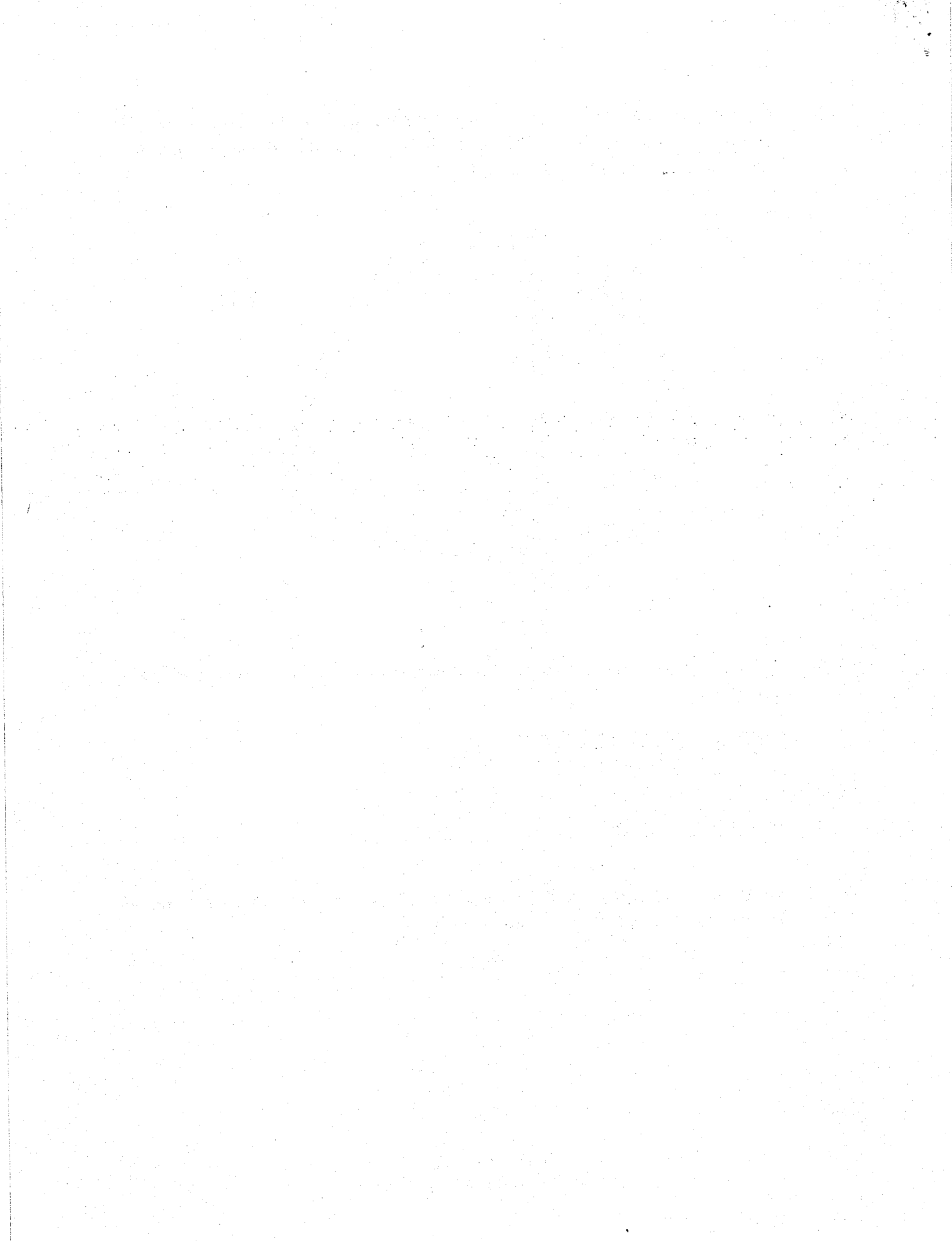
- (a) Tick the human body system that has a similar function as the rods used in the tent. (1m)

Human body system	Tick (✓)
muscular system	
skeletal system	
circulatory system	

- (b) Other than supporting and giving the body shape, what is another function of the human body system identified in (a)? (1m)

END OF PAPER
PLEASE CHECK YOUR WORK.





Red Swastika School
P3 Class Test 2 2018
Answer Key

Section A: MCQ – 2 marks each

- | | | |
|-------|-------|-------|
| (1) 2 | (4) 4 | (7) 2 |
| (2) 3 | (5) 1 | (8) 4 |
| (3) 2 | (6) 2 | (9) 4 |

Section B: Open-ended Questions

10a) (1m – perfect answer)

Variable	Kept the same
Type of material	
Thickness of material	✓
Length of the material	✓

10b) Material Q breaks the most easily. /

Material Q requires the least weight before it breaks. (1m)

10c) Material S is the strongest. (1m)

11a) Fruit. ($\frac{1}{2}$ m)

11b) (i) C ($\frac{1}{2}$ m)

(ii) A ($\frac{1}{2}$ m)

(iii) B ($\frac{1}{2}$ m)

11c) Yes. Plant Y has fruits and only flowering plants can bear fruits. (1m)

12a) (i) Mouth (1m)

(ii) Gullet (1m)

12b) ($\frac{1}{2}$ m for each answer)

	Statement	'T' or 'F'
(i)	Digestion continues in part Z.	F
(ii)	Digested food passes through the walls of part X into the bloodstream.	F

12c) Z (1m)

13a)

Human body system	Tick (✓)
muscular system	
skeletal system	✓
circulatory system	

(1m)

13b) The system protects the organs in the body. (1m)

P3 Class test 2 Alternative answers

MCQ

	Proposed	Remarks
Students write A, B, C, D vs 1, 2, 3, 4 and answer is actually correct.	Accept	Ok but must inform students to write the correct MCQ options

Question 10b

	Proposed	Remarks
Q is the weakest among all the four materials.	1	Avoid using weakest, must apply back to the concept of 'break most easily'
Q can be more easily broken / most brittle than the other materials.	1	ok
Material Q is the <u>easiest</u> to break	1	ok
It is easily broken. It holds less weight It is very easy to break / It is easy to break It is easier to open It can be broken with lesser strength If you do not use Q, it will be hard to break. Q is the most suitable because it is easy to break. (no superlatives) You can break it easily. S will immediately break if you press on it. It takes quick to break. Do not need to press so hard to break part X. It is easier to break. Q is brittle and easy to break.	0 (no comparative words)	ok

Question 10c

	Proposed	Remarks
S is stronger than the others.	1	Ok
S is the hardest to break.	1	Ok
S has the greatest strength.	1	Ok
Material S can withstand the most amount of weights before breaking	1	½ (must link to strength)
It is strong as it can <u>hold the most weight</u> . S is very strong as it needs the most amount of weight on it to break.	1	½ (must link to strength)
The strength of material S is the <u>biggest</u> .	0.5	Ok
S can place the most weights. Material S can withstand heavy items Material S is very strong / Material S is strong Material S is strong enough to hold heavy things Material S can hold 950g before breaking It is harder to break. S is strong/very strong. S is very hard to break. S is a very strong material and will not break easily. S can carry 950g before it breaks. It is the heaviest/It is heavy. S must be metal because metal is very strong. S is stronger in weight. Material S is too strong to break easily so it is not suitable for a fire alarm. It does not break easily. S is not easily broken as it is strong. S is durable. (durable) S does not break easily. S takes a long time to break. S is very strong.	0 (no comparative words)	Ok

Question 11a

	Proposed	Remarks
Dead Leaf	0	ok
Flowers	0	ok

Question 11b

P3 Class test 2 Alternative answers

	Proposed	Remarks
Students write "stem", "leaves", "fruit" instead of "A", "B", "C".	0	ok

Question 11c

	Proposed	
<p>Is there a possibility of qn 11c) to be 0.5m for observation 0.5m for concept?</p> <p>Note: If student is able to answer Yes, it has fruit as flowers will develop into fruit. (award a max of <u>1/2m</u> for the idea of flowers developing into fruit).</p>	<p>Yes</p> <p>We will give 0.5m for stating the plant has fruits and 0.5m for stating all flowering plants bear fruits.</p>	Ok

<p>Yes. <u>B is a fruit</u> and flowers grow into fruit.</p> <p>Yes, it <u>bears fruit</u>.</p> <p>Yes, it <u>has fruits</u>. That means the fruit came from a flower.</p> <p>Yes. After a period of time, the flower will drop off and the tree will grow fruits and <u>Plant Y has fruits</u>.</p> <p>Yes. <u>Y has fruits</u>. That means it has flowers. Without flowers, there will be no fruits.</p> <p>Yes. Fruits come from flowers and <u>Y has fruits</u>. Therefore it is a flowering plant.</p> <p>Plant Y is a flowering plants as it <u>has fruit</u> before fruits they have flowers.</p> <p>Yes, because it <u>has/bears fruits</u>.</p> <p>Yes, because it <u>has fruits</u> and flower must appear before the plant can bear fruits.</p> <p>Yes, because <u>all flowering plants grow fruits</u>.</p> <p>Plant Y is a flowering plant because <u>it grows fruit</u> so plant Y can reproduce.</p> <p>Plant Y is a flowering plant because <u>plant Y produces fruits</u> in order to have fruits there must be flowers.</p> <p>Plant Y is a flowering plant because it <u>has fruits</u> on it and flowers will turn into fruits.</p> <p>Yes it <u>has fruits</u> and it will have flowers.</p> <p>Plant Y is a flowering plant because non-flowering plants does not have flowers and fruits but <u>flowering plants have flowers and fruits</u>.</p> <p>Plant Y is a flowering plant. <u>Plant Y grows fruit</u>. A fruit is reproduced by flower.</p> <p>Yes plant Y is a flowering plant. <u>Only flowering plants have fruits</u>.</p> <p>Yes as it can bear fruits/ it <u>has fruits</u>.</p> <p>Yes, <u>if a plant has fruits it is a flowering plant</u>.</p> <p>Plant Y is a flowering plant because <u>flowering plants have fruits</u>.</p> <p>Plant Y is a flowering plant because <u>plant Y has fruits</u> and the fruits come from the flower.</p>	<p>0.5</p>	
---	------------	--

P3 Class test 2 Alternative answers

Yes. <u>B is a fruit.</u> Flowering plants grow fruits.	1	Ok
Plant Y has <u>fruits</u> and only flowering plants <u>produce/make/develop/have/grow</u> fruits.	1	Ok
Plant Y is a flowering plant because some flowers will become fruits and <u>part B is a fruit.</u> 1	1	Ok
<p>Yes. Fruit is reproduced by the flower.</p> <p>Yes. Plants need flower to produce the fruits.</p> <p>Yes. After a flower blooms, it turns into fruit.</p> <p>Yes. It grows a flower to a fruit.</p> <p>Yes, it has flowers.</p> <p>Yes, because fruit starts as a flower / it must have flower before it can have fruits</p> <p>Yes, because the flower will turn into a fruit</p> <p>Plant Y is a flowering plant because it reproduces by seed and has already started sprouting fruits.</p> <p>Yes, fruits come from flowers.</p> <p>Yes because produce fruits.</p> <p>Yes because it produces flower.</p> <p>Plant Y is a flowering plant because <u>it make food for the plant.</u></p> <p>Y is a flowering plant. The plant needs flowers to grow first before it bears fruits.</p>	0	

P3 Class test 2 Alternative answers

Question 12a

	Proposed	
Mothe	0	Ok
Gulded	0	Ok

Question 12b

	Proposed	
Student writes "true", "false" vs "T", "F".	Accept	Ok

Question 12c

	Proposed	
(-1/2m for additional wrong answers) Eg. Z and X (1m for Z, minus 0.5m for X) X, Y, Z (1m for Z, minus 1m for X and Y)		Ok

Question 13a

	Proposed	
(-1/2m for additional wrong ticks)		Ok

Question 13b

	Proposed	
Accept only skeletal system protecting organs in the body. If student answers skeletal system works with muscular system to move. (award 1/2m as question is only asking about skeletal system)		
The muscular system works with the skeletal system for our body to move. Works with the muscular system to stand. Works with the muscular system to move. Skeletal system works closely with muscular system to enable us to move.	0.5	
It gives us muscles and when it works with the muscular system, we can move.	$0.5 - 0.5 = 0$	
It helps our body to move. Helps us to move. It is able to make our body move. It allows us to bend our elbows and knee joints. (Wrong fact) (0m)	0.5	
It helps to keep our body upright. Let us stand upright.	0 Same as supporting body	Ok
Protects different parts of the body. Protects important parts of the body. Works with the muscular system. Protect all the parts in our body.	0	Ok
Protects our organs Protects important/vital organs Protects heart/lungs/brain Protect important organs. Protects some of our organs. Protects the vital organs in our body. Protects important organs such as heart, lungs and brain. Protects our organs.	1	Ok
The muscular system works with the circulatory system and the skeletal system to help the human body move. (Child ticked muscular and skeletal system)	$1 - 0.5 = 0.5$	1m (Already penalised in the tick portion)

P3 Class test 2 Alternative answers

--	--	--