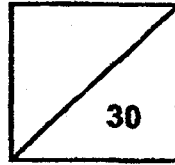


**Red Swastika School  
Primary 3 Science 2018  
Class Test 1**




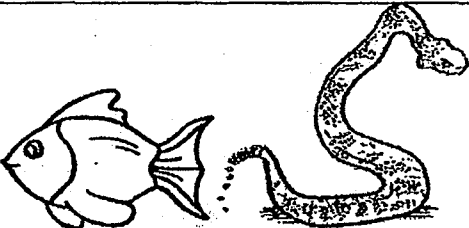
Name: \_\_\_\_\_ (    )    Parent's Signature: \_\_\_\_\_

Class: Pr. 3 \_\_\_\_\_    Date: \_\_\_\_\_

**Section A: Multiple-Choice Questions (9 x 2 = 18 marks)**

Choose the most suitable answer and write its number in the brackets provided.

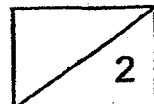
1    Some animals are placed into two groups as shown below.

A	B
	

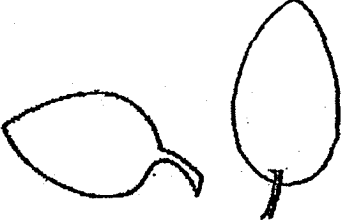
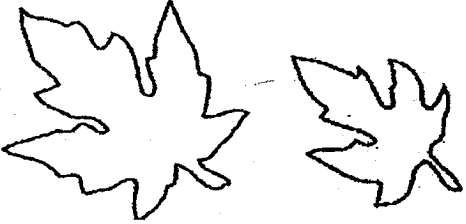
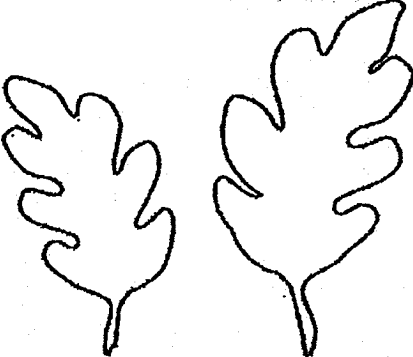
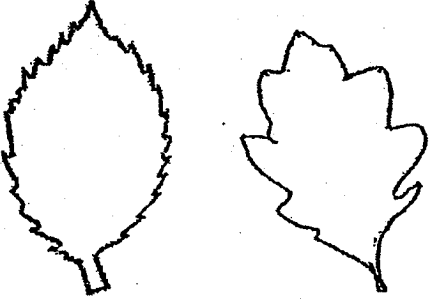
Which of the following could be the headings for the table?

	A	B
(1)	Can fly	Cannot fly
(2)	Have eyes	Does not have eyes
(3)	Have legs	Does not have legs
(4)	Have wings	Does not have wings

(    )



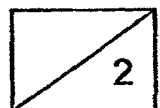
2 Siti grouped some leaves into four different groups as shown below.

Group W	Group X
	
Group Y	Group Z
	

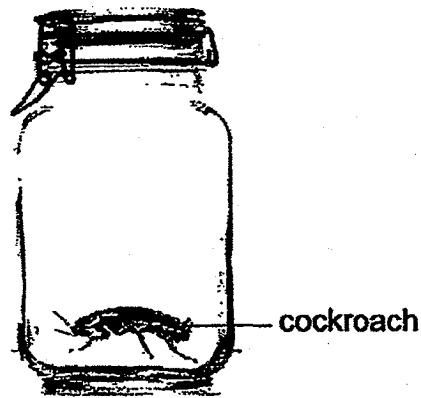
Which group has a leaf that has been grouped wrongly?

- (1) Group W
- (2) Group X
- (3) Group Y
- (4) Group Z

( )



- 3 Kenny kept a cockroach in an empty container. After a few weeks, he observed that the cockroach had died.



Which characteristic of living things does this show?

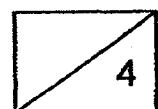
- (1) Living things grow.
- (2) Living things move.
- (3) Living things reproduce.
- (4) Living things need air, food and water to survive.

( )

- 4 Which of the following is true of all plants?

- (1) All plants can reproduce.
- (2) All plants have strong stems.
- (3) All plants have green leaves.
- (4) All plants can produce flowers.

( )

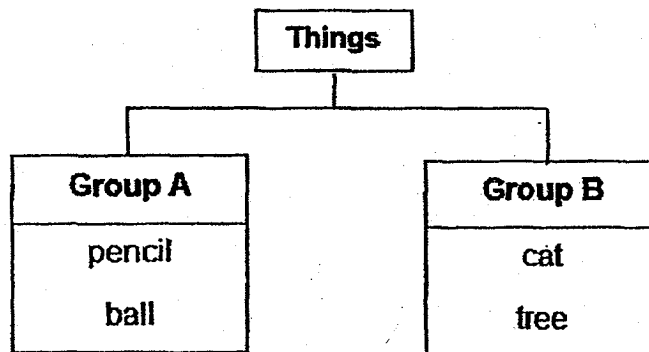


- 5 Which of the following correctly state the difference between flowering and non-flowering plants?

	Flowering plants	Non-flowering plants
(1)	Have roots	Does not have roots
(2)	Can bear fruits	Cannot bear fruits
(3)	Have stems	Does not have stems
(4)	Can reproduce	Cannot reproduce

( )

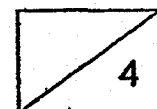
- 6 The classification chart below shows how some things are grouped.



Which of the following things can be classified under Group A and Group B?

	Group A	Group B
(1)	ruler	cookie
(2)	cup	plate
(3)	bird	fish
(4)	stone	bird

( )



7 Four students each made a statement about a car.

Amelia:	A car is a living thing because it can move.
Bala:	A car is a non-living thing because it cannot grow.
Catherine:	A car is a living thing because it can produce sounds.
Daniel:	A car is a non-living thing because it cannot reproduce.

Whose statements are correct?

- (1) Bala and Daniel only
- (2) Bala and Catherine only
- (3) Amelia and Daniel only
- (4) Amelia and Catherine only

( )

8 Raju placed a pot of plant near the window in his house. The pictures below show the plant when it was first placed near the window and after one week.

window



Plant when it was first placed near the window

window

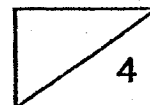


One week later

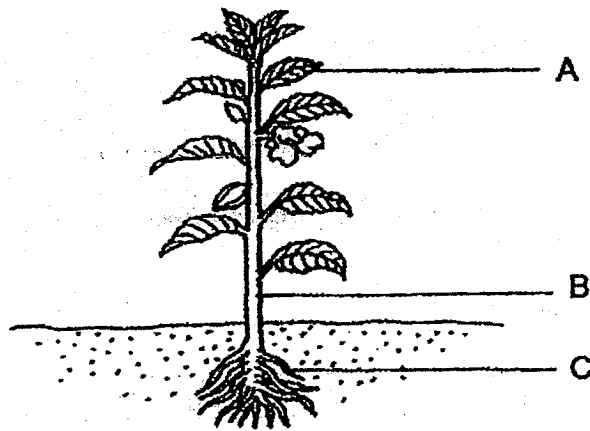
Based on the observation, what can Raju infer about the characteristic of the plant?

- (1) The plant can die.
- (2) The plant needs water.
- (3) The plant can reproduce.
- (4) The plant responds to changes around it.

( )



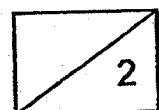
9 Study the plant below.



Which of the following correctly identifies parts A, B and C?

	A	B	C
(1)	leaf	fruit	root
(2)	flower	stem	fruit
(3)	leaf	stem	root
(4)	fruit	root	stem

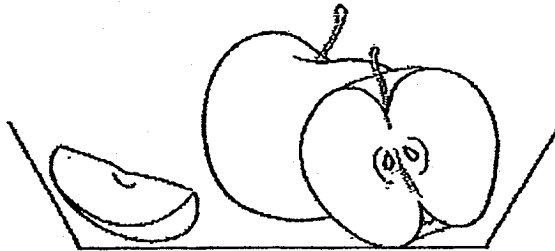
( )



**Section B: Open-ended Questions (3 Questions – 12 marks)**

Read the questions carefully and write your answer in the spaces provided.

10 Mrs Tan cut an apple into pieces as shown below.



(a) An apple comes from a plant. Which part of the plant is the apple? (1m)

---

The table below shows the characteristics of two plants.

Characteristic	P	Q
Bear fruits	Yes	No
Grow on land	Yes	Yes
Reproduce from spores	No	Yes
Have roots, stem and leaves	Yes	Yes

(b) State a difference between plant P and Q. (1m)

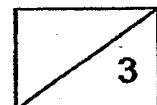
---

---

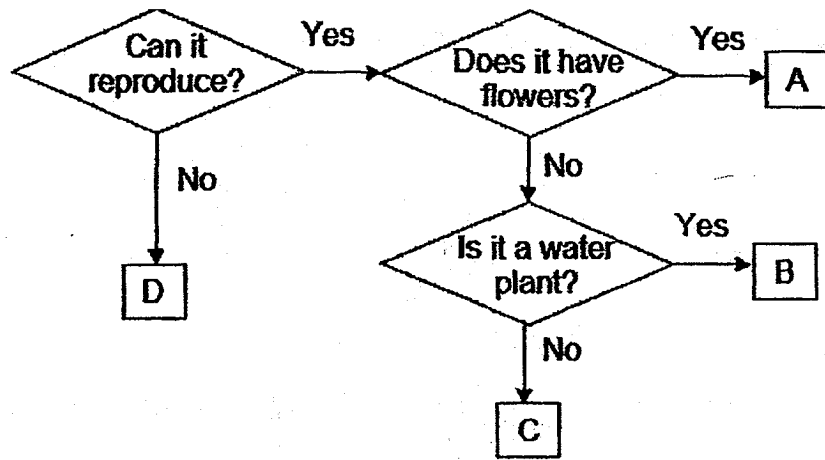
(c) Which of the plants, P or Q, is a non-flowering plant? (1m)

---

---



11 Study the flow chart carefully.



(a) Based on the information above, write down two characteristics of B. (2m)

Characteristic 1: \_\_\_\_\_

\_\_\_\_\_

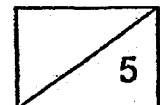
Characteristic 2: \_\_\_\_\_

\_\_\_\_\_

(b) Which item, A, B, C or D is a non-living thing? (1m)

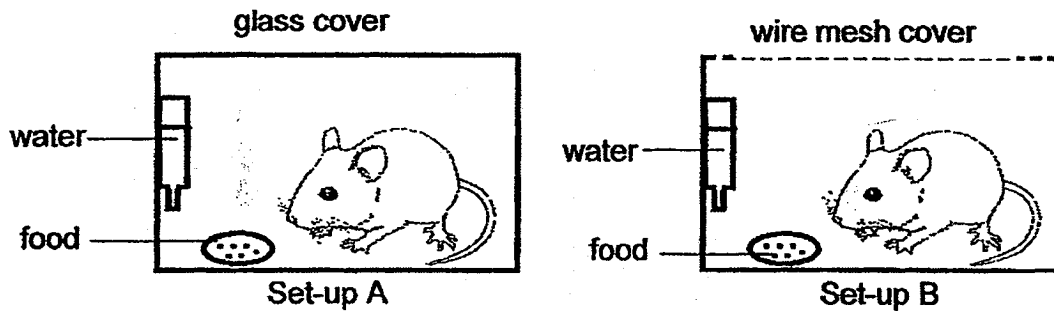
(c) Complete the table by writing A, B, C or D in the correct boxes provided. (2m)

	A, B, C or D?
Rose plant	
Bird's nest fern	

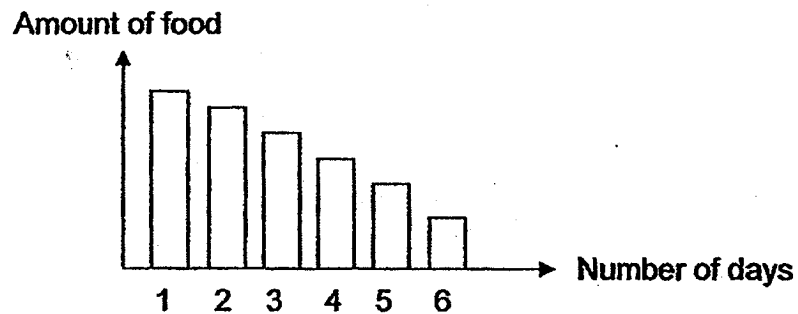




- 12 In an experiment, a mouse was kept in two separate containers as shown below.



- (a) The graph shows how the amount of food changes with time.

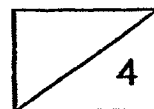


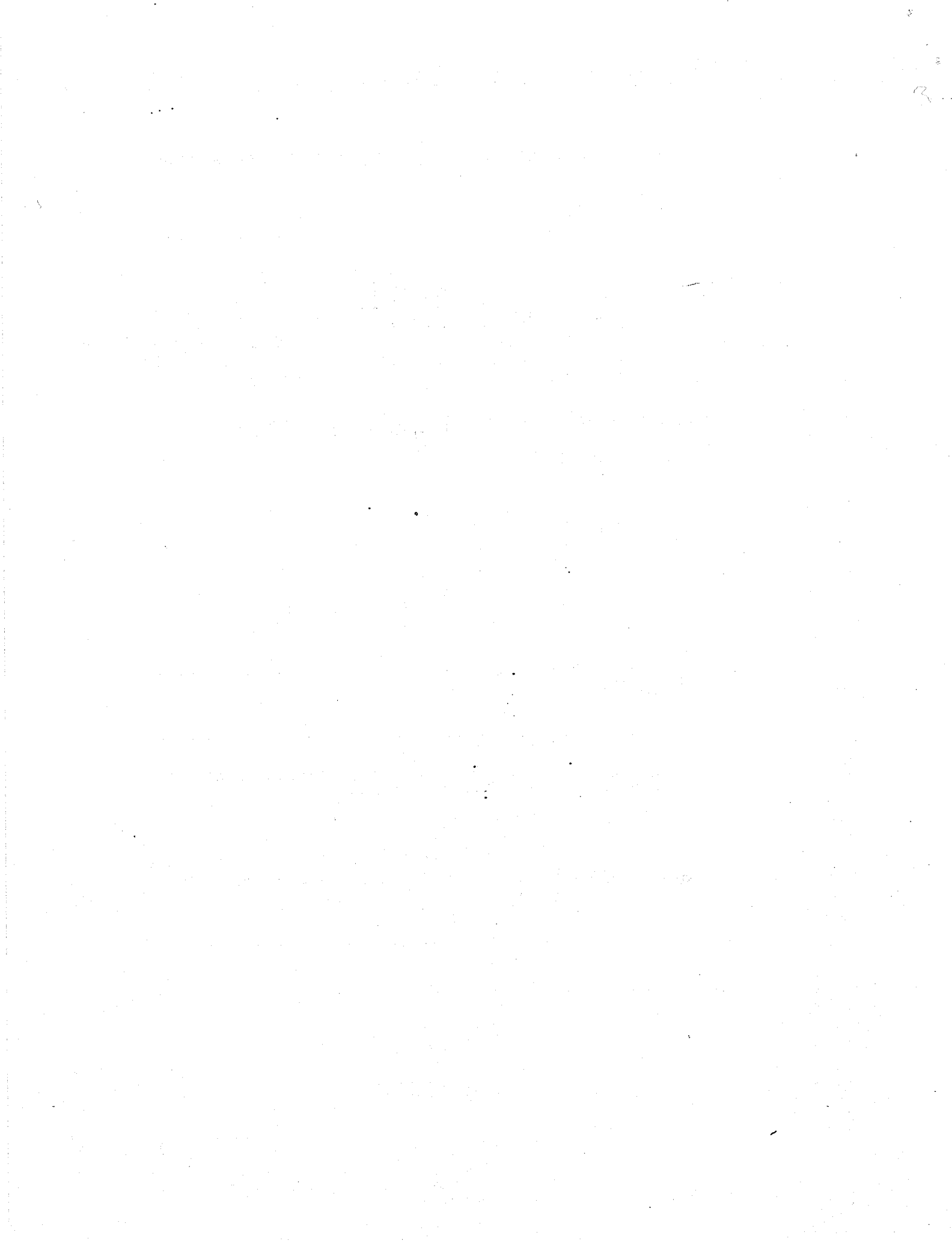
- (i) How does the amount of food change as the number of days pass? (1m)

- (ii) What characteristic of living things does the answer in part (ai) show? (1m)

- (b) In which set-up will the mouse die first? Explain your answer. (2m)

\*\*\*END OF PAPER\*\*\*





**EXAM PAPER 2018 (P3)**

**SCHOOL : RED SWASTIKA**

**SUBJECT : SCIENCE**

**TERM : CA1**

Q1	Q2	Q3	Q4	Q5	Q6	Q7	Q8	Q9
3	4	4	1	2	4	1	4	3

**Q10) a) The apple is the fruit.**

**b) Plant P bears fruits while plant Q does not.**

**c) Plant Q is a non-flowering plant.**

**Q11) a) Characteristics 1 : B can reproduce**

**Characteristics 2 : B is a non-flowering plant.**

**b) D is a non-living thing.**

**c) Rose plant – A**

**Bird's Nest Fern – C**

**Q12) a) i) The number of endured as the days passed.**

**ii) Living things need food to survive.**

**b) The mouse in set-up A will die as the mouse has insufficient air.**

