



RAFFLES GIRLS' PRIMARY SCHOOL
WEIGHTED ASSESSMENT 1
PRIMARY THREE

SCIENCE

Name: _____ ()

Date: ____ May 2024

Class: P3 _____

Total Time: 50 minutes


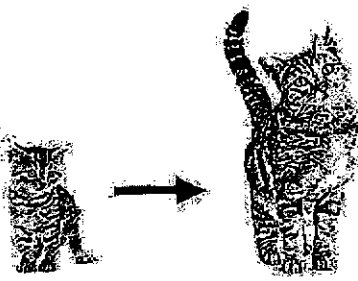
INSTRUCTIONS TO CANDIDATES

1. Write your name, class and index number in the spaces provided above.
2. Do not turn over this page until you are told to do so.
3. Follow all instructions carefully.
4. Answer all questions.
5. For questions 1 to 3, write your answers clearly in the spaces provided.
6. The number of marks is shown in brackets [] at the end of each question or part question.

| | |
|-------------------------|--|
| Your score out of 15 | |
| Parent's signature | |

1. The diagrams in the table show two observations of living things.

(a) State the characteristics of the living things as shown in the observations. [2]

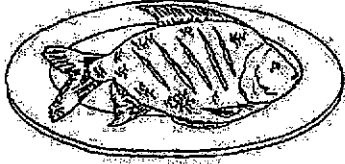

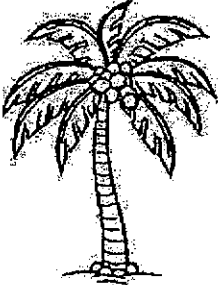
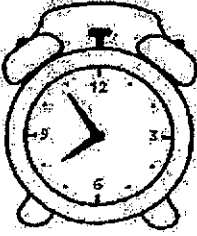
| | Observation | Characteristic of living things |
|------|---|---|
| (i) |  <p>Jayden covered his ears when he saw the lightning.</p> | <p>Living things _____</p> <p>_____</p> |
| (ii) |  <p>A kitten developed into a cat.</p> | <p>Living things _____</p> <p>_____</p> |

Continue on page 2

| | |
|--------|---|
| Score: | 2 |
|--------|---|

Continued from page 1

Study the following things, A, B, C and D, as shown in the diagrams.

| | |
|---|--|
|  <p>Fried fish</p> <p>A</p> |  <p>Bird</p> <p>B</p> |
|  <p>Coconut tree</p> <p>C</p> |  <p>Alarm clock</p> <p>D</p> |

(b) Classify the things, A, B, C and D, in the classification table by writing the letters, A, B, C and D, in the correct boxes. [2]

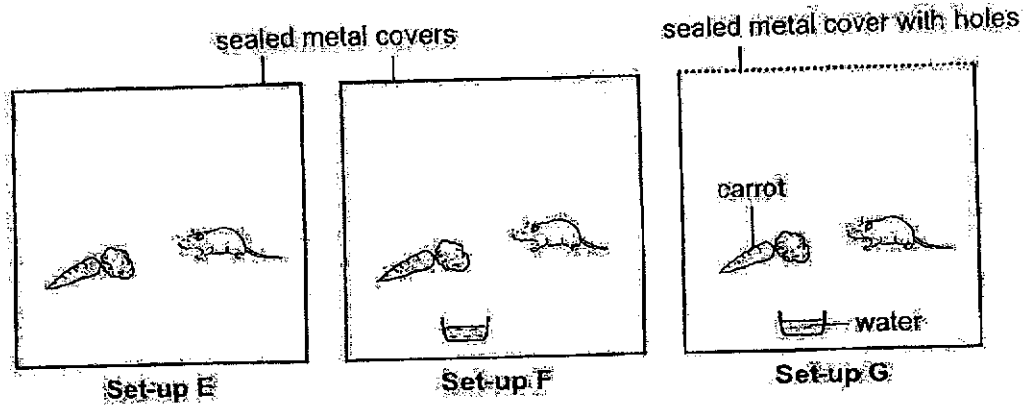
| Non-living things | Living things |
|-------------------|---------------|
| | |

Continue on page 3

| | |
|-------|---|
| Score | 2 |
|-------|---|

Continued from page 2

Siti prepared three set-ups, E, F and G, using identical containers each containing a rat and a carrot. She placed a bowl of water only in set-ups F and G as shown in the diagrams.

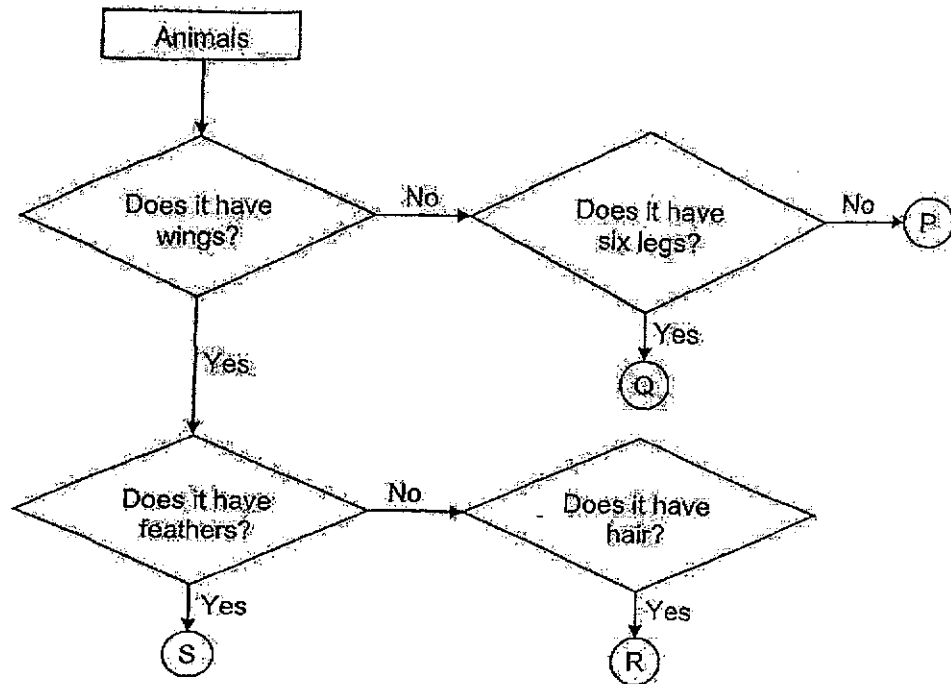


- (c) Based on the information above, which set-ups should she use to find out if living things need air to survive? [1]

Set-ups _____ and _____.

| | |
|-------|---|
| Score | 1 |
|-------|---|

2. The flowchart shows information on four animals P, Q, R and S.



Based on the information provided in the flowchart, answer the following questions:

- (a) Which animal, P, Q, R or S, best represents a mammal? Give a reason for your answer. [1]

- (b) State all the characteristics of animal S. [1]

- (c) Give an example of animal S. [1]

Continue on page 5

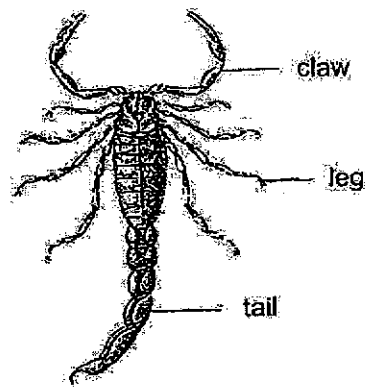
| | |
|-------|---|
| Score | 3 |
|-------|---|

Continued from page 4

(d) State a similarity between animal P and Q.

[1]

During an evening walk, Reena observed animal T in a park.



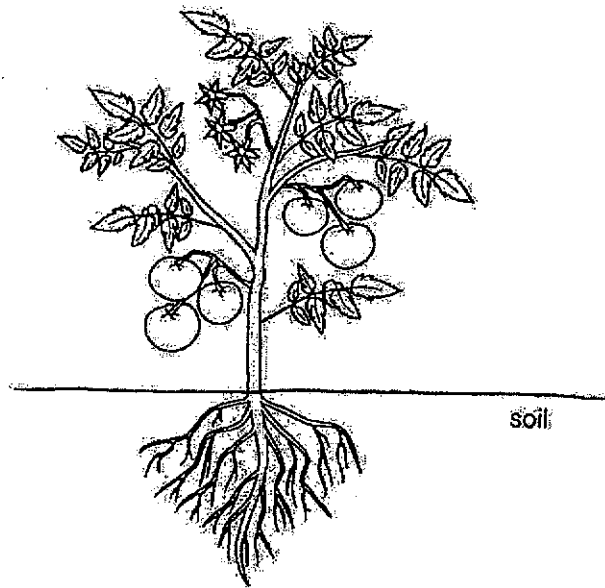
Animal T

(e) Reena concluded that animal T belongs to the same group as animal Q. Do you agree with Reena? Give a reason for your answer.

[1]

| | |
|-------|---|
| Score | 2 |
|-------|---|

3. The diagram shows plant X.



Plant X

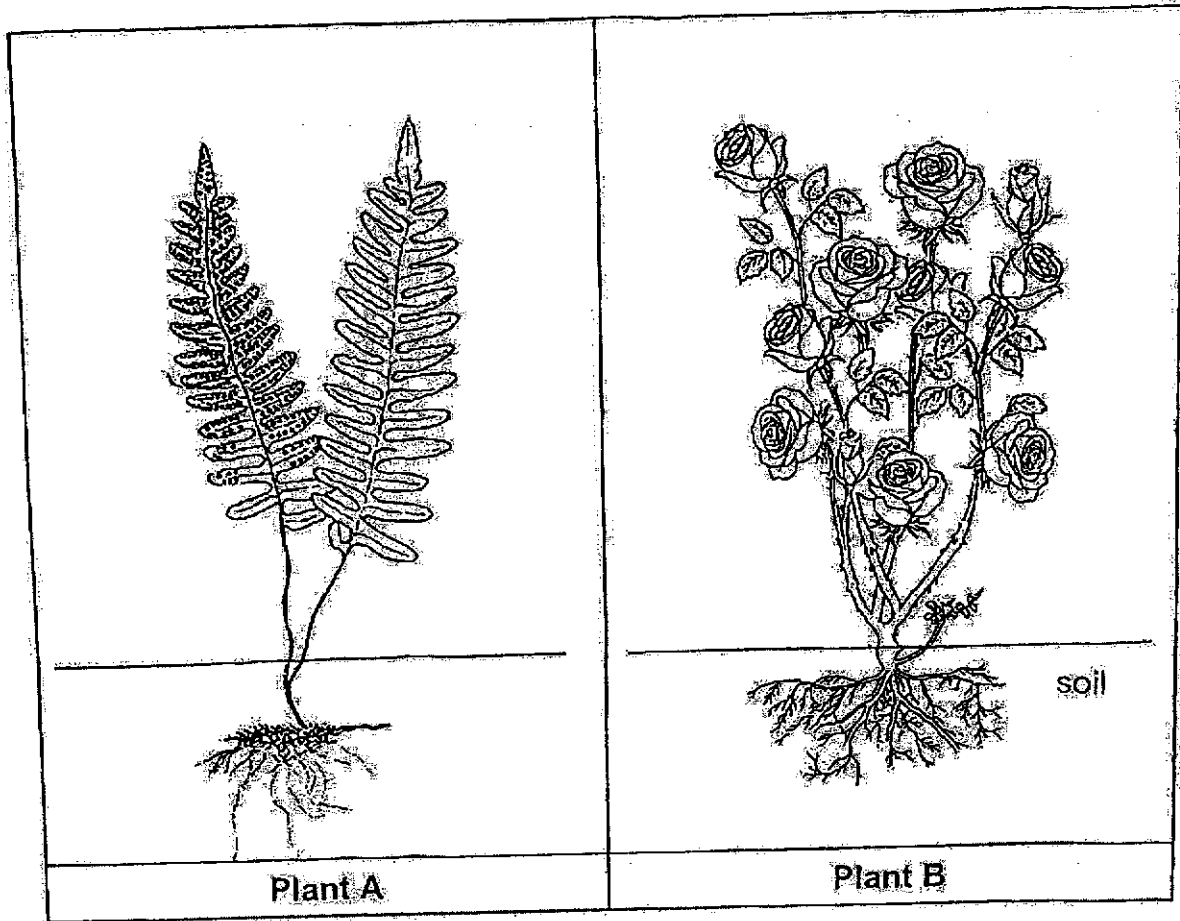
- (a) Based on the information on plant X above, put a tick (✓) in the correct box for each statement. [2]

| | Statement | True | False |
|-------|-----------------------------------|------|-------|
| (i) | It grows in water. | | |
| (ii) | It reproduces by seeds. | | |
| (iii) | It reproduces by spores. | | |
| (iv) | It has a stem to hold it upright. | | |

Continue on page 7

| | |
|-------|---|
| Score | 2 |
|-------|---|

P3 Science WA1 2024



(b) Based on your observation only, state one similarity and difference between plants A and B. (Do not compare size, colour and shape) [2]

| | |
|------------|---|
| Similarity | <hr style="border: none; border-top: 1px solid black;"/> <hr style="border: none; border-top: 1px solid black;"/> |
| Difference | <hr style="border: none; border-top: 1px solid black;"/> <hr style="border: none; border-top: 1px solid black;"/> |

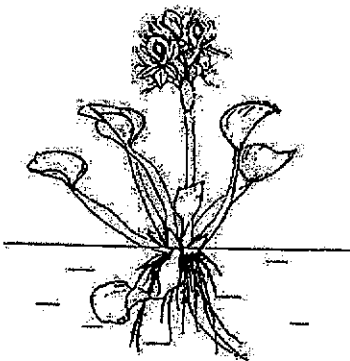
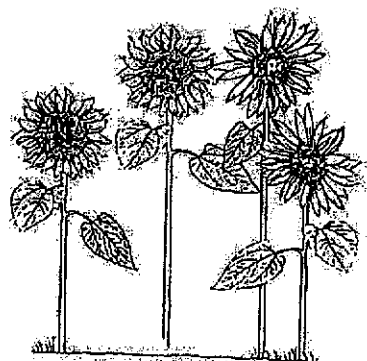
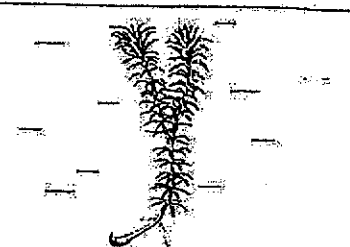
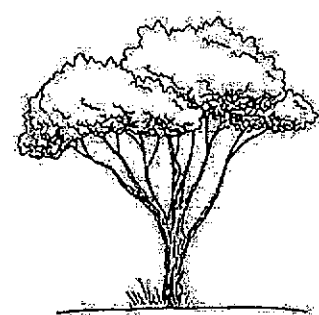
continue on page 8

| | |
|-------|---|
| Score | 2 |
|-------|---|

Continued from page 7

The following table shows the classification of plants E, F, G and H.

(c) Fill in the correct sub-headings in the classification chart shown. [1]

| Plants | |
|--|---|
| (i) _____ | (ii) _____ |
|  <p>Plant E</p> |  <p>Plant G</p> |
|  <p>Plant F</p> |  <p>Plant H</p> |

End of Paper

8

| | |
|--------|---|
| Score: | 1 |
|--------|---|

P3 Science WA1 2024

SCHOOL : RAFFLES GIRLS' SCHOOL
 LEVEL : PRIMARY 3
 SUBJECT : SCIENCE
 TERM : 2024 WA1

| | |
|-----|--|
| Q1) | a)i)Living things respond to changes ii)Living things grow b)A,D / C,B c)Set-ups F and G |
| Q2) | a) R, a mammals has and R has hair. b) S has wings and feathers. c) Pigeon d) They both don't have wings. e) I di not agree with Reena as animal Q has six legs but animal T has eight legs. |
| Q3) | a)i)False ii)True iii)False iv)True b)Similarity – Plant A and Plant B are both land plants. Difference – Plant A reproduces by spores but Plant B reproduces by seeds. c)i)water plants ii)land plants |

