

PEI CHUN PUBLIC SCHOOL
PRIMARY 3
TERM 1 WEIGHTED ASSESSMENT
SCIENCE

Time: 30 min

Name: _____ ()

Class: Primary 3 I() _____

Science Teacher: _____

Parent's Signature: _____

SECTION A	10
SECTION B	10
TOTAL	20

INSTRUCTIONS TO CANDIDATES

1. Do not turn over this page until you are told to do so.
2. Follow all instructions carefully.
3. Answer all questions.
4. Write your answers in this booklet.

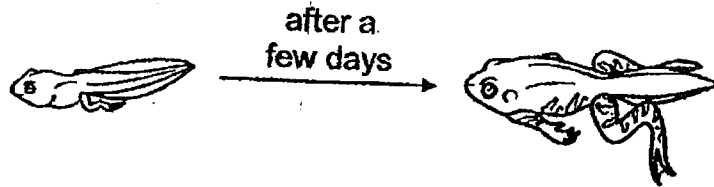
This booklet consists of 10 printed pages including the cover page.



Section A (5 × 2 marks)

For questions 1 to 5, choose the most suitable answer and write its number (1, 2, 3 or 4) in the brackets provided.

- 1 Raja found an animal in a pond. He observed how the animal changed over a few days.

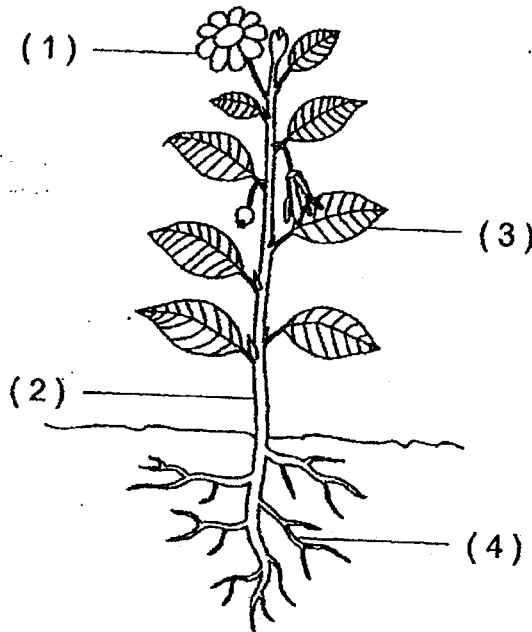


From his observation, Raja can conclude that the animal is a living thing because it can _____.

- (1) grow
- (2) move
- (3) respond
- (4) reproduce

()

- 2 The diagram below shows a plant.
Which part, (1), (2), (3) or (4), is the roots?

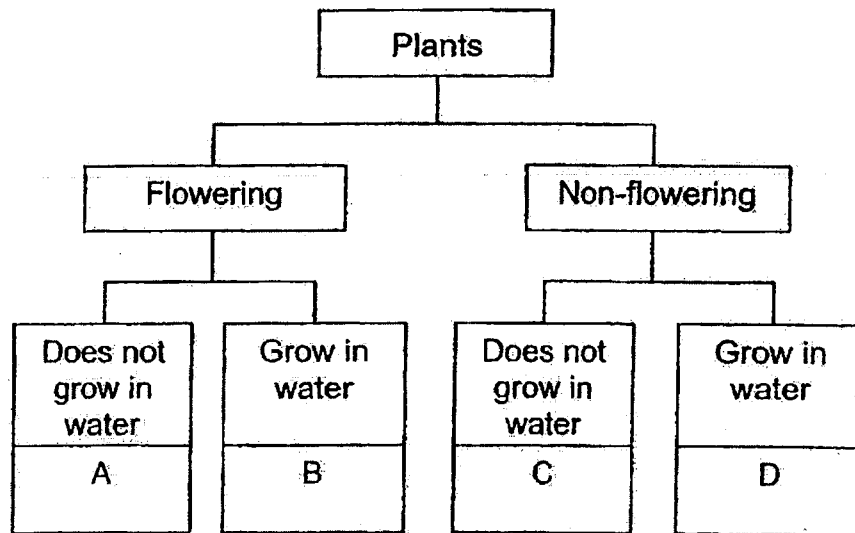


()

- 3 The table below gives some information on plant X, based on two characteristics. A tick (✓) shows that the plant has the characteristic.

Characteristics	Plant X
Produces flowers	✓
Grows on land	

From the information given, where does plant X belong in the following classification diagram?



- (1) A
- (2) B
- (3) C
- (4) D

()

4 The table below shows how some animals can be grouped..

	Has hair	Does not have hair
Has wings	K	L
Does not have wings	M	N

The diagram below shows a mammal.

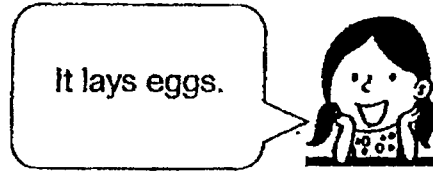


In which group of animals does this mammal belong?

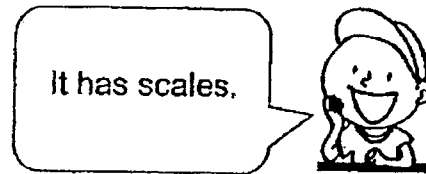
- (1) K
- (2) L
- (3) M
- (4) N

()

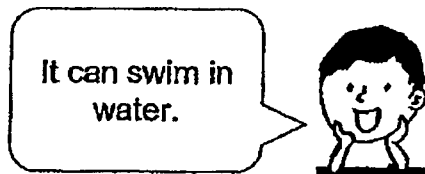
5 Four students made the following observations about an animal.



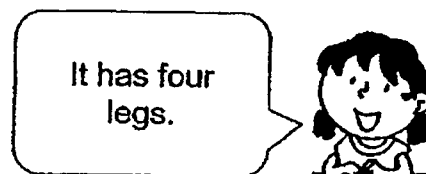
Anna



Bala



Carl



Dawn

Based on their observations, this animal can be classified as a/an

_____.

- (1) fish
- (2) insect
- (3) reptile
- (4) amphibian

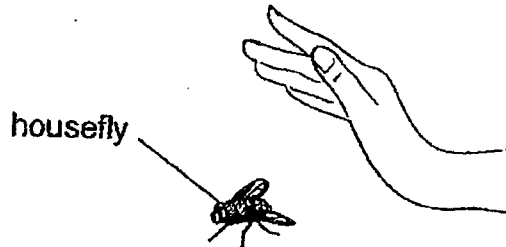
()

End of Section A

Section B (10 marks)

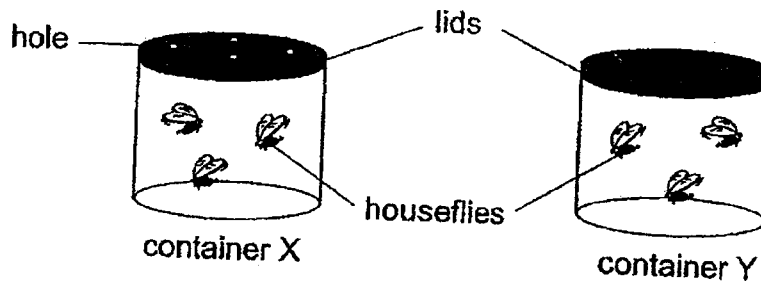
For questions 6 to 9, write your answers in the spaces provided.

6 Aini saw a housefly resting on the table.



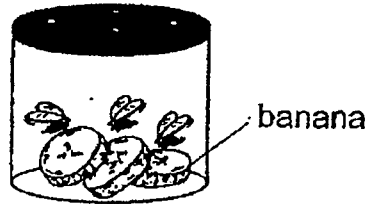
(a) Aini moved her hand near the housefly and the housefly flew away. What characteristic of living things did the housefly show? [1]

(b) Aini kept the same number of houseflies in two glass containers as shown below.



Explain why the houseflies in container X could stay alive longer than those in container Y. [1]





(c) Aini added some pieces of banana into container X.



Explain how this would help the houseflies to stay alive. [1]

SCORE	
-------	--

7 Joanne grouped some living things as shown in the table below.

Living Things	
K	L
 rabbit's foot fern	 dandelion
 water moss fern	 hibiscus

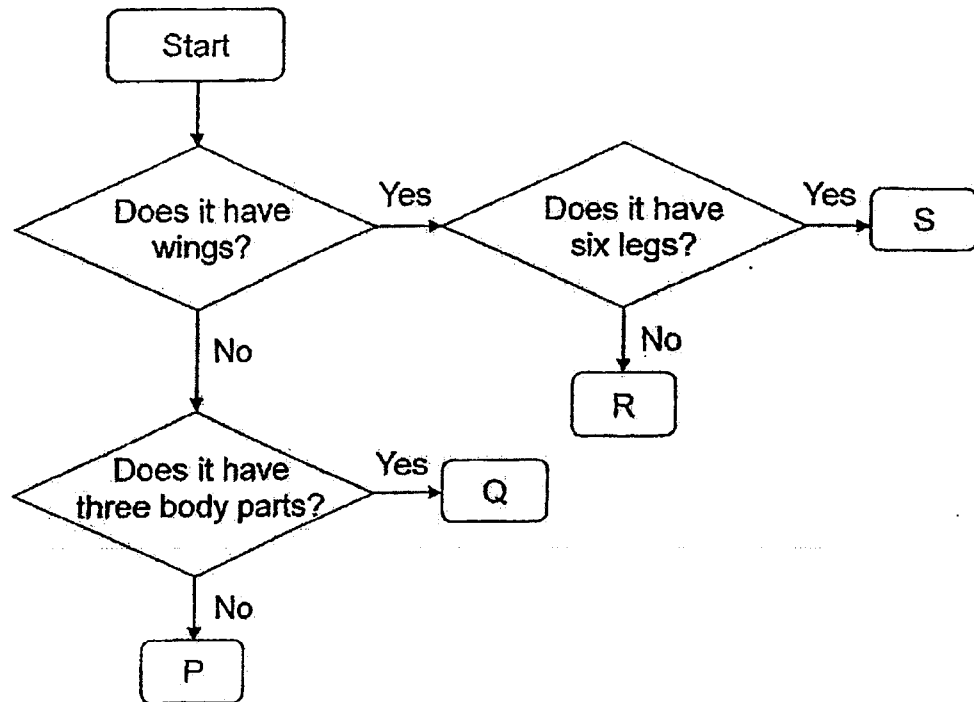
Choose the correct phrases from the box below to give suitable headings for K and L. [2]

Grow on land	Grow in water
Can produce fruits	Can make its own food
Cannot produce fruits	Cannot make its own food

K: _____

L: _____

- 8 Study the chart below. Letters P, Q, R and S represent four different animals.

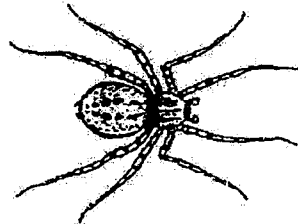


Use the information in the chart to answer the following questions.

- (a) State a similarity between animals P and Q. [1]

- (b) Which of these animals, P, Q, R or S, is/are insects? [1]

- (c) The diagram below shows an animal.



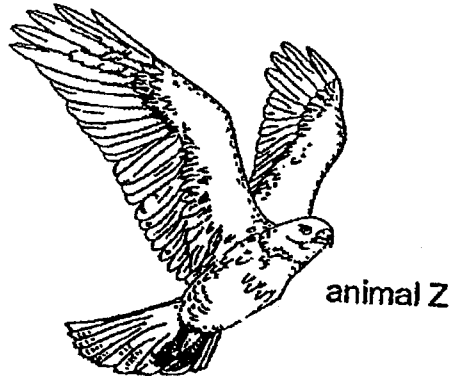
Match the animal to the correct letter (P, Q, R or S) in the chart.

[1]

It is animal _____.

SCORE	
-------	--

9 Jim observed animal Z and concluded that it is a bird.



(a) Tick (✓) one of the following characteristics of animal Z that allowed Jim to conclude that it is a bird. [1]

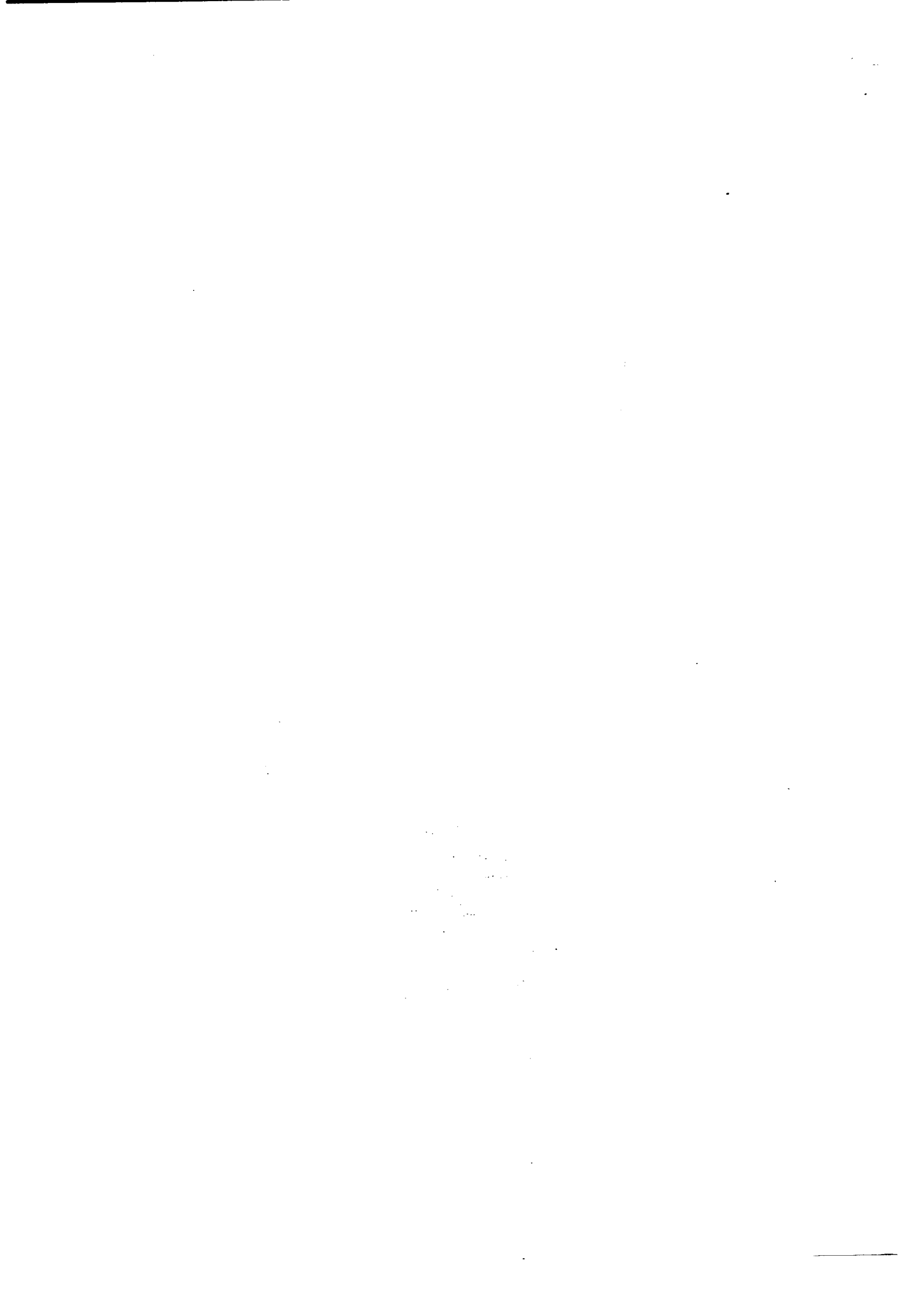
It can fly.

It has wings.

It has feathers.

(b) State how animal Z reproduces. [1]

End of Section B



SCHOOL : PEI CHUN PUBLIC SCHOOL
 LEVEL : PRIMARY 3
 SUBJECT : SCIENCE
 TERM : TERM 1 WA

CONTACT :

SECTION A

Q1	Q2	Q3	Q4	Q5					
1	4	2	1	3					

SECTION B

Q6)	<p>(a) The housefly responds to changes around it.</p> <p>(b) The house flies in Container X had enough air to stay alive but the house flies in Container Y did not.</p> <p>(c) The house flies had food to stay alive.</p>
Q7)	<p>K : Cannot produce fruits</p> <p>L : Can produce food</p>
Q8)	<p>(a) Both P and Q do not have wings</p> <p>(b) Q and S are insects</p> <p>(c) It is animal P</p>
Q9)	<p>(a) Tick " It has feathers"</p> <p>(b) Animal Z lay eggs.</p>

