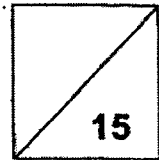


**Henry Park Primary School
Primary 3 Science
Weighted Assessment 2**



Name: _____ ()

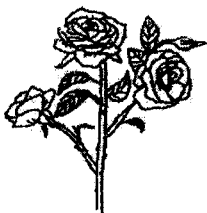
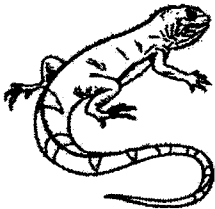

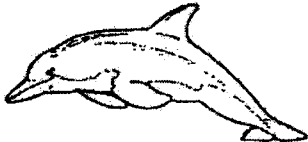
Class: Primary 3 _____

Parent's Signature: _____

Question 1

The pictures show some living things. Match the living things to the way they reproduce by ticking (✓) the correct boxes in the table below.

[2]

		Living Things			
		How they reproduce			
		Giving birth to young alive	Lay eggs	By seeds	By spores
a)					
b)					
c)					
d)					



Question 2A

You are given a packet of buttons. Observe the buttons carefully and answer the questions.

The buttons are labelled A, B, C, D, E, F, G and H.

State two characteristics of the buttons. *An example has been done for you.*

Characteristic 1: *They are of different colours.*

Characteristic 2: *Some are smooth and some are rough.*

Other than the characteristics stated above, write down two other characteristics that you can observe. [2]

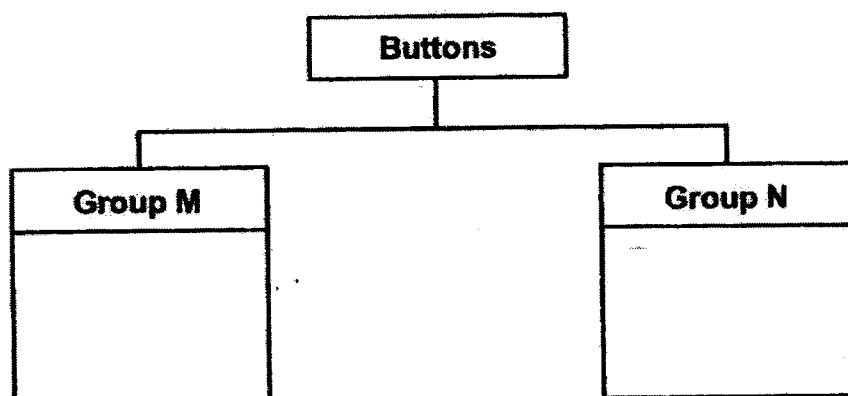
Characteristic 3: _____

Characteristic 4: _____

Question 2B

Classify the buttons into two groups, M and N.

Write down the letters (A, B, C, D, E, F, G and H) in the boxes below to show how you have classified the buttons. (*Do not compare the size of the buttons.*) [1]



Based on your classification, write down suitable headings for Groups M and N. [1]

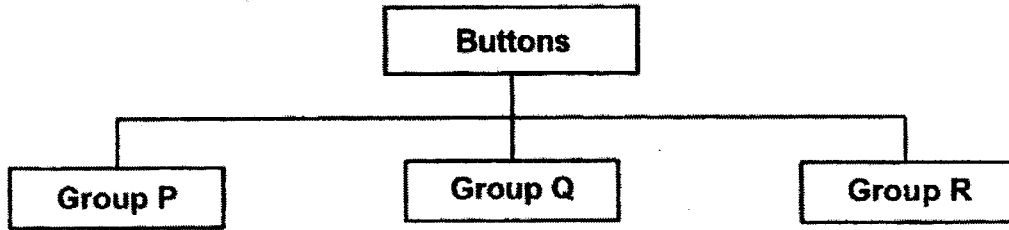
i) Group M: _____

ii) Group N: _____



Question 2C

Now, classify the buttons into three groups, P, Q and R, as shown below.



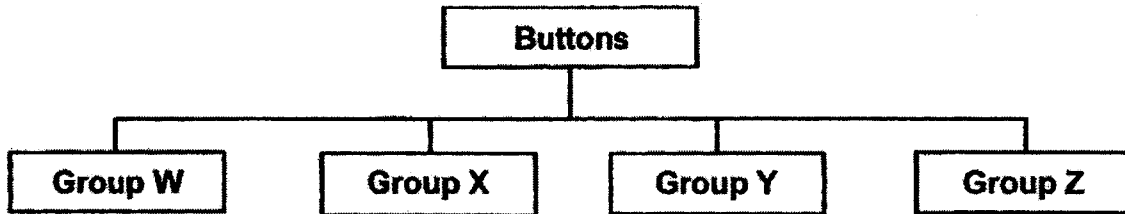
Based on your classification, write down suitable headings for groups P, Q and R.
(Do not compare the size of the buttons.)

[1]

- i) Group P: _____
- ii) Group Q: _____
- iii) Group R: _____

Question 2D

Now, classify the buttons into four groups, W, X, Y and Z, as shown below.



- i) Based on your classification above, state one property that you used to classify the buttons into Groups W, X, Y and Z.

[1]

Now, raise your hand and ask your teacher for Button J.

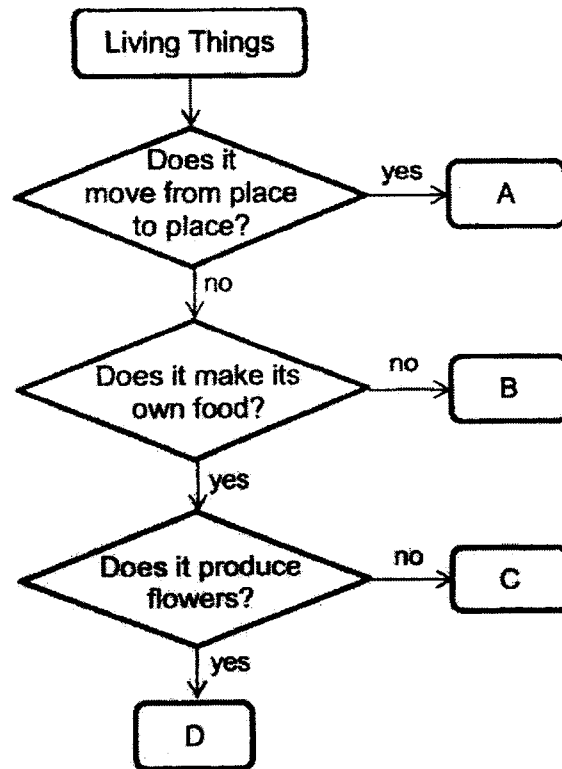
- ii) Observe Button J. Are you able to classify Button J into groups W, X, Y or Z? Explain your answer.

[1]



Question 3

Study the chart below.



Based on the chart above, which of the following groups do organisms E and F belong to? Write the letter A, B, C, or D in the correct boxes. [2]



Organism E



Organism F

Question 4

Fill in the blanks in the classification chart based on the characteristics observed among animals in each animal group. An example has been done for you. [4]

Characteristics	Animal Groups		
	Amphibians	Fish	Birds
a) Where they live			<i>Lives on land</i>
b) Outer covering	<i>Has moist skin</i>		

Weighted Assessment 2

Q1	(a) By seeds (b) Lay eggs (c) By spores (d) Giving birth to young alive																
Q2	Practical																
Q3	(a) D (b) A																
Q4	<p>(a) and (b)</p> <table border="1"> <thead> <tr> <th data-bbox="271 750 510 795">Characteristics</th> <th colspan="3" data-bbox="510 750 1332 795">Animal Groups</th> </tr> <tr> <td></td> <th data-bbox="510 795 782 840">Amphibians</th> <th data-bbox="782 795 1045 840">Fish</th> <th data-bbox="1045 795 1332 840">Birds</th> </tr> </thead> <tbody> <tr> <td data-bbox="271 840 510 907">Where they live</td> <td data-bbox="510 840 782 907">Lives on land and in water</td> <td data-bbox="782 840 1045 907">Lives in water</td> <td data-bbox="1045 840 1332 907">Lives on land</td> </tr> <tr> <td data-bbox="271 907 510 996">Outer covering</td> <td data-bbox="510 907 782 996">has moist skins</td> <td data-bbox="782 907 1045 996">has scales</td> <td data-bbox="1045 907 1332 996">has feathers</td> </tr> </tbody> </table>	Characteristics	Animal Groups				Amphibians	Fish	Birds	Where they live	Lives on land and in water	Lives in water	Lives on land	Outer covering	has moist skins	has scales	has feathers
Characteristics	Animal Groups																
	Amphibians	Fish	Birds														
Where they live	Lives on land and in water	Lives in water	Lives on land														
Outer covering	has moist skins	has scales	has feathers														

