



PRIMARY 3 WEIGHTED ASSESSMENT 1

Name : _____ ()

Date: 23 April

Class : Primary 3 ()

Duration: 30 minutes

Parent's Signature: _____

SCIENCE

INSTRUCTIONS TO CANDIDATES

1. Write your name, class and register number.
2. Do not turn over this page until you are told to do so.
3. Follow all instructions carefully.
4. Answer all questions.
5. Write your answers in this booklet.

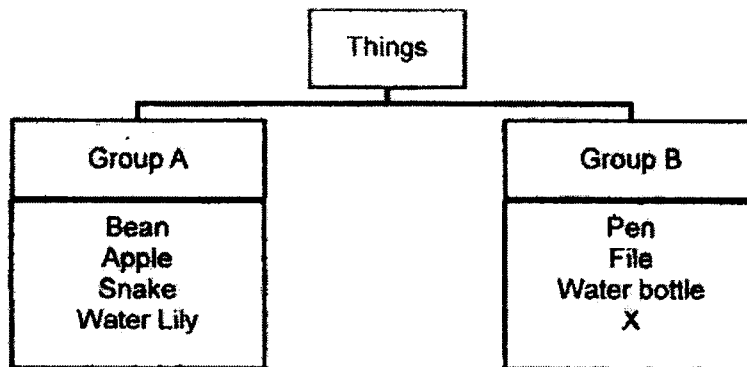
Section A	12
Section B	8
Total	20

Booklet A (6 x 2 marks)

For each question from 1 to 6, four options are given. One of them is the correct answer. Make your choice (1, 2, 3 or 4) and write the answer in the brackets provided.

(12 marks)

1. Study the classification chart below.

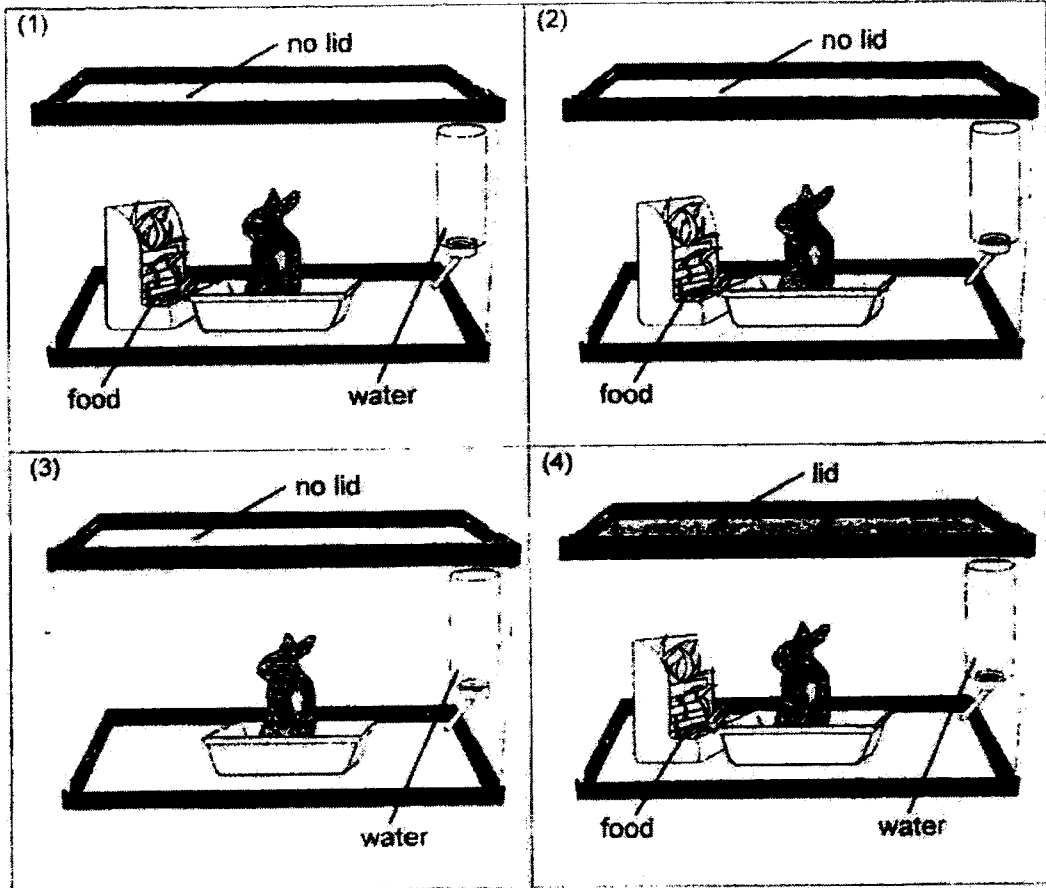


Which of the following best represents X?

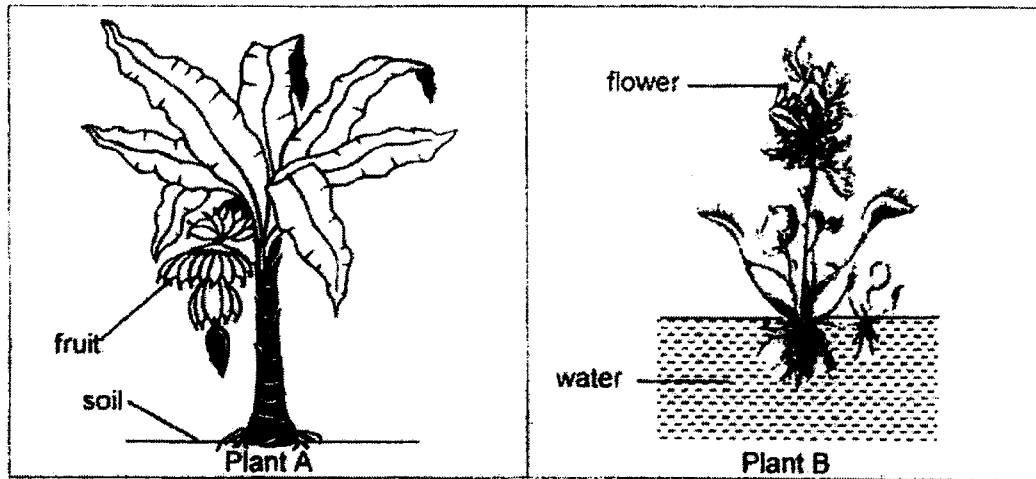
- (1) desk
- (2) goldfish
- (3) mango
- (4) sunflower

()

2. Sally wanted to place a rabbit in one of the 4 different containers as shown in the diagrams below. In which container would the rabbit live the longest?



3. Study the diagrams below.



How are plant A and plant B different?

- (1) Plant A has roots but Plant B does not.
- (2) Plant B has leaves but Plant A does not.
- (3) Plant B grows in water but Plant A does not.
- (4) Plant A needs sunlight to make food but Plant B does not. ()

4. Study the table below.

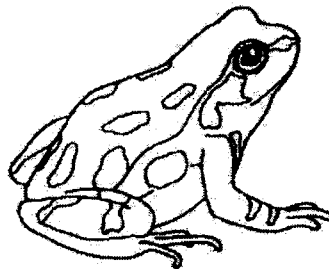
A	B
Moss Bird's nest fern Rabbit's foot fern	Mango tree Apple tree Hibiscus plant

How are the living things classified?

	A	B
(1)	Water plants	Land plants
(2)	Non – flowering plants	Flowering plants
(3)	Reproduce from seeds	Reproduce from spores
(4)	Able to make their own food	Unable to make their own food

()

5. Look at the picture of an amphibian below.

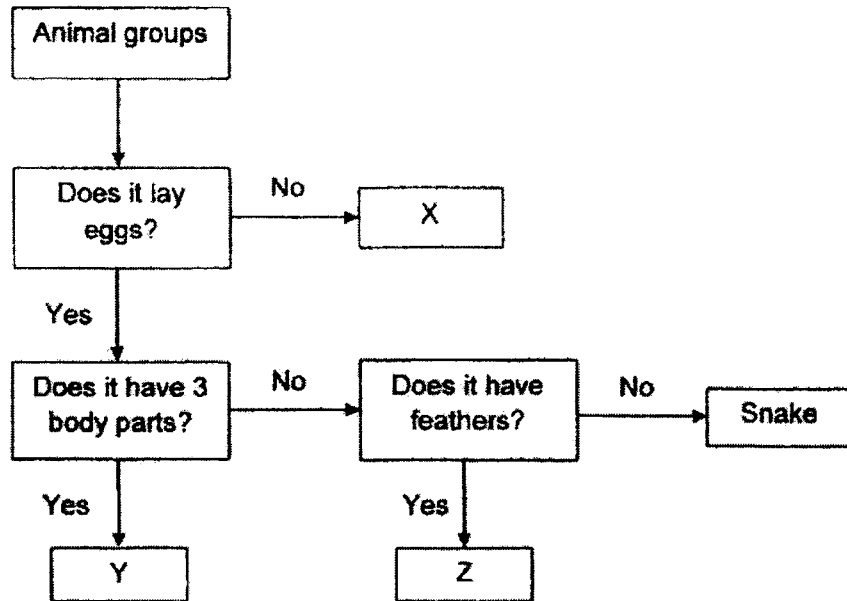


Which of the following is **definitely** true?

- (1) It has moist skin.
- (2) It has three body parts.
- (3) It breathes through gills.
- (4) It gives birth to its young.

()

6. Study the flowchart below.



Which of the following can X, Y and Z be?

	X	Y	Z
(1)	Amphibian	Reptile	Bird
(2)	Mammal	Amphibian	Reptile
(3)	Insect	Fish	Mammal
(4)	Mammal	Insect	Bird

()

Booklet B (4 x 2marks)

For questions 7 to 10, write your answers clearly in this booklet.

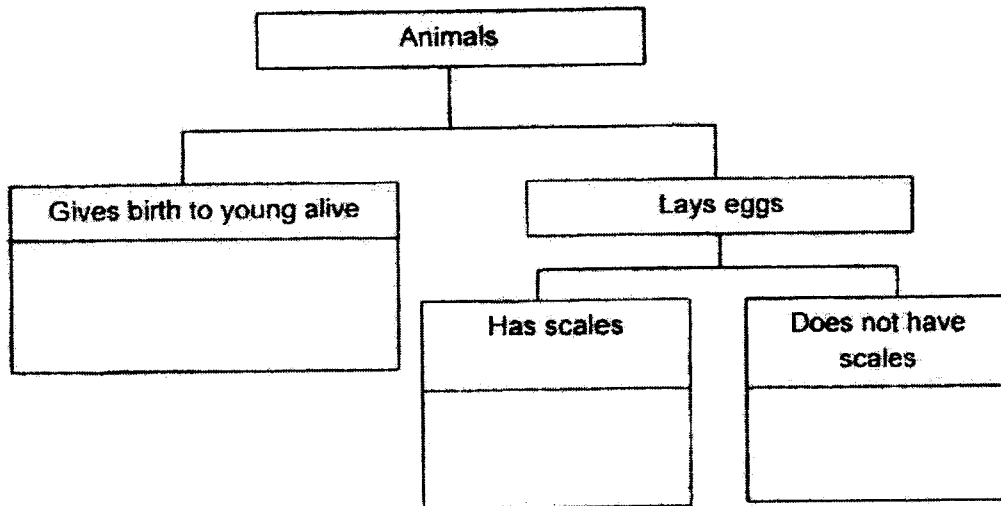
The number of marks available is shown in brackets [] at the end of each question or part question.

(8 marks)

7. The characteristics of the animals A, B and C are listed in the table below.

Characteristics	A	B	C
Gives birth to young alive	√	x	x
Has scales	x	x	√

(a) Use the information above to complete the classification chart below by writing the letters, A, B and C in the correct boxes. [1]



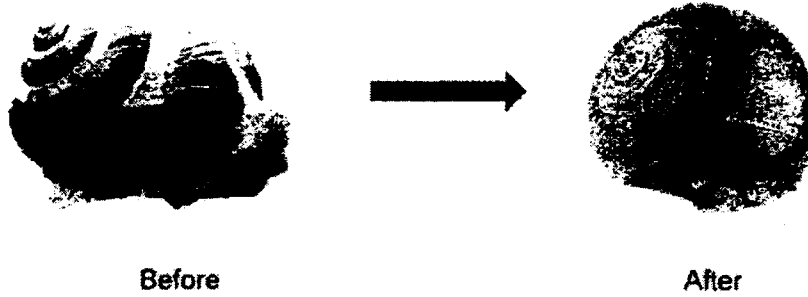
(b) Based on the information in the table above, can animal A be a mammal? Give a reason for your answer. [1]

(*Circle the correct answer and state your reason by comparing Animal A and a mammal)

Animal A can/cannot be a mammal because Animal A _____

Score	2
-------	---

8. Lucas observes a snail in his garden. When Lucas uses a stick to poke the snail, it goes into its shell.



- (a) Which characteristic of living thing is shown by the snail above? [1]

- (b) State another characteristic of living thing. [1]

Score	2
-------	---

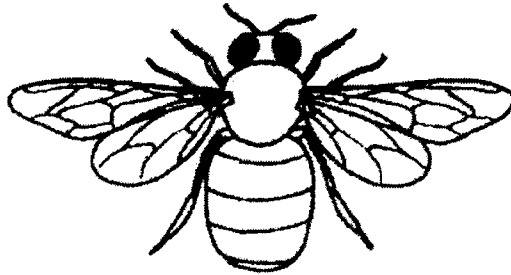
9. Circle 'True' or 'False' for each of the following statements.

[2]

a)	Birds have feathers and 2 legs.	True / False
b)	Mammals are the only animals that have hair.	True / False
c)	Fishes have lungs to help them breathe in water.	True False
d)	Reptiles have dry skin covered with scales.	True / False

Score	2
-------	---

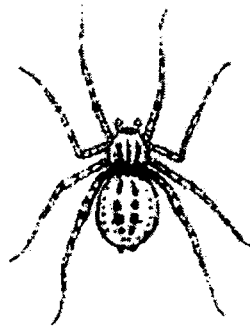
10. The picture below shows Animal X.



(a) Which animal group does Animal X belong to?
Give a reason for your answer.

[1]

The picture below shows a spider.



(b) Is the spider an insect? Give a reason for your answer.

[1]

(*Circle the correct answer and state your reason by comparing the spider to an insect)

The spider is / is not an insect because _____

Score	2
-------	---

ANSWER KEY

LEVEL : Primary 3
SCHOOL : Tao Nan School
SUBJECT : SCIENCE
TERM : Weighted Assessment 1

Weighted Assessment 1

Q1	1	Q2	1	Q3	3	Q4	2	Q5	1
Q6	4								

Q7	<p>(a)</p> <p>(b) Animal A can be a mammal because animal A gives birth to its young alive like all mammals do.</p>
Q8	<p>(a) Living things respond to changes around them</p> <p>(b) Living things grow.</p>
Q9	<p>(a) True</p> <p>(b) True</p> <p>(c) False</p> <p>(d) True</p>
Q10	<p>(a) Animal X belongs to the insect group. It has six legs.</p> <p>(b) The spider is not an insect because it has eight legs but an insect has six legs.</p>

1
END

