



Nan Hua Primary School  
Primary 3 Science  
Term 1 Weighted Assessment 2021

Marks	
Section A:	/10
Section B:	/10
<b>Total:</b>	<b>/20</b>

Name: \_\_\_\_\_ ( )

Class: Primary 3/ \_\_\_\_\_

Date: \_\_\_\_\_

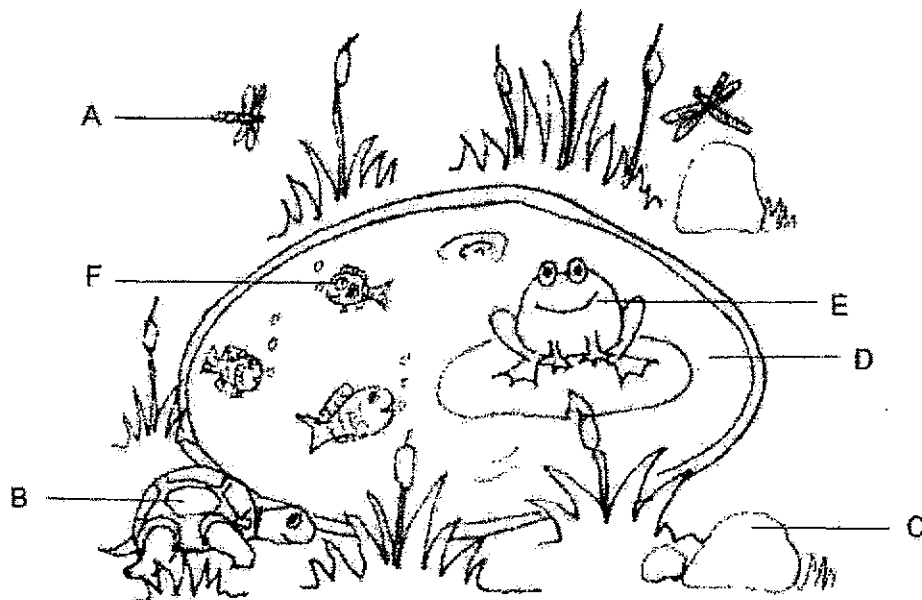
Duration: 30 minutes

Answer all questions.

**Section A: (5 x 2 marks = 10 marks)**

For each question from 1 to 5, four options are given. One of them is the correct answer. Make your choice (1, 2, 3 or 4) and write your answer in the brackets provided.

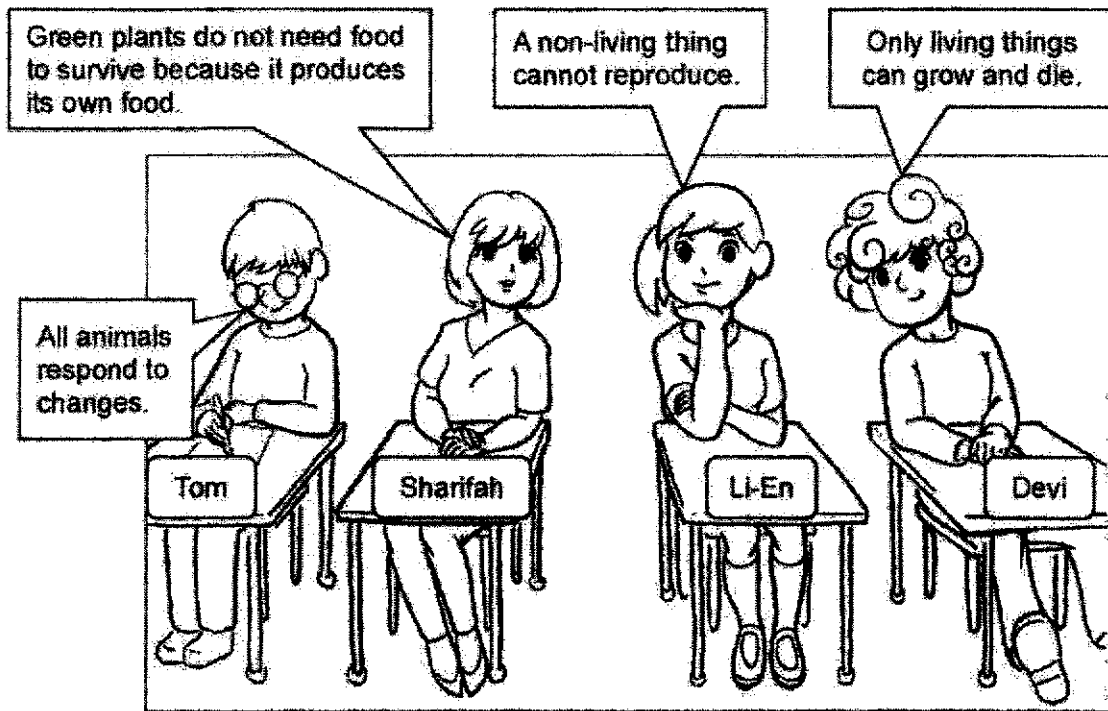
1 The picture below shows 6 things, A to F.



Which of the following shows the correct classification of things A to F?

	Living things	Non-living things
(1)	E and F	A, B, C and D
(2)	A, B and C	D, E and F
(3)	A, B, E and F	C and D
(4)	B, D, E and F	A and C

2 Four pupils made the following statements about living and non-living things.

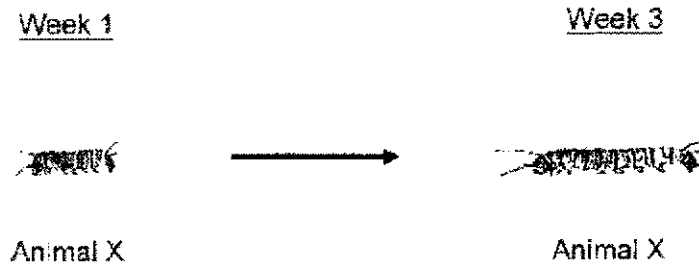


Which pupil has made a wrong statement?

- (1) Tom
- (2) Devi
- (3) Li-En
- (4) Sharifah

( )

- 3 Bala fed animal X with fresh leaves daily and recorded down its length over 3 weeks.



Which of the following tables correctly shows the growth of animal X over 3 weeks?

(1)

Week	Length
1	4 cm
2	3 cm
3	2 cm

(2)

Week	Length
1	2 cm
2	3 cm
3	4 cm

(3)

Week	Length
1	3 cm
2	3 cm
3	3 cm

(4)

Week	Length
1	4 cm
2	3 cm
3	4 cm

( )

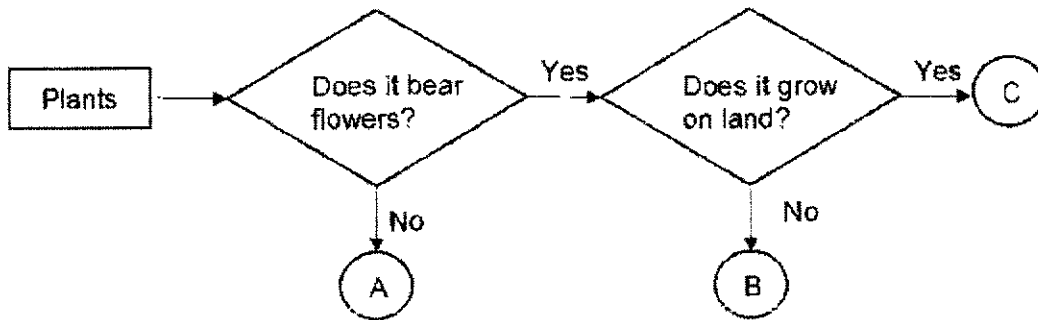
4 Animal E has the following characteristics:

- Has wings
- Has 3 body parts
- Has hard outer body covering

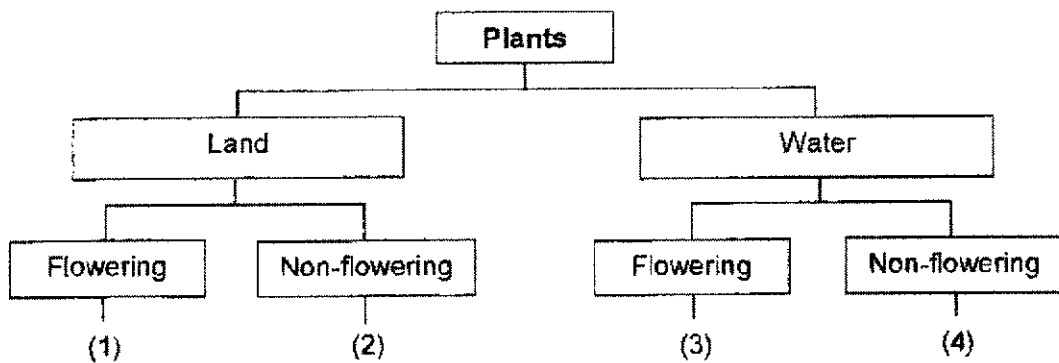
Based on the information above, which animal group does animal E belong to?

- (1) Insects  
 (2) Reptiles  
 (3) Mammals  
 (4) Amphibians ( )

5 Study the flowchart below.



Which number, 1, 2, 3 or 4, from the classification diagram below, represents plant B?



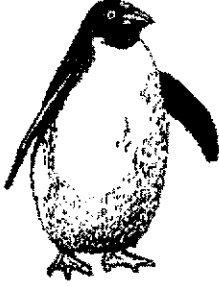


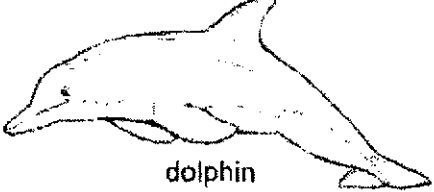
( )

Total marks for section A	10
---------------------------	----

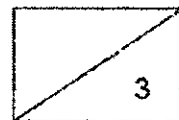
**Section B: Structured questions (10m)**

For questions 6 to 8, write your answers in the space provided. The number of marks available is shown in brackets [ ] at the end of each question or part question.

6 Study the classification table below.

P	Q
 <p data-bbox="459 772 566 801">penguin</p>	 <p data-bbox="1209 555 1305 584">squirrel</p>  <p data-bbox="1125 907 1168 936">bat</p>  <p data-bbox="1013 1153 1109 1182">dolphin</p>

- (a) The animal in group P reproduces by \_\_\_\_\_ but the animals in group Q reproduce by \_\_\_\_\_. [1m]
- (b) Wati regrouped the 4 animals based on **another** characteristic **observed** from the diagram. She moved the bat over to group P. Explain why. [1m]
- 
- (c) Wati wanted to classify a frog into group Q based on its breathing method. Do you agree with her? Explain your answer. [1m]
- 



7 Study the table below. A tick (✓) means the animal has that characteristic and a cross (×) means it does not have that characteristic.

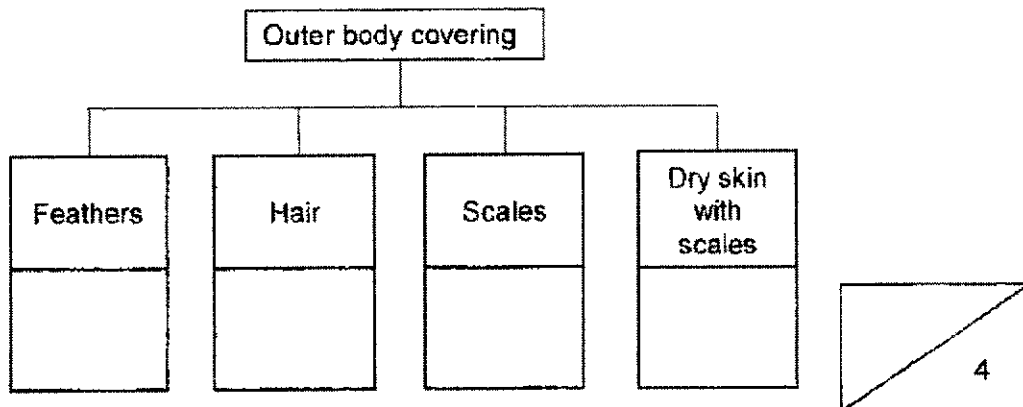
Animal	Lays eggs	Has a beak	Breathe through gills
A	✓	×	✓
B	✓	×	×
C	✓	✓	×
D	×	×	×

(a) Based only on the information from the table, state a difference between animal B and C. [1m]

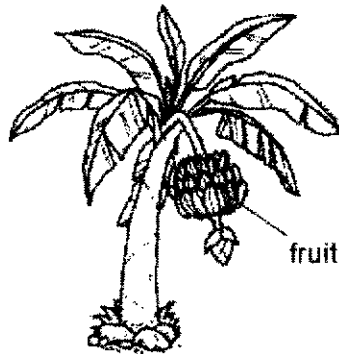
(b) Based on the table above, place the letters, A, B, C and D, into the correct animal group. [2m]

Animal	Animal group
	fish
	birds
	reptiles
	mammals

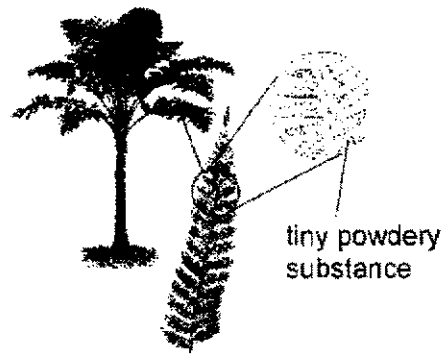
(c) Meiling wanted to regroup the four animals based on their outer body covering. Place the letters, A, B, C and D, into the correct boxes below. [1m]



8 Study the pictures of the two plants below.



Banana plant



Tree Fern

(a) Based on the diagrams above, state one observable **similarity** between the two plants. [1m]

---



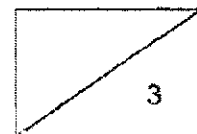
---

(b) Darren noticed that the tree fern has tiny powdery substances on the underside of the leaves shown in the diagram above. What are these substances? [1m]

---

(c) Match the two plants to the correct group. [1m]

- |              |   |                       |
|--------------|---|-----------------------|
| Banana plant | ● | ● non-flowering plant |
| Tree fern    | ● | ● flowering plant     |



- End of paper -





**SCHOOL** : NANHUA PRIMARY SCHOOL  
**LEVEL** : PRIMARY 3  
**SUBJECT** : SCIENCE  
**TERM** : NHPS P3 Science Term 1 Weighted Assessment

**SECTION A**

3	4	2	1	3					

**SECTION B**

Q6	<p>a) laying eggs; give birth  b) both have wings  c) Yes. Both breathe through lungs.  Or No. A frog breathes through its moist skin in water but mammals do not.</p>																		
Q7	<p>a) Animal C has a beak but animal B does not have.  b)</p> <table border="1"> <thead> <tr> <th>Animal</th> <th>Animal Group</th> </tr> </thead> <tbody> <tr> <td>A</td> <td>Fish</td> </tr> <tr> <td>C</td> <td>Birds</td> </tr> <tr> <td>B</td> <td>Reptiles</td> </tr> <tr> <td>D</td> <td>Mammals</td> </tr> </tbody> </table> <p>c)</p> <table border="1"> <thead> <tr> <th>Feathers</th> <th>Hair</th> <th>Scales</th> <th>Dry skin with scales</th> </tr> </thead> <tbody> <tr> <td>C</td> <td>D</td> <td>A</td> <td>B</td> </tr> </tbody> </table>	Animal	Animal Group	A	Fish	C	Birds	B	Reptiles	D	Mammals	Feathers	Hair	Scales	Dry skin with scales	C	D	A	B
Animal	Animal Group																		
A	Fish																		
C	Birds																		
B	Reptiles																		
D	Mammals																		
Feathers	Hair	Scales	Dry skin with scales																
C	D	A	B																
Q8	<p>a) Both have a stem/strong stem  Both have leaves/branches  b) They are spores / spore bags.  c) Banana <math>\swarrow</math> non-flowering plant  Tree fern <math>\nwarrow</math> flowering plant</p>																		

