

Harry Park Primary School  
Primary 3 Science  
Weighted Assessment 1 2021

Name: \_\_\_\_\_ ( ) Class: 3 \_\_\_\_\_ Marks: \_\_\_\_\_ / 15

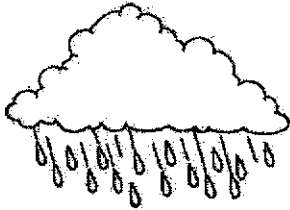
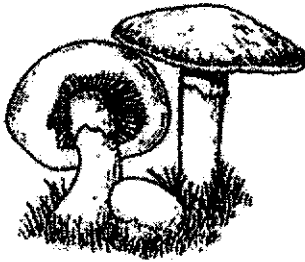
Short Answer Questions (15 marks)

Duration: 30 minutes

Read and answer questions 1 to 7 carefully.

1. Draw lines to match all the things to the correct groups.

[2]



Living thing



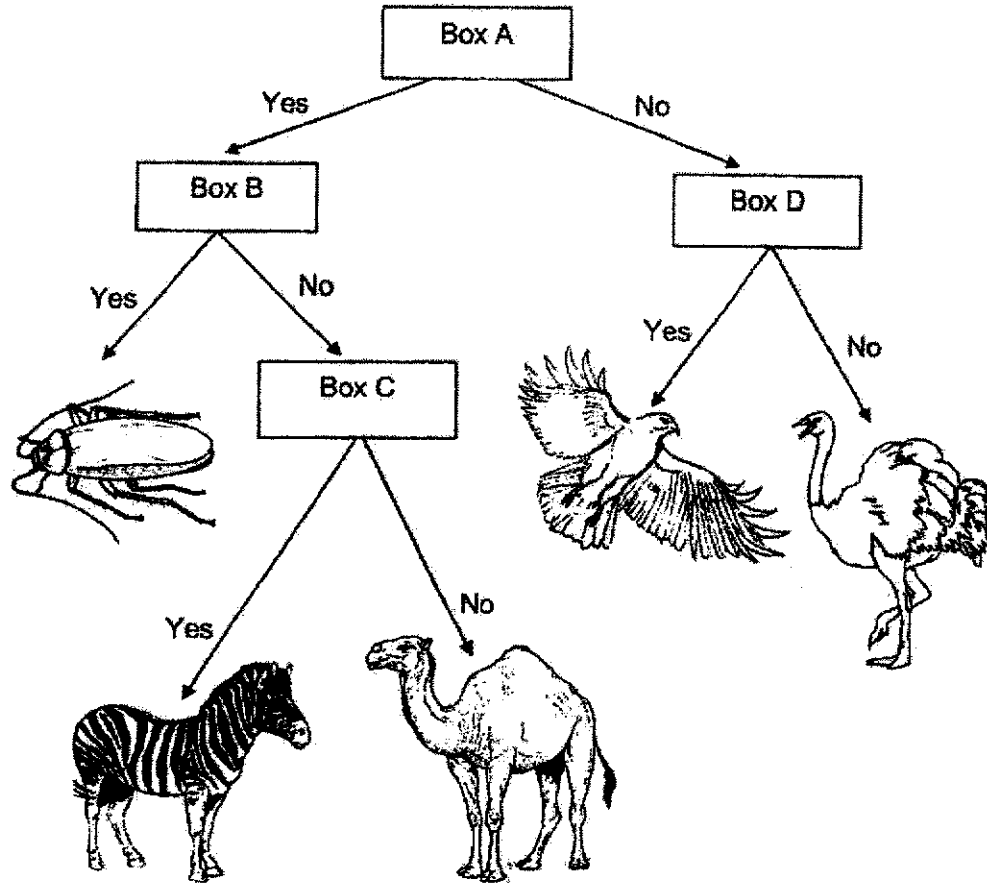
Non - living thing





2. Mina and Zoe grouped some animals using the chart shown below.

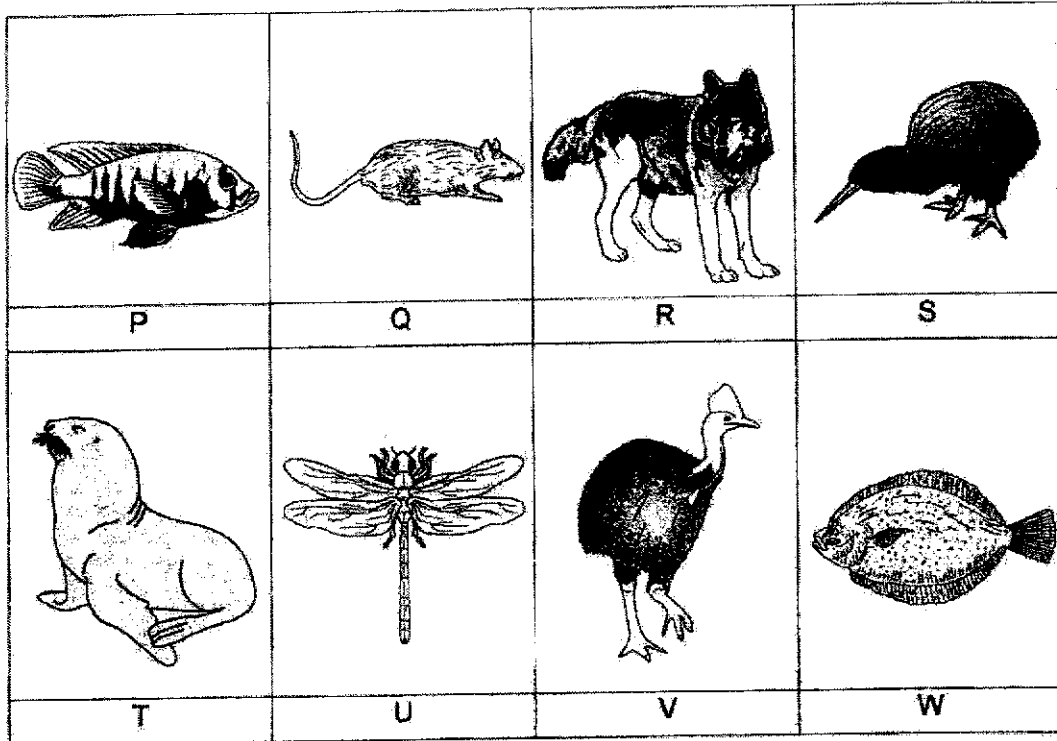
[2]



In the chart above, each box, A, B, C and D, represents a question. Complete the table below with the correct letters, A, B, C or D.

Question		The question goes into box
(i)	Does the animal fly?	
(ii)	Does the animal have feelers?	
(iii)	Does the animal have more than 2 legs?	
(iv)	Does the animal have stripes on its body?	

3. The pictures show some animals.



(a) From the pictures above, which **three** animals belong to the same animal group? [1]

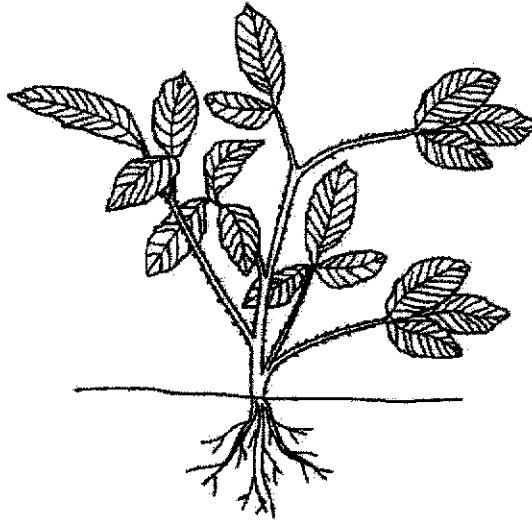
Write the correct **letters** in the boxes below.

<input type="text"/>	<input type="text"/>	<input type="text"/>
----------------------	----------------------	----------------------

(b) From the pictures given, which are the animals that have fins? [1]  
Write the correct letters in the space given below.

---

4. Observe the different parts of plant F shown below.



Plant F

The diagram below shows plant G.

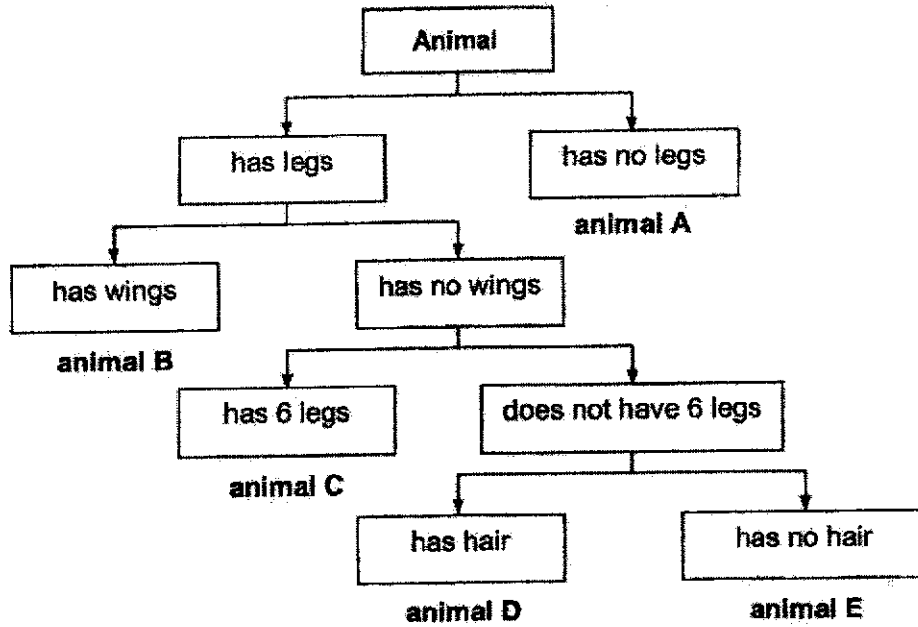
In plant G shown below, circle the parts that cannot be seen in plant F.

[2]



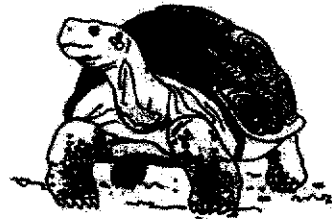
Plant G

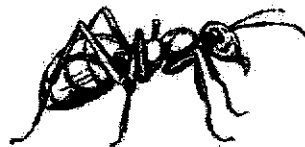
5. The diagram shows how some animals are grouped.



Study the pictures of the animals shown below. Based on the information given above, write the correct letter (A, B, C, D or E) in the boxes given. [3]







6. Study the pictures shown below carefully. For each picture, write the correct [2] characteristic of the living thing in the spaces provided.

Picture

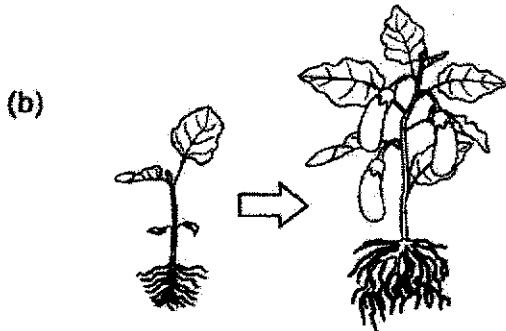
Characteristic of Living Things



Living things \_\_\_\_\_

\_\_\_\_\_

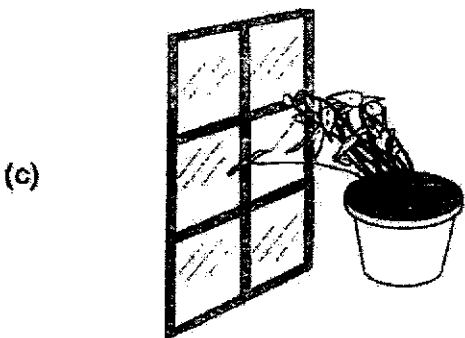
\_\_\_\_\_



Living things \_\_\_\_\_

\_\_\_\_\_

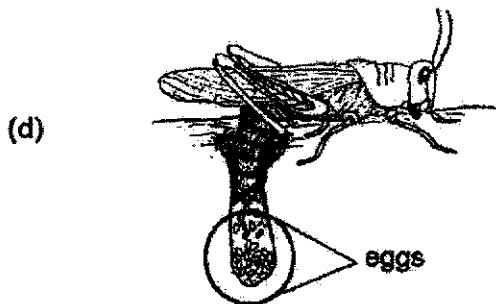
\_\_\_\_\_



Living things \_\_\_\_\_

\_\_\_\_\_

\_\_\_\_\_

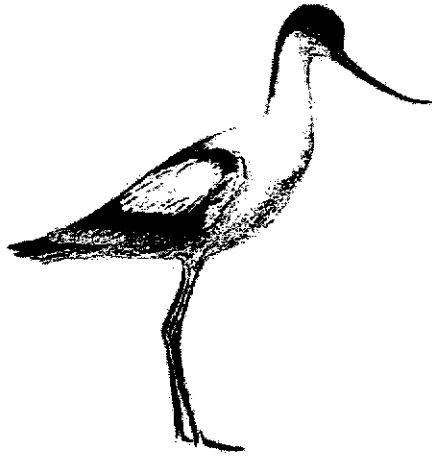


Living things \_\_\_\_\_

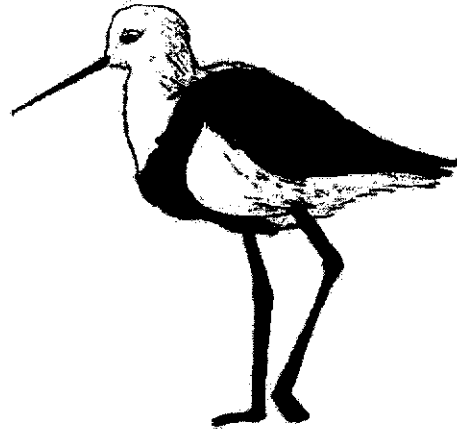
\_\_\_\_\_

\_\_\_\_\_

7. The diagrams show animals X and Y. Observe the different parts of animals X and Y carefully.



Animal X



Animal Y

Based on the diagrams given, tick (✓) the correct observations of animals X and Y. [2]

(a) Animal X has a curved beak.

(b) Animal Y has a straight beak.

(c) Animal Y has a black and white head.

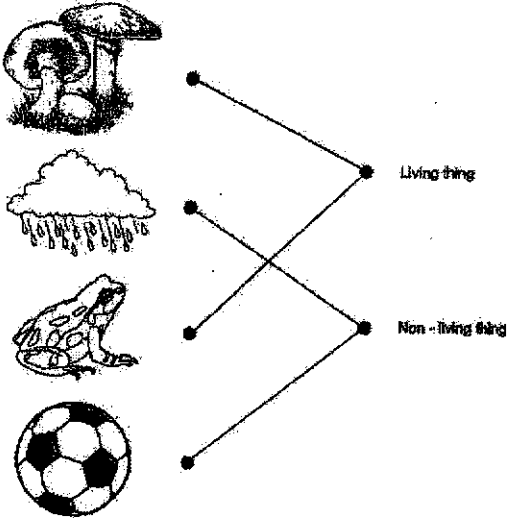
(d) Both animals have feathers as outer covering.

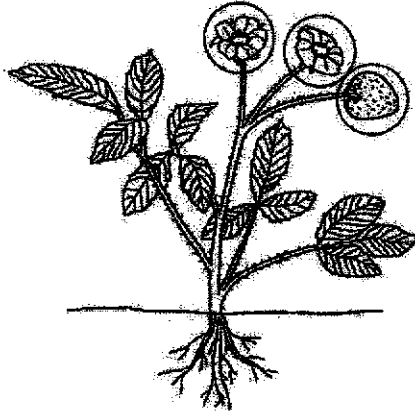
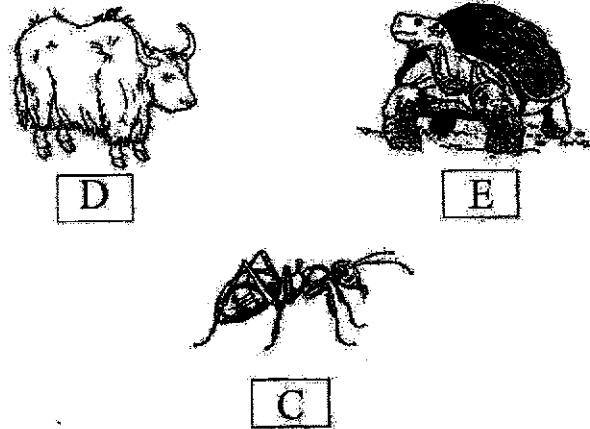
**End of Weighted Assessment 1**



SCHOOL : HENRY PARK PRIMARY SCHOOL  
 LEVEL : PRIMARY 3  
 SUBJECT : SCIENCE  
 TERM : WEIGHTED ASSESSMENT 1

**Weighted Assessment 1**

Q1	
Q2	<p>a) D          b) B          c) A          d) C</p>
Q3	<p>a) Q, R, T          b) P, W</p>

Q4	 <p style="text-align: center;">Plant G</p>
Q5	 <p style="text-align: center;">D                      E</p> <p style="text-align: center;">C</p>
Q6	<p>a) Living things need food to survive.  b) Living things grow.  c) Living things respond to changes to around them.  d) Living things reproduce</p>
Q7	<p>a) Tick (a),(b) and (d)</p>