



PEI HWA PRESBYTERIAN PRIMARY SCHOOL
WEIGHTED ASSESSMENT

PRIMARY 3
SCIENCE

Name: _____ ()

Class: Primary 3 Responsibility _____

Date: _____

Parent's Signature

Total time: 40 minutes

INSTRUCTIONS TO PUPILS

1. Write your Name, Class and Index No. and Date at the spaces provided above.
2. DO NOT turn over the page until you are told to do so.
3. Follow all instructions carefully.
4. Answer all questions in the question paper.

FOR TEACHER'S USE

Marks (MCQ) :	12
Marks (Open-ended) :	8
Total Marks :	20

There are a total of 7 pages in this booklet, excluding the cover page.

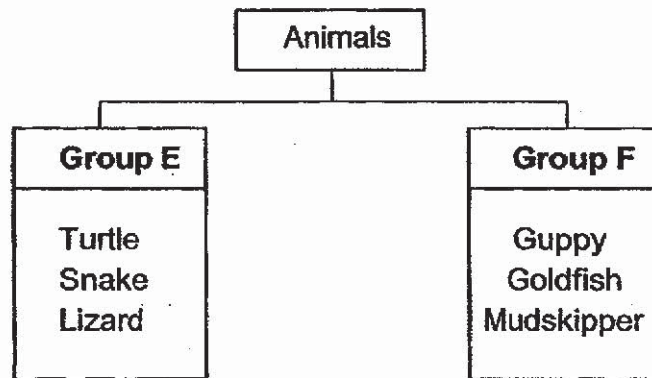
For each question from 1 to 6, four options are given. One of them is the correct answer. Make your choice (1, 2, 3 or 4) and write your answer in the brackets provided.

(12 marks)

1. Which of the following is not an animal group?

- (1) Reptile
- (2) Mammal
- (3) Toadstool
- (4) Amphibian

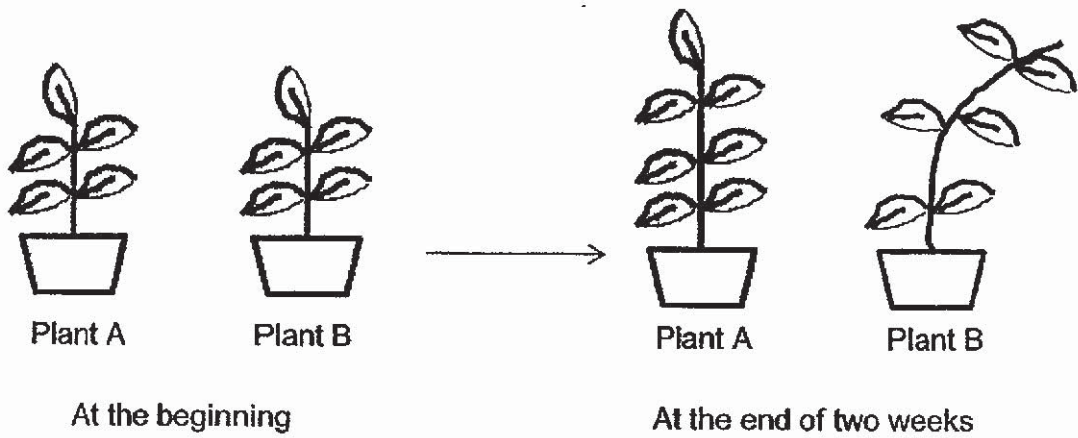
2. Marcus classified some animals as shown below.



Which of the following headings best represent Group E and Group F?

	Group E	Group F
(1)	Amphibian	Bird
(2)	Reptile	Fish
(3)	Mammal	Reptile
(4)	Bird	Amphibian

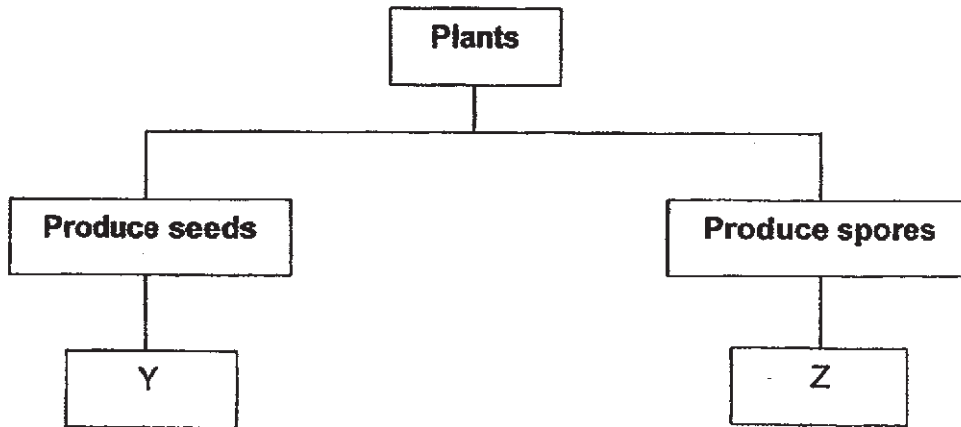
3. Ali had 2 similar pots of plants. They were the same height at the beginning of the experiment. He put them in two different cardboard boxes and placed them under the sun. He watered them with the same amount of water daily for two weeks.



Which two boxes were used to cover Plant A and Plant B?

	Plant A	Plant B
(1)		
(2)		
(3)		
(4)		

4. Plants Y and Z are classified as shown below.



Which one of the following plants best represents Y and Z?

	Y	Z
(1)	Staghorn fern	Moss
(2)	Rambutan tree	Coconut tree
(3)	Bird's nest fern	Orange tree
(4)	Apple tree	Staghorn fern

5. Which of the following statements about bacteria is true?

- (1) Bacteria are micro-organisms.
- (2) Bacteria are harmful to human beings.
- (3) Bacteria can be seen using a spectacles.
- (4) Bacteria can only be found in a human body.

6. The diagrams below show 2 living things, L and M.



L



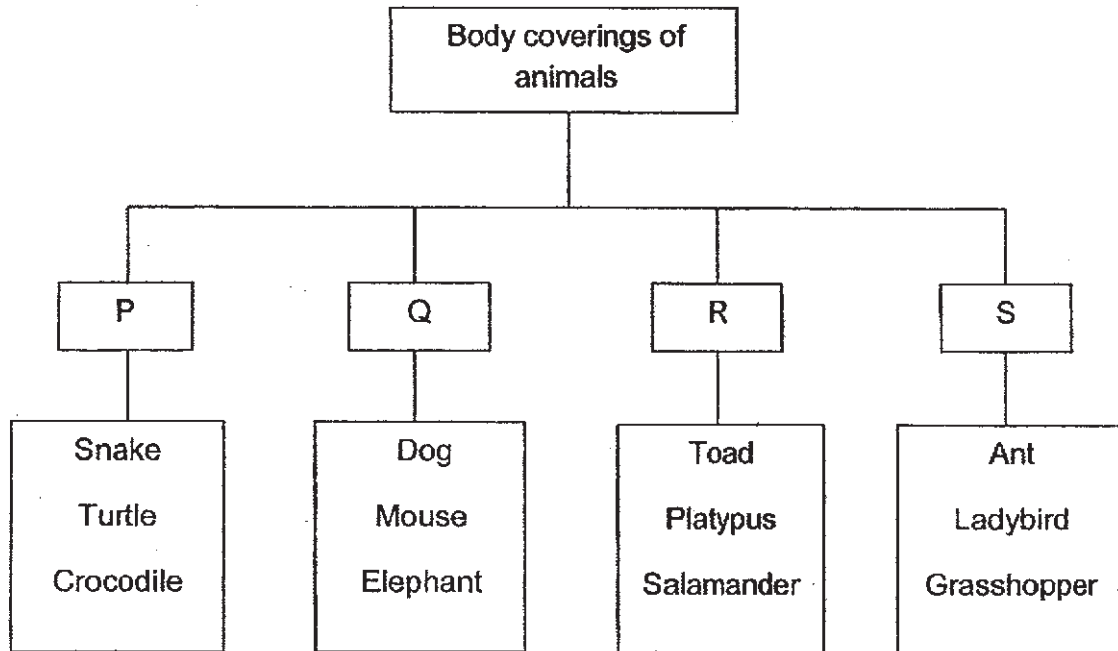
How are L and M similar?

- (1) They reproduce by seeds.
- (2) They make their own food.
- (3) They can feed on other living things.
- (4) They can be seen only under a microscope.

Write your answers to the questions 7 to 10 in the spaces provided.

The number of marks available is shown in brackets [] at the end of each question or part question. (8 marks)

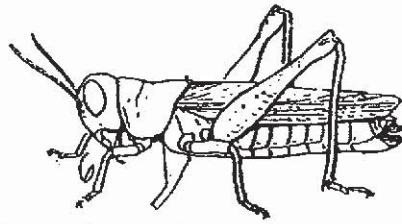
7. Study the classification chart of the body covering of animals below carefully.



(a) Identify the animal that is classified wrongly in the classification chart above. [1]

(b) Which group, P, Q, R or S, should the animal identified in (a) be classified in? [1]

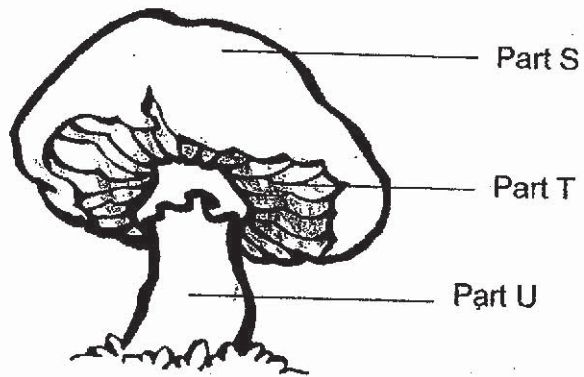
8. Study the diagram of the animal below.



(a) In which group of animals would you place the above animal? [1]

(b) Which physical characteristic of the animal above supports your answer in (a)? [1]







9. The diagram below shows a mushroom.



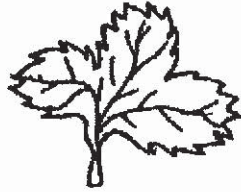
a) Mushroom reproduce by spores.
In which part, S, T and/or U are spores found? [1]

b) Other than reproducing by spores, give another reason why mushroom is not classified as a plant. [1]

10. Sheryl collected some leaves from her garden and classified them as shown below.

Group X			Group Y		
					
A	B	C	D	E	F

(a) Under which group (X or Y) would you classify the following leaf? [1]



Group: _____

Sheryl then observed leaves A and F more closely.



Leaf A



Leaf F

(b) State the similar physical characteristic of these two leaves. (Do not compare size and colour) [1]

END OF PAPER

SCHOOL : PEI HWA PRIMARY SCHOOL

LEVEL : PRIMARY 3

SUBJECT : SCIENCE

TERM : 2019 SA1

BOOKLET A

Q 1	Q2	Q3	Q4	Q5	Q6
3	2	4	4	1	3

BOOKLET B

Q7)	a)Platypus b)Group Q
Q8)	a)Insect b)Insects has hard outer covering on exoskeleton. It has six legs.
Q9)	a)Part T b)It is because plants have leaves and chlorophyll but the mushroom does not have the same characteristic as the plant.
Q10)	up Y b)Both of the leaves have a stalk on the leaf.