



PEI HWA PRESBYTERIAN PRIMARY SCHOOL
SEMESTRAL ASSESSMENT 2

PRIMARY 3
SCIENCE
(BOOKLET A)

29 OCT 2015

Name: _____ ()

Class: Responsibility _____

Total time for Booklets A and B: 1 h

INSTRUCTIONS TO CANDIDATES

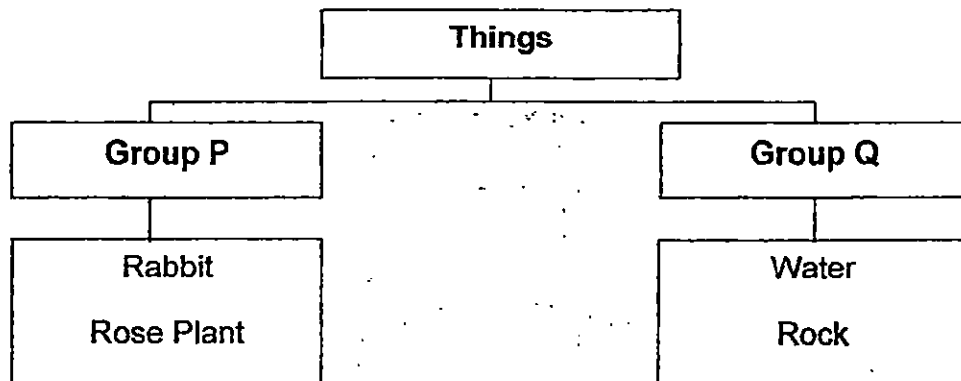
1. Write your Name, Class and Register No. in the spaces provided above.
2. DO NOT turn over this page until you are told to do so.
3. Follow all instructions carefully.
4. Answer all questions.
5. Shade your answers on the Optical Answer Sheet (OAS) provided.

This booklet consists of 17 printed pages, excluding the cover page.

For each question, from 1 to 24, four options are given. One of them is correct.
Make your choice and shade the oval (1, 2, 3, or 4) on the Optical Answer Sheet.

[48 Marks]

- 1 Ali collected some things and grouped them in the classification chart shown below.



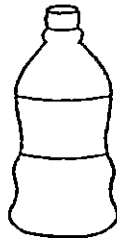
Which of the following statements do/does not describe the things in Group Q?

- A They grow.
 - B They reproduce.
 - C They respond to changes.
 - D They do not need air, food and water to stay alive.
- (1) A and D only
(2) B and C only
(3) A, B and C only
(4) B, C and D only

2 The diagrams below show 3 things.



Dried Leaves



Bottle

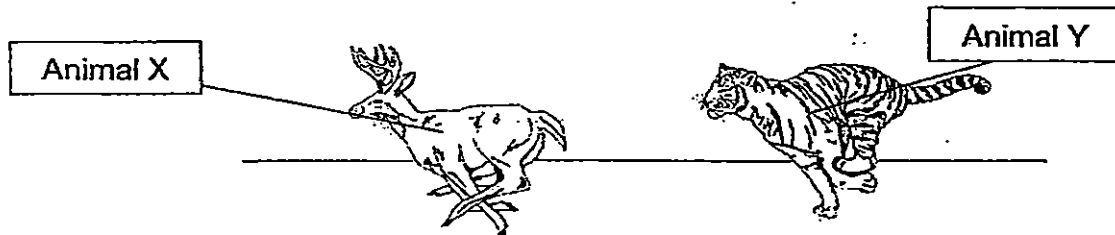


Book

How are the above things similar to one another?

- (1) They are living things.
- (2) They need water to grow.
- (3) They are non-living things.
- (4) They survive well in cold and dry places.

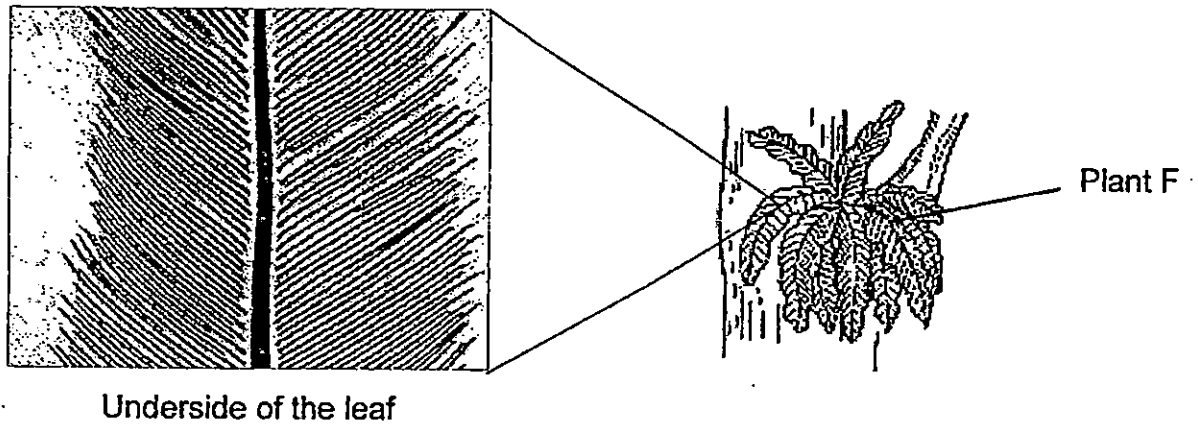
3 The picture below shows animal Y running after animal X.



Based on the picture, what is the characteristic of animal X?

- (1) It grows.
- (2) It reproduces.
- (3) It responds to the changes around it.
- (4) It needs air, food and water to survive.

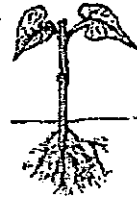
- 4 Yiyang saw Plant F on a tree. When he observed the leaf of Plant F, he found brown lines on the underside of the leaf as shown below.



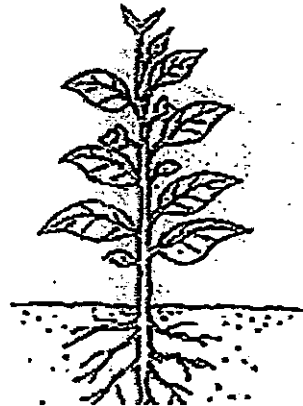
Which of the following are correct about the leaf of Plant F?

- A Grow from spores
 - B Grow from seeds
 - C Makes its own food
- (1) A and B only
(2) A and C only
(3) B and C only
(4) A, B and C
- 5 Which of the following statements show that plants can move their parts by themselves?
- A Mimosa plants close their leaves when they are touched.
 - B The stem of the green bean plants bend towards the light.
 - C The coconut fruit drops to the ground when strong wind blows.
- (1) A and B only
(2) A and C only
(3) B and C only
(4) A, B and C

6 The diagram below show a young plant and an adult plant.



Young plant



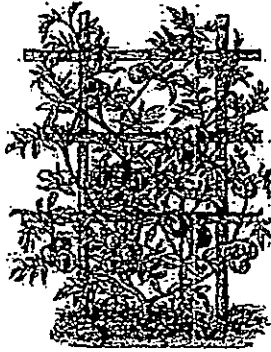
Adult plant

Which of the following shows correct statements of the adult plant and the young plant?

- A They have flowers.
- B They are able to make food.
- C They absorb water through the roots.
- D They obtain food from the dead or living organism.

- (1) A and B only
- (2) B and C only
- (3) A and C only
- (4) A, B and D only

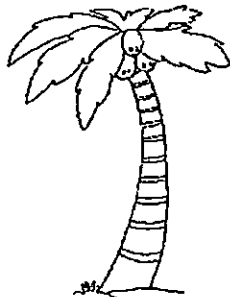
7 The diagrams below show 4 plants that Sally saw.



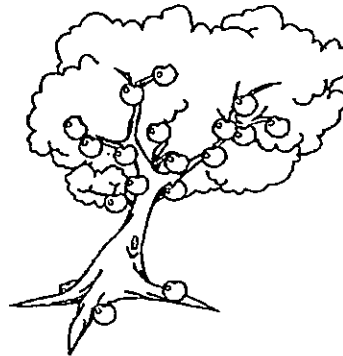
Tomato plant



Banana plant



Coconut tree



Pong pong tree

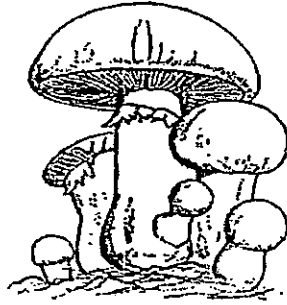
She made the following statements about the 4 plants.

- A They have edible fruits.
- B They are flowering plants.
- C They have strong stem.

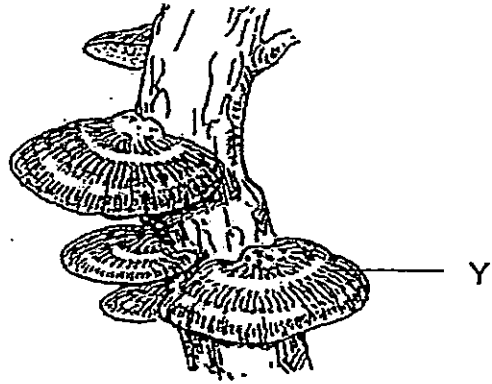
Which of the above statements is/are not correct?

- (1) A only
- (2) B only
- (3) A and C only
- (4) A, B and C

8 The diagrams below show 2 living things, W and Y.



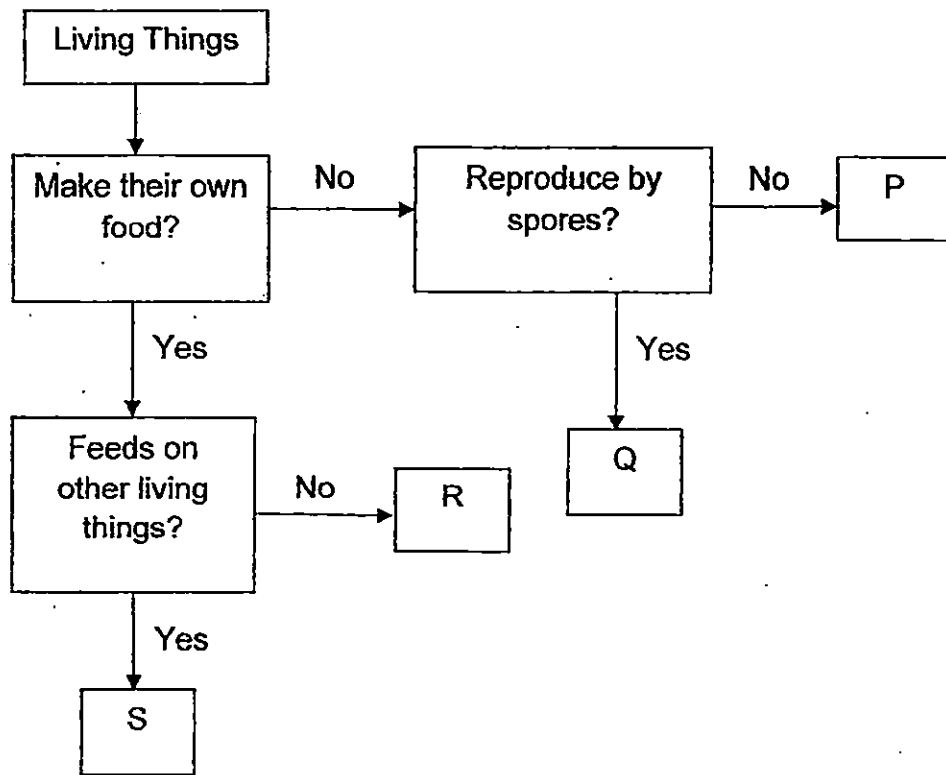
W



How are W and Y similar?

- (1) They reproduce by seeds.
- (2) They can make their own food.
- (3) They feed on other living things.
- (4) They can be seen only under a microscope.

9 The flow chart below shows the characteristics of 4 living things, P, Q, R and S.



Which one of the following living things is Q most likely to be?

- (1) Parrot
- (2) Rose Plant
- (3) Bread Mould
- (4) Sunflower Plant

- 10 Living things K and L can absorb nutrients from living and non-living things. Living thing K can be seen with naked eye but Living thing L cannot. Which of the following could living things K and L be?

	K	L
(1)	Mushroom	Bacteria
(2)	Bacteria	Mushroom
(3)	Bracket fungus	Fern
(4)	Fern	Bracket fungus

- 11 The table below shows 4 materials, E, F, G and H and their properties. A tick (✓) shows that the material has the property.

Material	Property		
	Can float on water	Waterproof	Flexible
E	✓		
F	✓		
G	✓		✓
H			✓

Mrs Lee wanted to make a towel.

Which material should she use to make a towel?

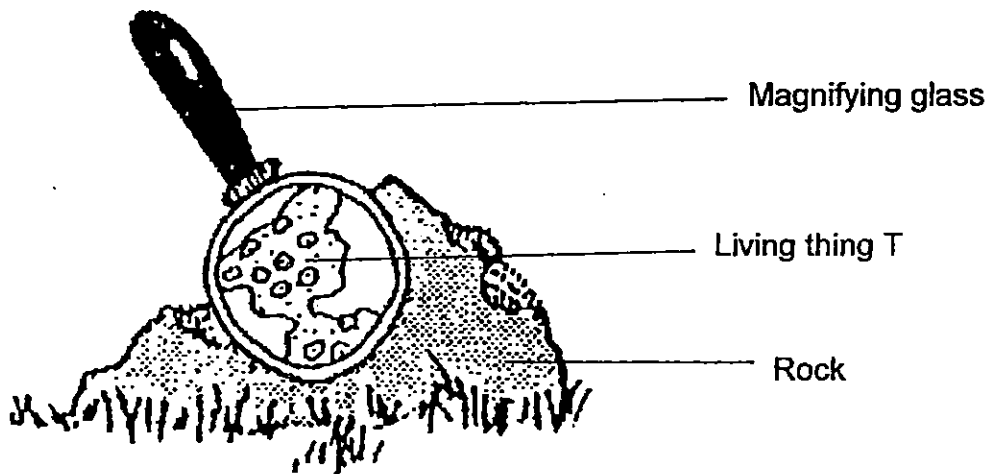
- (1) Material E
- (2) Material F
- (3) Material G
- (4) Material H

12 What are the functions of the skeletal system?

- A It protects the organs in the body.
- B It supports the body and keeps it in shape.
- C It allows blood to be carried to all parts of the body.

- (1) A and B only
- (2) A and C only
- (3) B and C only
- (4) A, B and C only

13 Ken observed Living thing T growing on the rocks using a magnifying glass.



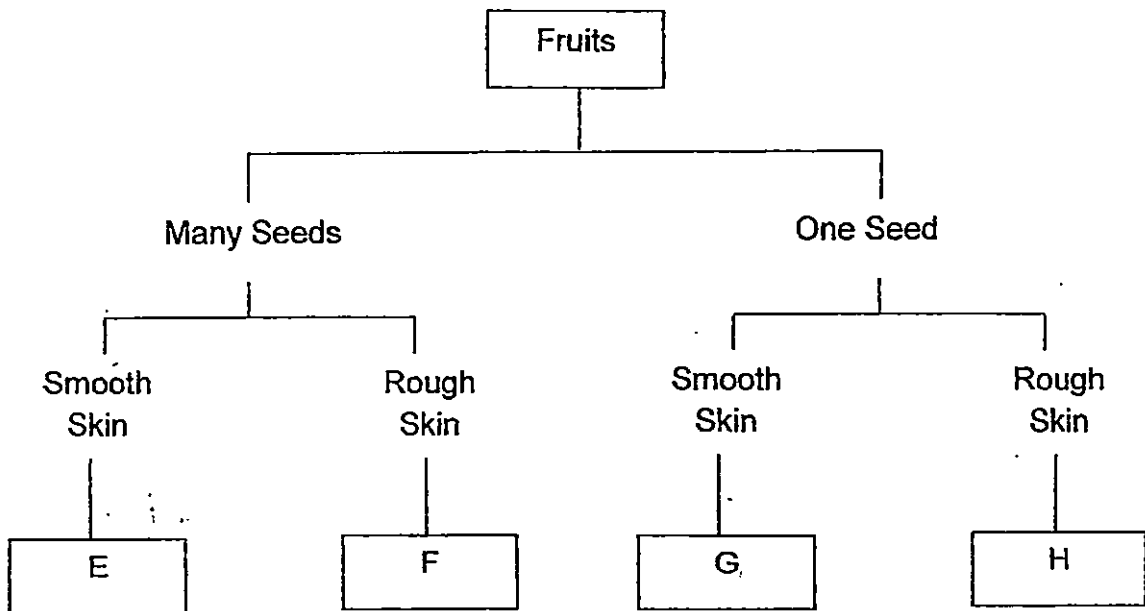
He did some research and found the following characteristics of Living thing T.

- Does not produce flowers
- Has small leaves
- Reproduces by spores

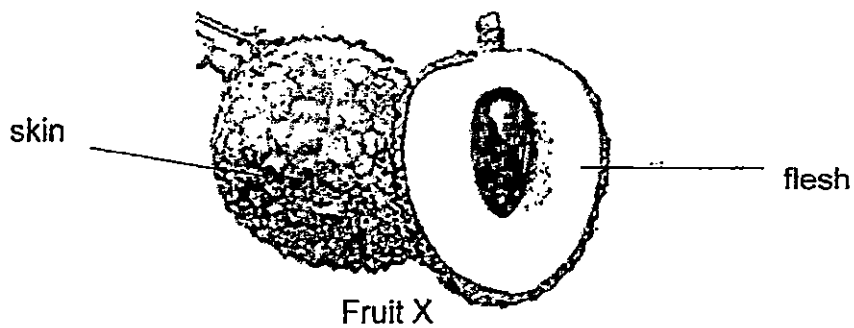
In which group could Ken classify Living thing T?

- (1) Fungi
- (2) Bacteria
- (3) Flowering plant
- (4) Non-flowering plant

14 The classification chart below shows how fruits can be grouped into 4 groups, E, F, G and H.



Muthu found a fruit, Fruit X, as shown below.



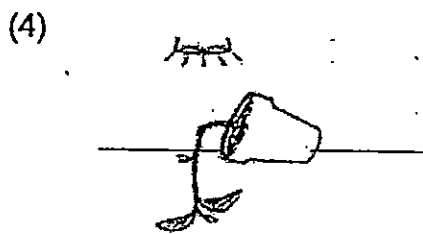
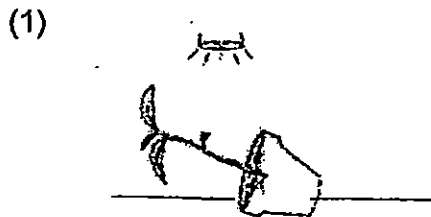
In which group, E, F, G or H should Muthu place Fruit X?

- (1) E
- (2) F
- (3) G
- (4) H

15 Sophie placed a potted plant directly below a lamp as shown below.



Which of the following diagrams shows how the plant would grow if the pot was knocked on its side and left untouched for a week?



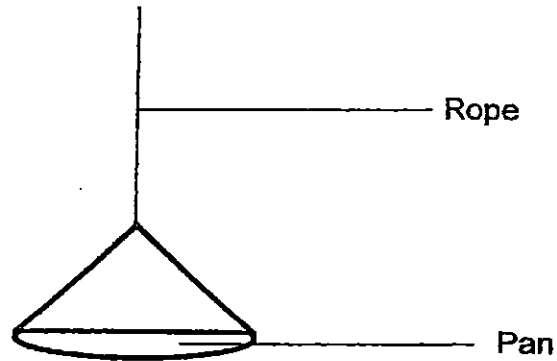
16 Mrs Tan wanted to create a bottle garden. She found some plants and placed them in a container as shown below.



What is one property of material she must consider when choosing the container so that the plants will survive?

- (1) flexible
- (2) ability to float
- (3) not able to break easily
- (4) allow light to pass through

- 17 Four different materials, M, N, O and P were made into 4 ropes. Susan wanted to test the strength of the ropes. She tied a pan at the end of the rope as shown below.



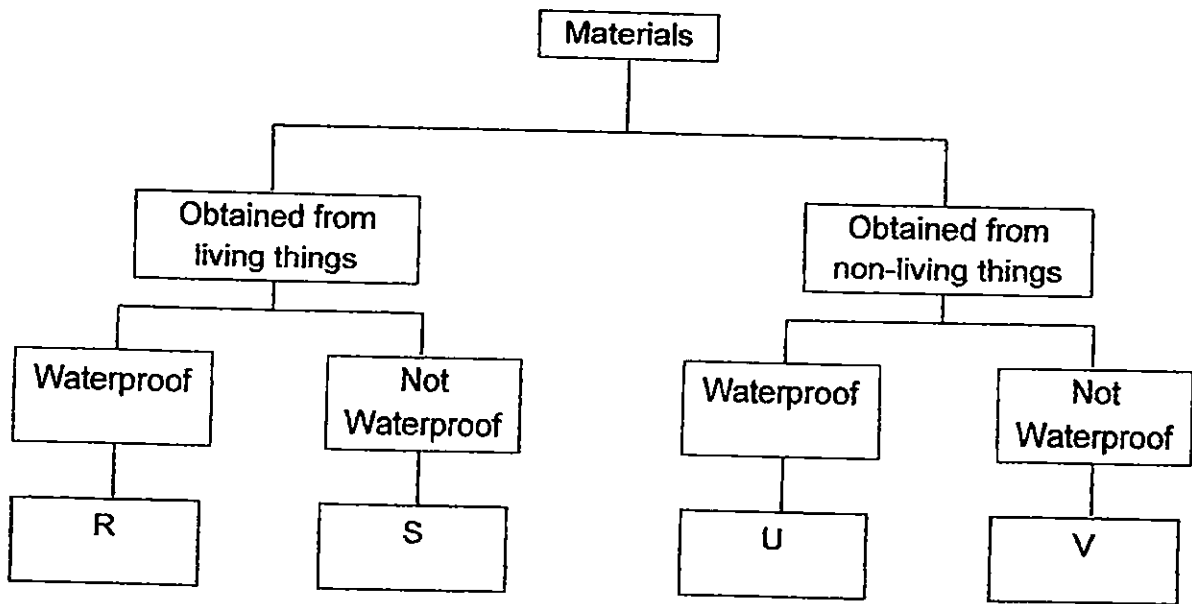
She placed some iron balls, one at a time, onto the pan until the rope snapped. She recorded the number of iron balls the rope could hold until it snapped in the table below.

Rope	Number of iron balls the rope could hold until it snapped
M	4
N	10
O	6
P	12

Based on Susan's experiment, which of the following statement is correct?

- (1) Rope O is stronger than Rope M.
- (2) Rope N is stronger than Rope P.
- (3) Rope M is stronger than Rope N.
- (4) Rope M is stronger than Rope P.

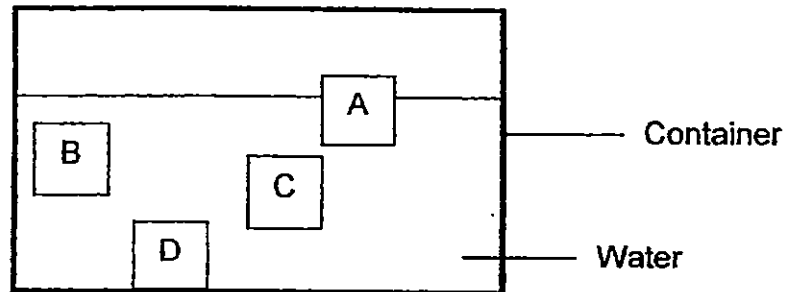
18 Study the classification chart carefully.



In which group, R, S, U or V does the material used to make an eraser belong to?

- (1) R
- (2) S
- (3) U
- (4) V

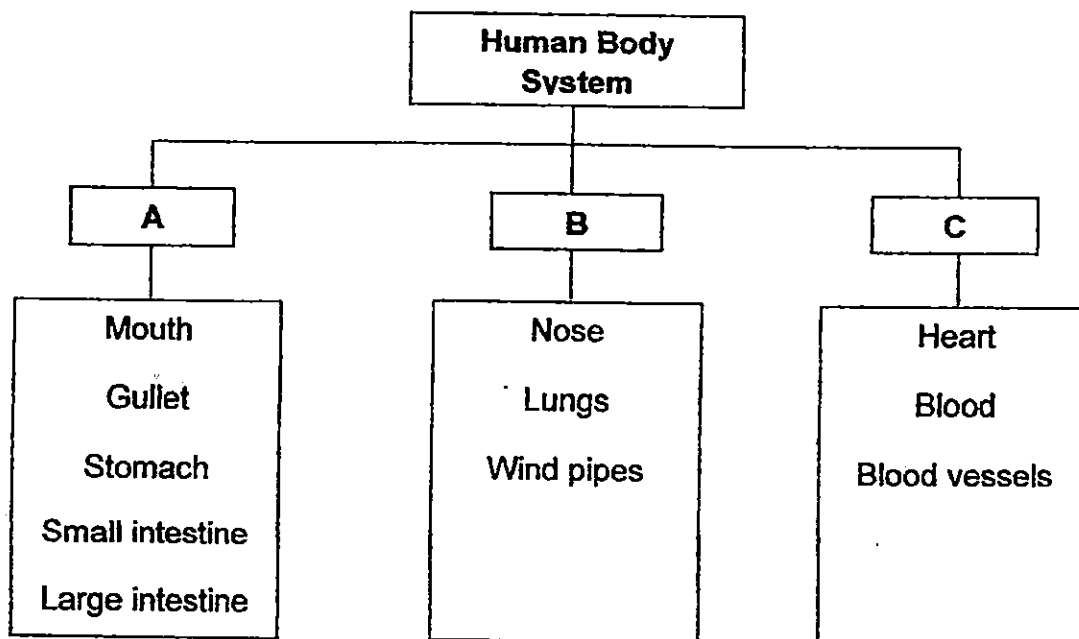
- 19 Tyler conducted an experiment using 4 blocks of different materials, A, B, C and D. He placed the 4 blocks in a container of water and he observed that the 4 blocks were found at different sections as shown below.



He wanted to make a swimming board to help him to float better in water. Which material A, B, C or D should he use to make the swimming board?

- (1) A
 - (2) B
 - (3) C
 - (4) D
- 20 Max ate an apple.
- Which part of the digestive system digests his food completely and absorbed the nutrients into his body?
- (1) Mouth
 - (2) Stomach
 - (3) Large intestine
 - (4) Small intestine

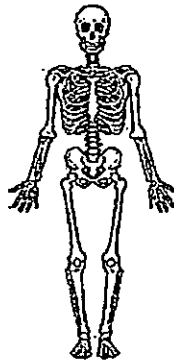
21 Study the classification chart of the human body system carefully.



Which of the following subheading is most suitable for the above systems A, B and C?

	A	B	C
(1)	Circulatory	Digestive	Respiratory
(2)	Digestive	Respiratory	Circulatory
(3)	Skeletal	Muscular	Respiratory
(4)	Respiratory	Skeletal	Circulatory

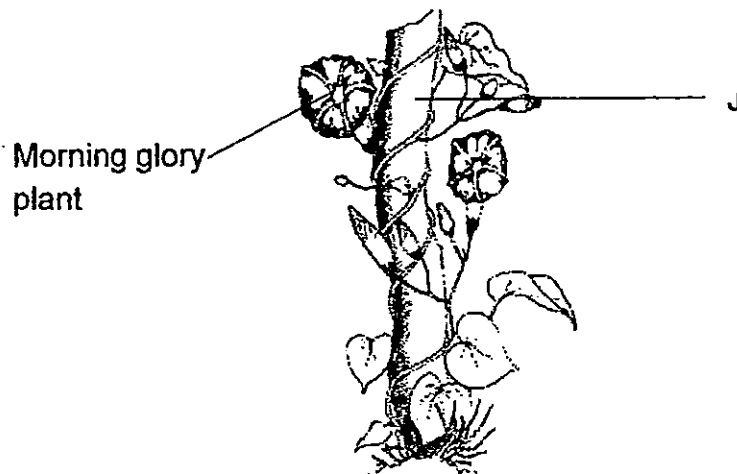
22 The diagram below shows a human skeletal system.



Which of the following systems in the human body works together with the skeletal system to help us write?

- (1) Digestive System
- (2) Muscular System
- (3) Circulatory System
- (4) Respiratory System

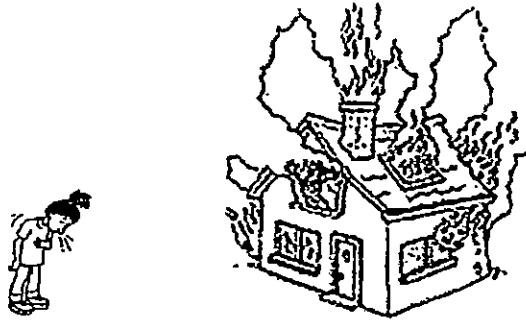
23 The diagram below shows a morning glory plant growing around J.



What is the function of J?

- (1) To make food.
- (2) To hold up the plant.
- (3) To absorb water for the plant.
- (4) To allow the exchange of gases.

- 24 When there is a fire, Rachel breathes in thick smoke and experiences difficulty in breathing and she coughs violently.



Which of Rachel's body system is affected directly?

- (1) Skeletal System
- (2) Muscular System
- (3) Circulatory System
- (4) Respiratory System



PEI HWA PRESBYTERIAN PRIMARY SCHOOL
SEMESTRAL ASSESSMENT 2

**PRIMARY 3
SCIENCE
(BOOKLET B)**

29 OCT 2015

Name: _____

Class: Responsibility _____

Total time for Booklets A and B: 1 h

INSTRUCTIONS TO CANDIDATES

1. Write your Name, Class and Register No. in the spaces provided above.
2. DO NOT turn over this page until you are told to do so.
3. Follow all instructions carefully.
4. Answer all questions.
5. Write all your answers in this booklet.

Marks (Booklet A) :	48
Marks (Booklet B) :	32
Total Marks (Booklets A & B) :	80

This booklet consists of 10 printed pages, excluding the cover page.

For questions 25 to 33, write your answers in this booklet.

The number of marks available is shown in brackets [] at the end of each question or part question. [32 Marks]

25 The table below shows the height of 3 things P, Q and R over 12 months.

Thing	Height of the thing after		
	0 month	3 months	12 months
P	3 cm	3 cm	3 cm
Q	10 cm	5 cm	0 cm
R	0 cm	5 cm	10 cm

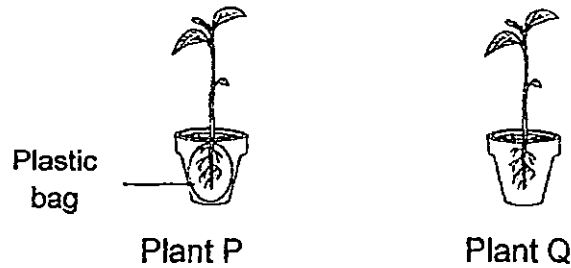
(a) Which two things are a human baby and a toy block ? [2]

(i) Human baby: _____

(ii) Toy block: _____

(b) What is one characteristic of the human baby that helped you choose your answer for (a)(i)? [1]

- 26 John did an experiment on two similar pots of plants, Plant P and Plant Q. He used a plastic bag to wrap up the roots of Plant P. Then he watered both Plants P and Q with same amount of water every day. He placed the two plants in the garden. After 3 weeks, he observed that Plant Q grew and Plant P died.



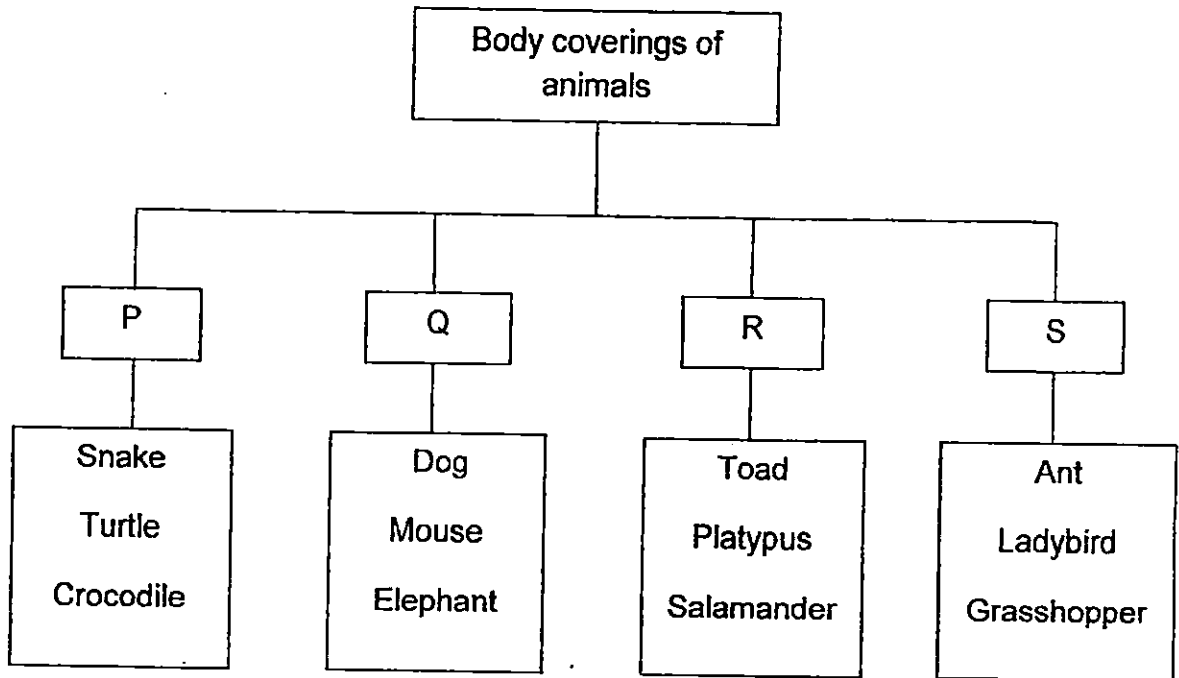
Explain clearly why Plant Q grew and Plant P died. [2]

- 27 Devi had 2 slices of bread of the same size Bread X and Bread Y. She placed Bread X in the fridge and Bread Y on the table near the window. She sprayed some water only on Bread Y. She observed the 2 slices of bread for one week and noticed that only one of the bread had some coloured patches growing on it.

(a) Which bread, Bread X or Bread Y will have the coloured patches growing on it? [1]

(b) Explain your answer in (a). [2]

28 Study the classification chart of the body covering of animals below carefully.

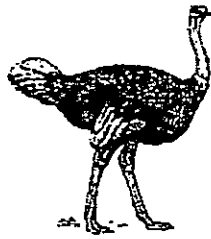


(a)(i) Identify ^{the} animal that is classified wrongly in the classification chart above. [1]

(ii) Which group, P, Q, R or S should the animal identified in (a) be classified in? [1]

(b) Explain why lizard is classified as a reptile. [2]

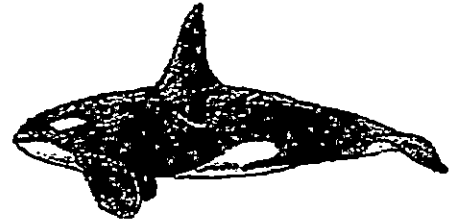
29 The diagrams below show three animals, Animals X, Y and Z.



Animal X



Animal Y



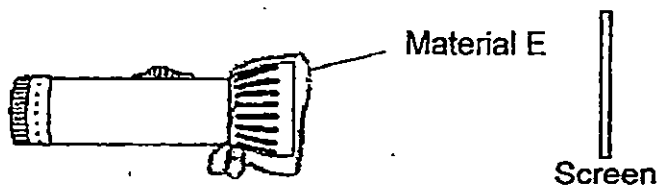
Animal Z

- (a) Which of the above animals, X, Y ~~or~~ Z, lay eggs? [1]

- (b) State one difference in the physical characteristics between Animal Y and Animal Z. (Do not compare size, shape and colour.) [1]

- (c) Susan said that Animal X and Animal Y belonged to the same group of animals because both have wings. Mary said she was wrong. What are the two physical characteristics of animals X and Y that would explain why Mary said so? [2]

- 30 Mei Mei wanted to conduct an experiment to find out which material E, F or G allows most amount of light to pass through. She used a torchlight and wrapped the material on each torchlight as shown below.



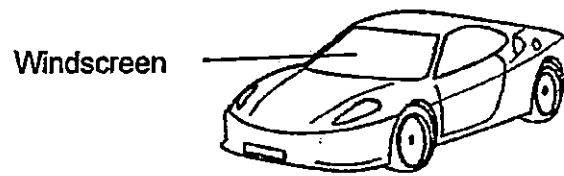
She switched on the torchlights and observed the amount of light shining through each of the material and recorded her observations in the table below.

Materials	Observation
E	Bright light patch on the screen
F	Dim light patch on the screen
G	No light patch on the screen

- (a) Give a reason why Mei Mei could not see any light for material G. ^{or} [1]

Question 30 continues on page 23

(b) Mei Mei wanted to replace the windscreen of her car.

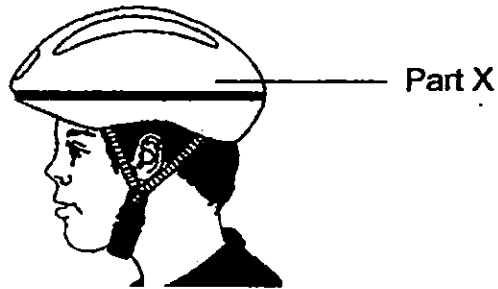


- (i) Based on the observation in Mei Mei's experiment, which material, E or G, should not be used to make the windscreen. [1]

- (ii) What is another property that Mei Mei should test to find out if the material is suitable as a windscreen? [1]

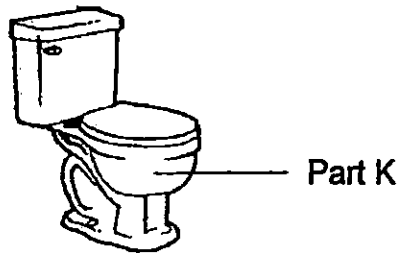
- (iii) Give an example of the material that can be used as a windscreen of a car. [1]

31 The diagram below shows a cyclist helmet.



- (a) Mr Toh suggested to use plastic instead of glass for part X. [1]
Explain why he said so.

- (b) The diagram below shows a toilet bowl found commonly at homes in Singapore.



- (i) State the material that is used for to make Part K in most of the toilet bowls. [1]

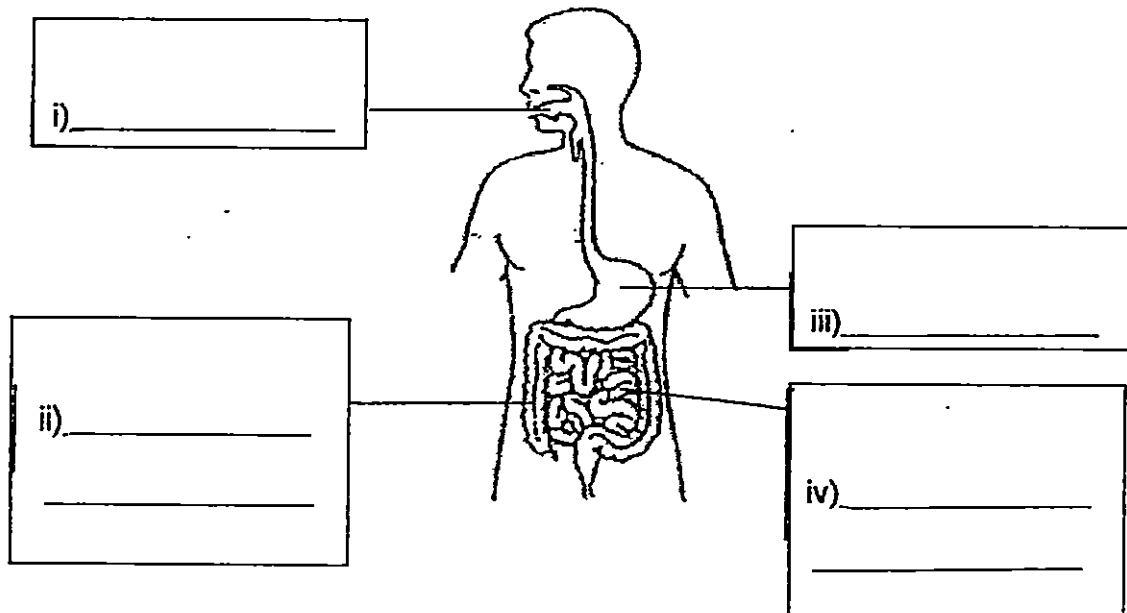
- (ii) What are the 2 properties of this material that makes it suitable to make Part K? [2]

32 Mary had a plate of chicken rice for dinner.



- (a) Describe what will happen to the food in her mouth before it enters the gullet. [2]

- (b) Label the digestive system in the diagram. [2]



33 Mr Tan bought a potted plant. He left the plant in his house without taking care of it for a few weeks. Then, he observed that the leaves started drooping and turned yellow.



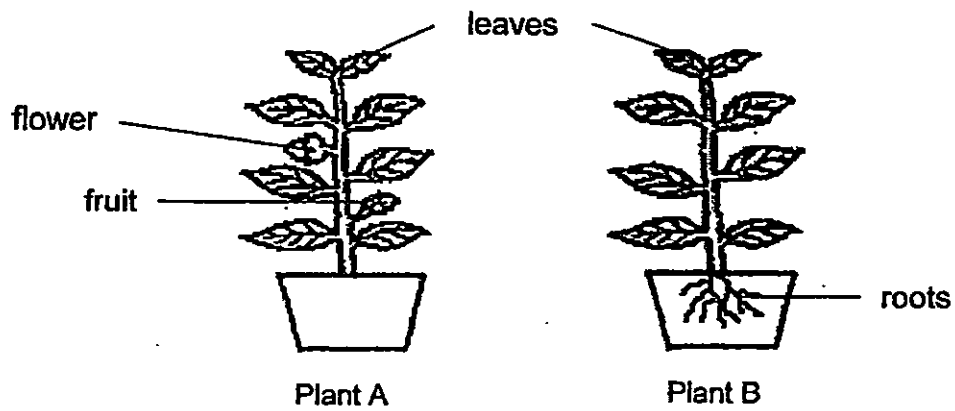
Drooping
leaves

(a) Give a reason why the leaves drooped and turned yellow.

[1]

Question 33 continues on page 27

Mary saw 2 plants of the same kind in her garden. She dug out both plants. She cut off all the roots of plant A. She removed all the fruits and flowers of plant B. She then replanted both plants into 2 pots as shown. She watered them with same amount of water every day.



- (b) Plant A died after some time. Explain why Plant A died. [1]

- c) Give 2 reasons to explain why Plant B survived. [2]

End of paper



EXAM PAPER 2015

LEVEL : PRIMARY 3

SCHOOL : PEI HWA PRESBYTERIAN PRIMARY SCHOOL

SUBJECT : SCIENCE

TERM : SA2

Q 1	Q 2	Q 3	Q 4	Q 5	Q 6	Q 7	Q 8	Q 9	Q 10
3	3	3	2	1	2	3	3	3	1
Q 11	Q 12	Q 13	Q 14	Q 15	Q 16	Q 17	Q 18	Q 19	Q 20
4	1	4	4	2	4	1	1	1	4
Q 21	Q 22	Q 23	Q 24						
2	2	2	4						

Q25. a) i) R ii) P

b) The human body is a living thing so it will grow like R. The toy block is a non-living thing so it will not grow like P.

Q26. Plant Q has air, sunlight, water and mineral salts from the soil to make food whereas Plant Q had air, sunlight but did not have water and mineral salts as the roots were wrapped in a plastic bag. Plastic bag is waterproof therefore, the roots are unable to absorb water and mineral salts.

Q27. a) Bread Y.

b) Bread Y had more moisture, air and warmth as water was only sprinkled on it whereas Bread X did not have more moisture and warmth.

Q28. a) i) Platypus ii) Q

b) They have dry skin and they lay eggs.

Q29. a) X and Y

b) Animal Y has wings while Animal Z does not have wings.

c) Animal Y wings whereas Animal X does not have wings. Animal Y has feelers while Animal X does not have feelers.

Q30. a) Material G was opaque and is not transparent.

b) i) G ii) The windscreen should be waterproof. iii) Plastic

Q31. a) Plastic will not break easily while Glass is fragile.

b) i) Ceramic ii) It is strong and waterproof.

Q32. a) The teeth will chew the food into smaller pieces and saliva will soften the food. Digestive juices will be mixed with food.

b) i) mouth ii) large intestine iii) stomach iv) small intestine

Q33. a) It did not have water to make food.

b) Plant A did not have roots to absorb water and mineral salts.

c) Plant B survived because it has roots to take in water and make food.