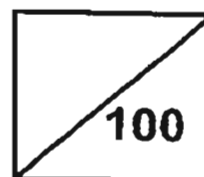




Rosyth School
Second Semestral Assessment for 2011
SCIENCE
Primary 3

Name: _____

Total
Marks:



Class: Pr 3- _____ Register No. _____ Duration: 1 h 45 min

Date: 1st November 2011 Parent's Signature: _____

Booklet A

Instructions to Pupils:

1. Do not open the booklets until you are told to do so.
2. Follow all instructions carefully.
3. This paper consists of 2 booklets, Booklet A and Booklet B.
4. For questions 1 to 30 in Booklet A, shade the correct ovals on the Optical Answer Sheet (OAS) provided using a 2B pencil.
5. For questions 31 to 44, write your answers in the spaces given in Booklet B.

	Maximum	Marks Obtained
Booklet A	60 marks	
Booklet B	40 marks	
Total	100 marks	

* This booklet consists of 14 pages.

This paper is not to be reproduced in part or whole without the permission of the Principal.

Part I (60 MARKS)

For each question from 1 to 30, four options are given. One of them is the correct answer. Make your choice (1, 2, 3 or 4). **Shade the correct oval (1, 2, 3 or 4) on the Optical Answer Sheet.**

1. Read the following characteristics below.

- A: It can die.
- B: It can grow.
- C: It can reproduce.
- D: It can move by itself.

Which one of the statements is most likely to cause a decrease in the number of living things?

- | | |
|-------|-------|
| (1) A | (2) B |
| (3) C | (4) D |

2. What is/are needed for living things to survive?

- A: Air
- B: Food
- C: Water

- | | |
|------------------|----------------|
| (1) A only | (2) B only |
| (3) B and C only | (4) A, B and C |

3. Refer to the picture below.



In which group of living things does the flamingo belong?

- | | |
|------------|------------|
| (1) bird | (2) fish |
| (3) mammal | (4) insect |

4. Which one of the following is a common characteristic of mammals?

- (1) They lay eggs.
- (2) They have hair on their body.
- (3) They breathe through their skin.
- (4) Their body is made up of three parts.

5. Which of the following plants is a non-flowering plant?



(1) Plant A



(2) Plant B



(3) Plant C

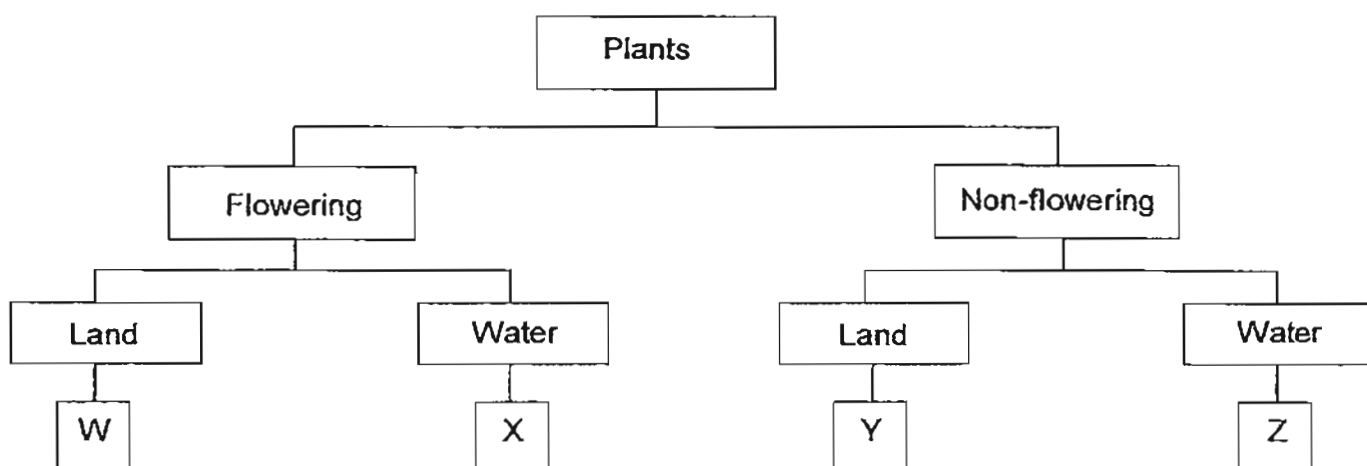


(4) Plant D

6. The table below shows the characteristics of Plants P, Q, R and S.

Characteristics	Plant P	Plant Q	Plant R	Plant S
Bears fruit	✓		✓	
Grows on land	✓	✓		

Based on the information above, the plants were classified using the chart below.



Which letters, W, X, Y or Z, best represents plants P, Q, R and S?

	Plant P	Plant Q	Plant R	Plant S
(1)	W	Z	X	Y
(2)	W	Y	X	Z
(3)	Y	W	X	Z
(4)	Y	X	Z	W

7. Look at the yeast and bracket fungi below.



yeast



bracket fungi

Which of the following statements about yeast and bracket fungi are true?

- A: Both are fungi.
- B: Both do not reproduce.
- C: Both do not make their own food.
- D: Both belong to the group of micro-organisms.

- (1) A and C only
- (2) A and D only
- (3) B and C only
- (4) B and D only

8. Kumar placed a slice of bread in a plastic bag and kept in a dark room. He did the same for three other slices but changed the amount of water dropped on the bread. He observed and recorded the number of days the bread took to become mouldy as shown below.

Bread	Volume of water (ml)	Number of days the bread took to become mouldy
A	0	8
B	2	6
C	4	5
D	6	4

Which one of the following is a correct statement?

- (1) Bread A was the first to turn mouldy.
- (2) Mould grows best in dry and dark conditions.
- (3) The smaller the volume of water was added, the faster the bread turned mouldy
- (4) The greater the volume of water was added, the faster the bread turned mouldy.

9. Ding Feng put some fruits in the basket and left it on the table for 2 weeks. After a few days, he found out that the fruits had turned bad. What was likely to be a reason?

- (1) Water is absorbed by the fruits.
- (2) The fruits have lost their nutrients.
- (3) The seeds in the fruits were developing into a new plant.
- (4) Fungi were breaking down the fruits into simple substances.

10. Which one is a man-made material?

- (1) silk
- (2) wood
- (3) rock
- (4) plastic

11. Mary was able to bend a rubber band to make different shapes. When she let go of the rubber band, it returned to its original shape.

What is the property of the rubber band observed by Mary?

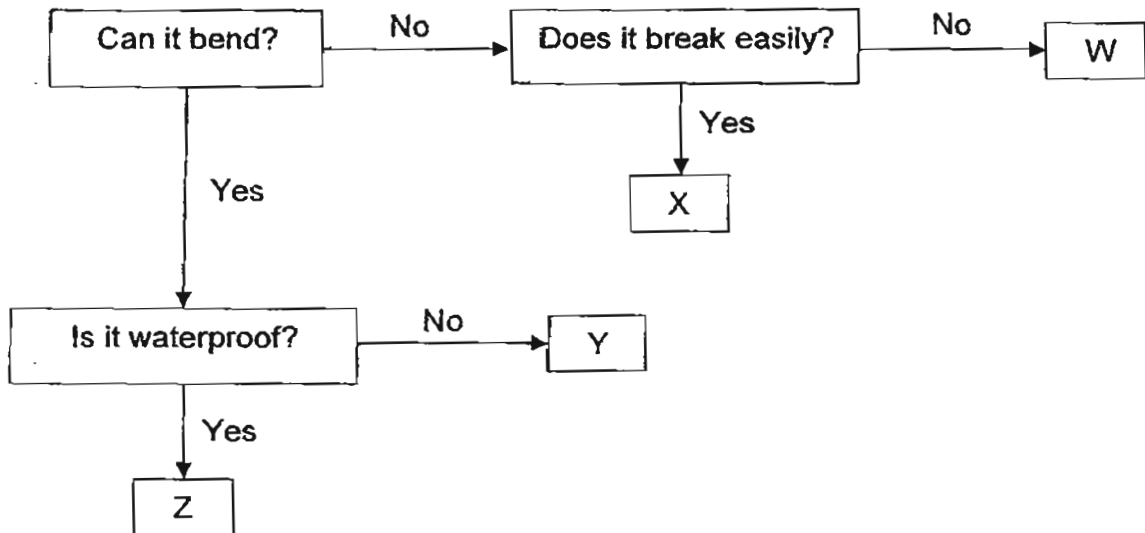
- (1) Strength
- (2) Flexibility
- (3) Hardness
- (4) Waterproof

12. Which of the following properties must you consider to make a raincoat?

- A: It is stiff.
- B: It is hard.
- C: It is flexible.
- D: It is waterproof.

- (1) A and B only
- (2) C and D only
- (3) A, C and D only
- (4) A, B, C and D

Study the flowchart below and answer questions 13 and 14.



13. Which one of the following best represents a handkerchief?

- (1) W
- (2) X
- (3) Y
- (4) Z

14. Mr Tan packed one of the things above in a box and wrote 'Handle it with care'.

Which object should it be?

- (1) W
- (2) X
- (3) Y
- (4) Z

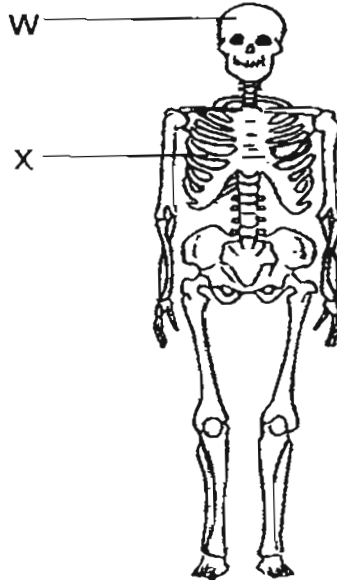
15. Ahmad placed some bricks on the planks to test the strength of the planks. He counted the least number of bricks needed to break the different types of planks. He recorded the results as shown below.

Planks	Least number of bricks
M	15
N	10
O	20
P	7

Which plank is the strongest?

- (1) M (2) N
(3) O (4) P
16. Which one of the statements below best describes the human system?
- (1) It is made up of one system that carries out a single function.
(2) It is made up of one system that carries out different functions.
(3) It is made up of many systems that carry out different functions.
(4) It is made up of many systems that carry out the same function.
17. Which body system does our nose belong to?
- (1) digestive system (2) circulatory system
(3) muscular system (4) respiratory system

18. The diagram below shows the skeletal system.



Which one of the following statements best describes the function of W and X?

- (1) Allow exchange of gases.
- (2) Enable us to stand upright.
- (3) Protect the delicate organs.
- (4) Work together to enable the body to move.

19. Tom is playing table tennis with his friend.



Which systems are involved to help him play table tennis?

- A: Skeletal system
- B: Muscular system
- C: Circulatory system
- D: Respiratory system

- (1) A and B only
- (2) A and C only
- (3) B, C and D only
- (4) A, B, C and D

20. The functions of three body systems are stated below:

System W: It breaks down food into simple substances.

System X: It enables the body to take in oxygen needed by the body and remove unwanted carbon dioxide from the body into the air.

System Y: It carries nutrients, water and oxygen to all parts of the body; it also carries waste materials away from different parts of the body.

Which of the following correctly match System W, System X and System Y?

	System W	System X	System Y
(1)	Digestive System	Circulatory System	Respiratory System
(2)	Circulatory System	Respiratory System	Digestive System
(3)	Respiratory System	Circulatory System	Digestive System
(4)	Digestive System	Respiratory System	Circulatory System

21. Leela read the following riddle.

I am a long organ in the human digestive system.
 More digestive juices are added here to help me digest the food.
 Digested food travels through my walls into the blood stream.
 What organ am I?

Which one of the following could match the riddle?

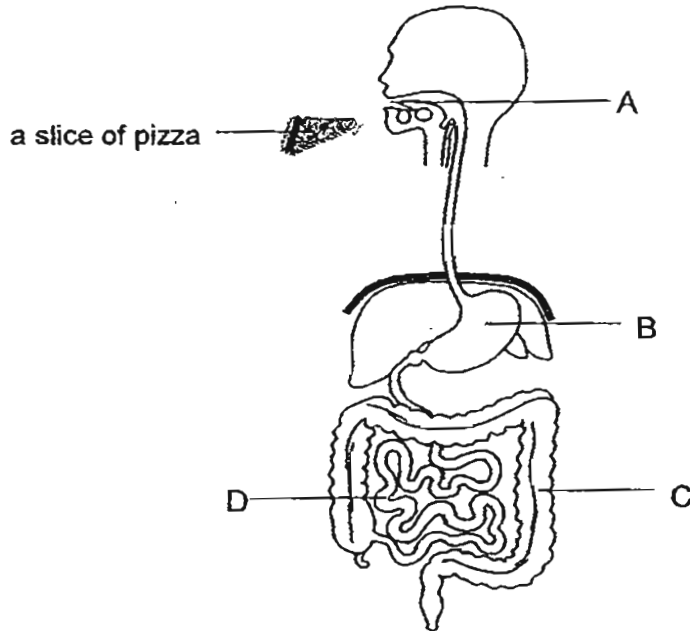
- | | |
|---------------------|---------------------|
| (1) gullet | (2) stomach |
| (3) small intestine | (4) large intestine |

22. Which of the following are the functions of the digestive system?

- A : It removes water from the undigested food.
- B : It breaks down food into simple substances.
- C : It carries digested food needed by the body to all its parts.

- (1) A and B only
- (2) A and C only
- (3) B and C only
- (4) A, B and C

Refer to the diagram below and answer Questions 23 and 24.



23. Mabel ate a slice of pizza. At which part of the digestive system was the food first reduced to smaller pieces?

- (1) A
- (2) B
- (3) C
- (4) D

24. At which part of the digestive system was the food completely digested?

- (1) A
- (2) B
- (3) C
- (4) D

25. In which part of the human digestive system does digestion begin?

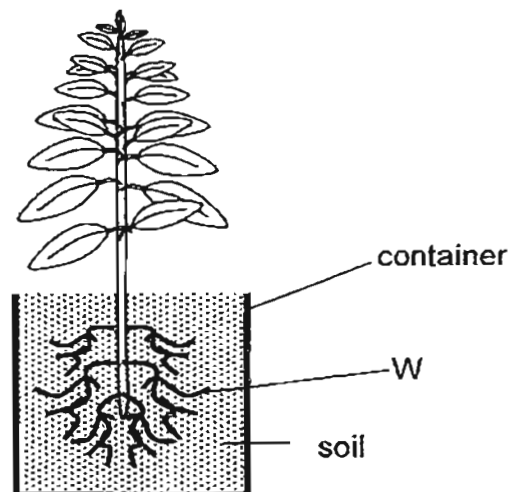
- (1) mouth
- (2) stomach
- (3) small intestine
- (4) large intestine

26. Which of the parts below belong to a flowering plant?

- A : roots
- B : stem
- C : fruits
- D : seeds

- (1) A and B only
- (2) C and D only
- (3) A, B and D only
- (4) A, B, C and D

27. Study the diagram below.



Plant

What are the functions of the plant part labelled W?

A : It holds the plant firmly to the ground.

B : It takes in water and mineral salts from the soil.

C : It carries water and mineral salts to all parts of the plant.

- (1) A and B only
- (2) A and C only
- (3) B and C only
- (4) A, B and C

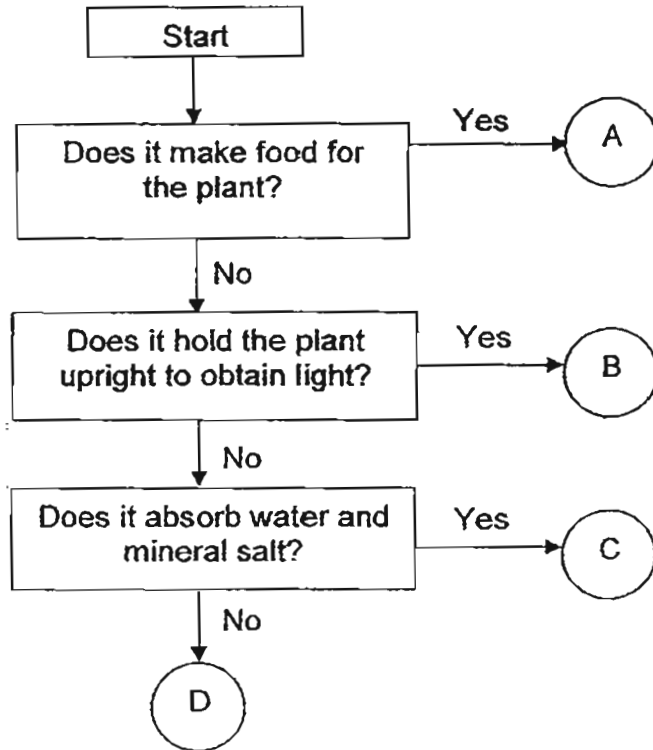
28. There was strong wind blowing but the tree did not fall.



Which part of the tree prevents it from falling?

- (1) stem
- (2) roots
- (3) leaves
- (4) branches

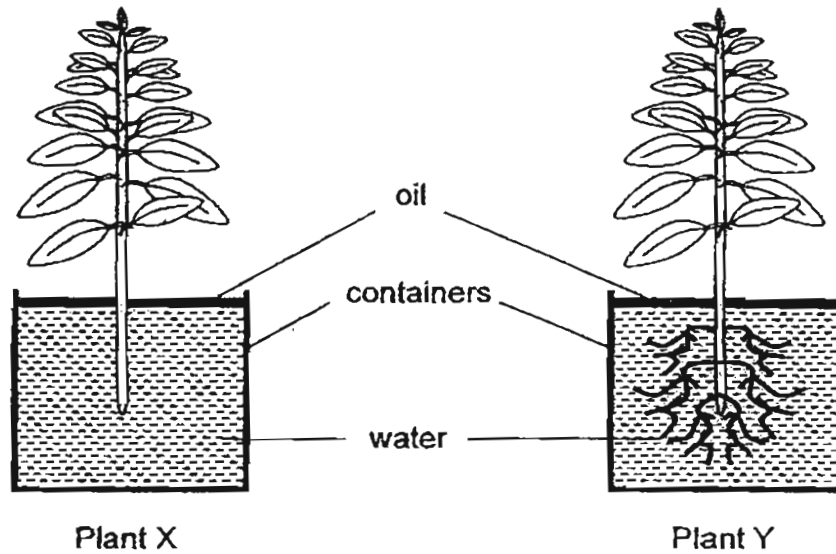
29. The flowchart below describes the functions of some parts of a plant.



Which of the following represents plant parts A, B and C?

	Part A	Part B	Part C
(1)	stem	roots	leaves
(2)	leaves	roots	stem
(3)	leaves	stem	roots
(4)	roots	stem	leaves

30. In an experiment, 2 plants, Plant X and Plant Y, were each placed into a container containing 200 ml of water.



After 4 days, the volume of water left in each container was recorded as shown in the table below.

Plant	X	Y
Original volume of water (in ml)	200	200
Volume of water left after 4 days (in ml)	198	190

Based on the results in the table above, which one of the following observation is correct?

- (1) Plant Y absorbed less water than Plant X.
- (2) Plant Y absorbed more water than Plant X.
- (3) Plant X absorbed more water than Plant Y.
- (4) Plant X absorbed the same amount of water as Plant Y.

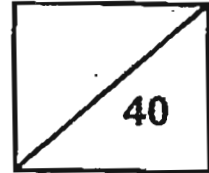
End of Part I



Rosyth School
Second Semestral Assessment for 2011
SCIENCE
Primary 3

Name: _____

Total
Marks:



Class: Pr 3- _____ Register No. _____ Duration: 1 h 45 min

Date: 1st November 2011 Parent's Signature: _____

Booklet B

Instructions to Pupils:

1. For questions 31 to 44, write your answers in the spaces given in this booklet.

* This booklet consists of 14 pages.

This paper is not to be reproduced in part or whole without the permission of the Principal.

Part II (40 MARKS)

For questions 31 to 44, write your answers in this booklet.

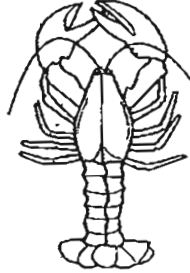
31. Read the following statements.

- A: It can die.
- B: It can move.
- C: It can reproduce.

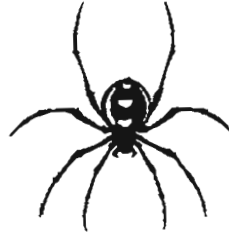
(a) One of the above statements ^{can be} is a characteristic of a non-living thing. Which is it? (1m)

(b) Rewrite the statement in (a) in such a way that it can now describe the characteristic of a living thing. (1m)

32. Sam went to the park and saw three different kinds of animals, A, B and C. He wanted to classify one of these animals below into the insect group.



A



B

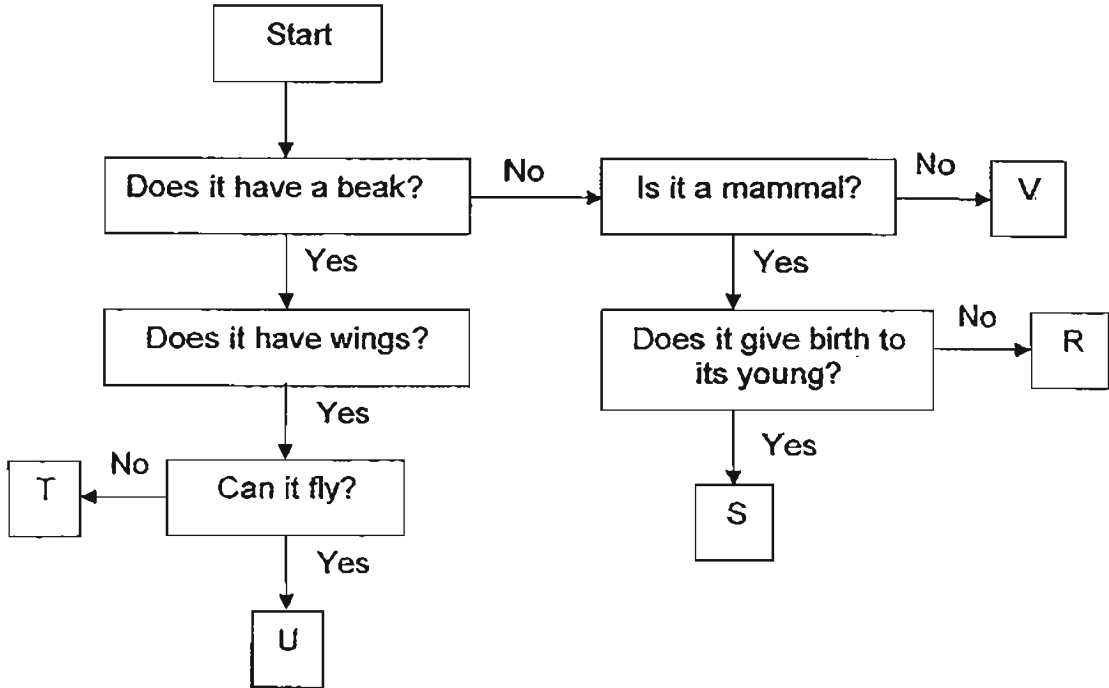


C

(a) Which one of these animals, A, B or C is an insect? (1m)

(b) Support your choice in (a) with a reason. (1m)

33. Study the flow chart below carefully.

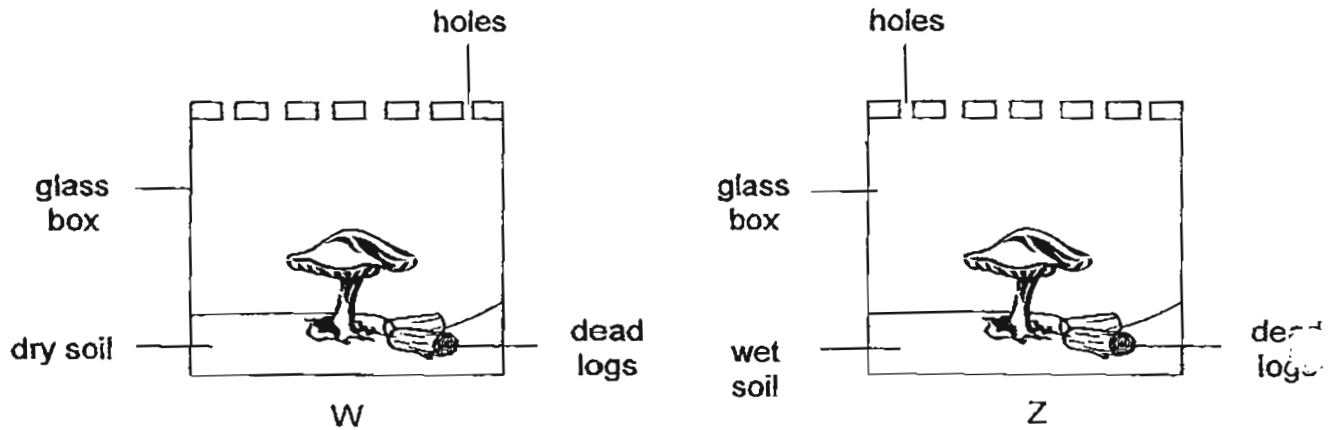


(a) Which group of animals would you put animals T and U? (1m)

(b) State two characteristics that Animal T is similar to Animal U. (2m)

(c) In what way is Animal R different from Animal S? (1m)

34. Siti carried out an experiment to find out what mushrooms need to survive. She kept each identical mushroom in the respective glass box with different conditions as show in the set-ups below.



(a) In which set-up will the mushroom be most likely to survive longer? (1m)

(b) Support your choice in (a) with a reason. (1m)

(c) Siti said that mushroom is a plant since it is a living thing. Do you agree with her? Give a reason. (1m)

35. Study the two groups of objects.

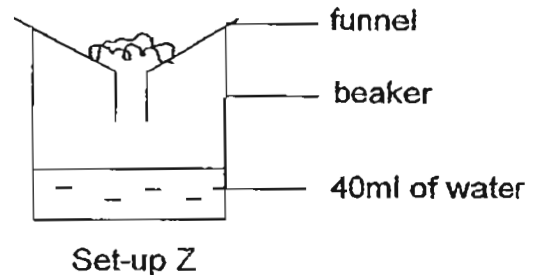
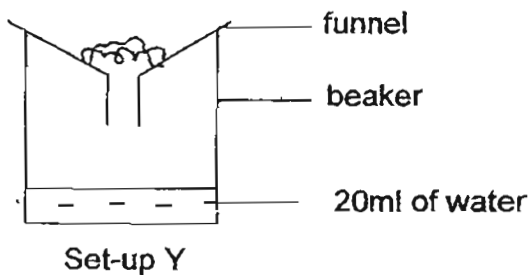
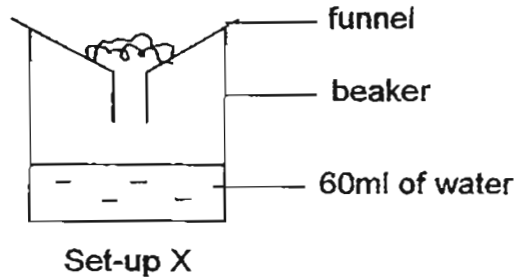
Heavy Objects	Light Objects
iron nail	rubber balloon
ceramic plate	cup
ten-cent coin	wooden cork

(a) Which objects (heavy or light) would sink in a tank of water? (1m)

(b) David was able to use the ten-cent coin to scratch the cup. Why is it possible? (1m)

(c) State the material, the above cup is most likely made of. (1m)

36. Kamal had 3 set-ups X, Y and Z. He put different materials into each of the funnels as shown below. He poured 100ml of water into each of the funnel. The water flowed through the funnel and some water was collected in each beaker as shown below.

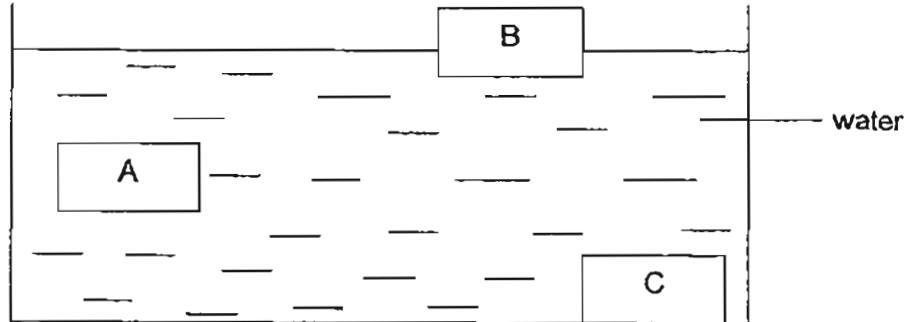


- (a) Which set-up (X, Y or Z) collected the most amount of water? (1m)

- (b) What can you infer about the material used in the set-up you have selected in (a)? (1m)

- (c) Which material in set-ups X, Y and Z is the most suitable to make a sponge? Give a reason. (1m)

37. Su Lin placed 3 different objects, A, B and C in a basin of water as shown in the diagram below. The objects are of the same size.

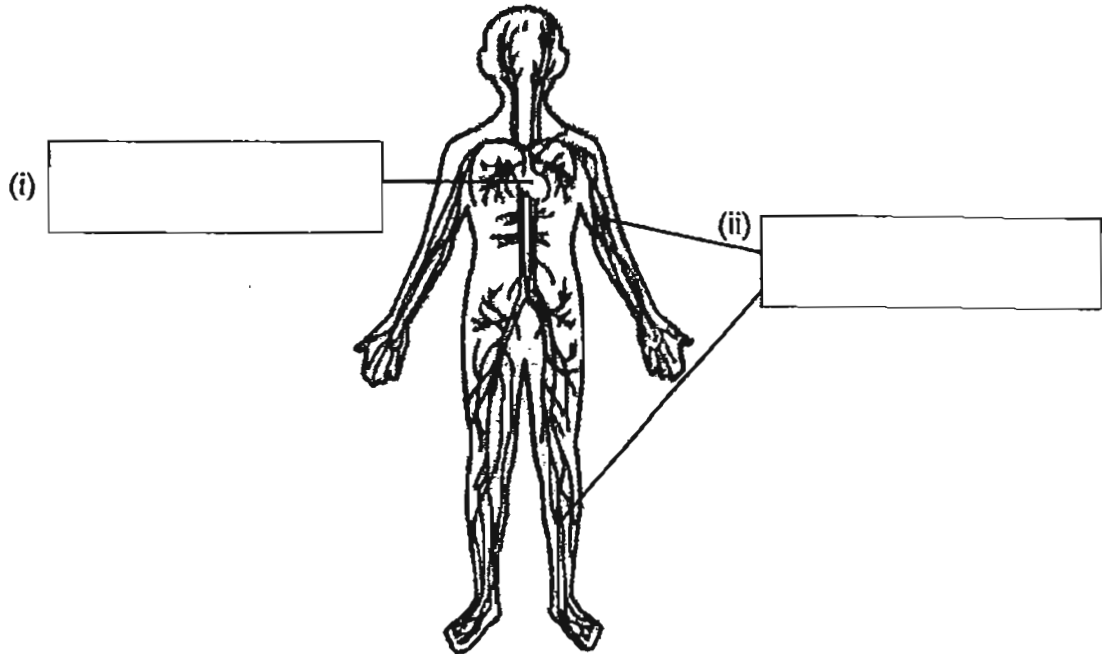


- (a) Arrange the objects, A, B and C according to their ability to float in water. Begin with the object that floats best. (2m)



- (b) If Su Lin wants to select a material as the base of her raft, which object would be most suitable? Explain your reason. (1m)

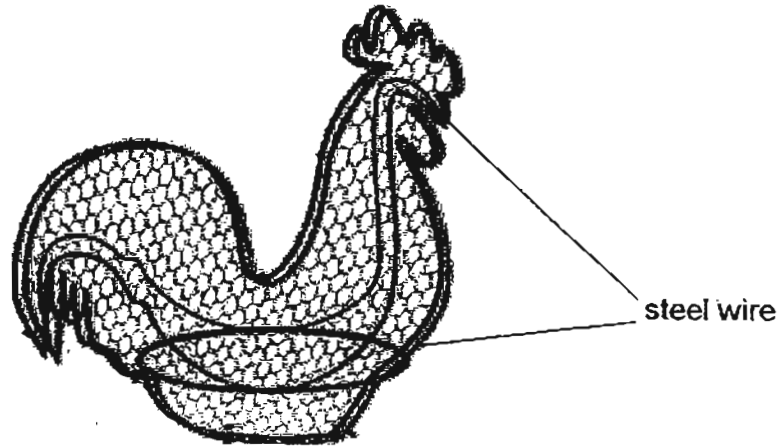
38. The diagram below shows one of the human body systems.



(a) Label the two parts in the above diagram. (2m)

(b) Which one of the human body systems does it show? (1m)

39. Weimin wanted to make a model of a rooster. His father helped him to make the framework of the rooster using some steel wire as shown below.



framework of the
rooster

- (a) Name the human body system that serves the same function as the framework of the rooster. (1m)

- (b) State two similarities between the functions of the framework in the human and the rooster. (2m)

(i) _____

(ii) _____

40. Alex was eating noodles. He used a pair of chopsticks to eat the noodles.



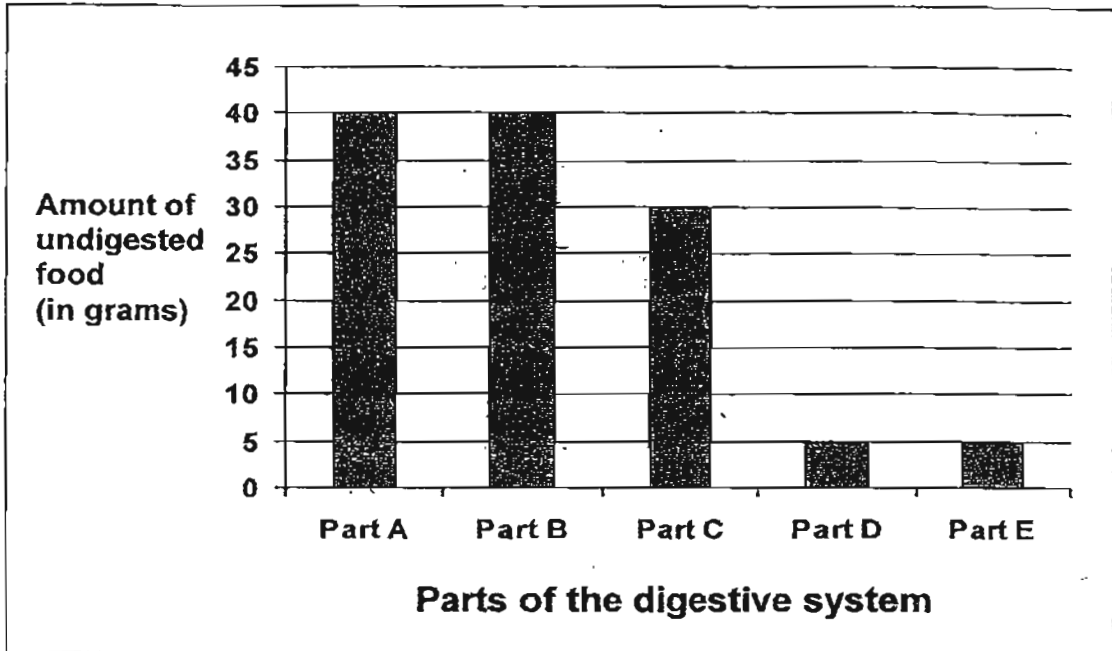
(a) Name the two body systems that were involved when Alex used the chopsticks to pick up the noodles. (2m)

(b) Alex started talking to his mother while eating his noodles. Suddenly, he choked and started to cough while swallowing the food.

(i) Which organ has the food gone to which has caused Alex to choke? (1m)

(ii) Which is the correct organ for the food to go to? (1m)

41. The graph below shows the amount of undigested food as it leaves each part of the human digestive system.



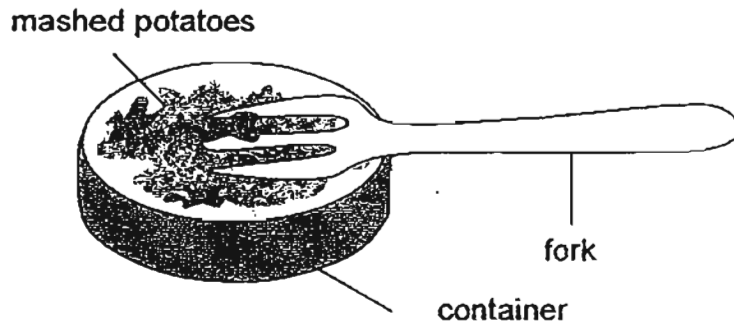
- (a) Name the parts of the digestive system above. The first one has been done for you. (2m)

Parts	Organs
A	mouth
B	(i)
C	(ii)
D	(iii)
E	(iv)

- (b) Why is the amount of undigested food in Part B the same as Part A? (1m)
-

- (c) What would happen to the undigested food in Part E eventually? (1m)
-
-

42. Mrs Kang used a fork to mash some boiled potatoes for her 6-month old baby.



(a) Which part in the mouth is similar to the fork? (1m)

(b) Describe how the part in (a) is similar to Mrs Kang using the fork to mash the boiled potatoes. (1m)

43. Sam observed the two plants shown below and inferred that they have weak stems.



Plant A



Plant B

- (a) Based on the diagrams above, what observations could Sam have made for his inference? (1m)

- (b) Based on only what you see from the diagrams above, state one difference between the two plants. (Do not compare their sizes) (1m)

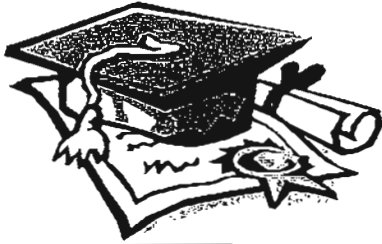
44. Rachael carried out an experiment on 3 potted plants, Plant A, Plant B and Plant C. For each plant, she removed one plant part as shown in the table below. Then, she placed the plants in her garden.

	Plant A	Plant B	Plant C
Part of plant being removed	Fruits	Flowers	Leaves
Amount of water given to the plant (in ml)	300	300	300

- (a) Which plant (Plant A, Plant B or Plant C) would mostly likely to wither first? (1m)

- (b) Explain your answer for (a). (1m)

End of Part II

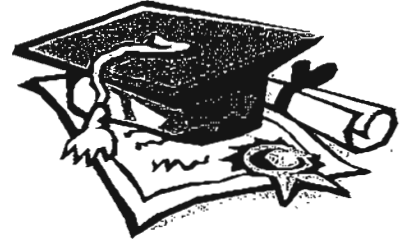


ANSWER SHEET

EXAM PAPER 2011

**SCHOOL : ROSYTH
SUBJECT : PRIMARY 3 SCIENCE**

TERM : SA2



Q1	Q2	Q3	Q4	Q5	Q6	Q7	Q8	Q9	Q10	Q11	Q12	Q13	Q14	Q15	Q16	Q17
1	4	1	2	2	2	1	4	4	4	2	2	3	2	3	3	4

Q18	Q19	Q20	Q21	Q22	Q23	Q24	Q25	Q26	Q27	Q28	Q29	Q30
3	4	4	3	3	1	4	1	4	1	2	3	2

- 31)a)It can move.
b)It can move by themselves.
- 32)a)C is an insect.
b)C has six legs.
- 33)a)Birds.
b)Both T and U have a beak and wings.
c)Animal R does not give birth to its young while Animal S give birth to its young.
- 34)a)Z.
b)W has dry soil while Z have wet soil.
c)No, mushroom is not a plant. Plants make its own food while mushroom do not.
- 35)a)Heavy objects would sink in a tank of water.
b)The ten-cent coin is harder than the cup.
c)Plastic.
- 36)a)Set-up X.
b)It can absorb the least amount of water.
c)Set-up Y as able to absorb the most amount of water.
- 37)a)B, A, C
b)B. B can float while the anothers cannot float so well.
- 38)a)i)heart ii)blood vessels
b)It show the circulatory system.
- 39)a)Skeletal system.
b)i)It support the body.
ii)It give the body its shape.

40)a)Muscular system and skeletal system.

b)i)It has gone to the windpipe.

ii)It is the gullet.

41)a)i)gullet

ii)stomach

iii)small intestine

iv)large intestine

b)Digestion do not take place there.

C0It will be pass out through the anus.

42)a)The teeth.

b)It chews the food into smaller substance.

43)a)Both plants cling on to a support.

b)Plant A has flowers but Plant B does not have flower.

44)a)Plant C.

b)It cannot make food, by it selves and will die.