



MARIS STELLA HIGH SCHOOL (PRIMARY)

SEMESTRAL ASSESSMENT 1

SCIENCE

8 MAY 2017

BOOKLET A

NAME: _____ ()

CLASS: Primary 3 ()

15 Questions

30 Marks

Total Time for Booklets A & B: 1 hour

DO NOT OPEN THIS BOOKLET UNTIL YOU ARE TOLD TO DO SO.

FOLLOW ALL INSTRUCTIONS CAREFULLY.

For each question from 1 to 15, four options are given. One of them is the correct answer. Make your choice (1, 2, 3 or 4) and shade the correct oval (1, 2, 3 or 4) on the Optical Answer Sheet (OAS). Questions 1 to 15 carry 2 marks each.

(30 marks)

1 Which one of the following characteristics is true for all living things?

- (1) They grow bigger in size over time.
- (2) They give birth to their young alive.
- (3) They only need food and water to survive.
- (4) They move from place to place by themselves.

2 The picture below shows a man shouting in pain when his hand touched a hot stove.



The observation made above shows that living things _____.

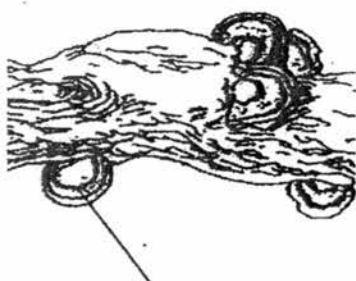
- (1) will die
- (2) can reproduce
- (3) respond to changes around them
- (4) need air, food and water to survive

3 Which of the following statements are true for all birds?

- A They can fly.
- B They lay eggs.
- C They have feathers.
- D They suckle their young.

- (1) A and B only
- (2) A and C only
- (3) B and C only
- (4) B and D only

4 The pictures below show three organisms.



Organism A



Organism B

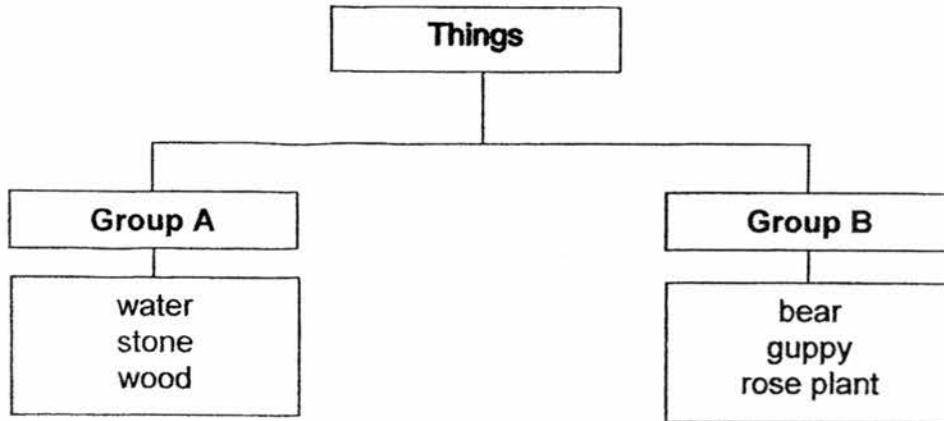


Organism C

Which of the following is true about the three organisms?

	Organism A	Organism B	Organism C
(1)	Makes its own food	Depends on others for food	Reproduces by seeds
(2)	Reproduces by spores	Reproduces by seeds	Makes its own food
(3)	Reproduces by seeds	Makes its own food	Reproduces by spores
(4)	Depends on others for food	Reproduces by spores	Makes its own food

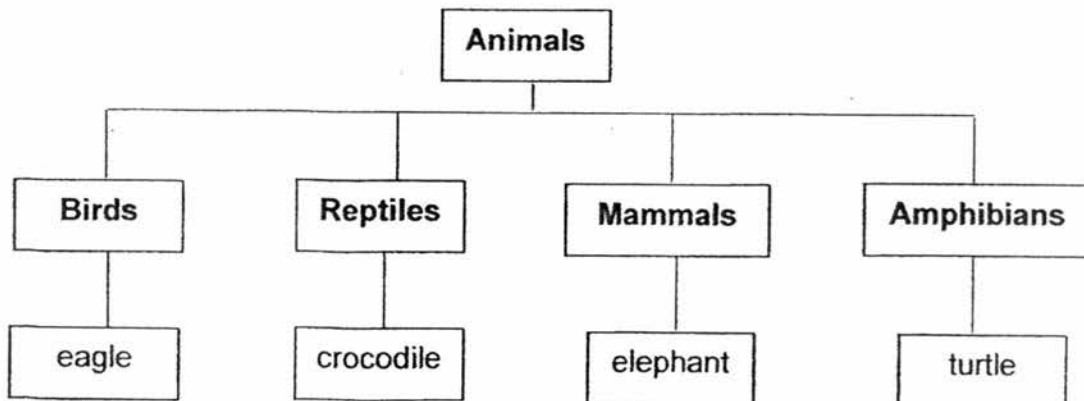
5 Study the classification chart below.



Which of the following can be placed correctly into groups A and B?

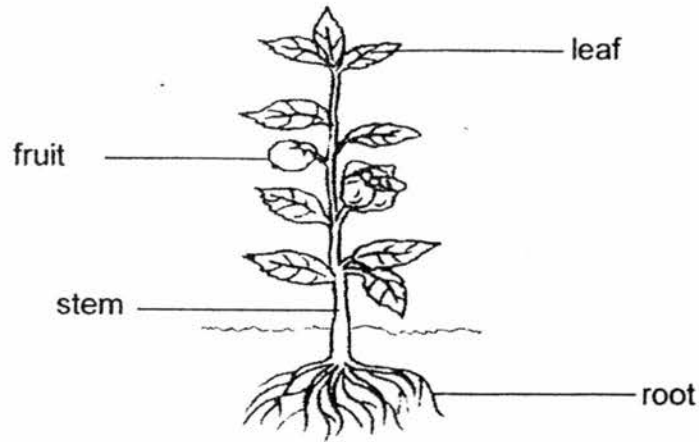
	Group A	Group B
(1)	dog	bag
(2)	yeast	caterpillar
(3)	doll	mould
(4)	wool	car

6 Which animal is **wrongly** placed in the classification chart below?



- (1) eagle
- (2) crocodile
- (3) elephant
- (4) turtle

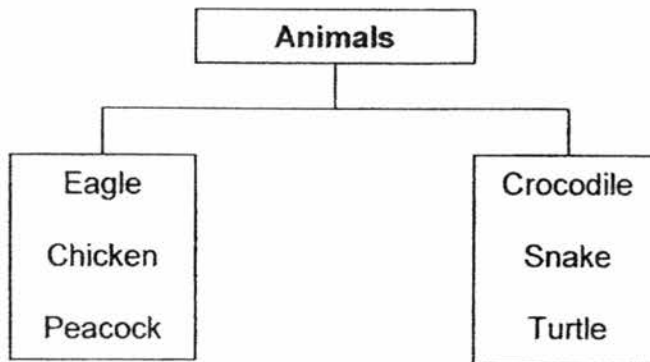
7 Study the diagram of the plant below.



Which of the plant part is not found in all plants?

- (1) fruit
- (2) leaf
- (3) root
- (4) stem

8 Study the classification chart below.



These animals are classified according to _____.

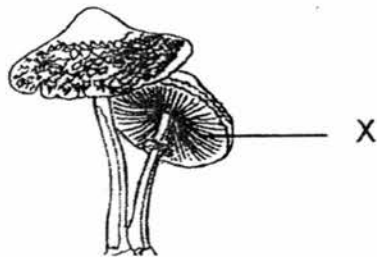
- (1) how they move
- (2) their number of legs
- (3) how they reproduce
- (4) their body covering

9 Which of the following statements are true about bacteria?

- A Bacteria are all harmful.
- B Bacteria need air to survive.
- C Bacteria cannot move by themselves.
- D Bacteria respond to changes around them.

- (1) A and B only
- (2) A and C only
- (3) B and D only
- (4) C and D only

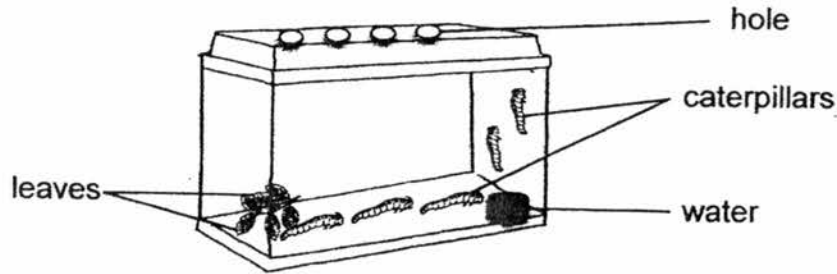
10 Study the diagram of a mushroom below.



What is the function of the part labelled X?

- (1) To make food for the mushroom
- (2) To contain spores for reproduction
- (3) To provide support for the mushroom
- (4) To protect the mushroom from its surrounding

- 11 Nathan placed 5 caterpillars in a container to conduct an experiment as shown below. He did not add or remove any caterpillars throughout the experiment.

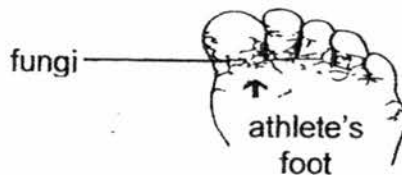


He recorded his observations in the table below.

Day	Number of caterpillars	Number of butterflies
1	5	0
15	5	0
30	0	5

Based only on the results, which of the characteristics of living things does this experiment show?

- (1) Living things can die.
 - (2) Living things can grow.
 - (3) Living things can move by themselves.
 - (4) Living things respond to changes around them.
- 12 Mr Low has an infection known as athlete's foot. It happens when fungi grow on the feet as shown in the picture below.



The doctor advised him to keep his feet dry so that the fungi cannot grow.

Which of the following characteristic of fungi did the doctor use to advise Mr. Low?

- (1) Fungi needs air to grow.
- (2) Fungi feed on dead matter.
- (3) Fungi needs water to grow.
- (4) Fungi can respond to changes around them.

13 The table below shows two groups of organisms.

Group X	Group Y
Balsam Hibiscus Sunflower	Moss Bird's Nest Fern Stag Horn's Fern

Which of the following shows the correct headings for groups X and Y?

	Group X	Group Y
(1)	Need air	Do not need air
(2)	Non-flowering plants	Flowering plants
(3)	Reproduce from seeds	Reproduce from spores
(4)	Can make its own food	Cannot make its own food

14 Julian spotted Animal A and Animal B in the field as shown in the diagram below.



Animal A



Animal B

He concluded that Animal B is an insect but Animal A is not.

Which of the following characteristic(s) of the two organisms helped him to conclude that only Animal B is an insect?

- A Number of legs
- B Number of body parts
- C Needs air, food and water to survive

- (1) A only
- (2) C only
- (3) A and B only
- (4) B and C only

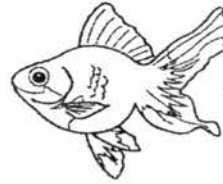
15 Eric had to classify the three animals shown.



snake

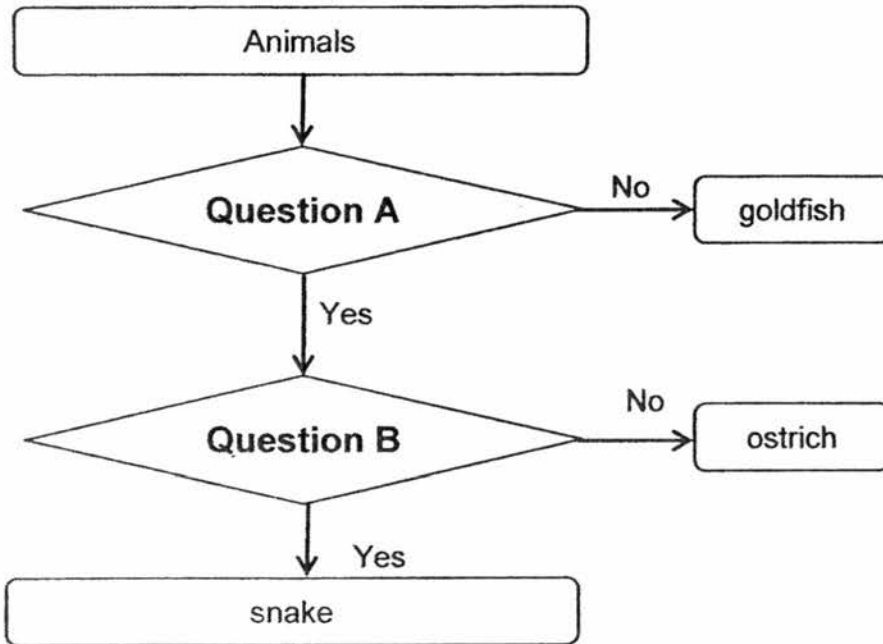


ostrich



goldfish

He classified them with the help of the flowchart below.



Which of the following is correct?

	Question A	Question B
(1)	Does it lay eggs?	Does it live on land?
(2)	Does it live on land?	Does it have scales?
(3)	Does it have scales?	Does it lay eggs?
(4)	Does it lay eggs?	Does it have scales?

End of Booklet A



MARIS STELLA HIGH SCHOOL (PRIMARY)

SEMESTRAL ASSESSMENT 1

SCIENCE

8 MAY 2017

BOOKLET B

NAME: _____ ()

CLASS: Primary 3 ()

6 Questions

20 Marks

Total Time for Booklets A & B: 1 hour

DO NOT OPEN THIS BOOKLET UNTIL YOU ARE TOLD TO DO SO.
FOLLOW ALL INSTRUCTIONS CAREFULLY.

BOOKLET A: _____ / 30

BOOKLET B: _____ / 20

TOTAL: _____ / 50

PARENT'S SIGNATURE: _____

For questions 16 to 21, write your answers in this booklet. The number of marks available is shown in brackets [] at the end of each question or part question. **(20 marks)**

16 Look at the pictures of two animals, A and B, below.



Animal A



Animal B

(a) Based on the pictures above, state one similarity between animals A and B. [1]

(b) Compare animals A and B in terms of where they live. [1]

(c) Which animal groups do animals A and B belong to? [1]

Animal	Animal Group
A	
B	

	3
--	---

- 17 Mark bought 10 guppies from the pet shop and kept them in a fish tank. He fed them daily and observed the number of guppies in the fish tank over 3 months. In the 3 months, he did not add or remove any live guppies from the fish tank. His observation is shown in the table below.

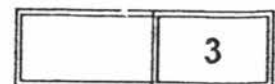
Month	Number of guppies
January	10
February	30
March	25

- (a) What happened to the number of guppies in the fish tank from January to February? [1]

- (b) State two characteristics of living things based on Mark's observation. [2]

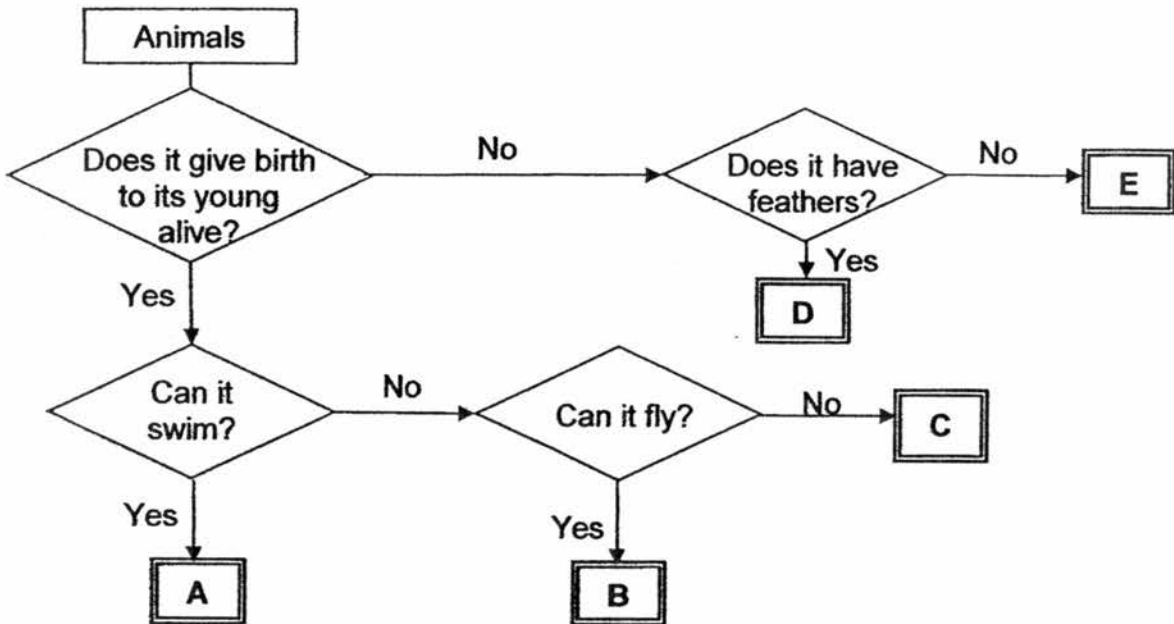
(i) _____

(ii) _____



(Go on to the next page)

18 Study the flow chart below.



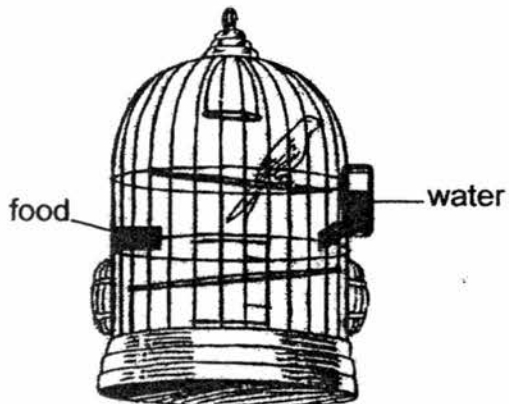
(a) Based on the flowchart above, state one difference between animals A and E. [1]

(b) Based on the flowchart above, state two similarities between animals B and C. [2]

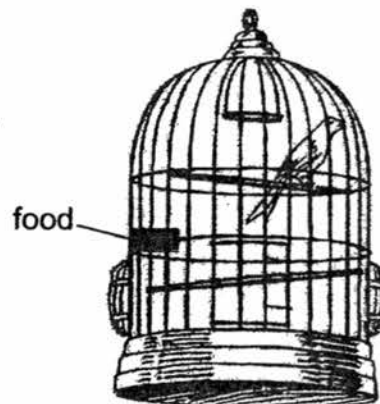
(c) Based on the flowchart above, describe Animal D. [1]

	4
--	---

19 Owen placed two birds, A and B, in two cages, as shown in the diagrams below.



Bird A

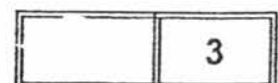


Bird B

(a) Which bird, A or B, will survive longer? [1]

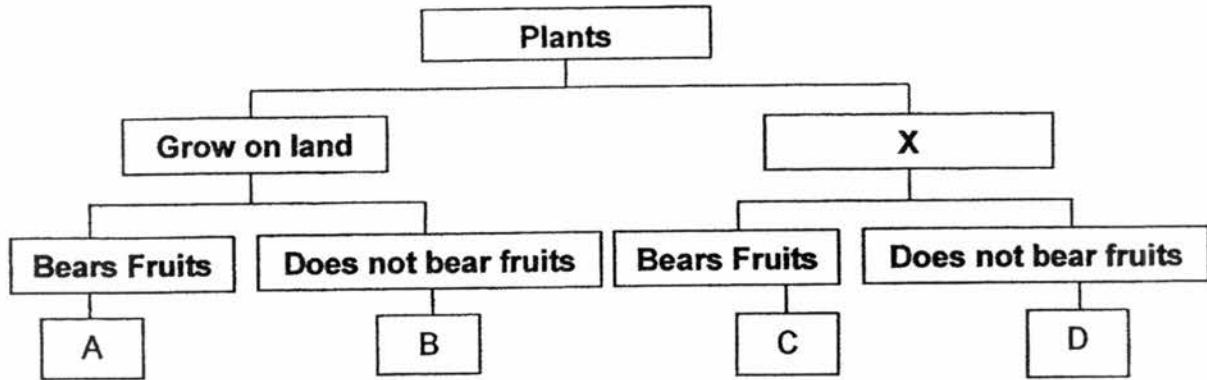
(b) Give a reason for your answer in (a). [1]

(c) What characteristic of living things does this experiment show? [1]



(Go on to the next page)

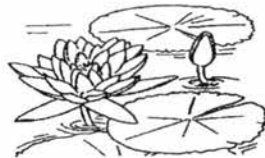
20 Study the classification chart below.



(a) What could heading X be? [1]

(b) State one similarity between plants A and B. [1]

The picture below shows the water lily plant.



Water lily

(c) Which plant, A, B, C or D, could the water lily be? [1]

(d) Can the toadstool be any of the plants above? Give a reason for your answer. [1]

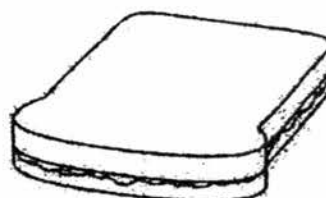
	4
--	---

(Go on to the next page)

- 21 Caden had two cheese sandwiches, A and B. He toasted only sandwich A and left both sandwiches on the kitchen table for a week. After one week, he found mould growing on one of the sandwiches.



**Sandwich A
(Toasted)**



**Sandwich B
(Not toasted)**

- (a) Which sandwich, A or B, did he most likely find mould growing on? [1]

- (b) Give a reason for your answer in (a). [1]

- (c) State the conditions needed for mould to grow. [1]

	3
--	---

EXAM PAPER 2017

LEVEL : PRIMARY 3
SCHOOL : Maris Stella High School (Primary)
SUBJECT : SCIENCE
TERM : SA1

Booklet A

Q1	Q2	Q3	Q4	Q5	Q6	Q7	Q8	Q9	Q10
1	3	3	2	3	4	1	4	3	2
Q11	Q12	Q13	Q14	Q15					
2	3	3	3	2					

Booklet B

- Q16 (a) Both has four legs.
(b) Animal A lives on land but Animal B lives on land and in water.
(c) **A: Mammals B: Amphibians**
- Q17 (a) The number of guppies increased.
(b)(i) Living things reproduce.
(ii) Living things die.
- Q18 (a) Animal A gives birth to young alive but E cannot.
(b) Both B and C cannot swim.
(c) Animal D does not give birth to young alive and has feathers.
- Q19 (a) Bird A.
(b) Birds need water to live. Bird A has water but Bird B does not have water.
(c) Living things need water to survive.
- Q20 (a) Grow in water.
(b) Both A and B grows on land.
(c) Plant C.
(d) No. Because toadstool is not a plant, it is a fungi.
- Q21 (a) Sandwich B
(b) Sandwich B would have mould growing on it because it has warmth, water and oxygen so mould can grow on Sandwich B.
(c) Warmth, water and oxygen.

END