

**SINGAPORE CHINESE GIRLS' SCHOOL
FIRST SEMESTRAL ASSESSMENT 2015**

SCIENCE

PRIMARY THREE

NAME: _____ () DATE: _____

CLASS: PRIMARY 3 SY / C / G / SE / P

BOOKLET A

15 questions

30 marks

Total time for Booklets A & B: 1 h

DO NOT OPEN THIS BOOKLET UNTIL YOU ARE TOLD TO DO SO.

FOLLOW ALL INSTRUCTIONS CAREFULLY.

Part I (15 x 2 marks)

For each question from 1 to 15, four options are given.
One of them is the correct answer. Make your choice (1, 2, 3 or 4).
Shade the correct oval (1, 2, 3 or 4) on the Optical Answer Sheet.

1. Benjamin wrote down the characteristics of a penguin as follows:

- A: It can grow.
- B: It has thick hair
- C: It needs air, food and water.
- D: It suckles its young with milk.

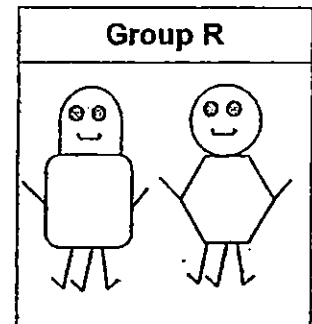
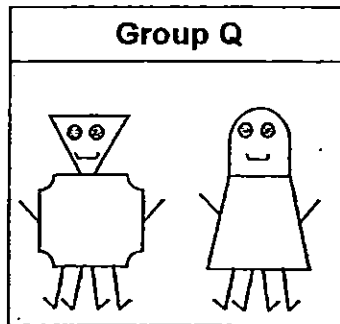
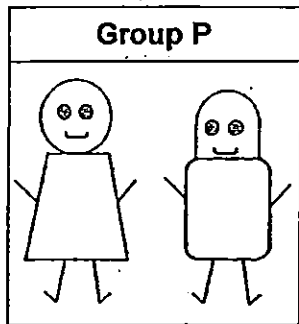


Penguin

Which of the above statements are correct?

- 1) A and C only
- 2) B and C only
- 3) A, B and C only
- 4) A, B and D only

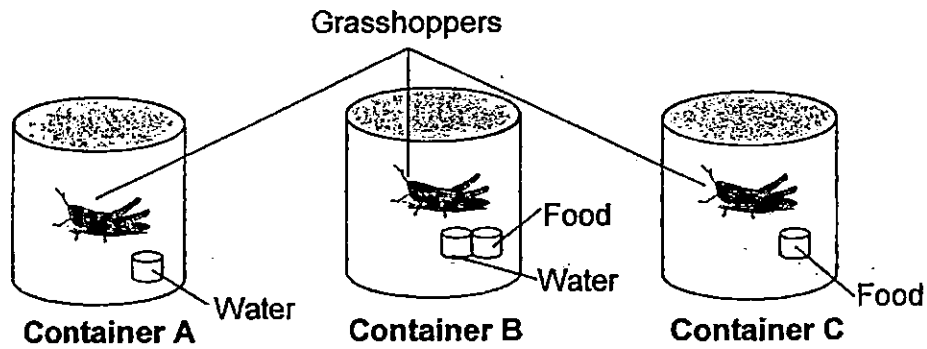
2. The robots below have been grouped according to their characteristics.



The robots were grouped according to their _____.

- 1) number of eyes
- 2) number of legs
- 3) shape of the head
- 4) type of body shape

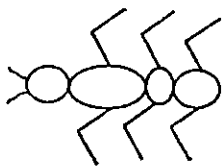
3. Jasmine set up Containers A, B and C as shown below for a week.



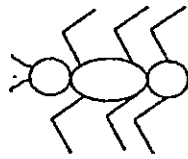
All 3 containers are sealed. What would happen to the grasshoppers after a week?

- 1) All the grasshoppers would die.
- 2) All the grasshoppers would still be alive.
- 3) Only the grasshoppers in container A and C will still be alive.
- 4) Only the grasshoppers in container B and C will still be alive.

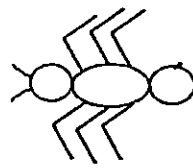
4. Which one of the diagrams below correctly represents an insect?



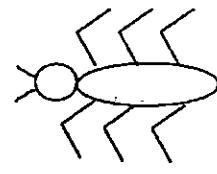
(1)



(2)

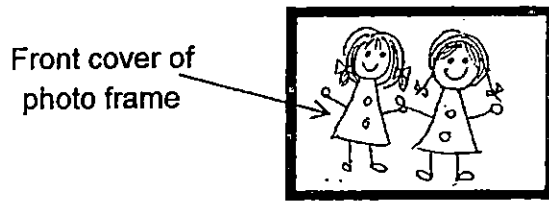


(3)

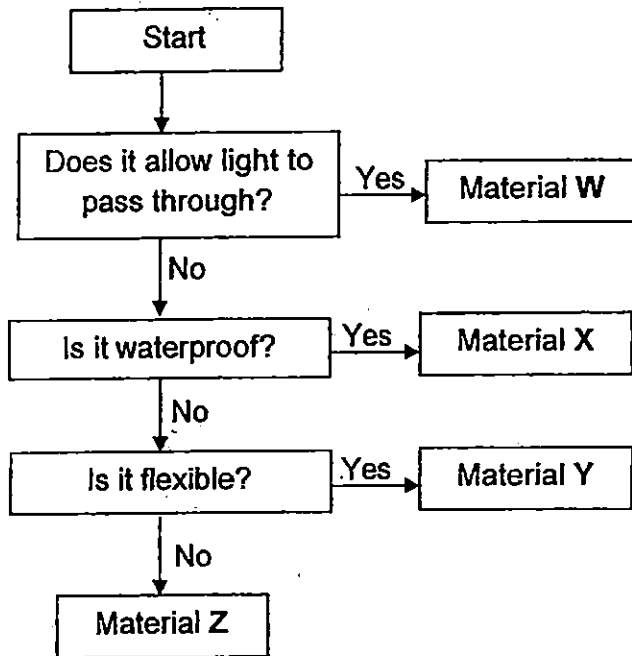


(4)

5. Janice wanted to choose a material to make the front cover of her photo frame.



The flowchart below shows the properties of materials W, X, Y and Z.



Based on the flowchart, which material can definitely be used as the front cover of the photo frame?

- 1) W
- 2) X
- 3) Y
- 4) Z

6. Susan divided the tray filled with earthworms into 2 equal parts. She then switched on the torchlight placed near Part X of the tray and observed where the earthworms went after some time.

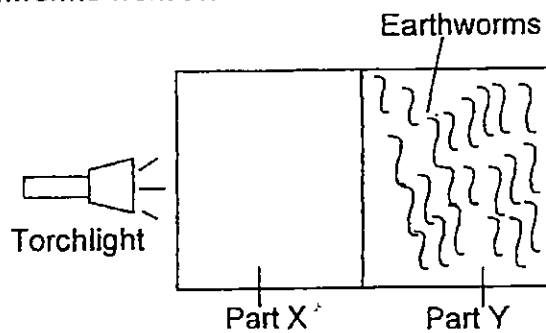






Diagram A

After sometime, she observed that all the earthworms went to Part Y of the tray as shown in Diagram A.

What can she conclude from her experiment?

- 1) Earthworms can reproduce.
- 2) Earthworms respond to changes.
- 3) Earthworms need water to stay alive.
- 4) Earthworms like to grow in bright places.

7. Study the 2 groups of organisms below carefully.

Group X	Group Y
 Bread mould	 Hen
 Mushroom	 Cockroach

Whose statements about Groups X and Y is/are correct?

Alice Group X and Y cannot make food.

Bill Group X does not grow but Group Y grows.

Cara Group X reproduces by spores but Group Y does not.

Daren Group X can move from place to place but Group Y cannot.

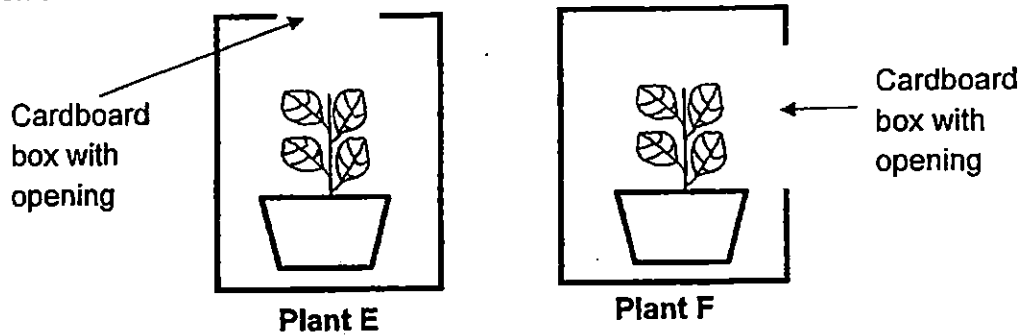
1) Cara only

3) Alice and Cara only

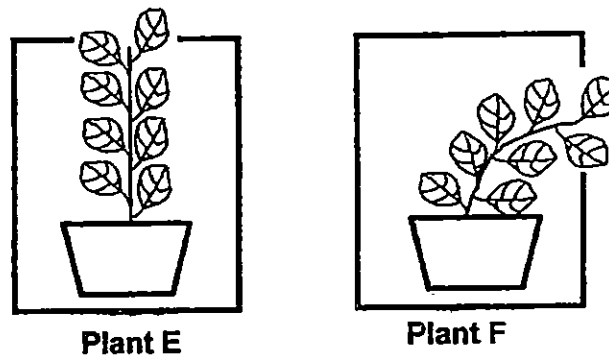
2) Bill and Cara only

4) Cara and Daren only

8. Kelly grew 2 similar plants E and F in 2 cardboard boxes as shown below. The boxes had different openings. She placed the plants under the sun and watered them.



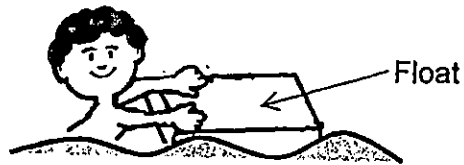
2 weeks later, she observed the 2 plants as shown below.



Based on her experiment, which one of the following statements is true?

- 1) Plants only need water to grow well.
- 2) Plants only need sunlight to grow well.
- 3) Plants moves towards the opening of the box because there is water.
- 4) Plants moves towards the opening of the box because there is light.

9. Miss Lee wanted to find out if material P was suitable for making a swimming float as shown below.



Which of the questions below should Miss Lee choose to find out if Material P is suitable for making a float?

- A: Is it water proof?
- B: Does it sink in water?
- C: Does it allow light to pass through?

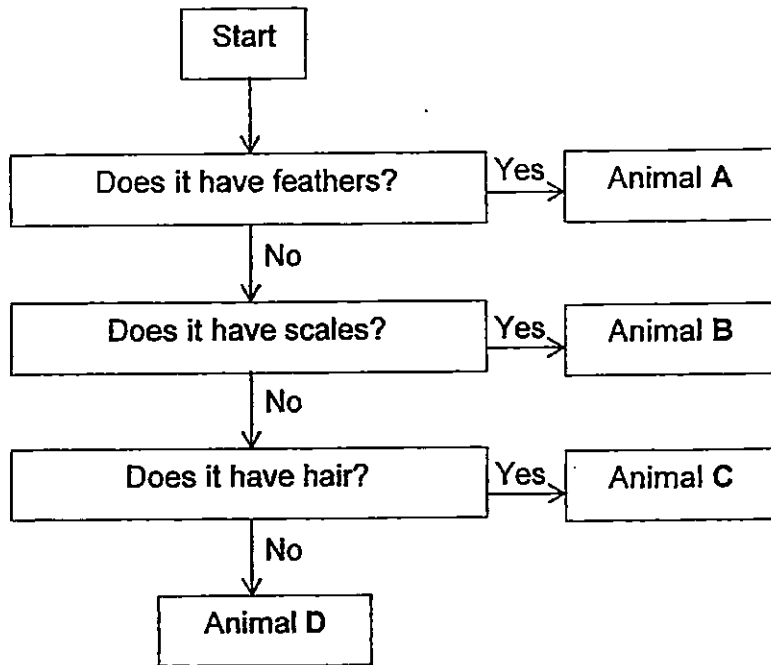
- 1) A and B only
- 2) A and C only
- 3) B and C only
- 4) A, B and C

10. Which of the following statement(s) about plants is/are correct?

- Alison: Flowering plants produce spores.
- Ben: Flowering plants reproduce by seeds.
- Ceris: Non-flowering plants do not bear fruits.
- Danny: Non-flowering plants reproduce by seeds.

- 1) Ceris only
- 2) Ben and Ceris
- 3) Alison and Ceris
- 4) Ben and Danny

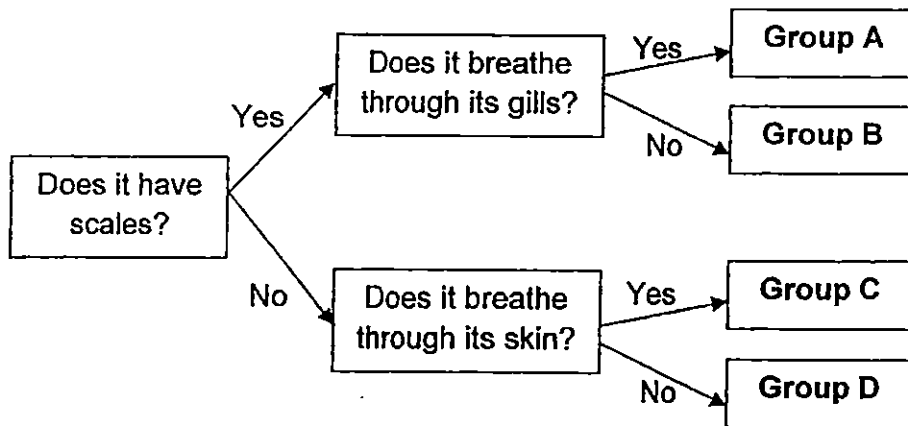
11. Study the flowchart below carefully.



Based on the flowchart above, which animal, A, B, C or D best represents a mammal?

- 1) Animal A
- 2) Animal B
- 3) Animal C
- 4) Animal D

12. Study the flowchart of animals in groups, A, B, C and D as shown below carefully.

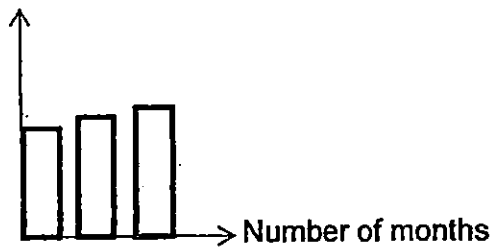


Based on the flowchart above, which of the following is correct?

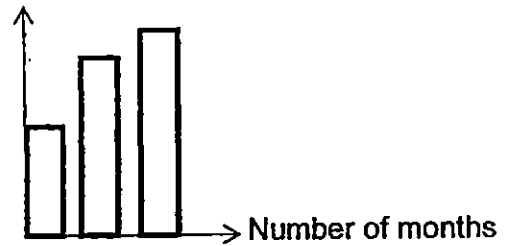
- 1) Group A animals are mammals.
- 2) Group B animals are fish.
- 3) Group C animals are amphibians.
- 4) Group D animals are reptiles.

13. The 2 graphs below shows the height of plants A and B over 3 months. The 2 plants were placed in the same location and watered regularly with the same amount of water.

Height of Plant A



Height of Plant B



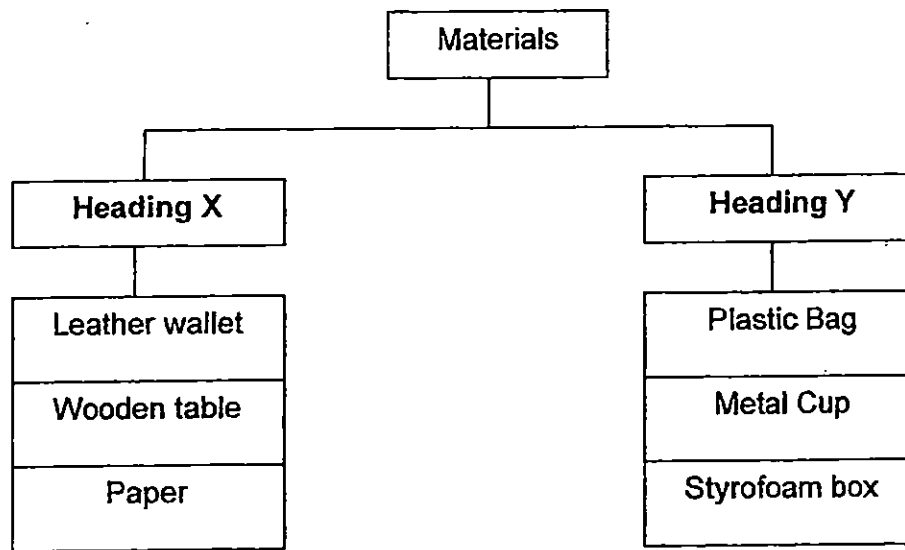
Based on the graphs above, which one of the following statements is true?

- 1) Only Plant B can grow.
 - 2) Plant A grew less than plant B.
 - 3) Plant A received less water than plant B.
 - 4) Plant A can make food but plant B cannot.
14. Marissa doesn't know any of the plants in the Science garden but her teacher asks her to look for a plant that matches the description given below. Which of the 2 following descriptions will be useful for Marissa to find the plants quickly?

- A: The roots grow deep into the soil.
- B: It has big and hairy leaves.
- C: It is shorter than 1 metre.
- D: Its leaves are poisonous.

- 1) A and B only
- 2) B and C only
- 3) C and D only
- 4) B and D only

15. Study the classification table below.



Which of the following shows correct headings for X and Y?

	Heading X	Heading Y
1)	Flexible	Not flexible
2)	Breakable	Unbreakable
3)	Made from plants	Made from animals
4)	Made from things once alive	Made from things never alive

**SINGAPORE CHINESE GIRLS' SCHOOL
FIRST SEMESTRAL ASSESSMENT 2015**

SCIENCE

PRIMARY THREE

NAME: _____ ()

DATE: _____

CLASS: PRIMARY 3SY / C / G / SE / P

Booklet A		30
Booklet B		20
Total		50

Parent's Signature _____

BOOKLET B

7 questions

20 marks

Total time for Booklets A & B: 1 h

DO NOT OPEN THIS BOOKLET UNTIL YOU ARE TOLD TO DO SO.

FOLLOW ALL INSTRUCTIONS CAREFULLY.

Part II (20 marks)

Answer all the following questions.

16. Use a ruler and a pencil to draw straight lines to match the living things to the correct characteristics of its group. (2m)

Group A
They are so tiny that they can only be seen under a microscope.

Bacteria

Group B
They reproduce by spores and cannot make food.

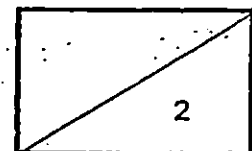
Dog

Group C
They make their own food.

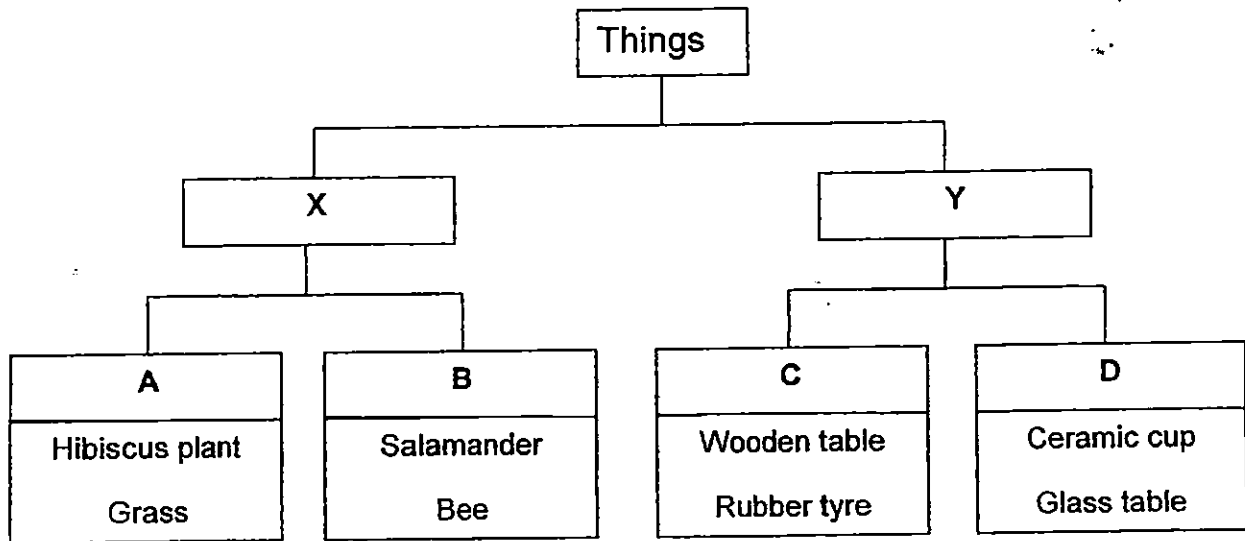
Bird's nest fern

Group D
They cannot make food but can move about freely by themselves.

Mushroom



17. Study the classification table below carefully.



a) Give suitable headings for Group X and Y. (1m)

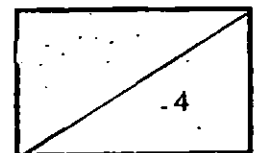
X: _____

Y: _____

b) In which group, A and B, would you place a monkey? (1m)

c) Put a cross (x) for wrong headings and put a tick (✓) for the correct headings for Group C and D (2m)

	Group C	Group D	Tick (✓) or Cross (X)
i)	Sink	Float	
ii)	Not easily breakable	Easily breakable	
iii)	Flexible	Not flexible	
iv)	Made from things once alive	Made from things never alive	



18. Study cups S and T below carefully.
(Do not compare the size and shape of the cups.)



Cup S



Cup T

- a) Based on what you can see only, state 1 similarity between Cup S and Cup T. (1m)

- b) Based on what you can see only, state 1 difference between Cup S and Cup T. (1m)

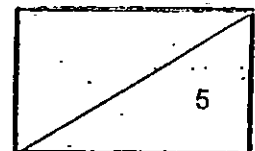
19. Jane recorded the amount of water that each material A, B, C and D can absorb in the table below.

Material	Amount of water absorbed
A	0 ml
B	25 ml
C	32 ml
D	50 ml

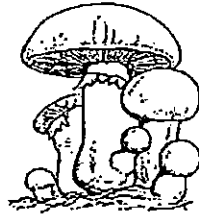
- a) Which material is most suitable for making a raincoat?(1m)

- b) Explain your choice in (a). (1m)

- c) Which material is the best for making a towel?(1m)



20. Study the 2 diagrams below carefully.



Mushroom



Fern

a) Which group of living things does the mushroom belong to? (1m)

b) Read the statements below about the mushroom and the fern carefully and put a tick (✓) in the appropriate column to indicate if each statement is true or false. (3m)

	Statement	True	False
i)	Both are non-flowering plant.		
ii)	Only the fern can make food.		
iii)	The mushroom reproduces by spores but the fern reproduces by seeds.		

21. Lana has a glass bottle and a plastic bottle. Her mother asked her to bring the plastic bottle to school instead of the glass bottle.



Water bottle

Explain why Lana's mother asked her to bring the plastic bottle instead of the glass bottle. (1m)

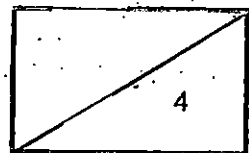
22. Study the table below carefully.

Characteristics	Animal A	Animal B	Animal C	Animal D
Can it fly?	Yes	Yes		
Does it have hair?			Yes	Yes
Does it lay eggs?	Yes	Yes	Yes	
Does it have 3 body parts?		Yes		

a) Based on the above table, describe Animal B (2m)

b) Based on the above table, state 1 difference between Animal C and Animal D. (1m)

c) Which animal, A, B, C or D, most likely represents a bird? (1m)





P3 Science SA1 2015 Model Answers

Section A

1) 1	6) 2	11) 3
2) 2	7) 3	12) 3
3) 1	8) 4	13) 2
4) 3	9) 1	14) 2
5) 1	10) 2	15) 4

Section B

Qn. No.	Answers			
16				
17a	X: Living Things Y: Non-living things			
17b	B			
17c		Group C	Group D	Tick (✓)
	i)	Float	Sink	x
	ii)	Not easily breakable	Easily Breakable	✓
	iii)	Flexible	Not flexible	x
	iv)	Made from things once alive	Made from things never alive	✓
18a	Both have a handle.			
18b	Cup S has dots but Cup T has stripes.			
19a	Material A			
19b	It does not absorb water.			
19c	Material D			
20a	Fungi			
20b		Statement	True	False
	i)	Both are non-flowering plant.		✓
	ii)	Only the fern can make food.	✓	
	iii)	The mushroom reproduces by spores but the fern reproduces by seeds.		✓
21	The plastic bottle will not break easily but the glass bottle will break easily.			
22a	Animal B can fly, lay eggs and has 3 body parts but does not have hair.			
22b	Animal C lay eggs but Animal D does not.			
22c	A			