



**PEI HWA PRESBYTERIAN PRIMARY SCHOOL
SEMESTRAL ASSESSMENT 1**

**PRIMARY 3
SCIENCE
(BOOKLET A)**

15 MAY 2015

Name: _____ ()

Class: 3 . _____

Total time for Booklets A and B: 1 h

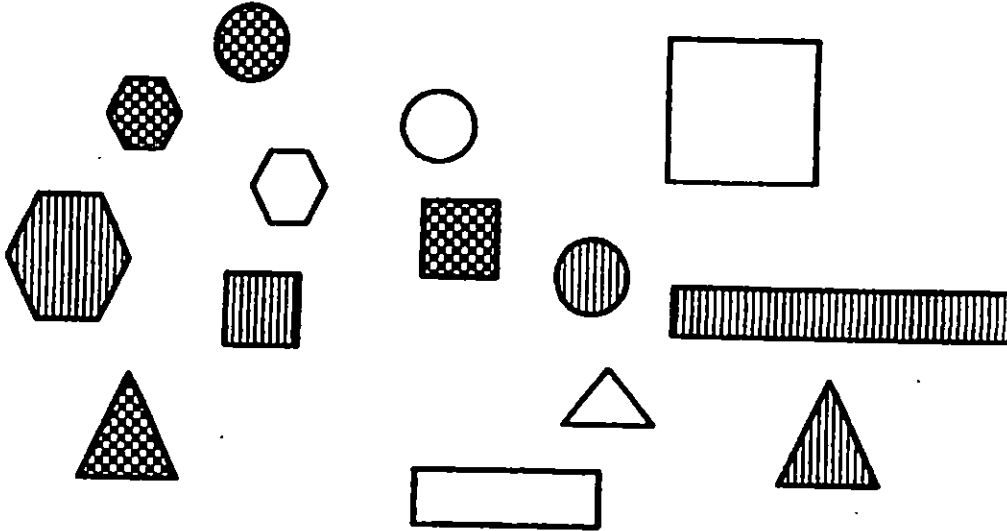
INSTRUCTIONS TO CANDIDATES

1. Write your Name, Class and Register No. in the spaces provided above.
2. DO NOT turn over this page until you are told to do so.
3. Follow all instructions carefully.
4. Answer all questions.
5. Shade your answers on the Optical Answer Sheet (OAS) provided.

This booklet consists of 13 printed pages, excluding the cover page.

For each question, from 1 to 15, four options are given. Only one of them is correct. Make your choice (1, 2, 3, or 4) shade the correct oval (1, 2, 3, or 4) on the Optical Answer Sheet. (30 marks)

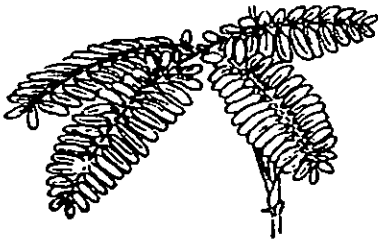
1. The following are 14 different objects.



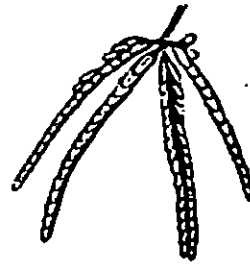
Sandy wants to classify the above objects based on their shapes. How many groups will she have in her classification chart?

- (1) 3
- (2) 5
- (3) 14
- (4) 15

2. The diagrams below show the leaves of a plant that Gina observed before she touched them and after she touched them.



Leaves before
Gina touched

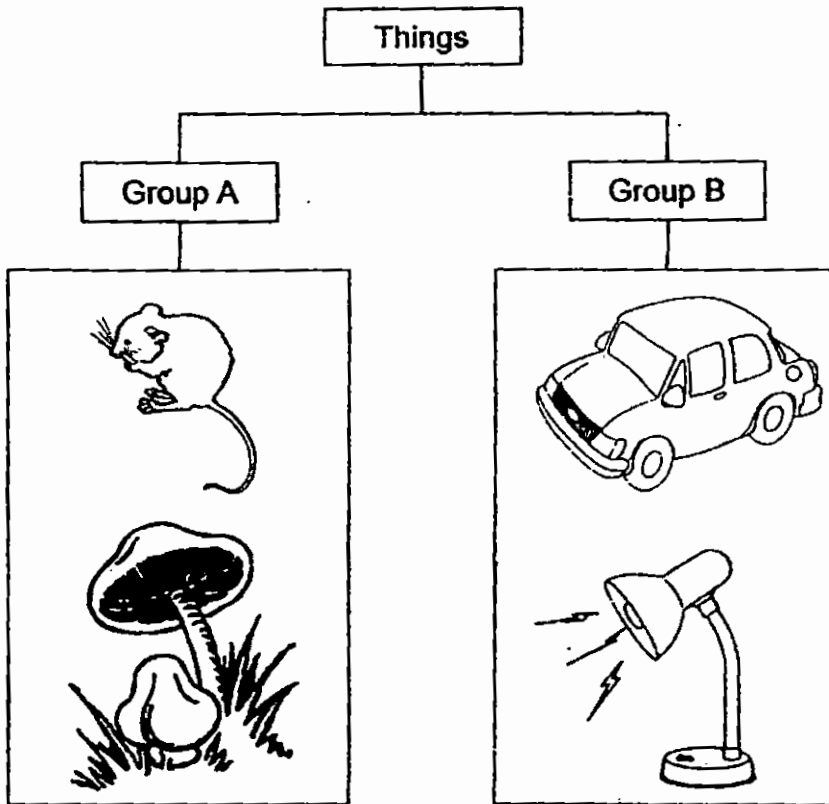


Same leaves after
Gina touched

Which characteristic of living things is shown by what Gina observed?

- (1) Living things can grow.
- (2) Living things can move by themselves.
- (3) Living things need air, food and water to survive.
- (4) Living things can respond to changes around them.

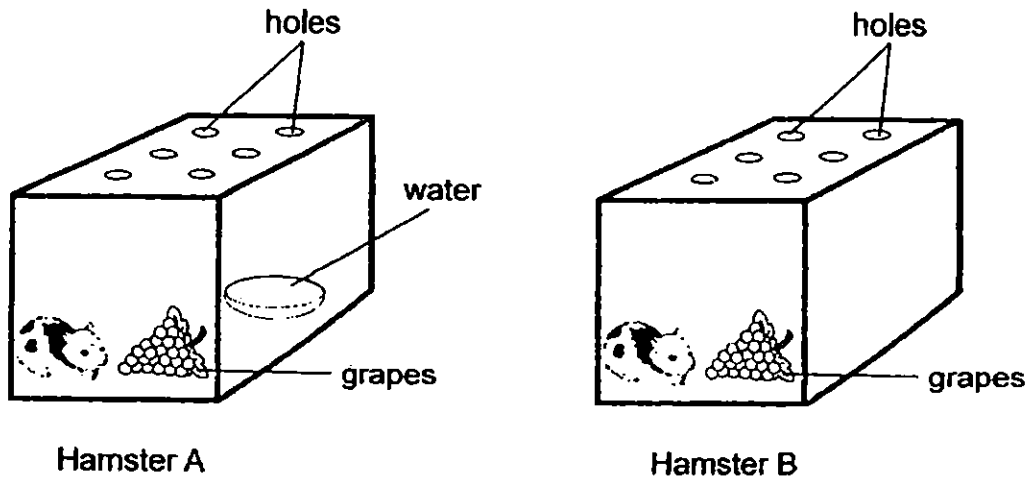
3. The diagram below shows how some things have been classified.



Which of the following things can be classified under Group A?

- (1) clock
- (2) pencil
- (3) computer
- (4) caterpillar

4. Study the following diagrams with two hamsters, Hamster A and Hamster B.



Each hamster is given the same amount of food shown above every day. Which hamster can live longer? Why?

- (1) Hamster A. It has air.
- (2) Hamster A. It has food, air and water.
- (3) Hamster B. It has food.
- (4) Hamster B. It has food, air and water.

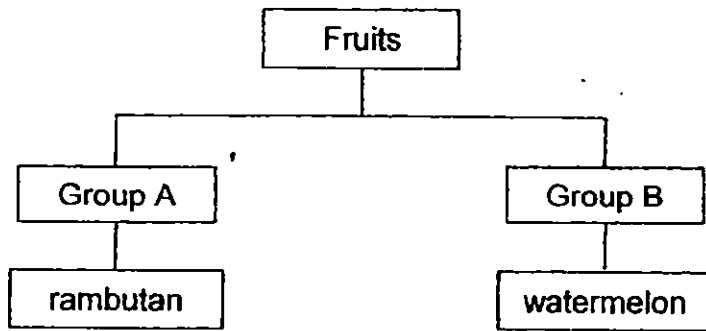
5. The table below shows the characteristics of 2 things, A and B. A tick (✓) means that the characteristic is observed while a cross (X) means that the characteristic is not observed.

Things	Characteristics		
	Can grow	Can reproduce	Can move
A	✓	✓	✓
B	X	X	✓

Based on the table above, which of the following best represents A and B?

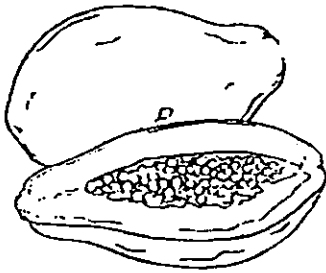
	A	B
(1)	dog	tree
(2)	rock	mouse
(3)	whale	aeroplane
(4)	spider	lamp post

6. The classification chart below shows fruits classified based on the number of seeds.



Which of the following fruits below could be classified under Group B?

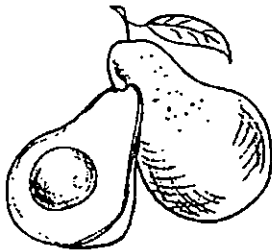
(1)



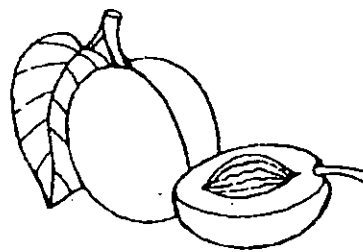
(2)



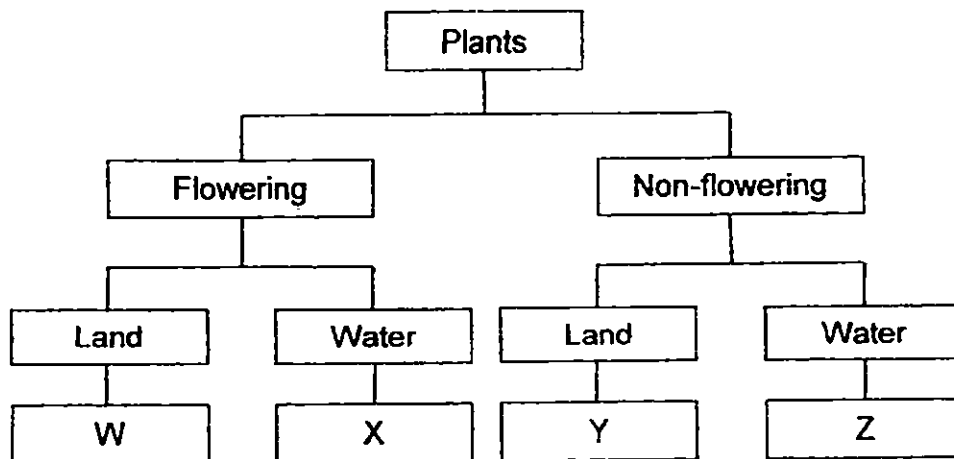
(3)



(4)



7. Four plants, W, X, Y and Z, are classified in the classification chart below.



Based on the classification chart above, which of the following plants is a non-flowering land plant?

- (1) W
- (2) X
- (3) Y
- (4) Z

8. The diagrams below show two living things.



Jasmine

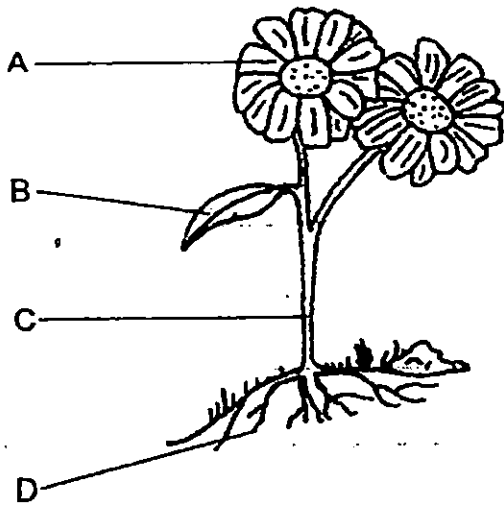


Bird's nest fern

Based on the diagrams shown above, which of the following statements is true?

- (1) Jasmine is a plant but the bird's nest fern is a fungi.
- (2) Jasmine and bird's nest fern are non-flowering plants.
- (3) Jasmine and bird's nest fern cannot make their own food.
- (4) Jasmine can produce fruits and bird's nest fern can produce spores.

9. The diagram below shows a plant.



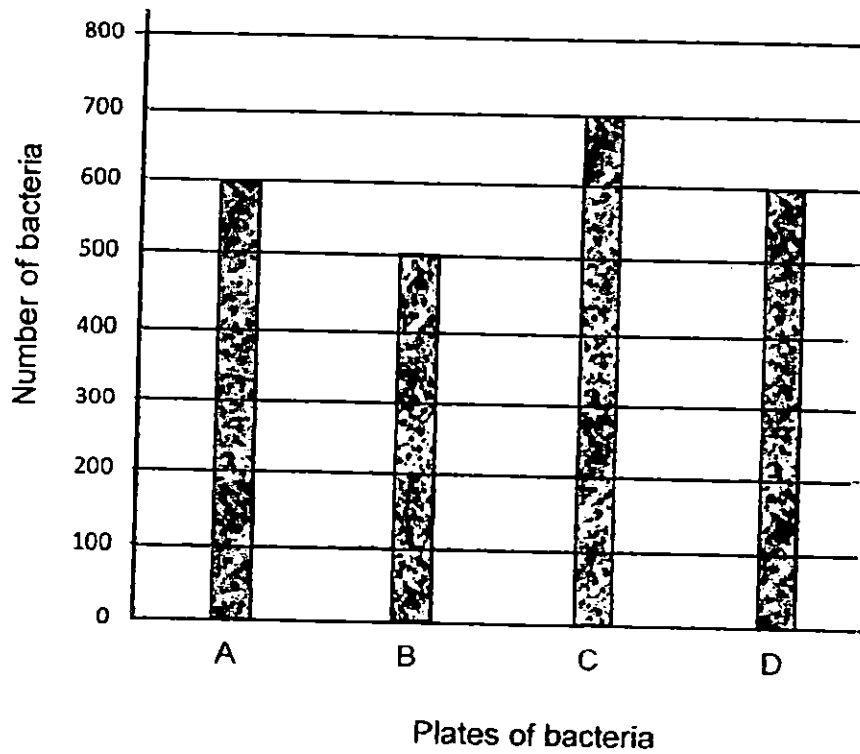
Which part of the plant, A, B, C or D, is the root?

- (1) A
- (2) B
- (3) C
- (4) D

10. Which one of the following statements about bacteria is true?

- (1) All bacteria are harmful.
- (2) All bacteria are microorganisms.
- (3) All bacteria have the same shape.
- (4) Bacteria can be found in some places only.

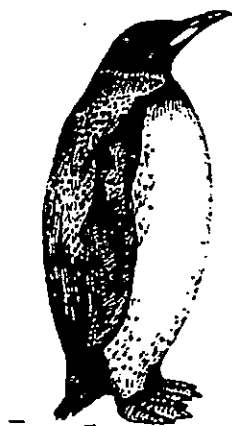
11. Samy grew 4 different types of bacteria on 4 plates, A, B, C and D. All plates contained the same number of bacteria in the beginning. After some time, he counted the number of bacteria on each plate and recorded his results in the graph below.



Based on the graph above, which plate of bacteria, A, B, C or D, grew the fastest?

- (1) A
- (2) B
- (3) C
- (4) D

12. Ali sketched an animal, Animal X, in his journal as shown below.



Animal X

He made some notes about Animal X as follows:

- A It has wings.
- B It cannot fly.
- C It has feathers.
- D It can move in water and on land.

Which of the above statements could he use to identify the group of animals that Animal X belongs to?

- (1) C only
- (2) D only
- (3) A and C only
- (4) B and D only

13. Which one of the following animals does not have the same outer covering as the others?

(1)



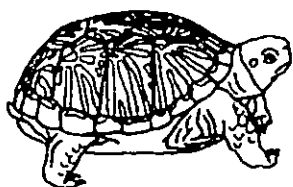
salamander

(2)



snake

(3)



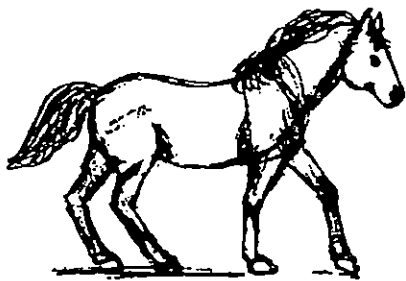
turtle

(4)



lizard

14. Brian decided to group the following animals into one group.



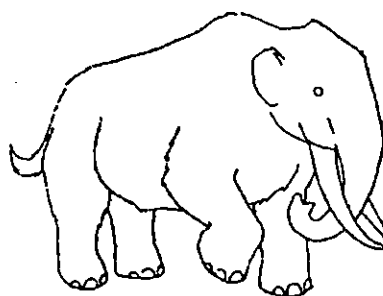
Animal A



Animal B



Animal C



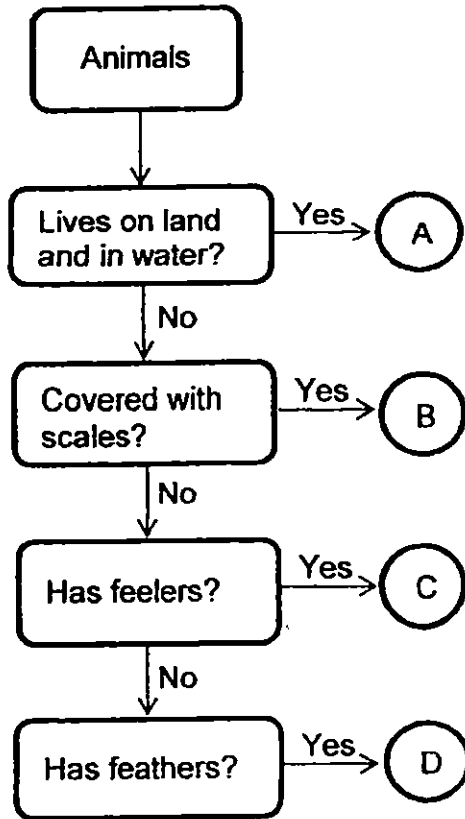
Animal D

Xiao Wei said that the animals could be grouped in a different way. She then separated Animal B from the rest of the animals.

Which of the following statements best describes why Xiao Wei did so?

- (1) Animal B gives birth but the others lay eggs.
- (2) Animal B produces milk but the others do not.
- (3) Animal B is a fish but the others are mammals.
- (4) Animal B lives in water but the others live on land.

15. Study the flow chart below.



Which letter, A, B, C or D, in the flow chart above represents a cockroach?

- (1) A
- (2) B
- (3) C
- (4) D



PEI HWA PRESBYTERIAN PRIMARY SCHOOL
SEMESTRAL ASSESSMENT 1

PRIMARY 3
SCIENCE
(BOOKLET B)

15 MAY 2015

Name: _____ ()

Class: 3 _____

Parent's Signature

Total time for Booklets A and B: 1 h

INSTRUCTIONS TO CANDIDATES

1. Write your Name, Class and Register No. in the spaces provided above.
2. DO NOT turn over this page until you are told to do so.
3. Follow all instructions carefully.
4. Answer all questions.
5. Write all your answers in this booklet.

Marks (Booklet A) :	30
Marks (Booklet B) :	20
Total Marks (Booklets A & B) :	50

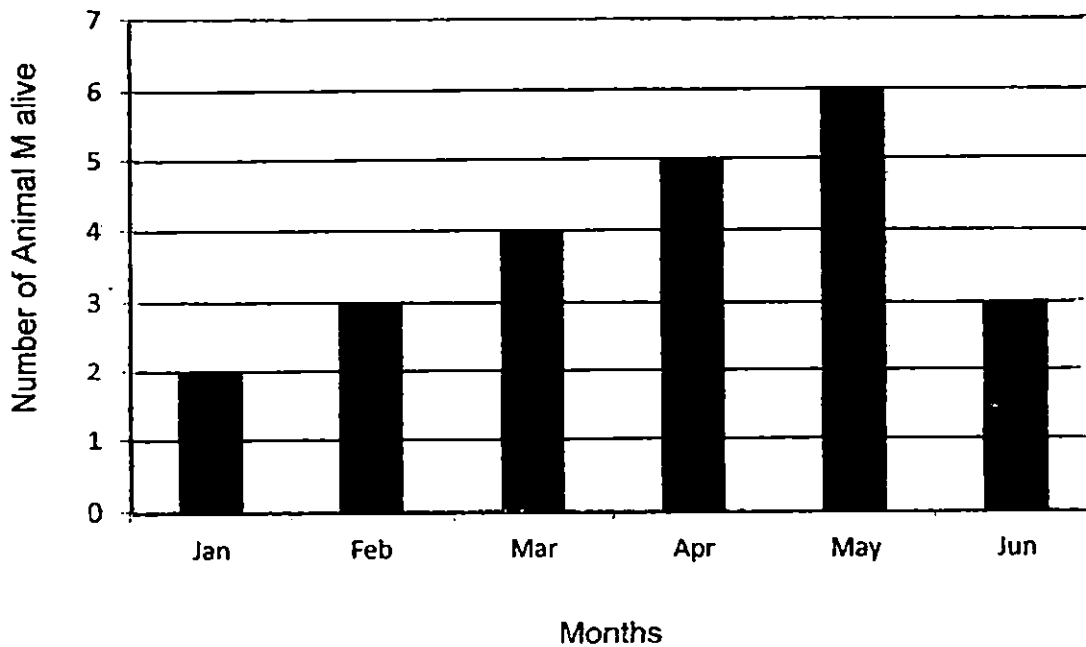
This booklet consists of 7 printed pages, excluding the cover page.

For questions 16 to 22, write your answers in this booklet.
The number of marks available is shown in brackets [] at the end of each question
or part question. (20 marks)

16. Write 'T' for every true statement and 'F' for every false statement in the column provided. [2]

	Statements	T or F
a)	All fruits are edible.	
b)	Plants can make their own food.	
c)	All animals depend only on plants for food.	
d)	Flowering plants can only live on land.	

17. Hannah left two Animal M in a cage over a period of time. She fed them with the same amount of food and water every day. The bar graph below shows the number of Animal M alive in the cage over six months.

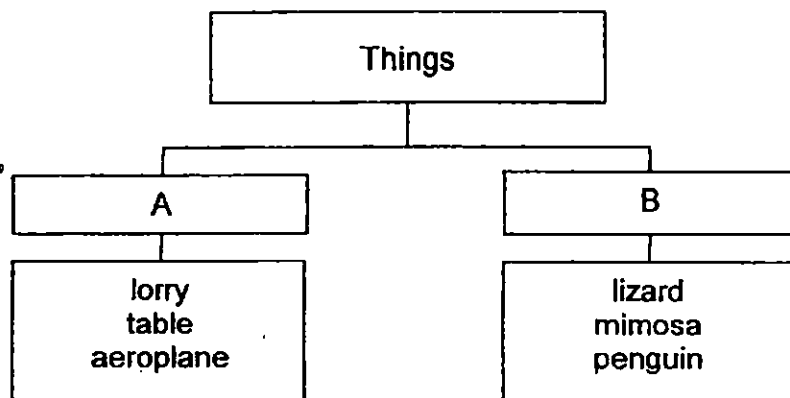


- (a) Based on the graph, what do you notice about the number of Animal M from January to May? [1]

- (b) Give a reason for your answer in (a). [1]

- (c) Based on the information given above, explain why there is a decrease in the number of Animal M alive in the month of June. [1]

18. The following classification chart shows how 6 things can be classified.

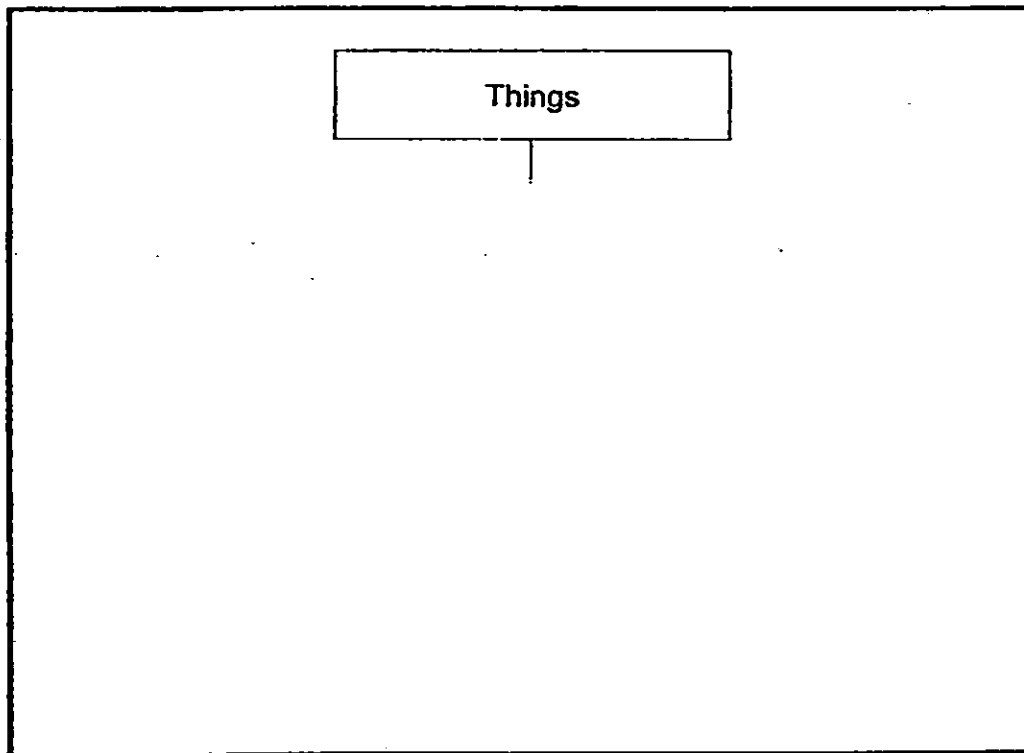


(a) Give a suitable sub-heading for A and B. [1]

A: _____

B: _____

(b) The 6 things can be re-classified in another way. Draw a classification chart in the space below to show how the 6 things can be re-classified. [1]



19. Rudy wanted to find out the conditions of mould growth on bread. He conducted an experiment with similar slices of bread each placed on a table as shown below.

	Bread A	Bread B	Bread C	Bread D
Place	air-conditioned room	air-conditioned room	non-airconditioned room	non-airconditioned room
Condition of bread	Toasted	Not toasted	Toasted	Not toasted

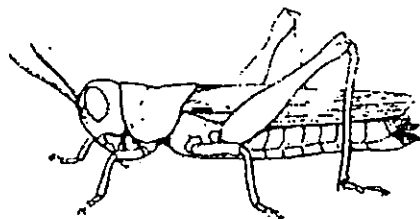
- (a) Which bread would likely have mould growing on it first and which bread would not have mould growing on it? [1]

(i) First bread to turn mouldy : _____

(ii) The bread that does not turn mouldy : _____

- (b) Explain your answer in (a) (ii). [2]

20. Study the diagram of an animal below.



- (a) In which group of animals would you place the animal above? [1]

- (b) Which physical characteristic of the animal above supports your answer in (a)? [1]

21. Sally observed three plants, A, B and C, and recorded her observation in the table below.

Characteristics of plants	Plants		
	A	B	C
Has flowers?	Yes	Yes	No
Has green leaves?	Yes	Yes	Yes
Floating water plant?	Yes	No	Yes

- (a) Based on the information given in the table above, state all the characteristics of Plant A. [1]

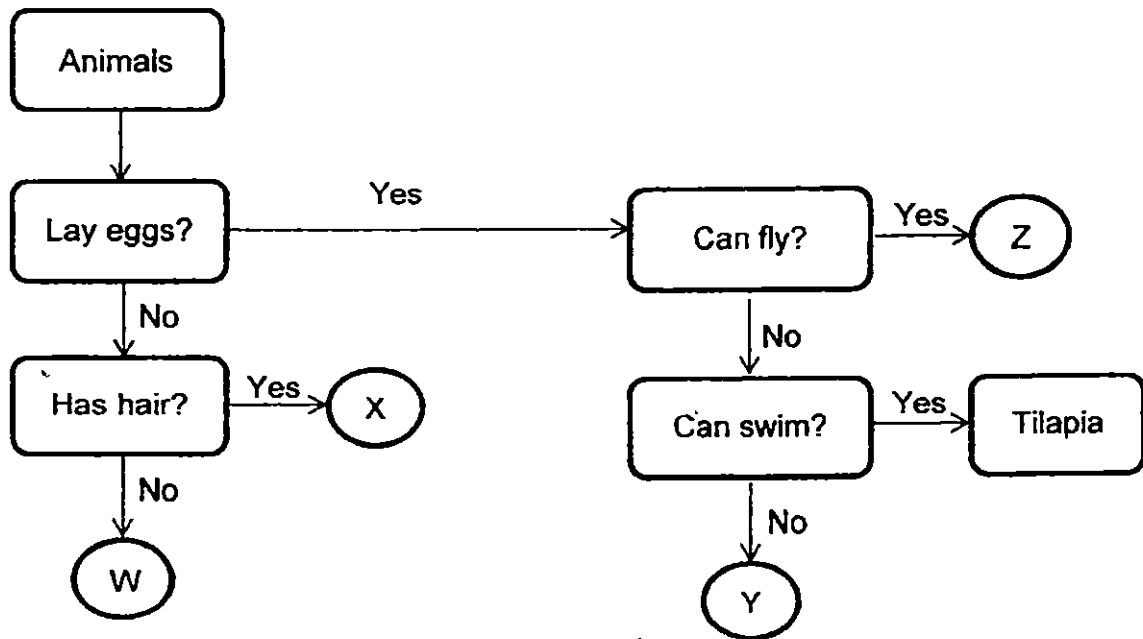
- (b) Which plant, A, B or C, can a water moss be? [1]

- (c) State a difference between Plant B and Plant C. [1]

- (d) Based on the table above, Sally said that Plant C is a non-flowering plant.

Do you agree? Explain your answer. [1]

22. (a) Study the flow chart on four animals, W, X, Y and Z below

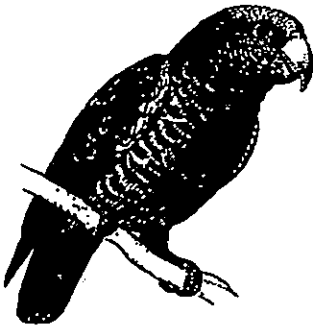


(i) State one similarity between animal Y and animal Z. [1]

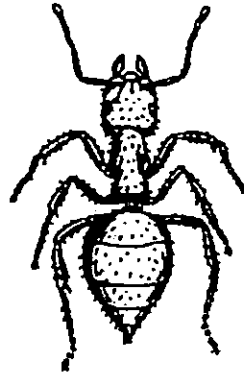
(ii) Which letter, W, X, Y or Z, in the above flow chart best represents a chicken? [1]

Question 22 continues on page 20

(b) Study the diagrams of two animals, Animal A and Animal B, below.



Animal A



Animal B

- (i) Based on the above diagrams, state one similarity in the physical characteristic between Animal A and Animal B. [1]

- (ii) Based on the above diagrams, state one difference in the physical characteristic between Animal A and Animal B. [1]

End of paper



EXAM PAPER 2015

LEVEL : PRIMARY 3

SCHOOL : PEI HWA PRESBYTERIAN PRIMARY SCHOOL

SUBJECT : SCIENCE

TERM : SA1

Q 1	Q 2	Q 3	Q 4	Q 5	Q 6	Q 7	Q 8	Q 9	Q 10
1	4	4	2	3	1	3	4	4	2
Q 11	Q 12	Q 13	Q 14	Q 15					
3	1	3	4	3					

Q16. a) F b) T c) F d) F

Q17.a) There was a increase of Animal M.

b) Animal M may have reproduced and gave brith.

c) Animal M died as there as not enough food.

Q18. a) A: Non-Living things B: Living things

b) *no model answer, logical answers are accepted*

Q19. a) i) Bread D ii) Bread A

b) Mould needs dark and humid environment to grow. In an air-conditioned room, there is no moisture in the air therefore, mould will not grow.

Q20. a) I would place it in the group called insects.

b) The animal has a pair of feelers, three body segments and six legs.

Q21. a) Plant A has flowers, green leaves and it floats on water.

b) Plant C can be a water moss.

c) Plant B has flowers while Plant C does not produce flowers.

d) No, I do not agree with Sally. The plant may not have flowers as they have not developed yet.

Q22. a) i) Both Animal Y and Z reproduce by laying eggs.

ii) Y best represents a chicken.

b) i) Both have a pair of eyes.

ii) Animal A has a beak whereas Animal B does not have.