



Pei Hwa Presbyterian Primary School
First Semestral Assessment – 2011

Science
Primary 3

(Time: 1 hour 30 minutes)

Booklet A	/ 60
Booklet B	/ 40
Total	/ 100

Name: _____ ()

Class: _____ ()

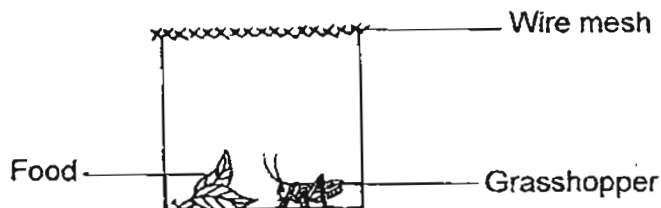
Date : _____

Parent's Signature: _____

Booklet A (30 X 2 marks = 60 marks)

For each of the questions from 1 to 30, four options are given. One of them is the correct answer. Make your choice (1, 2, 3 or 4). Shade the correct oval (1, 2, 3 or 4) on the Optical Answer Sheet provided.

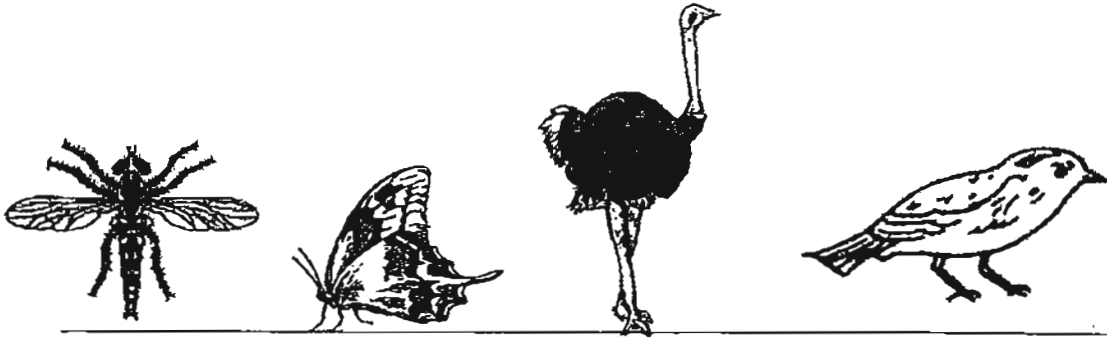
- 1 Which one of the following statements does not show a characteristic of living things?
- (1) A sunflower withering.
 - (2) A ball rolling down the staircase.
 - (3) A hermit crab retreating into its shell when touched.
 - (4) John was sweating because the weather was warm.
- 2 A grasshopper was placed in a jar with a wire mesh over it. It was placed near the window and was given food every day. After 2 weeks, it died.



Why did the grasshopper die? There was _____.

- (1) no water
- (2) no sunlight
- (3) insufficient air
- (4) not enough room for the grasshopper to move around

3 Look at the four animals carefully.



What is the characteristic that they all have in common?

They _____.

- (1) have fur
- (2) can jump
- (3) have wings
- (4) have feathers

4 Look at the list of objects below.

Stone Comb Clock Optical mouse

These objects are non-living things because they _____.

- A can grow
 - B will not die
 - C do not need air
 - D do not reproduce
- (1) A and B only
 - (2) A, B and C only
 - (3) B, C and D only
 - (4) All of the above

5 Study the classification table below carefully.

Living things	Non-living things
Sheep Woollen jacket Papaya tree Doll	Cloud Stonefish Newspaper Rock

Which of the above items have been classified incorrectly?

- (1) Doll and cloud only
- (2) Doll and stonefish only
- (3) Woollen jacket, doll and stonefish only
- (4) Woollen jacket, cloud and stonefish only

6 Which one of the following examples does not show that living things respond to changes around them?

- (1) Fire gets bigger when wind blows.
- (2) A plant growing in the direction of the sun.
- (3) A bird flying away when being chased by a cat.
- (4) Water lily opening its flowers in the day and closing them at night.

7 Peter went to the zoo with his family. He spotted a tree and a lion and was discussing about the difference between a lion and a tree with his father. Which one of the following comparisons is correct ?

	Tree	Lion
(1)	Can grow	Cannot grow
(2)	Does not need air to survive	Needs air to survive
(3)	Does not respond to changes	Responds to changes
(4)	Can make its own food	Cannot make its own food

8 Which one of the following animals gives birth to its young alive?

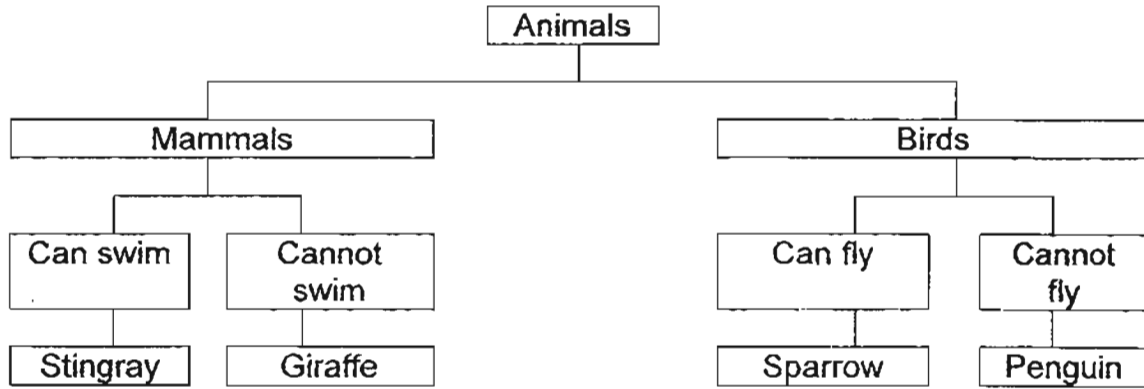
- (1) Seal
- (2) Eagle
- (3) Penguin
- (4) Spiny anteater

9 Which of the following statements about the dolphin and the shark are incorrect? They both _____.

- A live in water
- B are mammals
- C breathe through gills
- D have scales on their body

- (1) A and B only
- (2) A, C and D only
- (3) B, C and D only
- (4) All of the above

10 Study the classification diagram below.



Which one of the following animals is classified incorrectly?

- (1) Stingray
- (2) Giraffe
- (3) Sparrow
- (4) Penguin

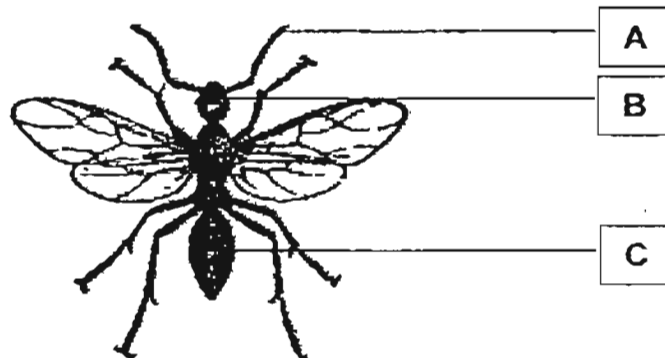
11 Study the classification table below.

Group A	Group B	Group C
Whale	Fruit Bat	Rabbit
Goldfish	Chicken	Kangaroo
Clownfish	Flamingo	Grasshopper

The animals are grouped according to _____.

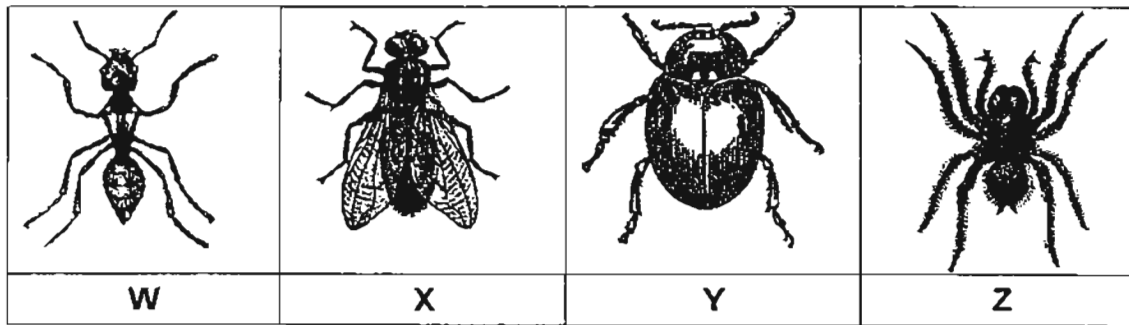
- (1) what they eat
- (2) how they move
- (3) where they live
- (4) their outer body coverings

12 Which one of the following shows the correct labels of the different parts of the animal?



	A	B	C
(1)	Head	Body	Thorax
(2)	Antennae	Thorax	Body
(3)	Antennae	Head	Thorax
(4)	Antennae	Head	Abdomen

13 Study the four animals below.



Which one of the following animals above does not belong to the same animal group?

- (1) W
- (2) X
- (3) Y
- (4) Z

14 Alice, Benny, Chris and Damien made the following statements about lionfish.

Alice	It reproduces by laying eggs in water.
Benny	It has scales to protect its body.
Chris	It uses its gills to swim faster.
Damien	It breathes through its fins.

Who made the correct statement about lionfish?

- (1) Alice and Benny
- (2) Chris and Damien
- (3) Alice, Benny and Damien
- (4) All of them

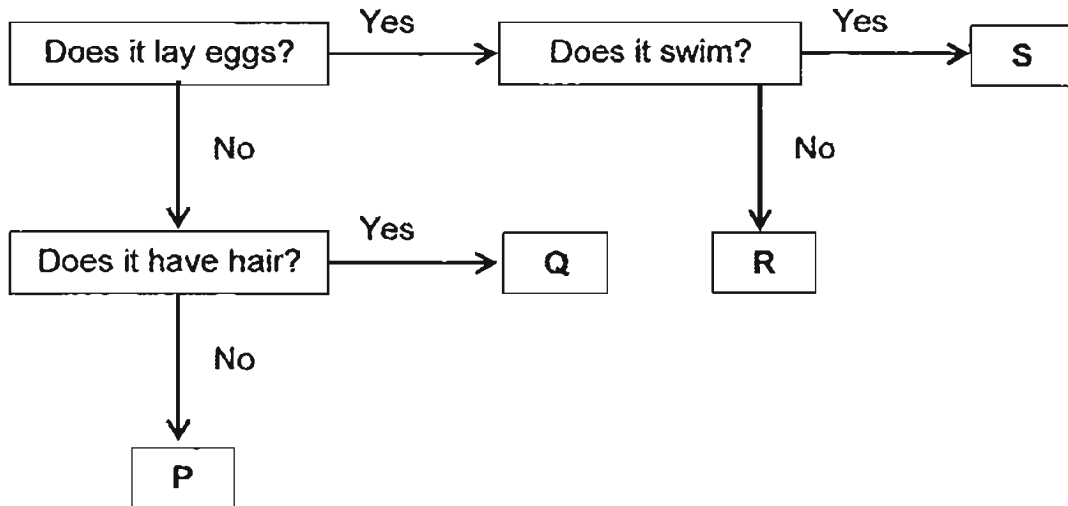
15 Henry went on a field trip and noticed an animal on a branch of a tree. He made the following observations about animal X.

X has wings. X has antennae. X has 3 body parts. X has 3 pairs of legs.
--

X is most likely to be a _____.

- (1) bird
- (2) spider
- (3) butterfly
- (4) caterpillar

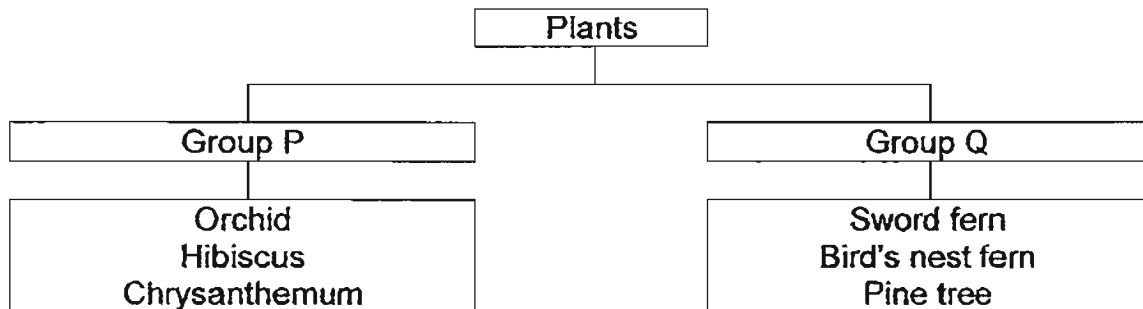
16 Study the flowchart below carefully.



Which of the following best represent P, Q, R and S respectively?

	P	Q	R	S
(1)	Cat	Elephant	Goose	Whale
(2)	Guppy	Monkey	Elephant	Seahorse
(3)	Bat	Lion	Chicken	Guppy
(4)	Guppy	Tiger	Eagle	Goldfish

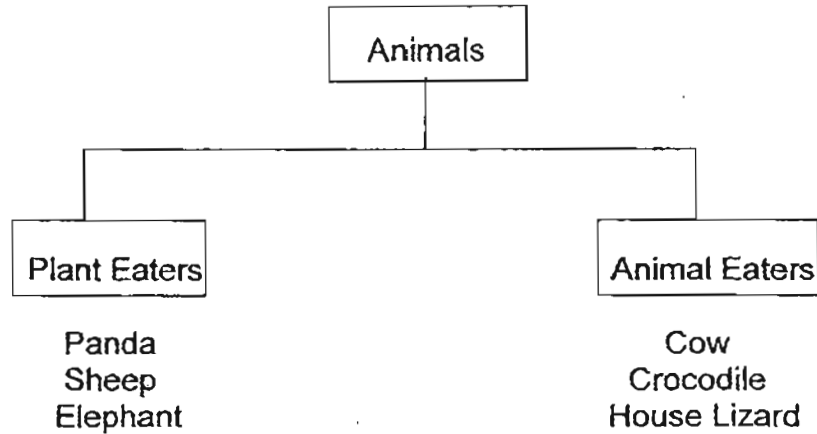
17 Study the classification chart carefully.



How are the plants grouped?

	Group P	Group Q
(1)	Flowering plants	Non-flowering plants
(2)	Land plants	Water plants
(3)	Poisonous plants	Non-poisonous plants
(4)	Reproduce by spores	Reproduce by seeds

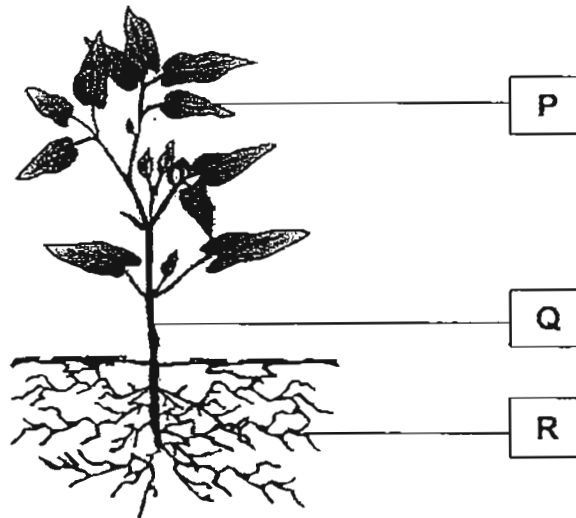
18 Study the classification chart below carefully.



Which one of the following animals is classified incorrectly?

- (1) Cow
- (2) Panda
- (3) Sheep
- (4) Elephant

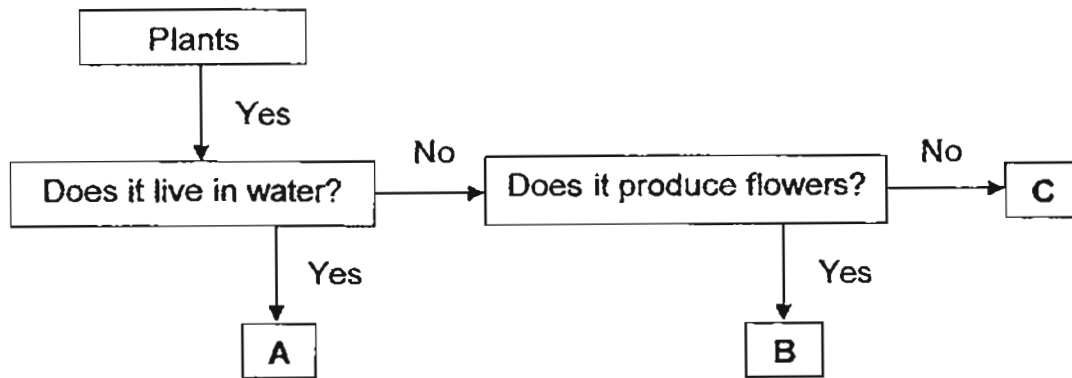
19 Look at the diagram as shown below carefully.



Which of the following correctly represent the parts P, Q and R?

	P	Q	R
(1)	Leaf	Branch	Fruit
(2)	Leaf	Stem	Roots
(3)	Flower	Stem	Roots
(4)	Flower	Branch	Fruit

20 Study the flow chart below.



Which of the following best represent A, B and C?

	A	B	C
(1)	Hibiscus	Rose	Bird's nest fern
(2)	Jasmine	Lantana	Moss
(3)	Lotus	Orchid	Tree fern
(4)	Water lily	Chrysanthemum	Mushroom

21 Which one of the following pairs of statements is false?

- A All fungi are harmful to people.
- B Mould can make its own food.
- C Bacteria can be found in the air.
- D Some bacteria can help in digestion.

- (1) A and D
- (2) A and B
- (3) C and D
- (4) B and D

22 Which of the following belong to the fungi group?

- A Moss
- B Yeast
- C Puffball
- D Slime Mould

- (1) A, B and D only
- (2) A, B and C only
- (3) B, C and D only
- (4) All of the above

23 Which of the following is not true of the toadstool and bracket fungus?
They _____.

- (1) are fungi
- (2) grow from seeds
- (3) cannot make their own food
- (4) can be found on rotten logs and dead wood

24 What are the ways to prevent bacteria from making us sick?

- A Avoid eating yoghurt.
- B Eat food that is cooked properly.
- C Wash our hands after handling pets.
- D Wash our hands thoroughly after using the toilet.

- (1) A and B only
- (2) A, C and D only
- (3) B, C and D only
- (4) All of the above

25 Mr. Tan wants to grow a living thing as shown below.



Under which condition (P, Q, R or S) would the living thing grow best?

Place	P	Q	R	S
Amount of moisture	Low	Low	High	High
Location	Dark place	Bright place	Dark place	Bright place

- (1) P
- (2) Q
- (3) R
- (4) S

- 26 The table below shows the similarities ^{and differences} between a puffball and a mosquito fern. Which of the following is correct?

	Similarities	Differences
(1)	Both reproduce by spores.	The puffball cannot make its own food but the mosquito fern can make its own food.
(2)	Both cannot make their own food.	The puffball is a fungi but the mosquito fern is not.
(3)	Both cannot make their own food.	The puffball reproduces from seeds but the mosquito fern reproduces by spores.
(4)	Both are living things.	The puffball has no seeds but the mosquito fern has seeds.

- 27 Which of the following about bacteria are true?
Bacteria _____

- A can be useful
- B are living things
- C are micro-organisms
- D can be used to make yoghurt

- (1) A and C only
- (2) A, B and C only
- (3) A, B and D only
- (4) All of the above

- 28 A pupil wrote down some descriptions about some materials. Which material is matched wrongly to its description?

	Description	Material
(1)	It is soft and it comes from plants.	wool
(2)	It is usually clear and breaks easily.	glass
(3)	It comes from trees.	wood
(4)	It can be moulded into different shapes.	clay

29 Look at the classification table below.

Group A	Group B	Group C	Group D
Fire hose	Nail	Handkerchief	Windscreen
Car tyre	Penknife blade	Sock	Mirror
Balloon	Safety pin	Tie	Window

In which group does a coin belong to?

- (1) Group A
- (2) Group B
- (3) Group C
- (4) Group D

30 Which one of the following is made from a material which was once alive?

- (1) Iron Ruler
- (2) Silk Shirt
- (3) Plastic Bag
- (4) Stainless Steel Fork



Pei Hwa Presbyterian Primary School
First Semestral Assessment – 2011

Science

Primary 3

(Time: 1 hour 30 minutes)

Booklet A	/ 60
Booklet B	/ 40
Total	/ 100

Name: _____ ()

Class: _____ ()

Date: _____

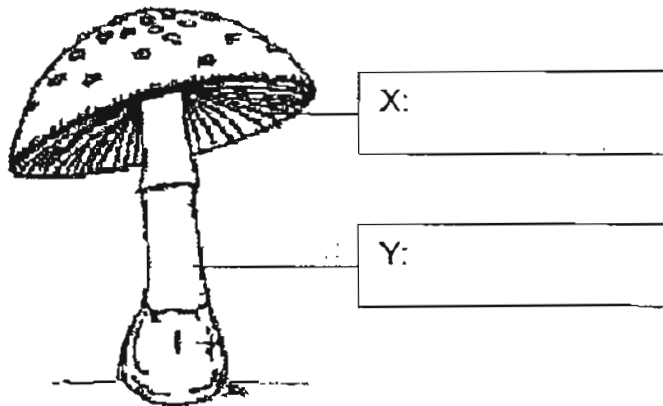
Parent's Signature: _____

Section B (40marks)

For each question from Q31 to Q44, write your answers in the spaces provided.

31 (a) Label the parts of a mushroom.

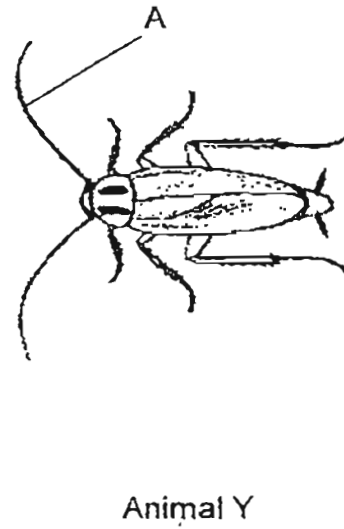
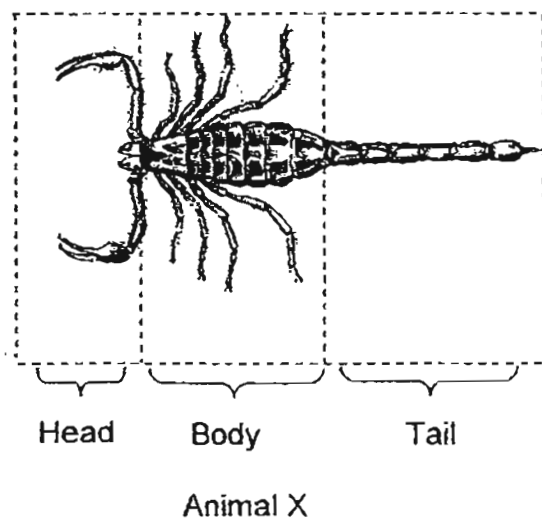
[1]



(b) What can be found in X and what is its function?

[2]

32 Study the diagrams of Animal X and Animal Y carefully.

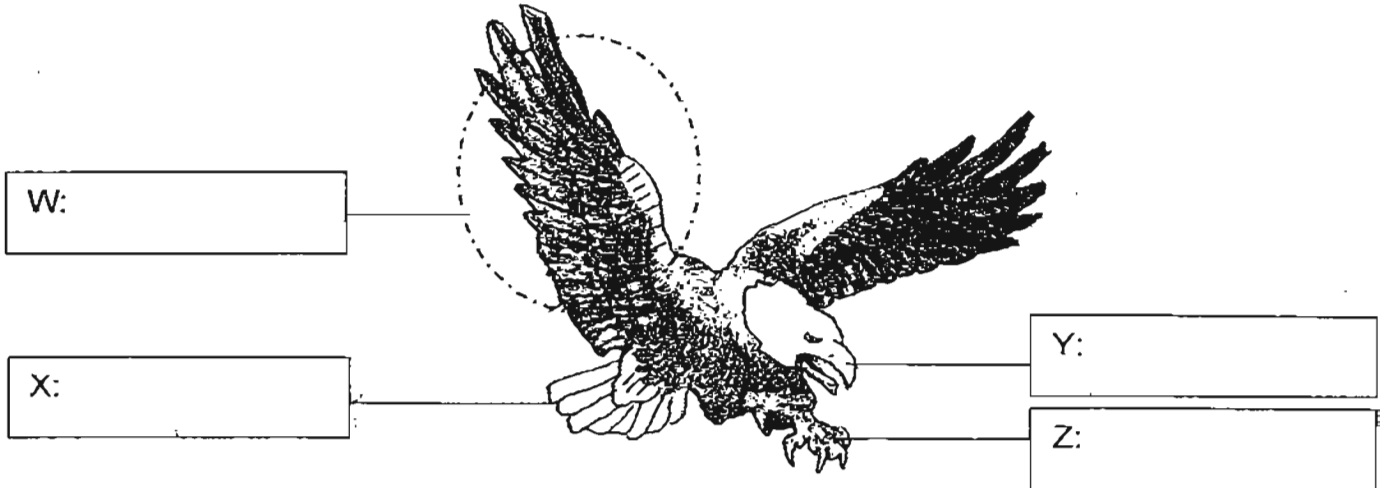


(a) From what you observe in the diagram, is animal X an insect? Explain your answer. [2]

(b) What do you think animal Y uses part A for? [1]

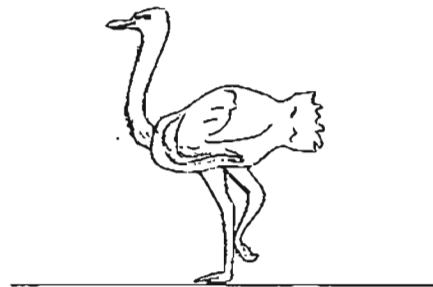
33 Label the body parts of the bird shown below.

[2]



(b) How does Part Y help this bird?

[1]


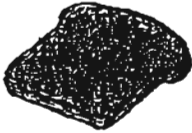



Ostrich

(c) Can an ostrich fly? Explain your answer.

[1]

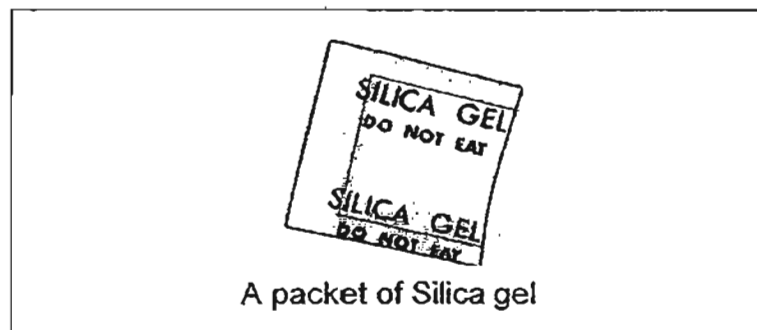
34 Jenny had the following set-ups in her experiment to study the conditions needed for mould to grow. She placed all the ~~four~~ ^{three} set-ups in a metal cupboard. She recorded her observations after two weeks.

		
A	B	C
Plain bread	Toasted bread	Plain bread sprinkled with water

(a) Arrange the set-up (A,B,C) from the one that took the shortest time to turn mouldy to the one that took the longest.

[1]

(b) Silica gel is a chemical that can absorb moisture from the surrounding air.

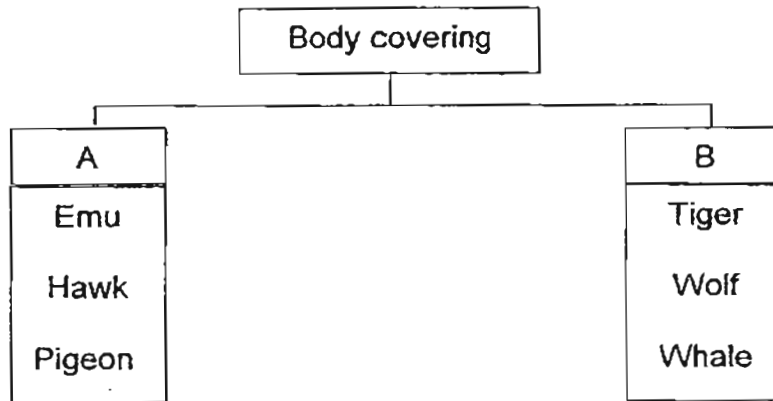


Jenny was eating a packet of her favourite peanut snack when she found a small packet of silica gel in the peanut snack. There was no mould found in the peanut snack.

Explain why no mould was found growing in Jenny's packet of peanut.

[1]

35 Study the classification chart below.



(a) Give suitable headings to A and B.

[1]

A: _____

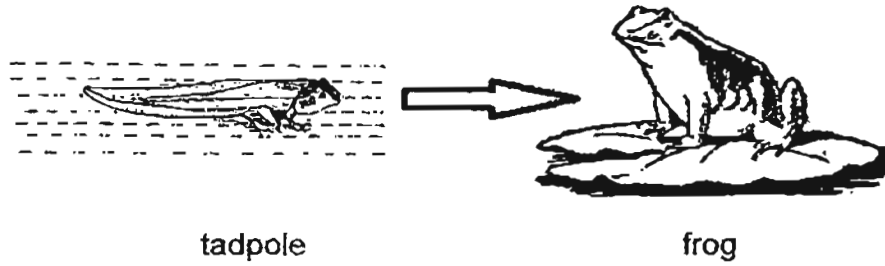
B: _____



Bat

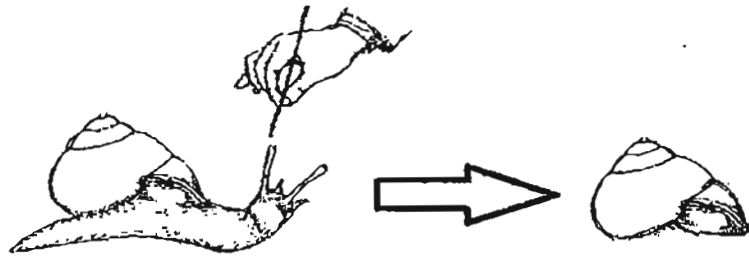
(b) In which group (A or B) of the above classification chart should a bat belong to? [1]

36 The following pictures show the characteristics of living things. Write down one characteristic of living things based on the pictures. [2]



The tadpole became a frog after some time.

(a) Characteristic of living thing: _____



(b) Characteristic of living thing: _____

37 Asimo is a robot developed by Japan. It can move its arms and legs, walk and run like a human. It can talk and respond to commands given by people.

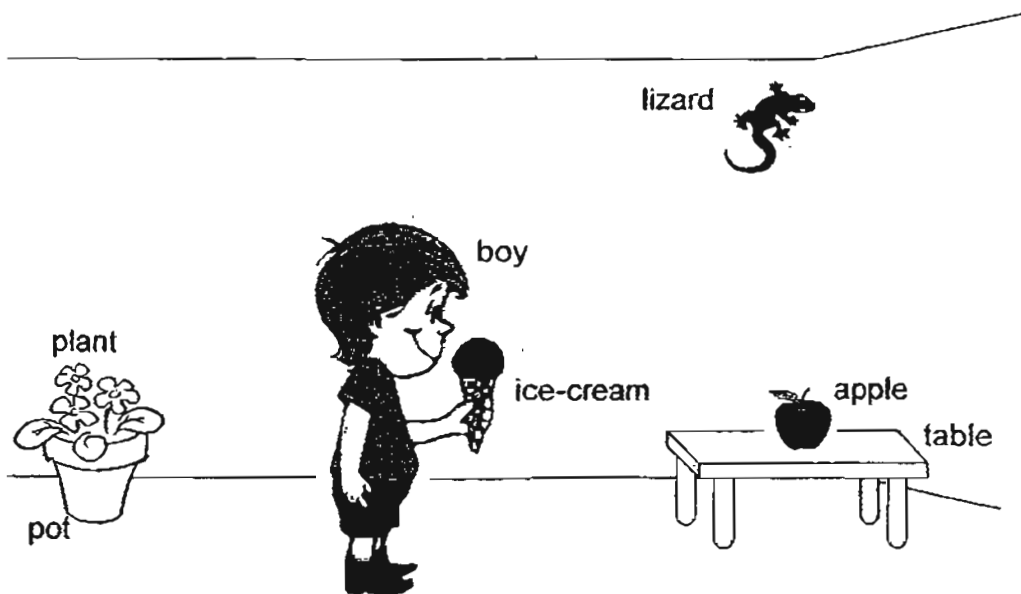


Asimo Robot

(a) Is the Asimo robot a living thing? Explain why.

[1]

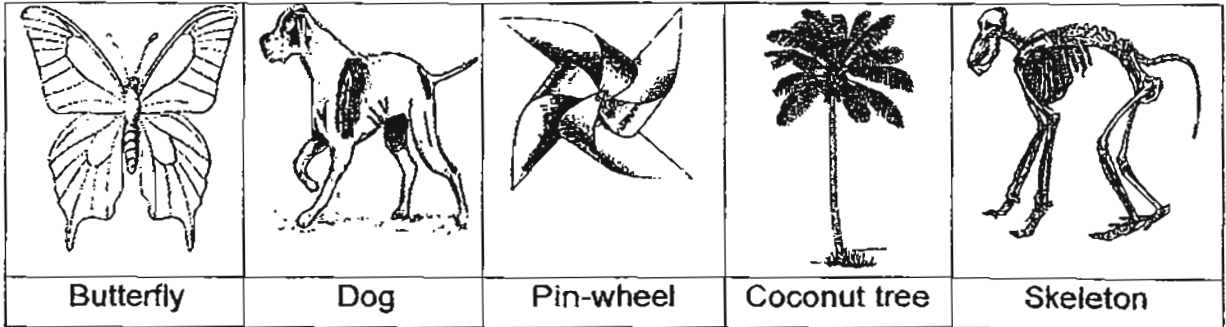
(b) Look at the picture below.



How many non-living things are listed in the picture (Do not include the walls, floor and ceiling)?

[1]

38 Look at the items below.

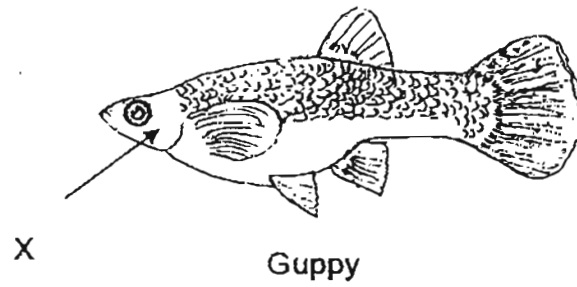


- (a) Classify these items into two groups using the classification table below. The first one has been done for you. [2]
- (b) Give each group a suitable heading. Fill in the blanks provided in the table. [1]

Heading A:	Heading B:
<p>_____</p> <p>Butterfly</p> <p>_____</p> <p>_____</p> <p>_____</p> <p>_____</p>	<p>_____</p> <p>_____</p> <p>_____</p> <p>_____</p> <p>_____</p>

- (c) List down the three basic needs of those items grouped with butterfly. [1]

39 The diagram below shows a guppy.



(a) Which part of the guppy helps it to change direction and keep upright in water?

[1]

(b) What can be found under X? State its function.

[1]

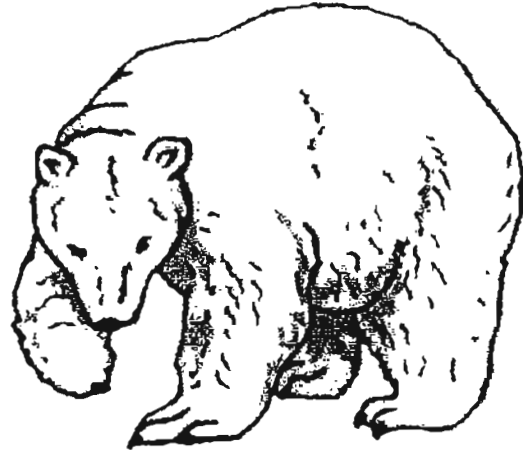
(c) Give one function of its scales?

[1]

Study the diagrams below carefully.



Teddy Bear



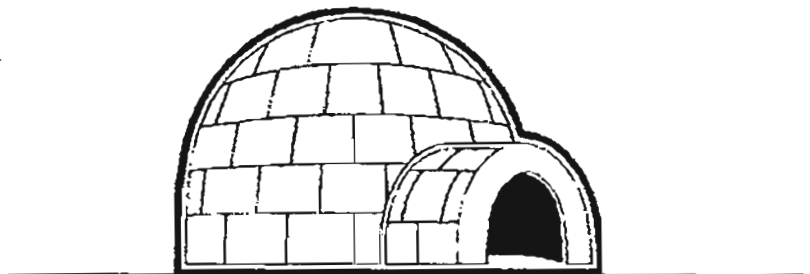
Polar Bear

Write down one observable similarity and one difference between the teddy bear and the polar bear. (Do not compare their sizes, colours and shapes). [2]

Similarity: _____

Difference: _____

41 The igloo is a kind of house built by Eskimos who live in the Arctic.



(a) What is an igloo made from? [1]

(b) Is an igloo a suitable house to build in Singapore? Explain your answer. [1]

(c) Name an item that is made of ceramics and is used in the building of houses. [1]

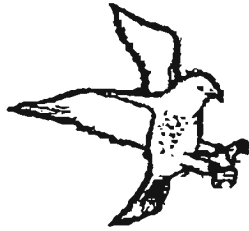
42 Study the diagrams below carefully.



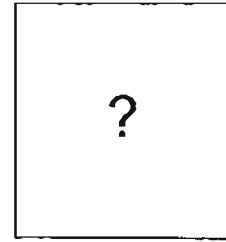
A



B



C



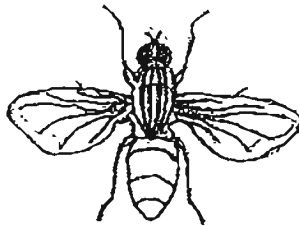
D

(a) Which of the following animal(s) (P, Q, R and S) could possibly be placed in the same animal group with animals A, B and C? Put a tick (✓) in the correct box(es) below.

[2]



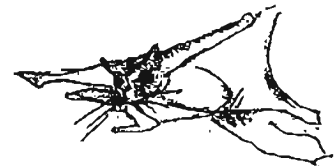
P



Q



R



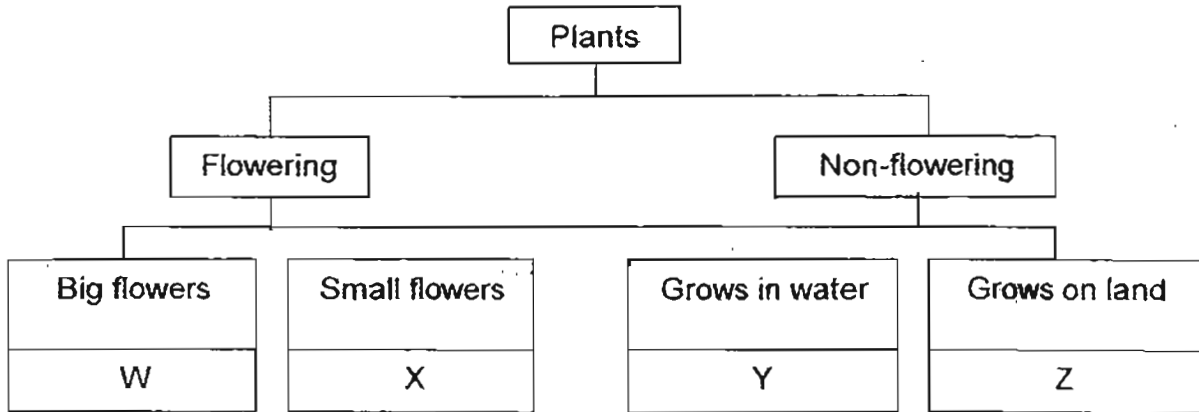
S

(b) What are the two common observable characteristics which distinguish Animals (A, B, C and D) from other animals? [2]

(i) _____

(ii) _____

43 Study the classification of plants below.



(a) Based on the classification chart above, where would you put the following plants? Write the correct answer (W, X, Y and Z) in each blank. [2]

- i) Water spangle : _____
- ii) Moss : _____
- iii) Rice : _____
- iv) Rose : _____

David suggested that mushrooms are non-flowering plants and grow on land. Therefore mushrooms should be placed together with Z in the classification chart above.

(b) Is David correct to place mushrooms together with Z? Explain your answer. [1]

- 44 Melissa left a plate of cooked pasta in a warm place in the kitchen. The next day, Melissa noticed that the pasta started to give out a bad sour smell. Melissa's mum explained to her that bacteria had caused the pasta to turn bad. The kitchen windows were shut and there were no insects.

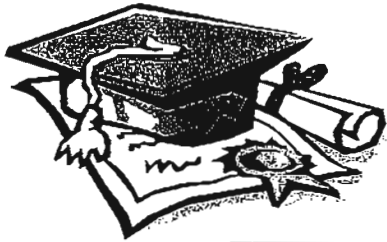


Pasta

- (a) Where do you think the bacteria came from? [1]

- (b) What should Melissa do to prevent the pasta from turning bad quickly? [1]

- (c) Not all bacteria make us sick. Name one useful function of bacteria in the human body. [1]



ANSWER SHEET

EXAM PAPER 2011

**SCHOOL : PEI HWA
SUBJECT : PRIMARY 3 SCIENCE**

TERM : SA1



Q1	Q2	Q3	Q4	Q5	Q6	Q7	Q8	Q9	Q10	Q11	Q12	Q13	Q14	Q15	Q16	Q17
2	1	3	3	3	1	4	1	3	1	2	4	4	1	3	4	1

Q18	Q19	Q20	Q21	Q22	Q23	Q24	Q25	Q26	Q27	Q28	Q29	Q30
1	2	3	2	3	2	3	3	1	4	1	2	2

31)a)X: gills Y: stalk

b)The spores are needed for the mushroom to reproduce.

32)a)Animal X is not an insect. Animal X has eight legs and it does not have feelers antenna.

b)It was part A for attracting other insects and it will help it find food.

33)a)W: wings X: tail Y: beak Z: claws

b)I help it to attack it's prey.

c)Ostrich can not fly. It is too heavy to fly and its wings are to small.

34)a)C,A,B

b)The silica gel remove moist are in the air.

35)a)A: feathers B: hair

b)The bat should belong to group B.

36)a)it grows every day

b)it respond to changes

37)a)The Asimo Robot is not a living thing. It does not need air, food or water to survive.

b)There are four.

38)a)b)Living things

Butterfly

Coconut tree

Dog

non-living things

skeleton

pin-wheel

c)They need air, food and water to survive.

39)a)It is the fish.

b)Gills can be found under X. The gills helps the fish to breathe.

c)The scales protect the fish's body.

40)Similarity: both of them has paws.

Difference: The polar bear needs air, food and water where the Teddy bear does not.

41)a)The igloo is made of ice.

b)No. Singapore is to hot to build on igloo.

c)Bricks, tiles, cloy are made out of ceramic.

42)a)P, R

b)i)They have beaks.

ii)They have leathers.

43)a)i)Y ii)Z iii)X iv)W

b)NO, mushrooms are fungi and not plants.

44)a)The bacteria came from their home.

b)She should put it in the triage.

c)Bacteria can help us in digestion.