



Anglo-Chinese School (Primary)

MID-YEAR EXAMINATION 2011
SCIENCE
PRIMARY THREE
BOOKLET A

Name: _____ ()

Class: Primary 3 _____

Date: 11 May 2011

Duration of paper: 1h 15 min

Parent's/Guardian's signature

INSTRUCTION TO CANDIDATES

1. This question paper consists of 10 printed pages.
2. Do not turn this page until you are told to do so.
3. Follow all instructions carefully.
4. Answer all questions.
5. Shade your answer on the Optical Answer Sheet (OAS) provided.

PART 1

For each of the following questions from 1 to 15, four options are given. One of them is the correct answer. Make your choice (1, 2, 3 or 4). Shade the correct oval (1, 2, 3 or 4) on the Optical Answer Sheet. (15 x 2 marks)

- 1 Which one of the following is a characteristic of all living things?
- (1) They produce their own food.
 - (2) They move from place to place.
 - (3) They reproduce by giving birth.
 - (4) They respond to changes around them.
- 2 Sean placed a cockroach in a sealed plastic box. What does he need to do to make sure that the cockroach survives?
- A Put a plate of water in the plastic box.
 - B Poke holes in the lid of the plastic box.
 - C Dust the plastic box everyday to ensure that there is no dust.
 - D Make sure that there is food for the cockroach in the plastic box.
- (1) A and B only
 - (2) A, B and C only
 - (3) A, B and D only
 - (4) A, B, C and D only
- 3 Which one of the following statements is true?
- (1) A flowering plant will die when it produces flowers.
 - (2) Most flowering plants can reproduce by seeds and spores.
 - (3) Only flowering plants can make food in the presence of sunlight.
 - (4) Different flowering plants produce flowers of different colours and sizes.

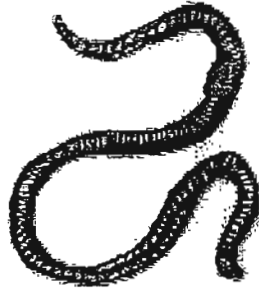
4 Which one of the following animals has the same outer covering as a mammal?

(1)



Spiny anteater

(2)



Earthworm

(3)



Turtle

(4)



Fish

5 Study the table below carefully.

Group X	Group Y
Shark	Dog
Guppy	Gorilla
Goldfish	Hamster

Which of the following animals may be placed in **Group Y**?

- A Bat
- B Whale
- C Dolphin
- D Cockroach

- (1) A, B and C only
- (2) A, B and D only
- (3) A, C and D only
- (4) B, C and D only

6 Bacteria and fungi are similar as they _____.

- A are neither plant nor animal
- B can be useful or harmful to humans
- C can cause decay of dead living things.

- (1) B and C only
- (2) C ~~and B~~ only
- (3) A and C only
- (4) A, B and C

7 Which of the following materials come from plants?

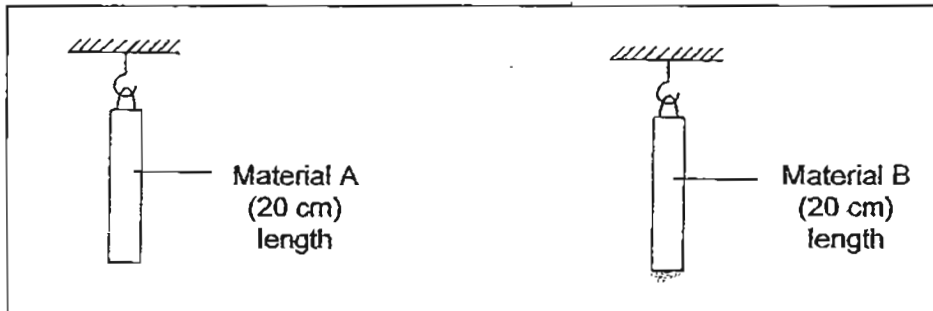
- (1) Metal and wood
- (2) Metal and rubber
- (3) Rubber and wood
- (4) Ceramic and rubber

8 Which of the following explain why a car is made of metal so that it can provide protection for the people in it?

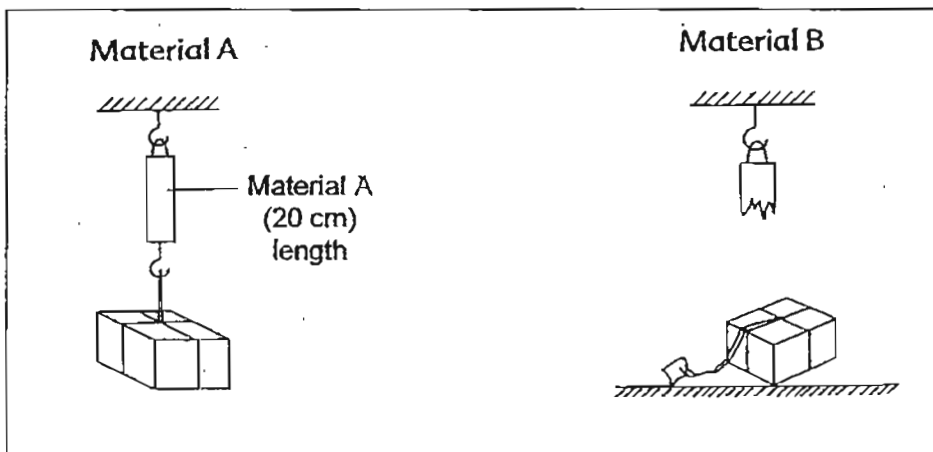
- A Hard
- B Strong
- C Flexible
- D Opaque

- (1) A and B only
- (2) A and D only
- (3) B and C only
- (4) B and D only

9 A strip of Material A and Material B were each hung on a hook as shown below.



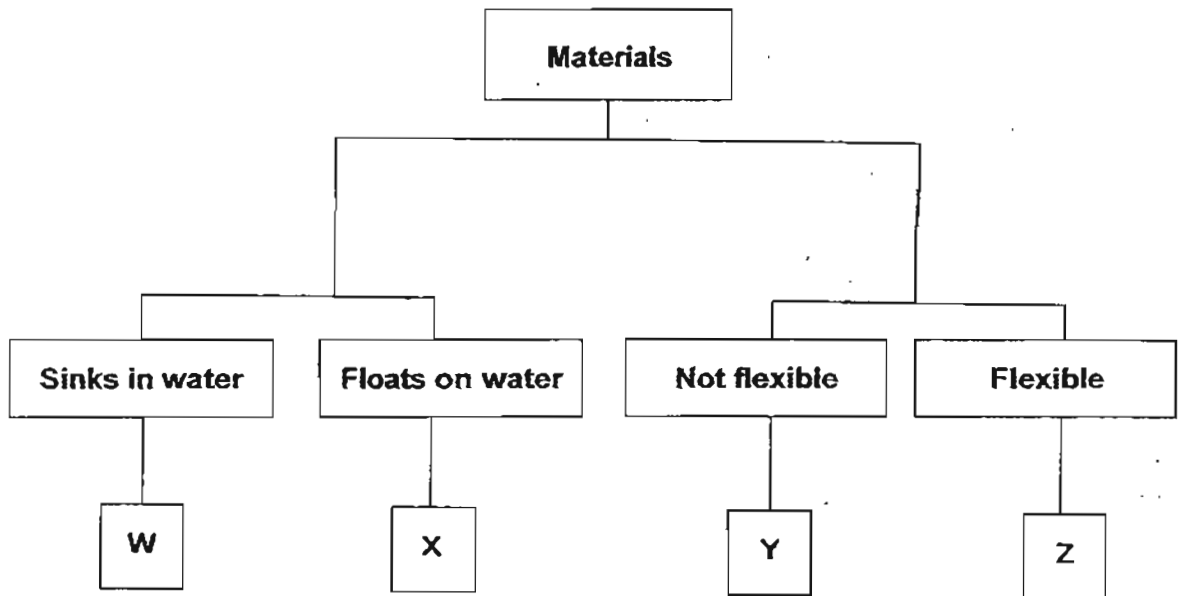
Two boxes of the same mass were then hung onto the strips. The results are shown below.



What can be concluded from the above experiment?

- (1) Material B is softer than Material A
- (2) Material A is lighter than Material B
- (3) Material A is stronger than Material B
- (4) Material B is less flexible than Material A

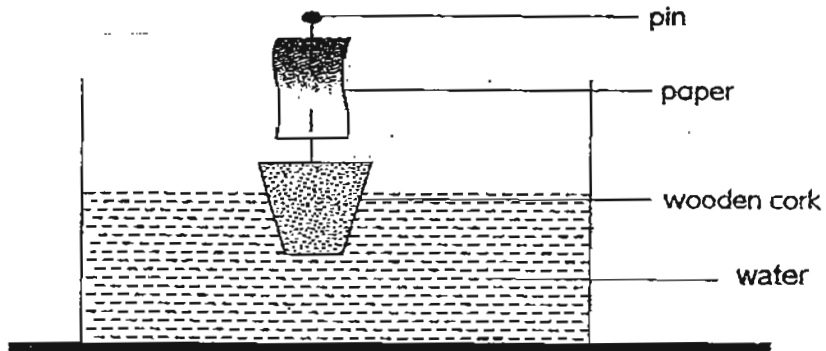
10 Study the classification chart below.



Which one of the following best represents W, X, Y and Z?

	W	X	Y	Z
(1)	Straw	Metal spoon	Wooden chopstick	Eraser
(2)	Eraser	Wooden chopstick	Metal spoon	Straw
(3)	Metal spoon	Eraser	Straw	Wooden chopstick
(4)	Eraser	Straw	Wooden chopstick	Metal spoon

- 11 Joel made a simple toy from a pin, a wooden cork and a piece of paper as shown below. He placed the toy in a basin of water. The toy moved when there was wind.

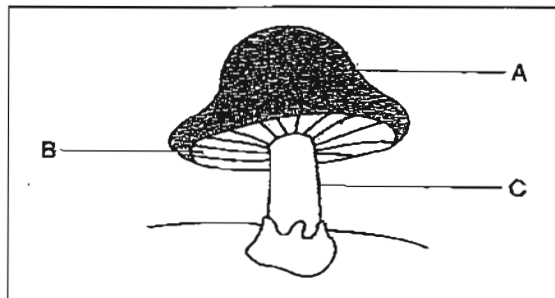


What properties of the paper and wooden cork make them suitable for making the different parts of the toy above?

	Paper	Wooden Cork
(1)	Able to float	Light
(2)	Light	Able to float
(3)	Not waterproof	Hard
(4)	Hard	Not waterproof

Answer questions 12 and 13 based on the diagram below.

Study the diagram below.



12 Identify the parts of the mushroom above.

	Gills	Cap	Stalk
(1)	A	B	C
(2)	C	A	B
(3)	B	A	C
(4)	B	C	A

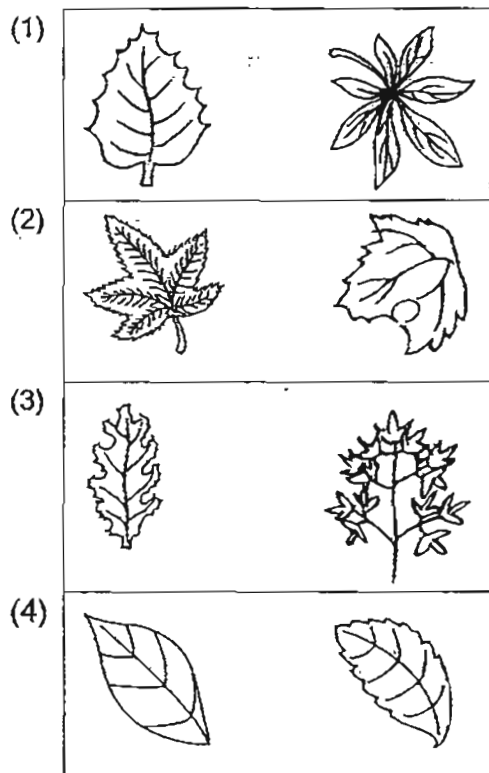
13 How do mushrooms reproduce?

- (1) By seeds
- (2) By spores
- (3) By giving birth
- (4) By laying eggs

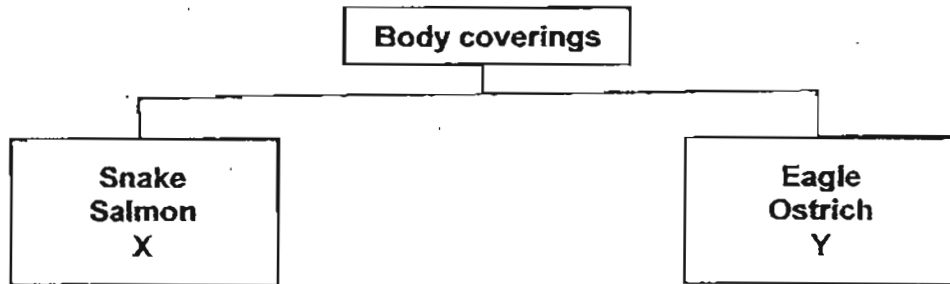
14 Study the pictures below carefully.



Which one of the following pair of leaves below belong to the same group as the leaves shown above?



15 Study the classification chart below.



Which one of the following correctly represents Animals X and Y?

	Animal X	Animal Y
(1)	Turtle	Panda
(2)	Prawn	Lizard
(3)	Angelfish	Peacock
(4)	Tiger	Duck

- End of Booklet A -



Anglo-Chinese School (Primary)

MID-YEAR EXAMINATION 2011
SCIENCE
PRIMARY THREE
BOOKLET B

Name: _____ ()

Class: Primary 3 _____

Date: 11 May 2011

Duration of paper: 1h 15 min

Parent's/Guardian's signature

INSTRUCTION TO CANDIDATES

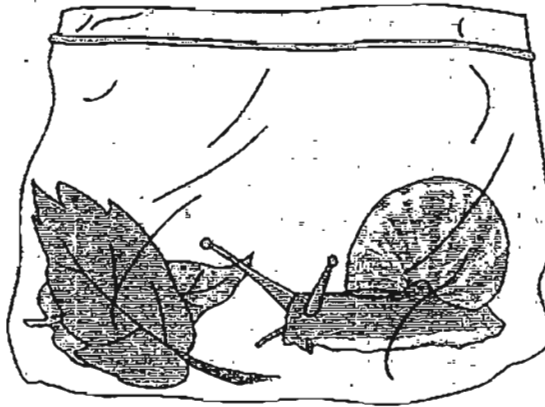
1. This question paper consists of 8 printed pages.
2. Do not turn this page until you are told to do so.
3. Follow all instructions carefully.
4. Answer all questions.

Booklet	Maximum marks	Marks obtained
A	30	
B	20	
Total	50	

PART II

For questions 16 to 22, write your answers in the spaces provided in this booklet. The number of marks available is shown in brackets [] at the end of each question or part question. (20 marks)

- 16 Russell wanted to bring his pet snail to show his classmates. He placed the snail in a Ziploc bag together with some leaves and sealed the bag to ensure that the snail did not escape.



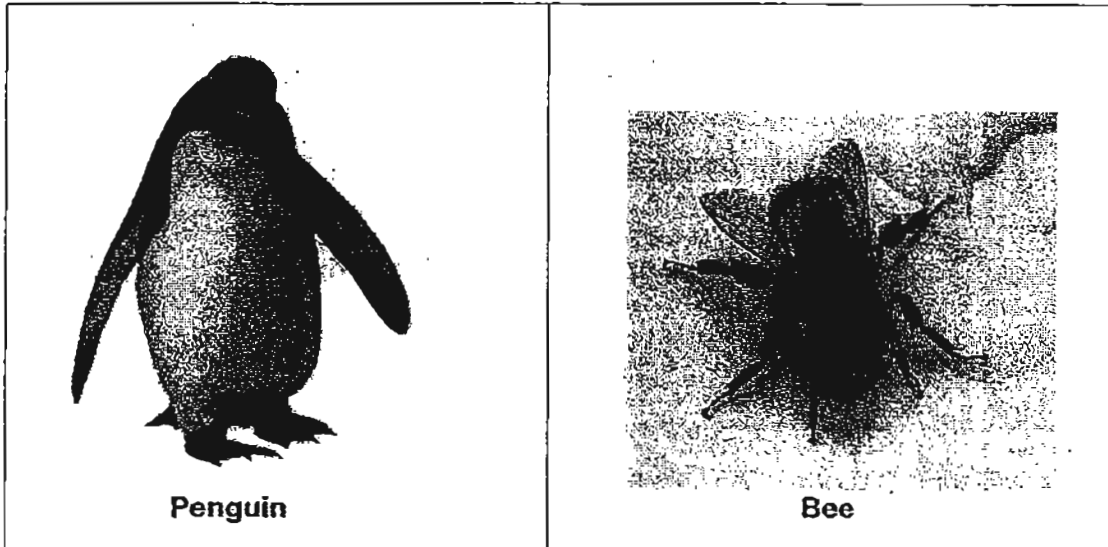
- (a) Predict what will happen to the snail 1 week later. [1]

- (b) Explain your answer to (a). [1]

(Go to the next page)

Score	2
-------	---

17 Study the pictures below carefully.



(a) State one **observable similarity** between the penguin and the bee. [1]
[Do not mention colour and size]

(b) State one **observable difference** between the penguin and the bee. [1]
[Do not mention colour and size]

(Go to the next page)

Score	2
-------	---

- 18 An experiment was conducted to test the amount of fungal growth on the same type of bread. Each piece of bread was placed in a different location (in an open field, in a refrigerator, in a closed cupboard). The same amount of water was sprinkled on each piece of bread daily. The bread was left at each location for 3 days. No rain fell on the 3 days.

The results of the experiment are shown in the table below.

Location of bread	Location 1 (Open field)	Location 2 (Refrigerator)	Location 3 (Closed cupboard)
Amount of fungal growth	++ (some)	+ (little)	++++ (a lot)
Colour of fungi	White, black	White	White, black, yellow

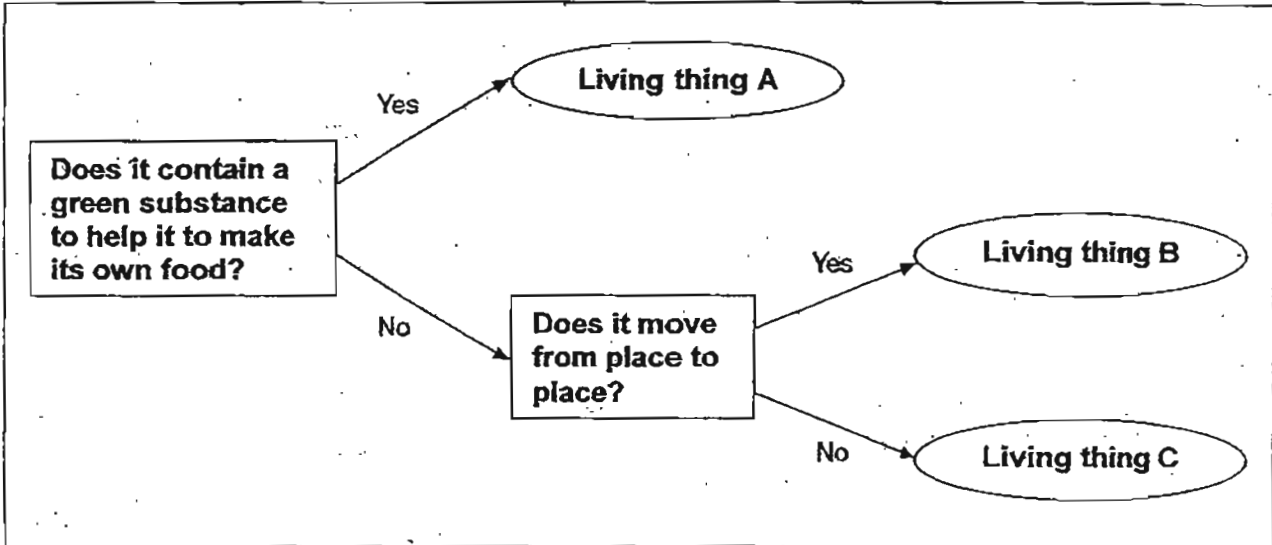
- (a) How many types of fungi grew on the 3 breads? Explain your answer. [2]

- (b) Why do you think there is more fungal growth on the bread at Location 3 than Location 2? State 2 reasons. [2]

(Go to the next pa

Score	/
-------	---

19 Study the flow chart diagram below.



Based on the flow chart diagram above,

(a) What is the difference between Living thing A and Living thing B? [1]

(b) Classify Living things A, B and C in the correct groups below. [3]

Animals	Plants	Fungi

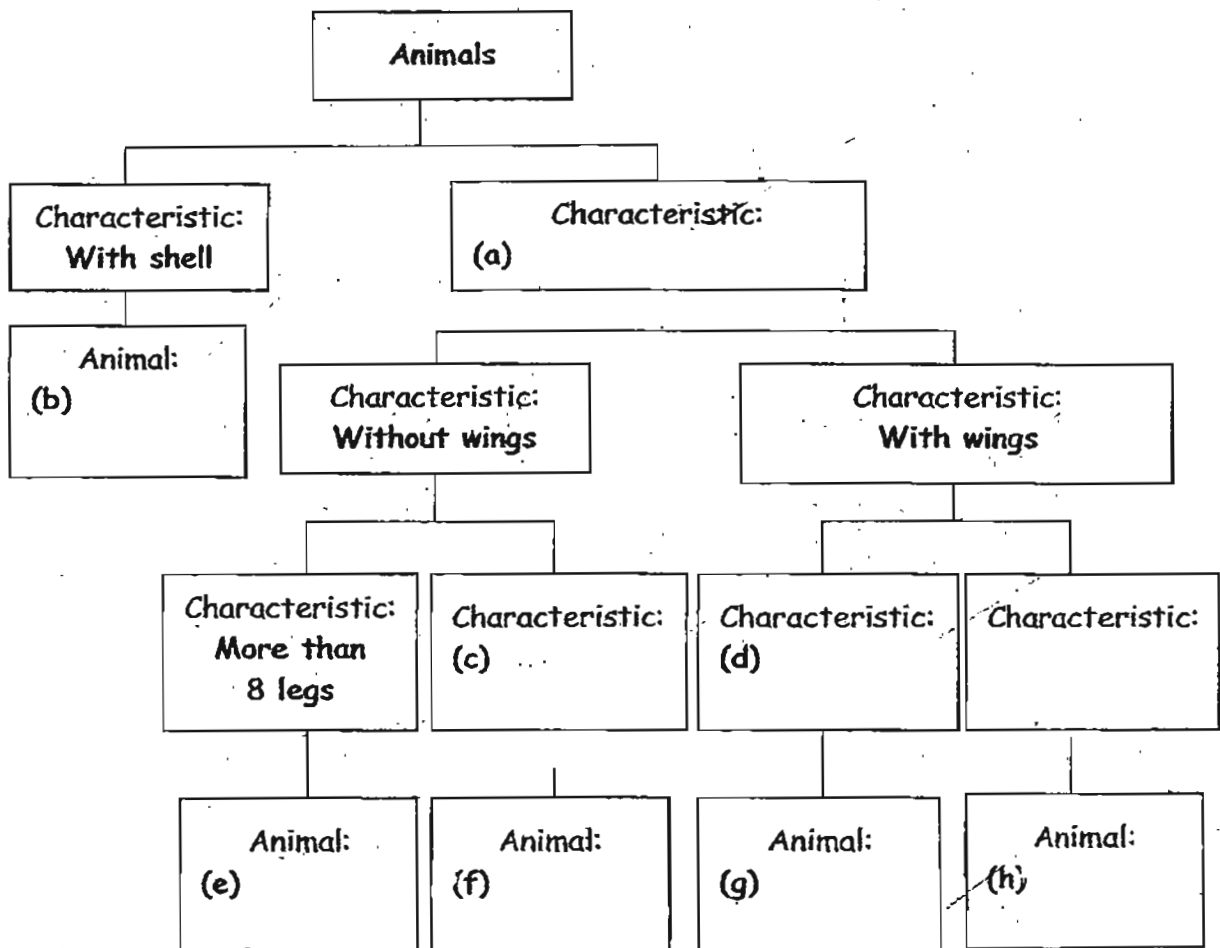
(Go to the next page)

Score	4
-------	---

20 The table below shows the characteristics of animals A, B, C, D and E.

Body parts	A	B	C	D	E
Legs	6	4	More than 8	2	8
Wings	Yes	No	No	Yes	No
Shell	No	Yes	No	No	No

Based on the information given in the above table only, complete the chart below by filling in boxes (a) to (h) with the letters A, B, C, D, E or suitable characteristics, to show how the animals can be classified. [4]



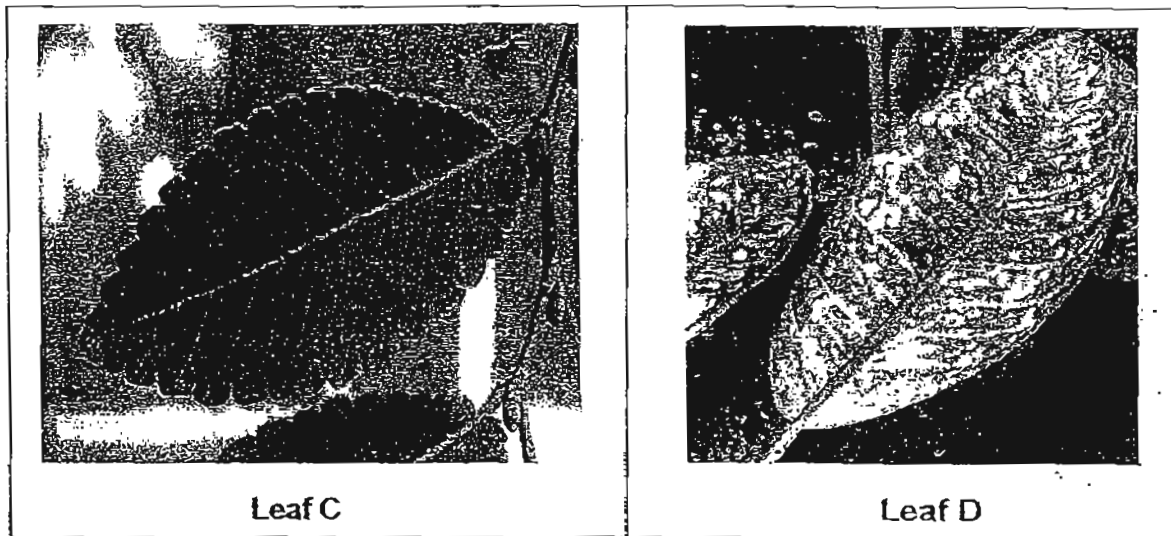
(Go to the next page)

Score	4
-------	---

21 Study the pictures below carefully.



(a) State one **observable difference** between Flower A and Flower B in the above diagram. [1]

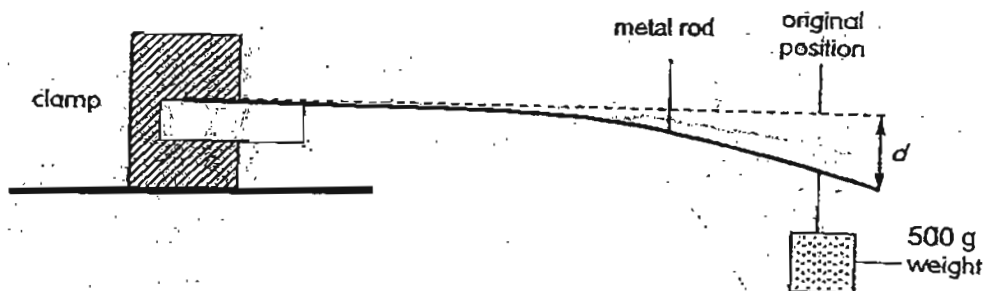


(b) State one **observable similarity** between Leaf C and Leaf D in the above diagram. [1]

(Go to the next page)

Score	2
-------	---

22 Daniel used a metal rod in the experiment shown in the diagram below.



He clamped the metal rod at one end and attached a 500 g weight at the other end. The rod bent each time the weight was hung. He measured the distance, d , as shown in the diagram above and repeated the experiment with rods of different materials. He obtained the following results:

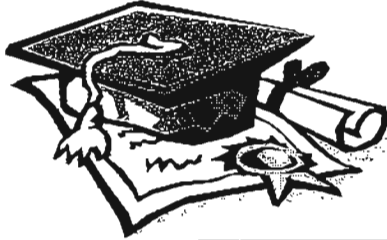
Material	Distance, d (cm)
Metal	4 cm
Plastic	8 cm
Wood	1 cm

What is the aim of the experiment above?

[2]

- End of Paper -

Score	/
-------	---

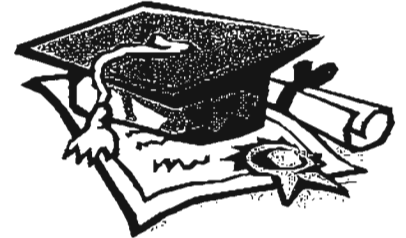


ANSWER SHEET

EXAM PAPER 2011

**SCHOOL : ACS
SUBJECT : PRIMARY 3 SCIENCE**

TERM : SA 1



Q1	Q2	Q3	Q4	Q5	Q6	Q7	Q8	Q9	Q10	Q11	Q12	Q13	Q14	Q15
4	3	4	1	1	4	3	1	3	3	2	3	2	4	3

16 a) 1 week later, the snail would have died.

b) There was insufficient air in the Ziploc bag.

17 a) They both have wings.

b) The penguin has a beak, whereas a bee does not.

18 a) There are white, black and yellow fungi.

b) Location 3 is warmer and darkness than location 2.

19 a) Living thing A contains a green substance to make its own food while living thing B does not.

20 a) without shell

(b) animal : B

(c) 8 legs

(d) 2 legs

e) animal : C

(f) Animal : E

(g) Animal : D

(h) Animal : A

21 a) Flower A grow singly whereas flower B grows in clusters.

b) Leaf C and D have network veins.

22) To find out which material is the most flexi.

-- end of paper ---