

Pei Chun Public School
Continual Assessment – 2011
Science
Primary 3

Name: _____ () Date: 25 August 2011

Class: Pr. 3 ()

Science Teacher: _____

Time: 1 h 30 min

Section A (25 × 2 marks)

For questions 1 to 25, choose the most suitable answer and shade its number (1, 2, 3 or 4) on the Optical Answer Sheet (OAS) provided.

1. Study the two groups of things given below.

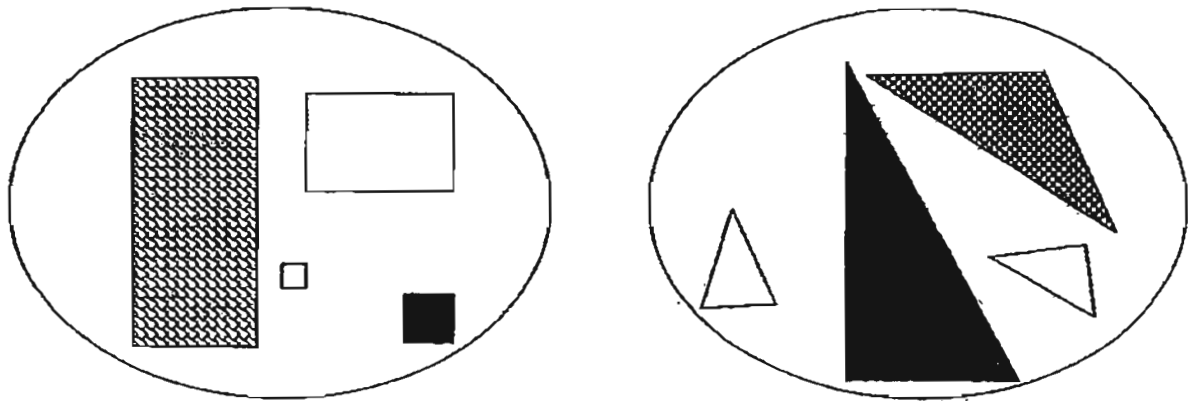
Group A	Group B
crow	grass
tadpole	tree fern
tiger	green algae
mushroom	water lily

How are they classified?

	Group A	Group B
(1)	Animals	Plants
(2)	Can move from place to place	Cannot move from place to place
(3)	Cannot make food	Can make food
(4)	Can respond to changes	Cannot respond to changes

()

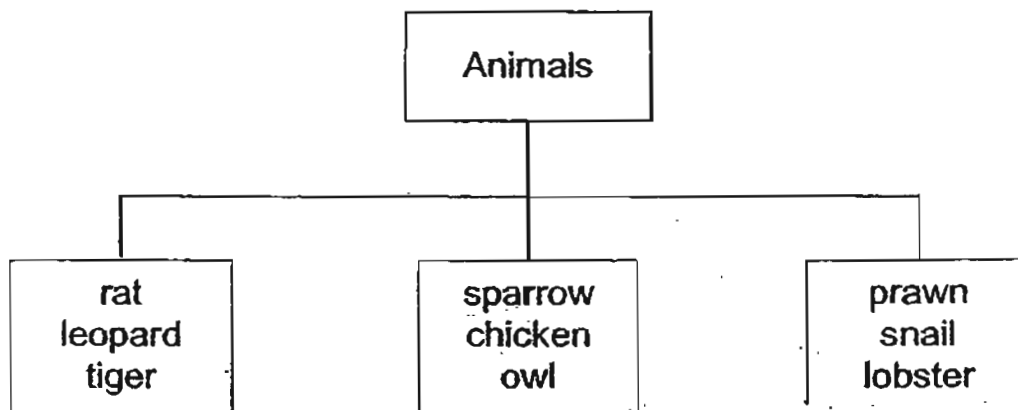
2. Study the diagrams below carefully.



The above objects are grouped according to their _____.

- (1) sizes
- (2) shapes
- (3) colours
- (4) patterns ()

3. The classification chart below shows three groups of animals.



These animals are classified according to _____.

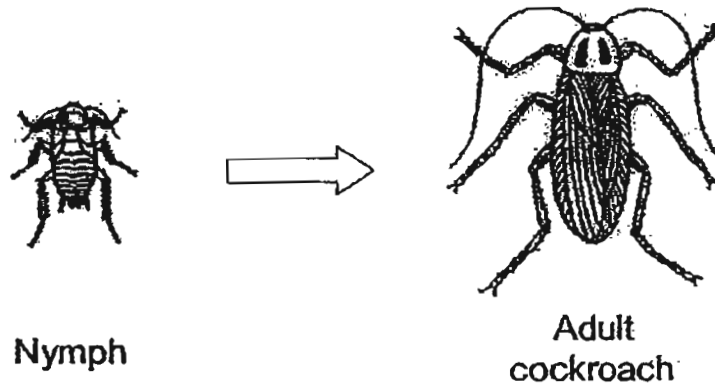
- (1) the food they eat
- (2) the place they live
- (3) the way they move
- (4) their body coverings ()

4. Animals need _____ to stay alive.

- A: air
- B: food
- C: water
- D: sunlight

- (1) A, B and C only
- (2) A, B and D only
- (3) B, C and D only
- (4) A, B, C and D ()

5. The diagram below shows an insect.



Which characteristic of living things is displayed by the insect?

- (1) It can die.
- (2) It can grow.
- (3) It can move by itself.
- (4) It responds to changes. ()

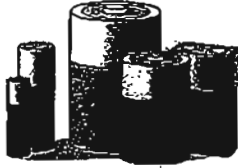
6. A magnet can lose its magnetism if it is _____.

- A: heated over fire
- B: put in a cup of water
- C: dropped many times
- D: hammered many times

- (1) A and B
- (2) A, B and D
- (3) A, C and D
- (4) B, C and D ()

7. Study the diagrams below.
Which of the following objects does not make use of magnets?

(1)



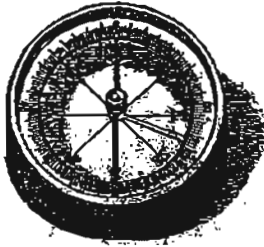
batteries

(2)



refrigerator

(3)



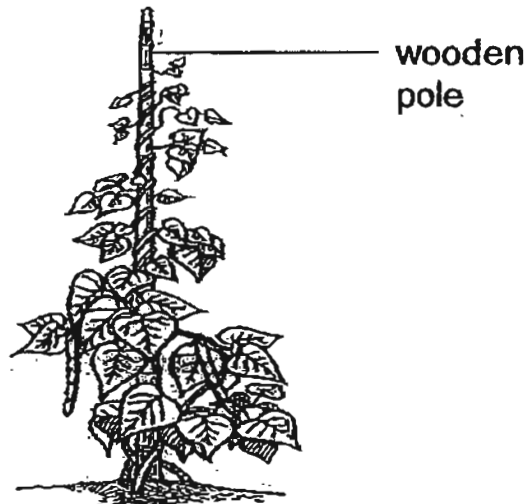
compass

(4)



ATM cards ()

8. The diagram below shows a plant growing in the garden.

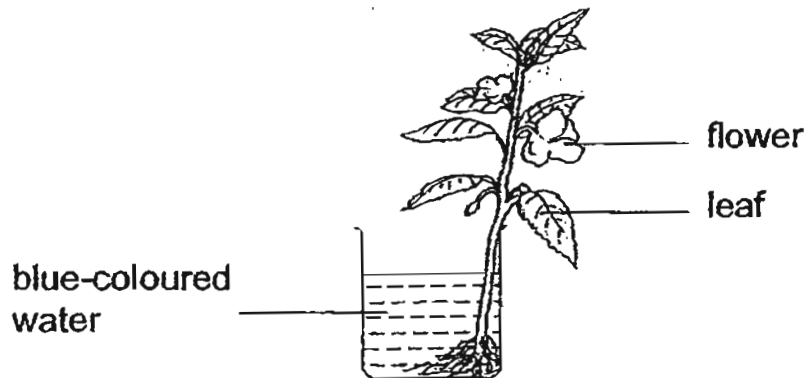


Which part of the plant helps it to climb up the wooden pole to get more sunlight?

- (1) leaf
- (2) root
- (3) fruit
- (4) stem

()

9. A plant with white flowers was put into a beaker of blue-coloured water. One day later, the flowers and leaves turned blue.



Which of the following statements are correct about the plant?

- A: Water is carried through the stem.
- B: Water is transported to the leaves.
- C: Water is transported to the flowers.
- D: Water is taken in by the roots.

- (1) A and C only
- (2) B and D only
- (3) A, B, and C only
- (4) A, B, C and D

()

10. Study the diagrams below.



Bird's nest fern



Bread mould



Mushroom



Iceland moss

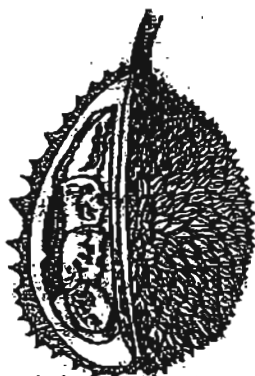
What is a common characteristic of the organisms above?

- (1) They are plants.
- (2) They reproduce by spores.
- (3) They can photosynthesise.
- (4) They feed on dead plants and animals.

()

11. Study the classification table below.

Fruits			
Rough skin		Smooth skin	
One seed	Many seeds	One seed	Many seeds
lychee rambutan P	kiwi rock melon Q	plum cherry R	papaya watermelon S



Which fruit, P, Q, R or S, can be represented by the above fruit?

- (1) P
- (2) Q
- (3) R
- (4) S

()

12. Which of the following statements about animals is definitely false?

- (1) Birds reproduce by laying eggs.
- (2) Mammals produce milk for their young.
- (3) Insects have three pairs of legs on their abdomens.
- (4) Fishes have gills that enable them to live in the water.

()

13. The classification table below shows the characteristics of W, X, Y and Z.

	Ability to move from place to place	Reproduces	Needs water	Has legs
W		✓	✓	
X	✓	✓	✓	✓
Y	✓	✓	✓	
Z	✓			✓

Which of the following is most likely to be a non-living thing?

- (1) W
- (2) X
- (3) Y
- (4) Z

()

14. Ben found a strange-looking animal in the jungle. It is small and brown in colour. It has a pair of wings and three body parts. Which group of animals does it belong to?

- (1) birds
- (2) fishes
- (3) insects
- (4) mammals

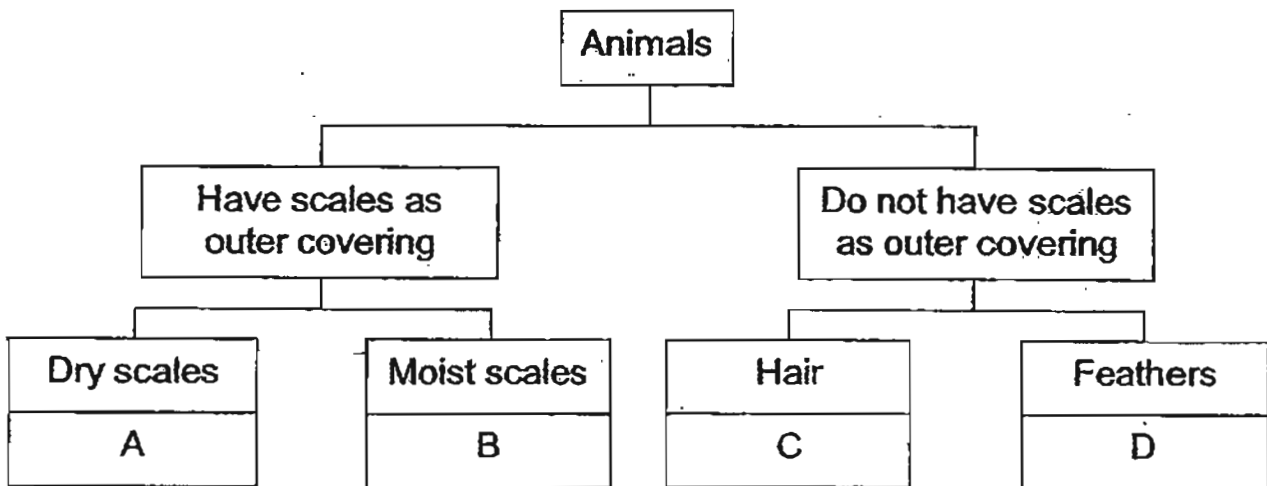
()

15. Which of the following statements about a micro-organism is correct?

- (1) It is a living thing that feeds on both plants and animals.
- (2) It can only be seen under a microscope.
- (3) It is always found in water.
- (4) It is always an animal.

()

16. Study the chart below.

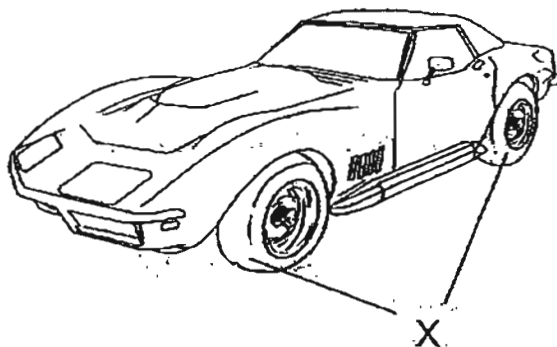


What could animals A, B, C and D be?

	A	B	C	D
(1)	snail	frog	polar bear	bat
(2)	goldfish	lizard	seal	mynah
(3)	lizard	goldfish	seal	mynah
(4)	frog	snail	polar Bear	bat

()

17. The diagram shows a car with a part marked X.

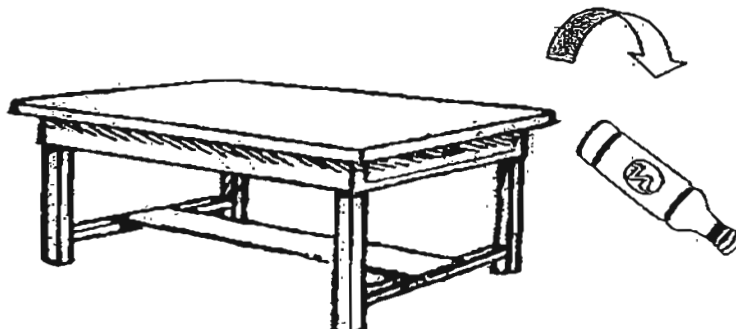


Which of the following materials is most suitable for making part X?

	Material	Stretches	Bends easily	Fragile
(1)	A	Yes	Yes	No
(2)	B	No	No	Yes
(3)	C	No	Yes	Yes
(4)	D	Yes	No	No

()

18. A bottle was knocked over and dropped from a table but did not break.



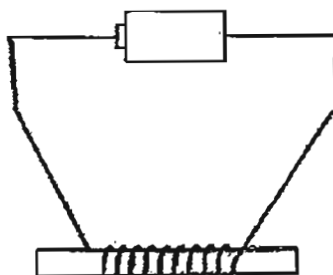
Which of the following material is the container likely to be made of?

- A: clay
- B: metal
- C: glass
- D: plastic

- (1) A and C only
- (2) A and D only
- (3) B and D only
- (4) B and C only

()

19. Bala is making an electromagnet.



Which of the following set-ups will attract the most number of paper clips?

Set up	A	B	C	D
Number of turns of wire	10	30	10	30
Number of batteries	2	2	3	3

- (1) A
- (2) B
- (3) C
- (4) D

()

20. Which of the following objects is made from only one material?

(1)



shirt

(2)



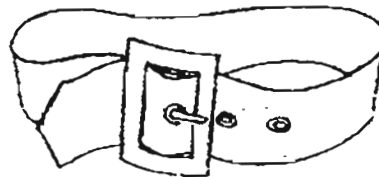
running shoes

(3)



Needle

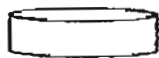
(4)



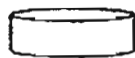
belt

()

21. Stacy had four magnets. She brought them, one by one into a box of pins.



Magnet W



Magnet X



Magnet Y



Magnet Z

She counted the number of pins each magnet had attracted and recorded the results.

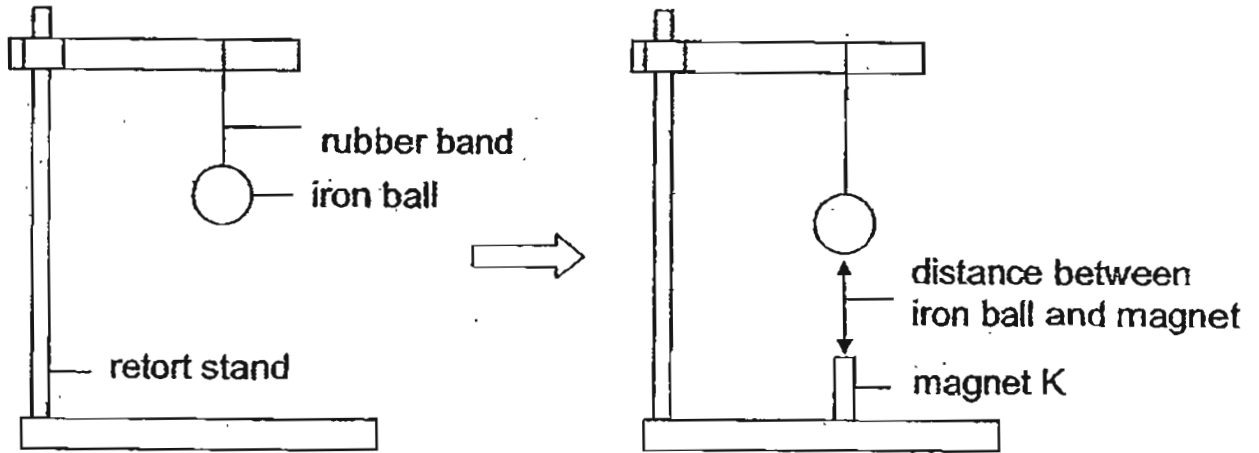
Magnet	W	X	Y	Z
Number of pins attracted	15	20	10	35

Based on the table above, which statement concludes Stacy's experiment?

- (1) The strength of a magnet depends on its size.
- (2) Bigger magnets are stronger than smaller magnets.
- (3) Smaller magnets are stronger than bigger magnets.
- (4) The strength of a magnet does not depend on its size.

()

22. Muthu set up an experiment as shown below to test the strength of four bar magnets, K, L, M and N. When he placed magnet K below the iron ball, the ball moved downwards.



He measured and recorded the distance between the iron ball and the magnet. He repeated the experiment using magnet L, M and N and recorded the results as shown below.

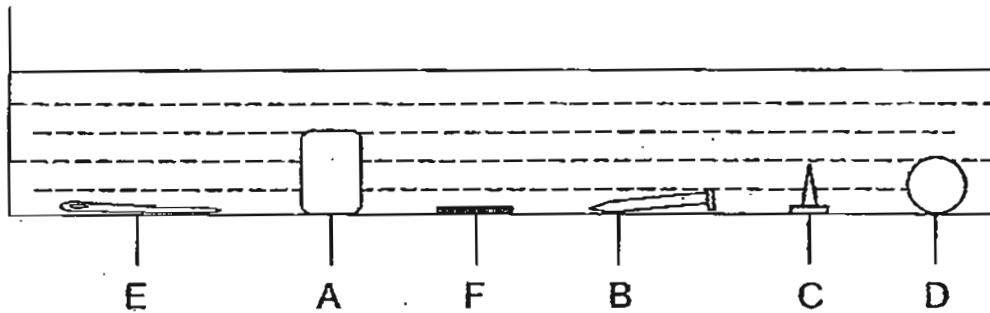
Magnet	Distance between the iron ball and the magnet
K	6 cm
L	3 cm
M	1 cm
N	5 cm

Which of the following shows the strength of the magnet from the weakest to the strongest?

- Strongest
- (1) K, N, L, M
 (2) K, N, M, L
 (3) N, K, L, M
 (4) M, L, N, K

()

23. Liming wanted to take some objects out of the glass tank without using his hands. He used a strong magnet to attract and slide them out of the glass tank.



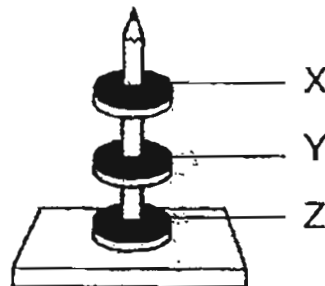
A	B	C	D	E	F
eraser	iron nail	thumbtack	marble	needle	copper coin

Which of the following is most likely to be his observations?

	Objects taken out of the glass tank	Objects that remained in the glass tank
(1)	B, D, E	A, C, F
(2)	B, C, E	A, D, F
(3)	B, E, F	A, C, D
(4)	A, C, F	B, D, E

()

24. The diagram below shows three ring magnets, X, Y and Z.

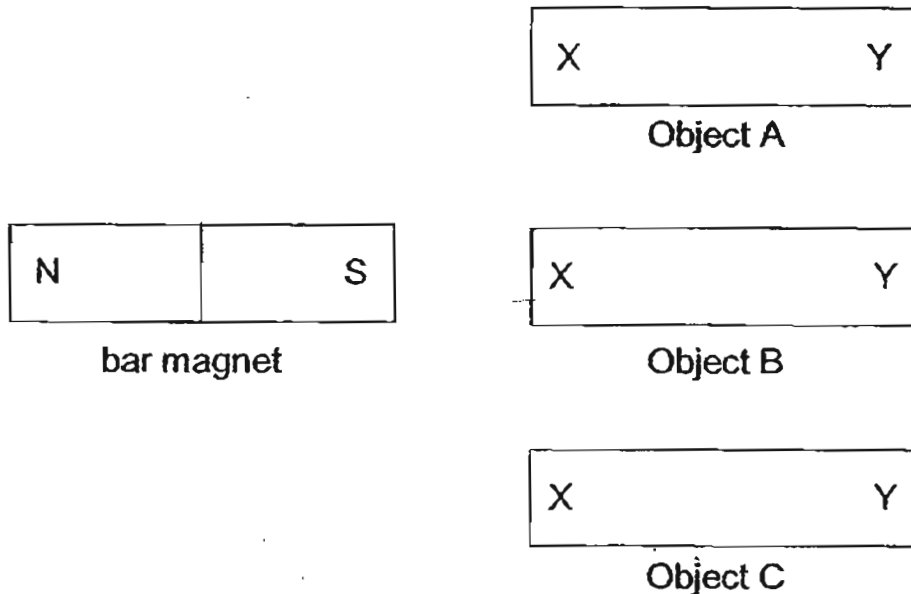


What are the shaded poles of the three magnets?

	Magnet X	Magnet Y	Magnet Z
(1)	South	North	South
(2)	South	North	North
(3)	North	North	South
(4)	North	North	North

()

25. Suresh carried out an experiment with a bar magnet and three objects, A, B and C, as shown below.



He tested each object with the bar magnet and recorded his results in a table below.

Object	Results
A	X is attracted by the South pole but Y is repelled by it.
B	X and Y are attracted by the South pole.
C	Nothing happened at X or Y when the magnet was brought close to it.

Based on the results, which statement below is correct?

- (1) Object B is a magnet.
- (2) Object C is made of iron.
- (3) Object A and B are magnetic materials.
- (4) Object A and C are non-magnetic materials. ()

For Questions 26 to 30, please refer to Booklet K. — NO OTHER NO ANSWERS

End of Section A

**Pei Chun Public School
Continual Assessment – 2011
Science
Primary 3**

Name: _____ ()

Class : Pri. 3 ()

Date : 25 August 2011

Time : 1 h 30 min

Science Teacher: _____

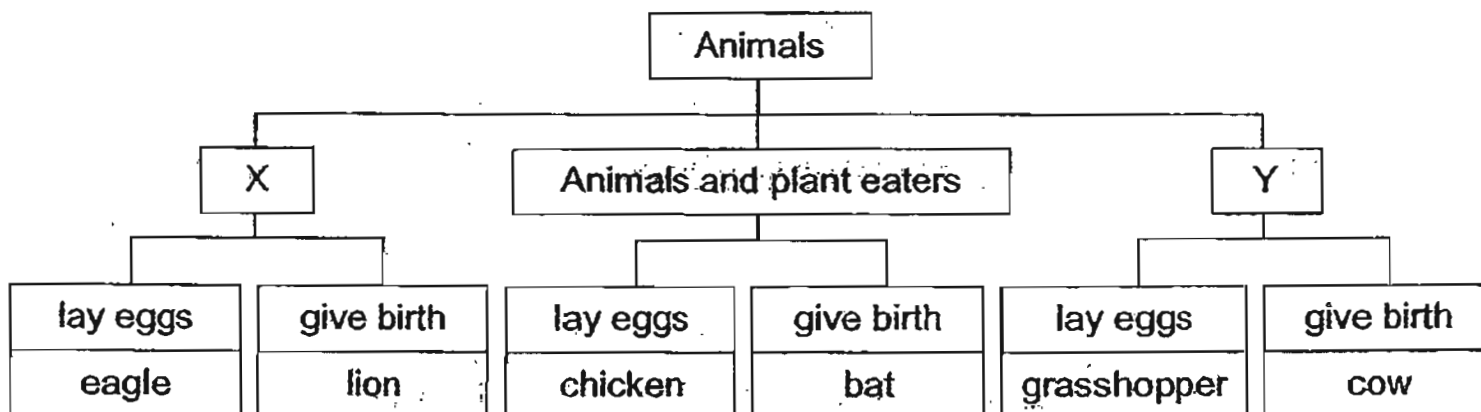
Parent's signature: _____

Section A	60
Section B	30
Booklet K (excludes MCQs)	10
Total	100

Section B (30 marks)

For questions 31 to 40, write your answers in the spaces provided.

31. Study the classification chart below.



Fill in the headings for groups X and Y.

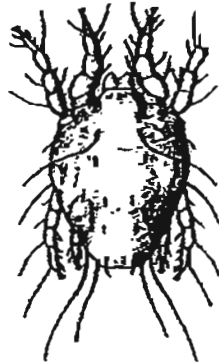
(2 m)

X	
Y	

SCORE

--

32. The diagram below shows a dust mite under the microscope.



Bobby wanted to find out if the animal is an insect. He carried out the following steps:

Step 1: Measure its length.

Step 2: Check if it had wings.

Step 3: Count the number of legs.

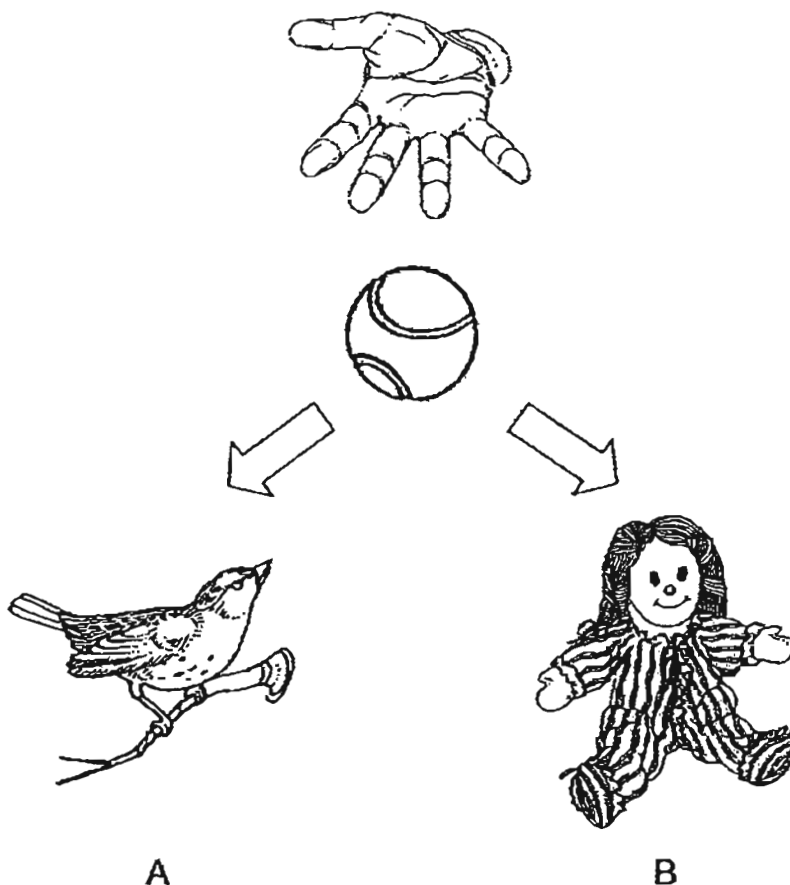
Step 4: Count the number of body parts.

- (a) Which of the steps above is/are correct in determining if the animal is an insect? (2 m)

- (b) Name one other characteristic of insects. (1 m)

SCORE

33. Study the diagram carefully.

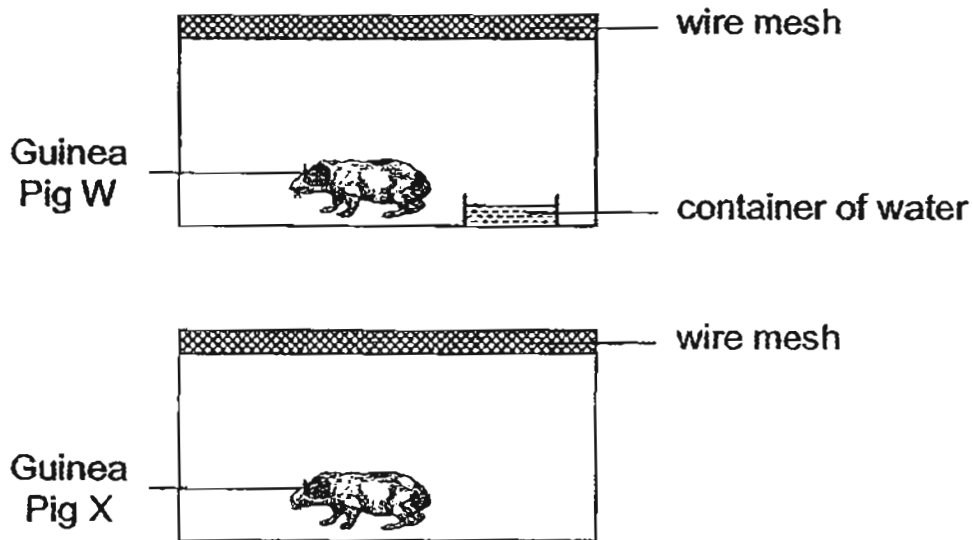


(a) Which thing, A or B, will move away on its own when a ball is thrown towards it? (1 m)

(b) Give a reason for your answer in (a). (1 m)

SCORE

34. The diagram below shows two healthy guinea pigs in separate containers that are covered with a wire mesh.



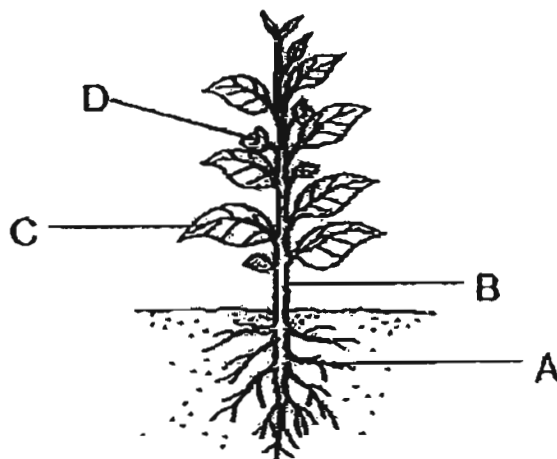
(a) Based on the diagrams above, which guinea pig, W or X, will live longer? (1 m)

(b) Give a reason for your answer in (a). (1 m)

(c) State what Guinea Pig X needs in order to survive. (2 m)

SCORE

35. The diagram below shows a mature balsam plant.



(a) Based on the diagram above, draw lines to match the correct functions to the plant parts A, B, C and D. (2 m)

Offers support to the leaves, allowing them to reach sunlight.	•	•	A
Attracts insects to ensure fruit and seeds are produced.	•	•	B
Provides support by anchoring the plant.	•	•	C
Make food for the plant.	•	•	D

(A line is drawn from the dot next to 'Attracts insects...' to the dot next to 'D'.)

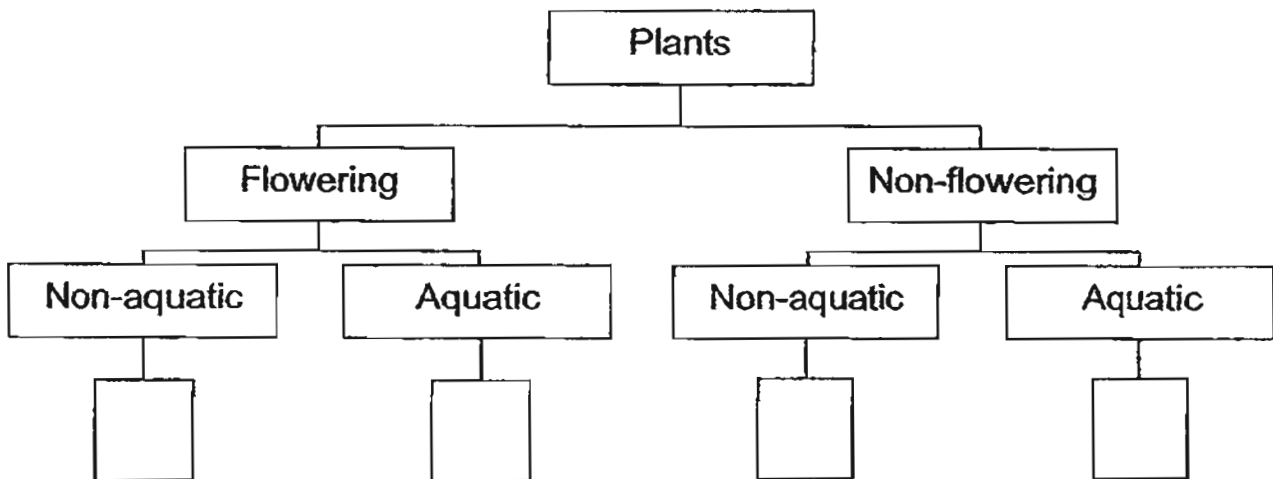
(b) Which letter, A, B, C or D, will a celery stalk be matched to? (1 m)

SCORE

36. The table below gives information on four plants, T, U, V and P, based on two characteristics. A tick (✓) shows that the plant has the characteristics.

Characteristics	T	U	V	P
Bears fruit		✓		✓
Grows on land	✓			✓

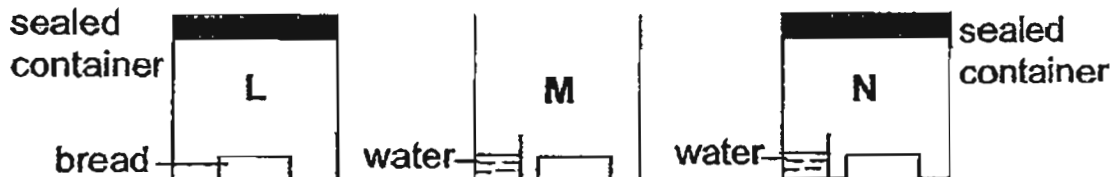
The four plants, T, U, V and P, are classified in the chart below. Write the letters in the correct box. (4 m)



37. Mould grew on a loaf of bread left on the kitchen table after one week.

(a) What conditions allow the mould to grow on the bread? (2 m)

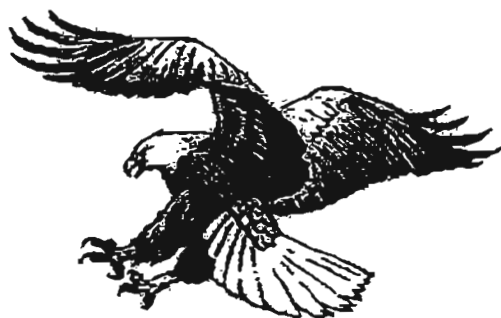
- (b) Below shows three containers, L, M and N, with a piece of bread each and left in a room.



Arrange the letters, L, M, and N, starting with the bread in the container that will grow mould the fastest to the bread that will grow mould the slowest. (1 m)

□ , □ , □

38. Study the animals carefully.



eagle



angelfish



swordfish



butterfly

- (a) Based on the diagrams above, put the animals above into two equal groups according to the way they move in the table below. (2 m)

Group P	Group Q

- (b) Based on the diagrams, name two body parts of the swordfish that help it to move. (2 m)

- i. _____
- ii. _____

SCORE

39. May Lee carried out an experiment with three strings of equal length and thickness. She placed 20 g weights on each string until each broke. Her results are shown in the table below.

String	Weight placed on the string (g)
X	180
Y	80
Z	100

- (a) What was May Lee trying to find out in this experiment? (1 m)

- (b) Which string, X, Y or Z, should be used to tie a 100 g object in place? (1 m)

40. The following objects are classified according to the materials they are made of.

textbook	bottle cap	magazine
raincoat	envelope	pail

- (a) Place the objects into the classification table below. (1 m)

M	N

- (b) Name the materials of the objects classified in the table above. (2 m)

M: _____

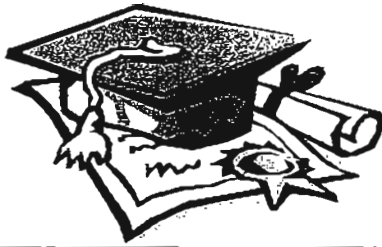
N: _____

No Str
No Ans

→ For Questions 41–44, please refer to Booklet K.
End of Section B

SCORE

--

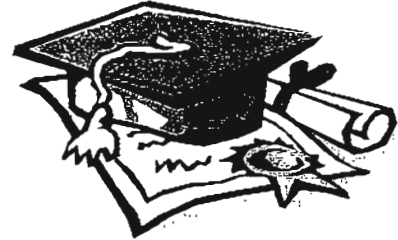


ANSWER SHEET

EXAM PAPER 2011

**SCHOOL : PEI CHUN
SUBJECT : PRIMARY 3 SCIENCE**

TERM : CA2



Q1	Q2	Q3	Q4	Q5	Q6	Q7	Q8	Q9	Q10	Q11	Q12	Q13	Q14	Q15	Q16	Q17
3	2	4	1	2	3	1	4	4	2	2	3	4	3	2	3	1

Q18	Q19	Q20	Q21	Q22	Q23	Q24	Q25
3	4	3	4	1	2	1	3

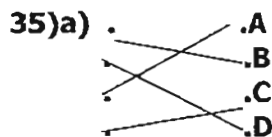
[Q26 to Q30
Booklet K - NO ANSWER]

31)X: Animal eaters. Y: Plant eaters.

32)a)Step 3 and 4 are correct in determining if the animal is an insect.
b)Insects have a pair of feelers.

33)a)Thing A will move away on its own when a ball is thrown towards it.
b)Thing A is a living thing and it respond to changes.

34)a)Guinea Pig W will longer.
b)Guinea Pig W has water but Guinea Pig X don't have water, so Guinea Pig W can live longer.
c)Guinea Pig X needs water and food in order to survive.



b)Letter B will be matched to celery stalk.

36)P Q T V

37)a)Warmth and damp allow the mould to grow on the bread.
b)M, N, L

38)a)Group P
Butterfly
Eagle

Group Q
Angelfish
Swordfish

b)i)Tail.
ii)Fin.

39)a)Which strings is stronger.

b)String X should be used to tie a 100g object in place.

40)a)M _____ N

raincoat

magazine

bottle cap

envelope

pail

textbook

b)M: Plastic

N: Paper