

CATHOLIC HIGH SCHOOL  
PRIMARY THREE  
CONTINUAL ASSESSMENT 2  
2008

SCIENCE

Name: \_\_\_\_\_ (

Class : Primary 3 \_\_\_\_\_

Date : 21 August 2008

BOOKLET A

20 Questions  
40 Marks

Total Time for Booklets A & B : 1 hour 30 min

**Instructions to Candidates**

Do not open this booklet until you are told to do so.  
Follow all instructions carefully.  
Answer all questions.

**Section A : Multiple Choice Questions (40 marks)**

For each question from 1 to 20, four options are given. One of them is the most suitable answer. Make your choice (1, 2, 3 or 4) on the Optical Answer Sheet.

1. Which one of the objects below is made from things which was never alive?

(1)



Wooden spoon

(2)



Paper flowers

(3)



Glass jar -

(4)



Car tyre

2. Look at the pictures carefully.



Shiitake Mushroom

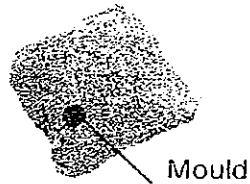


Fern

What is the similarity between a shiitake mushroom and the fern?

- (1) Both of them are not plants.
- (2) Both of them are non-living things.
- (3) Both of them reproduce by spores.
- (4) Both of them can make their own food.

3. Which one of the following is not true about the bread mould?



- (1) It is a type of fungi.
- (2) It is a non-living thing.
- (3) It reproduces by spores.
- (4) It gets its food from the bread.

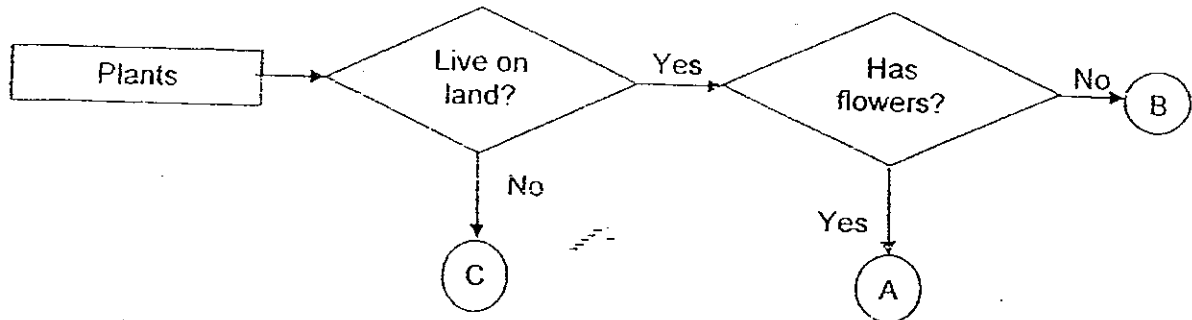
4. Study the statements about plants below.

- A Some non-flowering plants bear flowers too.
- B Some flowering plants bear flowers only during certain time of the year.
- C Young flowering plants do not bear flowers. They bear flowers only when they have become adult plants.

Which of the following is/are true of all plants?

- (1) A only
- (2) A and C only
- (3) B and C only
- (4) A, B and C

5. Study the flowchart below.



Which of the following are examples of plant A and B?

|     | A          | B                |
|-----|------------|------------------|
| (1) | Rose       | Orchid           |
| (2) | Sunflower  | -Conifers        |
| (3) | Water Lily | Mushroom         |
| (4) | Mould      | Stag's Horn Fern |

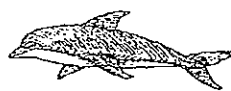
6. Look at the 4 animals below.



Seal



Whale



Dolphin



Walrus

Which of the following statements are true of the 4 animals?

- A Their young feed on the milk from their mothers.
- B They have fins to swim in water.
- C They have hair on their bodies.
- D They have gills to breathe in air.

- (1) A and C only
- (2) C and D only
- (3) A, C and D only
- (4) A, B, C and D

7. Study the table below.

| Animals | Can fly? | Feeds young with milk? | Body covered with hair? |
|---------|----------|------------------------|-------------------------|
| W       | Yes      | No                     | No                      |
| X       | No       | No                     | Yes                     |
| Y       | Yes      | Yes                    | No                      |
| Z       | Yes      | Yes                    | Yes                     |

Which one of the following animals is a bat?

- (1) W
- (2) X
- (3) Y
- (4) Z

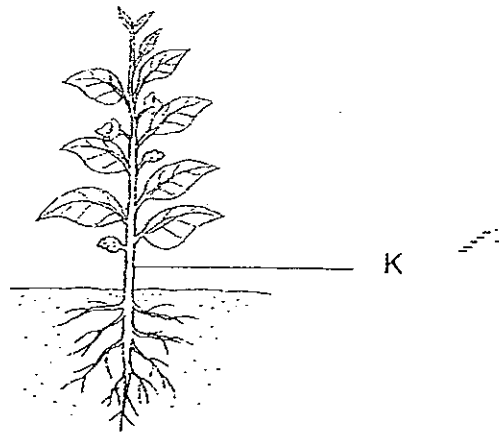
8. Which of the following statements best explains why a gardener has to try hard to pull the shrub out of the soil?

- (1) The soil is damp and sticky.
- (2) The shrub has a strong woody stem.
- (3) The shrub has many branches and leaves.
- (4) The shrub has roots that hold it firmly to the ground.

9. Which of the following help the papaya plant to reproduce?

- (1) Roots
- (2) Seeds
- (3) Stems
- (4) Leaves

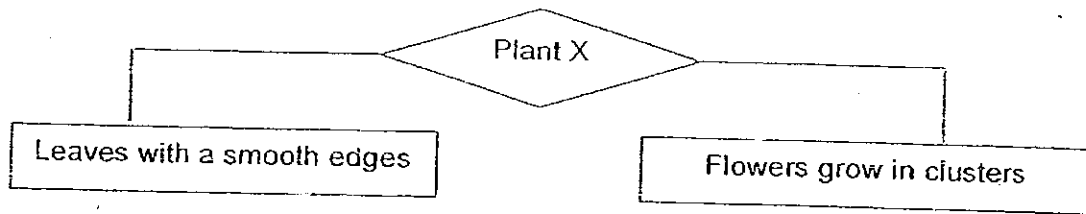
10. Study the diagram below.



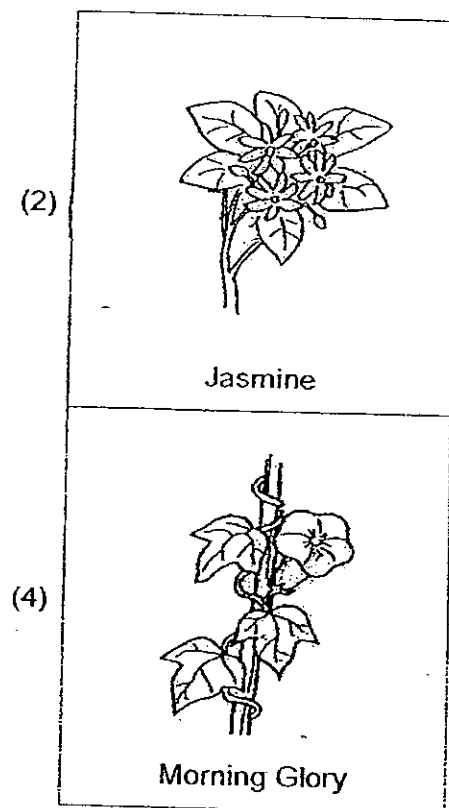
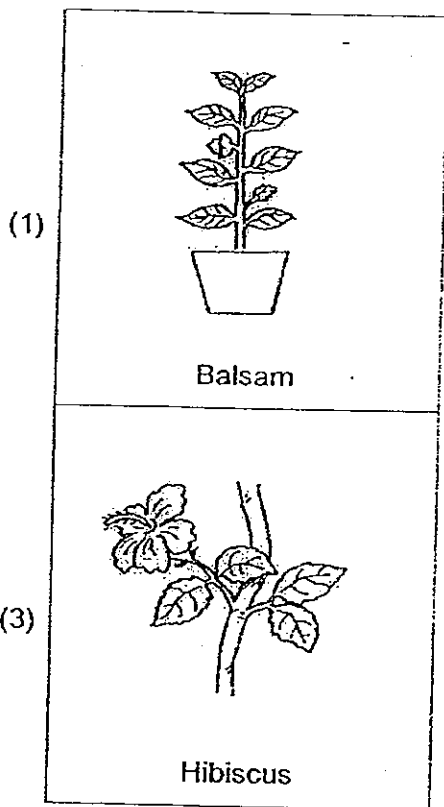
What is the importance of the plant part labelled K?

- A It transports food to the leaves.
  - B It holds the plant firmly to the ground.
  - C It supports the branches and leaves.
  - D It contains tiny tubes that transport water and mineral salts.
- 
- (1) A and B only
  - (2) C and D only
  - (3) A, B and C only
  - (4) A, B and D only

11. Study the classification table below.

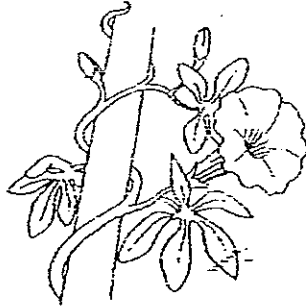


What can plant X be?





12. Study the plant below.



Which one of the following characteristics help the plant to get more sunlight?

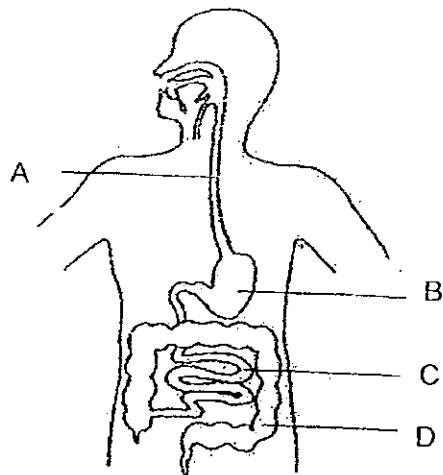
- A Its leaves have veins.
- B It has flowers that grow singly.
- C It grows upwards by climbing up the support.

- (1) B only
- (2) C only
- (3) B and C only
- (4) A, B and C

13. Which of the following options under the headings is classified wrongly?

|     | Digestive System | Skeletal System |
|-----|------------------|-----------------|
| (1) | Gullet           | Skull           |
| (2) | Mouth            | Ribcage         |
| (3) | Large intestine  | Spine           |
| (4) | Nose             | Heart           |

The diagram below shows the human digestive system. Use the diagram to answer Q14 and Q15.



14. In which part of the body is digested food passed into the blood vessel?

- (1) A
- (2) B
- (3) C
- (4) D

15. In which part of the body is undigested food stored?

- (1) A
- (2) B
- (3) C
- (4) D

Use the following information to answer Questions 16 and 17.

4 thin sheets of materials E, F, G and H of similar sizes were weighed individually before they were put into 4 beakers containing equal amounts of water. After 15 minutes, each sheet was weighed again. Their masses were recorded in the table below.

| Material | Mass at the start | Mass after 15 minutes |
|----------|-------------------|-----------------------|
| E        | 8 g               | 16 g                  |
| F        | 10 g              | 10 g                  |
| G        | 12 g              | 14 g                  |
| H        | 13 g              | 18 g                  |

16. Which material absorbs the most amount of water?

- (1) E
- (2) F
- (3) G
- (4) H

17. Which one of the material is the most suitable for making a tent?

- (1) E
- (2) F
- (3) G
- (4) H

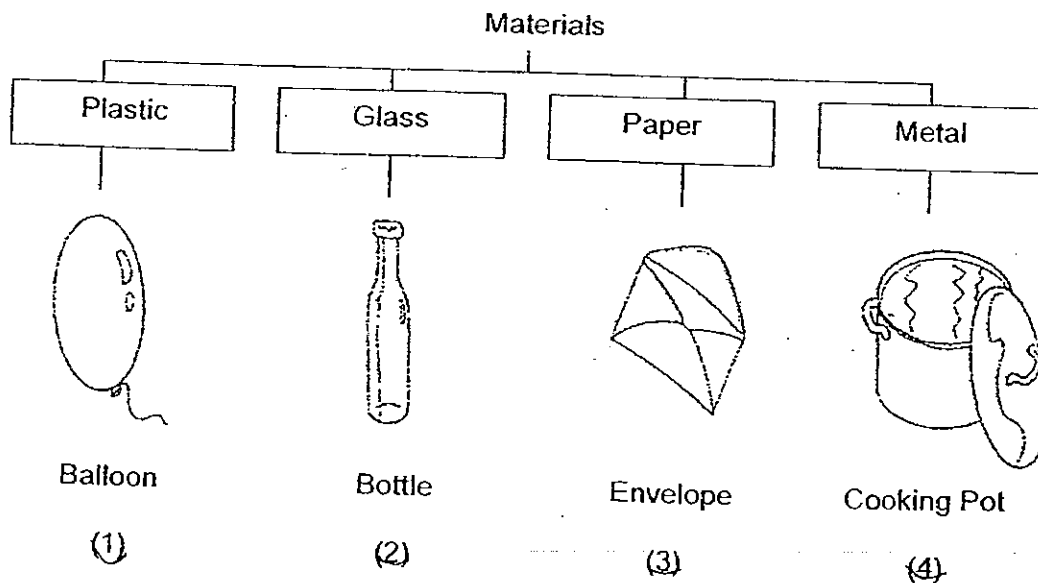
18. Which of the following properties should be considered when choosing a material for a raincoat?

- A Light
- B Stiff
- C Flexible
- D Waterproof

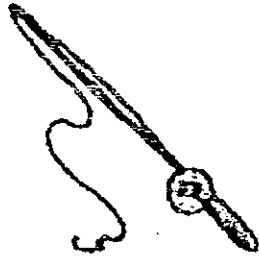
- (1) A and D only
- (2) B and D only
- (3) A, C and D only
- (4) A, B, C and D

19. The objects below are classified according to the types of materials they are made of.

Which one of the objects is wrongly placed?

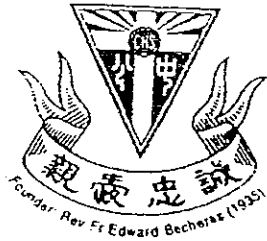


20. Ali says, "This fishing rod is strong enough to pull a big fish out of the water without breaking." Which physical property of the fishing rod does Ali describe?



- (1) Length
- (2) Strength
- (3) Flexibility
- (4) Hardness

- End of section A-



CATHOLIC HIGH SCHOOL  
PRIMARY THREE  
CONTINUAL ASSESSMENT 2  
2008

SCIENCE

Name: \_\_\_\_\_ ( )

Class : Primary 3 \_\_\_\_\_

Date : 21 August 2008

BOOKLET B

15 Questions  
40 Marks

Total Time for Booklets A & B : 1 hour 30 min

**Instructions to Candidates**

Do not open this booklet until you are told to do so.  
Follow all instructions carefully.  
Answer all questions.

Parent's Signature: \_\_\_\_\_

Date: \_\_\_\_\_

| Score     |      |
|-----------|------|
| Section A | / 40 |
| Section B | / 40 |
| Total     | / 80 |

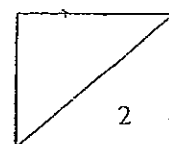
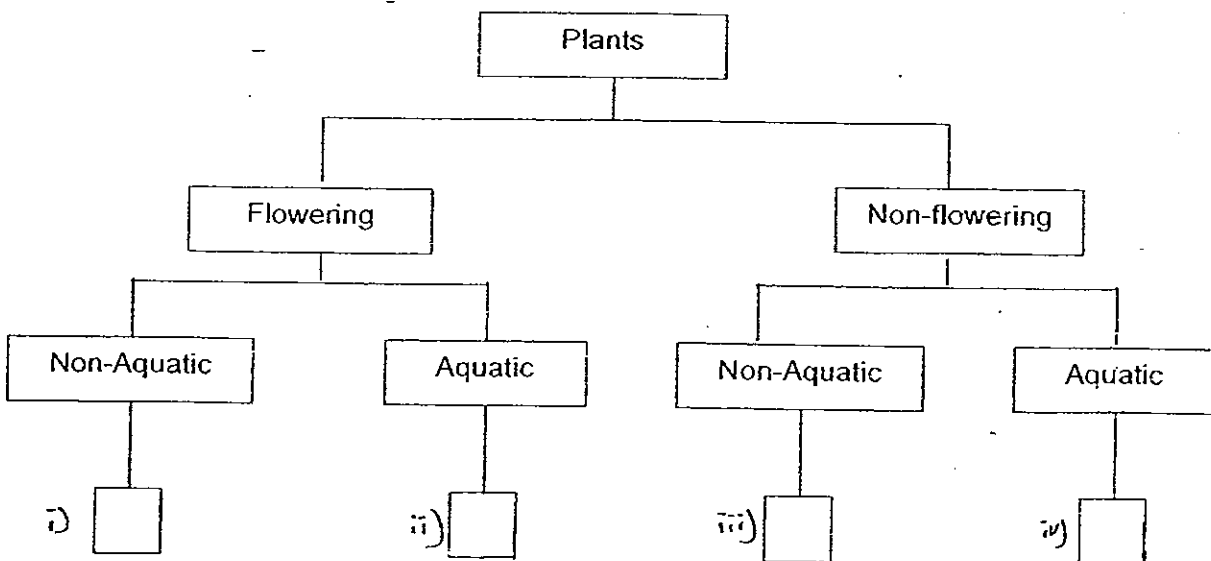
**Section B : Open-Ended Questions (40 marks)**

For questions 21 to 35, write your answers in this booklet. The maximum number of marks which can be awarded is shown in brackets [ ] at the end of each question or part-question.

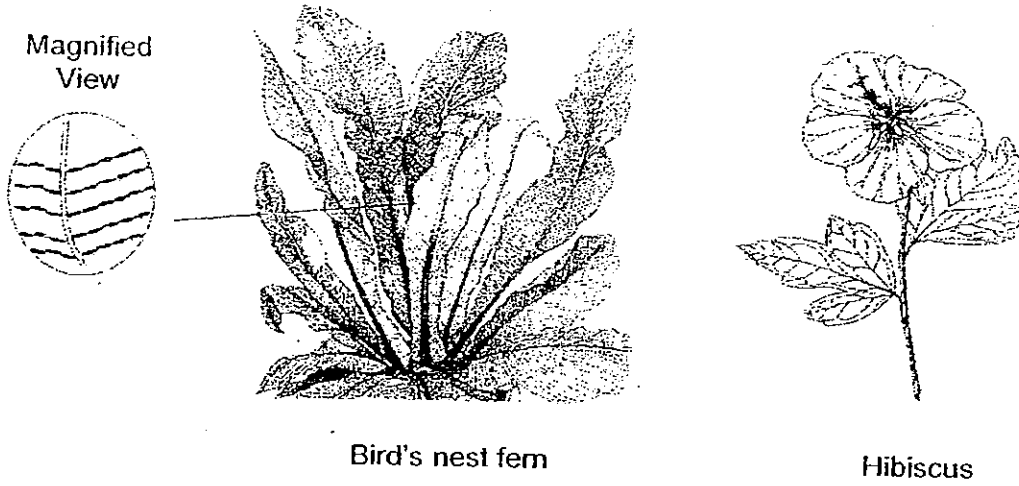
21. The table below gives information on two plants, F and G based on two characteristics. A tick (✓) shows that the plant has the characteristic.

| Characteristics \ Plant | F | G |
|-------------------------|---|---|
| Bears fruit             | ✓ |   |
| Grows on land           |   |   |

Using the information above, classify Plant F and G in the table below. [2]



22. Look at the pictures of the two living things given below.



(a) How are the plants similar in the way they get their food? [1]

---

---

(b) State two ways how the plants are different. [2]  
(Do not compare shape and size)

i

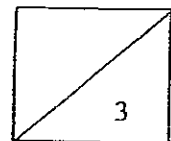
---

---

ii

---

---





23. Observe the following two animals.



Animal A



Animal B

(a) Which animal is an insect?

[1]

---

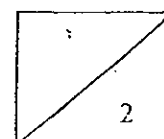
---

(b) Give a reason for your choice of answer in (a).

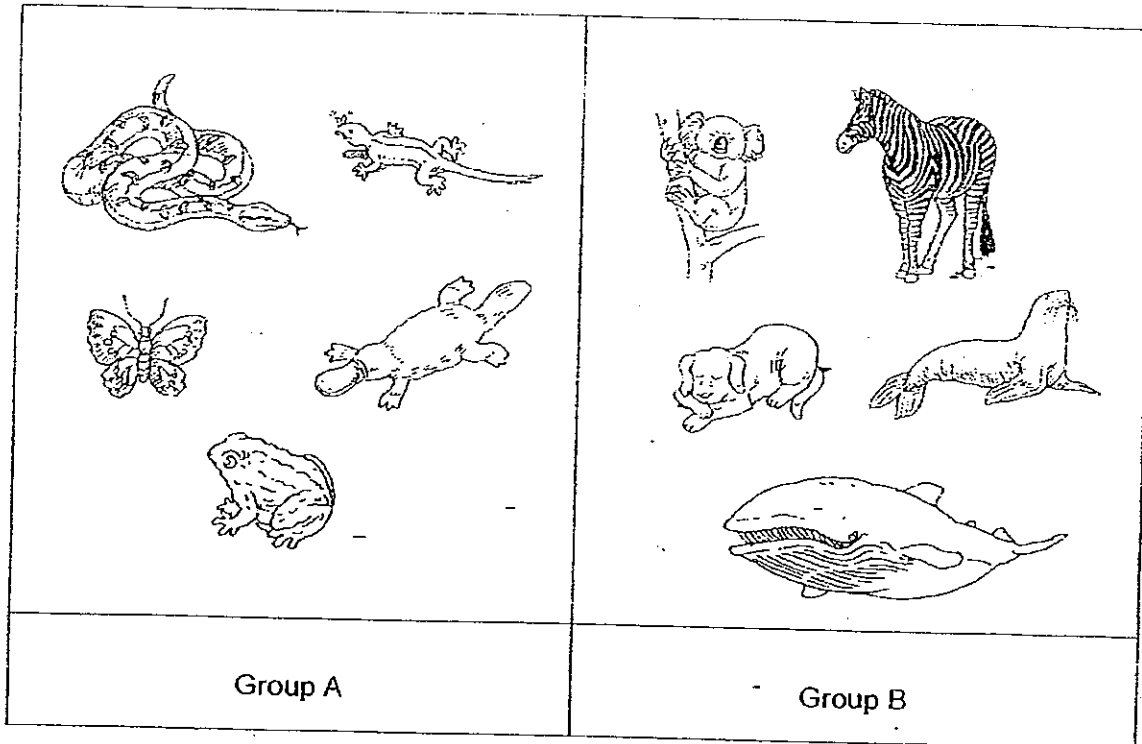
[1]

---

---



24. The animals below are classified into two groups.



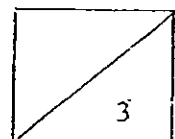
(a) In what ways are the two groups of animals different? [2]

---

---

(b) Based on your answer in (a), which group of animals does a squirrel belong to? [1]

---



25. Jean was drinking some water when she choked on the water that she was drinking.

(a) Which part of the body has the water travelled to? [1]

---

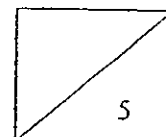
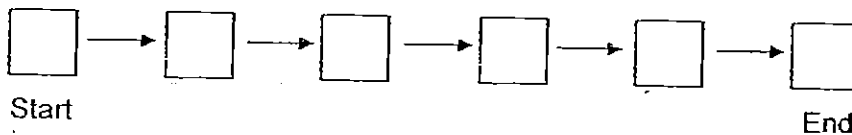
---

(b) If Jean did not choke on the water, where will the water be traveling to just before it reaches her stomach? [1]

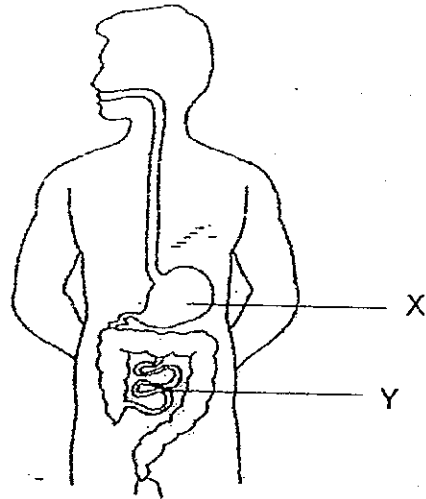
---

26. Arrange the following statements in order to describe what happens when we eat. [3]

- A The undigested food goes into the large intestine and water is removed from it.
- B The tongue helps to mix the food with saliva.
- C After a few hours, the food in the stomach becomes almost liquid and goes into the small intestine.
- D The food travels down the gullet into the stomach.
- E The digested food passes into the blood.
- F The solid waste is passed out of the body through the anus.



27. Study the diagram below.



(a) Identify organs X and Y.

[2]

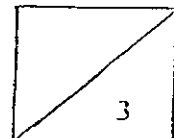
X \_\_\_\_\_

Y \_\_\_\_\_

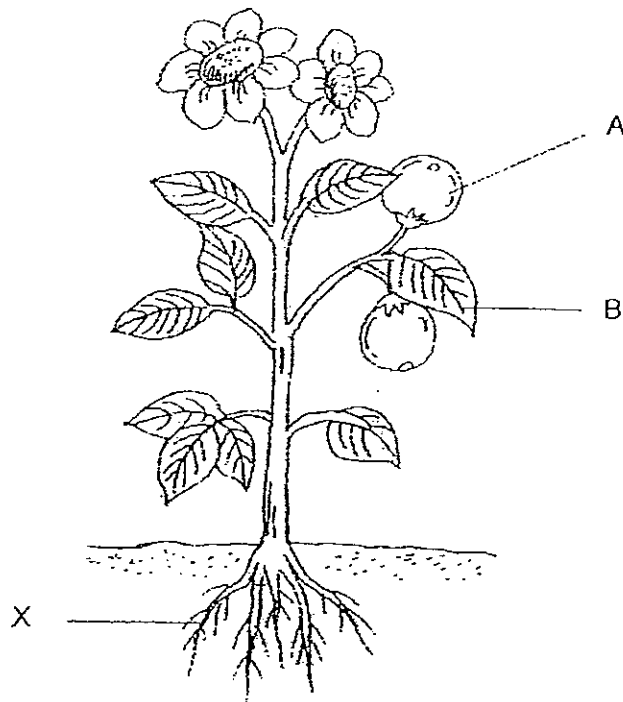
(b) How are these two organs alike?

[1]

\_\_\_\_\_  
\_\_\_\_\_



28.



(a) Name part A and B of the plant.

[2]

A \_\_\_\_\_

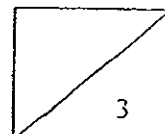
B \_\_\_\_\_

(b) What function will the plant not be able to carry out if part X is removed?

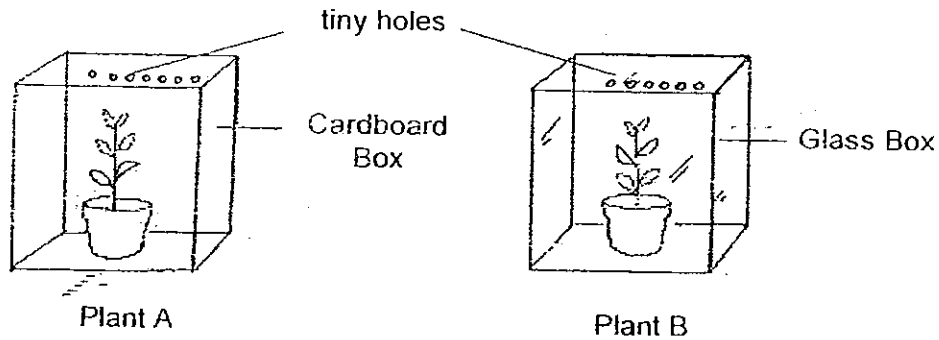
[1]

\_\_\_\_\_

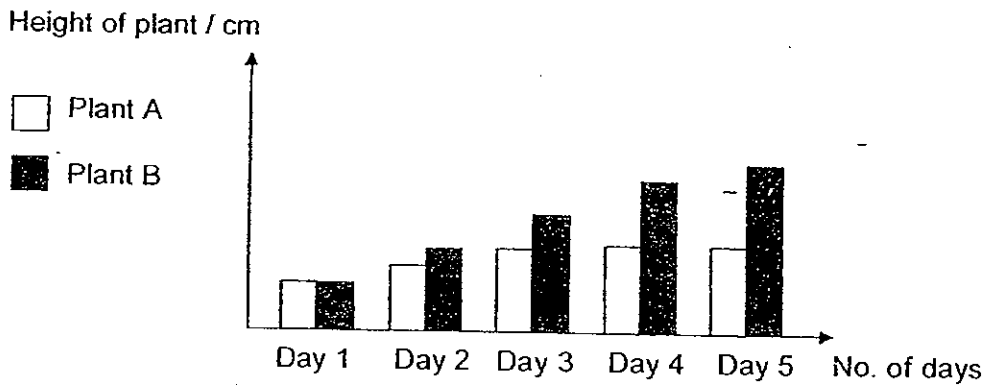
\_\_\_\_\_



29. Kendrick conducted an experiment as shown below.



He put 2 similar plants growing in the same type of soil into 2 different boxes with tiny holes. Both plants are watered daily and were placed under the sun for five days. The results were recorded in the graph below.



(a) Which of the plant will grow taller?

[1]

---

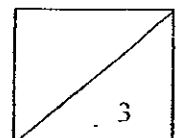
(b) What does this experiment show about plants?

[2]

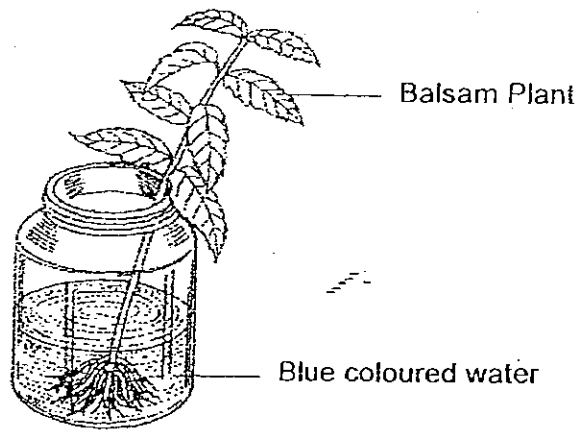
---



---



30. Joe placed a balsam plant into a jar containing blue coloured water as shown in the diagram.



- (a) What will he observe after a few days? [1]

---

---

- (b) What does the above experiment show? [1]

---

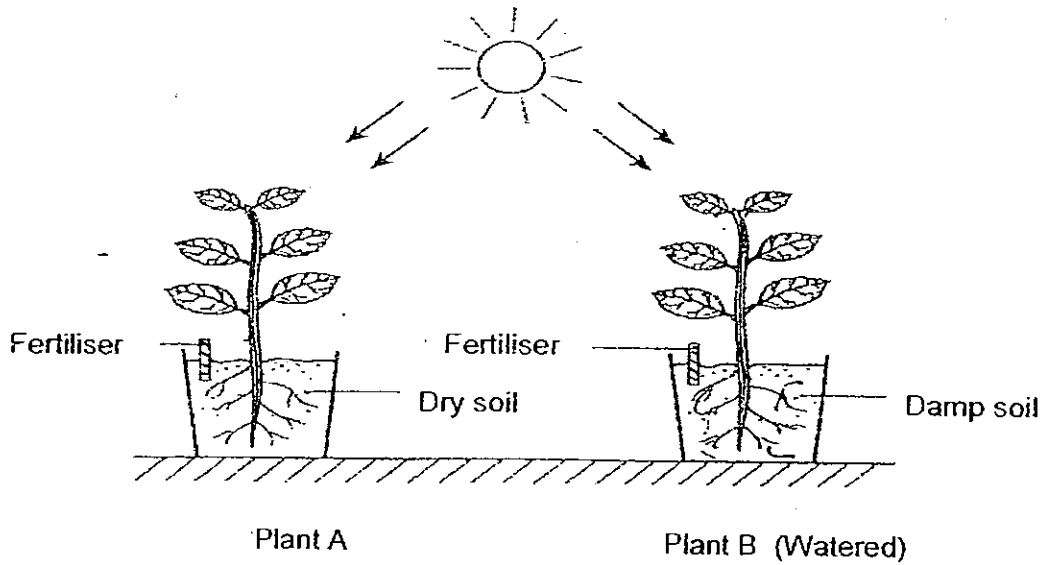
---

- (c) What will happen if all the leaves are removed? [1]

---

---

31. Jane carried out an experiment as shown in the diagram below. She measured the height of the two plants daily for two weeks.



- (a) What is the aim of her experiment?

[1]

---

---

- (b) What do you think will happen to both the plants after four weeks?

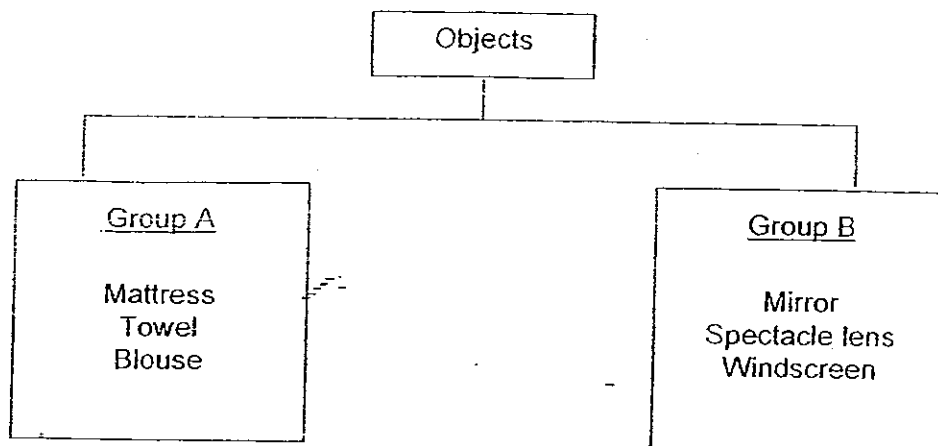
[2]

---

---



32. Study the two groups of objects in the classification table below

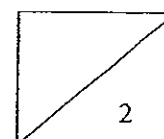


(a) Give a suitable heading for group A and group B

[2]

Group A \_\_\_\_\_

Group B \_\_\_\_\_

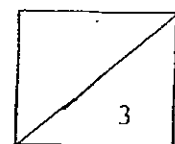
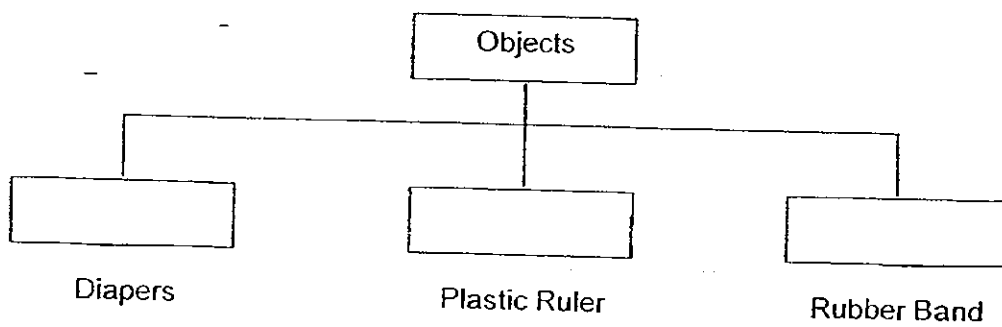


33. The table below shows the properties of three objects. A tick (✓) shows that the object has the property.

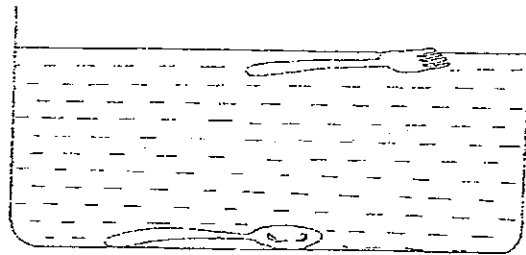
| Object | Gets stretched easily | Bends easily | Absorbent |
|--------|-----------------------|--------------|-----------|
| A      | ✓                     | ✓            |           |
| B      | ✓                     | ✓            | ✓         |
| C      |                       | ✓            |           |

In the classification table below, objects are grouped according to their common properties. Put objects A, B and C in the most appropriate boxes.

[3]



34. Jared placed a fork and a spoon in a container of water.



(a) He concluded that both the fork and the spoon are made of metal. Is Jared's conclusion true or false? [1]

---

---

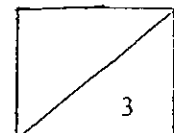
(b) Give a reason for your answer above. [1]

---

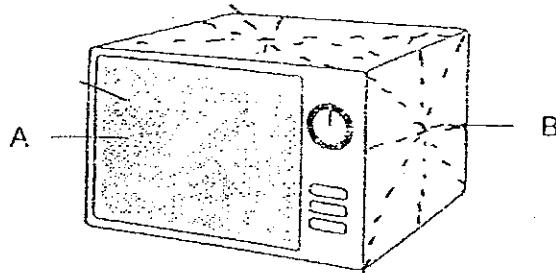
---

(c) Jared added one more item in the container of water. State if the item would float or sink. [1]

| Item              | Float or Sink |
|-------------------|---------------|
| Wooden chopsticks |               |



35. Study the picture below.



Oven

(a) What are the materials used to make A and B?

[1]

A \_\_\_\_\_

B \_\_\_\_\_

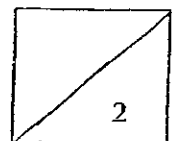
(b) State the essential properties of the material chosen to make A.

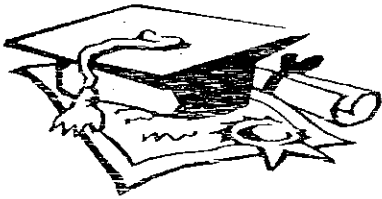
[1]

\_\_\_\_\_

\_\_\_\_\_

- End of Paper -  
Please check your work!





# ANSWER SHEET

EXAM PAPER 2008

SCHOOL : CATHOLIC HIGH PRIMARY SCHOOL  
SUBJECT : PRIMARY 3 SCIENCE

TERM : CA 2

|    |    |    |    |    |    |    |    |    |     |     |     |     |     |     |     |     |
|----|----|----|----|----|----|----|----|----|-----|-----|-----|-----|-----|-----|-----|-----|
| Q1 | Q2 | Q3 | Q4 | Q5 | Q6 | Q7 | Q8 | Q9 | Q10 | Q11 | Q12 | Q13 | Q14 | Q15 | Q16 | Q17 |
| 3  | 3  | 2  | 3  | 2  | 1  | 4  | 4  | 2  | 2   | 2   | 2   | 4   | 3   | 4   | 1   | 2   |

|     |     |     |
|-----|-----|-----|
| Q18 | Q19 | Q20 |
| 3   | 1   | 2   |

21)ii)F iv)G

22) a) They take in sunlight to make their food.

b) i) The Hibiscus is a flowering plant while the Bird's nest fern is a non-flowering plant.

ii) The Hibiscus reproduces by seeds but the Bird's nest fern reproduces by spores.

23) a) Animal A is an insect.

b) Animal A has six legs but animal B has more than six legs.

24) a) Group A animals lay eggs but Group B animals give birth to young alive.

b) It belongs to Group B.

25) a) It has travelled to the windpipe.

b) It would be traveling in the gullet.

26) B → D → C → E → A → F

27)a) X = Stomach      Y = Small intestine

b) They digest food.

28)a) A) fruits      B) leaf

b) It will not be able to take in water and mineral salts.

29)a) plant B will grow taller.

b) Plants need sunlight to grow.

30)a) The leaves and stem would turn blue.

b) The roots take in water and the water travels through tubes to all parts of the plant.

c) The plant will not be able to make its food and eventually die.

31)a) It is to investigate if plants need water to grow healthily.

b) Plant A will die because it does not have water but Plant B is watered so it will live.

32)a) A) Non-water-proof.

B) Water-proof.

33) B, C, A

34)a) False

b) If the fork is made of metal it could possibly sink but it did not.

c) Float

35)a) A: Glass      B: Metal

b) Glass is transparent and withstand heat.