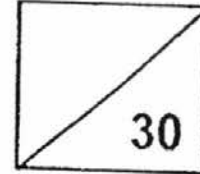




Rosyth School  
Topical Test for 2016  
SCIENCE  
Primary 3

Name: \_\_\_\_\_

Total  
Marks:



Class: Pr 3 \_\_\_\_\_

Register No. \_\_\_\_\_

Duration: 50min

Date: 29 February 2016

Parent's Signature: \_\_\_\_\_

Instructions to Pupils:

1. Do not open the booklet until you are told to do so.
2. Follow all instructions carefully.
3. This paper consists of 2 sections, Part I and Part II.
4. For questions 1 to 8, write the correct answer in the brackets provided.
5. For questions 9 to 13, give your answers in the spaces provided in Part II.

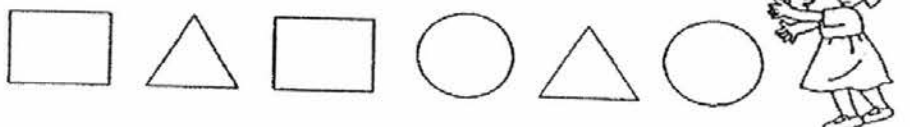
	Maximum	Marks Obtained
Part I	16 marks	
Part II	14 marks	
Total	30 marks	

\* This booklet consists of 10 printed pages. (pg. 1 to 10)

**Part I (16 marks)**

For each question from 1 to 8, four options are given. One of them is the correct answer. Make your choice (1, 2, 3 or 4). Write the correct answer in the bracket provided.

1. Janet was blindfolded and she had to classify the following objects according to their shapes.



Which one of the following senses would Janet be using?

- (1) Sight  
(2) Smell  
(3) Touch  
(4) Hearing

( )

2. Which of the following are true about the characteristics of all living things?

P: All living things grow.

Q: All living things reproduce.

R: All living things move from place to place.

S: All living things need only air and water to survive.

- (1) P and Q only  
(2) Q and S only  
(3) P, Q and R only  
(4) Q, R and S only

( )

3. The classification table below shows 2 groups, Group X and Y.

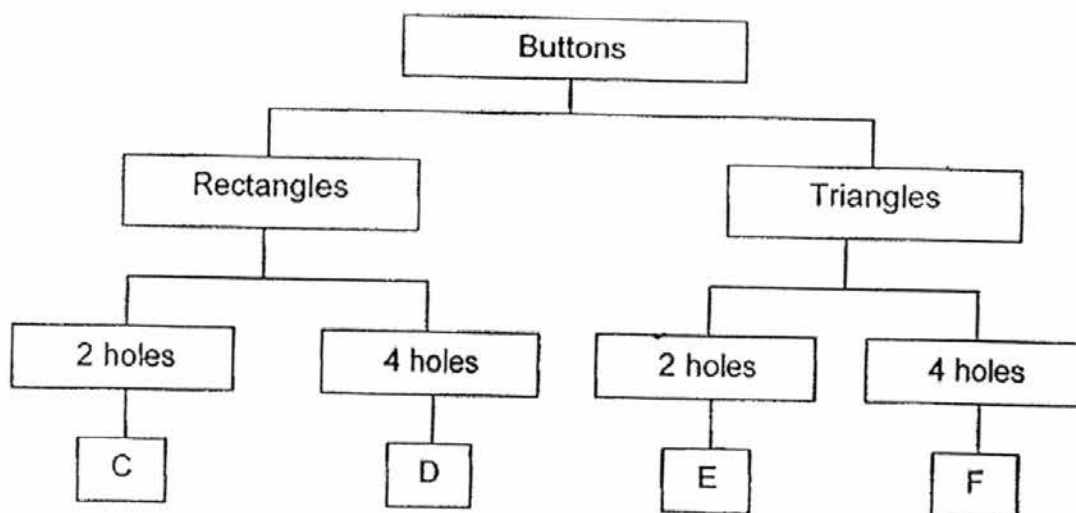
Group X	Group Y
duck	cup
mouldy bread	pencil
water	book
crocodile	toy car

Which one of the following has been grouped wrongly?

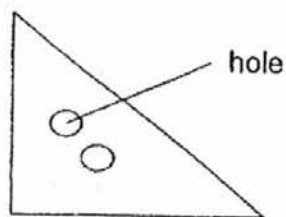
- (1) cup  
(2) book  
(3) water  
(4) mouldy bread

( )

4. Study the classification chart as shown below.



Which group in the classification diagram above does Button M belongs to?



Button M

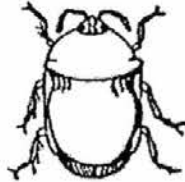
- (1) C
- (2) D
- (3) E
- (4) F

( . )

5. Jay spotted two animals, Animal P and Q. He wanted to find out which animal is an insect.



Animal P



Animal Q

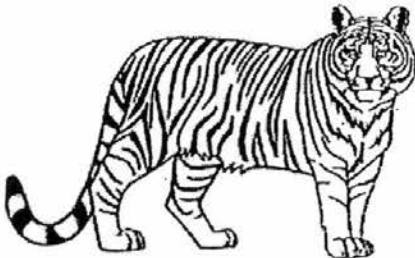
What should he do to find out which animal is an insect?

- A: Measure the body length
- B: Count the number of legs
- C: Count the number of body parts
- D: Check if the animals have wings

- (1) A and C only
- (2) B and C only
- (3) A, B and C only
- (4) B, C and D only

( )

6. The picture below shows Animal Y.



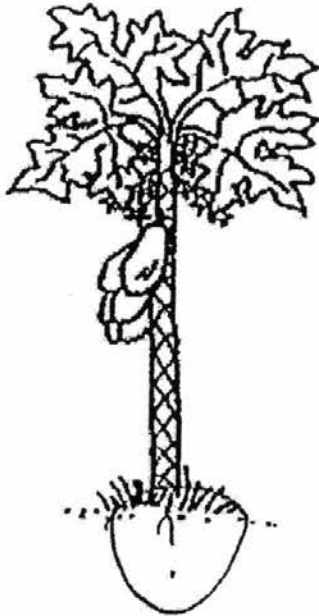
Karen saw Animal Y and said that it has the characteristics of a mammal. Which of the following statements has Karen made in order for her to say so?

- A: It has hair.
- B: It has legs.
- C: It lives on land.
- D: It feeds its young with milk.

- (1) A and D only
- (2) B and C only
- (3) B and D only
- (4) C and D only

( )

7. Four pupils went to a garden and saw a tree as shown below.



They recorded their observations below.

Ali: The tree has leaves.

Bala: The tree has deep roots.

Claire: The tree has a strong stem.

Dan: The tree has fruits growing on it.

Who made a statement that could not be observed?

(1) Ali

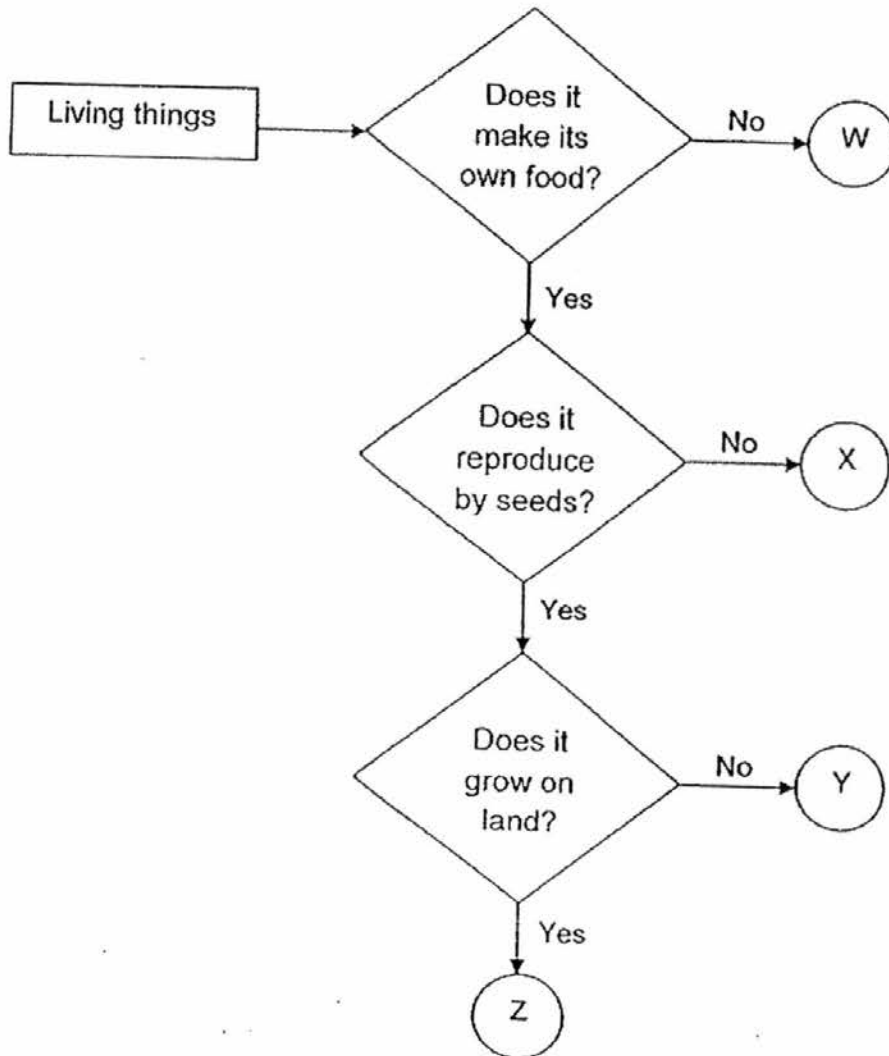
(2) Dan

(3) Claire

(4) Bala

( )

8. Study the flowchart below carefully.



Which letter, W, X, Y or Z best represents a non-flowering plant?

- (1) W
- (2) X
- (3) Y
- (4) Z

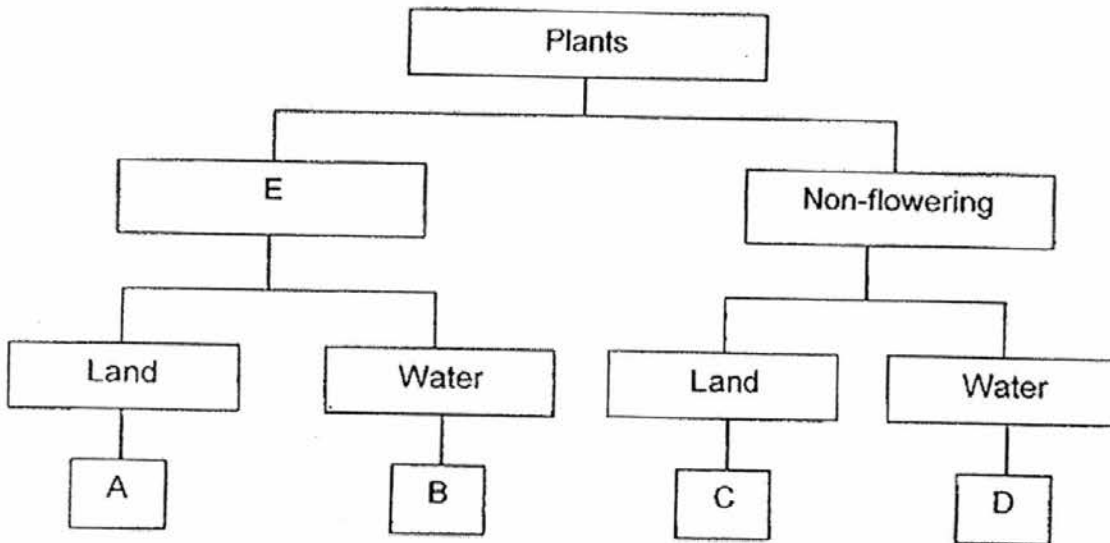
( )

End of Part I

**Part II (14 marks)**

For questions 9 to 13, write your answers in the blanks provided.

9. Study the classification chart as shown below.

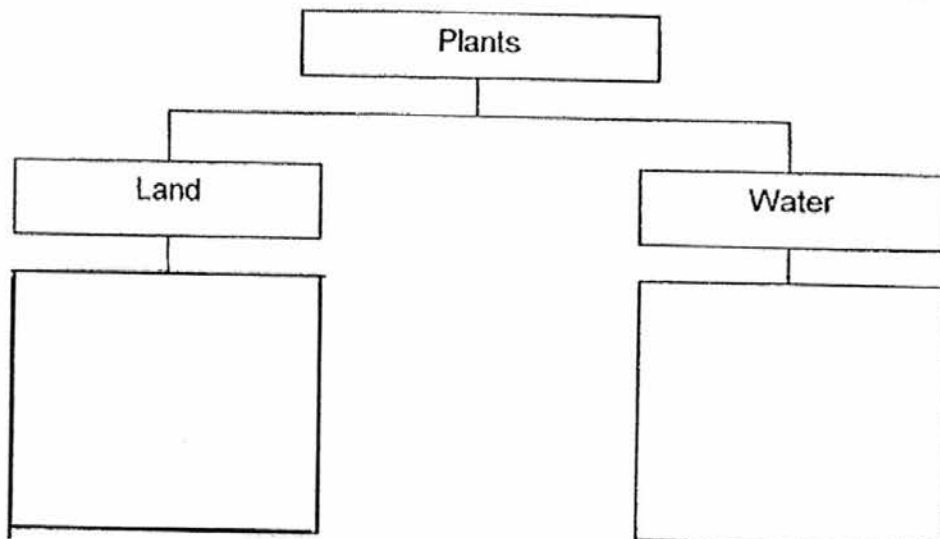


(a) What is a suitable heading for E?

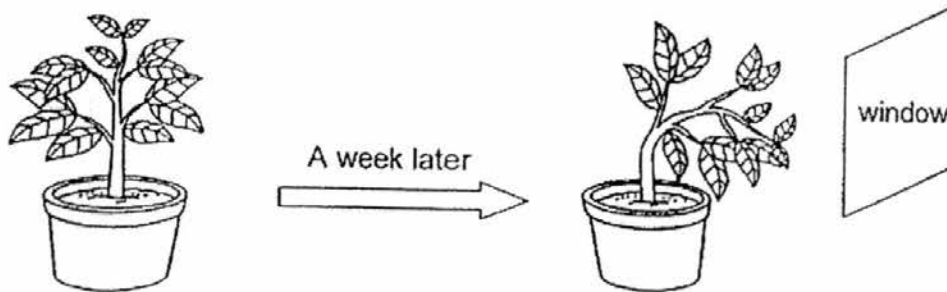
(1m)

(b) The chart below shows another way of classifying plants. Complete the chart by writing A, B, C and D in the boxes below.

(1m)



10. Mr Tan placed his potted plant near the window where there is more sunlight. He also watered it every day. A week later, he observed a change in his plant as shown below.



(a) State Mr Tan's observation of his potted plant after a week. (1m)

---

---

(b) From the observation above, Mr Tan stated that living things can grow and move by themselves. Name another characteristic shown by the above observation. (1m)

---

---

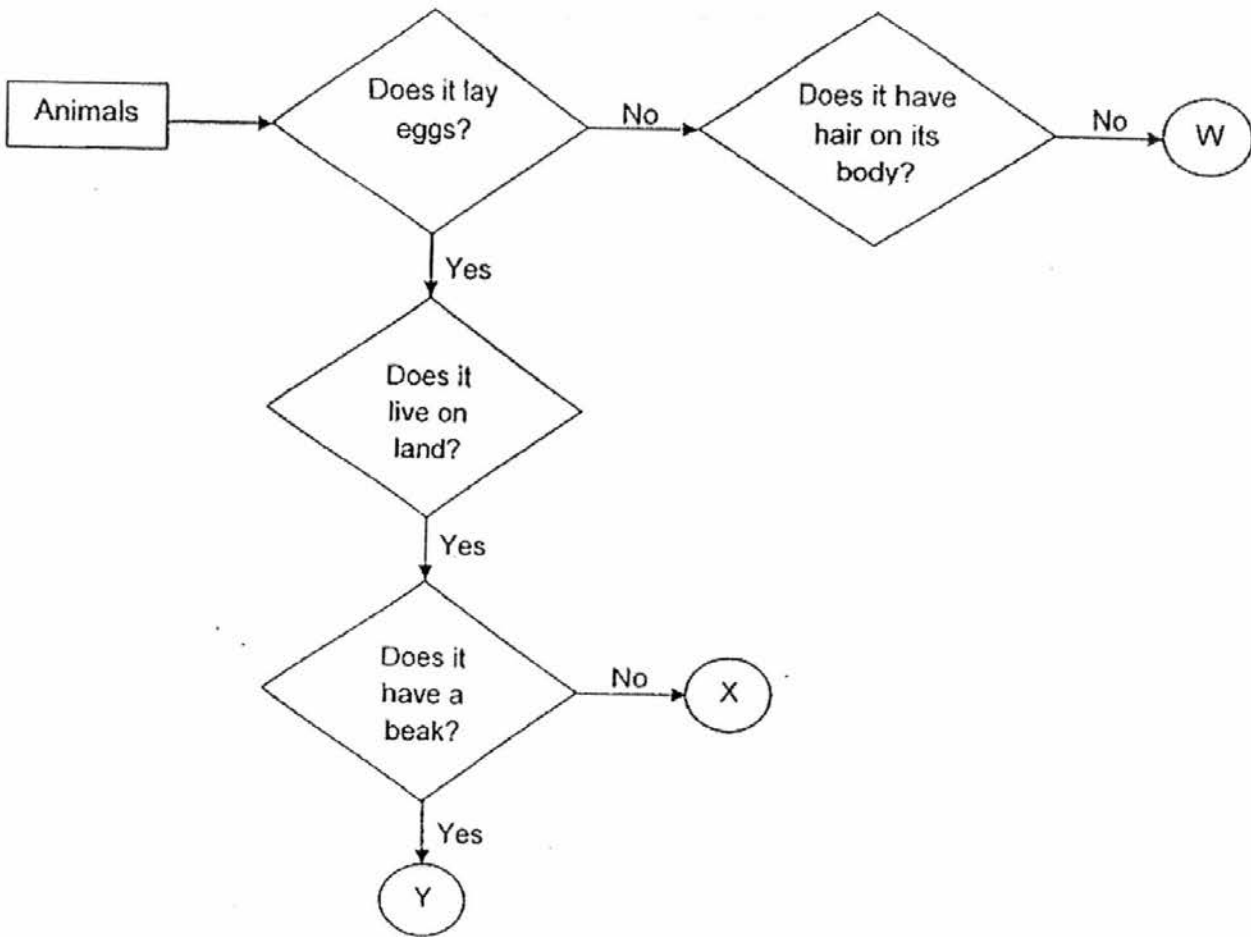
(c) Besides water, what are two other things that the plant needs to stay alive? (1m)

---

---



11. Tina's worksheet has a flowchart as shown below.



(a) Based on the flowchart, identify the animals given below by writing the letter, W, X, or Y. (2m)

i. Reptile

ii. Bird

(b) Can Animal W be a mammal? Explain why. (1m)

---



---

12. Hayley noticed three living things, A, B and C in a park. He observed the living things and stated their characteristics as shown in the table below.

Characteristics	Living Things		
	A	B	C
• Make own food	Yes	No	No
• Reproduce by spores	No	No	Yes
• Can move from place to place	No	Yes	No

- (a) State a similarity between living things, A and C. (1m)

---



---

- (b) State a difference between living things, B and C. (1m)

---



---

- (c) Tina said that living thing C is definitely a flowering plant. Do you agree with her? Explain why. (1m)

---



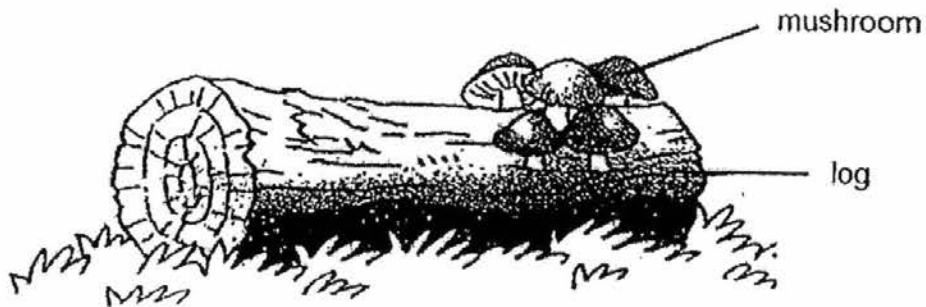
---

- (d) Which group of living things do A and B belong to? Fill in the boxes with 'Plant' or 'Animal'. (1m)

i. A:

ii. B:

13. Kok Ming was walking at the Science garden when he saw a log on the ground. He noticed that there were mushrooms growing on it.



- (a) Why are the mushrooms found growing on the log? (1m)

---

---

- (b) How do mushrooms reproduce? (1m)

---

End Of Paper

EXAM PAPER 2016 (P3)

SCHOOL : ROSYTH

SUBJECT : SCIENCE

TERM : CA1

Q1	Q2	Q3	Q4	Q5	Q6	Q7	Q8		
3	1	3	3	2	1	4	2		

9)a) Flowering plants.

b) Land : A , C      Water : B , D

10)a) Living things can move to the direction of the sun.

b) Plants need air to survive.

c) Plants need sunlight to make food and air to survive.

11)a) i) X    ii) Y

b) No. Animal W does not have hair and mammals have hair.

12)a) Both A and B cannot move from place to place.

b) B reproduces by spores but C does not.

c) No. Flowering plants do not reproduce by spores but C does reproduce by spores.

d) i) Plant    ii) Animal

13)a)It is because mushrooms need to grow on their food and the log is their food.

b)They reproduce by spores.