

2

Pei Chun Public School
Holistic Assessment 1 – Review Assessment 2016
Science
Primary 3

Name : _____ ()

Class : Pri. 3 ()

Date: 26 February 2016

Time: 30 min

Science Teacher : _____

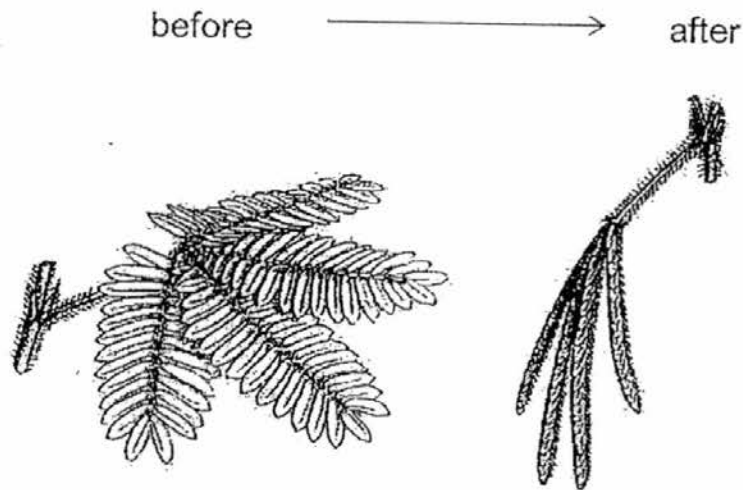
Parent's signature: _____

Section A	10
Section B	10
Total	20

Section A (5 × 2 marks)

For questions 1 to 5, choose the most suitable answer and write its number (1, 2, 3 or 4) in the brackets provided.

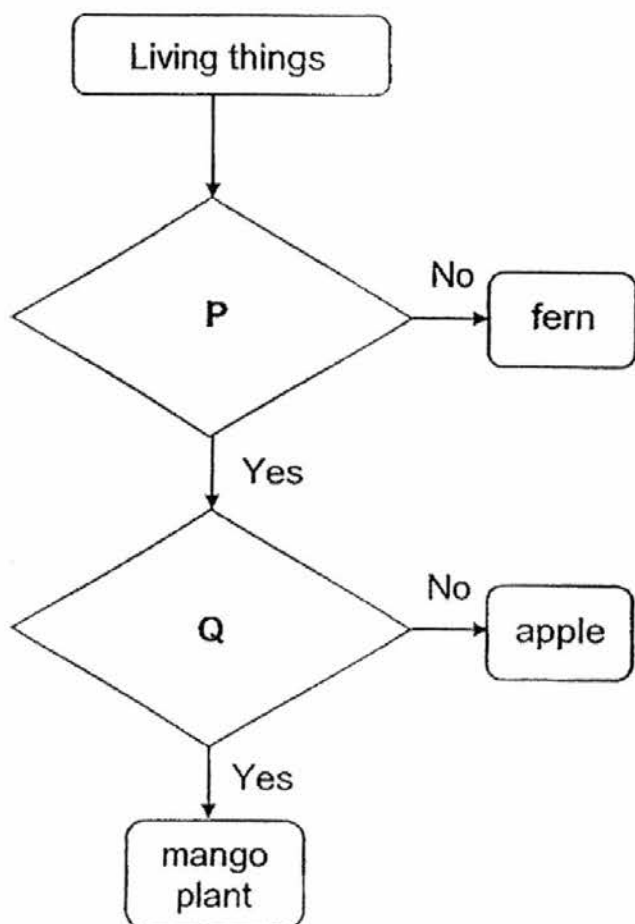
1. Which of the following statements shows the correct characteristics of living things shown in the diagram below?



A mimosa plant closing its leaves after being touched.

- (1) The mimosa plant can grow.
(2) The mimosa plant can reproduce.
(3) The mimosa plant can respond to changes.
(4) The mimosa plant needs air, water and food. ()

2. Study the flow chart below.



What are questions P and Q?

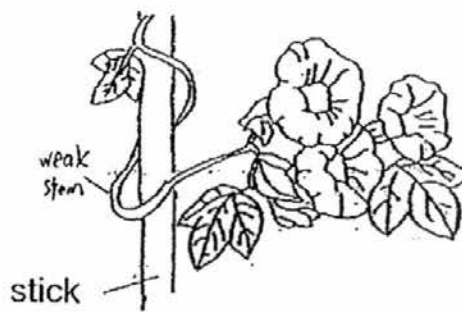
	P	Q
(1)	Does it make its own food?	Does it produce flowers?
(2)	Does it produce flowers?	Does it have seeds?
(3)	Does it make its own food?	Does it have few seeds?
(4)	Does it produce flowers?	Does it have only one seed?

()

3. The diagram below shows two different plants.



fern



morning glory

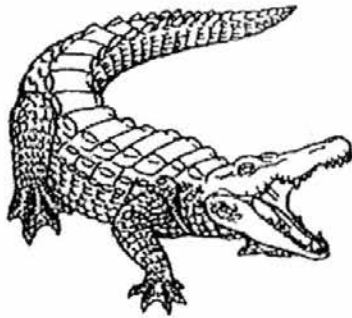
What do the two plants have in common?

- A : They have leaves.
- B : They have strong stems.
- C : They can produce flowers.
- D : They are grown from spores.

- (1) A only
- (2) C only
- (3) A and B
- (4) C and D

()

4. The diagram below shows two animals.



crocodile



salamander

Sandy made the statements below.

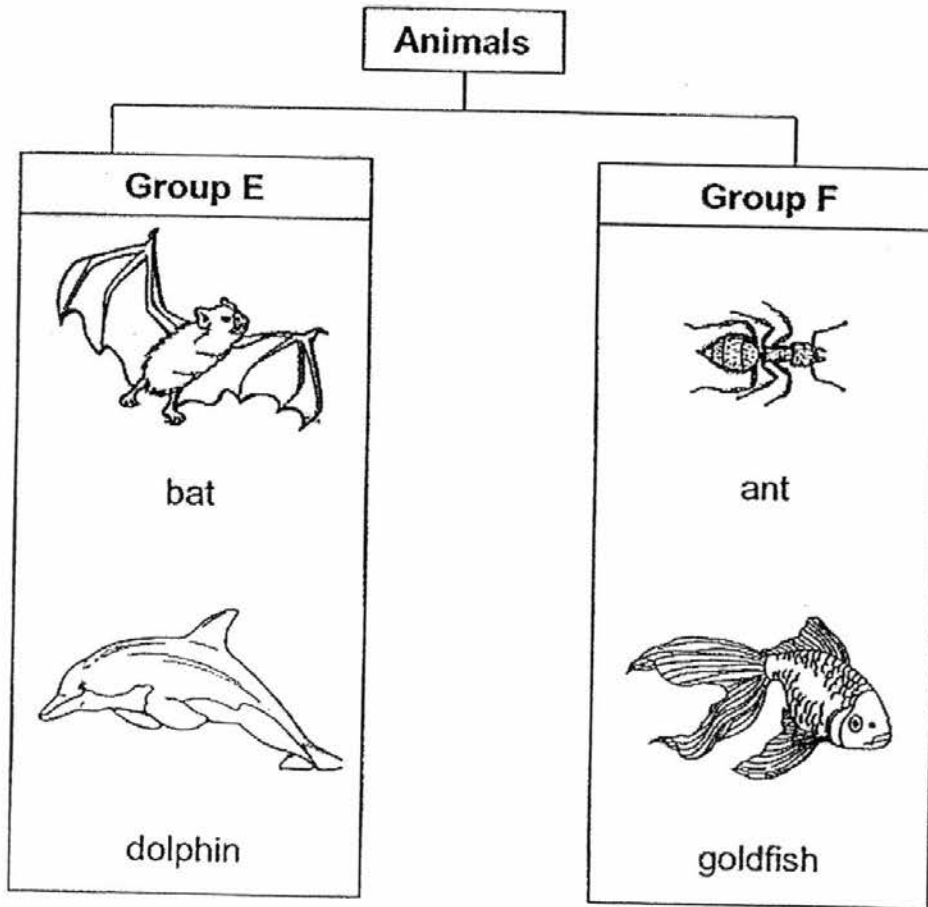
- A: Both have a tail.
- B: Both reproduce by laying eggs.
- C: Both have dry skin covered with scales.

Which of the following statements about the two animals is not correct?

- (1) C only
- (2) A and B
- (3) B and C
- (4) A, B and C

()

5. Study the table below.



The animals are grouped according to _____.

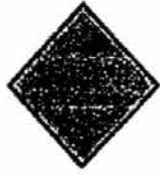

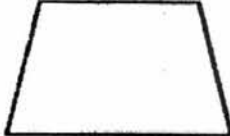
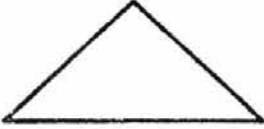
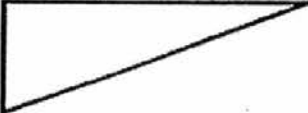

- (1) how they reproduce
- (2) how they move about
- (3) their outer body coverings
- (4) the number of legs they have ()

End of Section A

Section B (10 marks)

For questions 6 to 9, write your answers in the spaces provided.

6. The diagrams below show the classification of six different figures.

		
A	B	C
		
D	E	F

a) Claire classified the six figures into two groups as shown in the classification table below.

Group G	Group H
B C D E	A F

What are suitable headings for groups G and H? [1]

Group G: _____

Group H: _____

b) State another way in which she can classify the six figures. [1]

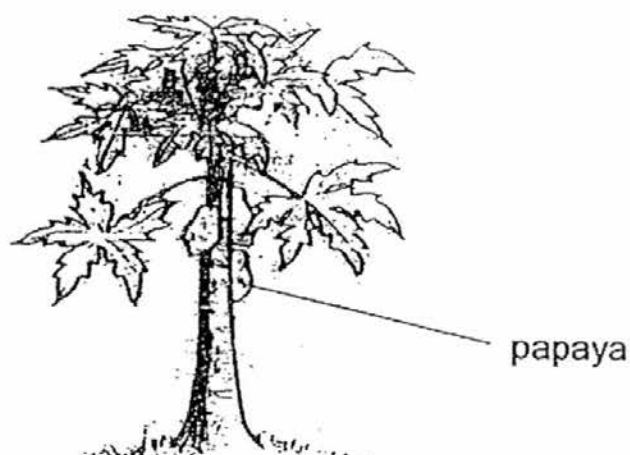
- 7 The table below shows the characteristics of three plants, plant K, plant L and plant M. A tick (✓) indicates that the characteristic is shown by the plant.

	plant K	plant L	plant M
Plant has flowers.	✓		✓
Plant has fruits that cannot be eaten.			✓
Plant reproduces by spores.		✓	
Plant has large leaves.	✓		✓

- a) Based on the above table, put a tick (✓) in the correct boxes to indicate if the statements below are 'True' or 'False' [2]

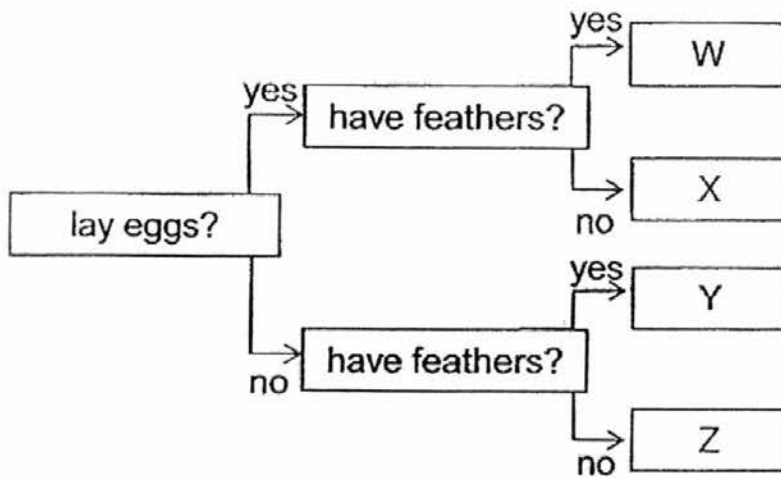
Statement	True	False
(i) Both plant K and plant L are flowering plants.		
(ii) Plant M has fruits.		
(iii) Plant L is a moss plant.		
(iv) Plant L does not have leaves		

- b) The diagram below shows the diagram of a plant.


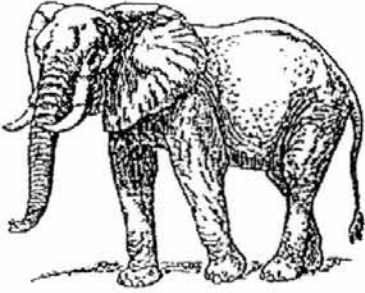


Which of the following plant, K, L or M, is this plant most likely to be? [1]

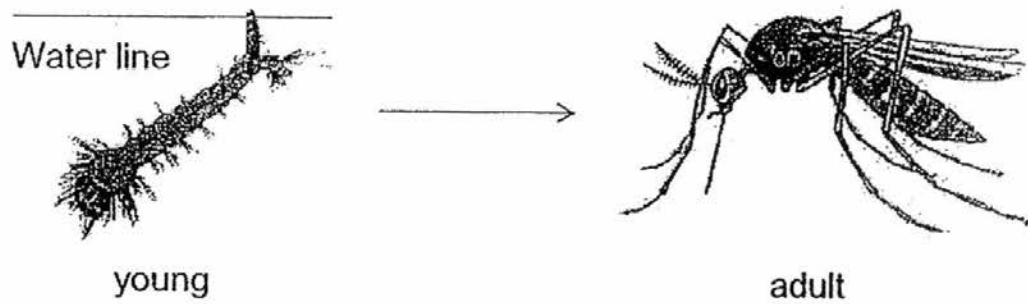
8. Animals W, X, Y and Z are classified as shown.



Fill in the boxes with the letters, W, X, Y or Z to match each of the following animals to the correct letter. [2]

Animal	Letter
a)  ostrich	
b)  elephant	

9. The diagram below shows what happened to the young of animal Z after a few weeks.



- a) Name a characteristic of living things that is shown in the diagram above. [1]

- b) The adult is classified as an insect.

Give **two** characteristics that show that the adult belongs to this group. [2]

Characteristic 1: _____

Characteristic 2: _____

End of Section B

EXAM PAPER 2016 (P3)

SCHOOL : PEI CHUN

SUBJECT : SCIENCE

TERM : CA1

Q1	Q2	Q3	Q4	Q5
3	4	1	1	1

6)a)G: All the objects in Group G is white / unshaded

H: All the objects n Group H is black / shaded

b)By the number of sides/ edges / lines

7)a)i)False ii)True iii)True iv)False

b)I think it is plant K.

8)a)W

b)Z

9)a)Living things can grow.

b)1)It has three body parts.

2)It has three pairs of legs.