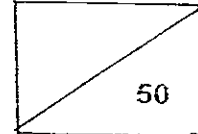


METHODIST GIRLS' SCHOOL (PRIMARY)  
CONTINUAL ASSESSMENT 1  
PRIMARY 3  
SCIENCE  
2008

NAME : \_\_\_\_\_ ( )

CLASS : Pr 3: \_\_\_\_\_



**SECTION A : (15 X 2 marks)**

Choose the most suitable answer and write its number in the brackets provided.

1. Animals move from place to place in order to \_\_\_\_\_

- (A) look for food
- (B) look for water
- (C) look for shelter
- (D) escape from danger

- (1) D only
- (2) A & B only
- (3) A, B & C only
- (4) All the above

( )

2. Which one of the following does not come from things that were once alive?

- (1) Silk dress
- (2) Plastic bag
- (3) Rubber boots
- (4) Leather wallet

( )

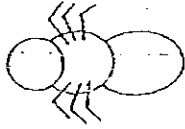
3. Which one of the following animals is classified incorrectly?

	Animals	Classifications of Animals
(1)	Kiwi	Bird
(2)	Penguin	Mammal
(3)	Eel	Fish
(4)	Dragonfly	Insect

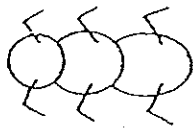
( )

4. Which one of the following shows the correct position of the insect's legs?

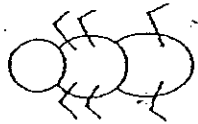
(1)



(2)



(3)

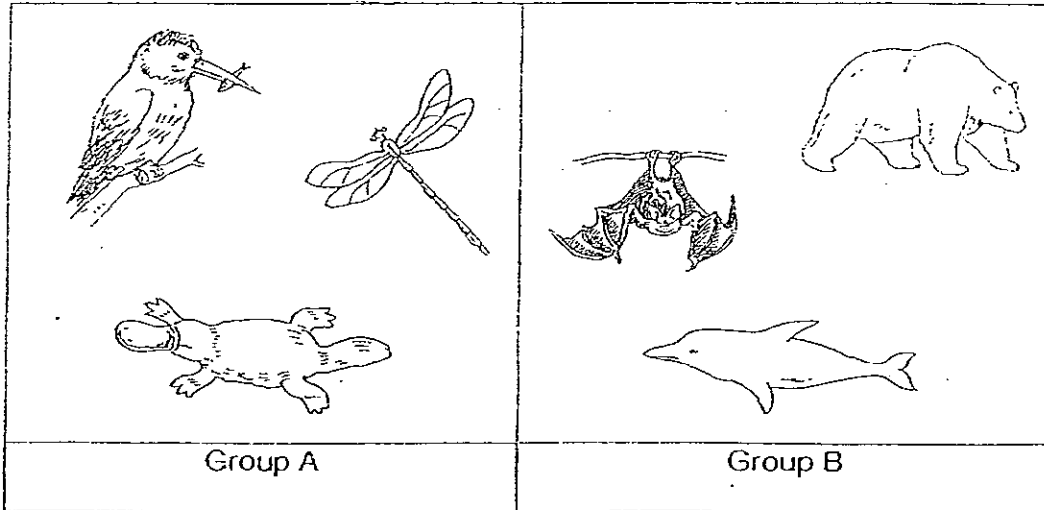


(4)



( )

5. Study the pictures below carefully.



The animals are grouped according to their \_\_\_\_\_.

- (1) eating habits
- (2) body coverings
- (3) habitats that they live in
- (4) methods of reproduction

(     )

6. Which one of the following groups of animals does not have any outer body covering?

- (1) Ladybird, Grasshopper and Dragonfly
- (2) Squid, Jellyfish and Earthworm
- (3) Guppy, Goldfish and Seahorse
- (4) Sparrow, Crow and Owl

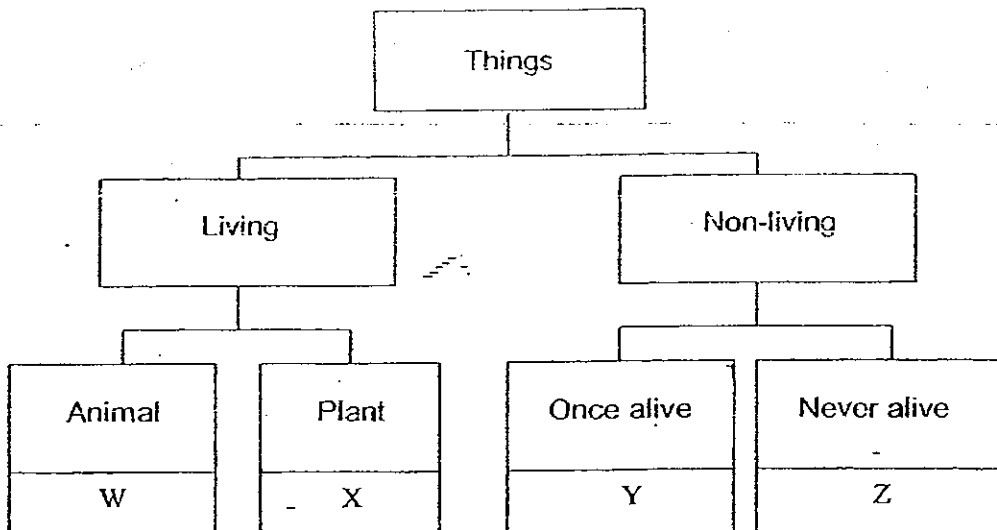
(     )

7. Which one of the following is **true**?

- (1) Non-flowering plants are not green.
- (2) All flowering plants have colourful flowers
- (3) Flowering plants have more leaves than non-flowering plants
- (4) Flowering plants produce flowers, which then develop into fruits that contain seeds

(     )

8. Study the classification chart below carefully.



Which one of the following has been classified wrongly?

	W	X	Y	Z
(1)	Snail	Moss	Eraser	Porcelain bowl
(2)	Squirrel	Rose	Roast duck	Computer
(3)	Kangaroo	Hibiscus	Wooden ruler	Woollen coat
(4)	Butterfly	Conifers	Feather duster	Metal spoon

( )

9. Which one of the following are characteristics of an insect?

- (1) Head, thorax, wings, legs
- (2) Head, abdomen, legs, wings
- (3) Head, thorax, abdomen, legs
- (4) Head, thorax, abdomen, wings

( )

10. Ferns and mosses are examples of plants that \_\_\_\_\_.

- (1) produce flowers
- (2) do not produce flowers
- (3) do not produce leaves
- (4) produce poisonous smell

11. The table below shows the characteristics of ~~five~~ animals A, B, C and D.

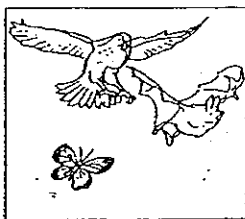
Animal	Number of legs		Has wings	Covered with hair/fur	Feed their young with milk
	2	4			
A	√		√		
B	√		√	√	√
C	√			√	√
D		√	-	√	√

The bat is most likely to be Animal \_\_\_\_\_.

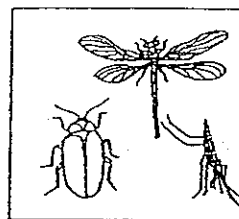
- (1) A
- (2) B
- (3) C
- (4) D

( )

12. Look at the pictures below carefully.



Group P.



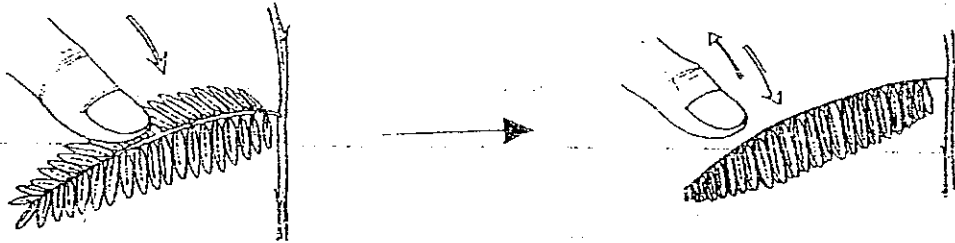
Group Q

The animals in Groups P and Q are similar as they \_\_\_\_\_.

- (1) can fly
- (2) lay eggs
- (3) are colourful
- (4) have only one pair of wings

( )

13. Which one of the characteristic of living things does the picture below show?



- (1) Living things die  
 (2) Living things grow  
 (3) Living things reproduce  
 (4) Living things respond to changes

( )

14. Animal X was put in a tank together with some leaves, minced meat and water. Every day the amount of leaves and the amount of minced meat left in the tank were recorded in the table below.

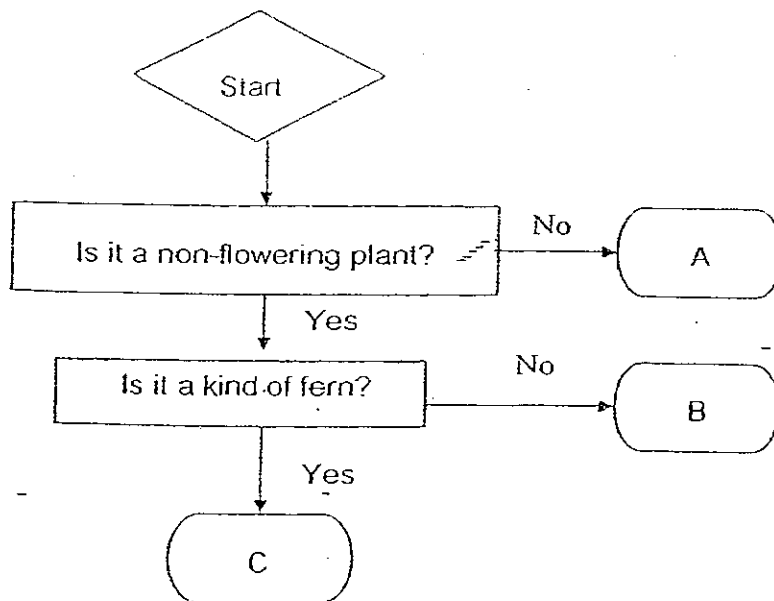
	Amount of leaves	Amount of minced meat
Beginning	70g	70g
After 1 day	60g	70g
After 2 days	52g	70g
After 3 days	44g	70g

Animal X is likely to be a \_\_\_\_\_.

- (1) Rat  
 (2) Frog  
 (3) Spider  
 (4) Caterpillar

( )

15. Study the flow chart below carefully.



Which of the following correctly represents A, B and C?

	A	B	C
(1)	Lantana	Bird's nest fern	Mosses
(2)	Maiden hair fern	Coconut palms	Sword fern
(3)	Rafflesia	Pine	Staghorn fern
(4)	Water spangle	Ixora	Mosquito fern

( )

SECTION B : (20 marks)

Write the correct answers in the spaces provided. Marks will be deducted for key words that have been mis-spelt.

16. Three pupils made the following statements about mammals.

- Adeline : All mammals feed their young with milk
- Bernice : All mammals have hair or fur on their bodies
- Claire : All mammals give birth to their young alive
- Dale : All mammals live on land

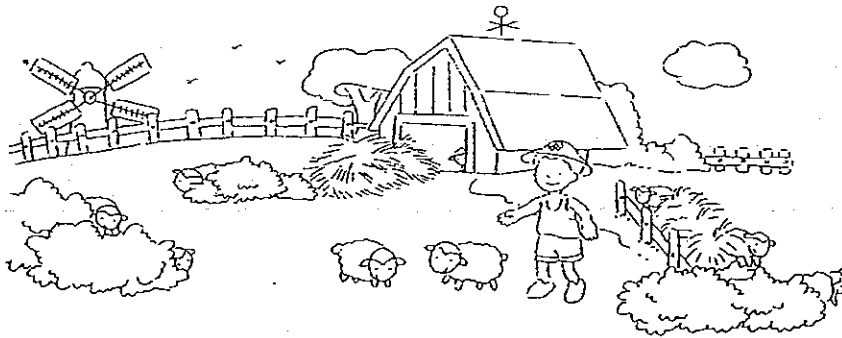
(a) Which 2 pupils made the wrong statements about mammals?

\_\_\_\_\_ [1]

(b) Explain why each of their statements are incorrect. Support your answer with an example each.

\_\_\_\_\_  
\_\_\_\_\_  
\_\_\_\_\_ [2]

17. Study the picture below.

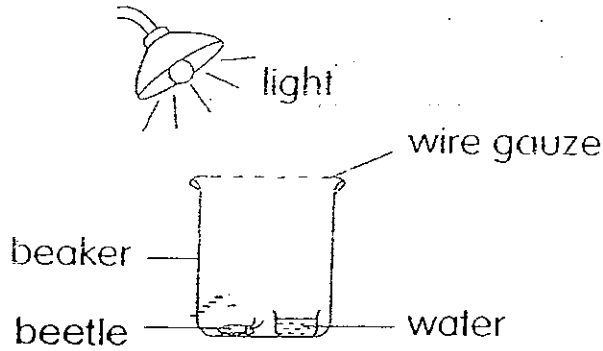


Write down 2 living things and 2 non-living things that you can see and list them in the table below. [2]

	Living things	Non-living things
(1)		(1)
(2)		(2)



18. Jacob set up the following experiment.



After 1 week, he noticed that the beetle has died:

(a) Why did the beetle die?

\_\_\_\_\_ [1]

(b) What can we say about what living things need to survive?

\_\_\_\_\_ [1]

19. The table below shows the characteristics of four animals, A, B, C and D.

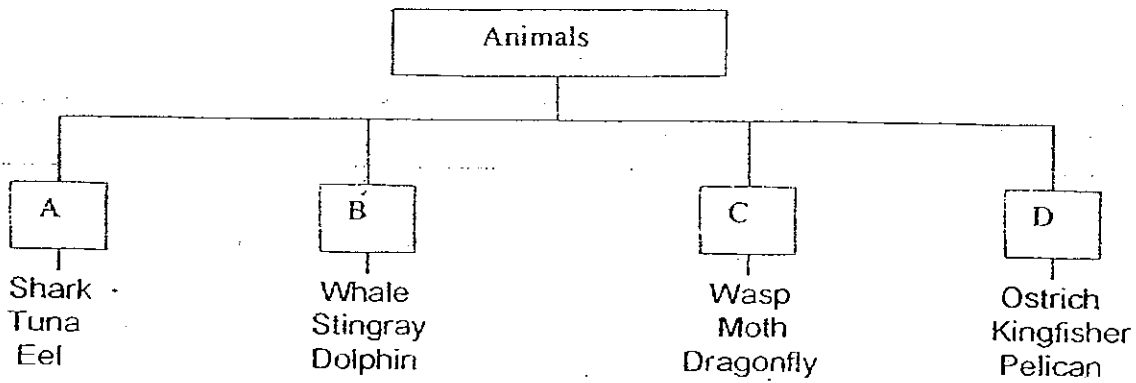
Animal	Number of legs				Wings	Feelers
	0	2	4	6		
A	√					
B			√		√	
C			√			
D				√	√	√

Put a tick (√) in the correct box for the following statements.

	Statement	True	False	Not possible to tell
(a)	Animal A is likely to be a fish.			
(b)	Animal B is likely to be a bird.			
(c)	Animal C is likely to be a mammal			
(d)	Animal D is likely to be an insect			

[4]

20. In the classification chart below, Judy has classified 12 animals.



a) One animal in the chart has been classified wrongly. Name the animal.

---

[1]

b) In which group (A, B, C or D) should this animal be classified?

---

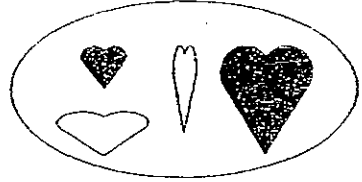
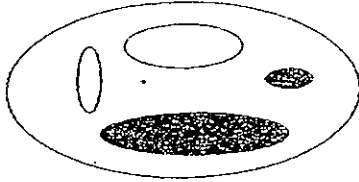
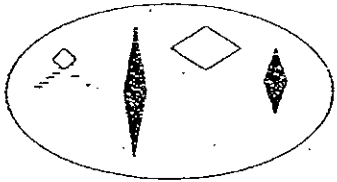
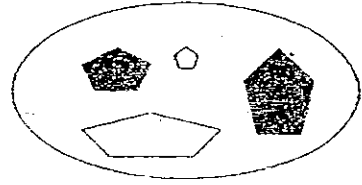
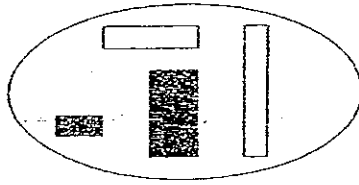
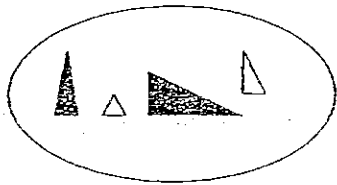
[1]

c) The spider cannot be placed in any of the groups above. Why?

---

[1]

21. Study the pictures below carefully.



a) How are the above objects grouped?

\_\_\_\_\_ [1]

b) Name one other way in which the objects can be regrouped.

\_\_\_\_\_ [1]

22. (a) is a seed a living thing? Give one reason.

\_\_\_\_\_ [2]

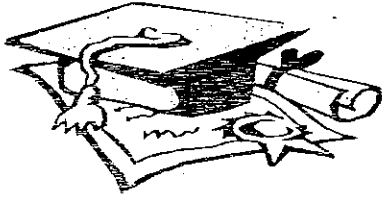
(b) What can you do to prove your answer in (a) above?

\_\_\_\_\_  
\_\_\_\_\_ [1]

(c) Name another way some plants can reproduce other than through seeds.

\_\_\_\_\_ [1]

----- END OF PAPER -----



# ANSWER SHEET

EXAM PAPER 2008

SCHOOL : MGS PRIMARY SCHOOL  
SUBJECT : PRIMARY 3 SCIENCE

TERM : CA 1

Q1	Q2	Q3	Q4	Q5	Q6	Q7	Q8	Q9	Q10	Q11	Q12	Q13	Q14	Q15
4	2	2	1	4	2	4	3	3	2	2	1	4	4	3

- 16) a) Claire and Dale made the wrong statement.  
b) 1) Platypus lay eggs but it is still a mammal.  
2) Mammals like whales and dolphins live in water.

- 17) 1) Sheep - 1) Barn  
2) Boy 2) windmill

- 18) a) It was because the beetle needed food.  
b) Living things need air, food and water to survive.

- 19) a) T b) F c) Not d) T

- 20) a) The stingray has been classified wrongly.  
b) The stingray should be in group A.  
c) It is because it is not a bird, insect fish or a mammal.

- 21) a) The objects are grouped in shapes.  
b) The objects can be grouped by colour.

- 22) a) Yes, it can grow into a new plant.  
b) Grow the seeds in the soil and water them.  
c) Another way is by spores.