



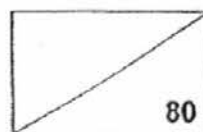
Rosyth School

First Semestral Assessment 2016

Mathematics

Primary 3

Name : \_\_\_\_\_



Class : Pr 3 - Register No. : \_\_\_\_\_ Duration : 1 hr 45 min

Date : 10 May 2016 Parent's Signature : \_\_\_\_\_

Instructions to Pupils:

1. Do not open this booklet until you are told to do so.
2. Follow all instructions carefully.
3. This paper consists of 3 parts – Sections A, B and C.
4. For questions 1 to 15 in Section A, shade the correct ovals on the Optical Answer Sheet (OAS).
5. ANSWER ALL THE QUESTIONS.

	Maximum Marks	Marks Obtained
Section A	25	
Section B	35	
Section C	20	
Total	80	

This paper consists of 18 printed pages altogether, including the cover page.

**Section A (25 marks)**

Questions 1 to 5 carry 1 mark each. Questions 6 to 15 carry 2 marks each.  
For questions 1 to 15, four options are given. One of them is the correct answer.  
Make your choice (1, 2, 3 or 4). Shade the correct oval (1, 2, 3 or 4) on the Optical Answer Sheet (OAS) provided.

---

1. In 9456, the digit 4 stands for \_\_\_\_\_.

- (1) 40
- (2) 400
- (3) 4000
- (4) 4

2. Find the product of 6 and 9.

- (1) 15
- (2) 45
- (3) 3
- (4) 54

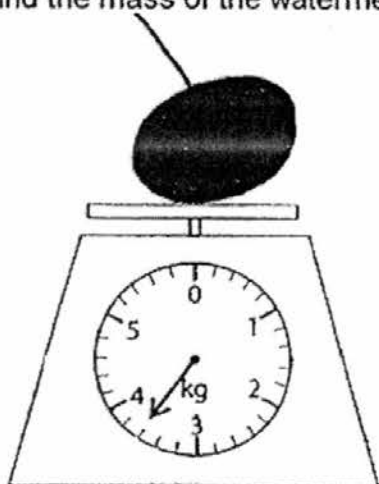
3. What is the quotient of 192 and 8?

- (1) 24
- (2) 184
- (3) 200
- (4) 1536

4. The height of a door is about \_\_\_\_\_.

- (1) 1 m
- (2) 2 m
- (3) 10 cm
- (4) 20 cm

5. Find the mass of the watermelon.



- (1) 3 kg 30 g
- (2) 3 kg 300 g
- (3) 3 kg 60 g
- (4) 3 kg 600 g

6. \_\_\_\_\_ is 10 more than 3991.

- (1) 3981
- (2) 4001
- (3) 4091
- (4) 4991

7. 8 tens + 7 hundreds = \_\_\_\_\_.
- (1) 708
  - (2) 780
  - (3) 807
  - (4) 870
8. Find the difference between 5300 and 243.
- (1) 5057
  - (2) 5067
  - (3) 5143
  - (4) 5543
9. The sum of two numbers is 4280. The greater number is 2279.  
Find the smaller number.
- (1) 2001
  - (2) 2019
  - (3) 6459
  - (4) 6559
10. Tricia had \$7. Her brother had 6 times as much as her. How much do they have altogether?
- (1) \$1
  - (2) \$13
  - (3) \$42
  - (4) \$49

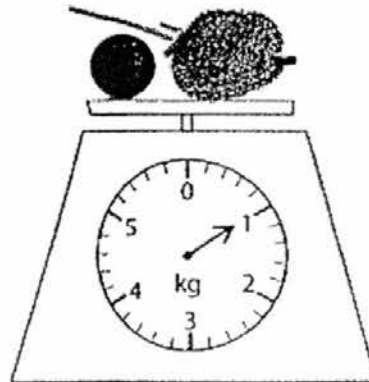
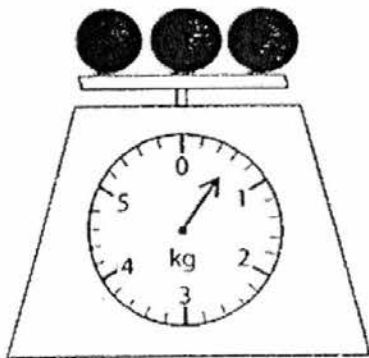
11. Ahmad collected 56 stamps. He collected 7 times as many stamps as Sandra. How many stamps did Sandra have?
- (1) 7
  - (2) 8
  - (3) 49
  - (4) 392
12. Yi Kai has 8 boxes of donuts. There are 9 donuts in each box. He gave away 15 donuts. How many donuts has he left?
- (1) 17
  - (2) 2
  - (3) 57
  - (4) 72
13. There are 72 children at a party. Mrs Tan gave 6 sweets to each child and had 4 sweets left. How many sweets did Mrs Tan have at first?
- (1) 12
  - (2) 16
  - (3) 428
  - (4) 436

14. James ran 1540 m. Eric ran 490 m less than him.

How far did the two boys run altogether?

- (1) 1050 m
- (2) 2030 m
- (3) 2590 m
- (4) 3570 m

15. Amy placed some identical balls and a durian on the weighing scales as shown in the diagrams below. Find the mass of the durian.



- (1) 200 g
- (2) 400 g
- (3) 600 g
- (4) 800 g

**Section B (35 marks)**

Do not write  
in this space

Questions 16 to 20 carry 1 mark each. Questions 21 to 35 carry 2 marks each. Show your working clearly in the space below each question and write your answer in the answer boxes provided. Give your answers in the units stated.

---

16.  $3468 + 2152 =$  \_\_\_\_\_

Answer: \_\_\_\_\_

17. What is the value of  $600 \times 9$ ?

Answer: \_\_\_\_\_

18. Express 4 kg 32 g in grams.

Answer: \_\_\_\_\_ g

19. Express 5396 ml in litres and millilitres.

Do not write  
in this space

Answer: \_\_\_\_\_ ml

20. 3 km 90 m = \_\_\_\_\_ m

Answer: \_\_\_\_\_ m

21. What is the missing number in the box?

841, 941, , 1141, 1241

Answer: \_\_\_\_\_



22. 100 less than 8 thousands is \_\_\_\_\_.

Do not write  
in this space

Answer: \_\_\_\_\_

23. The greatest even number that can be formed with all the digits  
4, 9, 6 and 3 is \_\_\_\_\_.

Answer: \_\_\_\_\_

24. 54 more than 67 hundreds is \_\_\_\_\_.

Answer: \_\_\_\_\_

25. What must be added to 409 to make 1 000?

Do not write  
in this space

Answer: \_\_\_\_\_

---

26. Find the difference between 5381 and 493.

Answer: \_\_\_\_\_

---

27. Find the product of 320 and 3.

Answer: \_\_\_\_\_

28. Find the value of  $630 \div 7$ .

Do not write  
in this space

Answer: \_\_\_\_\_

---

29.  $9 \times \boxed{?} = 639$

Find the missing number in the box.

Answer: \_\_\_\_\_

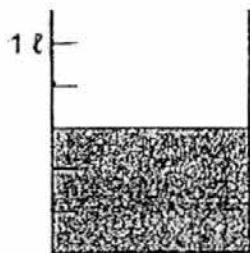
---

30. Find the quotient and remainder when 386 is divided by 8.

Quotient: \_\_\_\_\_

Remainder: \_\_\_\_\_

31. The diagram below shows the amount of water in a beaker.



What is the volume of the water in the beaker?

Answer: \_\_\_\_\_ ml

Do not write  
in this space

32. Peter and Sam have a total of 195 picture cards.  
Sam has 4 times as many picture cards as Peter.  
How many picture cards does Peter have?

Answer: \_\_\_\_\_

Do not write  
in this space

33. A fruit seller had 562 oranges.  
He threw away 18 rotten oranges and packed the rest into equal packs of 8.  
How many packs would he have?

Answer: \_\_\_\_\_

34. Eric has 72 erasers.  
He has 8 times as many erasers as Jane.  
How many erasers do they have altogether?

Answer: \_\_\_\_\_

35. The mass of a box and a packet of sweets is 1380 g.  
The mass of the same box and 2 similar packets of sweets is 2040 g.  
What is the mass of 1 packet of sweets?

Answer: \_\_\_\_\_ g

**Section C (20 marks)**

Do not write  
in this space

For questions 36 to 40, show your working and statements clearly in the space below each question and write your answers in the blanks provided. The marks for each question or part question are given in the brackets. Show your units clearly.

---

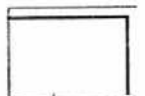
36. Mr Lim has 8 boxes of pens. There are 98 pens in each box.

He wants to put them into packs of 6.

- (a) How many packs of pens would he have?
- (b) How many pens would be left unpacked?

Answer: (a) \_\_\_\_\_ [3]

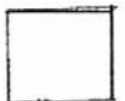
(b) \_\_\_\_\_ [1]



37. Mrs Tay sold 1285 apples on Monday.  
She sold 478 more apples on Tuesday than on Monday.  
She sold 329 fewer apples on Wednesday than on Tuesday.  
How many apples did she sell on Wednesday?

Do not write  
in this space

Answer: \_\_\_\_\_ [4]



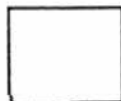
38. Jerry bought 4 packets of biscuits.

Katrine bought 2 times as many packets of biscuits as Jerry.

If each packet costs \$8, how much did Katrine spend on the biscuits?

Do not write  
in this space

Answer: \_\_\_\_\_ [4]





39. Adrian has \$784.  
He has 4 times as much as Billy.  
Billy has \$24 less than Cayden.  
How much money does Cayden have?

Do not write  
in this space

Answer: \_\_\_\_\_ [4]



40. Mdm Lim mixed some lemon juice with 3 times as much water to make some lemonade. She then poured the lemonade equally into 3 cups.

Each cup contained 280 ml of lemonade.

How much lemon juice did she use?

Do not write  
in this space

Answer: \_\_\_\_\_ [4]

**End of Paper**

EXAM PAPER 2016 (P3)

SCHOOL : ROSYTH

SUBJECT : MATHEMATICS

TERM : SA1

Q1	Q2	Q3	Q4	Q5	Q6	Q7	Q8	Q9	Q10
2	4	1	2	4	2	2	1	1	4
Q11	Q12	Q13	Q14	Q15					
2	3	4	3	4					

16)5629

17)5400

18)4032

19)5L 396ml

20)3090m

21)1041

22)7900

23)9634

24)6754

25) $1000 - 409 = 591$

26) $5381 - 493 = 4888$

27) $320 \times 3 = 960$

28) $630 \div 7 = 90$

29) $639 \div 9 = 71$

30) $386 \div 8 = 48 \text{ R } 2$

31)600ml

32) $195 \div 5 = 39$

33)  $562 - 18 = 544$

$544 \div 8 = 68$

34)  $72 \div 8 = 9$

$72 + 9 = 81$

35)  $2040 - 1380 = 660\text{g}$

36)a) total no. of pens =  $8 \times 98 = 784$

No. of books =  $784 \div 6 = 130 \text{ R}4$

There would be 130 packs.

b) There were 4 pens unpacked

37)  $1285 + 478 = 1763$

$1763 - 329 = 1434$

She sold 1434 apples on Wednesday.

38)  $4 \times 2 = 8$

$8 \times 8 = \$64$

Katrine spent \$64 on the biscuits.

39)  $784 \div 4 = 196$

$196 + 24 = \$220$

Cayden has \$220

40)  $3 \times 280\text{ml} = 840\text{ml}$

$840\text{ml} \div 4 = 210\text{ml}$

She used 210ml of lemon juice.