



Rosyth School
Second Topical Test for 2013
SCIENCE
Primary 4

Name: _____

Total
Marks:

30

Class: Pr 4 _____

Register No. _____

Duration: 30 minutes

Date: 29 August 2013

Parent's Signature: _____

Instructions to Pupils:

1. Do not open the booklet until you are told to do so.
2. Follow all instructions carefully.
3. This paper consists of 2 parts, Part I and Part II.
4. For questions 1 to 10, write the correct answer in the brackets provided.
5. For questions 11 and 12, give your answers in the spaces provided in Part II.

	Maximum	Marks Obtained
Part I	10 marks	
Part II	5 marks	
Total	15 marks	

* This booklet consists of 8 pages.

This paper is not to be reproduced in part or whole without the permission of the Principal.

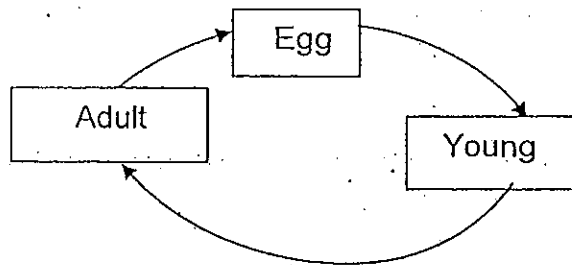
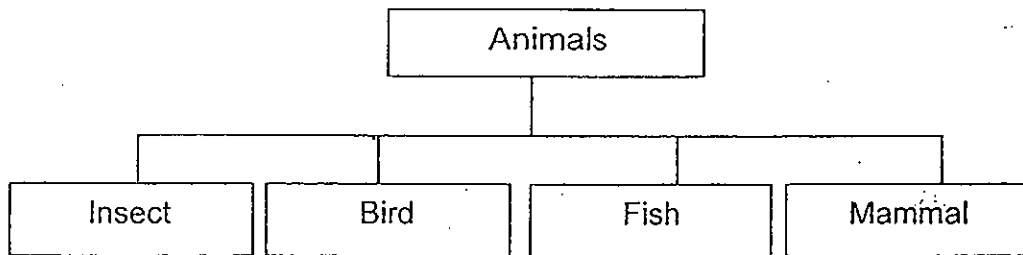
Practical Test

	Maximum	Marks Obtained
Total	15 marks	

Part I (10 MARKS)

For questions 1 to 10, four options are given. Make your choice (1, 2, 3 or 4) and write your answer in the bracket provided.

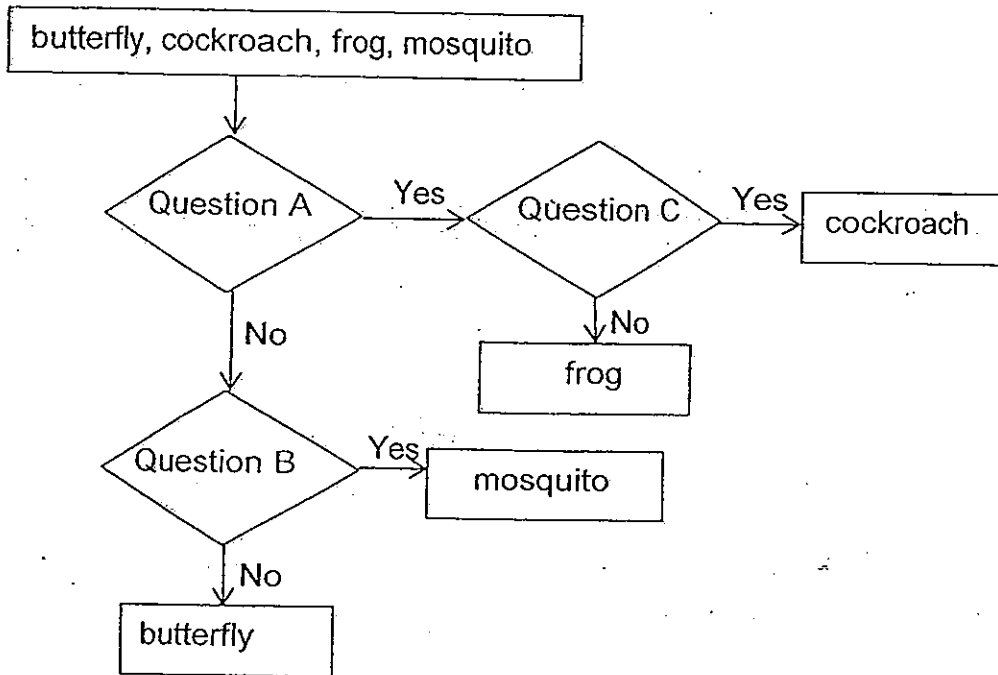
1 The table below shows the classification of animals.



Which group has some animals which may not have a similar life cycle as shown above?

- | | | |
|------------|------------|-----|
| (1) Bird | (2) Fish | |
| (3) Mammal | (4) Insect | () |

2 Ian classifies some organisms using the chart below.



What are the questions for A, B and C?

	Question A	Question B	Question C
(1)	Are there 3 stages in the life cycle?	Does the young look like the adult?	Is part of its life cycle spent in water?
(2)	Are there 3 stages in the life cycle?	Is part of its life cycle spent in water?	Does the young look like the adult?
(3)	Is part of its life cycle spent in water?	Does the young look like the adult?	Are there 3 stages in the life cycle?
(4)	Does the young look like the adult?	Are there 3 stages in the life cycle?	Is part of its life cycle spent in water?

()

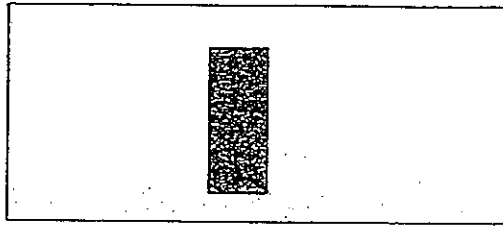
3 Tim wanted to find out if the type of soil affects the growth of a plant. Which of the following variables should be kept the same for the above experiment?

- A: Amount of water
- B: Amount of soil
- C: Amount of sunlight

- (1) A and B only
- (2) A and C only
- (3) B and C only
- (4) A, B and C

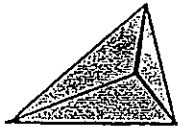
()

- 4 The diagram below shows the shadow formed on a screen by an object when a lamp is shone on it.

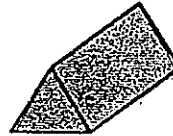


Which one of the following could not be the object?

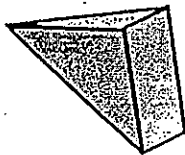
(1)



(2)



(3)

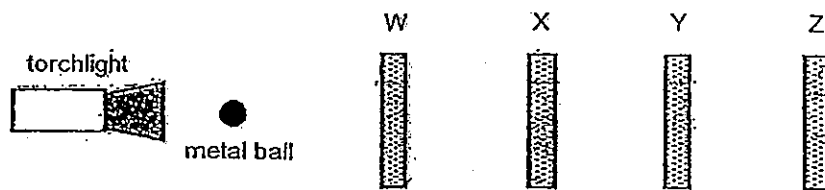


(4)



()

- 5 Leela conducted an experiment to investigate if light could pass through 4 sheets W, X, Y and Z which are made of different materials. When the torch was turned on, the shadow of the metal ball was cast on sheet Y.

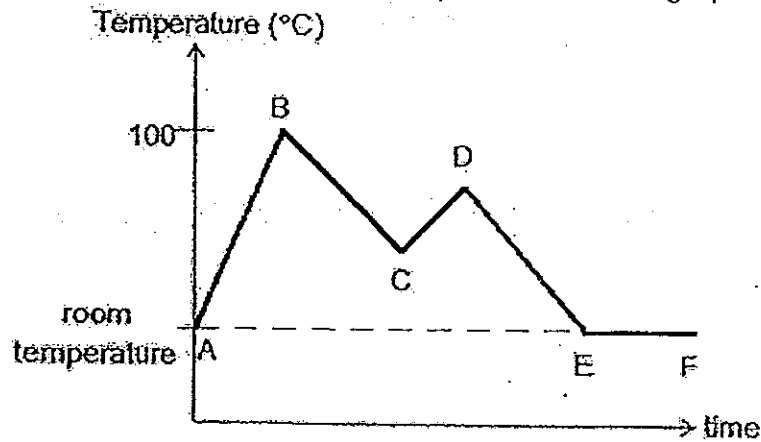


Which one of the following best describes the degree of transparency of sheets W, X, Y and Z?

	W	X	Y	Z
(1)	not possible to tell if opaque or not	transparent	opaque	opaque
(2)	transparent	opaque	not possible to tell if opaque or not	opaque
(3)	opaque	not possible to tell if opaque or not	transparent	transparent
(4)	transparent	transparent	opaque	not possible to tell if opaque or not

()

- 6 Lele conducted an experiment by repeatedly heating and cooling a beaker of tap water. She recorded the changes in temperature on the graph below.



Which parts of the graph show heat gain and loss during the experiment?

	Heat loss	Heat gain
(1)	BC, CD, EF	AB, DE
(2)	BC, DE	AB, CD
(3)	BC, DE,	AB, CD,EF
(4)	CD, EF	AB, DE

()

- 7 When a few ice cubes are added to a glass of hot coffee, which of the following will happen within 5 minutes?

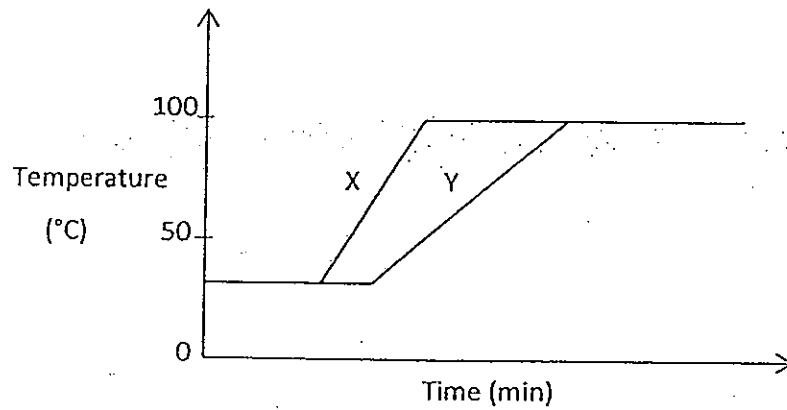
- A: The ice cubes gain heat.
- B: The hot coffee loses heat.
- C: The ice cubes melt in the hot coffee.
- D: The ice cube loses heat to the surrounding air.

- (1) A and B only
- (3) A, B and C only

- (2) C and D only
- (4) A, B, C and D

()

- 10 The graph below shows how the temperature of two beakers of water, X and Y, changes over time. X and Y were heated over similar flames.



Study the graph above carefully. Which one of the following statements interpret the graph correctly?

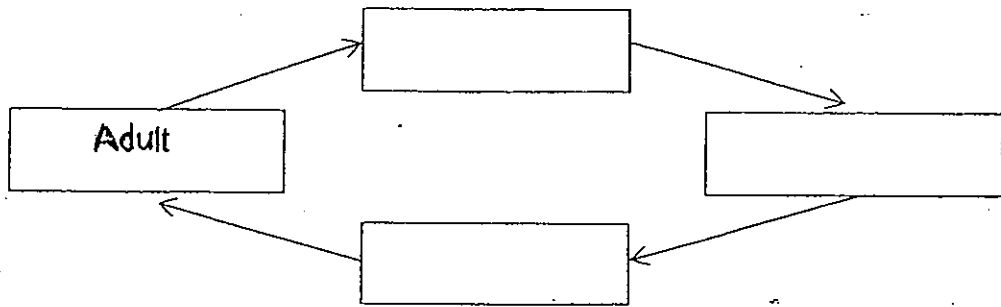
- (1) Both beakers of water boiled at the same time.
- (2) Beaker Y contained more water than Beaker X.
- (3) Beaker X is a poorer conductor of heat than Beaker Y.
- (4) The water in Beaker X was at a higher temperature than the water in Beaker Y before heating.

()

PART II (5 MARKS)

For questions 11 and 12, write your answers in the space provided.

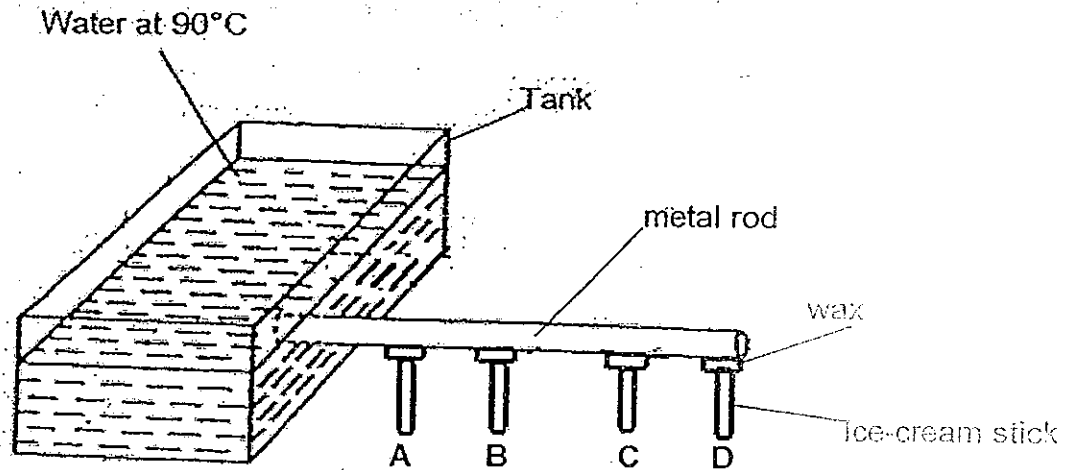
11 The diagram below shows the life cycle of Aedes Mosquito.



(a) Fill in the boxes with the correct stages of its life cycle. [1]

(b) What would you do to reduce the number of mosquitoes? Explain why. [2]

- 12 Zul set up an experiment as shown in the diagram below. One end of a metal rod passes through a tank of water heated to a temperature of 90°C . Four wooden ice-cream sticks, A, B, C, D were held in place on the rod by wax. He observed that the ice cream sticks dropped in the order of A,B,C then D.



- (a) State the property of heat shown in the above experimental set-up. [1]

- (b) Why did Zul use a rod made of metal in the set-up? [1]

End of Paper



ANSWER SHEET

EXAM PAPER 2013

SCHOOL : ROSYTH SCHOOL

SUBJECT : PRIMARY 4 SCIENCE

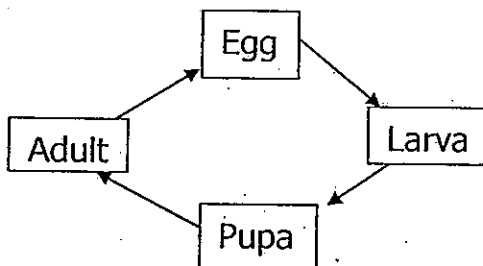
TERM : CA2

Q1	Q2	Q3	Q4	Q5	Q6	Q7	Q8	Q9	Q10
4	2	4	1	4	2	3	1	2	2

Part II

Q11

a)



b) During the larva or the pupa stage, I will pour a thin layer of oil. The pupa and the larva stage breathe through breathing tubes and the layer of oil will block their breathing tubes. The larva or pupa will die as they have no air.

Q12

a) Heat travels from hotter region to a cold region.

b) Metal is a good conductor of heat and the heat can travel easily from the water to the rod.

