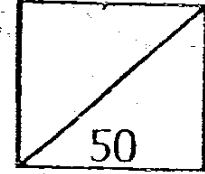




**Rosyth School**  
**First Continual Assessment for 2007**  
**SCIENCE**  
**Primary 5**



Name: \_\_\_\_\_

Total  
Marks:

Class: Pr. \_\_\_\_\_

Register No. \_\_\_\_\_

Duration: 1 h 15 min

Date: 28 Feb 2007

Parent's Signature: \_\_\_\_\_

Instructions to Pupils:

1. Do not open the booklet until you are told to do so.
2. Follow all instructions carefully.
3. This paper consists of 2 sections, Section A and Section B.
4. For questions 1 to 15, shade the correct ovals on the Optical Answer Sheet (OAS) provided using a 2B pencil.
5. For questions 16 to 23, give your answers in the spaces provided in Section B.

	Maximum	Marks Obtained
Section A	30 marks	
Section B	20 marks	
Total	50 marks	

\* This booklet consists of 13 pages . (pg. 1 to 13 )

This paper is not to be reproduced in part or whole without the permission of the Principal.

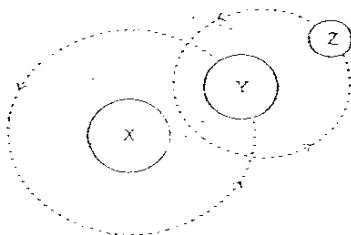
**SECTION A ( 30 MARKS)**

For each question from 1 to 15, four options are given. One of them is the correct answer. Make your choice (1, 2, 3 or 4). Shade the correct oval (1, 2, 3 or 4) on the Optical Answer Sheet.

1. Which object in space is nearest to Earth?

- (1) Sun (2) Mars  
 (3) Venus (4) Moon

2. In the diagram shown below, X, Y and Z represent three objects that are found in space. Y is revolving round X and Z is revolving round Y.



What can X, Y and Z be?

	X	Y	Z
(1)	Earth	Moon	Sun
(2)	Moon	Sun	Earth
(3)	Sun	Earth	Moon
(4)	Sun	Moon	Earth

3. In what way(s) is/are a weather satellite, a telecommunication satellite and the Moon alike?

- A: All of them are round.  
 B: All of them are useful to Man.  
 C: All of them move round the Earth.

- (1) A only (2) C only  
 (3) B and C only (4) A, B and C

( Go on to the next page)

Study the table of information given below and answer questions 4 and 5.

Object	Diameter (km)	Distance from the Sun (million km)	Time taken to move round the Sun once
Mercury	4 827	58	88 days
Venus	12 229	108	225 days
Jupiter	142 718	778	12 years
Neptune	4 9075	4500	165 years

4. What conclusion can be made about the objects given in the table?
- A: The bigger the object, the longer will be the time taken for it to move round the Sun.  
 B: The further the object is from the Sun, the longer will be the time taken for it to move round the Sun.  
 C: Among the four objects, the Sun will appear the largest from Mercury.
- (1) A and B only  
 (2) A and C only  
 (3) B and C only  
 (4) A, B and C
5. From this table of information, we can predict that Earth is further away from the Sun than which other planet(s)?
- A: Mercury  
 B: Venus  
 C: Jupiter  
 D: Neptune
- (1) A only  
 (2) A and B only  
 (3) B and C only  
 (4) A, B, C and D
6. Which of the following statements about cells are true?
- A: All cells are the building blocks of life.  
 B: Cells cannot be seen by the naked eye.  
 C: All cells are made up of a cell membrane, cytoplasm, nucleus and cell wall.  
 D: Living things can be made up of only one cell or many cells.
- (1) A and B only  
 (2) C and D only  
 (3) A, B and D only  
 (4) A, B, C and D

( Go on to the next page) 2

7. Study the table below carefully.

P	Q
Eel	Bacteria
Spider	Yeast

Which one of the following correctly represents the headings P and Q?

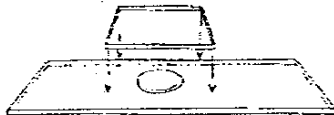
	P	Q
(1)	Living things	Non-living things
(2)	Animal cells	Plant cells
(3)	Multi-cellular organisms	Uni-cellular organisms
(4)	Binary Fission	Budding

8. Which one of the following actions must you do first before mounting a slide onto a microscope?

- (1) Place the slide on the stage.
- (2) Look through the eyepiece.
- (3) Turn the correct objective lens over the slide.
- (4) Turn the focus knob to lower the stage.

9. The pictures below show a cover slip being lowered onto a microscope slide. Which method will prevent air bubbles and excess water along the cover slip edges?

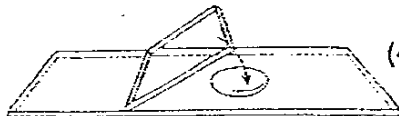
(1)



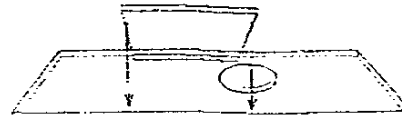
(2)



(3)



(4)

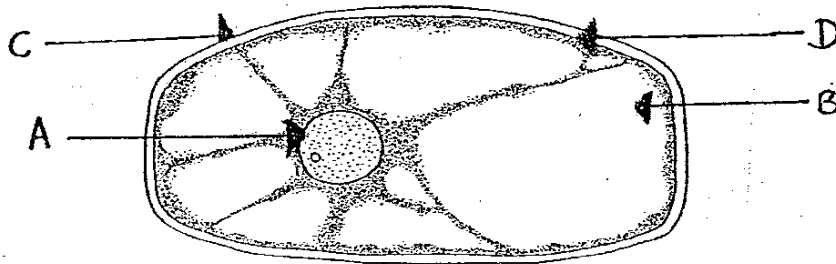


3

( Go on to the next page)

10. Which of the following statements about the nucleus is not true?
- (1) The information it contains is duplicated for transmission when the cell divides.
  - (2) The information contains in the nucleus varies from tissue to tissue.
  - (3) The cell cannot function properly once the nucleus is removed.
  - (4) Some cells may have more than one nucleus.

11. Look at the plant cell below carefully.



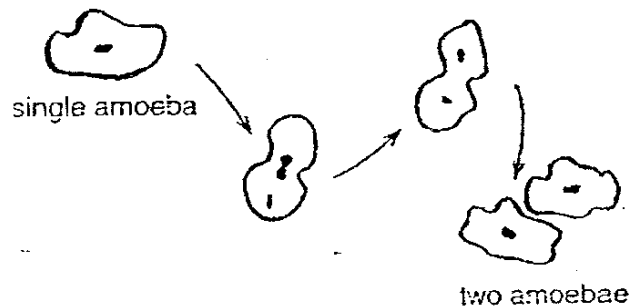
A plant cell

Which part of the cell supports and protects the cell while giving it the required shape?

- (1) A
  - (2) B
  - (3) C
  - (4) D
12. In which part of a cell are the instructions for the traits of an organism found?
- (1) Nucleus
  - (2) Cell wall
  - (3) Cytoplasm
  - (4) Cell membrane

( Go on to the next page)

13. The diagram below illustrates a method of reproduction known as binary fission .

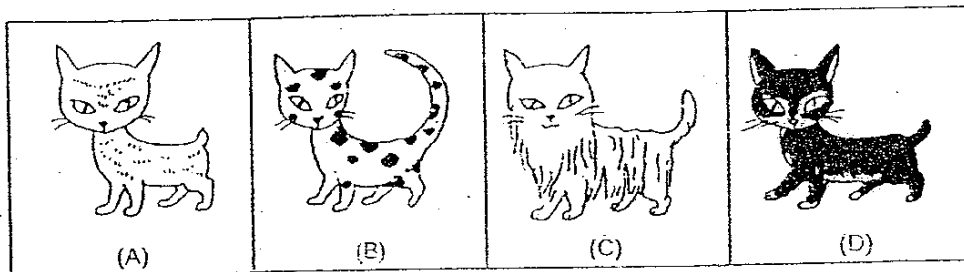


Which of the following statements about binary fission in the amoeba are true?

- A: Only one parent is involved in the reproduction.
- B: The parent amoeba divides itself into two amoebae.
- C: The amoeba produces eggs.
- D: Only the nucleus divides itself.

- (1) A and B only
- (2) B and C only
- (3) A, B and C only
- (4) A, B, C and D

14. A research scientist has four cats in his laboratory. He wants to use genetic selection to produce a cat that is spotted with a long tail and long fur.

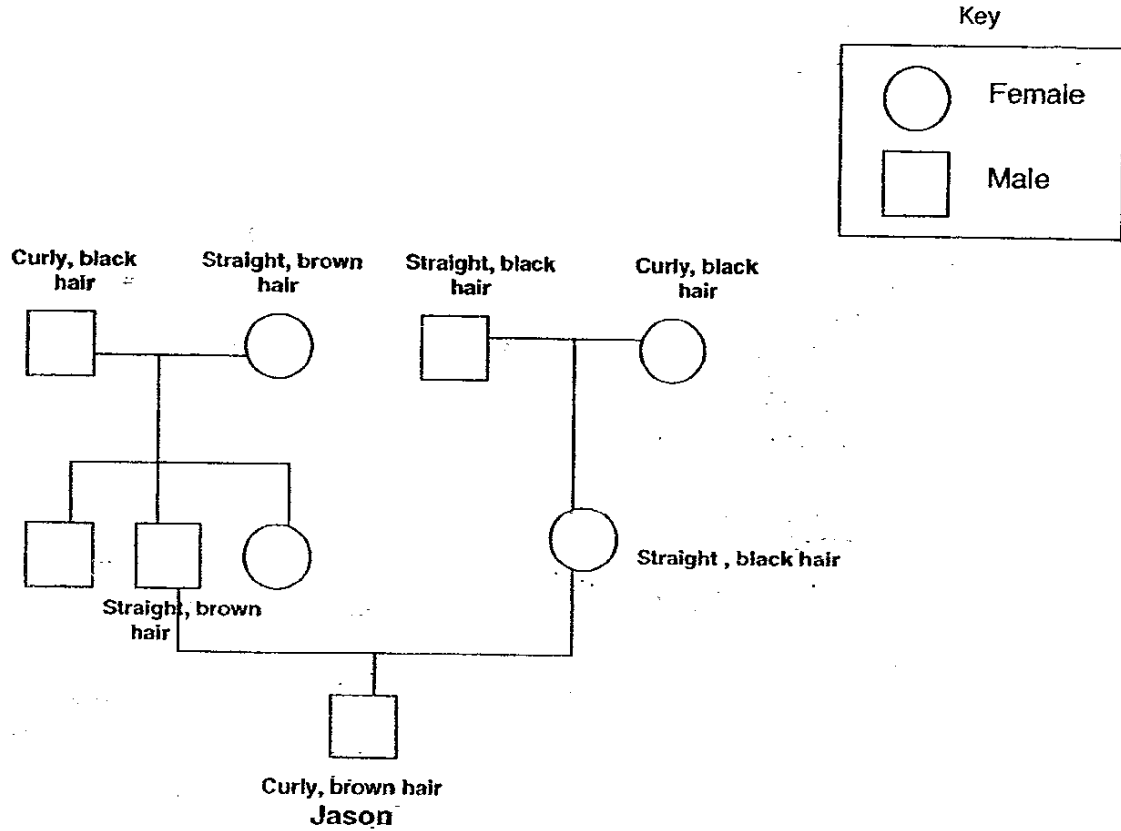


Which two cats should he take the genes from?

- (1) A and B
- (2) A and D
- (3) B and C
- (4) C and D

( Go on to the next page)

15. The diagram below represents Jason's family tree.



From whom could Jason have inherited his curly hair?

- A: His father
  - B: His mother
  - C: His paternal grandfather
  - D: His maternal grandmother
- (1) A and B only                      (2) C and D only
- (3) A, B and C only                  (4) A, B, C and D

End of Section A

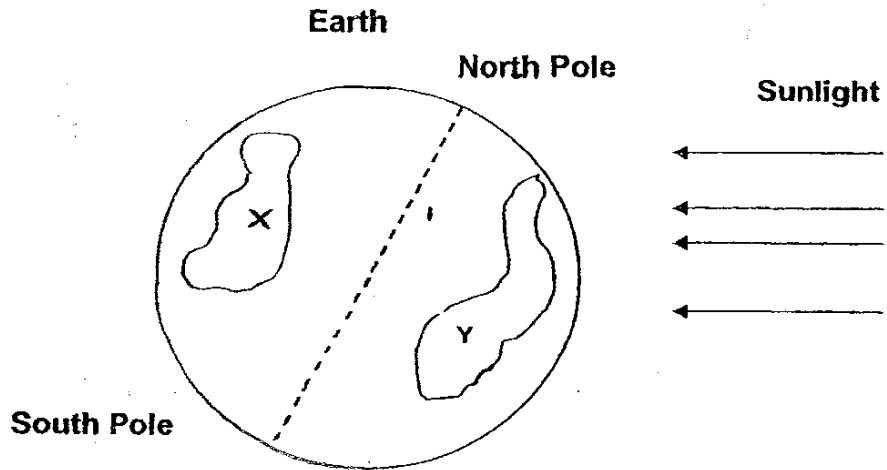
6

( Go on to the next page)

**SECTION B ( 20 MARKS)**

For questions 16 to 23, write your answers in this booklet.

16. The diagram below shows the Earth receiving light from the Sun.



(a) In the diagram above, which country, X or Y, is experiencing night? (1m)

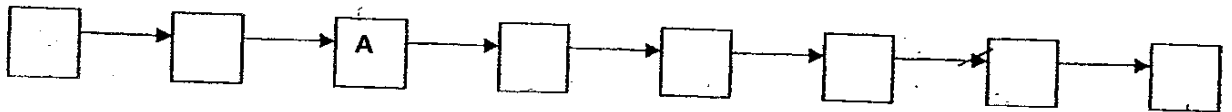
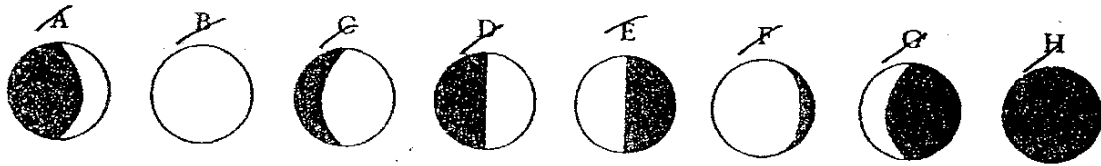
---

(b) Shade on the diagram above, the part of the Earth that is experiencing night. (1m)



17. The shape of the Moon depends on how much of its brightened side is visible to us.

(a) Arrange the phases of the Moon in order by writing the letters (A-H) in the boxes. **A is the Crescent after the New Moon.** It has been labelled for you. (1m)



(b) What causes the changing phases of the Moon? (1 m)

---

---

18. Based on the information in the given table below, answer the following questions.

Planet	Distance from the Sun ( million km)	Length of Day (hours)	Time taken to orbit the Sun
Mercury	58	1368	88 Earth days
Venus	108	5832	225 Earth days
Earth	150	24	365 Earth days
Mars	228	9.8	687 Earth days
Jupiter	778	10	12 years
Saturn	1427	18	30 years
Uranus	2870	19	84 years
Neptune	4497	6	165 years

- (a) State the relationship between the distance the planet is from the Sun and the time taken for the planet to orbit the Sun. (1 m)

---



---



---

- (b) How many revolutions would Jupiter make when Uranus makes one revolution? (1m)

---

- (c) Based on the data given, what deduction can be made about the speeds of rotation of Jupiter and Venus ? (1 m)

---

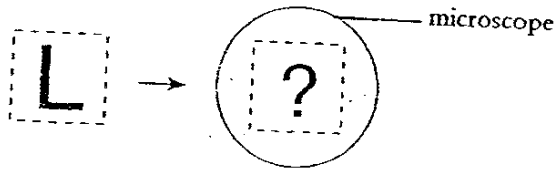


---

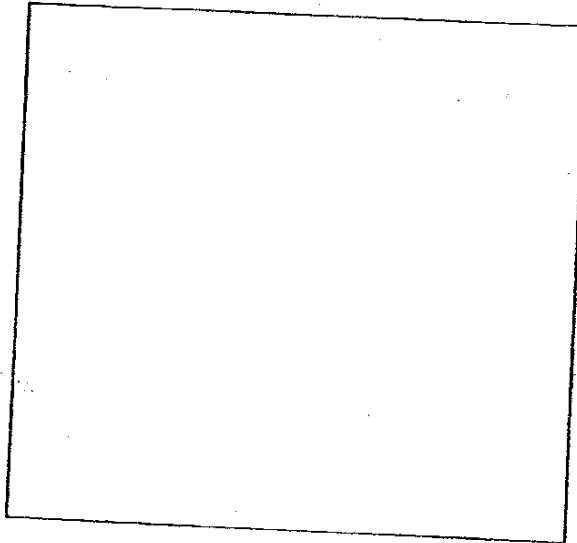


---

19. Joanne placed a cut-out of a letter L under a microscope in the manner shown below.

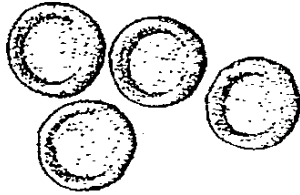


- a) Draw the image that Joanne would see through the eyepiece of the microscope. (1 m)

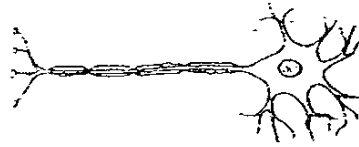


- b) How would you describe the appearance of the image seen? (1m)
-

20. The diagram below shows two animal cells.



Red Blood Cells



Nerve Cell

Based on the diagram above, state two ways in which they are different. (Do not mention shape and size) (2 m)

i) \_\_\_\_\_

\_\_\_\_\_

ii) \_\_\_\_\_

\_\_\_\_\_

21. Write 'True' or 'False' for each statement below. (3m)

No	Statements	T/F
(a)	Larger animals will always have larger cells than smaller animals of the same kind.	
(b)	All cells have a nucleus.	
(c)	All living things and non-living things are made up of cells.	
(d)	Yeasts, paramecium and amoeba are single-celled microorganisms.	
(e)	All cells carry out the same function.	
(f)	The organs in the human body are formed by groups of cells working together.	

Rosyth Primary School

Primary 5 Science CA1 Exams (2007)

*Answer Keys*

SECTION A : (60 MARKS)

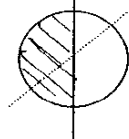
Qn no.	Ans
1	4
2	3
3	3
4	3
5	2
6	3
7	3
8	4
9	2
10	4

Qn no.	Ans
11	1
12	3
13	1
14	3
15	2

SECTION B (40 MARKS)

16a. In the diagram above, country X is experiencing night.

16b.



17a. G → H → A → D → C → B → F → E

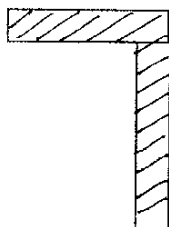
17b. The revolution of the moon around the earth is revolving around the sun, thus the moon reflects light to many different angle on the earth.

18a. The further away a planet is away from the sun, the longer the time taken to orbit around the sun.

18b. Revolutions.

18c. Jupiter rotates faster than Uranus.

19a.



19b. The image is upside down

- 20 (i) **The nerve cell has many branches while the red blood cells have none.**  
(ii) **The nerve cell has nucleus while the red blood cells do not.**

- 21a. F  
21b. F  
22c. F  
22d. T  
22e. F  
22f. T