

Catholic High School (Primary)
Primary 3 Science 2022
Weighted Assessment 2

Name: _____ ()

Class: Pri 3 _____

MARKS	20
-------	----

Date: 27 April 2022

Parent's Signature: _____

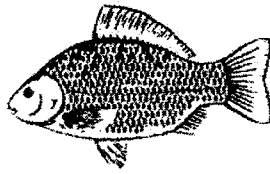
Section A (6 × 2 marks)

For each question from 1 to 6, four options are given. One of them is the correct answer. Make your choice (1, 2, 3 or 4). Write your answer in the brackets provided.

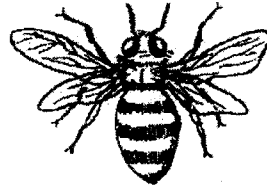
- 1 Which observation correctly matches the characteristic of living things?

	Observation	Characteristic
(1)	A frog lays eggs.	Living things can grow.
(2)	A caterpillar changes into a butterfly.	Living things need air, food and water.
(3)	A boy moves his foot away from a sharp object he had stepped on.	Living things can reproduce.
(4)	A monkey swings from tree to tree.	Living things can move on its own. ()

2 The diagrams below show two animals.



fish



insect

Which is a common characteristic of a fish and an insect?

- (1) Both lay eggs.
- (2) Both have six legs.
- (3) Both live on land only.
- (4) Both have scales on their body. ()

3 The table below shows the characteristics of two groups of animals.
A tick (✓) represents that the animal has the characteristic.

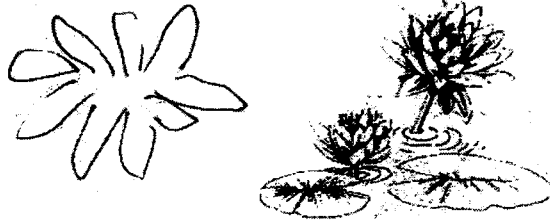
Characteristics	Group S	Group T
lives in water only		✓
has dry skin	✓	
reproduces by laying eggs	✓	✓
has scales	✓	✓

Which of the following best represents Groups S and T?

	Group S	Group T
(1)	bat	whale
(2)	crocodile	goldfish
(3)	whale	crocodile
(4)	crocodile	bat

()

4 The diagram below shows a plant found in a pond.

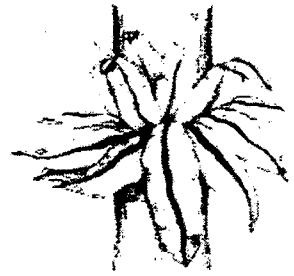
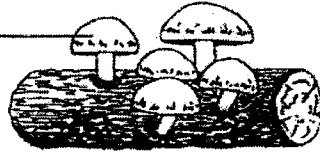


Which set of characteristics below best represents the above plant?

Characteristics			
	has flower	makes its own food	grows on land
(1)	✓	✓	✓
(2)		✓	
(3)	✓	✓	
(4)			✓

5 Study the diagrams:

toadstool



bird's nest fern

Which statement(s) about the living things is/are not correct?

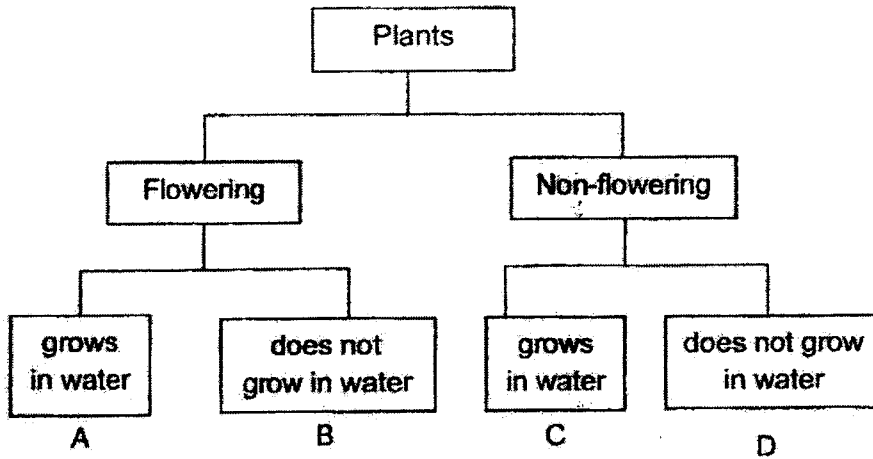
- A Both have flowers.
- B Both reproduce from spores.
- C Both cannot make their own food.

- (1) B only
- (2) C only
- (3) A and B only
- (4) A and C only

()

6 The table below contains some information on two plants X and Y.

Characteristics	Plant X	Plant Y
bears flowers	✓	
grows on land		✓



From the information given in the table above, where would you classify plants X and Y in the diagram?

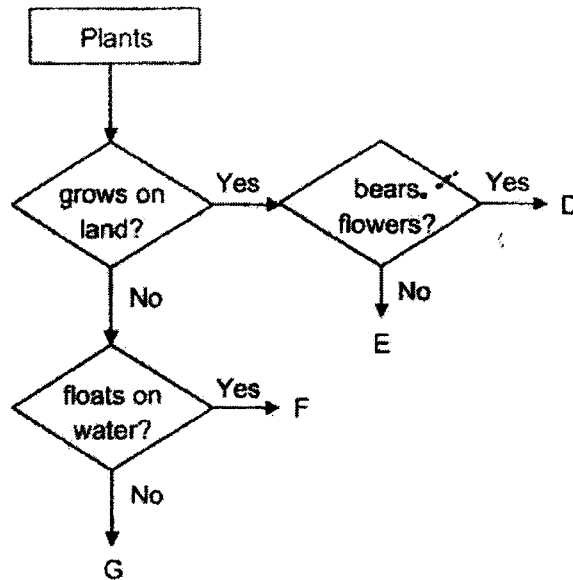
	Plant X	Plant Y
(1)	A	C
(2)	A	D
(3)	B	C
(4)	B	D

Section B (8 marks)

For questions 7 to 9, write your answers in this space provided.

The number of marks available is shown in brackets [] at the end of each question or part question. (8 marks)

7 Study the diagram.



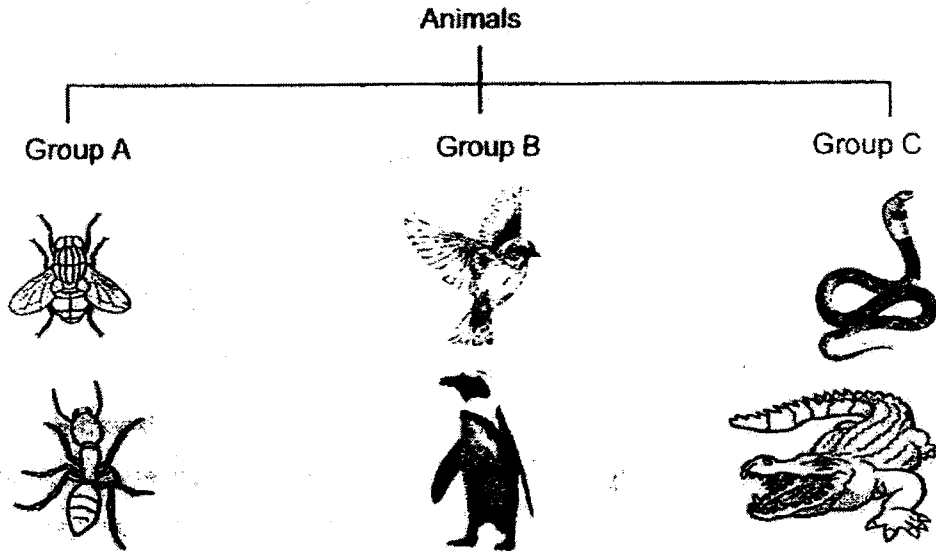
(a) State a similarity between plants F and G. [1]

(b) State a difference between plants D and E. [1]

(Go on to the next page)

SCORE	2
-------	---

8 Study the groups of animals.



(a) Name the group of animals for Group A and Group B. [1]

Group A: _____

Group B: _____

(b) Based on the diagram, state one main characteristic of the animals in Group C that is not a characteristic of animals in Groups A and B. [1]

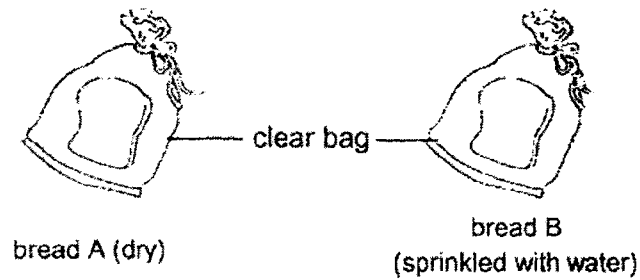
(c) Write "T" for true and "F" for false in the boxes. [2]

i.	Birds are the only animals with feathers.	
ii.	Amphibians live on land.	
iii.	Mammals produce milk for their young.	
iv.	Only insects lay eggs.	

(Go on to the next page)

SCORE	4
-------	---

- 9 Amanda carried out an experiment using two pieces of bread A and B. They were placed on a table in the same room.



She recorded her observations for 7 days in the table below.

Day	bread A	bread B
2	no observable change	no observable change
4	no observable change	a few dark spots
7	no observable change	more dark spots

She observed that the dark spots on bread B were mould.

- (a) Which group of living things does mould belong to? [1]

- (b) What should Amanda keep the same in this experiment?
Put a tick (✓) in the correct box. [1]

	Tick (✓)
type of bread	
presence of water	
type of clear bag	

SCORE	2
-------	---

End of Paper

ANSWER KEY

YEAR : 2022
 LEVEL : PRIMARY 3
 SCHOOL : CATHOLIC HIGH SCHOOL (PRIMARY)
 SUBJECT : SCIENCE
 TERM : WA2

BOOKLET A

Q1	4	Q2	1	Q3	2	Q4	3	Q5	4
Q6	2								

BOOKLET B

Q7a)	They both do not grow on land.	
Q7b)	Plant D bears flowers while plant E does not bear flowers.	
Q8a)	Group A: Insects Group B: Birds	
Q8b)	Group C has dry skin with scales.	
Q8c)	i) T ii) F iii) T iv) F	
Q9a)	Fungi	
Q9b)		Tick (✓)
	Type of bread	✓
	Presence of water	
	Type of clear bag	✓

