



NAN HUA PRIMARY SCHOOL
SEMESTRAL ASSESSMENT 2 - 2008
PRIMARY THREE
SCIENCE

Name : _____ ()

Class : Pr 3 ()

Date : 28 October 2008

Duration : 1 h 45 min

Parent's Signature: _____

MARKS	
SECTION A:	/ 60
SECTION B:	40
TOTAL :	100

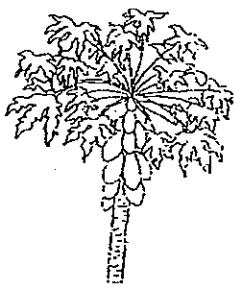
SECTION A (30x2 marks)

Each question is followed by four options. One of them is the correct answer. Make your choice (1, 2, 3 or 4). Shade the correct oval (1, 2, 3 or 4) in the Optical Answer Sheet.

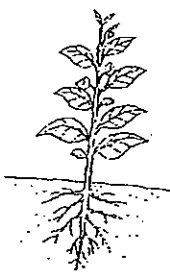
1. What are the common characteristics of the living things shown below?



mushroom



papaya tree



balsam



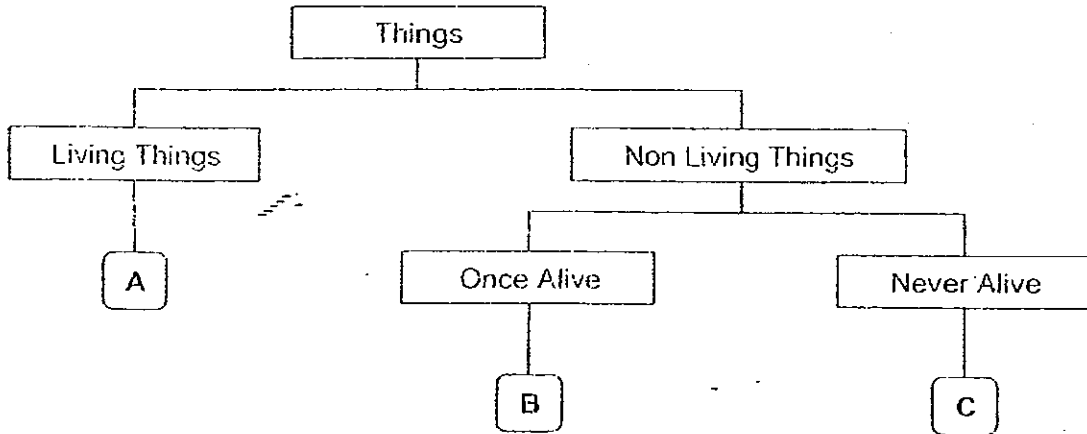
coconut tree

- A: They reproduce from spores.
- B: They are fixed in one position.
- C: They can make their own food.
- D: They respond to changes around them.

- (1) A and B only
- (3) A and D only

- (2) B and D only
- (4) B, C and D only

2. Study the classification table below carefully.



Which of the following best represents A, B and C respectively ?

	A	B	C
(1)	Hibiscus	Cotton T-shirt	Metal Ball
(2)	Cactus	Metal Ball	Eagle
(3)	Sunflower	Elephant	Glass
(4)	Rose	Glass	Cotton T-shirt

3. Which of the following statements describes living things correctly ?

- A: They need air
- B: They need food.
- C: They need water.
- D: They need fertilizers.

- (1) A and B only
- (2) B and C only
- (3) A, B and C only
- (4) A, B and D only

4. The table below shows the number of squirrels in a forest over a period of 4 weeks. Which of the following is/are most likely to be the reason for the change in the number of squirrels?

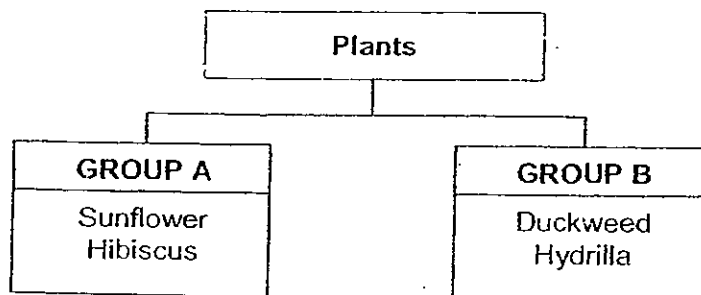
Weeks	Number of Squirrels
1	60
2	54
3	47
4	40

- A: There is an increase in reproduction of the squirrels.
 B: There is an increase in the growth of peanuts in the forest.
 C: There is an increase in human hurting activity in the forest.
 D: There is an introduction of a population of snakes into the forest.
- (1) A and B-only (2) B and C only
 (3) C and D only (4) A, C and D only

5. Bread mould, yeast and mushroom are _____

- (1) fungi
 (2) bacteria
 (3) flowering plants
 (4) non-flowering plants

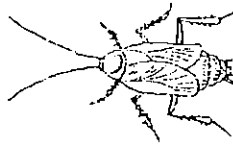
6. Study the classification table below.



Which one of the following can most possibly be classified under Group B ?

- (1) Ixora (2) Lotus
 (3) Orchid (4) Staghorn Fern

7. Examine the pictures given below carefully.
In what ways are the animals similar ?



cockroach



dragonfly



owl



eagle

- A: They have wings.
B: They have two legs.
C: They have feathers.
D: They hatch from eggs.

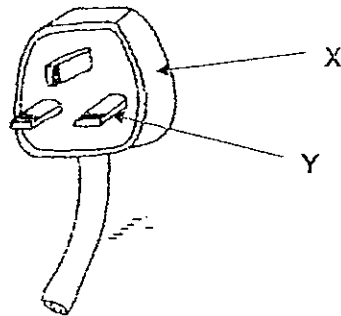
- (1) A and B only
(3) B and D only

- (2) B and C only
(4) A and D only

8. Which one of the following group of animals has the function of the outer coverings matched to it wrongly ?

	Animal	Outer Body Covering	Function
(1)	Bird	colourful feathers	camouflage with the surrounding
(2)	Insect	hard outer covering	protect its body
(3)	Fish	scales	propel it in swimming
(4)	Mammal	fur	keep its body warm

9. The picture below shows a plug.



Which one of the following best represents the materials that are used to make X and Y respectively?

	X	Y
(1)	Ceramics	Wood
(2)	Plastic	Metal
(3)	Glass	Rubber
(4)	Metal	Plastic

10. Which of the following materials is classified incorrectly ?

	From Plants	From Animals
(1)	Cotton	Silk
(2)	Plastic	Cane
(3)	Rubber	Leather
(4)	Wood	Fur

11. Shopping bags are usually made of plastic because plastic is _____.

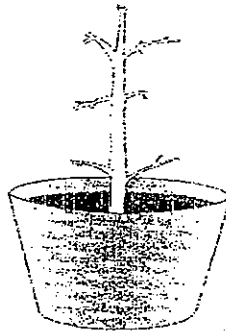
- A: light
- B: fragile
- C: durable
- D: waterproof

- (1) A and B only
- (2) B and C only
- (3) A, C and D only
- (4) B, C and D only

12. The table below shows the properties of some materials.
Which one of the following materials has its properties stated incorrectly ?

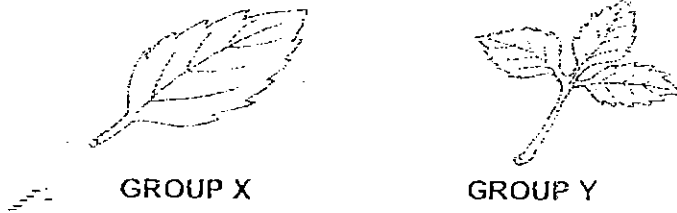
	Materials	Properties		
		Transparent	Breaks easily	Floats in water
(1)	iron	X	X	X
(2)	Ceramic	X	√	X
(3)	Styrofoam	√	X	√
(4)	Glass	√	√	X

13. Susan decided to pluck off all the leaves on her tomato plant as it was full of pests.
What do you think will happen to her plant?

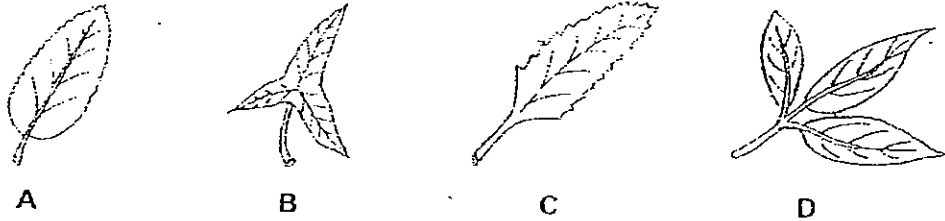


- (1) The plant will die.
- (2) The plant will grow healthily.
- (3) The plant will continue to make food without the leaves.
- (4) The plant will not be able to absorb water and mineral salts.

14. Look at the leaves labelled Group X and Y respectively.

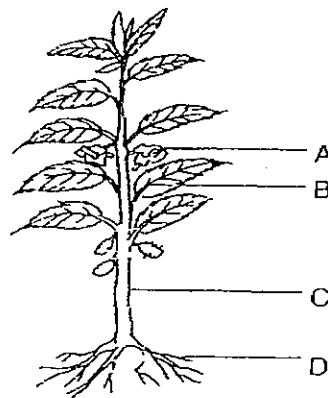


Look at the four leaves shown below. Based on the diagram above, which one of the following show the classification of the leaves correctly?



	Leaf A	Leaf B	Leaf C	Leaf D
(1)	Group X	Group Y	Group X	Group Y
(2)	Group X	Group X	Group X	Group Y
(3)	Group Y	Group Y	Group Y	Group X
(4)	Group Y	Group X	Group Y	Group Y

15. Which part of the plant shown below helps to support the branches and the leaves?



- (1) A
- (3) C

- (2) B
- (4) D

16. A water hyacinth is a floating water plant. How are the roots of the water hyacinth useful to the plant ?

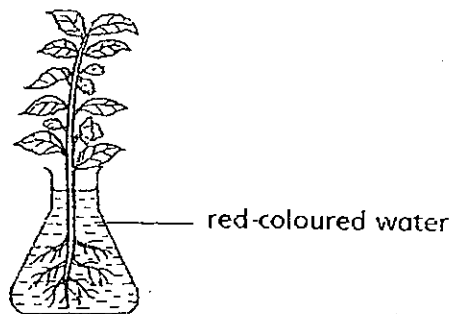


Water hyacinth

- A: The roots store food.
- B: The roots absorb minerals salts from the water.
- C: The roots transport water and food throughout the plant.
- D: The roots have air spaces between them and these help the plant to float.

- (1) A only
- (2) B only
- (3) A and C only
- (4) C and D only

17. A balsam plant with white flowers is placed into a flask of red-coloured water for two days. What would you observe after two days?



- (1) The flowers turned into fruits.
- (2) The leaves and flowers turned red.
- (3) The water level in the flask remained the same.
- (4) The colour of the leaves and flowers remained the same.

18. Which statement best describes the function of the roots shown below?



Carrot



Sweet potato



Turnip

- (1) They store food for the plants.
- (2) They help the plants to climb.
- (3) They make food for the plants.
- (4) They help the plants to breathe.

19. The human body is able to move because the muscular system works together with the _____ system.

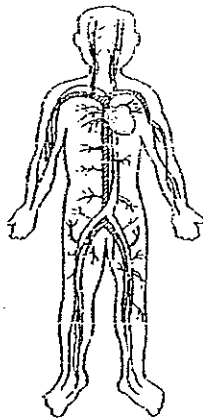
- (1) skeletal
- (2) digestive
- (3) circulatory
- (4) respiratory

20. When playing basketball, Jimmy needs to make use of his _____ system(s) so that he has receives enough oxygen and energy to move around swiftly and steadily.

- A: skeletal
- B: muscular
- C: respiratory
- D: circulatory

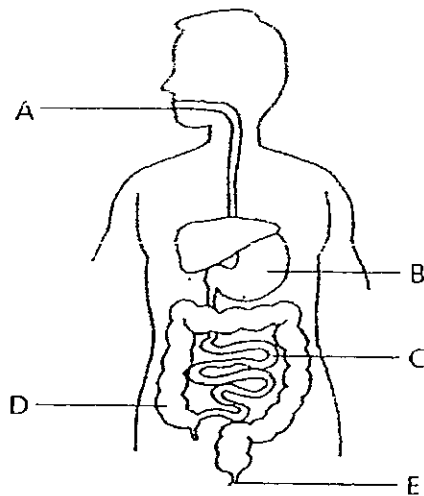
- (1) A only
- (2) A and B only
- (3) A, B and C only
- (4) A, B, C and D

21. Which of the following statements about the circulatory system shown below are correct ?



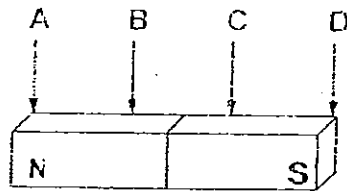
- A: It is made up of blood and blood vessels.
B: It breaks down food into simpler substances.
C: It carries food, water and oxygen to all parts of the body.
D: It carries waste materials away from all parts of the body to be removed.
- (1) A and B only (2) B and C only
(3) A and C only (4) A, C and D only
22. We each have a set of teeth. How do our **teeth** help in the digestion of the food we eat?
- (1) They make the food soft.
(2) They protect the digestive organs.
(3) They cut and grind the food into smaller pieces.
(4) They break down the food into simpler substances.
23. Which one of the following statements is incorrect ?
- (1) Saliva is a digestive juice.
(2) Digestion does not take place in the gullet.
(3) Food is completely digested in the stomach.
(4) Our tongue helps to mix food with saliva in the mouth.

24. Study the diagram below carefully.
 Digestion begins in the part labelled _____ and is completed in the part labelled _____.



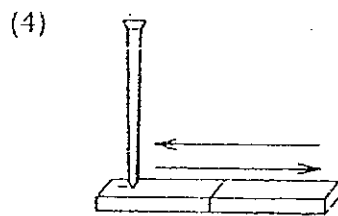
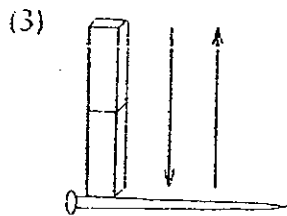
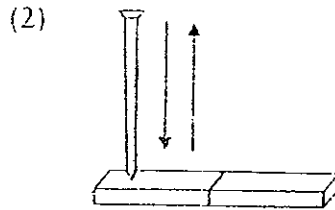
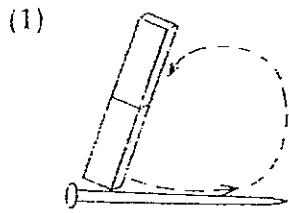
- (1) A, B
 (2) A, C
 (3) A, D
 (4) B, D

25. The picture shows a bar magnet A, B, C and D are 4 points on the magnet. At which one of these points will the magnetic pull be the strongest ?

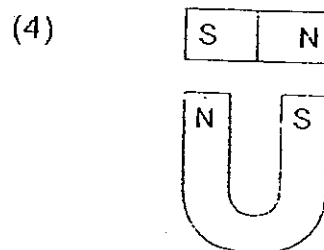
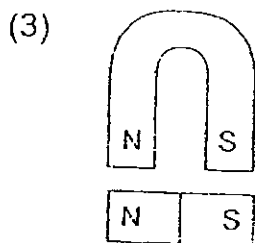
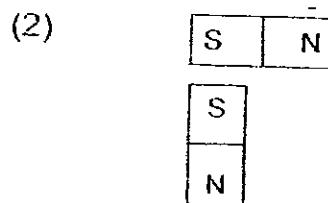
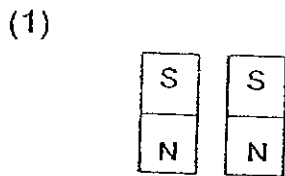


- (1) A only
 (2) B only
 (3) B and C only
 (4) A and D only

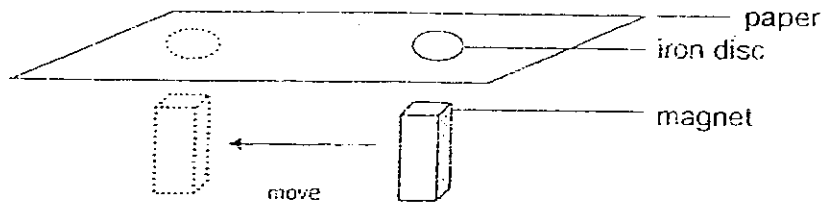
26. Which one of the following is the correct way of making a temporary magnet out of an iron nail?



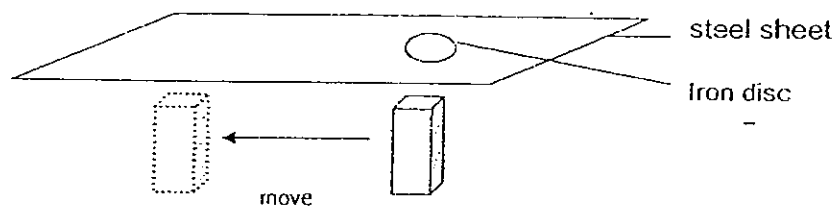
27. Which one of the following pairs of magnets will be attracted to each other?



28. Mary placed an iron disc on a sheet of paper and held a magnet under the paper as shown in the diagram below. She noticed that when the magnet moved, the iron disc would move in the same direction.



However, when the same experiment was repeated by replacing the sheet of paper with a steel sheet as shown in the diagram below, the iron disc did not move with the magnet.



Which of the following correctly explains what happened?

- (1) The steel sheet repelled the iron disc
 - (2) The iron disc was too far from the magnet.
 - (3) The iron disc was made of non-magnetic material.
 - (4) The steel sheet did not allow magnetism to pass through.
29. Which one of the following **does not** make use of magnets?
- (1) Telephone
 - (2) Compass
 - (3) Refrigerator
 - (4) Hammer
30. When Ronny placed three magnets close together as shown in the diagram below, the magnets **repelled** one another.



Which one of the following best represent X and Y respectively?

	X	Y
(1)	N-pole	S-pole
(2)	S-pole	N-pole
(3)	N-pole	N-pole
(4)	S-pole	S-pole



NAN HUA PRIMARY SCHOOL
SECOND SEMESTRAL ASSESSMENT - 2008
PRIMARY THREE
SCIENCE

Name _____ ()

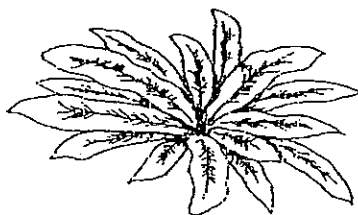
Class : Primary 3 ()

MARKS	
40	

Section B (40 marks)

Write your answers to questions 31 to 46. The marks available is shown in brackets [] at the end of each question or part question.

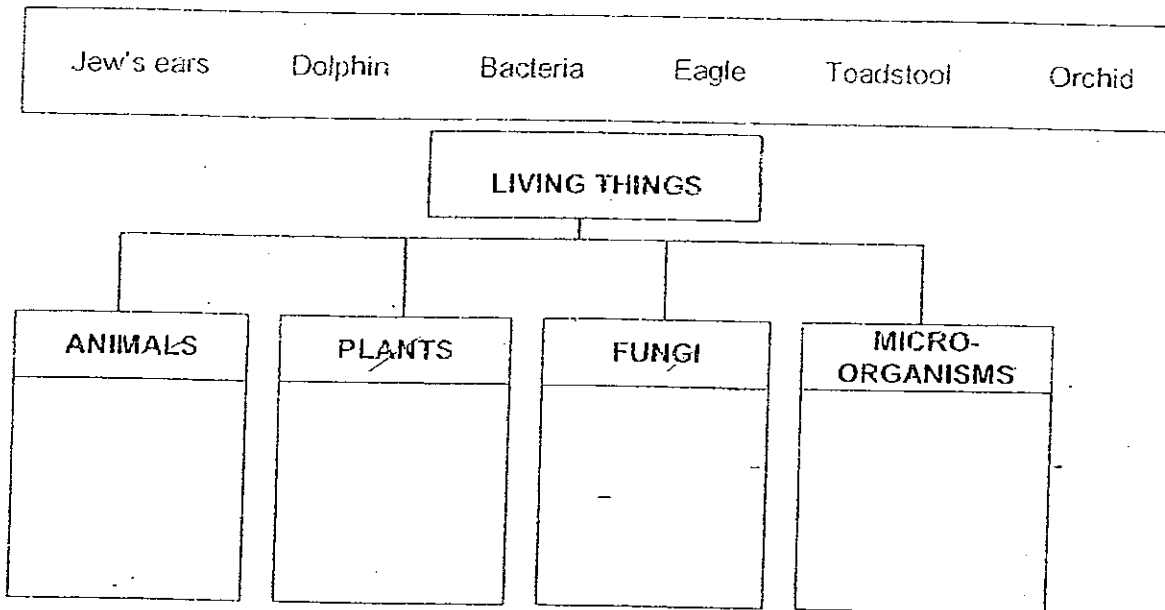
31. Study the arrangement of the leaves of the plant below carefully.



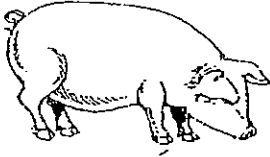

How does the arrangement of the leaves above help the plant? [2]

Score	2
-------	---

32. Group the following living things correctly in the classification chart provided.
Use each word ONCE only. [3]



33. In the table below, write down 2 differences between the pig and bird on the stated characteristics. [2]

	PIG	BIRD
Characteristics		
Type of outer body covering		
Method of reproduction		

A
B

Score	5
-------	---

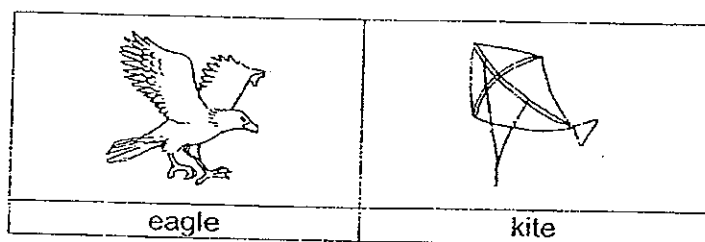
34. The diagram below shows some goldfish in a small fish bowl. The fish are swimming to the surface of the water and they appear as though they are dying soon.



- (a) Why do the fish swim to the surface of the water? [1]

- (b) Without changing the original fish bowl or removing any of the fish, what can be done to prevent the fish from dying? [1]

35. Study the diagram below.



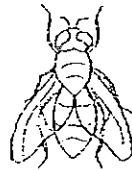
Give 2 reasons to show that ^{an eagle} a bird is a living thing but a kite is not. [2]

(a) Reason 1: _____

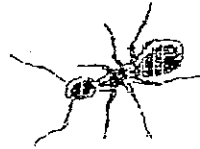
(b) Reason 2: _____

Score	4
-------	---

36. Study the diagrams below carefully.



Housefly

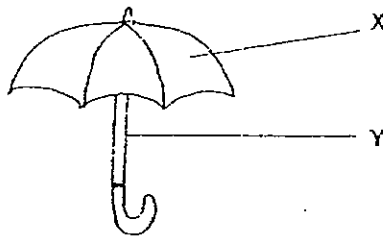


Ant

(a) State one **observable similarity** between the two animals in the above diagrams.
(Do not compare their size, colour, movement, diet or method of reproduction.) [1]

(b) State one **observable difference** between the two animals shown in the diagram.
(Do not compare their size, colour, movement or diet) [1]

37. The figure below shows an umbrella.

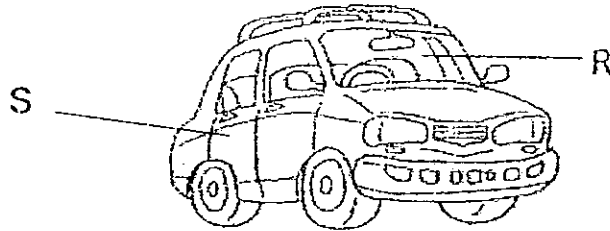


(a) State an **important** property of material X. [1]

(b) Give an example of a material that can be used to make part Y. [1]

Score	4
-------	---

38. Look at the diagram of a car below.



(a) Name the material best used to make the parts, labelled R and S respectively. [1]

(i) R: _____

(ii) S: _____

(b) Give a reason for each of your answer in (a). [2]

(i) R: _____

(ii) S: _____

39. Study the diagrams below carefully.



water chestnut



ginger



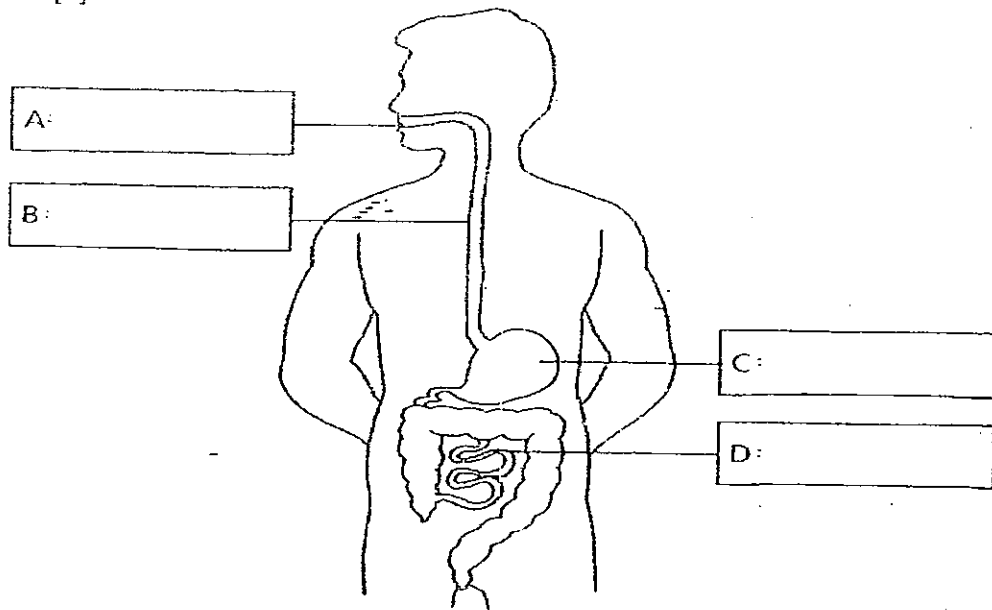
potato

(a) Name the part of the plants shown in the diagram above. [1]

(b) Name one special function of the plant part stated in your answer in (a). [1]

Score	5
-------	---

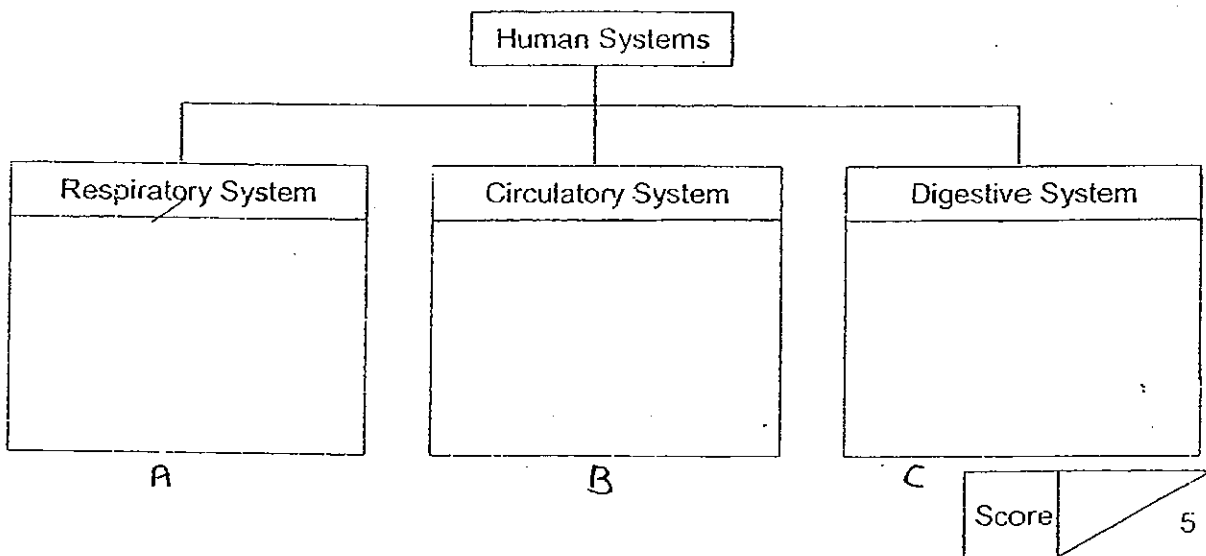
40. Study the human body system below carefully.
Write the name of the parts labelled A, B, C and D respectively in the boxes below. [2]



41. This box contains parts of different systems in the human body.

Lungs	Large Intestine	Windpipe
Heart	Blood Vessels	Anus

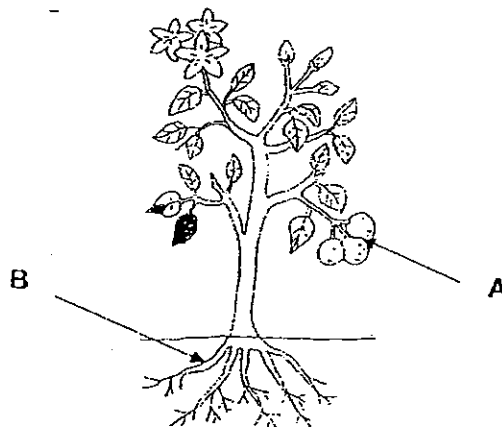
Classify each part in the table below correctly. [3]



42. Use the descriptions provided in the table below to identify each organ.
Write the names of the organs in the table shown below. [4]

	Function	Name of Organ
(a)	It carries partly digested food from the mouth to the stomach.	
(b)	It is the lowest part of the large intestine and it stores solid food waste.	
(c)	More digestive juices are added to complete the digestion of food. The digested food is passed into the bloodstream to be carried to different parts of the body.	
(d)	The food is churned, mashed and mixed with gastric juices to form a thick semi-digested liquid.	

43. The diagram below shows a plant with its parts labelled A and B respectively.



- (a) What is the function of the part labelled A? [1]

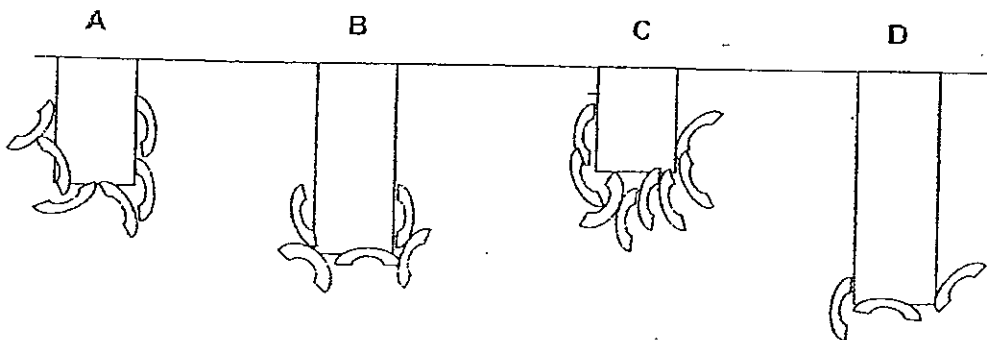
- (b) What is the function of the part labelled B? [1]

44. Classify each of the following materials under the correct heading.
Use each word **ONCE** only. [3]

plastic	iron	gold	copper	steel	glass
---------	------	------	--------	-------	-------

Magnetic materials	Non-magnetic materials

45. John set up an experiment using 4 magnets (A, B, C and D). He hung them at a distance from a pile of metallic strips. Then he observed the number of metallic strips attracted by each magnet as shown in the diagram below.



- (a) Based on results shown above, arrange the magnets (A, B, C and D), from the strongest to the weakest. [2]

--	--	--	--

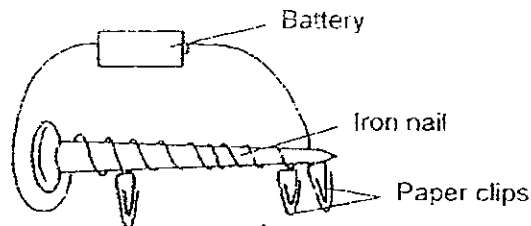
strongest

weakest

- (b) What can John conclude from his experiment? [1]

Score	6
-------	---

46. Susan set up an experiment as shown below. She coiled an electrical wire around an iron nail and connected both of its ends to a battery. When a pile of paper clips were placed at a distance from the iron nail, it was observed that some paper clips were attracted to it as shown in the diagram below.



- (a) What will Susan observe when the battery is removed? [1]

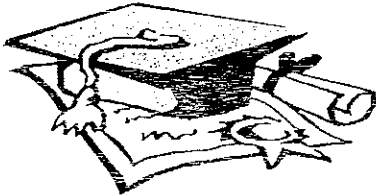
- (b) Suggest 2 methods which Susan can use to improve on her set-up so that the iron nail can attract more paper clips from the same distance. [2]

(i) Method 1: _____

(ii) Method 2: _____

Score	3
-------	---

~ End of Paper ~



ANSWER SHEET

EXAM PAPER 2008

SCHOOL : NAN HUA PRIMARY SCHOOL
SUBJECT : PRIMARY 3 SCIENCE

TERM : SA 2

Q1	Q2	Q3	Q4	Q5	Q6	Q7	Q8	Q9	Q10	Q11	Q12	Q13	Q14	Q15	Q16	Q17
3	1	3	3	1	2	4	2	2	2	3	3	1	2	3	2	2

Q18	Q19	Q20	Q21	Q22	Q23	Q24	Q25	Q26	Q27	Q28	Q29	Q30
1	1	4	4	3	3	2	4	1	4	4	4	4

31) This arrangement allows the leaves to absorb the maximum amount of sunlight to make food as there is minimum overlapping of leaves covered by other leaves.

32) ANIMALS: Dolphin, Eagle
PLANTS: Orchid
FUNGI: Jews ears, Toadstool
MICRO-ORGANISMS: Bacteria

33) A: hair feathers
B: reproduce by giving birth to young alive lay eggs

34) a) The fish does not have enough air so it needs to swim to the surface of the water to get enough air.
b) Install an air pump.

35) a) The eagle can reproduce but the kite cannot reproduce.
b) The eagle needs air, food and water but kite does not need air, food and water.

36)a)They both have a pair of feelers, three body parts and six legs.
b)The house fly has wings but the ant does not have wings.

37)a)It needs to be waterproof.
b)Metal.

38)a)i)Glass ii)Metal
b)i)It is transparent. ii)Metal is chosen because it is strong and hard.

39)a)They are underground.
b)It stores food for the plant.

40)A: mouth B: gullet C: stomach D: small intestine

41)A: Lungs, Windpipe
B: Blood vessels, Heart
C: Large intestine, Anus

42)a)gullet b)rectum c)small intestine d)stomach

43)a)It protects the needs.
b)It absorbs water and mineral salts and hold the plant firmly to the ground.

44)Magnetic materials

Iron
Steel

Non-magnetic materials

plastic, gold
copper, glass

45)a)C,A,B,D

b)The magnetism of a magnet does not depend on its size.

46)a)The paper clips will drop.

b)i)She can increase the number of batteries.

ii)She can increase the number of coils around the iron nail.