

Pei Chun Public School
Semestral Assessment 2 – 2004
Science
Primary 3

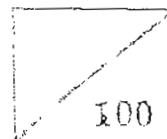
SAR

Name: _____ () Date: 3 November 2004

Class: Pri. 3 () Parent's Signature: _____

Science Teacher: _____

Marks:



Time: 1h 30 min

Section A (25 × 2 marks)

For questions 1 to 25, choose the most suitable answer and shade its number (1, 2, 3 or 4) on the Optical Answer Sheet (OAS) provided.

1. Study the table below. Which of the following is grouped wrongly?

	Living Things	Non-living Things
(1)	eagle	cooked egg
(2)	jelly	seed
(3)	terrapin	artificial plant
(4)	mimosa	latex

()

2. Which of the following pairs describes both living and non-living things?

(A)	It becomes a butterfly.	It lays an egg.
(B)	It moves when operated by a battery.	It turns to face the sun.
(C)	It moves away when there is fire.	It becomes a tree.
(D)	It produces live young.	It does not grow.

- (1) A and C only
(2) A and D only
(3) B and C only
(4) B and D only

()

3. Bala put a cat in a cage and gave it cat food daily. After one week, the cat died. This was because the cat did not have _____.

- (1) air
- (2) fish
- (3) water
- (4) sunlight

()

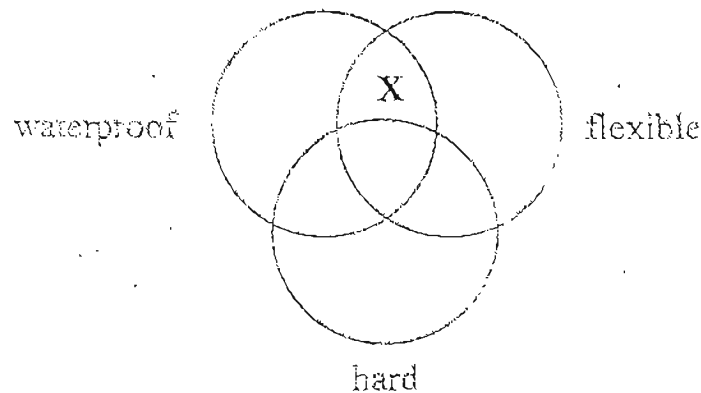
4. Which of the following is a cup fungus?

	A	B	C	D
It can make its own food.	x	x	x	✓
It is fixed in one position.	✓	x	x	✓
It responds quickly to surrounding changes.	x	x	✓	x
It can only be seen through a microscope.	x	✓	x	x

- (1) A
- (2) B
- (3) C
- (4) D

()

5. The Venn diagram shows some properties of a material.

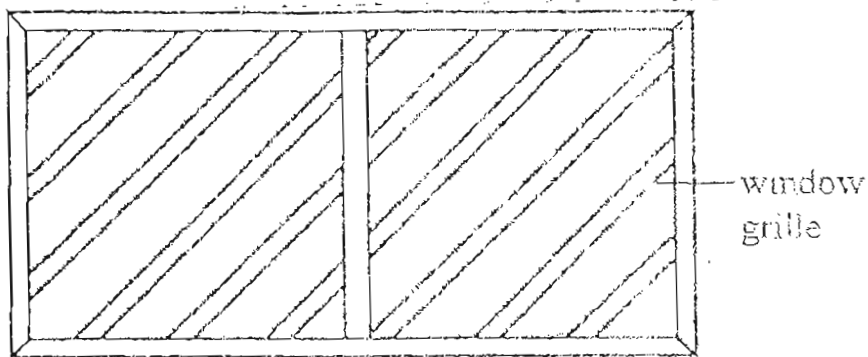


Which of the following objects can 'X' be?

- (1) magnet
- (2) tissue paper
- (3) cotton cloth
- (4) rubber hose

()

6. Why is iron a suitable material for making window grilles?



- (A) It is heavy.
- (B) It sinks in water.
- (C) It is hard and strong.
- (D) It is shiny and smooth.

- (1) C only
- (2) D only
- (3) A and C only
- (4) B and D only

()

7. Weiming found many mosquitoes living in his garden.
On a sunny day, he can find the mosquito larva _____.

- (1) on the leaves of his plants
- (2) in dark and dry corners
- (3) on the garden path
- (4) in his pond

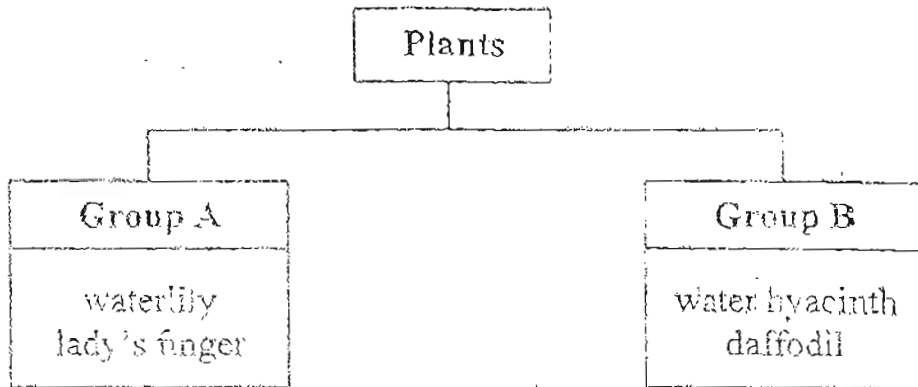
()

8. Which of the following shows the correct order for the growth of a dragonfly?

- (1) egg \rightarrow nymph \rightarrow adult
- (2) egg \leftarrow nymph \leftarrow adult
- (3) egg \rightarrow larva \rightarrow pupa \rightarrow adult
- (4) egg \leftarrow pupa \leftarrow larva \leftarrow adult

()

9. Study the classification.



Which of the following are the correct headings for each group of plants?

	Group A	Group B
(1)	Reproduced by bulbs	Reproduced by seeds
(2)	Reproduced by seeds	Reproduced by bulbs
(3)	Flowering plants	Non-flowering plants
(4)	Water plants	Land plants

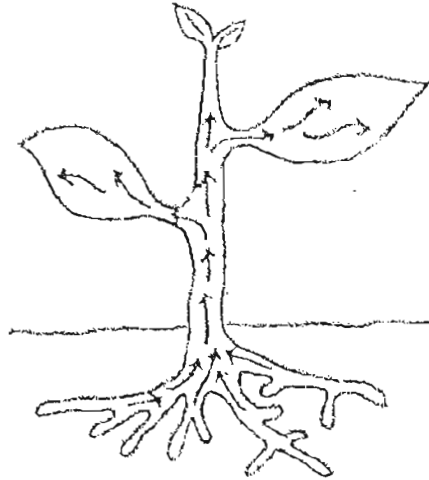
10. The diagram shows a plant part under a microscope.



The tiny openings _____.

- (1) are caused by insects feeding on the plant
- (2) allow water to enter the plant
- (3) are caused by a plant disease
- (4) allow the exchange of gases

11. The diagram shows a plant.



The arrows show the path taken by _____.

- (1) food
- (2) water
- (3) carbon dioxide
- (4) sunlight's energy

()

12. Which of the following make up the transport system of the plant?

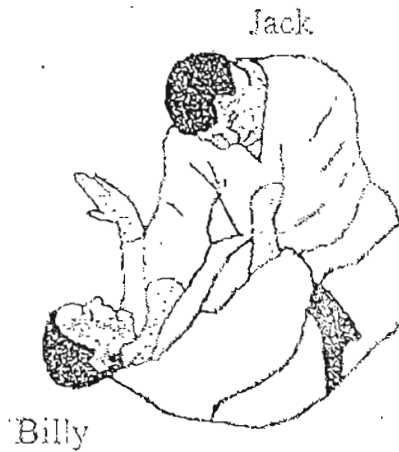
The tubes in the _____.

- (A) stem that carry water and mineral salts
- (B) roots that carry water and mineral salts
- (C) roots that carry food
- (D) stem that carry food

- (1) A and D only
- (2) B and C only
- (3) A, B and D only
- (4) A, B, C and D

()

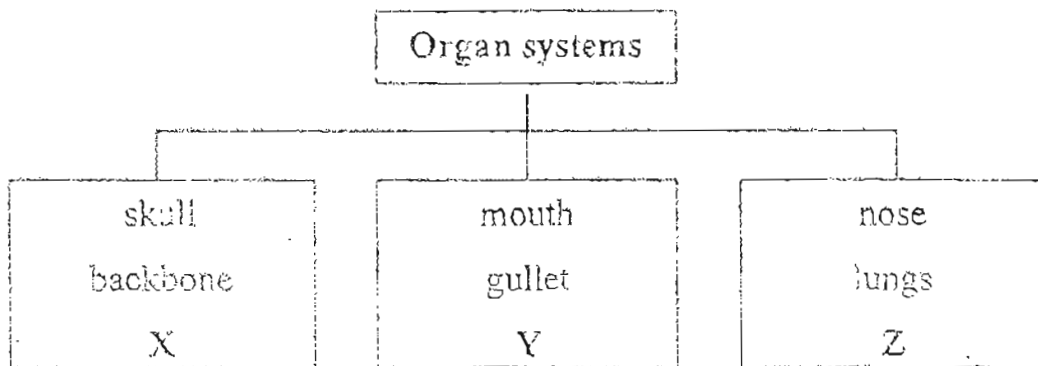
13. Jack is holding down Billy as shown.



If Jack continues in this position, Billy would be in danger because

- (1) his muscular system would get weaker
- (2) his skeletal system would not be able to support him
- (3) his respiratory system would not be able to take in oxygen
- (4) his digestive system would not be able to break down food ()

14. Study the classification chart below.



What should X, Y and Z be?

	X	Y	Z
(1)	ribs	small intestine	windpipe
(2)	thigh bone	anus	blood vessels
(3)	muscle	windpipe	heart
(4)	blood vessels	stomach	ribs

()

15. Meili was blindfolded and asked to identify an object. Which of the following would be a likely observation made by Meili?

- (1) It was fragrant and glowed.
- (2) It was shiny and had no smell.
- (3) It was round, sticky and sweet.
- (4) It was yellow and had square patterns on it.

()

16. A, B, C and D are organs in the digestive system. Which of the following organs is the mouth?

Process	A	B	C	D
Water is absorbed.	x	✓	x	x
Food is grinded.	x	x	x	✓
Food is digested.	✓	x	x	✓
Nutrients are absorbed.	✓	x	x	x

- (1) A
- (2) B
- (3) C
- (4) D

()

17. Tom gobbled up his food and did not chew them well. Which part of his digestive system would have to work harder to digest his food?

- (1) gullet
- (2) stomach
- (3) large intestine
- (4) small intestine

()

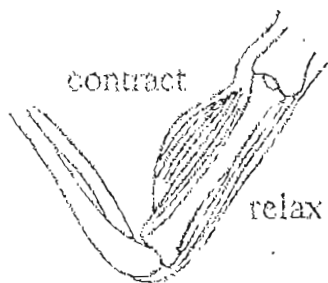
18. Digested food is absorbed into the _____ through the walls of the _____

- (1) small intestine ... stomach
- (2) blood ... small intestine
- (3) skin ... blood vessels
- (4) stomach ... gullet

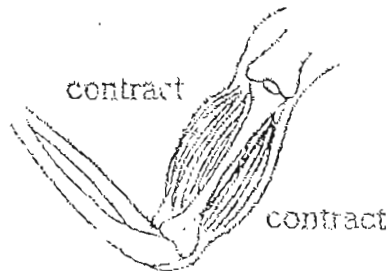
()

19. Which of the following shows what happens to our muscles when we bend our arm?

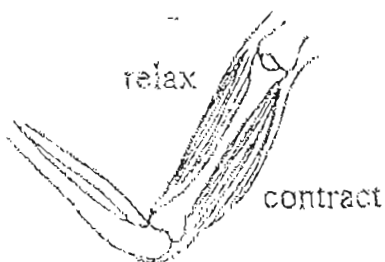
(1)



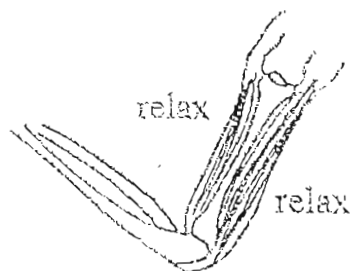
(2)



(3)



(4)



()

20. Which one of the following does not belong to the same group as the rest?

(1) joints at the elbow

(2) joints at the finger



(3) joints at the skull

(4) joints at the knee



()

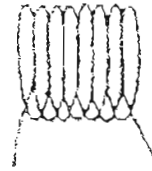
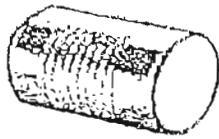
21. Which of the following work together to help us climb the stairs?

- (1) bones and joints only
- (2) skin and muscles only
- (3) bones and muscles only
- (4) bones, joints and muscles only

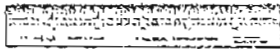
()

22. Which of the following can be attracted by a magnet?

- (1) aluminium can
- (2) copper wire

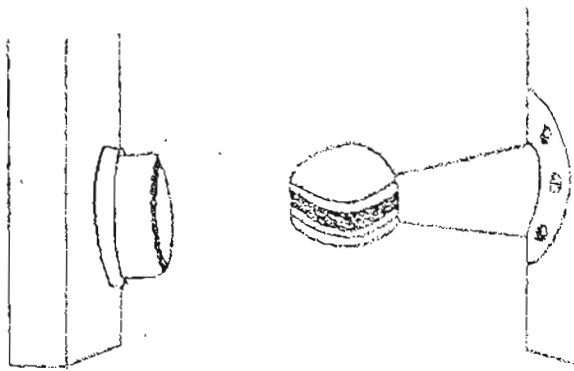


- (3) steel ruler
- (4) silver ring



()

23. The magnet of a door stopper prevents the door from slamming on windy days.

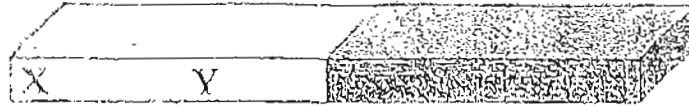


What property of magnets is used?

- (1) Magnets attract magnetic materials.
- (2) Unlike poles of magnets attract while like poles repel.
- (3) It is possible to magnetize and demagnetize magnetic material.
- (4) A freely-turning magnet always comes to rest in a North-South direction.

()

24. Point X of the bar magnet below attracted 15 pins.



How many pins would Point Y attract?

- (1) 20
- (2) 15
- (3) 7
- (4) 0

()

25. A porcupine will turn its back and raise its quills when it is attacked.



What does this tell us about the body covering of the porcupine?

- (1) It keeps the porcupine warm.
- (2) It protects the porcupine from rain.
- (3) It helps the porcupine in its movement.
- (4) It protects the porcupine from other animals.

()

For Questions 26 to 30, please refer to Booklet K.

End of Section A

Pei Chun Public School
Semestral Assessment 2 – 2004
Science
Primary 3

Name: _____ () Date: 3 November 2004

Class: Pri. 3 ()

Parent's Signature: _____

Science Teacher: _____

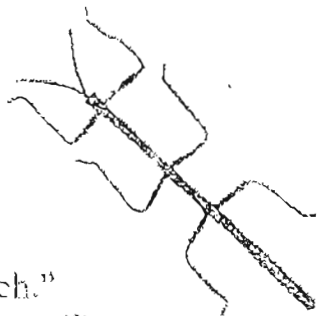
Time: 1h 30 min

Marks for Section A	60
Marks for Section B	30
Marks for Booklet K (exclude Section A Qns. 26 to 30)	10
Total marks	100

Section B (30 marks)

For questions 31 to 42, write the answers in the spaces provided.

31. Ben and Sarah were playing near a forest when they saw an 'object' as shown.



Ben said, "I think it's a branch."
Sarah said, "I think it's an insect!"

(a) Who was correct? _____ (1m)

(b) Give one reason for your answer in part (a). _____ (1m)

(c) What could Ben and Sarah do to find out who was correct? _____ (1m)

32. Write 'T' if the statement is true and 'F' if it is false in the brackets provided. (2m)
- (a) Plants do not need oxygen because only carbon dioxide is needed for photosynthesis. ()
- (b) Our heart and gullet are muscles. ()
- (c) Mould makes its own food from bread. ()
- (d) A compass makes use of the earth's magnetic field to find directions. ()

33. Guohua had a bar magnet and Peiling had a rod magnet. Both were arguing about the strength of their magnets. Guohua said, "My magnet is stronger than yours!" Peiling replied, "No! Mine is bigger than yours, so it's stronger!"

- (a) Underline the correct answer. (1m)
- (i) Guohua is correct / wrong.
- (ii) Peiling is correct / wrong.
- (b) Explain your answer in part (a). (2m)

34. Some materials are hard but not necessarily strong.

Tick two objects that are hard, but not strong. (2m)

Object	Hard but not strong
leather bag	
metal badge	
wooden toothpick	
disposable plastic fork	

35. Fill in the blanks with the correct word from the box.
Each word can only be used once.

(3m)

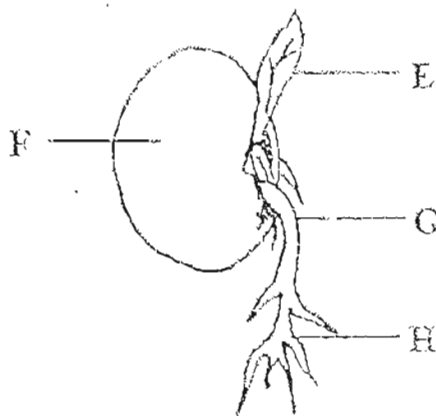
different	develop	stages	extinct
reproduce	cycles	continue	similar

Animals are all around us.

To ensure the survival of their own kind, animals (a) _____.

The young of these animals (b) _____ into adults. The adults reproduce and the (c) _____ repeat. In this way, animals will never become (d) _____. However, not all life cycles are (e) _____. Some cycles have more (f) _____ than other cycles.

36. The picture shows a seedling.



- (a) At this stage, which part of the seedling provides it with food to grow? (1m)
Part _____
- (b) When the food in part (a) is used up completely, which part will then provide food for the seedling to grow well? (1m)
Part _____

37. For each plant below, put a tick (✓) to show if it has a non-woody or woody stem. (2m)

	Non-woody stem	Woody stem
money plant		
rose plant		
morning glory		
hydrilla		

38. Xiaohui was given a pot of unusual flowering plant that had 3 fruits. The plant cannot be found in Singapore.



- (a) With this plant, how can Xiaohui grow 2 more pots? (2m)

- (b) Why is it not a good idea for Xiaohui to keep her plant in the shade all the time? (1m)

39. Our body is made up of various organ systems.
Fill in the major functions of each organ system.

(3m)

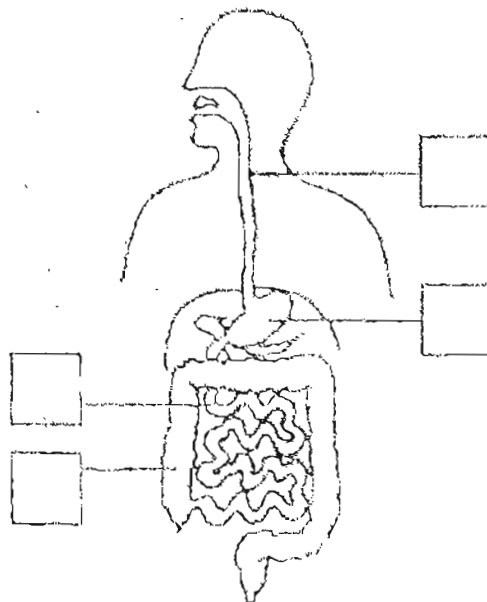
Organ system	Major functions
(a) skeletal system	
(b) digestive system	
(c) muscular system	

40. The diagram shows our digestive system.

- (a) If **Organ A** is missing, waste that is passed out will be watery.
(b) If **Organ B** is missing, digested food cannot be taken to other body parts to provide energy.

Identify the two organs and write 'A' and 'B' in the correct boxes.

(2m)

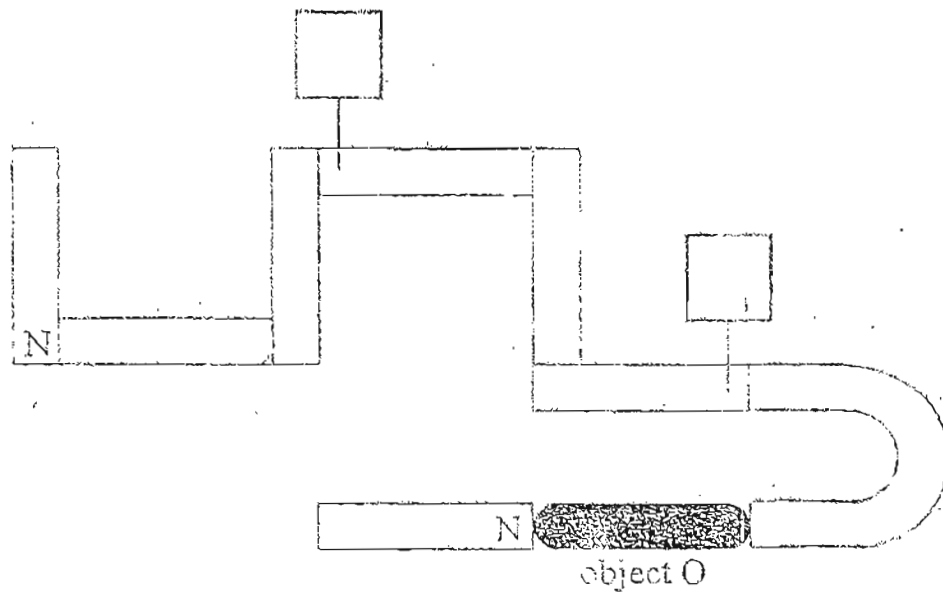


41. (a) A person has injured his brain.
Which part of his skeletal system is damaged? (1m)

- (b) Name the part of the skeletal system that protects our heart and lungs. (1m)

42. Study the arrangement of the magnets below.

- (a) Write N (North) or S (South) in the two boxes. (2m)



- (b) Object O is attracted to the two magnets.
What can Object O be? Put a tick (✓) in the correct box below. (1m)

magnet	steel bottle cap	ice-cream stick
<input type="checkbox"/>	<input type="checkbox"/>	<input type="checkbox"/>

For Questions 43 to 46, please refer to Booklet K.

End of Paper

