

SINGAPORE CHINESE GIRLS' SCHOOL (PRIMARY)

FIRST SEMESTRAL ASSESSMENT 2017

NAME: _____ ()

DATE: 4 MAY 2017

CLASS: PRIMARY 3 SY / C / G / SE / P

Parent's Signature:

**SCIENCE
BOOKLET A**

15 questions

30 marks

Total time for Booklets A & B: 1 h

DO NOT OPEN THIS BOOKLET UNTIL YOU ARE TOLD TO DO SO.

FOLLOW ALL INSTRUCTIONS CAREFULLY.

Part I (30 marks)

For each question from 1 to 30, four options are given. One of them is the correct answer. Make your choice (1, 2, 3 or 4). **Shade the correct oval (1, 2, 3 or 4) on the Optical Answer Sheet.**

1. Peter observed the following object for a week.

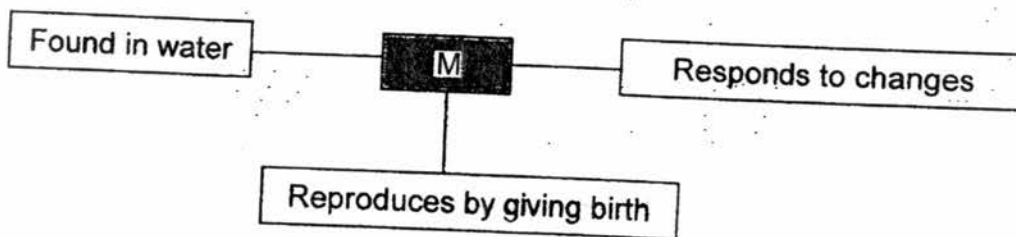


Which of the following observations tell him that the object is a non-living thing?

- A: It wags its tail.
- B: It does not take in water.
- C: It has 2 eyes and four legs.

- 1) B only
- 2) C only
- 3) A and C only
- 4) B and C only

2. Study the information below about Object M.



Which of the following could Object M be?

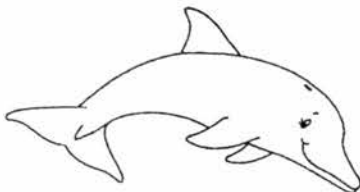
1)



3)



2)



4)



3. Look at the 2 groups of things below.



How are the things in Group A different from those in Group B?

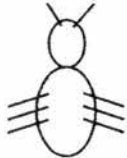
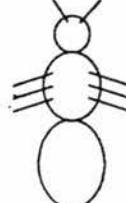
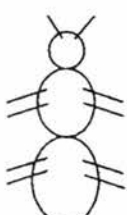
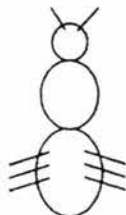
	Group A	Group B
A:	Not alive	Alive
B:	Respond to changes	Does not respond to changes
C:	Cannot reproduce	Can reproduce
D:	Do not need air, food and water	Need air, food and water

- | | |
|-----------------|--------------------|
| 1) A and D only | 3) A, C and D only |
| 2) B and D only | 4) B, C and D only |

4. Which one of the following pairs of animals has similar outer coverings?

- | | |
|-----------------------|-----------------------|
| 1) Ostrich and pigeon | 3) Turtle and eagle |
| 2) Guppy and whale | 4) Toad and crocodile |

5. Betty did 4 sketches of insects. Which of the following is the correct sketch?

- | | |
|--|---|
| 1)  | 3)  |
| 2)  | 4)  |

6. Study the table below.

Animal	Number of legs		Methods of reproduction	
	2	4	Lays eggs	Gives birth
X	✓		✓	
Y		✓		✓

What outer body coverings do Animals X and Y most likely have?

	Animal X	Animal Y
1)	Feathers	Shell
2)	Feathers	Hair
3)	Shell	Hair
4)	Shell	Feathers

7. Linda asks the following questions about an animal.
Which of the following questions will help her identify an amphibian?

- 1) Does it give birth to young alive?
- 2) How many legs does it have?
- 3) Does it breathe through lungs?
- 4) Can it breathe both on land and in water?

8. Sandy classified some animals into 2 groups, K and M.

Group K	Group M
Goldfish	Butterfly
Dolphin	Tiger
Prawn	Sheep

Which of the following pairs can be classified under Groups K and M correctly?

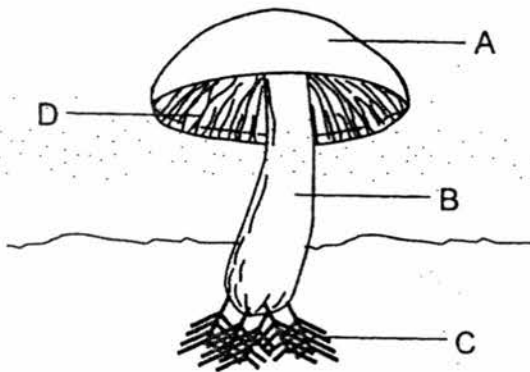
	Group K	Group M
1)	Lion	Grasshopper
2)	Anteater	Penguin
3)	Shark	Beetle
4)	Ostrich	Guppy

9. Which of the following are true about ferns?

- A) They can make food.
- B) They do not bear fruits.
- C) They reproduce by spores.
- D) They grow in dark and damp places.

- 1) A, B and C only
- 2) A, C and D only
- 3) B, C and D only
- 4) A, B, C and D

10. Look at the fungus shown below.



Which of the following contains the spores of the fungus?

- 1) A
- 2) B
- 3) C
- 4) D

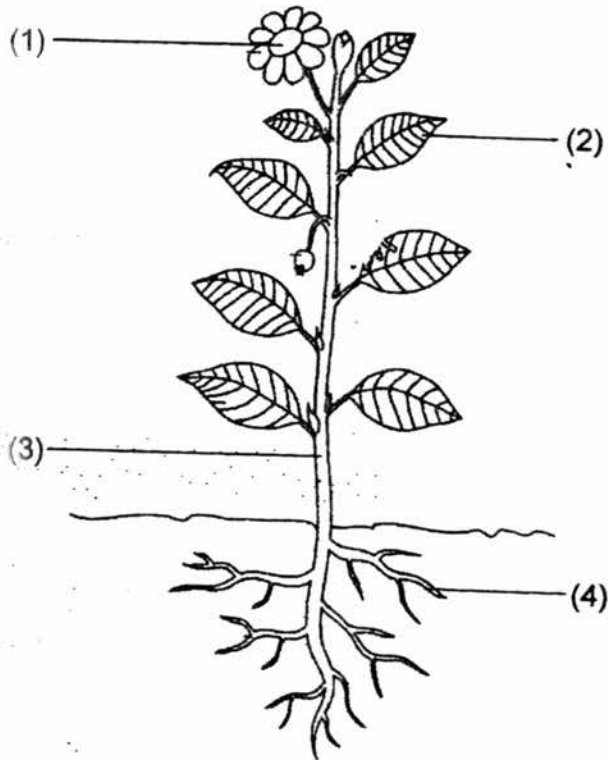
11. Which of the following would fungi feed on?

- A) Tree bark
- B) Leather boots
- C) Slice of cake
- D) Dead chicken

- 1) D only
- 2) C and D only
- 3) A, B and C only
- 4) A, B, C and D

12. Look at the picture of a plant below.

Which part, 1, 2, 3 or 4 will become a fruit?



13. Some materials have been classified in the table below.

Group W	Group X	Group Y
Glass	Cotton	Leather
Clay	Rubber	Milk
Sand	Wood	R

Which of the following could R be?

- 1) Silk
- 2) Iron
- 3) Paper
- 4) Plastic

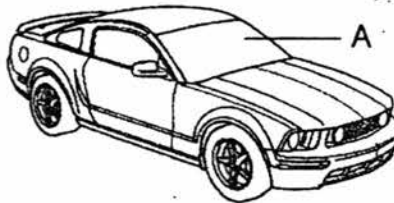
14. The picture below shows a pair of swimming goggles.



What are S and T likely to be made of?

	S	T
1)	Paper	Rubber
2)	Plastic	Rubber
3)	Glass	Metal
4)	Rubber	Plastic

15. Observe the picture of the car below.



Which material is the most suitable for making Part A of the car?

Materials	Properties		
	Floats on water	Breakable	Allows light to pass through
(1)		✓	✓
(2)		✓	
(3)	✓		
(4)	✓	✓	

End of Booklet A

SINGAPORE CHINESE GIRLS' SCHOOL (PRIMARY)

FIRST SEMESTRAL ASSESSMENT 2017

NAME: _____ ()

DATE: 4 MAY 2017

CLASS: PRIMARY 3 SY / C / G / SE / P

Parent's Signature:

SCIENCE

BOOKLET B

	Total Actual Marks	Total Possible Marks
Booklet A		30
Booklet B		20
Total		50

7 questions

20 marks

Total time for Booklets A & B: 1 h

DO NOT OPEN THIS BOOKLET UNTIL YOU ARE TOLD TO DO SO.

FOLLOW ALL INSTRUCTIONS CAREFULLY.

Name: _____ ()

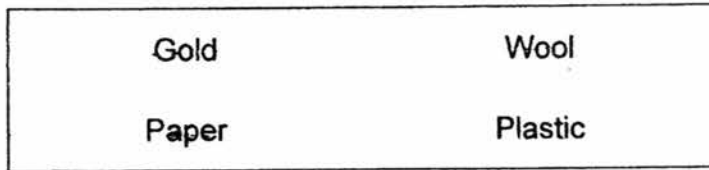
Date: 4 MAY 2017

Class: Primary 3 SY / C / G / SE / P

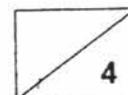
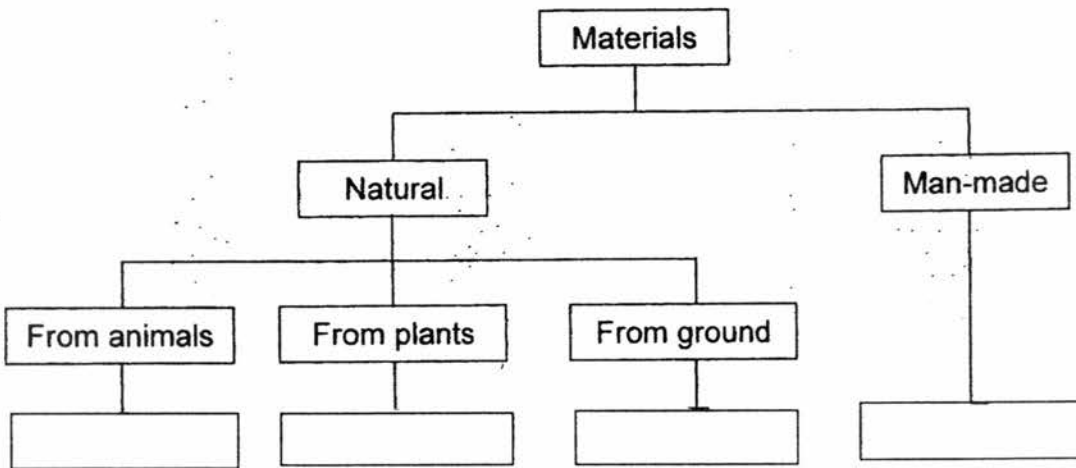
Part II (20 marks)

Answer all the following questions.

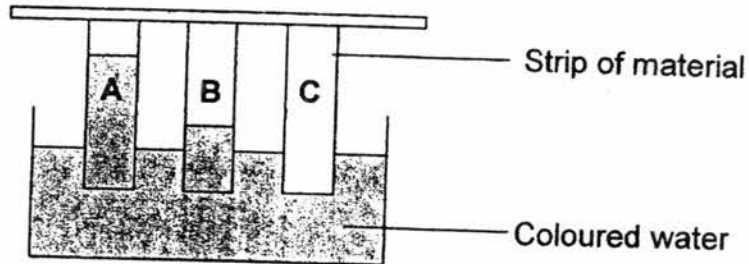
16. Look at the materials listed in the box below.



Classify these materials into the correct group in the classification chart shown below. [4]



17. Kris has 3 different materials, A, B and C. She cuts a strip of equal size from each material and places one end of each strip into a container of coloured water. The diagram below shows the results after 20 minutes.

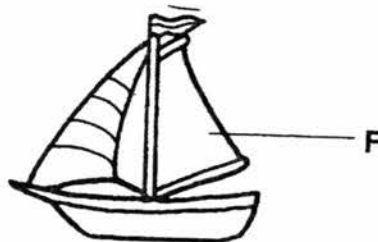


- a) Which material absorbed the most water? [1]

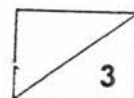
- b) Which material, A, B or C, is the most suitable for making Part Z of the umbrella? [1]



- c) Study the picture below.

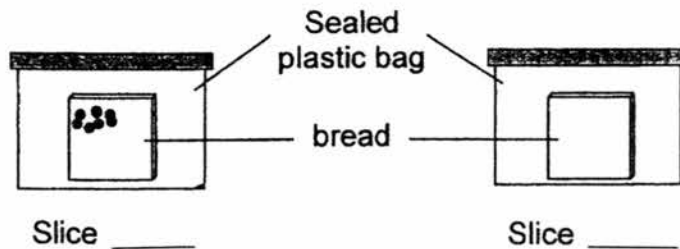


- Explain why Material C is the best choice for making part F? [1]



18. Cindy cut 2 slices of bread from the same loaf. Slice A is toasted while Slice B is sprinkled with water. They are then placed in a sealed plastic bag and put on a table for 5 days.

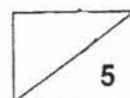
Below are the results which Cindy observed after 5 days.



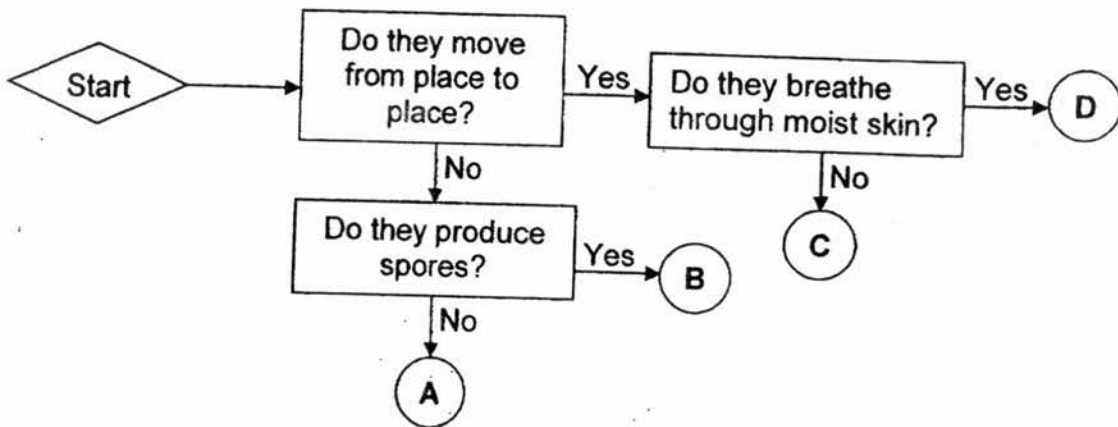
- a) **Label** the above diagrams 'A' and 'B' to identify which piece of bread was toasted and which was sprinkled with water. [1]
- b) What are the black dots which Cindy observed? [1]
-
- c) State what else Cindy can do to prevent the black dots from appearing on the bread after 5 days. [1]
-

19. Read the following statements about Bacteria. Tick 'True' for true statements and 'False' for false statements. [2]

	Statements	True	False
a)	All bacteria cause disease.		
b)	Bacteria can be observed using a microscope.		
c)	Bacteria can only be found on land.		
d)	Bacteria need air, food and water to survive.		



20. Study the flowchart below carefully.

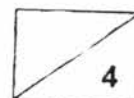


a) Based on the above chart, describe the characteristics of living thing C. [1]

b) Based on the above chart, state a difference between living things A and B. [1]

c) Based on the above chart, fill in the boxes by writing A, B, C and D for each of the living things below. [2]

Rose plant	
Grasshopper	
Moss	
Frog	





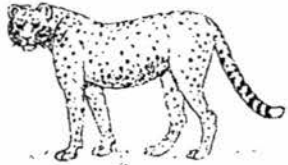

21. Isa was shown the 2 objects below. He then wrote what he found out about the objects below.



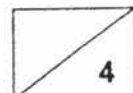
However, what he wrote had some missing words. Help to complete it with suitable words. [2]

Both objects are non-living things. However, the wooden bench was made from things that were _____ while the computer was made from things that were _____.

22. Circle the correct method of breathing for each animal. [2]

a) 	c) 
gills / lungs / skin	gills / lungs / skin
b) 	d) 
gills / lungs / skin	gills / lungs / skin

End of Booklet B



B - 7

EXAM PAPER 2017

LEVEL : PRIMARY 3
SCHOOL : SCGS
SUBJECT : SCIENCE
TERM : SA1

Booklet A

Q1	Q2	Q3	Q4	Q5	Q6	Q7	Q8	Q9	Q10	Q11	Q12	Q13	Q14	Q15
1	2	3	1	3	2	4	3	1	4	4	1	1	2	3

Booklet B

Q16 Wool, Paper, Gold, Plastic

Q17 (a) Material A
(b) Material C
(c) Material C is waterproof

Q18 (a) B, A
(b) Bread mould
(c) She can put the bread in the fridge.

Q19 (a) False
(b) True
(c) False
(d) True

Q20 (a) C can move place to place and does not breathe through moist skin.
(b) B can produce spores but A cannot produce spores.
(c) A, C, B, D

Q21. once alive & never alive

Q22a) lungs b) lungs c) gills d) lungs

1
END

