

TAO NAN SCHOOL

PRIMARY 3 SCIENCE MID-YEAR EXAMINATION 2011

Name : _____ () Date : 12 May 2011

Class : P3 _____

Time : 8:00 a.m. – 9.15 a.m.

Booklet A

INSTRUCTIONS TO CANDIDATES

Do not open this booklet until you are told to do so.

Follow all instructions carefully.

Answer all questions.

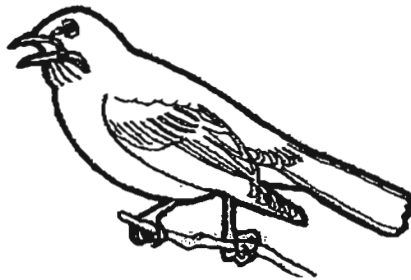
	Score	Marks
Section A		40
Section B		30
Total		70

Parent's Signature : _____

Section A (20 x 2 marks)

For each question, choose the most suitable answer and shade its corresponding oval (1, 2, 3 or 4) in the optical response sheet.

1)



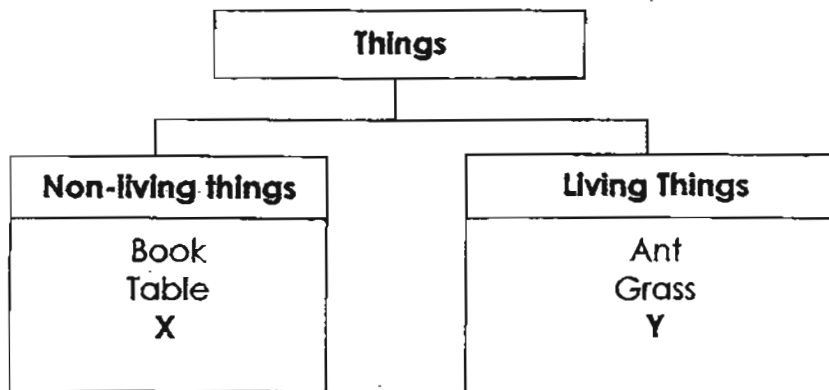
What are the basic needs of the organism above?

- (1) It needs air only.
- (2) It needs air and food only.
- (3) It needs air and water only.
- (4) It needs air, food and water.

2) After playing a ball game in the field on a hot afternoon, Jason started to perspire. What does this show about living things?

- (1) Living things grow and reproduce.
- (2) Living things need water and food.
- (3) Living things can move around on their own.
- (4) Living things respond to changes around them.

3) Sue grouped some things according to the classification chart below.



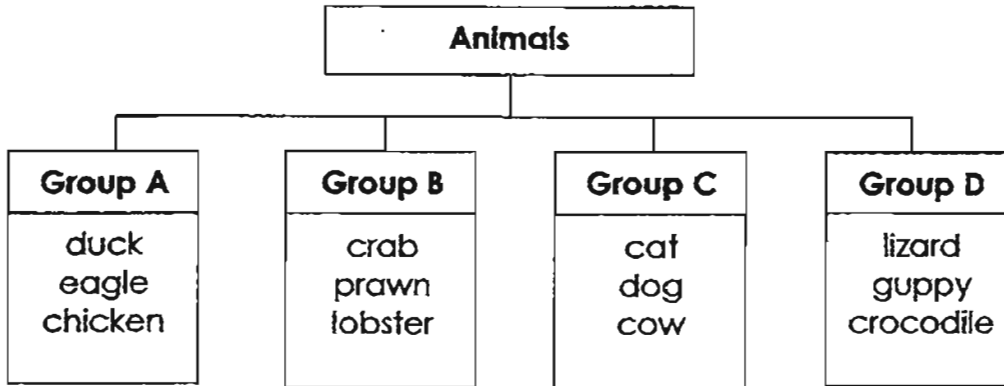
What could X and Y be?

	X	Y
①	Soil	Sand
②	Dried Leaf	Giraffe
③	Emu	Morning Glory Plant
④	Venus flytrap	Car

4) Which of the following is **true**?

- (1) All plants have flowers.
- (2) All plants make their own food.
- (3) All plants have only green-coloured leaves.
- (4) All plants have roots that grow only towards water.

5) Study the classification chart below.



How are the animals above classified?

- (1) The ways they move
- (2) The ways they reproduce
- (3) The type of food they eat
- (4) Their outer body covering

6) Joe caught an organism. He recorded his observations in the box below.

It has feelers.
It has six legs.
It has three main body parts.
It has two pairs of wings.

Which of the following could he be describing?

- (1) bird
- (2) lizard
- (3) spider
- (4) dragonfly

7) Study the pictures of the animals below. Which of the following is **true** about the animals?



Platypus



Zebra



Rabbit

- (1) They have long tails.
- (2) They have flat beaks.
- (3) They have webbed feet.
- (4) They have an outer body covering of hair.

8) Which of the following about the mushroom and the bracket fungi is/are **true**?

- (A) Both are living things.
- B: Both are green plants.
- (C) Both reproduce by spores.
- D: Both make their own food.

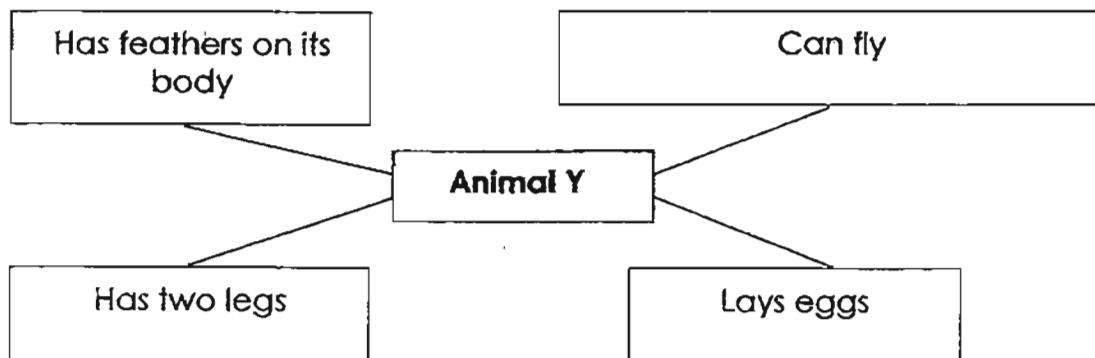
- (1) A only
- (2) A and C only
- (3) A, B and C only
- (4) A, B, C and D

9) Why does the plant below twine round the trunk of a tree to reach for sunlight?



- (1) It has a weak stem.
- (2) It has smooth-edged leaves.
- (3) It needs water to make food.
- (4) It depends on the tree for food.

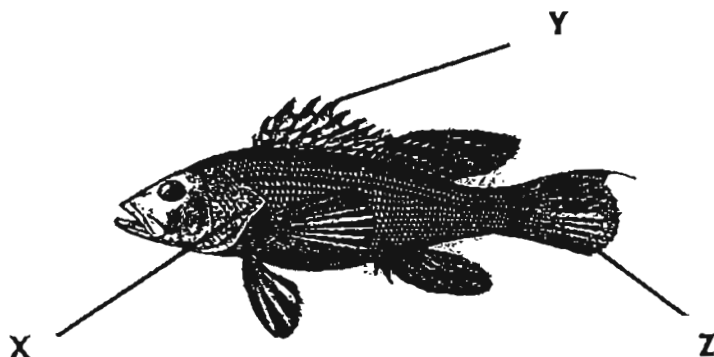
10) The diagram below shows the characteristics of **Animal Y**.



What can **Animal Y** be?

- (1) Bat
- (2) Sparrow
- (3) Goldfish
- (4) Grasshopper

11) The diagram below shows a fish. What can X, Y and Z be?



	X	Y	Z
(1)	gill cover	fin	tail
(2)	gill cover	tail	fin
(3)	fin	tail	gill cover
(4)	tail	fin	gill cover

12) Four pupils were asked to give the characteristics of bacteria.

Lina: They come in different shapes and sizes.

Kim: They do not respond to changes.

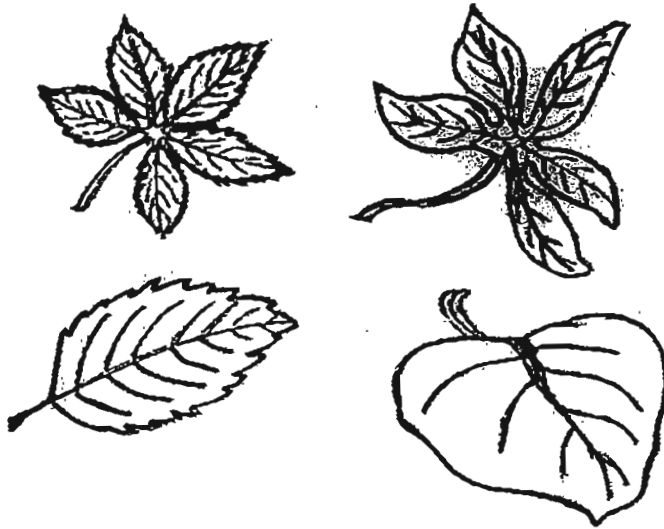
Bob: They can only be seen under a microscope.

Amy: They feed on other organisms.

Who made the **correct** statements?

- (1) Lina and Kim
- (2) Kim and Bob
- (3) Lina, Kim and Bob
- (4) Lina, Bob and Amy

13) Study the leaves below.

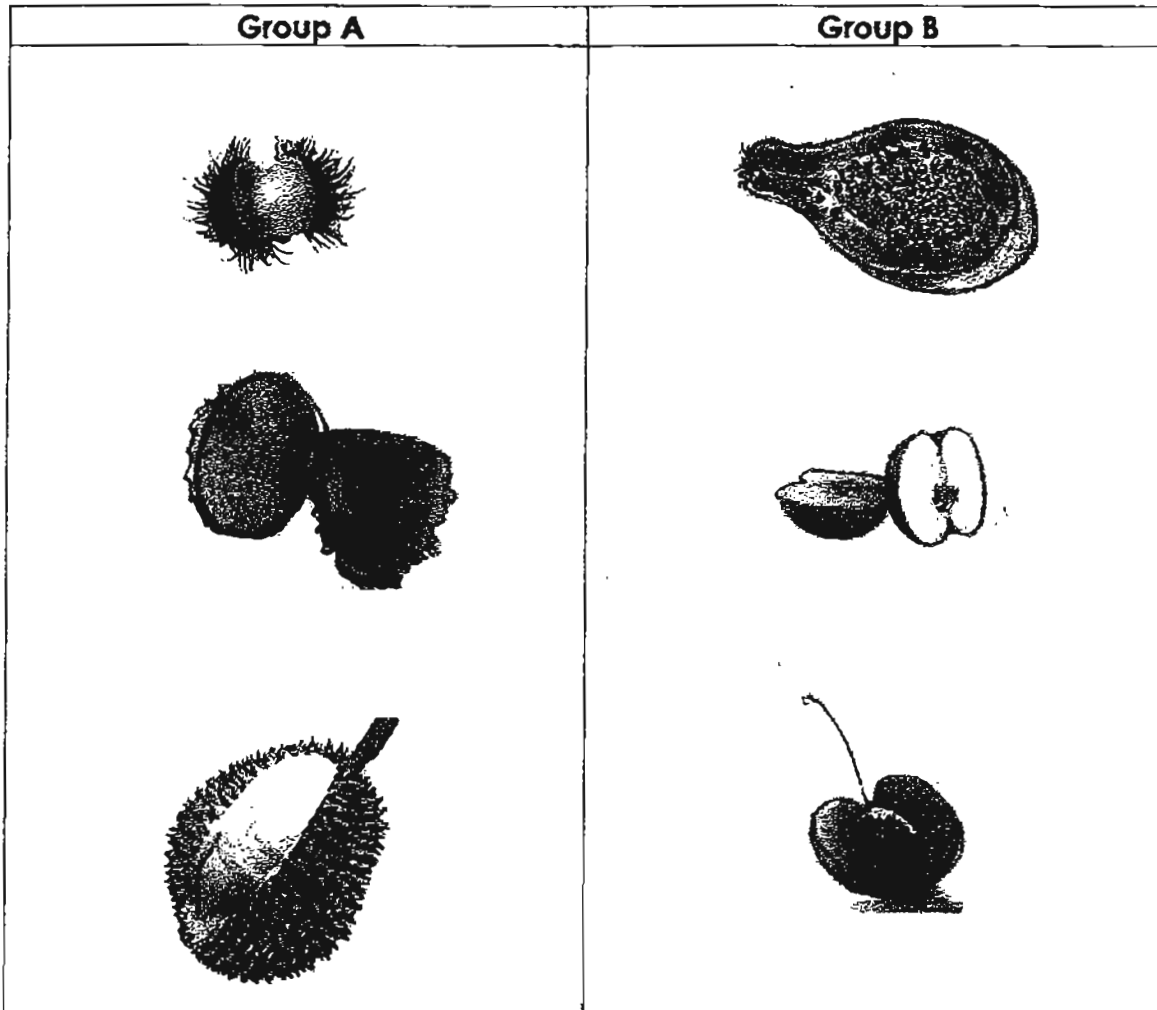


How can we classify the leaves into 2 or more groups?

- A: According to the vein pattern
- B: According to the edge of the leaves
- C: According to the shape of the leaves

- ① A and B only
- ② A and C only
- ③ B and C only
- ④ A, B and C

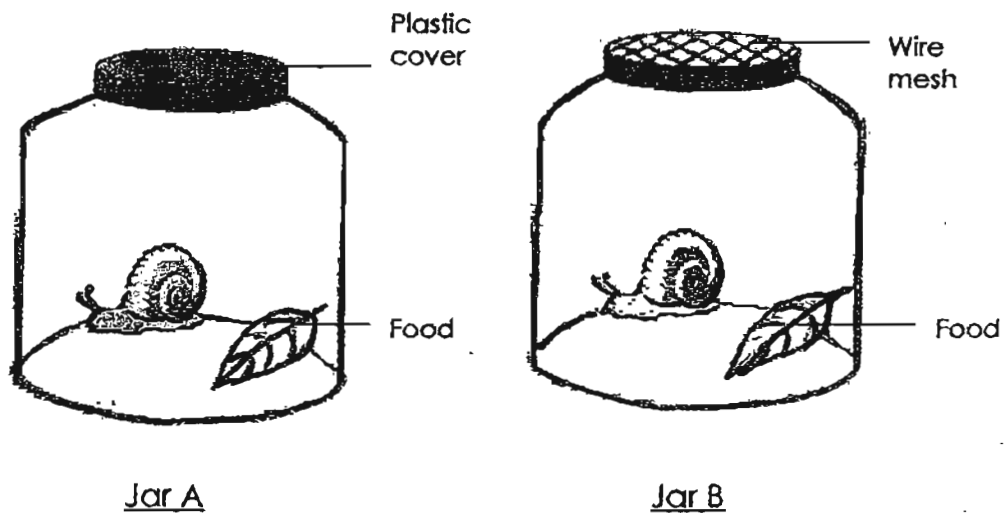
14) Look at the two groups of fruits below.



Which of the following is **correct**?

- (1) A mango can be placed in Group A because it has one seed.
- (2) A mango can be placed in Group B because it has smooth skin.
- (3) A watermelon can be placed in Group A because it has rough skin.
- (4) A watermelon can be placed in Group B because it has many seeds.

15) Alan placed two snails in two identical jars as shown below. They were given the same amount of **water** and **food** to last for a week. He left both jars on his study table.



What was Alan trying to find out with this experiment?

- ① To find out whether a snail needs air to survive.
- ② To find out whether a snail needs food to survive.
- ③ To find out whether a snail needs water to survive.
- ④ To find out whether a snail needs food and water to survive.

16) Which of the following materials is most suitable for making a raincoat?



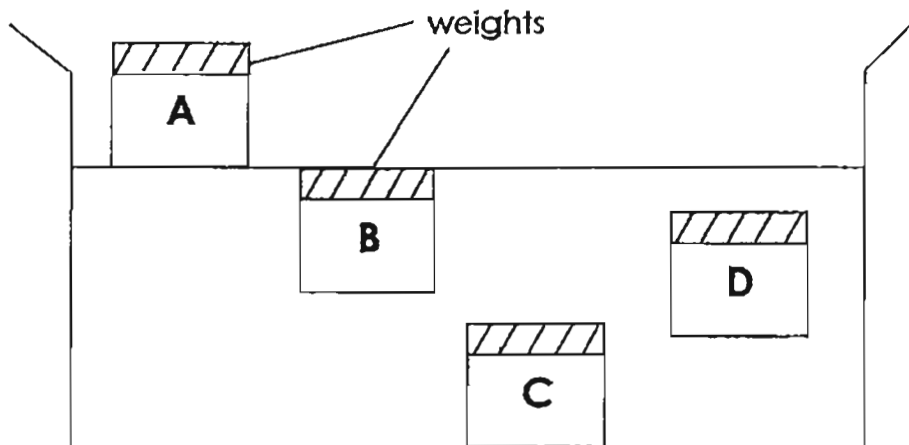
Materials			
Heavy		Light	
Waterproof	Non-waterproof	Waterproof	Non-waterproof
Material A	Material B	Material C	Material D

- (1) Material A
- (2) Material B
- (3) Material C
- (4) Material D

17) Mrs Law is organising a birthday party for her three-year-old son. She needs cups suitable for active boys. Which of the following is most suitable?

- (1) Clay cup
- (2) Glass cup
- (3) Plastic cup
- (4) Ceramic cup

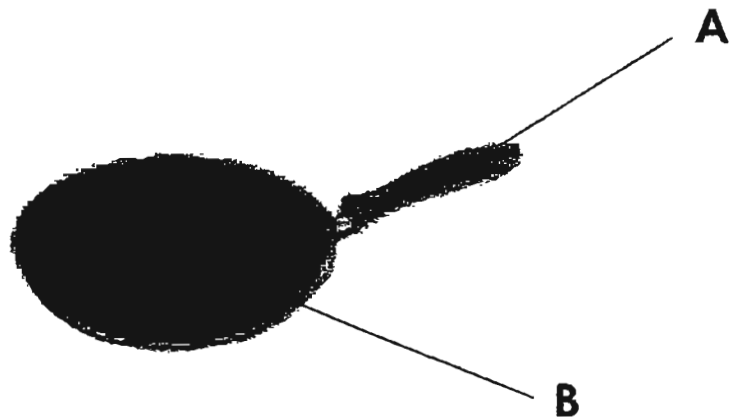
18) The diagram below shows what happens when 4 objects of similar size but different materials, A, B, C and D, are placed in a tank of water. (The weights are identical)



Bruce wants to make a toy boat for his Science project. He should use the material similar to one of the objects above. Which object is it?

- A
- B
- C
- D

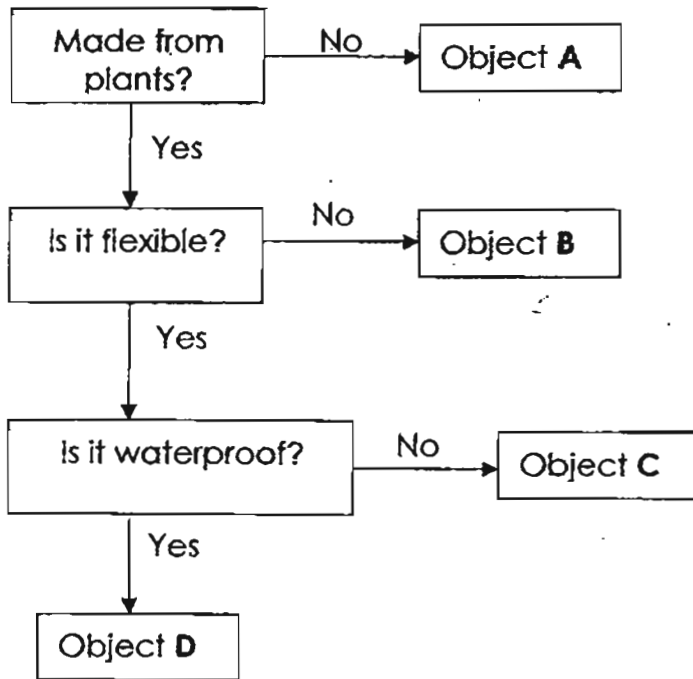
19) Parts A and B of a frying pan are made of different materials.



Which of the following could be used to make the parts, A and B?

	A	B
①	metal	wood
②	plastic	metal
③	wood	rubber
④	glass	plastic

20) Study the flow chart below.



What can the objects, A, B, C and D, be?

	Object A	Object B	Object C	Object D
(1)	rubber duck	handkerchief	wooden stick	rubber hose
(2)	plastic ruler	raincoat	silk shawl	rubber band
(3)	pen knife	blanket	paper	plastic gloves
(4)	steel lock	chair	cotton socks	eraser

TAO NAN SCHOOL

PRIMARY 3 SCIENCE MID-YEAR EXAMINATION 2011

Name : _____ () Date : 12 May 2011

Class : P3 _____

Time : 8.00 a.m. – 9.15 a.m.

Booklet B

INSTRUCTIONS TO CANDIDATES

Do not open this booklet until you are told to do so.

Follow all instructions carefully.

Answer all questions.

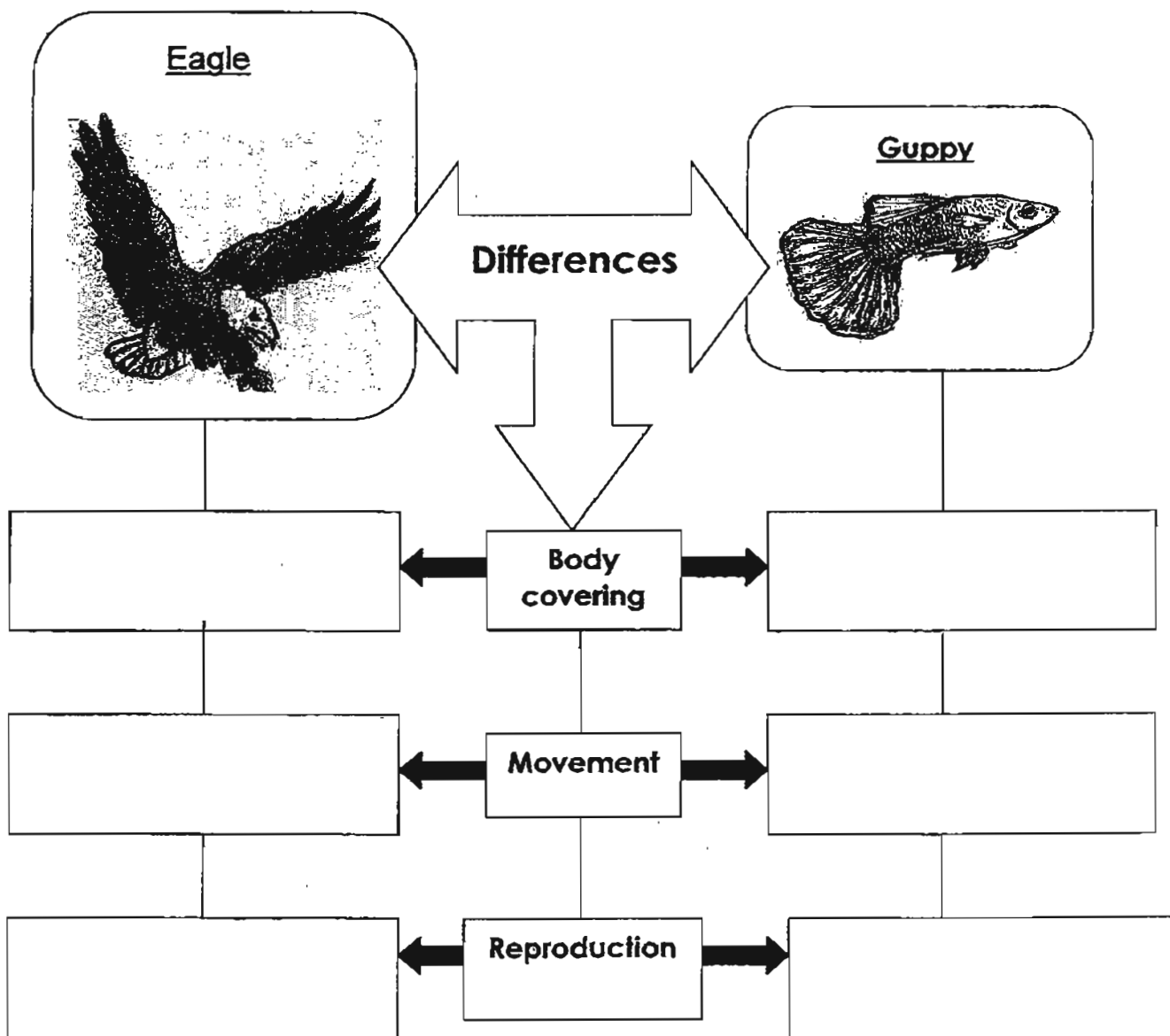
	Score	Marks
Section B		30

Parent's Signature : _____

Section B (30 marks)

Write your answers in the spaces provided.

21. The pictures below show an eagle and a guppy. How are they different from each other? (3 m)



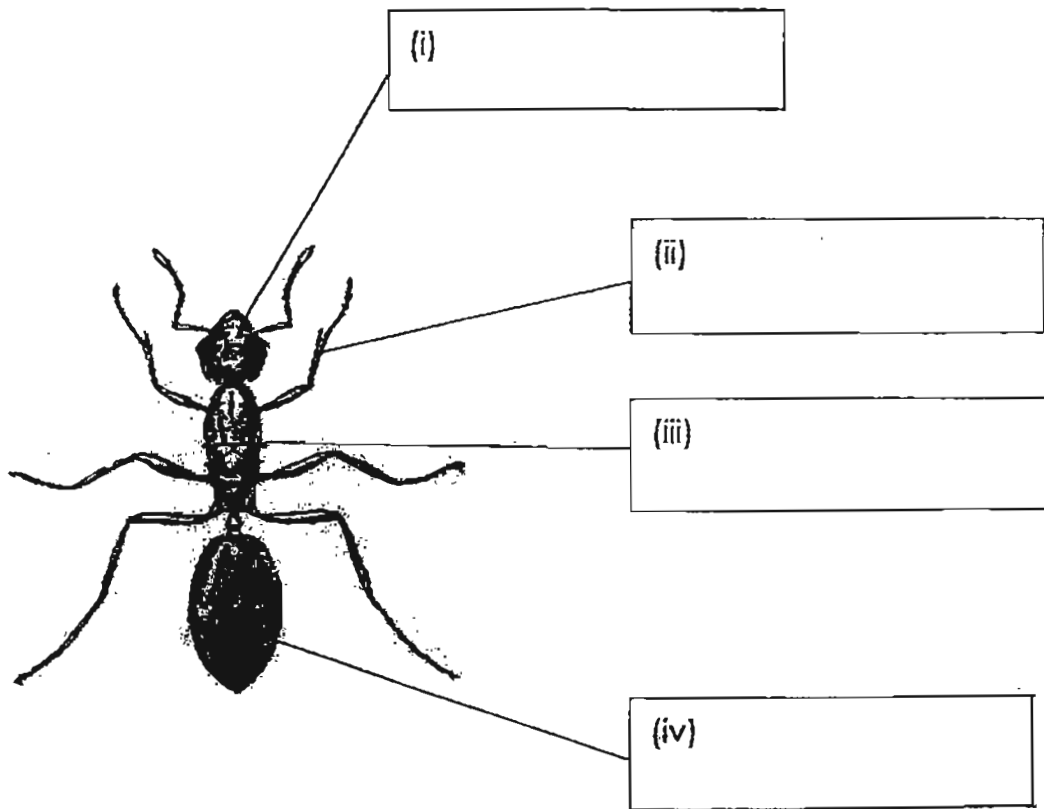
22. Classify the flowers below into two groups in the table provided. (3 m)

Rose	Jasmine	Sunflower
Hibiscus	Frangipani	Ixora

Flowers	
Grow singly	Grow in clusters

23. The picture below shows an insect.

(a) Identify the **abdomen, thorax, head** and **leg** of the insect. (2m)



(b) State one characteristic of the insect. (1m)

24. Tom had two identical slices of bread. He toasted one of them and sprinkled water on the other. Then he put each of them, **Bread A** and **Bread B**, in a warm, dark corner for 5 days. He recorded his observations in the table below.

Day	Bread A	Bread B
1	no change	no change
3	no change	no change
4	a few dark spots on the bread	no change
5	more dark spots on the bread	no change

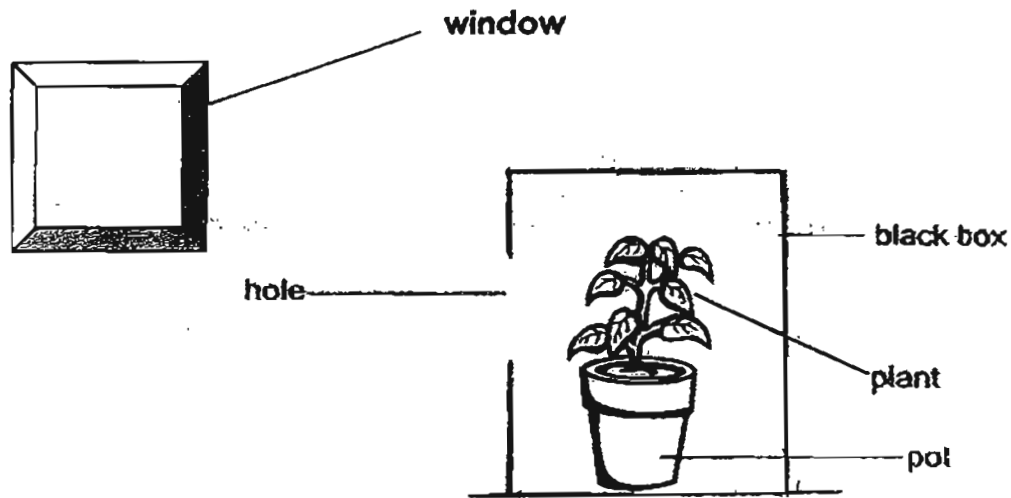
(a) What were the 'dark spots'? (1 m)

(b) Name the condition present which caused the growth of the 'dark spots'. (1 m)

(c) What characteristic of living things does your answer in (b) show?

(1 m)

25. Sue put a plant inside a black box with a hole. She watered the plant daily and placed the set-up near an open window.

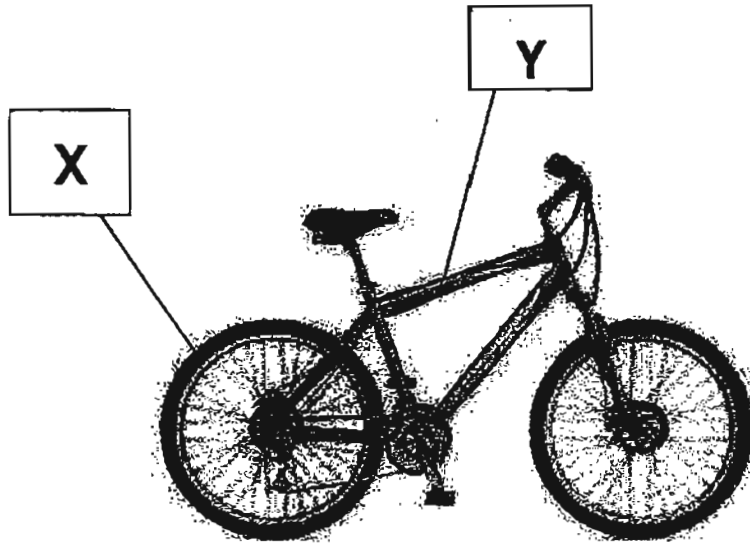


(a) What would happen to the leaves and stem of the plant after a week? (1m)

(b) Explain your answer in (a). (1m)

(c) Name another characteristic that shows that plants are living things. (1m)

26. The diagram below shows a bicycle.



(a) What materials are the parts, X and Y, made of? (1 m)

Material for X: _____

Material for Y: _____

(b) State the property of the material which makes it suitable for the part, Y. Explain the choice of using that material. (2 m)

27. Study the table below.

Material	Scratched easily by a fingernail?	Scratched easily by a copper coin?	Scratched easily by an iron nail?
A	No	Yes	Yes
B	Yes	Yes	Yes
C	No	No	Yes
D	No	No	No

(a) Arrange the materials according to their hardness. Begin with the hardest. (1 m)

_____ / _____ / _____ / _____
hardest

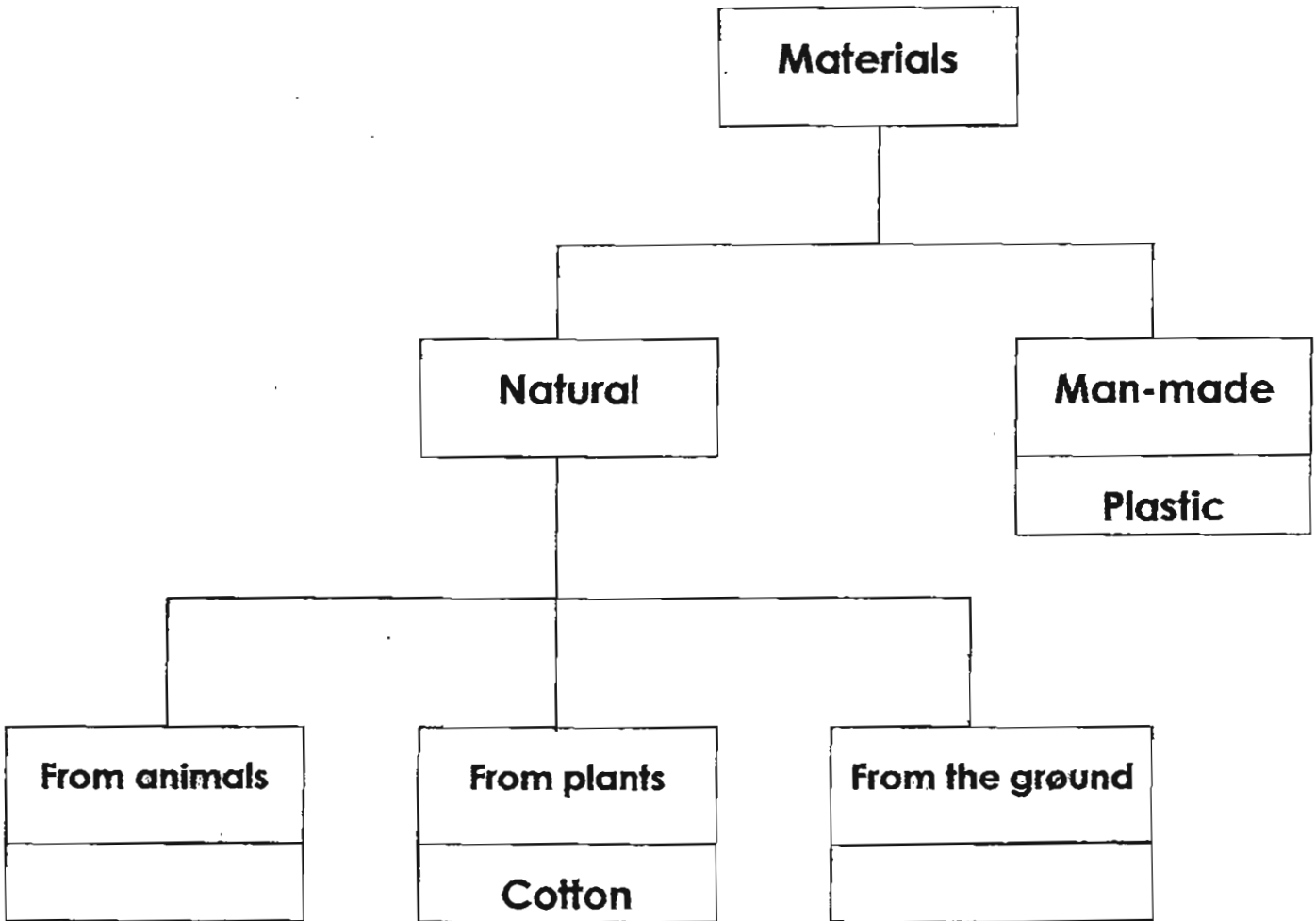
(b) What can the material, B, be? Explain your answer. (2 m)

(c) Another material, E, is even harder than all the above materials. Complete the table below by filling in 'yes' or 'no'. (1 m)

Material	Scratched easily by a fingernail?	Scratched easily by a copper coin?	Scratched easily by an iron nail?
E			

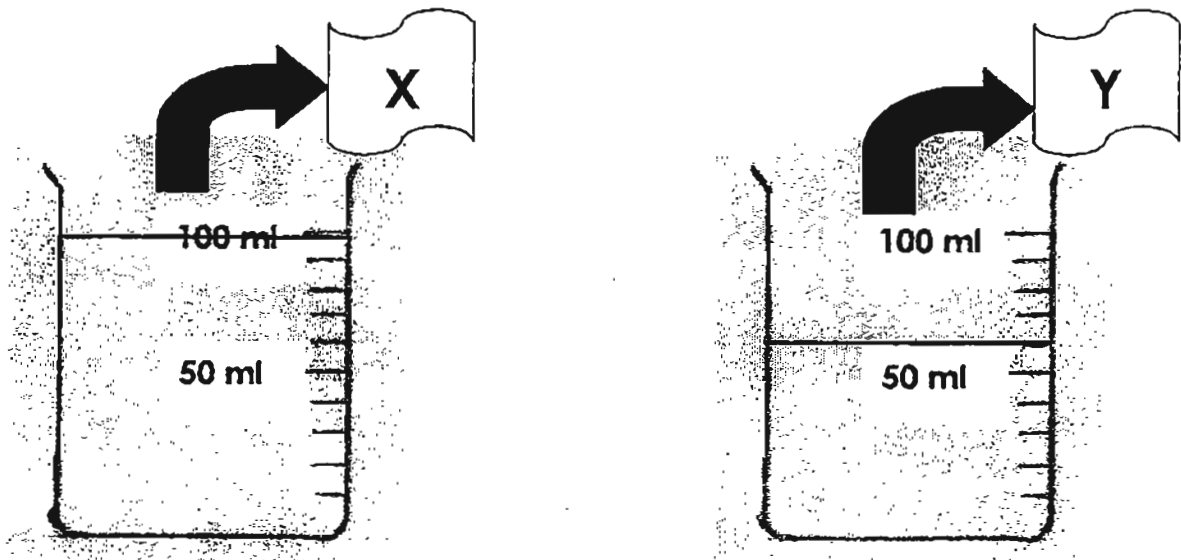
28. Study the classification chart below.

(a) Classify 'Iron' and 'Silk' in the classification chart. (1m)



(b) Based on the classification chart above, what are the characteristics of cotton? (1 m)

29. Darren conducted an experiment to find out which material absorbs more water. He had two pieces of materials, X and Y. He placed them into 2 identical beakers each containing 100 ml of water. After 5 minutes, the 2 pieces of materials were removed and the amount of water left was measured as shown in the diagrams below.



(a) Based on the observation, which material, X or Y, absorbs more water? (1m)

(b) Which material, X or Y, is more suitable for making towels? (1m)

(c) Name a possible material for X. (1m)

30. Write 'T' if the statement is true or 'F' if the statement is false in the boxes provided. (3 m)

Statement	T/F
(a) All animals have an outer body covering of hair.	
(b) Penguins have fur on them so they are not birds.	
(c) Bacteria respond to changes in their surroundings.	
(d) A mudskipper is a fish and it has gills for breathing.	
(e) Grass is a flowering plant.	
(f) Our clothes can only be made from plants.	

The End

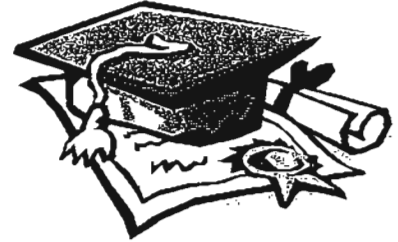


ANSWER SHEET

EXAM PAPER 2011

SCHOOL : TAO NAN
SUBJECT : PRIMARY 3 SCIENCE

TERM : SA 1



Booklet A

Q1	Q2	Q3	Q4	Q5	Q6	Q7	Q8	Q9	Q10	Q11	Q12	Q13	Q14	Q15	Q16	Q17
4	4	2	2	4	4	4	2	1	2	1	4	3	2	1	3	3

Q18	Q19	Q20
1	2	4

Booklet B

21)

Feathers	Body Covering	Scales
Fly	Movement	Swim
Lay eggs	Reproduction	Give birth to young live

22)

Flowers	
Grow singly	Grow in cluster
Rose	Jasmine
Sunflower	Frangipani
Hibiscus	Ixora

23a) i) head (ii) leg (iii) thorax (iv) abdomen

b) It has three body parts.

24a) Mould

b) Water

c) Living things need water to survive.

25 a) They will grow out of the hole and towards the window.

b) the plant needs more sunlight to make food.

c) They respond to changes.

Page 2

26 a) X : Rubber (b) Y : Metal

b) It is hard and strong . It will not break easily.

27 a) P . C. A .B

b) Material B can be rubber . It is soft.

c) no .no .no

28 a) From animal : Silk

From the ground : Iron

b) Cotton is a natural material from plants.

29 a) Material Y absorbs more water.

b) Material Y

c) Rubber

30 a) F (b) F (c) T (d) T (e) T (f) F

-- end paper ---