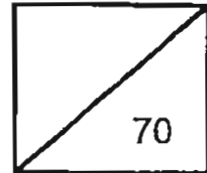




**Rosyth School**  
**Semestral Examination 1 for 2011**  
**SCIENCE**  
**Primary 3**



Name: \_\_\_\_\_

Total  
Marks:

Class: Pr 3 \_\_\_\_\_

Register No. \_\_\_\_\_

Duration: 1 h 30 min

Date: 12 May 2011

Parent's Signature: \_\_\_\_\_

---

## BOOKLET A

Instructions to Pupils:

1. Do not open the booklets until you are told to do so.
2. Follow all instructions carefully.
3. This paper consists of 2 booklets, Booklet A and Booklet B.
4. For questions 1 to 20 in Booklet A, shade the correct ovals on the Optical Answer Sheet (OAS) provided using a 2B pencil.
5. For questions 21 to 32, give your answers in the spaces given in the Booklet B.

	<b>Maximum</b>	<b>Marks Obtained</b>
<b>Booklet A</b>	<b>40 marks</b>	
<b>Booklet B</b>	<b>30 marks</b>	
<b>Total</b>	<b>70 marks</b>	

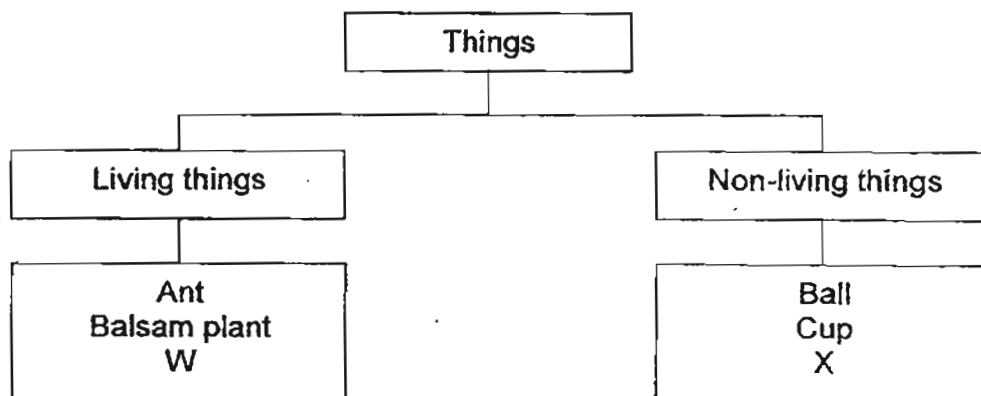
\* This booklet consists of 14 pages .

This paper is not to be reproduced in part or whole without the permission of the Principal.

**Part I (40 MARKS)**

For each question from 1 to 20, four options are given. One of them is the correct answer. Make your choice (1, 2, 3 or 4) and shade the correct ovals on the OAS.

1. Study the classification diagram below carefully.



Which of the following correctly represents W and X?

	W	X
(1)	Sun	Ruler
(2)	Car	Eraser
(3)	Cloud	Sand
(4)	Caterpillar	Stone

2. The table below shows some information about Jeremy from birth to the time when he is 8 years old.

Age (years)	Mass (in kg)
At birth	3
2	8
4	14
6	20
8	24

What information about Jeremy can we get directly from the table?

- (1) Jeremy becomes taller as he grows.
- (2) Jeremy becomes heavier as he grows.
- (3) Jeremy needs air, food and water to grow.
- (4) Jeremy responds to the changes around him.

3. The leaves of the plant shown below close when anyone touches them.



Which characteristic of living things is illustrated by the leaves?

- (1) Living things can reproduce.
- (2) Living things can move by themselves.
- (3) Living things need air, food and water to survive.
- (4) Living things can respond to changes around them.

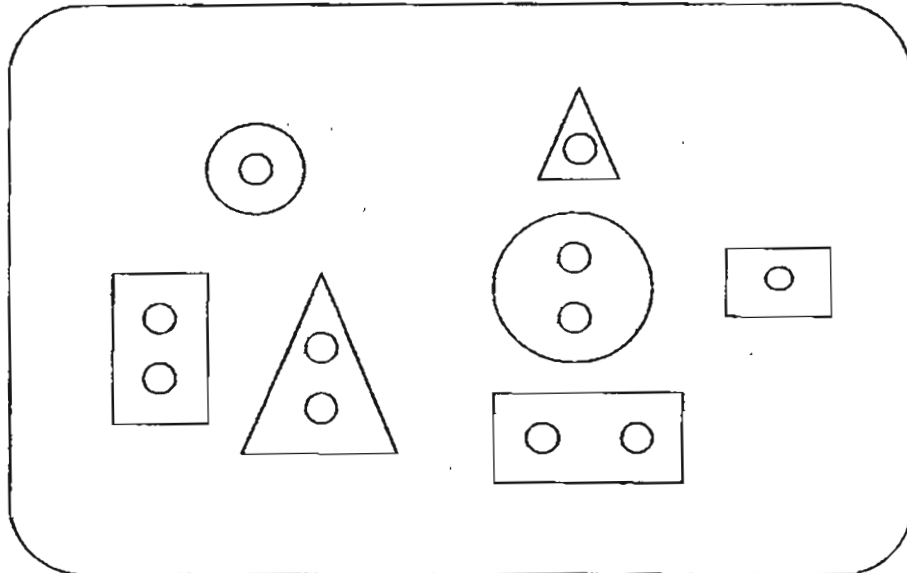
4. The table below shows the characteristics of four things.

	Can die	Can reproduce	Needs air, food and water
Dog	√	√	√
Clock	x	√	√
Television	x	x	x
Mango tree	√	√	√

Which of the following things in the table are correctly described?

- (1) Dog and television only.
- (2) Clock and television only.
- (3) Television and mango tree only.
- (4) Dog, television and mango tree only.

5. Simon has some buttons as shown below.



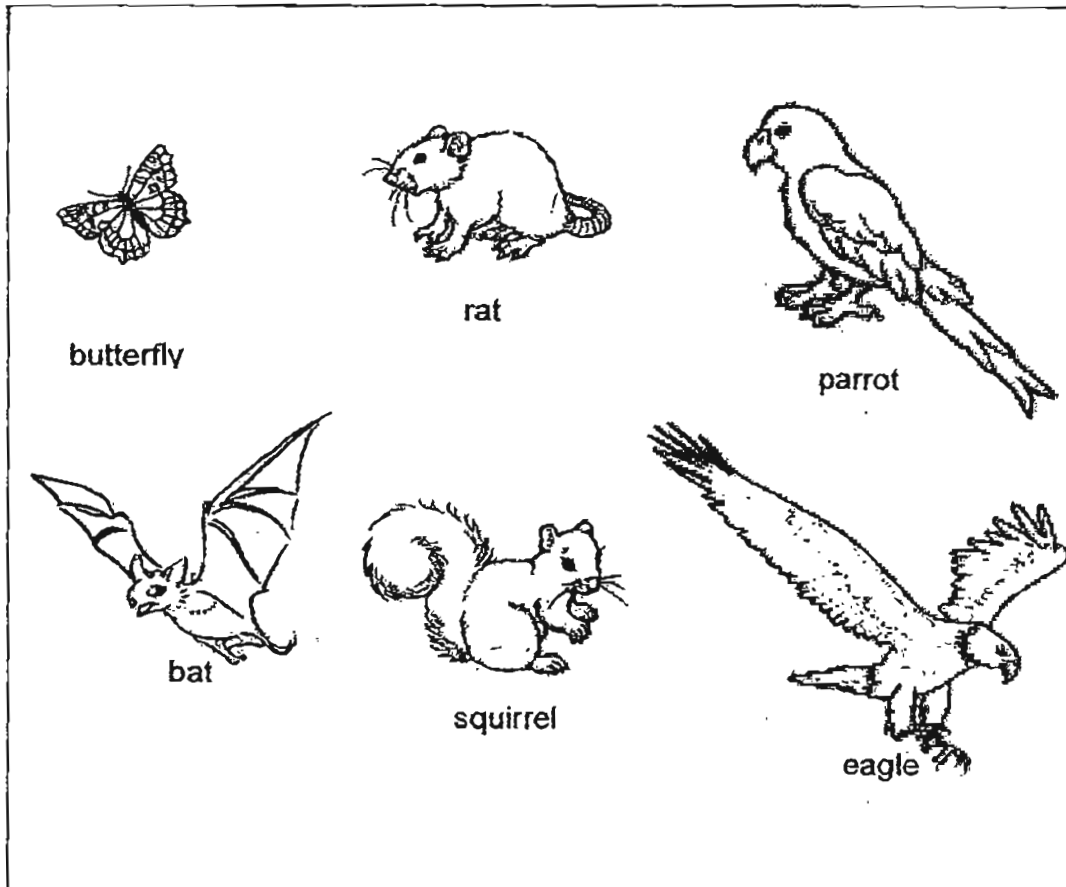
Based on the picture, which of the following ways can be used to classify the buttons?

- A: According to their size.
- B: According to their shape.
- C: According to their colour.
- D: According to the number of holes.

- (1) A and B only
- (3) A, B and D only

- (2) A and D only
- (4) B, C and D only

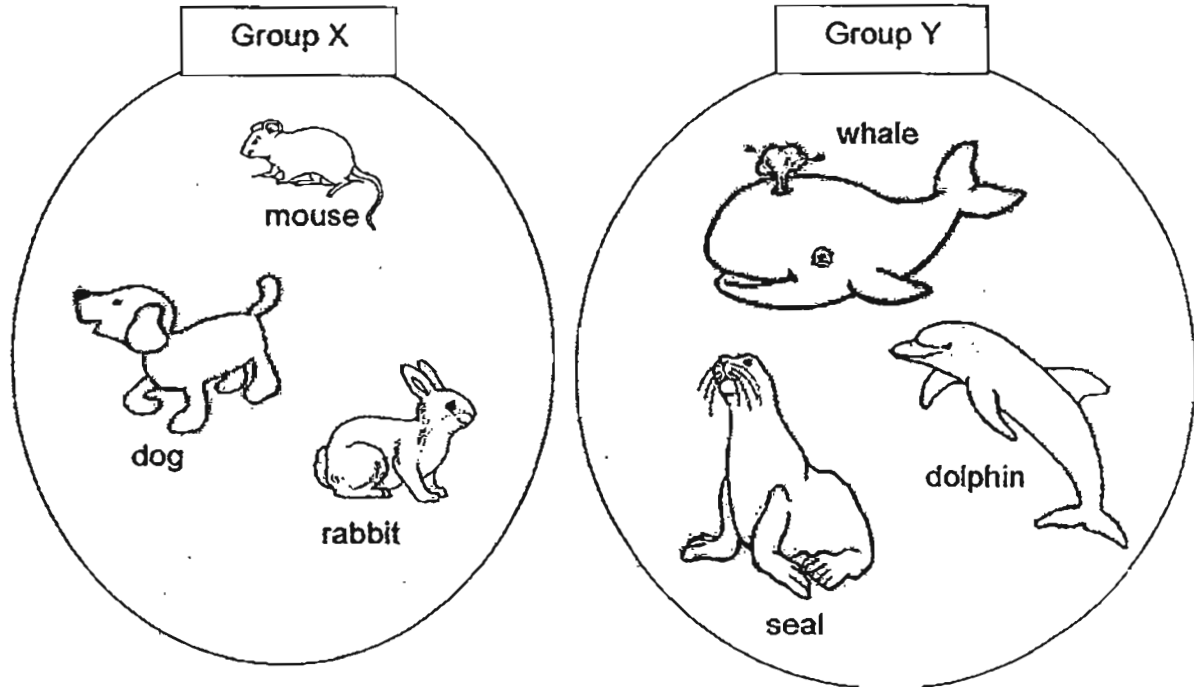
6. Mary wants to classify the animals shown below into 2 groups.



Which of the following headings below are most suitable for the 2 groups if she wants to have 3 animals in each group?

	Group 1	Group 2
(1)	Can fly	Cannot fly
(2)	Has 2 legs	Has more than 2 legs
(3)	Has a beak	Does not have a beak
(4)	Has hair as outer covering	Has feathers as outer covering

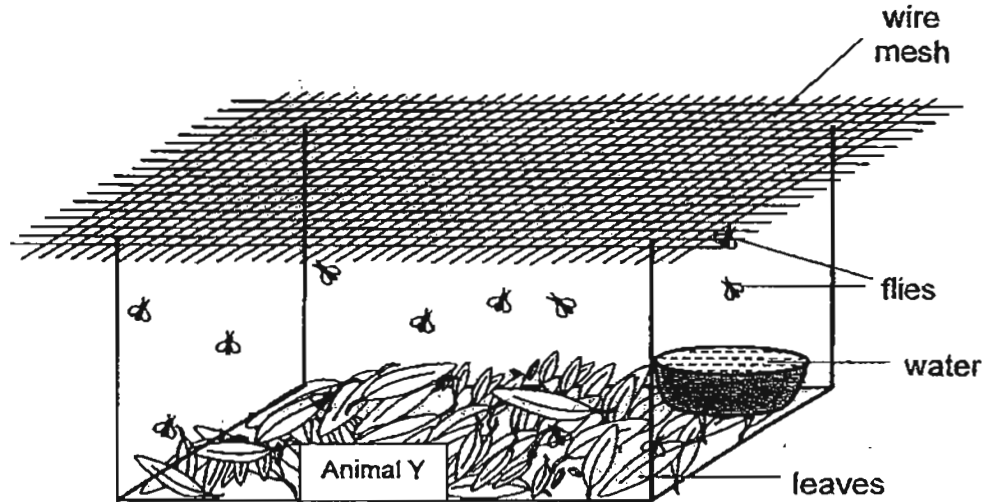
7. Study the pictures below.



How are the animals in Group X and Group Y classified?

- (1) According to their shape.
- (2) According to how they move.
- (3) According to their outer covering.
- (4) According to how they reproduce.

8. Jane put an animal, Animal Y, in a tank with some water, leaves and some flies. She covered the tank with some wire mesh to prevent the flies from flying away.



She recorded the amount of leaves and the number of flies left in the tank for the next 6 hours as shown in the table below.

	Amount of leaves (in grams)	Number of flies
Start	80	12
After 2 hours	80	9
After 4 hours	80	5
After 6 hours	80	3

Which of the following is best inferred about the eating habit of Animal Y?

- (1) It eats plants only.
- (2) It eats animals only.
- (3) It eats both plants and animals.
- (4) It does not eat both plants and animals.

9. Ahmad observed a cockroach and wrote down the following statements.



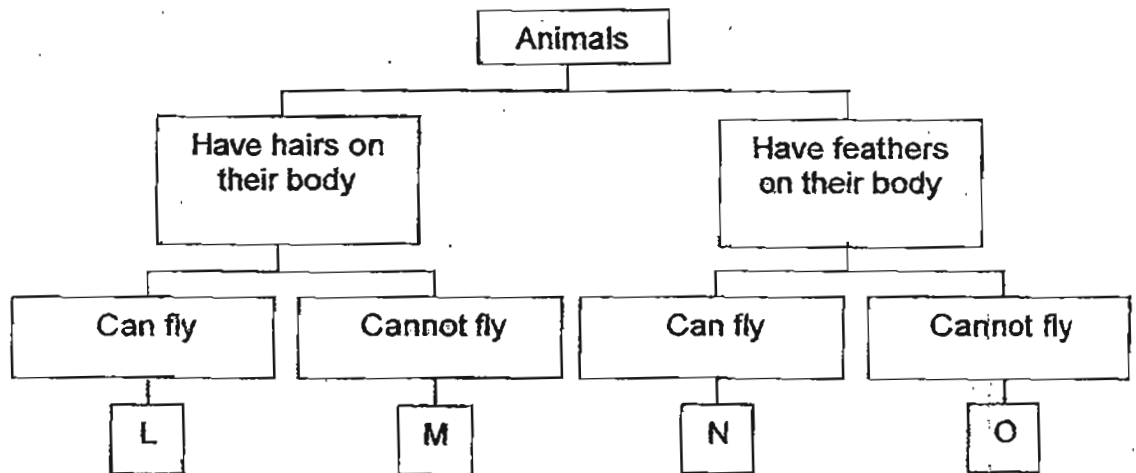
cockroach

- A: It has wings.
- B: It has six legs.
- C: It has three body parts.

Which statements tell him that the cockroach is an insect?

- (1) A and B only
- (2) A and C only
- (3) B and C only
- (4) A, B and C

10. Study the classification diagram below.

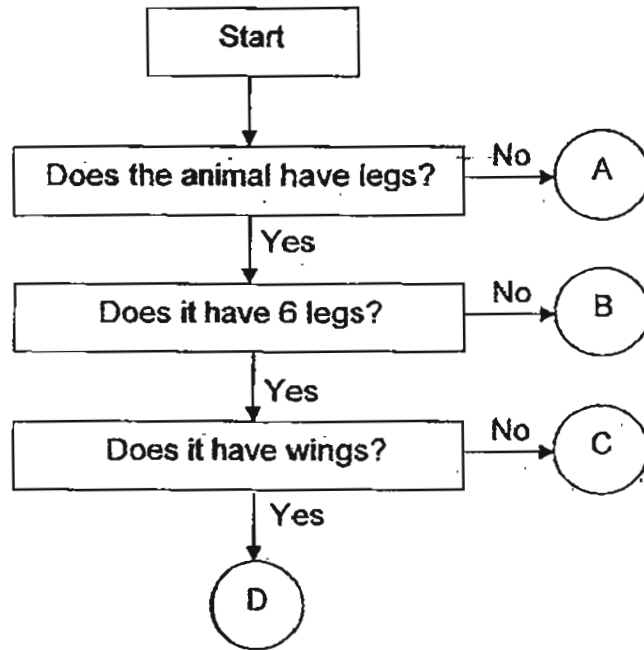


Which group of animals do both Animal N and Animal O belong to?

- (1) Birds
- (2) Fishes
- (3) Insects
- (4) Mammals



11. Study the flowchart below.



Which letter (A, B, C or D) best represents the animal shown below?



- (1) A
- (3) C

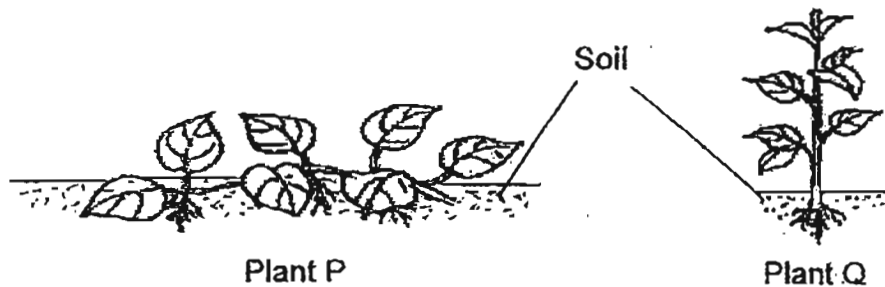
- (2) B
- (4) D

12. Sarah planted two young plants in two different pots as shown below.



She observed the plants two days later. The plant in Pot X grew healthily but the plant in Pot Y wilted. What does the experiment show?

- (1) Plants need air to stay alive.
  - (2) Plants need soil to stay alive.
  - (3) Plants need food to stay alive.
  - (4) Plants need water to stay alive.
13. The diagram shows Plant P and Plant Q.



Based on the observation, which one of the following is correct of Plant P and Plant Q?

- (1) Plant P can grow faster than Plant Q.
- (2) Plant P needs more water than Plant Q.
- (3) Plant P needs more sunlight than Plant Q.
- (4) Plant P needs support to grow upright but not Plant Q.

14. The diagram below shows the fruit of a plant.



Based on the diagram, which one of the following statements below can you best infer about the plant?

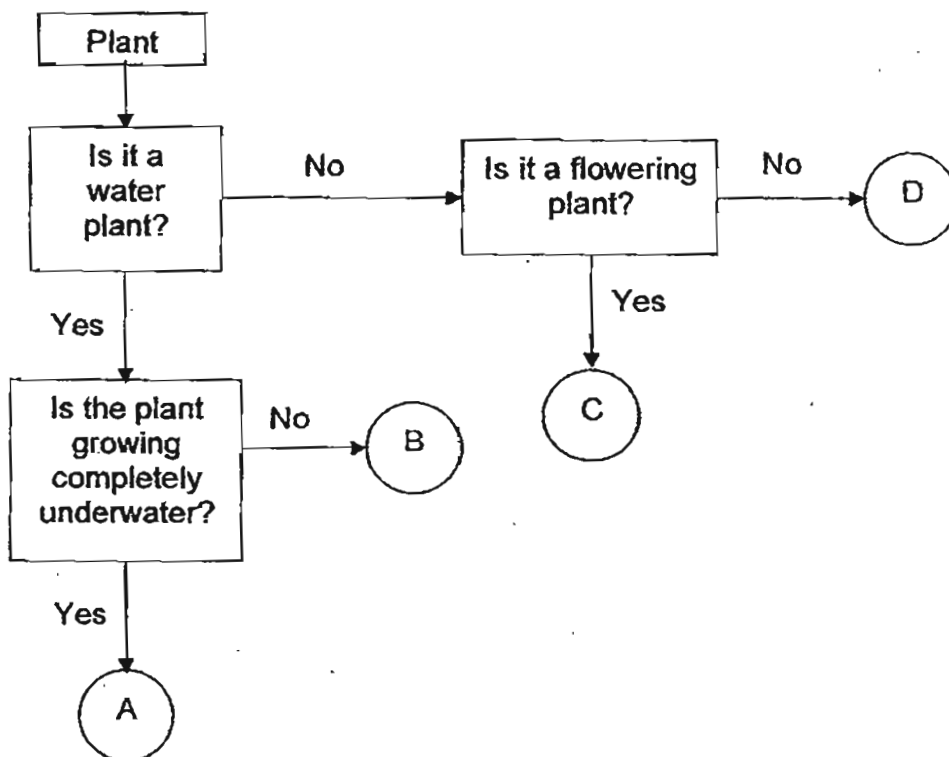
- (1) It is a very big plant.
  - (2) It has a strong stem.
  - (3) It is a flowering plant.
  - (4) It has poisonous leaves.
15. Jerry planted four rose plants, A, B, C and D, into four similar pots. He placed the plants under different conditions as shown in the table below.

Plant	Conditions		
	Air	Sunlight	Water
A	No	No	No
B	No	Yes	Yes
C	Yes	Yes	Yes
D	No	Yes	No

Which one of the plants will survive the longest?

- (1) A
- (2) B
- (3) C
- (4) D

16. Study the flowchart below.



Sophia found some plants growing on the surface of a pond. Based on the flowchart, which one of the following groups can this plant be placed in?

- (1) A
- (2) B
- (3) C
- (4) D

17. The table below shows statements about the characteristics of bacteria.

Statements	Characteristics of bacteria
R	All bacteria are harmful to us.
S	All bacteria reproduce by spores.
T	Most bacteria can make their own food
U	Bacteria can be observed only by using the microscope.

Which of the above statement/s is/are correct?

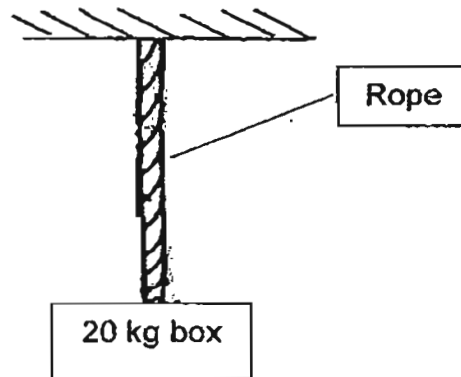
- (1) U only  
 (2) R only  
 (3) R, T and U only  
 (4) S, T and U only
18. Which of the following statements about fungi are correct?

A: It reproduces by spores.  
 B: It is a non-flowering plant.  
 C: It can move freely by itself.  
 D: It feeds on the thing it lives on.

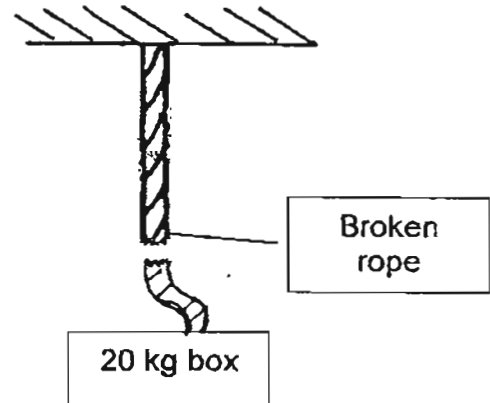
- (1) A and B only  
 (2) A and D only  
 (3) B and C only  
 (4) B and D only

19. 20 kg boxes were hung from two ropes made of two different materials, Material X and Material Y. After 20 minutes, the rope made of Material Y snapped while the rope made from Material X was still able to hold the 20 kg box.

Rope made from material X



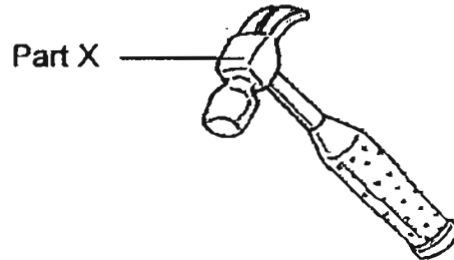
Rope made from material Y



Based on the observation, which one of the following statements is correct?

- (1) Material X is harder than Material Y.
- (2) Material X is thicker than Material Y.
- (3) Material X is stronger than Material Y.
- (4) Material X is more flexible than Material Y.

20. The picture below shows a hammer.



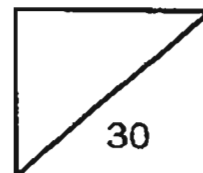
Part X of the hammer is usually made of metal while the handle is made of wood. Which one of the following states the reason for metal to be used for part X?

- (1) Strong and does not break easily.
- (2) Flexible and it can bend to hit the nail.
- (3) Waterproof and does not absorb water.
- (4) Hard and it can scratch other materials.

**End of Part I**



**Rosyth School  
Semestral Examination 1 for 2011  
SCIENCE  
Primary 3**



Name: \_\_\_\_\_

Total  
Marks:

Class: Pr 3 \_\_\_\_\_

Register No. \_\_\_\_\_

Duration: 1 h 30 min

Date: 12 May 2011

Parent's Signature: \_\_\_\_\_

---

## **BOOKLET B**

**Instructions to Pupils:**

1. For questions 21 to 32, give your answers in the spaces given in this Booklet B.

\* This booklet consists of 10 pages.

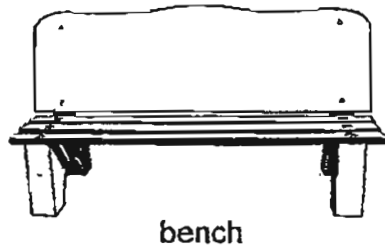
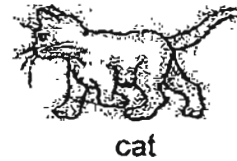
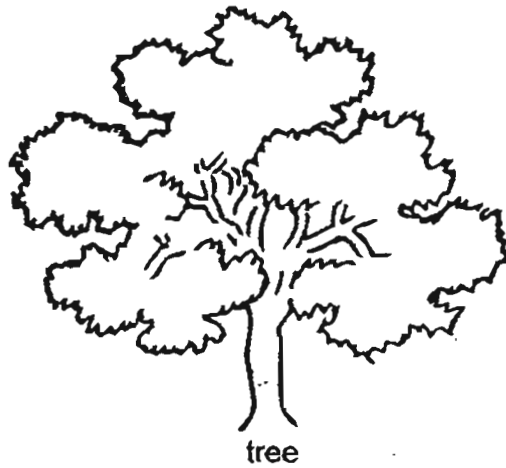
This paper is not to be reproduced in part or whole without the permission of the Principal.



**Part II (30 MARKS)**

For questions 21 to 32, write your answers in this booklet.

21. Eric saw the following things at the park.



Classify these things (tree, bench, cat and toy aeroplane) into the 2 groups below. (2m)

Living Things	Non-living things

22. Siew Lin has three things, X, Y and Z, in her room. She observed them for a period of two months and described their characteristics in the table

	X	Y	Z
Can it move?	Yes	Yes	No
Does it grow?	No	Yes	No
Does it respond to changes?	Yes	Yes	No

- a) Which one (X, Y or Z) could possibly be a living thing? (1m)

\_\_\_\_\_

- b) Give a reason for your answer in (a). (1m)

\_\_\_\_\_  
\_\_\_\_\_

23. Ali saw Animal Y in his garden. It had a pair of wings, a pair of legs and tiny hairs all over its body. Four weeks later, it gave birth to its young alive.

- a) Based on the information given above by Ali, which group of animals would he most likely classify the animal under? (1m)

\_\_\_\_\_

- b) State two characteristics of Animal Y from the description given in the passage to support your answer in (a). (2m)

(i) \_\_\_\_\_

(ii) \_\_\_\_\_

24. The table below shows some characteristics of three imaginary animals A, B and C.

Animal	Number of legs		Eats animal only	Has scales on its body	Lays eggs
	2	4			
A	✓		✓		✓
B		✓	✓	✓	
C	✓		✓		

a) Based on the table above, state the four characteristics of Animal A. (2m)

(i) \_\_\_\_\_

(ii) \_\_\_\_\_

(iii) \_\_\_\_\_

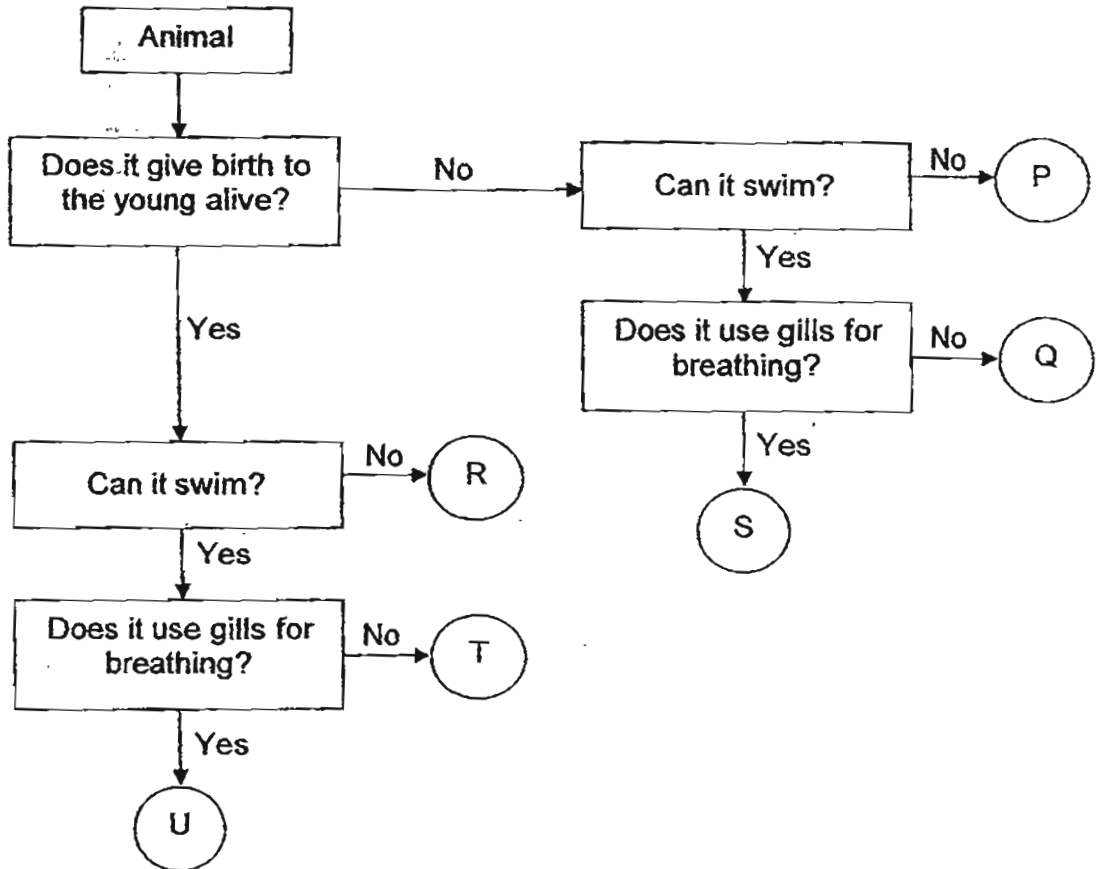
(iv) \_\_\_\_\_

b) Based on the table above, state one difference between Animal B and Animal C. (1m)

\_\_\_\_\_

\_\_\_\_\_

25. The flowchart below gives the characteristics of some animals.



a) State the characteristics of Animal R. (1m)

---



---

b) From the flowchart, state the two similarities between Animals U and S. (2m)

---



---

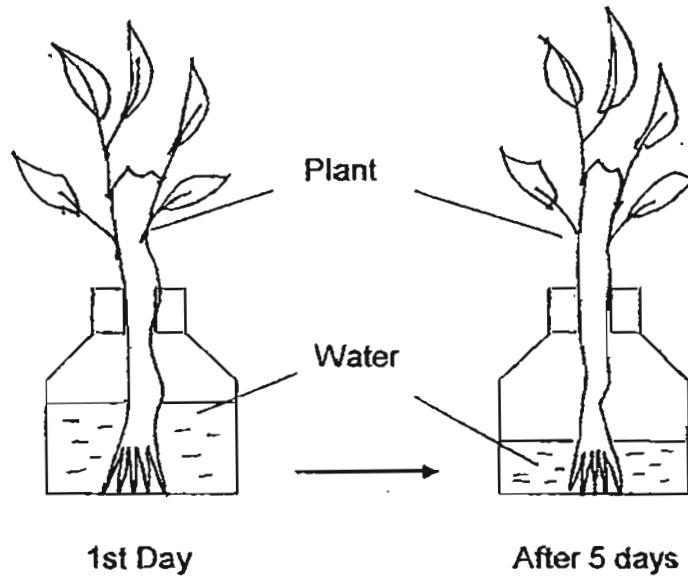
c) From the flowchart, state the difference between Animals T and Q. (1m)

---



---

26. Look at the set-up below.



a) What observation can be made about the amount of water after 5 days? (1m)

---

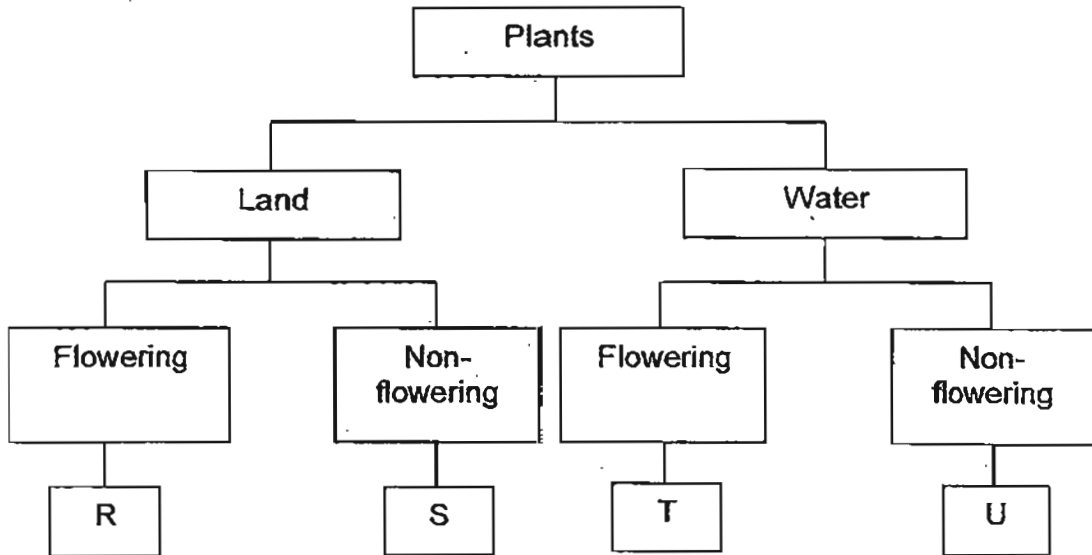
---

b) What has caused the change in the amount of water? (1m)

---

---

27. Study the classification table below.



a) b) Based on the above classification table, name one way that plants are classified. (1m)

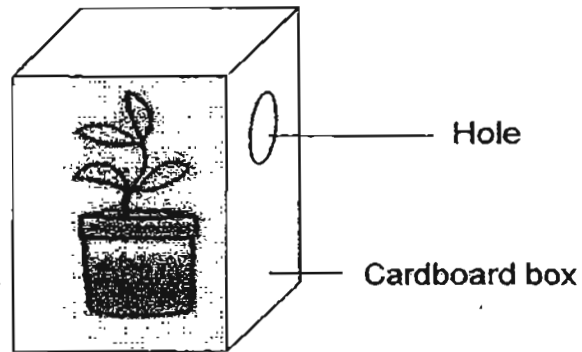
---

b) State one similarity between Plants, R and T? (1m)

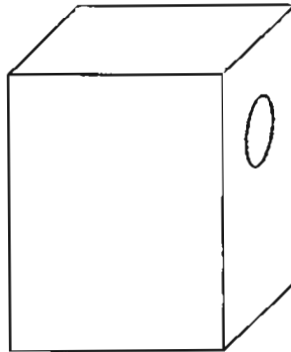
---

---

28. Jeffrey set up the experiment as shown below. He placed it in the garden and watered the plant daily.



- a) Draw in the box below, what you think will happen to the plant after one week. (1m)



- b) What will happen to the plant when there is no hole in the box? (1m)
-

29. Refer to the picture of the mushroom below.



a) In which group of living things does the mushroom belong to? (1m)

---

b) How does mushroom reproduce? (1m)

---



30. Refer to the living things shown below.



Balsam plant



Mushroom

a) Why can a balsam plant and a mushroom be classified as living things? (1m)

---

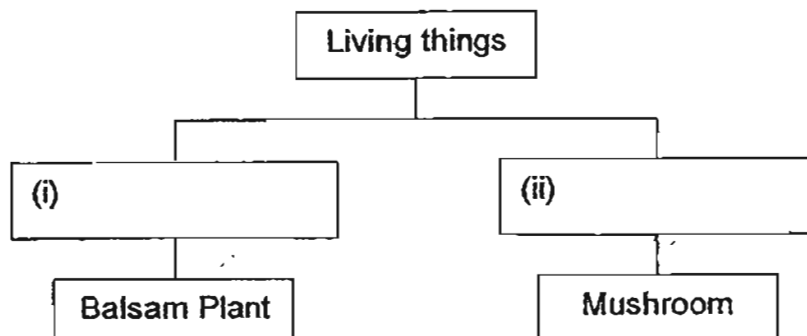
---

b) Why is a mushroom not classified as a plant? (1m)

---

---

c) Write a suitable heading in each of the box. (1m)



31. Four slices of bread are kept under different conditions.

Slice	Conditions	
	Bright	Dry
A		
B	√	√
C		√
D	√	

- a) In what conditions are bread slices A and B kept? (2m)

A: \_\_\_\_\_

B: \_\_\_\_\_

- b) Which slice of bread would have mould growing on it first? (1m)

\_\_\_\_\_

32. Mary has many different types of books.

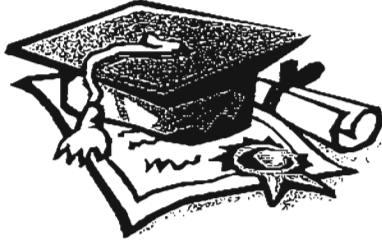
- a) Name a common material books are made of. (1m)

\_\_\_\_\_

- b) Which group of living things can the material mentioned in (a) be made from? (1m)

\_\_\_\_\_

End of paper ©

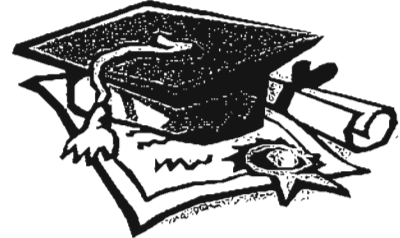


# ANSWER SHEET

**EXAM PAPER 2011**

**SCHOOL : ROSYTH  
SUBJECT : PRIMARY 3 ROSYTH**

**TERM : SA1**



Q1	Q2	Q3	Q4	Q5	Q6	Q7	Q8	Q9	Q10	Q11	Q12	Q13	Q14	Q15	Q16	Q17
4	2	4	4	3	2	2	2	3	1	4	4	4	3	3	2	1

Q18	Q19	Q20
2	3	1

21) Living Things

tree  
cat

Non- living Things

bench  
toy aeroplane

22)a)Y could possibly be a living thing.  
b)It can move, grow and respond to changes.

23)a)Mammals  
b)i)It has tiny hairs all over its body.  
ii)It gives birth to its young alive.

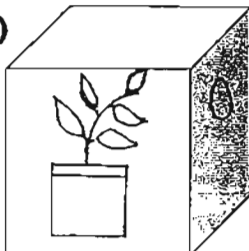
24)a)i)have two legs                      ii)eat animals only  
iii)Lay eggs                                iv)does not have scales on its body  
b)Animal B have four leg but animal C have two leg.

25)a)Animal R gives birth to the young alive it cannot swim.  
b)Animal U and S use it gills for breathing. Both of them can swim.  
c)Animal T give birth to the young alive but animal Q does not.

26)a)The amount of water decreases.  
b)The plant has takes in the water.

27)a)They are classified as land plants and water plants.  
b)Both are flowering plants.

28)a)



**28)b)The plant will die.**

**29)a)It belong to the fungi group.**

**b)It reproduce from spores.**

**30)a)It is because Balsam plant mushroom can grow.**

**b)It does not make its own food.**

**c)i)Plant    ii)fungi**

**31)a)Bright and dry.**

**Dark and damp.**

**b)A.**

**32)a)The material is paper.**

**b)The group is plants.**