



RED SWASTIKA SCHOOL

# RED SWASTIKA SCHOOL

## 2011 SEMESTRAL ASSESSMENT 1

### SCIENCE PRIMARY 3

Name : \_\_\_\_\_ (     )

Class : Primary 3/ \_\_\_\_\_

Date : 16 May 2011

### BOOKLET A

Total time for Booklets A & B: 1h 30 min

Booklet A: 30 questions (60 marks)

Note:

1. Do not open the booklet until you are told to do so.
2. Read carefully the instructions given at the beginning of each part of the booklet.
3. Do not waste time. If the question is too difficult for you, go on to the next question.
4. Check your answers thoroughly and make sure you attempt every question.
5. In this booklet, you should have the following:
  - a. Page 1 to Page 14
  - b. Questions 1 to 30

**Section A**

For Questions 1 to 30, choose the most suitable answer and shade its number in the OAS provided.

1 Four pupils made the following statements:

- Anne: Living things have young.
- Barry: Living things never die.
- Charlene: Living things need air, food and water.
- Danny: Living things respond to changes.

Which one of them is incorrect?

- (1) Anne
  - (2) Barry
  - (3) Charlene
  - (4) Danny
- 2 Peter wrote a note about an animal:

**It feeds on plants and other animals.  
It reproduces by laying eggs.  
It breathes through lungs.**

This note best describes the \_\_\_\_\_.

- (1) chicken
  - (2) eagle
  - (3) tadpole
  - (4) guppy
- 3 What outer covering does this animal have?



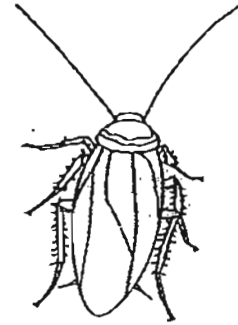
- (1) Fur
- (2) Shell
- (3) Scales
- (4) Feathers

4 Which one of the following does not belong to the same group as the others?

(1)



(2)



(3)



(4)



5 A stone was thrown towards two birds and they flew away in different directions as shown below.



stone

This shows that animals \_\_\_\_\_.

- (1) have young
- (2) need food
- (3) respond to changes
- (4) need air and water

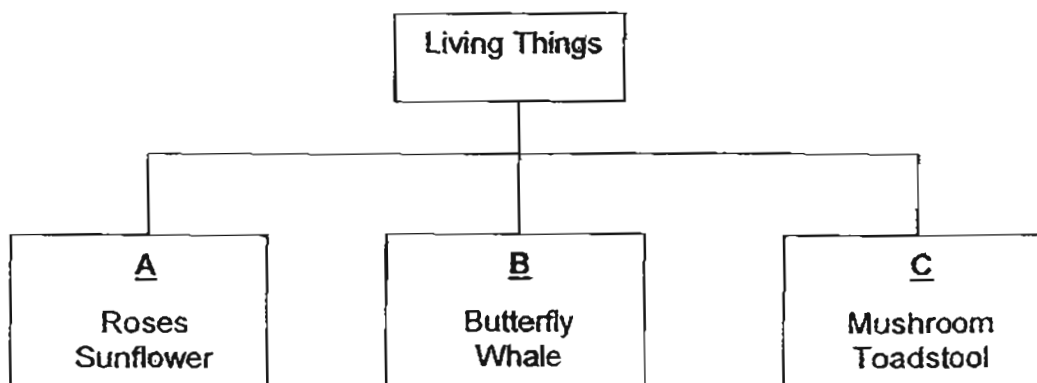
- 6 Tommy did an experiment by placing 20 grasshoppers into a tank. He also placed a beaker of water in the tank. He covered the tank with a wire net and placed the tank in a classroom. Then he recorded the number of grasshoppers that were still alive in the tank at the end of each day.

	Day							
	1	2	3	4	5	6	7	8
Number of grasshoppers still alive	20	20	19	17	15	14	14	13

The number of grasshoppers decreased because \_\_\_\_\_.

- (1) there was no food
- (2) there was not enough air
- (3) the grasshoppers were not reproducing
- (4) the grasshoppers did not like the tank

- 7 The following living things are classified as shown below.



Which of the following do 'A', 'B' and 'C' represent?

	A	B	C
(1)	Plants	Insects	Fungi
(2)	Plants	Animals	Bacteria
(3)	Flowering plants	Mammals	Plants
(4)	Flowering plants	Animals	Fungi

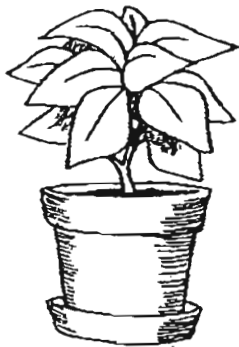
- 8 John planted a balsam plant over a period of six months. The balsam plant was 10 cm at the beginning. He recorded the height of the plant as follows:

Number of months	Height (cm)
2	30
4	60
6	80

This shows that John's balsam plant has \_\_\_\_\_.

- (1) died
- (2) reproduced
- (3) responded
- (4) grown

- 9 The pictures below show a potted green plant and a wild monkey.



A: Potted green plant

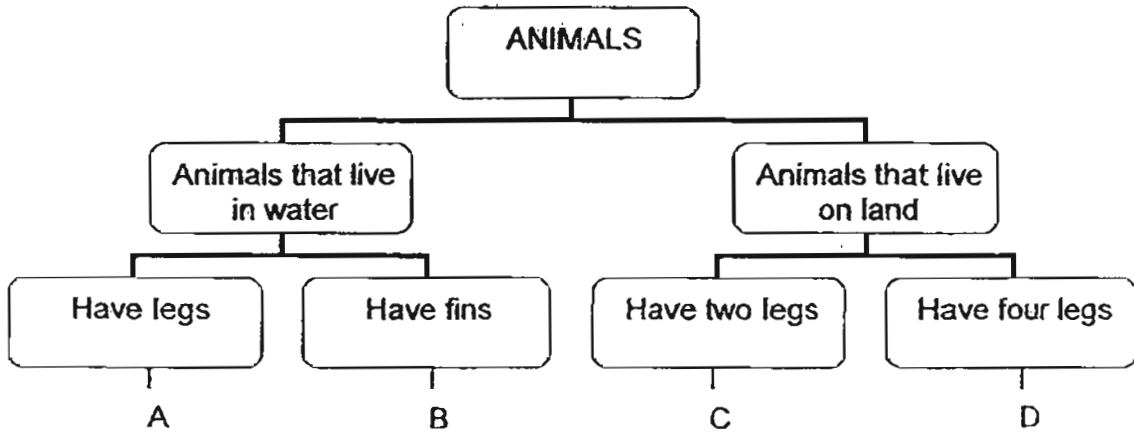


B: Wild monkey

Which one of the following comparisons is correct?

	A	B
(1)	A living thing	A non-living thing
(2)	Can move freely on its own	Cannot move freely on its own
(3)	Needs air	Does not need air
(4)	Can make food	Cannot make food

10 Study the following chart carefully.



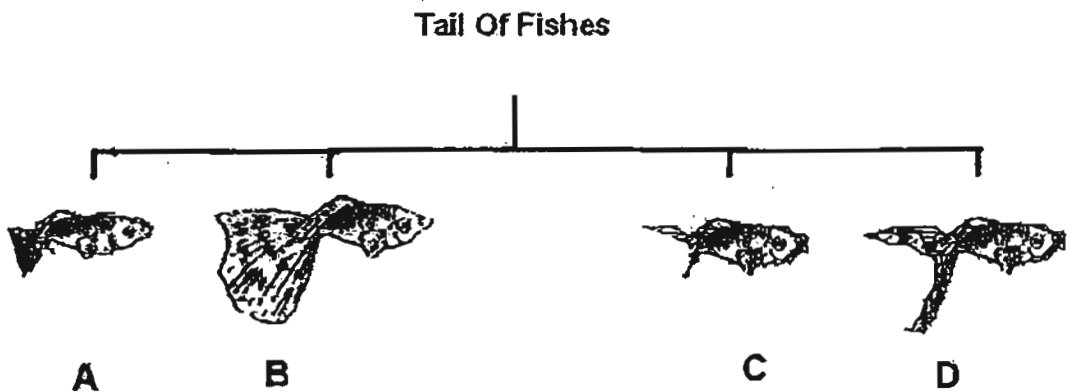
Where would you put this animal in the chart above?



- (1) A
- (2) B
- (3) C
- (4) D

11 The diagram shows how different groups of fishes are classified.

Which one of the following groups should a fish with a fan-shaped tail that is longer than the length of its head belong to?



- (1) A
- (2) B
- (3) C
- (4) D

12 John made the following statements about the frog shown below.



A: It can live on land and in water.

B: It has gills.

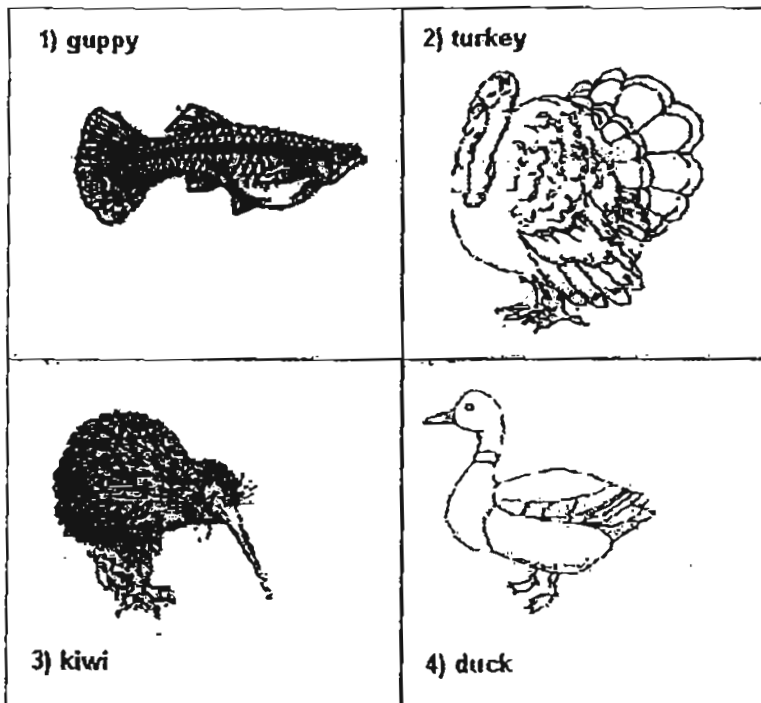
C: It lays eggs.

D: It feeds on animals.

Which of the statements about the frog are correct?

- (1) A, B and C only
- (2) B, C and D only
- (3) A, C and D only
- (4) A, B, C and D

13 Which one of the following move differently from the rest?



- (1) guppy
- (2) turkey
- (3) kiwi
- (4) duck

14 The information below is taken from a yoghurt dessert container.

Ingredients: Lactobacillus Sugar Cow's milk
--

Lactobacillus is a useful bacteria used in the making of yoghurt.  
Lactobacillus is useful to us because it can \_\_\_\_\_.

- (1) make its own food
- (2) cause illnesses
- (3) be seen under a microscope
- (4) be used to produce food

15 Below is a picture of a mushroom.



Which of the following statements about the mushroom is/are true?

- A: It needs water
- B: It grows only in soil.
- C: It needs sunlight to make food.

- (1) A only
- (2) A and B only
- (3) B and C only
- (4) A, B and C



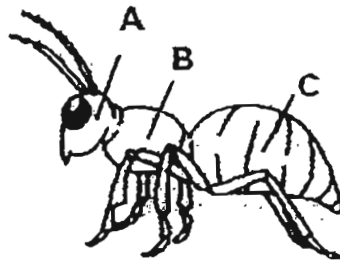
- 16 Ali bought 3 different young plants. He named them W, X and Y and observed them for a year. He recorded the number of flowers each of them had produced throughout the year and concluded whether each plant is a flowering plant.

Plant	Number of flowers	
	1 <sup>st</sup> half of the year	2 <sup>nd</sup> half of the year
W	0	5
X	0	0
Y	58	60

Based on the table above, which of the following shows the correct conclusion about W, X and Y?

	W	X	Y
(1)	It is a flowering plant	Not possible to tell	It is a flowering plant
(2)	It is a flowering plant	It is a non-flowering plant	It is a non-flowering plant
(3)	It is a non-flowering plant	Not possible to tell	It is a flowering plant
(4)	Not possible to tell	It is a non-flowering plant	It is a flowering plant

- 17 Which of the following shows the correct labels of the different parts of the ant?



	A	B	C
(1)	antenna	wings	abdomen
(2)	antenna	body	abdomen
(3)	head	abdomen	thorax
(4)	head	thorax	abdomen

- 18 Mary had some dried orchids from a Teachers' Day celebration. She wanted to keep the flowers. Four of her friends gave her some ideas with the respective reasons.

Andy	Put the flowers into a vase of water as they need water to survive.
Benny	Place the flowers in a cold place so that they can take in air.
Cherie	Store the flowers in a box as they do not need air, food and water.
Daryl	Put the flowers at a place with sunlight. The flowers can make food.

Who gave the correct reason for his / her idea?

- (1) Andy
  - (2) Benny
  - (3) Cherie
  - (4) Daryl
- 19 Alan classified some animals into the table shown below.

GROUP A	GROUP B
Platypus	Rabbit
Butterfly	Dolphin

Which of the following pairs are the correct headings for Group A and Group B?

	GROUP A	GROUP B
(1)	Animals that live on land only	Animals that live in water only
(2)	They lay eggs	They give birth to young alive
(3)	They are plant eaters	They are animal eaters
(4)	Breathe through gills	Breathe through lungs

- 20 Which one of the following examples correctly shows the characteristic of a living thing?

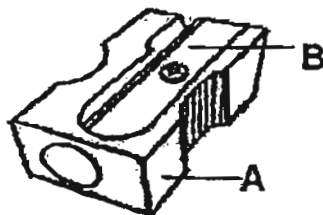
	Characteristics	Example
(1)	Able to reproduce	A papaya plant grows a new leaf
(2)	Able to move	A dog chases a thief
(3)	Able to reproduce	A teacher makes a copy of a baby's picture on a machine
(4)	Needs air to breathe	A boy pumps air into a balloon

- 21 Peter collected the following things and classified them into the same group.

marble	stone	dried branches
sand	small feather	

How are they similar?

- (1) They are black.
  - (2) They are living things.
  - (3) They are non- living things.
  - (4) They need air and water.
- 22 The picture below shows a sharpener for sharpening pencils.



Which of the following shows the correct materials the parts are made of?

	A	B
(1)	paper	metal
(2)	plastic	rubber
(3)	plastic	metal
(4)	wood	rubber

23 The picture below shows a pair of spectacles.



Name the material that is most suitable for making part S.

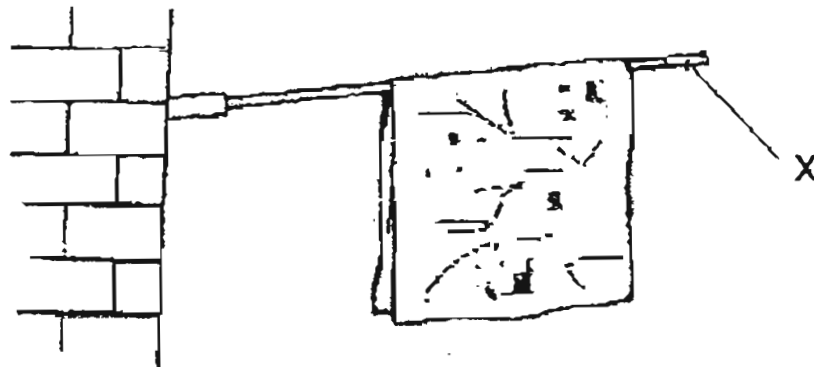
- (1) metal
- (2) wood
- (3) rubber
- (4) glass

24 Below is a picture of a soldier in ancient times wearing an armour. The armour is made of metal because \_\_\_\_\_.



- (1) it will increase his strength
- (2) it is shiny
- (3) it is strong and it is good protection
- (4) it is not expensive

25 Study the picture below. Part X shows a bamboo pole.



Which part of the bamboo plant is X made from?

- (1) root
- (2) flower
- (3) leaf
- (4) stem

26 The picture shows a house made of bricks and another house made of straw.



A brick house

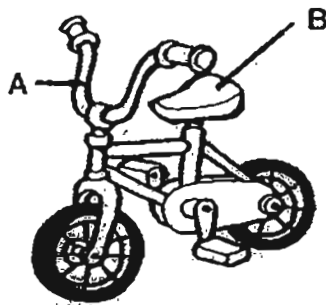


A straw house

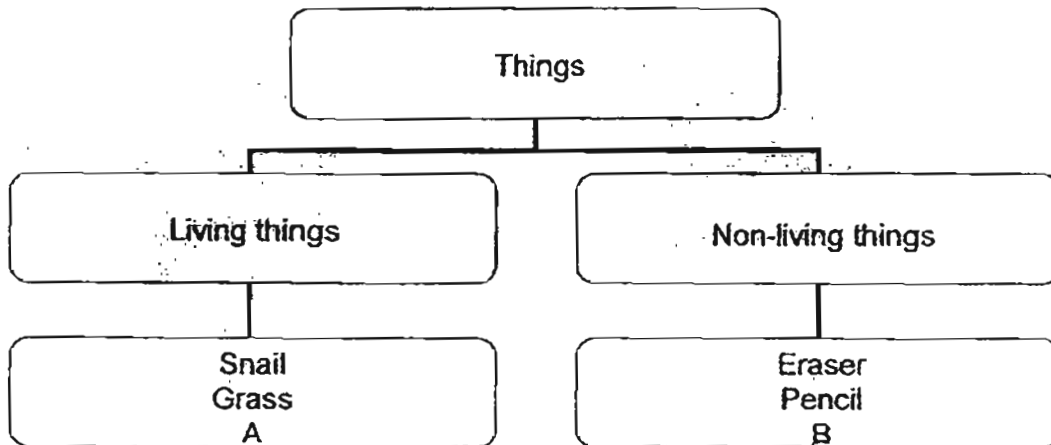
Which of the following is true of the two houses?

	A brick house	A straw house
(1)	is weaker	is stronger
(2)	is flexible	is not flexible
(3)	is stronger	is weaker
(4)	cannot be scratched	can be scratched

27 Peter's bicycle is made of several types of material. Study the parts of the bicycle carefully and match the correct material to parts A and B.



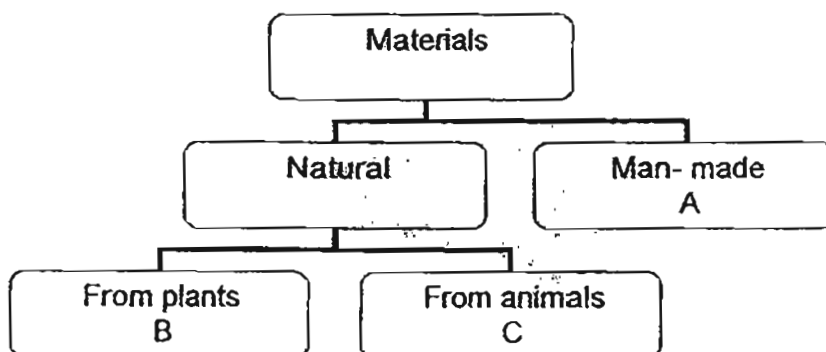
	A	B
(1)	glass	plastic
(2)	metal	paper
(3)	rubber	wood
(4)	metal	plastic



Which of the following can A and B be?

	A	B
(1)	stone	sand
(2)	ant	bag
(3)	plate	fly
(4)	seed	beetle

29 Study the grouping of materials below.



Which of the following statements is correct?

- (1) An example of A is wool.
- (2) Leather can be grouped in B or C.
- (3) Metal can be grouped in C.
- (4) Plastic can be grouped in A.

**30** Paul moulded a piece of plasticine into many different shapes. Then he made the following statements.

- A: Plasticine is flexible.
- B: Plasticine is strong.
- C: Plasticine sinks in water.
- D: Plasticine comes from plants.

Based on the activity he has done, which of the following statements is/are correct?

- (1) A only
- (2) A and B only
- (3) C and D only
- (4) A, B, C and D

**End of Booklet A**  
**Please check your answers.**



RED SWASTIKA SCHOOL

# RED SWASTIKA SCHOOL

## 2011 SEMESTRAL ASSESSMENT 1 SCIENCE PRIMARY 3

Name : \_\_\_\_\_ ( )

Class : Primary 3/ \_\_\_\_\_

Date : 16 May 2011

### BOOKLET B

14 Questions  
40 Marks

In this booklet, you should have the following:

- a. Page 15 to Page 27
- b. Questions 31 to 44

### MARKS

	OBTAINED	POSSIBLE
BOOKLET A		60
BOOKLET B		40
TOTAL		100

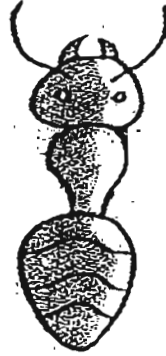
Parent's Signature : \_\_\_\_\_



**Section B**

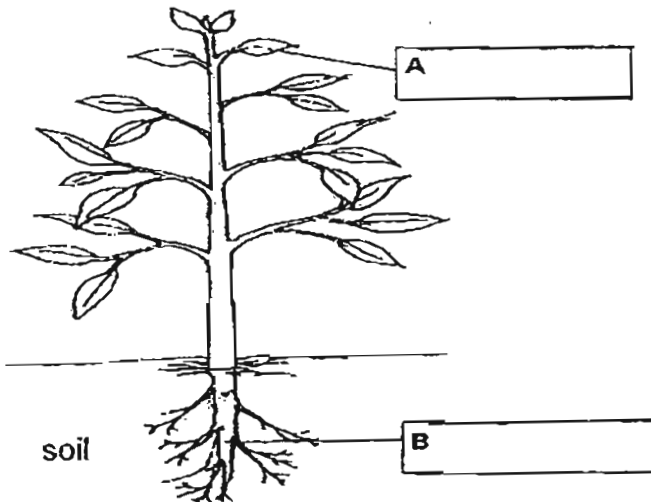
Answer all the questions in the space provided.

31 Ali wanted to draw a picture of a non-flying insect. In his drawing, he missed out a part of the insect's body.



- (a) Draw the missing part of the body in the picture above using lines. (1m)
- (b) Draw arrows to show the feelers and label them "feelers". (1m)

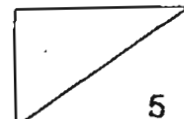
32(a) Label the parts of the plant marked A and B by filling in the boxes below (1m)



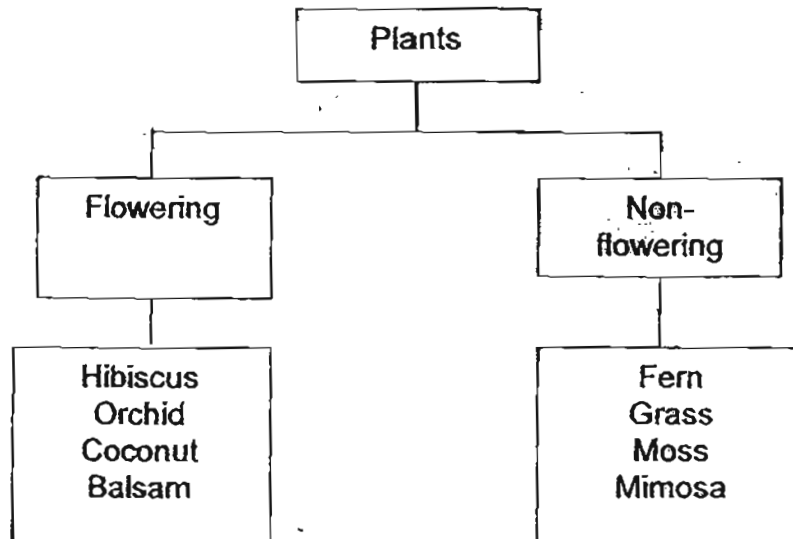
(b) Harry found a rose plant without any flowers on it. Can he say that all rose plants do not have flowers? Explain your answer (2m)

---

---



33 Cong Ming classified some plants as follows:



(a) Two of the plants have been classified wrongly. Which are the two plants? (1m)

i) \_\_\_\_\_

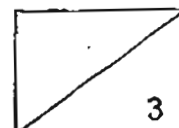
ii) \_\_\_\_\_

(b) His teacher told him that he cannot put "mushroom" in the classification chart above. Why is this so? (1m)

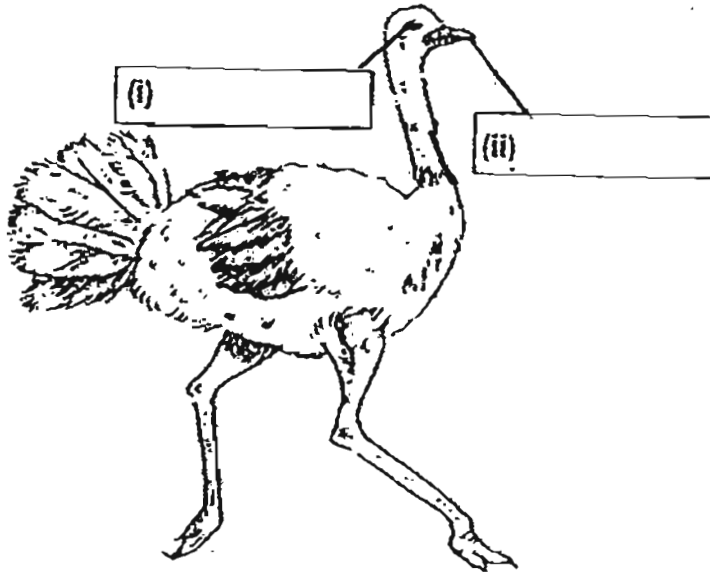
\_\_\_\_\_  
\_\_\_\_\_

(c) Name another organism that belongs to the same group as mushroom. (1m)

\_\_\_\_\_



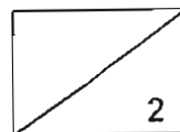
34 The diagram below shows an ostrich.



- (a) Label the parts of its body by filling in the boxes above. (1 m)
- (b) What is the difference between a pigeon and a penguin in the way they move around? (1m)

---

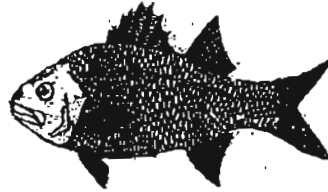
---



35 The picture below shows two animals that are not drawn according to actual size.



A



B

Animal A is a killer whale and it is a mammal. Which group of animals does (a) Animal B belong to ? (1m)

---

(b) Based on the pictures only, write down one similarity and one difference between the body parts of the two animals. (Do not compare colour, shape and size.) (2m)

(i) Similarity:

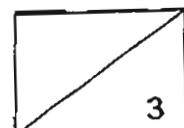
---

---

(ii) Difference:

---

---



36 Alex walked around the school and took down some notes of the animals he saw. He wrote down the names of some animals shown below.

pigeon	cockroach	grasshopper
hamster	caterpillar	goldfish

(a) Read the notes in the boxes below. Select the 4 most suitable animals to represent W, X, Y and Z and write the answers in the blanks provided. (2m)

W	X	Y	Z
It hops. It feeds on leaves only. It has 6 legs.	It flies. It feeds mostly on seeds and left-over food. It lays eggs.	It swims. It feeds on animals and plants. It has gills.	It moves on 4 legs. It feeds on both plants and animals.

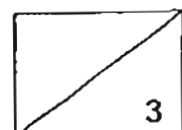
W: \_\_\_\_\_

X: \_\_\_\_\_

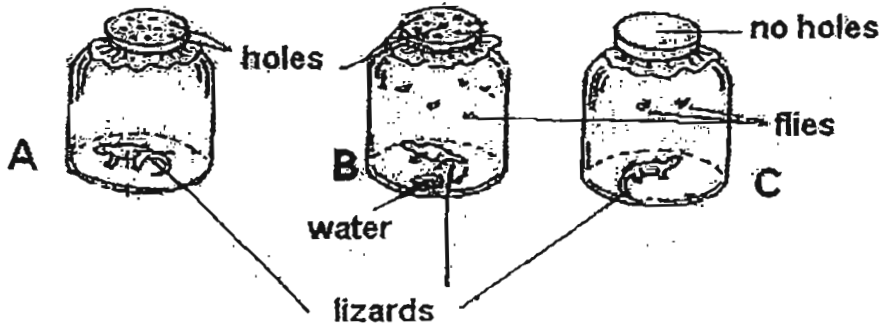
Y: \_\_\_\_\_

Z: \_\_\_\_\_

(b) Besides looking for food and water, suggest another reason why animals move from place to place. (1m)

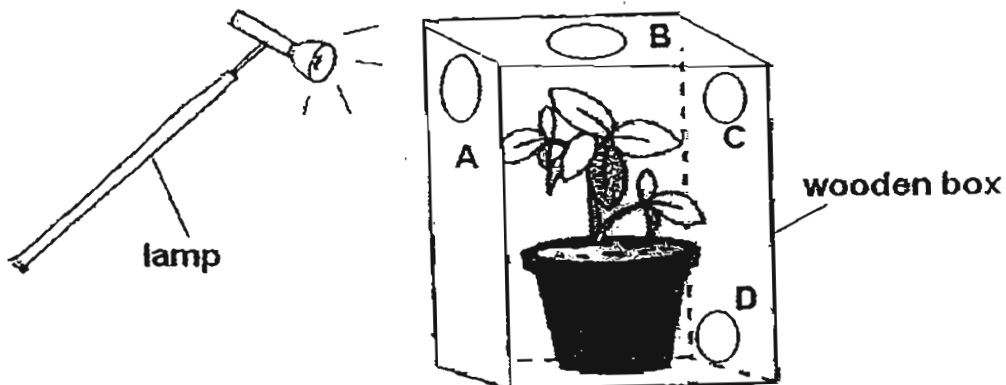


37 Miss Darin puts a lizard each into 3 identical containers A, B and C. The containers were covered as shown.



- (a) In which container would the lizard survive after a week? (1m)  
 Container : \_\_\_\_\_
- (b) What can this experiment tell us about living things? (2m)

38 Bala made a wooden box with 4 holes A, B, C and D. Then he placed a pot of plant into the box as shown. The lamp was switched on throughout the experiment and it was the only source of light in the room.



- (a) He observed that the plant has grown towards a particular hole after a few days. Which hole is that? (1m)
- \_\_\_\_\_
- (b) Explain your answer in part (a). (2m)
- \_\_\_\_\_
- \_\_\_\_\_

39 Fatimah wanted to test the hardness of two materials, wood and metal. She carried out two simple experiments. In the first experiment, she used a nail to scratch a wooden spoon. In the second experiment, she used the same nail to scratch a metal spoon.

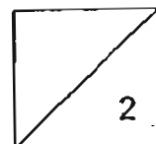
(a) Write down her observations in the table below. (1m)

	Observations of the surface of the spoons
First experiment	<hr/> <hr/>
Second experiment	<hr/> <hr/>

(b) What can Fatimah conclude about the two materials? (1m)

---

---



40 Study the properties of the materials used to make the 4 objects listed below.

Objects	Properties of material the object is made of				
	Strong	Flexible	Absorbs water	Can be scratched easily	Able to let light pass through
Door	√			√	
Drinking glass	√				√
Water pipe	√				
Book		√	√	√	

(a) Based on the information above, list all the characteristics of the material that is used to make a drinking glass. (1m)

---

(b) Based on the table, can the door be made of thin plastic? Why?. (1m)

---



---

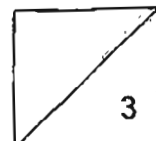
(c) Based on the table, would you use the same material for the drinking glass to make a blindfold for a person? Why? (1m)




---

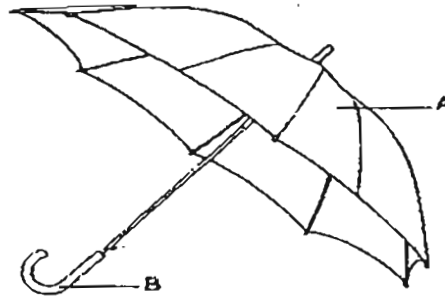


---





41 The picture below shows an umbrella.

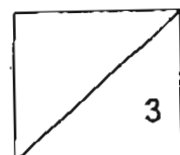


(a) Which material is most suitable for making part A, to keep out the rain?  
Why? (1m)

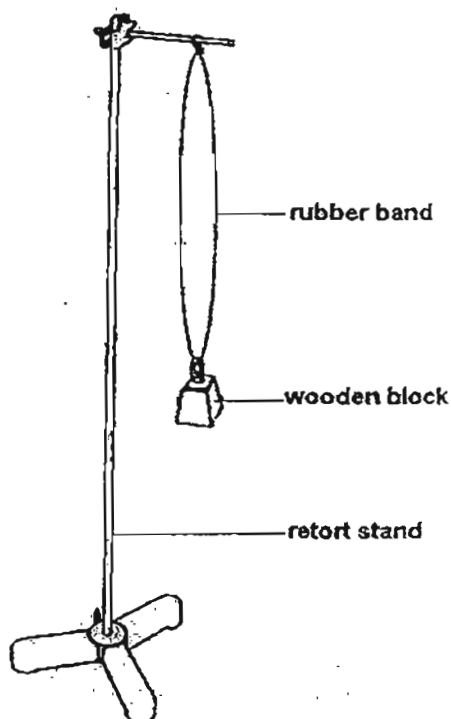
---

(b) In the table below, name a common material that part B is made of and write the property of the material which makes it suitable. (2m)

Part	Material it is made of	Property of that material
B		



- 42 Benny hung the same wooden block to 3 different rubber bands P, Q and R. The rubber band had the same original length of 5 cm each. The picture below shows one of the set-ups.



The table records the measurement for each of the rubber bands.

Rubber band P,Q,R	Length when wooden block was hung from it
P	10 cm
Q	7 cm
R	13 cm

- (a) From the table, what can you conclude about Rubber band Q? (1m)
- 
- (b) What was the increase in the length of the rubber band when the wooden block was hung on R? (1m)
- 
- (c) Benny replaced the wooden block with a styrofoam block of the same size. Predict the length of rubber band P when the styrofoam block was hung on it. (1m)
-

43. Peter tested 4 items by bending them with his hands. Then he grouped the four items as shown below in Table X based on his observation.

**Table X**

Group A	Group B
A wooden ruler A wooden ladle	A plastic ruler A rubber slipper

- (a) But he forgot to write down the heading. Write a suitable heading for each group based on the experiment that Peter did. (1 m)

Group A: \_\_\_\_\_

Group B: \_\_\_\_\_

- (b) Table Y below shows the properties of two materials.

**Table Y**

Material	Sinks	Floats
Q	√	X
S	X	√

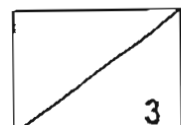
- (i) Using the properties in Table Y, which material Q or S, is used to make a toy boat? (1 m)

\_\_\_\_\_

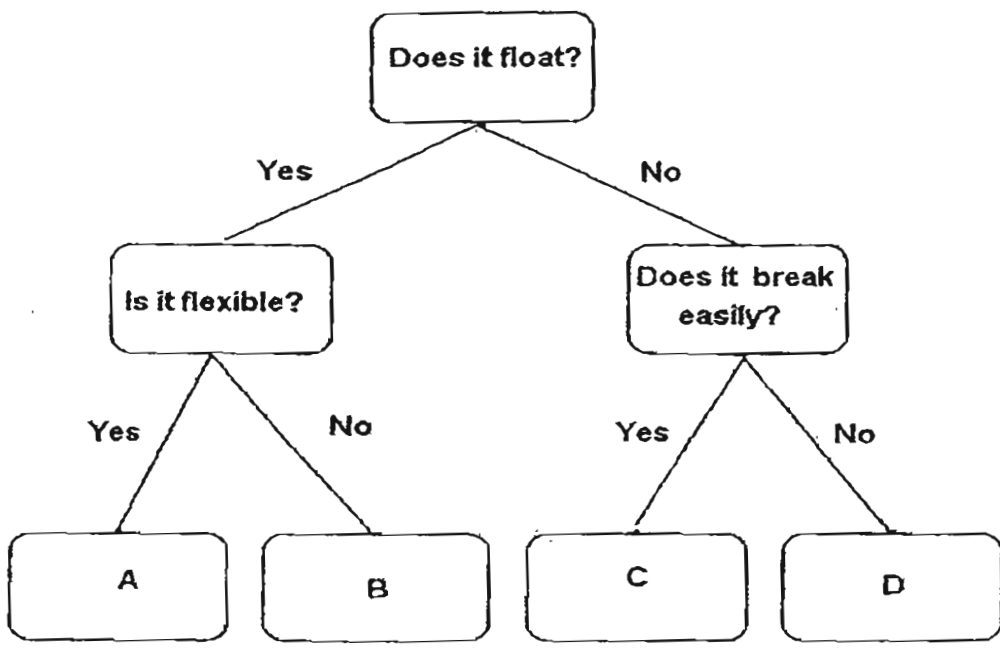
\_\_\_\_\_

- (ii) Choose the most suitable material for making the following things by putting a (√) in the correct boxes in the table below. (1m)

	Made from material Q	Made from material S
Life jacket		
Ping pong ball		

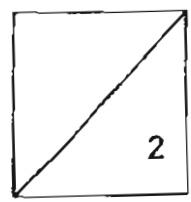


44 Study the flow chart below.



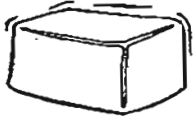
(a) Fill in the letter A, B, C and D into the blanks below. Use each letter once only. (2m)

- (i) Ceramic cup : \_\_\_\_\_
- (ii) Styrofoam board: \_\_\_\_\_
- (iii) Plastic straw : \_\_\_\_\_
- (iv) Metal nail : \_\_\_\_\_



(b) Study the following diagrams.

A: Butter



B: Copper coin



C: Aluminium can



D: Glass piece



E: A bar of soap



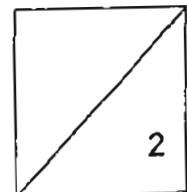
F: Plastic ruler

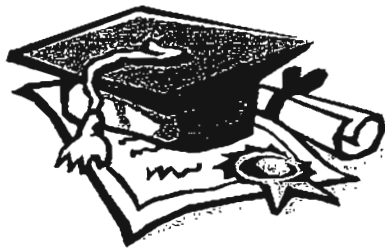


Fill in the following table using the letters A, B, C, D, E and F. Use each letter once only. (2m)

Objects that can be scratched by a toothpick	Objects that cannot be scratched by a toothpick

**End of Booklet B**  
Please check your answers.



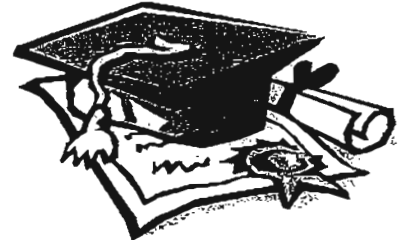


# ANSWER SHEET

## EXAM PAPER 2011

SCHOOL : RED SWASTIKA  
SUBJECT : PRIMARY 3 SCIENCE

TERM : SA1



Q1	Q2	Q3	Q4	Q5	Q6	Q7	Q8	Q9	Q10	Q11	Q12	Q13	Q14	Q15	Q16	Q17
2	1	1	1	3	1	4	4	4	4	2	3	1	4	1	1	4

Q18	Q19	Q20	Q21	Q22	Q23	Q24	Q25	Q26	Q27	Q28	Q29	Q30
1	2	2	3	3	4	3	4	3	4	2	4	1

31)a,b)



32)a)A: leaf      B: roots  
b)No. A rose plants a flowering plant.

33)a)i)Grass      ii)Mimosa  
b)"Mushroom" is not a plant.  
c)Toadstool.

34)a)i)Eyes      ii)Beak  
b)A Pigeon flies but a Penguin.

35)a)It belong to a group called "Fish".  
b)i)They have fins.  
ii)Animal B has scales but Animal A has hair.

36)a)W: grasshopper      X: pigeon      Y: goldfish      Z: hamster  
b)They escape from danger.

37)a)B.  
b)Living thing need air, food and water.

38)a)Hole A.  
b)leaves need light to make food. Hole A is nearest the lamp. Most of the light from the lamp enters the box through Hole A to get the most light to make food.

39)a)The wooden spoon was scratched.  
 The metal spoon was not scratched.  
 b)She can conclude that metal is harder than wood.

40)a)It is strong and able to let light pass through.  
 b)No. It is not strong and is transparent.  
 c)No. The material for the drinking glass is transparent but a blindfold should be opaque.

41)a)Plastic. It waterproof.  
 b)Plastic / strong

42)a)It is less stretchable than P and R.  
 b)13cm – 5cm = 8cm  
 c)It is about 7cm.

43)a)A: Not Flexible.  
 B: Flexible.  
 b)i)Material S.

ii)

	Made from material Q	Made from material S
Life jacket		✓
Ping Pong ball		✓

44)a)i)C ii)B iii)A iv)D  
 b)

Objects that can be scratched by a toothpick	Object that cannot be scratched by a toothpick
A E	B C D F