



RAFFLES GIRLS' PRIMARY SCHOOL

SEMESTRAL ASSESSMENT (1)

2011

Section A	36	
Section B	24	
Your score out of 60 marks		
Highest score	Class	Level
Average score		
Parent's signature		

Name : _____ Index No: _____ Class: P 3 _____

6 May 2011

SCIENCE

Attn: 1 h

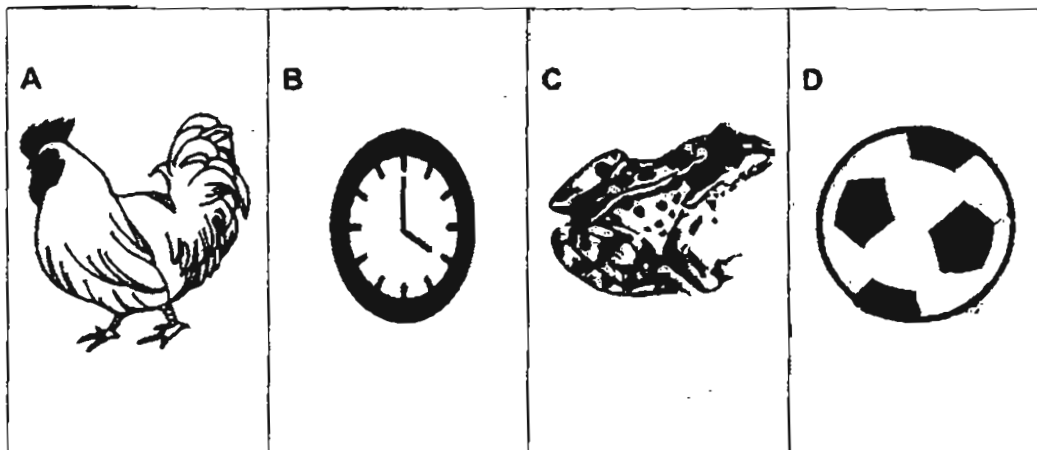
SECTION A (18 X 2 marks)

For each question from 1 to 18, four options are given.

One of them is the correct answer. Make your choice (1, 2, 3 or 4).

Shade the correct oval on the Optical Answer Sheet.

1. Some things are given as follows:



Which one of these following sets of things needs air, food and water?

- | | |
|------------------|------------------|
| (1) A and C only | (2) A and D only |
| (3) B and C only | (4) B and D only |

2. Which one of the following groups of things can respond to changes in their environment on their own?

(1) ant, water, light

(2) snake, silk, worm

(3) bacteria, fern, mushroom

(4) rubber duck, man, tree

3. Which of the following show the characteristics of living things?

A A fire spreads through a forest

B A balloon becomes bigger when inflated

C A tortoise hides inside its shell when touched

D The leaves of a rain tree close in the evening

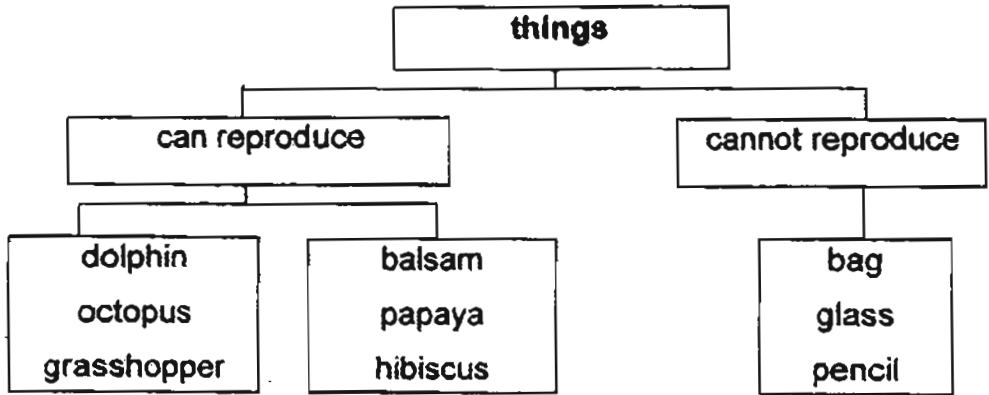
(1) A and B only

(2) A and D only

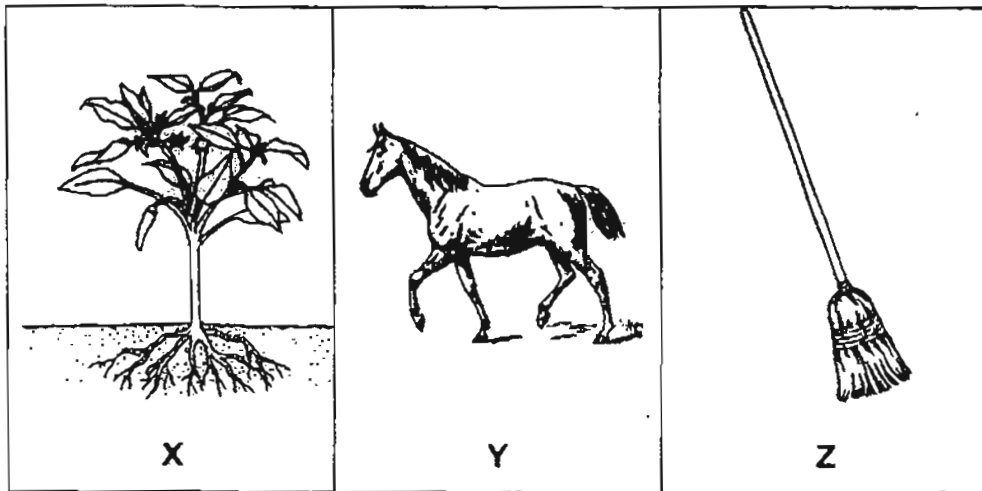
(3) C and D only

(4) A, B and C only

4. The classification chart below shows how some things are classified.

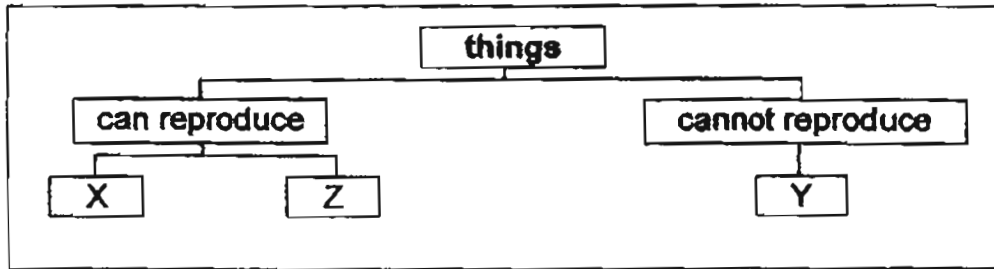


John was given the following set of things:

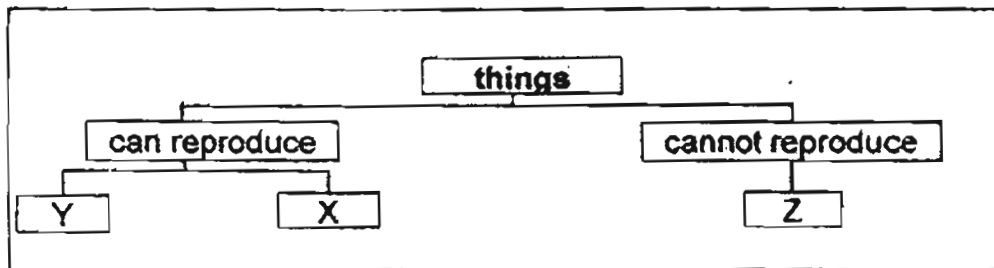


4. Which one of the following diagrams shows the correct classification of X, Y and Z using the chart on page 3?

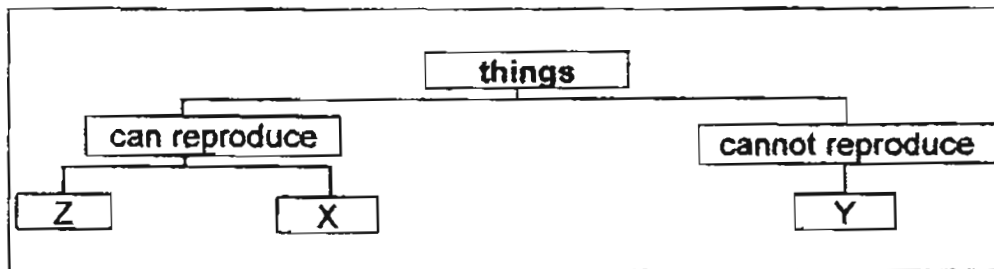
(1)



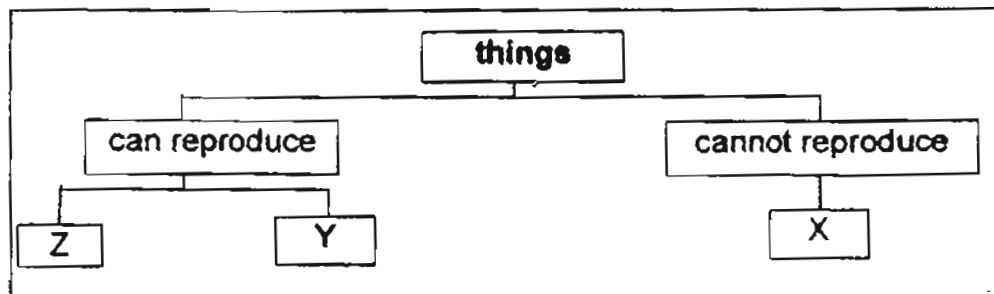
(2)



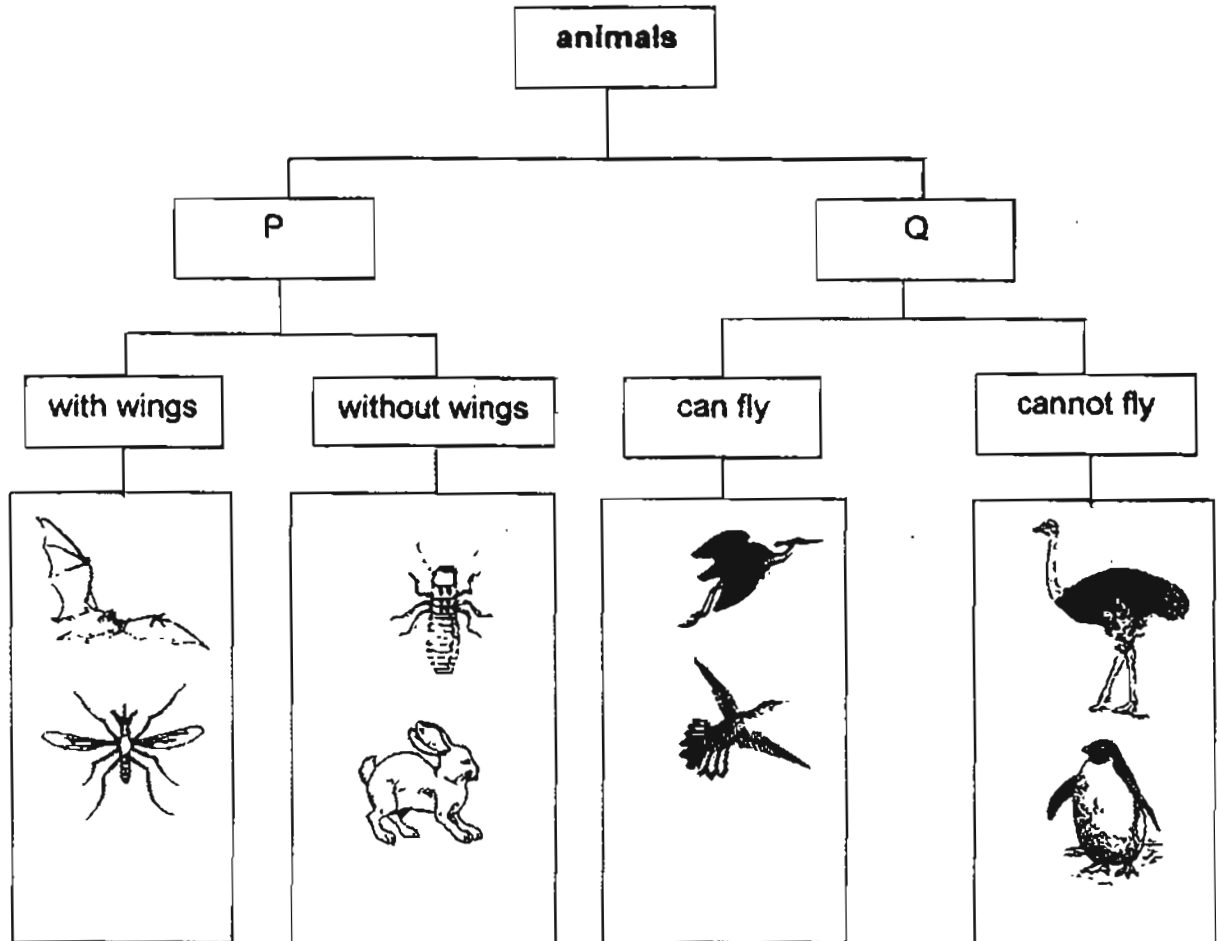
(3)



(4)



Some animals are classified into 2 main groups, P and Q, as shown below.

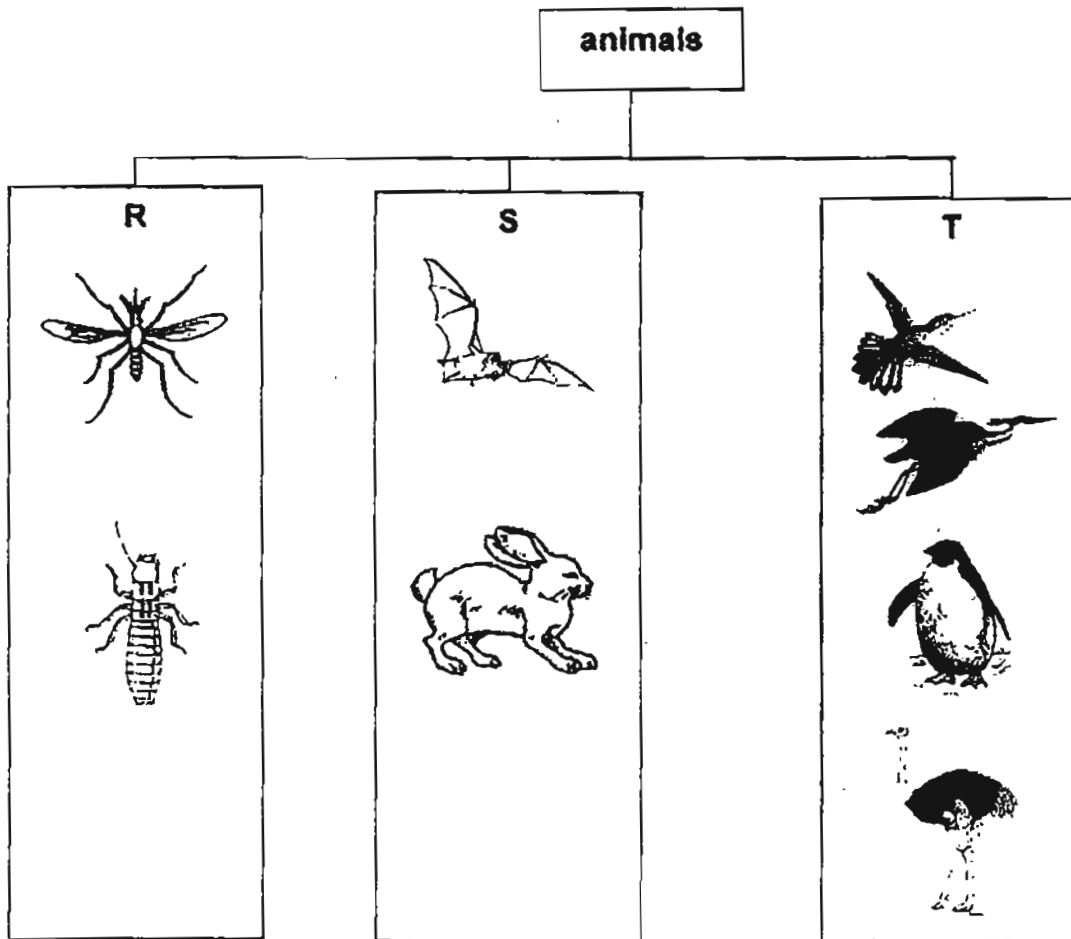


Based on the information above, answer **questions 5 and 6**.

5. Which one of the following sets gives the appropriate sub-headings of P and Q?

	P	Q
(1)	lay eggs	give birth to young alive
(2)	live on land	live in water
(3)	has two legs	has more than two legs
(4)	without feathers	with feathers

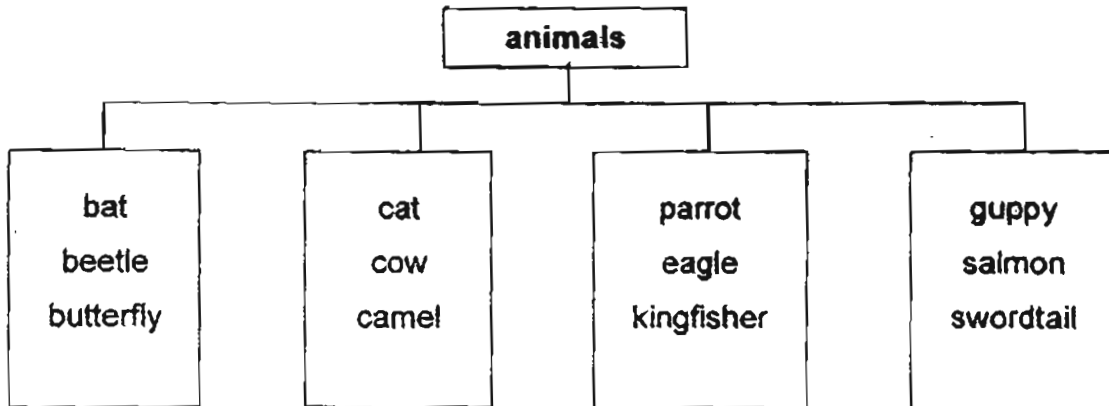
6. The animals (NOT drawn to scale) can be regrouped in **ANOTHER** way as shown below.



Which one of the following gives the correct sub-headings of R, S and T?

	R	S	T
(1)	without wings	with wings	with wings
(2)	without feelers	with feelers	with feelers
(3)	animals which fly	animals which walk	animals which swim
(4)	with hard body covering	with hair	with feathers

7. The animals below are grouped according to their similarities.



Which one of these animals is classified wrongly?

- (1) bat (2) camel
(3) kingfisher (4) guppy

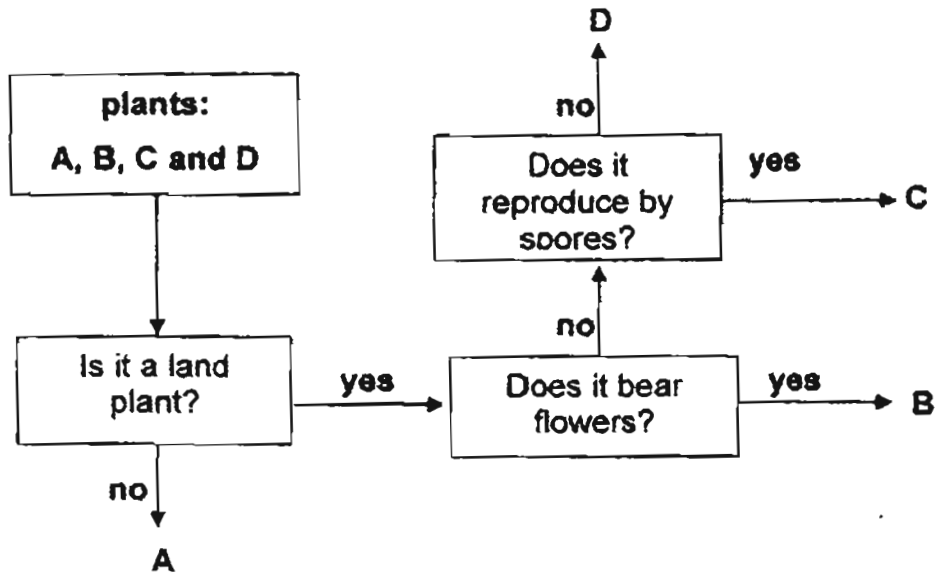
8. Four pupils made the following statements about animals:

- Adrian : All mammals have fur or hair.
Bernita : All birds have a beak, feathers and wings.
Congming : Some animals lay eggs while others give birth to live young.
Diviya : Outer coverings such as feathers and scales protect animals from injuries.

Which of these pupils were correct?

- (1) Adrian and Bernita only
(2) Adrian and Diviya only
(3) Adrian, Congming and Diviya only
(4) Adrian, Bernita, Congming and Diviya

9. Plants A, B, C and D are differentiated using the chart below.



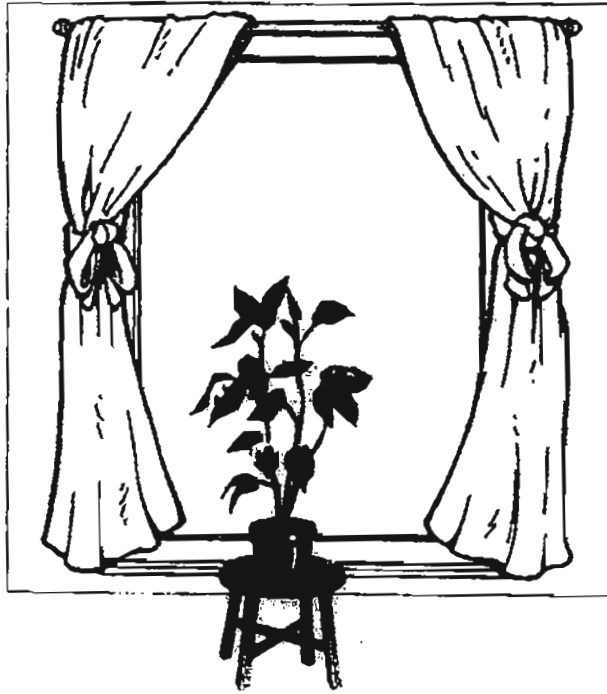
Based on the information above, which one of the following identifies plants B and C correctly?

	plant B	plant C
(1)	moss	mushroom
(2)	mimosa	toadstool
(3)	sunflower	bird's nest fern
(4)	morning glory	ixora

10. Which one the following statements about ferns and mosses is correct?

- (1) They do not bear flowers.
- (2) They are found only in water.
- (3) They do not need air, food and water.
- (4) They feed on dead plants and animals.

11. Ahmad placed a pot of plant near an open window before he went away for a holiday for 2 weeks. When he returned, the plant had died.



Which of the following could possibly explain why Ahmad's plant died?

- A It did not receive air.
- B It was not given water.
- C It was not given fertiliser.
- D It did not receive sunlight.

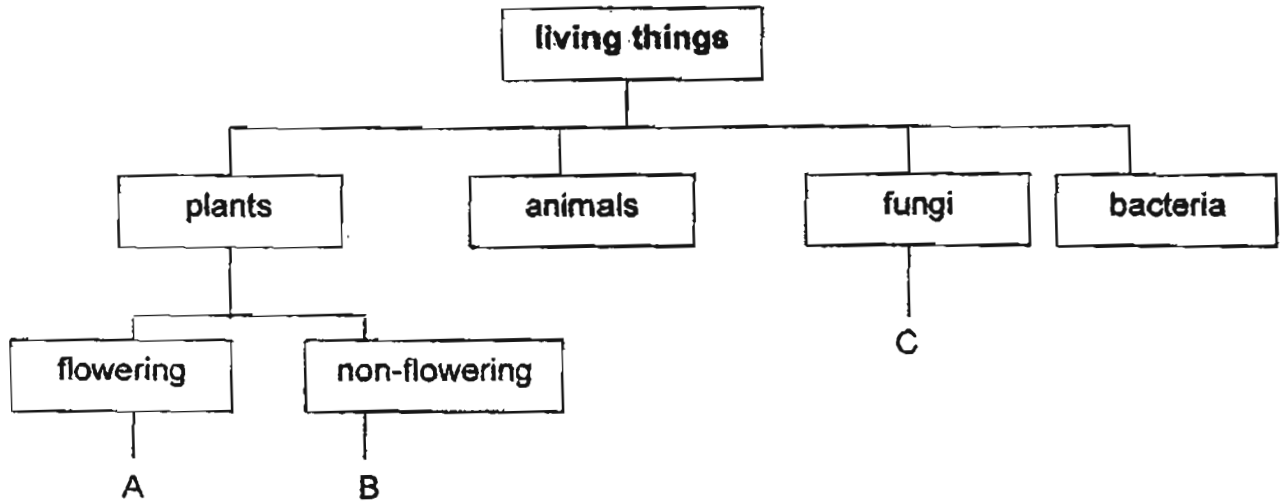
(1) B only

(2) C only

(3) A and D only

(4) B, C and D only

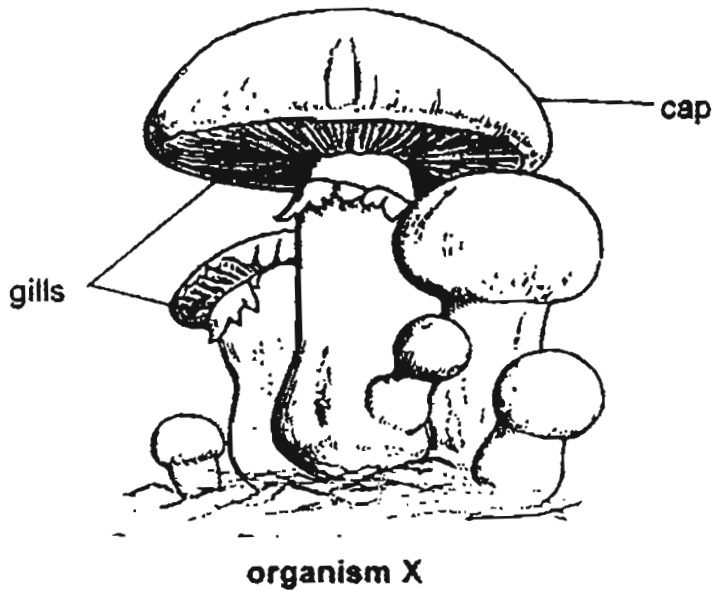
12. The diagram below shows how living things can be grouped.



Based on the information above, which one of the following identifies A, B and C correctly?

	A	B	C
(1)	papaya	mimosa	puff ball
(2)	rain tree	toadstool	yeast
(3)	water lily	staghorn fern	mushroom
(4)	bracket fungus	bread mould	bird's nest fern

13. The diagram below shows a group of organism X.



Z is found on the gills of X.

What is the function of Z?

- (1) It bears flowers.
 - (2) It helps X to reproduce.
 - (3) It helps X to make its own food.
 - (4) It helps X feed on dead plants and animals.
14. Ceramic is usually used for tiling the floor as well as bathroom walls in our houses.
- Which one of the following properties best describes the reason for its usage?
- (1) It is flexible.
 - (2) It breaks easily.
 - (3) It allows light to pass through it easily.
 - (4) It is durable and can withstand scratches.

15. Plastics are used to make tanks to keep fish.

Which of the following are possible reasons for using plastics to make such tanks?

- A It is light.
- B It is flexible.
- C It is waterproof.
- D It does not break easily.

- (1) A and C only
- (2) B and D only
- (3) A, B and C only
- (4) A, C and D only

16. Dinah made some observations of four materials: A, B, C and D.

She recorded her observations in the table below.

A tick (✓) in the box shows the observation Dinah made of the material.

material	A	B	C	D
It is waterproof.	✓	✓	✓	
It is transparent.	✓			
It can be stretched.			✓	✓
It breaks easily when dropped.	✓			

Which one of these materials is most suitable for making T-shirts?

- (1) A
- (2) B
- (3) C
- (4) D

17. Ramesh collected some rock samples, P, Q, R and S, during a hiking trip. Each of these samples was scratched using a toothpick, a plastic fork and a metal ruler, one at a time, to find out how hard each was.

Ramesh's results are shown in the table below.

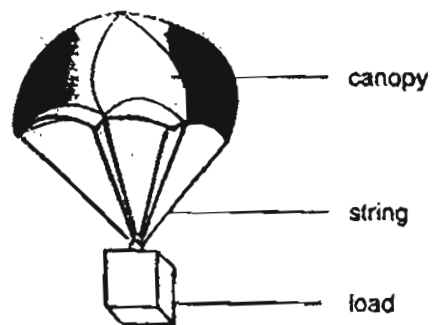
A tick (✓) in the box shows the presence of scratches on the rock sample.

rock sample	can be scratched with a toothpick	can be scratched with a plastic fork	can be scratched with a metal ruler
P		✓	✓
Q			✓
R			
S	✓	✓	✓

Which one of the following shows the correct arrangement of these rock samples in order of their hardness?

	→ increasing hardness			
(1)	P	Q	R	S
(2)	P	S	Q	R
(3)	R	Q	P	S
(4)	S	P	Q	R

18. Siew Leng wanted to find out if the size of the canopy of the toy parachute will affect the time taken for the load to fall 10 m to reach the ground.



Which one of the following variables should Siew Leng change during her experiment?

- | | |
|----------------------|------------------------|
| (1) size of canopy | (2) mass of the load |
| (3) length of string | (4) material of canopy |

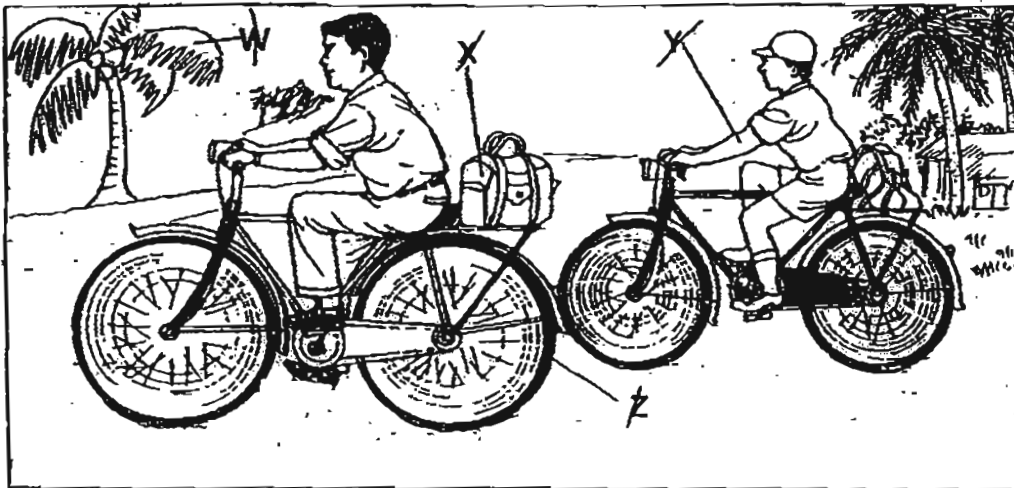
Name : _____ Index No: _____ Class: Primary 3 _____

SECTION B (24 marks)

For questions 19 to 30, write your answers clearly in the spaces provided.

The number of marks available is shown in the brackets [] at the end of each question or part question.

19. The picture below shows some living and non-living things labelled W, X, Y and Z.



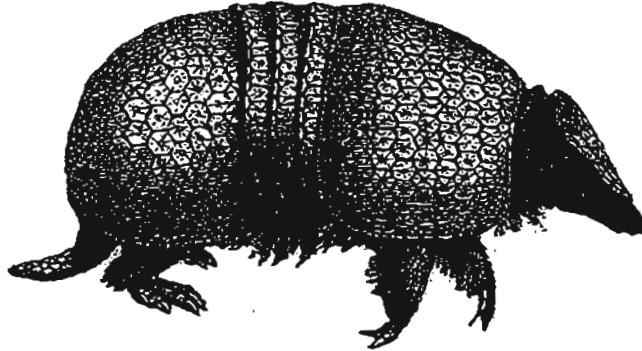
In the table below, classify the things, W, X, Y and Z.

Write letters W, X, Y and Z **ONCE** only.

[2]

things	
living	non-living

20. The picture below shows a mammal which is able to roll itself into a ball to escape from danger.

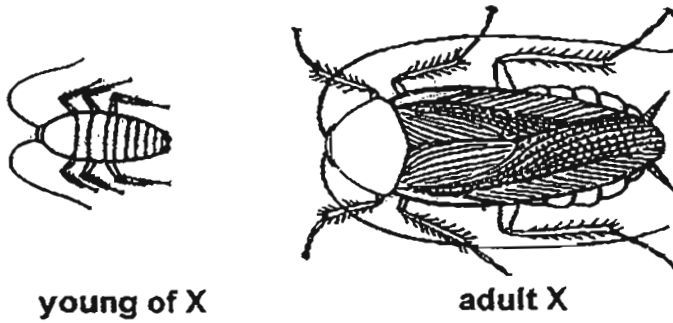


Based on the information above, answer the following questions:

- (a) State the characteristic of living things which is demonstrated when the mammal rolls itself into a ball to escape from danger. [1]

- (b) Besides moving about to escape from danger, state one **OTHER** reason why it needs to move about. [1]

21. The young and adult of organism X are shown below.



Based on your observations of these organisms above, state two similarities between the young and the adult of X: [2]

SIMILARITY 1	
SIMILARITY 2	

22. Three different types of animals, A, B and C, are shown below.



A



B



C

Based on your observations of these animals, which one of these animals is an insect?

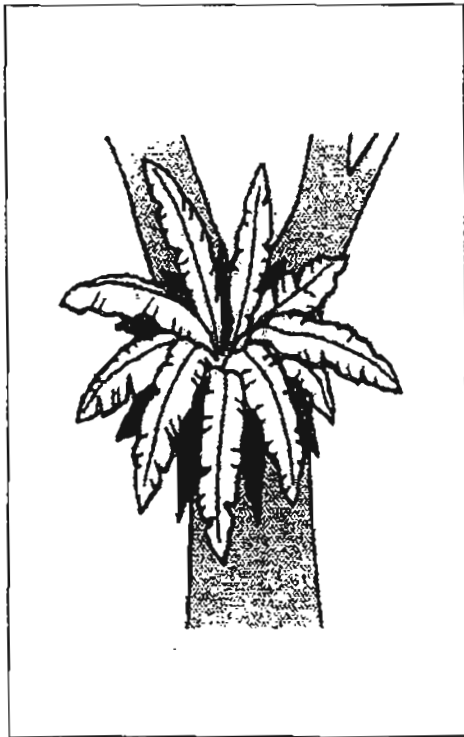
Write letter A, B or C **ONLY**.

Give a reason for your answer.

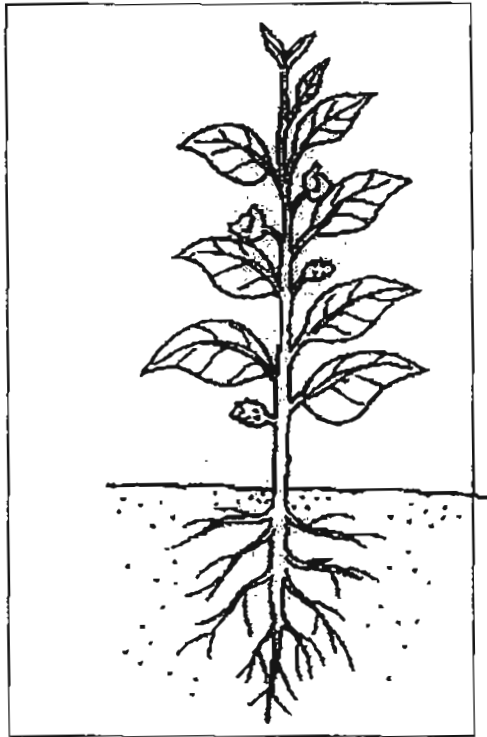
[1]

animal	reason

23. The pictures below show two plants, A and B.



plant A



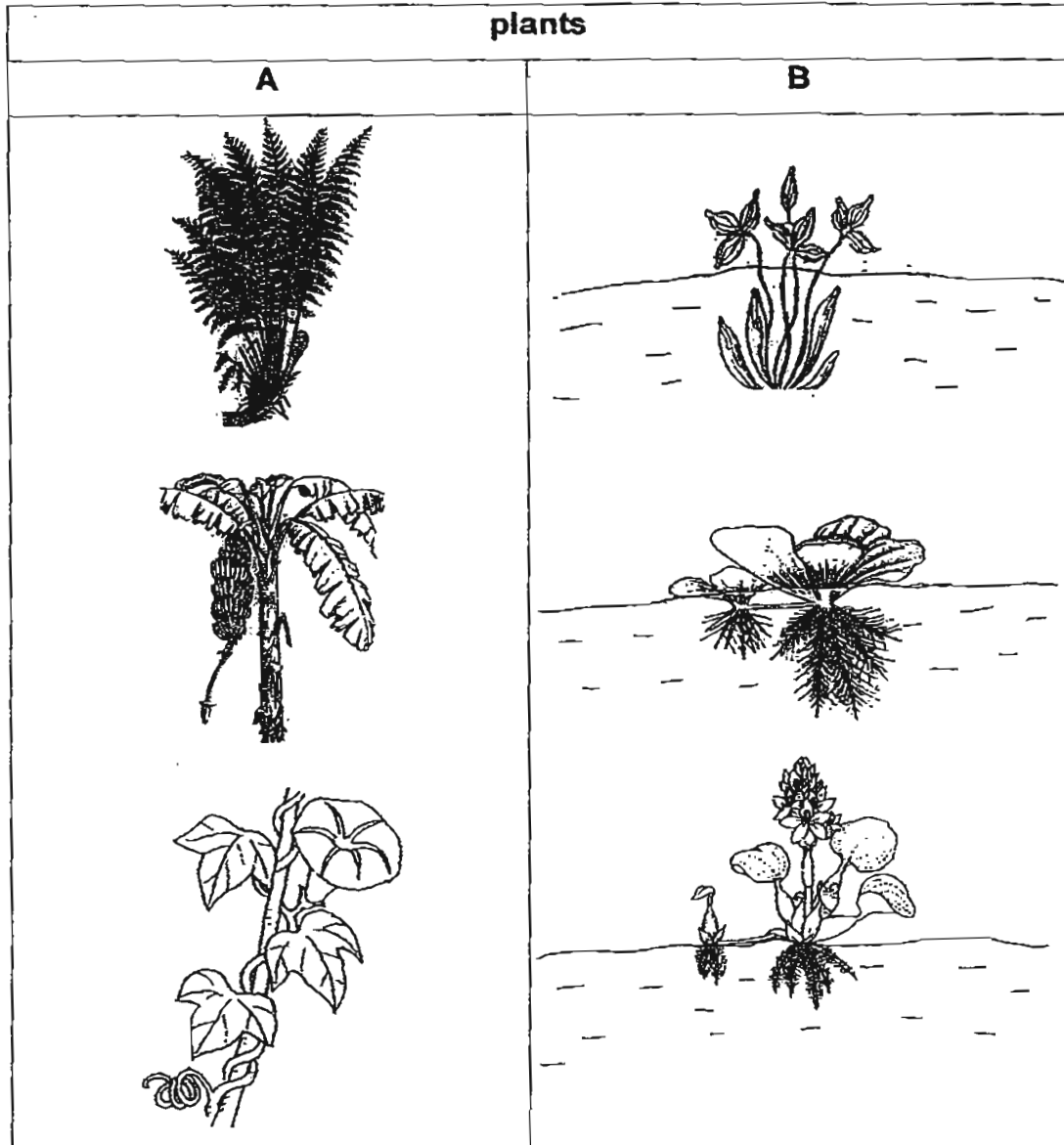
plant B

(a) How does each of these plants reproduce? [2]

A	
B	

(b) Name **ANOTHER** plant that reproduces in the same way as B. [1]

24. The plants below are grouped according to their common characteristics.



Based on your observations, answer the following questions:

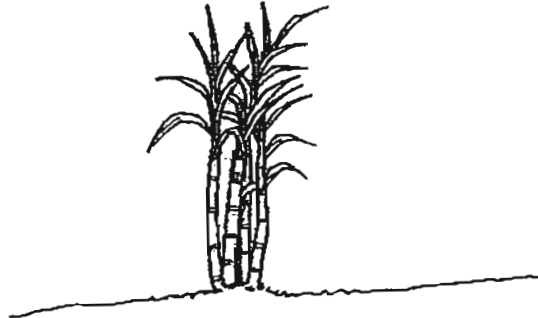
(a) Write a suitable sub-heading for each of the following groups of plants: [1]

A	B

To be continued on the next page

continued from page 20

Bala spotted the following plant in his garden.



(b) In which group, A or B, would Bala place the plant? [1]

25. The table below gives information on two different types of organisms, X and Y.

A tick (✓) in each box indicates the characteristic which the organism possesses.

characteristic	organisms	
	X	Y
It grows on land.	✓	✓
It makes its own food.		✓
It reproduces by spores.	✓	✓
It feeds on both dead and living plants and animals.	✓	

Based on the information given above, answer the following questions:

- (a) Which one of these organisms, X or Y, is possibly a fungus?

Give a reason for your answer.

[1]

- (b) State one difference between X and Y.

[1]

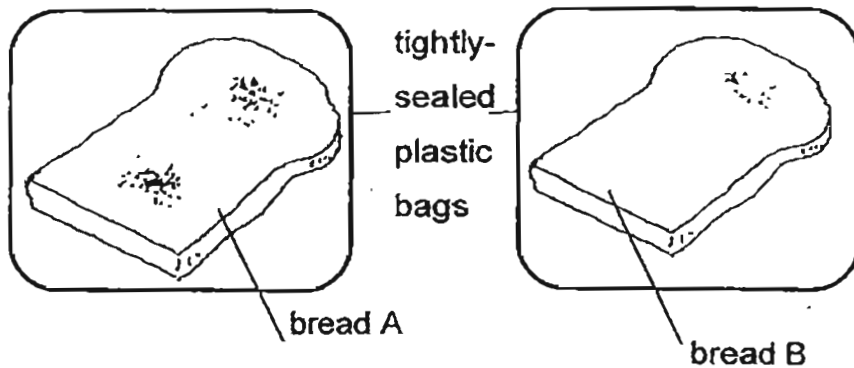
26. The following statements describe the bacteria and yeasts.

Put a cross (X) in the appropriate box(es) which is/ are **NOT** correct. [2]

	statement	put a cross (X) here
(a)	Yeasts are a type of fungi.	
(b)	All bacteria are harmful to man.	
(c)	Bacteria and yeasts are micro-organisms.	
(d)	All bacteria and yeasts are reproduced by seeds.	

27. James put each slice of bread, A and B, taken from the same loaf, in identical tightly-sealed plastic bags. One slice of bread had been sprinkled with water. The plastic bags of bread were placed in the cupboard for a week.

After a week, James observed the slices of bread and drew the diagrams below to show his observations.



Based on the information above, answer the following questions:

- (a) Which slice of bread, A or B, was most likely sprinkled with water?

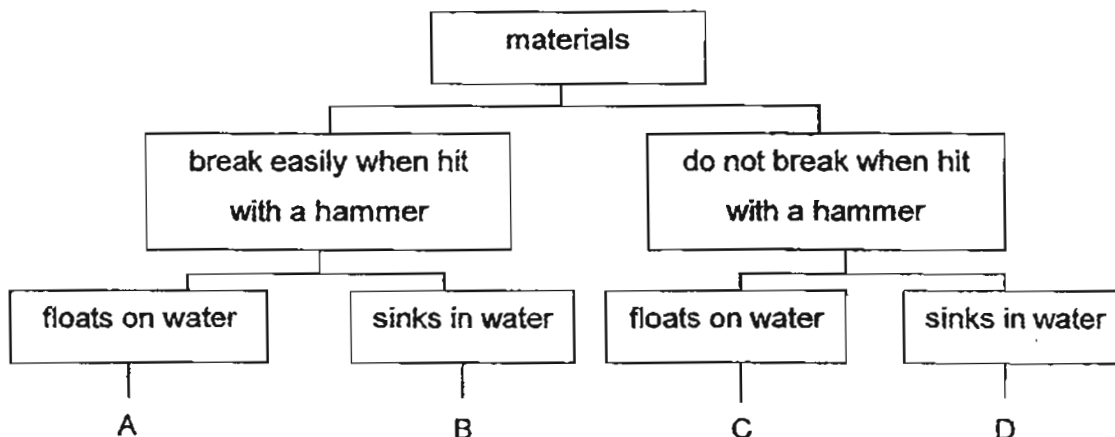
Explain your answer.

[1]

- (b) Besides air and water, name **ANOTHER** condition necessary for bread mould to grow in James' experiment.

[1]

28. The diagram below shows how some materials are classified based on their common properties.



Based on the information above, answer the following questions:

(a) State the common property of materials B and D. [1]

(b) Which one of the following materials is likely to be "glass"?

Write letter A, B, C or D ONLY.

State one property of glass. [1]

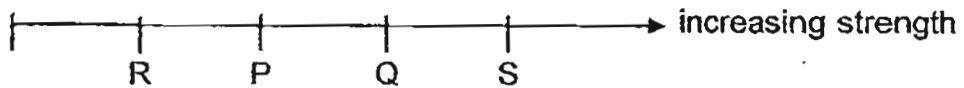
letter	property of glass

29. Farah conducted an experiment to compare the strength of different types of materials.

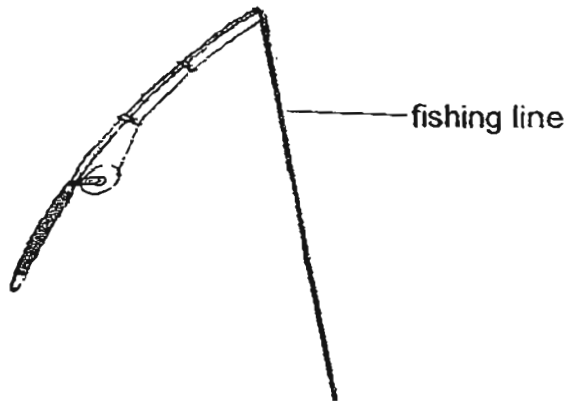
She recorded her findings in the table as shown below.

type of material	flexibility
P	no
Q	yes
R	yes
S	no

Farah arranged the strength of these materials as follows:



Farah wants to make a fishing line as shown below.



Based on the information above, which one of these materials, P, Q, R or S, should Farah use to make a fishing line?

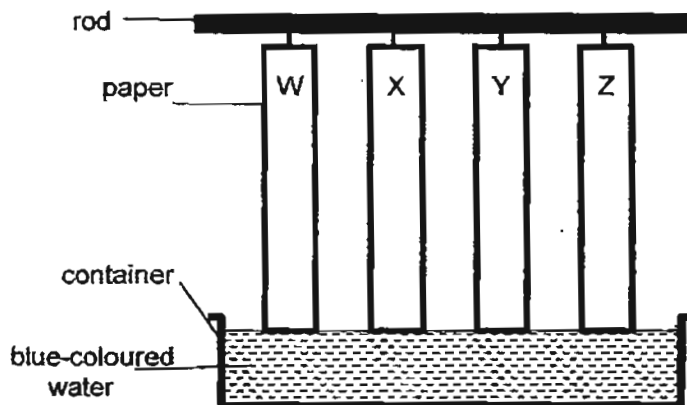
Give a reason for your answer.

[2]

material	reason

30. Thomas weighed 4 different types of paper, W, X, Y and Z, of the same thickness and size, **ONE** at a time.

The pieces of paper, each suspended by a string on a rod, were dipped into a container of blue-coloured water as shown in the diagram below.



After 3 minutes, Thomas removed the pieces of paper and weighed each of them. All the pieces of paper were heavier than before. He recorded the increase in mass of each paper as shown in the table below.

paper	increase in the mass of paper (g)
W	2
X	4
Y	1
Z	3

Based on the information above, which type of paper could possibly be used to absorb the most amount of oil?

Write letter W, X, Y or Z **ONLY**.

Give a reason for your answer.

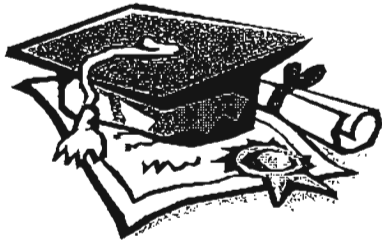
[2]

type of paper	reason

- END OF PAPER -

Setters: Ms. M. Yeo, Mdm Roziana



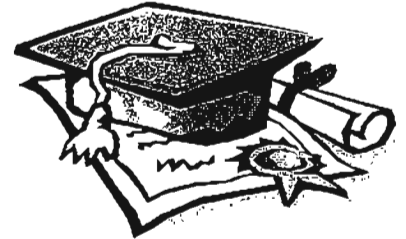


ANSWER SHEET

EXAM PAPER 2011

**SCHOOL : RAFFLES GIRL'S
SUBJECT : PRIMARY 3 SCIENCE**

TERM : SA 1



Section A

Q1	Q2	Q3	Q4	Q5	Q6	Q7	Q8	Q9	Q10	Q11	Q12	Q13	Q14	Q15	Q16	Q17
1	3	3	2	4	4	1	4	3	1	1	3	2	4	4	4	4

Q18
1

Section B

Q19)

Things	
Living	Non-living
W	Z
Y	X

**Q20 a) Living things respond to changes.
b) Find food to eat.**

Q21)

SIMILARITY 1	They have six legs
SIMILARITY 2	They have two feelers

Q22) A . It has six legs and three body parts.

**Q23 a) A . Reproduce by spores.
B. reproduce by seeds.**

(b) Sunflower

**Q24 a) A. land plant
B. Water plant**

(b) Group A

Q25 a) Organisms X because fungus reproduce by spores and feeds on both dead and living plants

(b) Y makes its own food but X does not makes its own food.

Q26)

	Statement	put a cross (X) here
(a)	Yeasts are a type of fungi.	
(b)	All bacteria are harmful to man.	X
(c)	bacteria and yeasts are micro-organisms.	
(d)	All bacteria and yeasts are reproduced by seeds.	X

Q27 a) Bread A because there are more bread mould growing on it.

b) warmth

Q28 a) They sinks in water.

b) B. Glass break easily when hit with a hammer and sinks in water.

Q29) Q . It is longer and has flexibility suitable to use to make a fishing line.

Q30) X. It absorb the most amount of oil because the mass of paper is 4g and is the heaviest among all the papers.

--- end paper ---