

TAO NAN SCHOOL

PRIMARY 3 SCIENCE MID-YEAR EXAMINATION – 2010

Name : \_\_\_\_\_ ( ) Date : 12 May 2010

Class : P3 \_\_\_\_\_

Time : 8.00 a.m. to 9.15 a.m.

Booklet A

INSTRUCTIONS TO CANDIDATES

Do not open this booklet until you are told to do so.

Follow all instructions carefully.

Answer all questions.

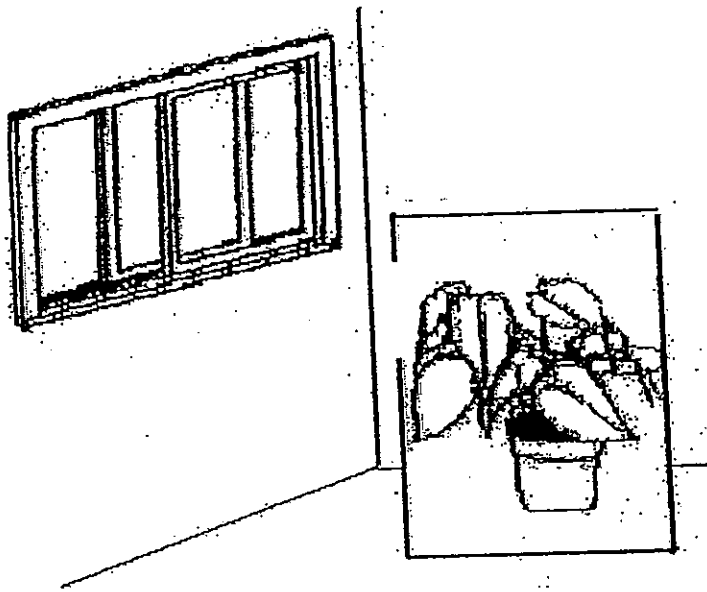
	Score	Marks
Booklet A		60
Booklet B		40
Total		100

Parent's Signature : \_\_\_\_\_

Booklet A (30 x 2 marks)

For each question, choose the most suitable answer and shade its corresponding oval (1, 2, 3 or 4) in the optical response sheet.

- 1) Tom left his pot of plant by an opened window for a week. The plant grew as shown below. Which characteristic of a plant is shown?



- (1) A plant needs air.
- (2) A plant needs food.
- (3) A plant needs water.
- (4) A plant needs sunlight to make food.

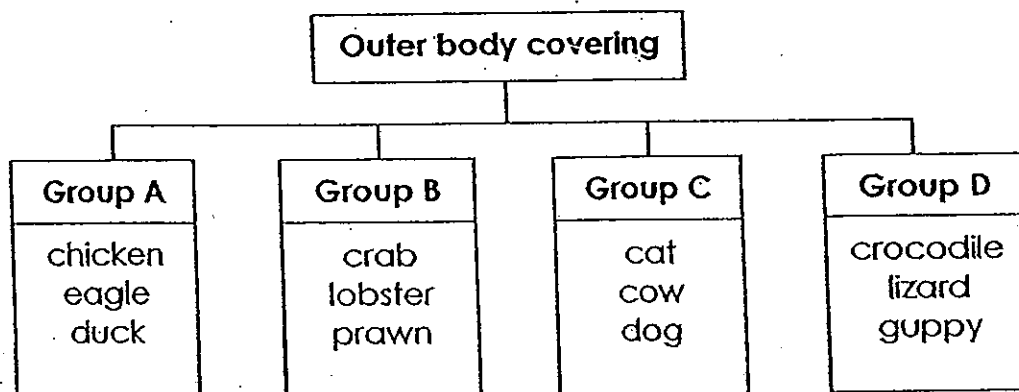
2) Lishan kept two adult hamsters in a cage. After 2 months, the number of hamsters had increased.  
Which of the following explains the increase in the number of hamsters?

- (1) The hamsters grew..
- (2) The hamsters reproduced.
- (3) The hamsters were male and female
- (4) The hamsters had air, water and food.

3) Which of the following is made from things that were **never** alive?

- (1) iron bar
- (2) cotton shirt.
- (3) leather belt.
- (4) paper plate

4) Study the classification chart below.



In which group would you put the **snail**?

- (1) Group A
- (2) Group B
- (3) Group C
- (4) Group D

5) Which of the following lives on land but lays eggs in water?

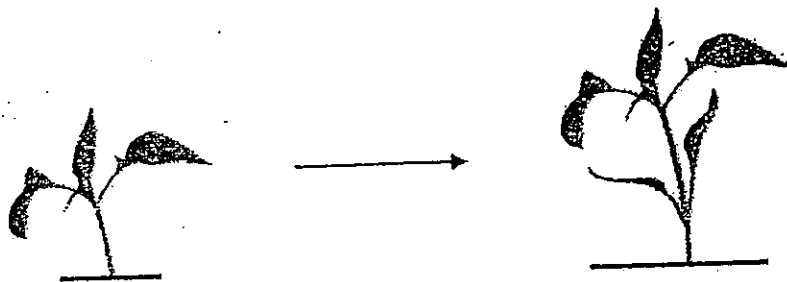
- (1) turtle
- (2) penguin
- (3) mosquito
- (4) crocodile

6) How are the animals below classified?

Group X	Group Y
Lion	Cow
Shark	Deer
Crocodile	Rabbit
Polar bear	Horse

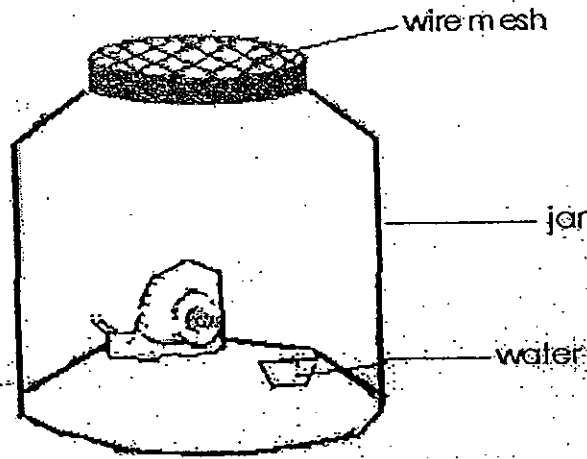
- (1) According to the food they eat.
- (2) According to the place they stay.
- (3) According to the way they reproduce
- (4) According to the outer body covering.

7) Which characteristic of a living thing does the diagram below show?



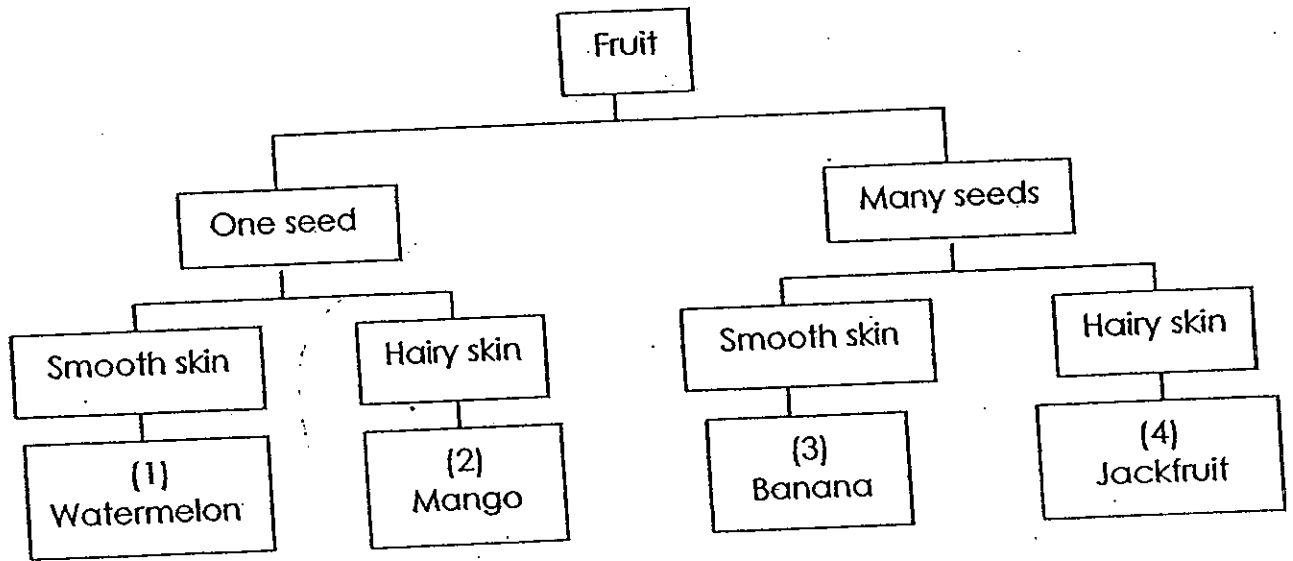
- (1) A plant can grow.
- (2) A plant can move.
- (3) A plant can reproduce.
- (4) A plant can photosynthesize

8) A snail is placed in a jar with a wire mesh placed over it. The snail is given water. After two weeks, it died. Explain why the snail died.

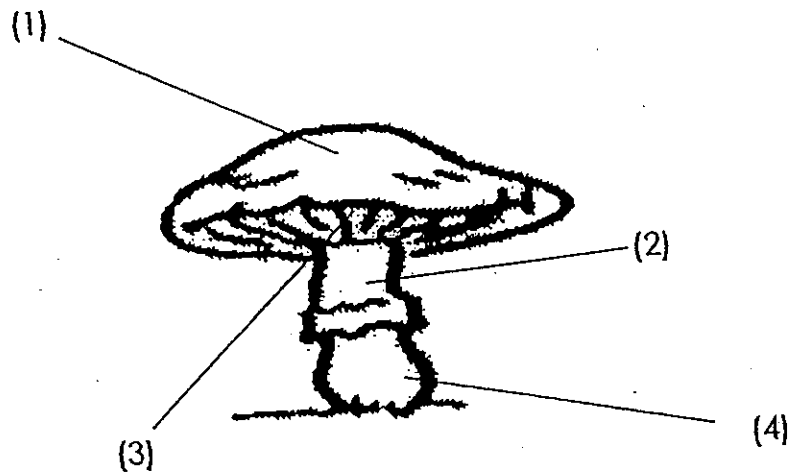


- (1) It was not given air.
- (2) It was not given sunlight.
- (3) It was not given mineral salts.
- (4) It was not given green plants

9) Which fruit is grouped correctly?



10) Where are the spores in the mushroom?



11) Which of the following about the Bird's Nest Fern and the butterfly is / are true?

- A: Both are living things.
- B: Both can move on their own.
- C: Both have the ability to reproduce.
- D: Both need only air and food to survive.

- (1) A and B only
- (2) C and D only
- (3) A and C only
- (4) B and D only

12) A fish has scales on its body. What is the main purpose of the scales?

- (1) To protect its body.
- (2) To keep the fish warm.
- (3) To attract the opposite sex.
- (4) To hide the fish from its enemies.

13) Which of the following has flowers which grows singly?

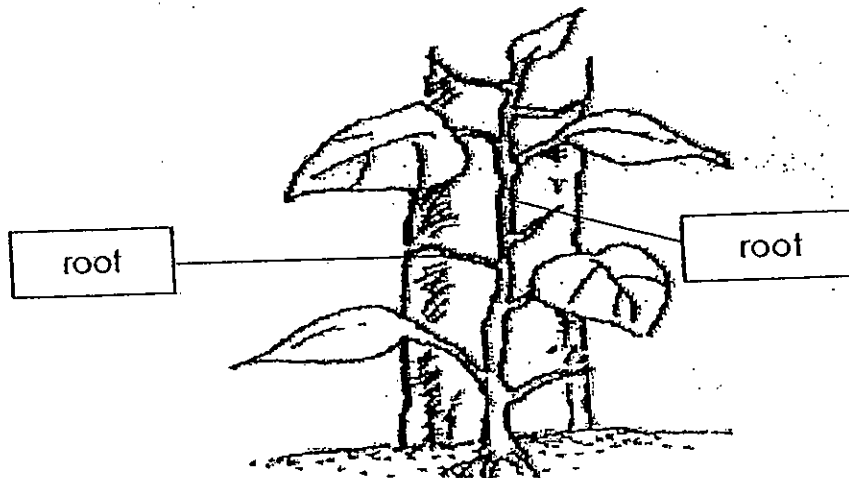
- (A) rose plant
- (B) orchid plant
- (C) ixora plant
- (D) bougainvillea

- (1) A and B only
- (2) A and D only
- (3) B and C only
- (4) C and D only

14) Mr Lim took his pupils to a plant exhibition. From a distance, there was a strong smell of rotting meat coming from a plant. Which plant did the smell come from?

- (1) Hibiscus plant
- (2) Jasmine plant
- (3) Rafflesia plant
- (4) Frangipani plant

15) Study the money plant. The main function of the root is to take in water. What is the other function of the root?



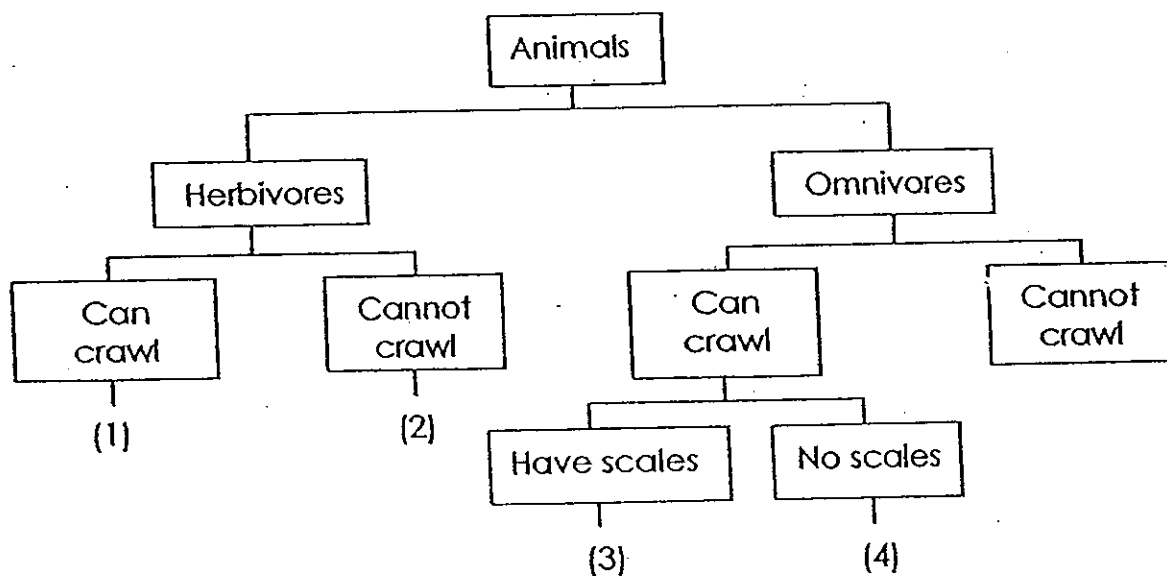
- (1) To store food.
- (2) To take in water.
- (3) To climb for sunlight.
- (4) To grow into a new plant.



16) Which of the following are used in making cheese and yoghurt?

- (1) Fungi
- (2) Viruses
- (3) Bacteria
- (4) Maggots

17) Andrew saw an animal that crawls. It feeds on fruits only and has an outer covering of scales. With reference to the classification chart below, which of the following can Andrew place the animal in?

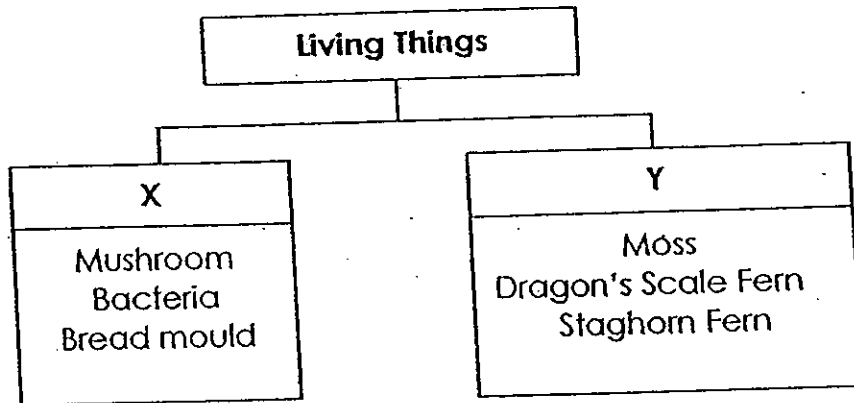


18) A cleaner saw a flock of crows pecking at a packet of left-over food in a dustbin. He yelled at them. They flew away. What does this show?

- (A) Crows need food.
- (B) Crows can reproduce.
- (C) Crows move by themselves.
- (D) Crows respond to changes around them.

- (1) A, B and C only
- (2) A, B and D only
- (3) A, C and D only
- (4) B, C and D only

19) Study the classification chart below.



Which of the following is the heading for X and Y?

	X	Y
(1)	Reproduce from spores	Reproduce from seeds
(2)	Can move on its own	Cannot move on its own
(3)	Depend on others for food	Make its own food
(4)	Look for food	Do not look for food

20) Which of the following is not a part of a Betta Splenden?

- (1) Scales
- (2) Feelers
- (3) Dorsal fin
- (4) Gill cover

21) The table below shows how two animals, P and Q, are classified.

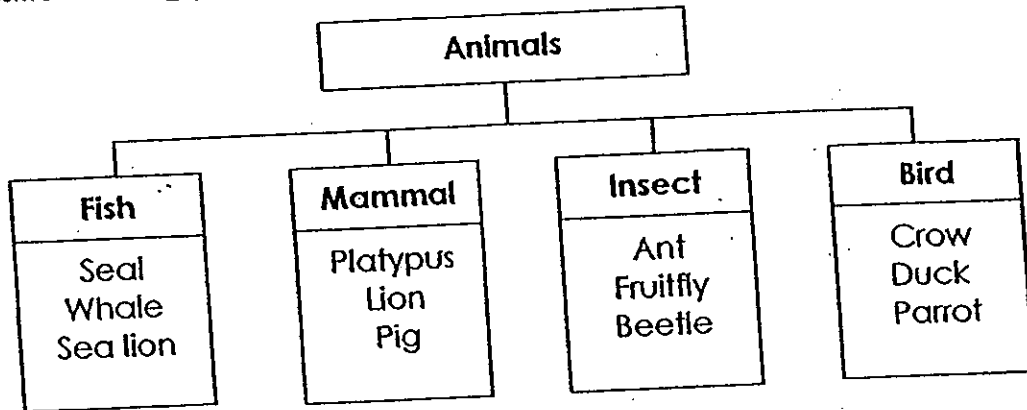
With feathers			
Can Fly		Cannot Fly	
Give birth to young alive	Lay eggs on land	Give birth to young alive	Lay eggs on land
	P		Q

Which of the following are true?

- A: P can fly but Q cannot fly.
- B : P and Q are birds.
- C: P and Q give birth to young alive.
- D: P and Q lay eggs on land.

- (1) A and C only
- (2) B and D only
- (3) A, B and D only
- (4) B, C and D only

22) Study the classification chart below. Which group of animals has been classified wrongly?



- (1) Bird
- (2) Fish
- (3) Insects
- (4) Mammal

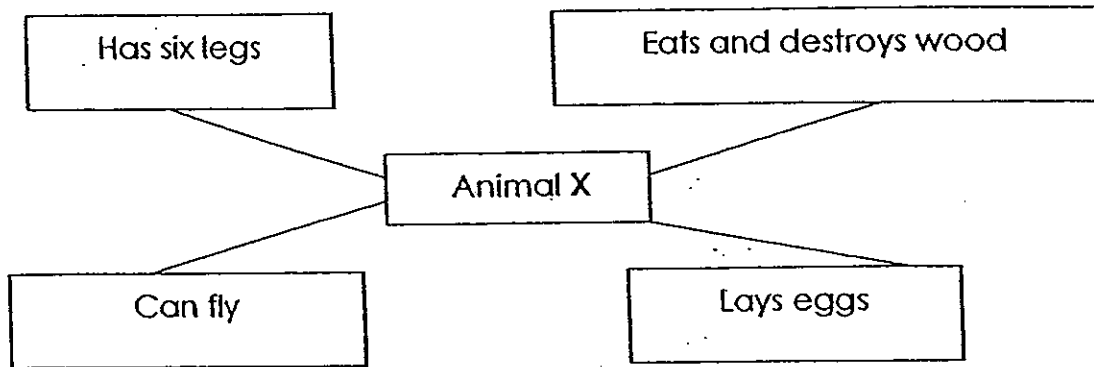
23) Mary observed some animals. She recorded her observations in the table below.

Observation	Ant	Spider	Butterfly	Mosquito
Has antennae?	Yes	No	Yes	Yes
Has three pairs of legs?	Yes	No	No	Yes
Has three body parts?	Yes	Yes	Yes	No

Which of the animals is accurately observed?

- (1) Ant
- (2) Spider
- (3) Butterfly
- (4) Mosquito

24) The diagram below shows the characteristics of Animal X.



What can Animal X be?

- (1) Termite
- (2) Ladybird
- (3) Damselfly
- (4) Grasshopper

25) Which of the following about bacteria are true?

- A: Bacteria can be useful or harmful.
- B: Bacteria are living things.
- C: Bacteria are micro-organisms.
- D: Bacteria can be found on us

- (1) A and B only
- (2) C and D only
- (3) B, C and D only
- (4) A, B, C and D

26) How do fungi obtain their food?

- (1) They find their own food.
- (2) They make their own food.
- (3) They take in mineral salts from the soil for food.
- (4) They depend on other plants and animals for food.

27) Danny wanted to make a shelf to put 50 potted plants in his garden. What properties should the shelf have to support the potted plants?

- A: It must be hard.
- B: It must be absorbent.
- C: It must be flexible.
- D: It must be durable.

- (1) A and B only
- (2) A and D only
- (3) B and C only
- (4) C and D only

28) In what way are the materials used to make the things below similar?



Cotton shirt



Rubber wheel



Newspaper

- (1) They are from plants.
- (2) They are man-made.
- (3) They are from animals
- (4) They are from the ground.

29) There are four bags that are made from different materials.



Bag A  
Silk



Bag B  
Plastic



Bag C  
Wool

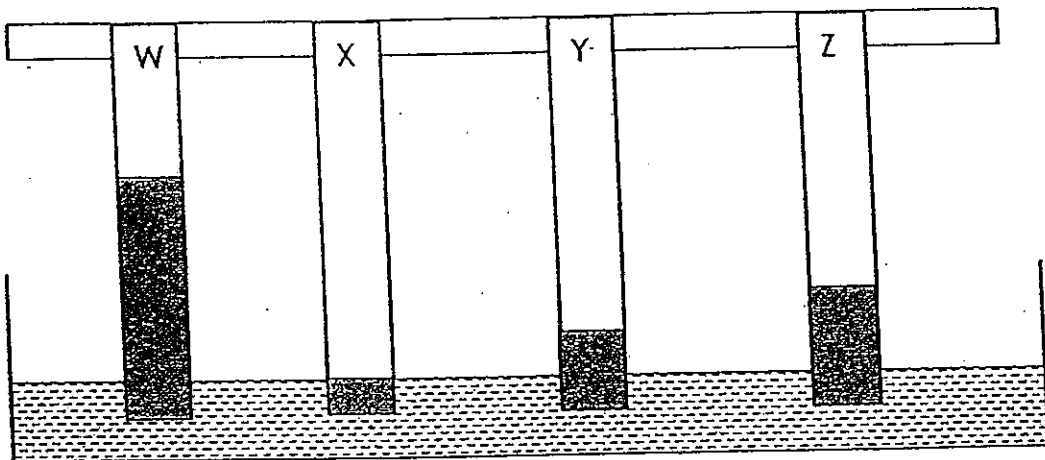


Bag D  
Cotton

Which bag will be most suitable if you are going for a swim? Why?

- (1) Bag A because it is light.
- (2) Bag B because it is waterproof.
- (3) Bag C because it absorbs water.
- (4) Bag D because it keeps you warm.

30) W, X, Y and Z are thin strips of different materials. They were soaked in water. After ten minutes, the strips absorb water to different levels as shown in the diagram below. Which strip is the **most** absorbent material?



- (1) W
- (2) X
- (3) Y
- (4) Z

**TAO NAN SCHOOL  
PRIMARY 3 SCIENCE MID-YEAR EXAMINATION 2010**

Name : \_\_\_\_\_ (

Date: 12 May 2010

Class : Pr 3 \_\_\_\_\_

Time: 8.00 a.m. to 9.15 a.m.

**Booklet B**

**INSTRUCTIONS TO CANDIDATES**

Do not open this booklet until you are told to do so.

Follow all the instructions carefully.

Answer all questions.

	Score	Marks
Booklet B		40



Section B (40 marks)

Write your answers in the space provided.

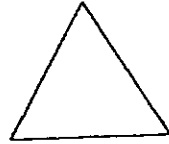
31. Study the figures below.



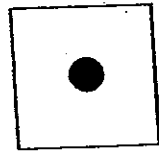
A



B



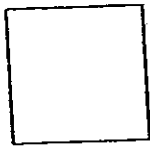
C



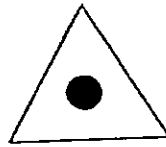
D



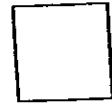
E



F



G

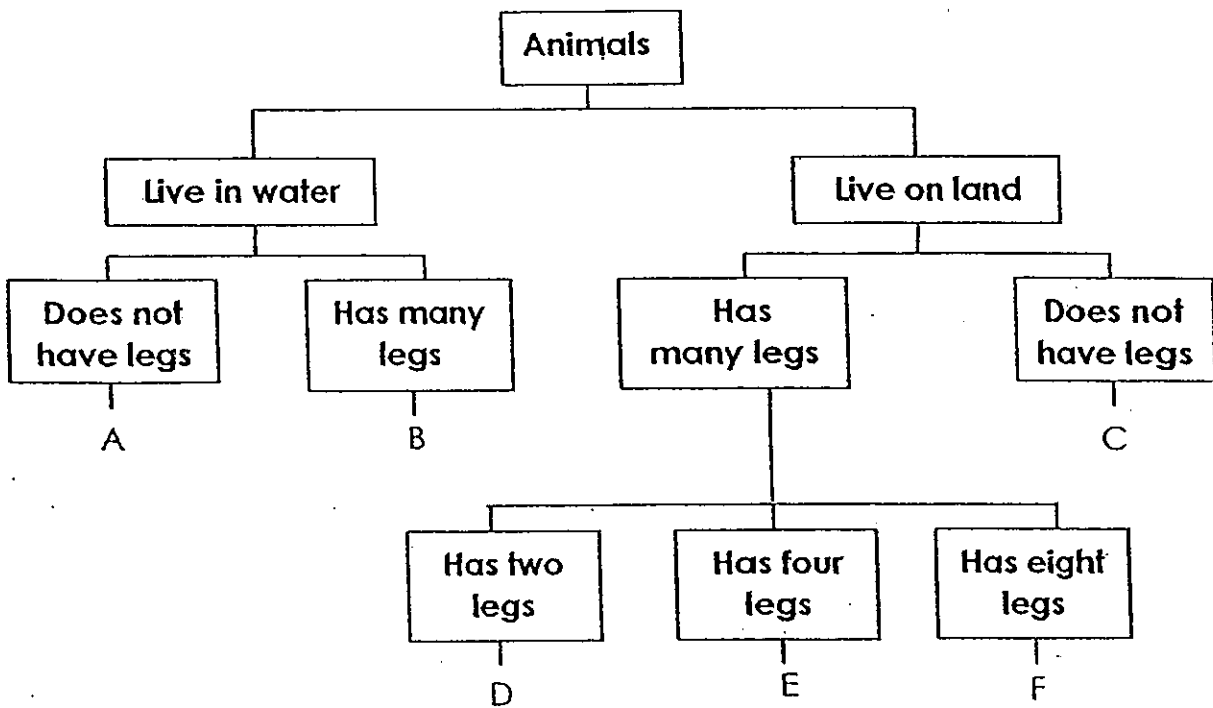


H

Complete the classification table below to show how the figures can be grouped.  
(2 marks)

A, B, C, D, E, F, G, H	
A, C,	
A, C	

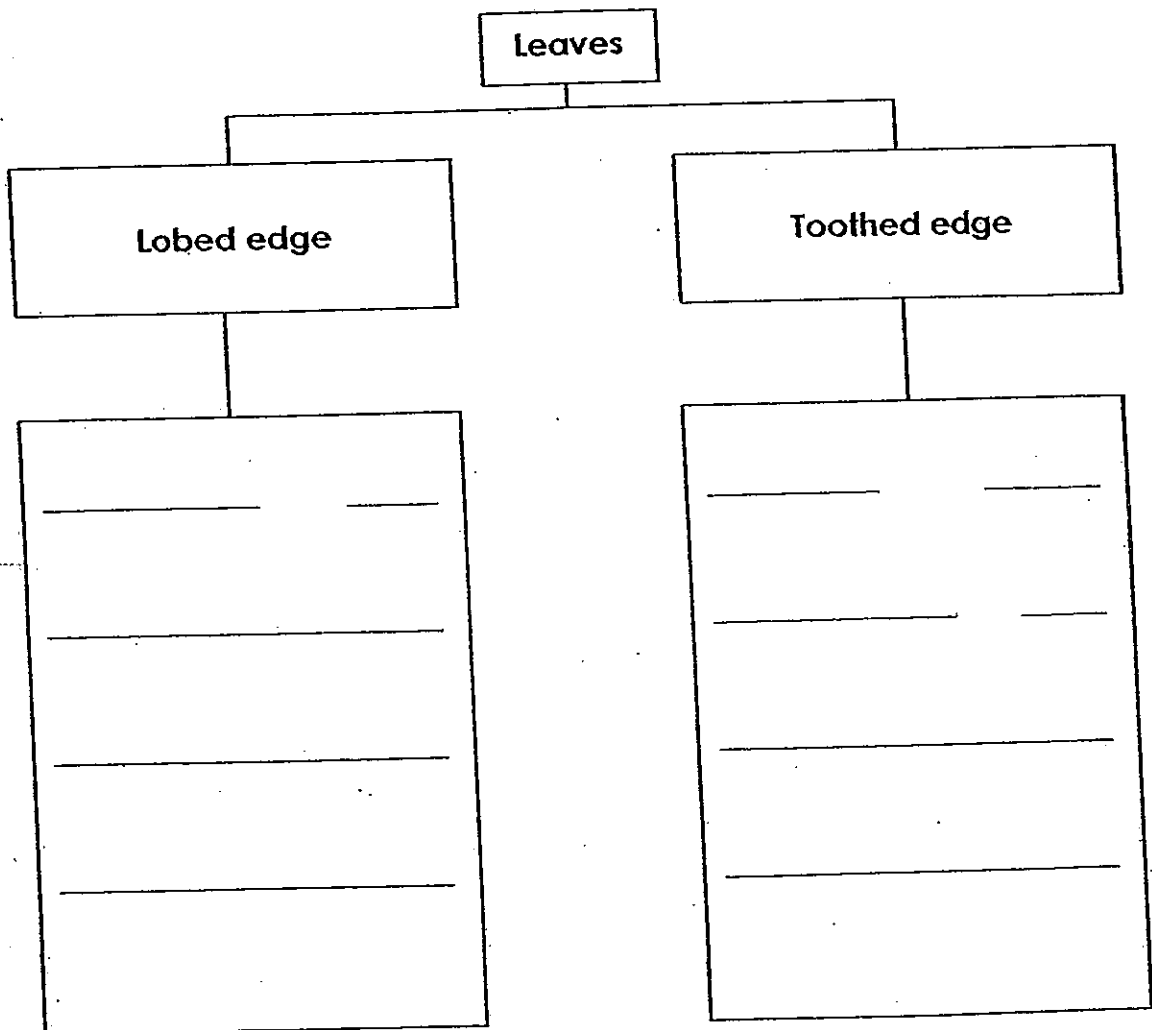
32. Study the classification chart below.



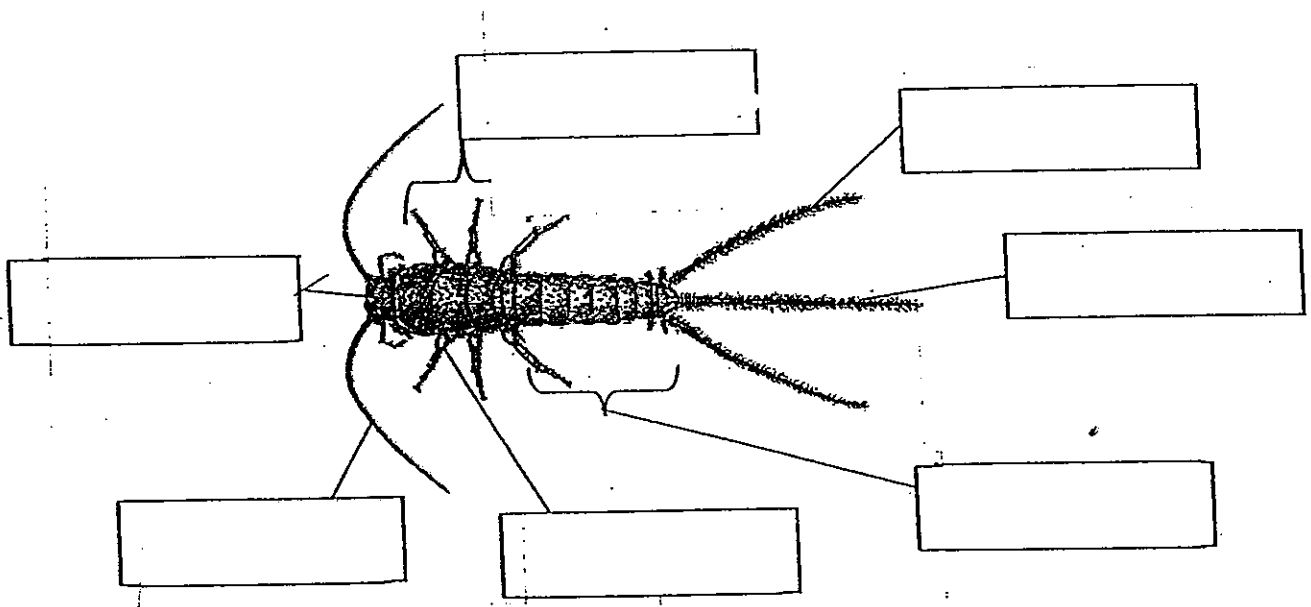
Match the letters A, B, C, D, E and F to the animals they represent in the table below. Write the suitable letter in the box provided. (3 marks)

Animals	Letter
Spider	
Polar bear	
Cobra	
Crab	
Seahorse	
Ostrich	

33. Classify the leaves below according to their edges in the classification chart below. ( 4 marks )



34. Study the picture of the silverfish below.



a) Identify its abdomen, thorax, head and legs. Write the words in the suitable boxes provided. (2 marks)

b) The silverfish is an insect. Explain why. (1 mark)

---

---

---

---

35. What material are raincoats made of? Explain why. ( 2 marks )

---

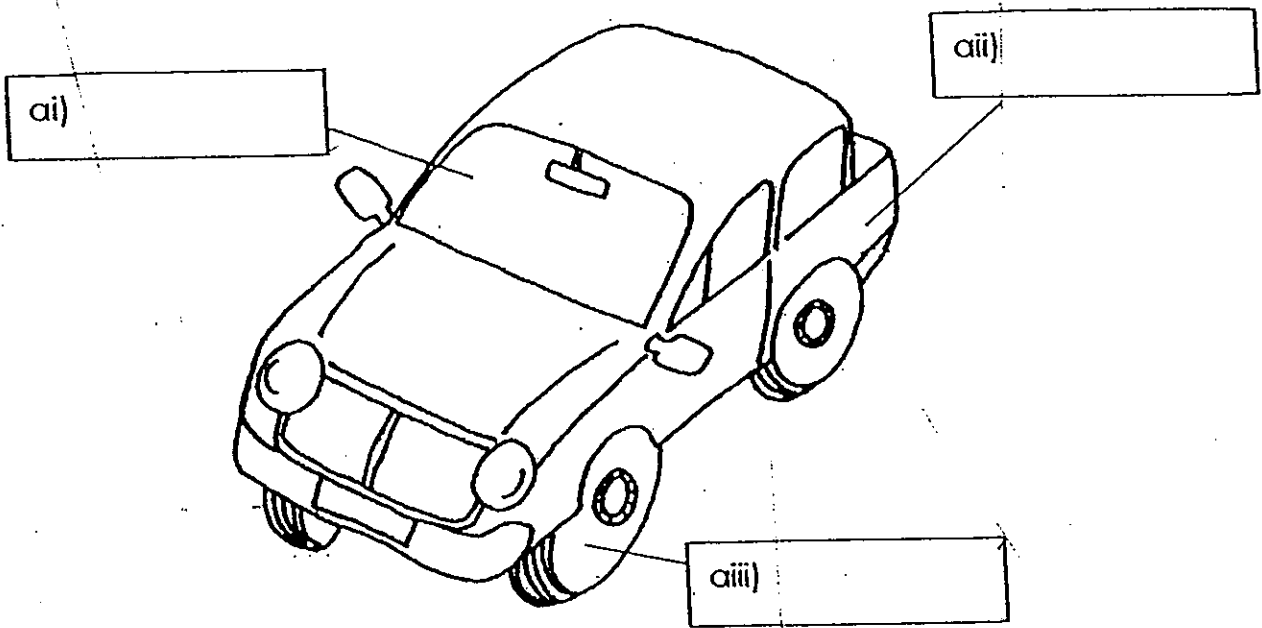
---

---

36. Write 'T' if the statement is true or 'F' if the statement is false in the boxes provided. Edit the statements that are false and write the correct statements on the lines provided. ( 4 marks )

Statement	T/F
i) Plants make food in the presence of light. <hr/> <hr/>	
ii) All plants have flowers. <hr/> <hr/>	
iii) The stem carries water, food and mineral salts to all parts of the plant. <hr/> <hr/>	
iv) After the fruits are developed, the flowers bloom. <hr/> <hr/>	

37. Mr Tan drives his car to work everyday.



(a) Write the most suitable material used to make the parts of the car in the boxes labelled above. (1 mark)

(b) Explain why the material that you have chosen in box (ai) is the most suitable. (1 mark)

---

---

(c) Mr Tan's son, Ben, said that their car is a living thing because it can move on its own. Is he correct? Explain why. (1 mark)

---

---

---

38. Look at the picture of an eagle below.



eagle

(a) Based on the picture, state **one observable** characteristic the eagle has. (1 mark)

---

---

(b) How does an eagle reproduce? (1 mark)

---

39. Study the table below.

Groups	P	Q	R
Objects	Neck tie Handkerchief Scarf	Eraser Stapler Scissors	Coin Bracelet Gold necklace

(a) In which group should you place a ruler? (1 mark)

---

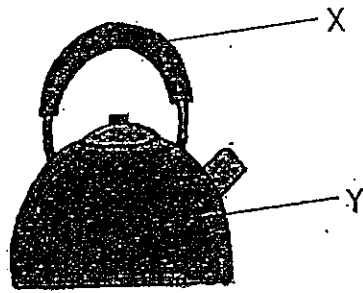
---

(b) Give a reason for your answer in (a). (1 mark)

---

---

40. The picture below shows a kettle.



(a) What is a suitable material to make the parts, X and Y, of the kettle?  
Tick (✓) the suitable material in the boxes below. (1 mark)

Part	Material		
X	<input type="checkbox"/> iron	<input type="checkbox"/>	<input type="checkbox"/> plastic
Y	<input type="checkbox"/> rubber	<input type="checkbox"/>	<input type="checkbox"/> stainless steel

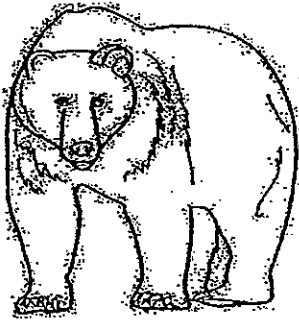
(b) Explain why you chose the material in (a) for the parts, X and Y. (2 marks)

X: \_\_\_\_\_

Y: \_\_\_\_\_



41. Look at the picture of a bear and a goldfish. How are they different? (3 marks)



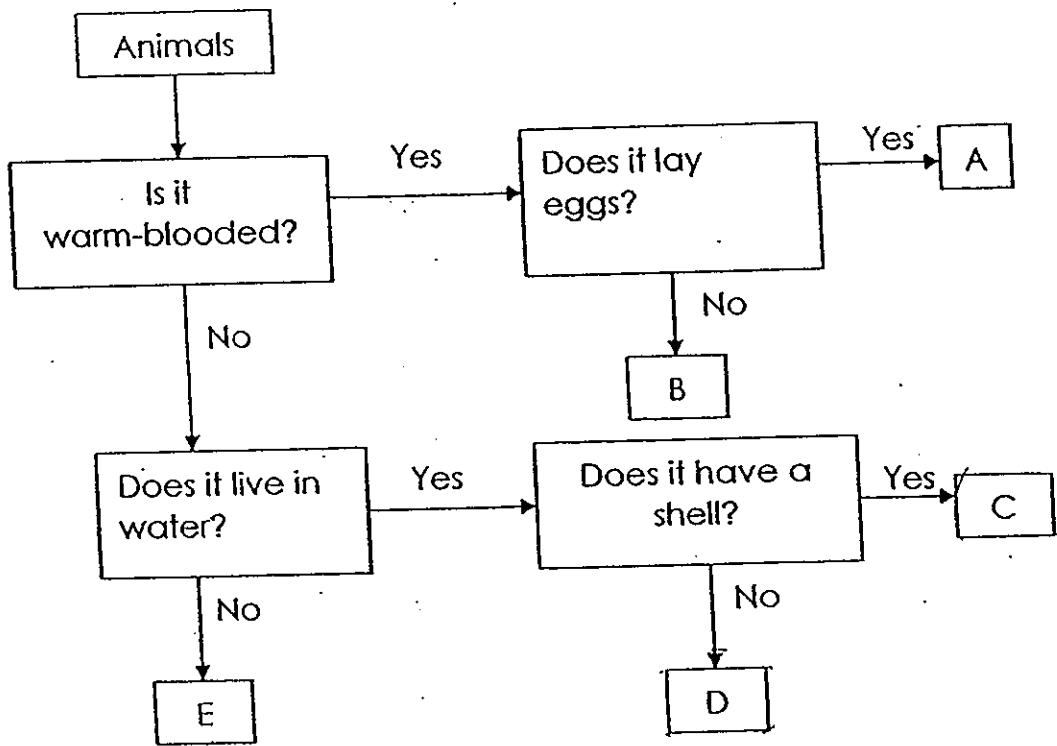
bear



goldfish

Difference between		
	bear	goldfish
a) Body covering		
b) Movement		
c) Reproduction		

42. The chart below shows the characteristics of 5 different animals represented by A, B, C, D and E.



a) Name **one** common characteristic of the animals, A and B. (1 mark)

---



---

b) Describe the animal, E. (2 marks)

---



---

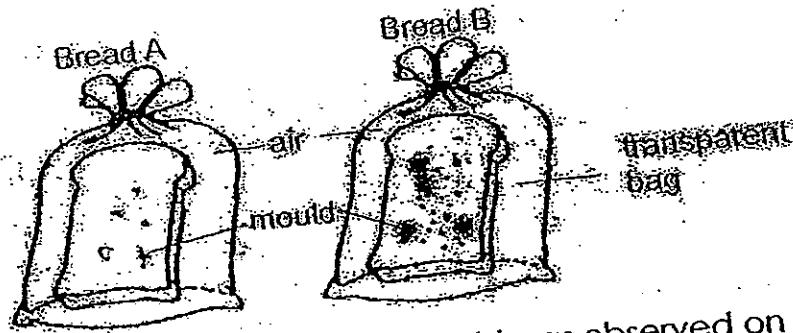
c) What is the difference between the animals, C and D? (1 mark)

---



---

43. John wanted to find out if the amount of water on the bread would affect the growth of mould.



At the end of the experiment, more mould was observed on Bread B than Bread A.

a) Put a tick (  ) in the suitable boxes to show the variables that must be kept the same and that must be changed in order to carry out a fair test. (1 mark)

Variables	To be kept the same	To be changed
Duration of experiment		
Amount of water		
Size of bread		
Type of bread		
Where the bags are placed		

b) Explain why Bread B developed more mould. (1 mark.)

---



---

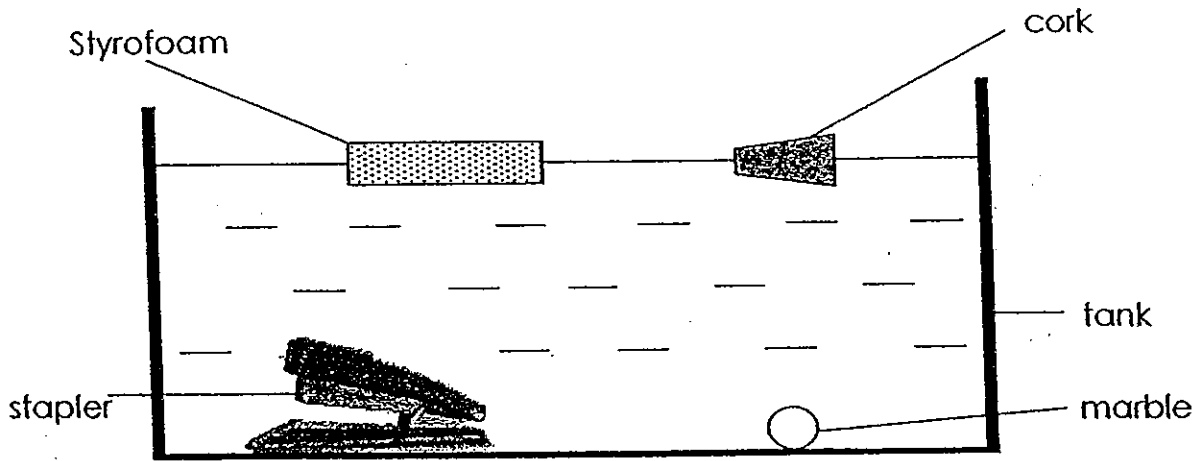
c) What are the conditions needed for the mould to grow other than that in (b)? (1 mark)

---

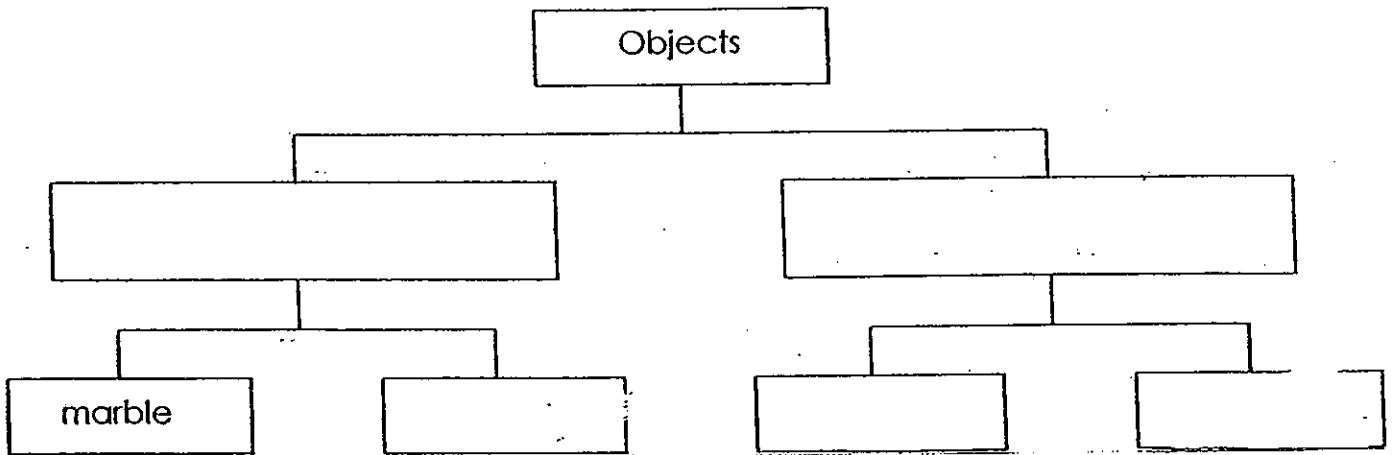


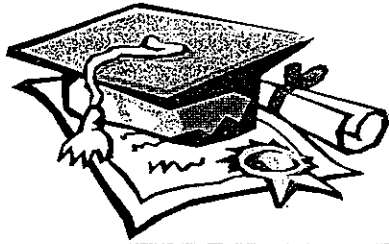
---

44. Eugene dropped four objects into a tank of water.  
 The diagram below shows the resting positions of the four objects.



Complete the classification chart below based on the diagram above.  
 (2 marks)



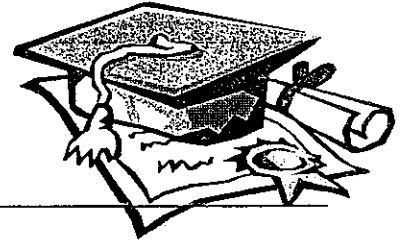


# ANSWER SHEET

**EXAM PAPER 2010**

**SCHOOL : TAO NAN PRIMARY  
SUBJECT : PRIMARY 3 SCIENCE**

**TERM : SA1**



Q1	Q2	Q3	Q4	Q5	Q6	Q7	Q8	Q9	Q10	Q11	Q12	Q13	Q14	Q15	Q16	Q17
4	2	1	2	3	1	2	4	3	3	3	1	1	3	3	3	1

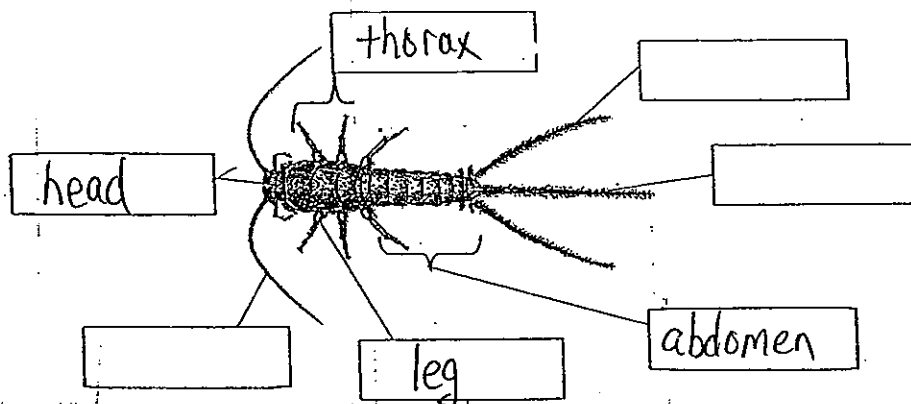
Q18	Q19	Q20	Q21	Q22	Q23	Q24	Q25	Q26	Q27	Q28	Q29	Q30
3	3	2	3	2	1	1	4	4	2	1	2	1

31) A, C, E, G, H, F, B, D  
A, C, E, G, H, F, B, D

32) F, E, C, B, A, D

33) D / C  
A / B

34)a)



b) It has three body parts and six legs.

35) Raincoats are made of plastic because plastic is waterproof and flexible.

36) i) T    ii) Not all plants have flowers.  
iii) T    iv) Before the fruits are developed, the flowers bloom.

37)ai)glass    aii)metal    aiii)rubber  
b)It is transparent.  
c)No. A car cannot move on its own. It can only move when people driven it.

38)a)It has feathers.  
b)It lays eggs.

39)a)Group Q.  
b)Eraser, stapler and Scissors are stationery.

40)a)X: plastic    Y: stainless steel  
b)X: Plastic is a poor conductor of heat.  
Y: Steel is a good conductor of heat.

41)a)hair    /    scales  
b)walks    /    swim  
c)give birth    /    lay eggs

42)a)They are both warm-blooded.  
b)It is not warm-blooded and does not live in water.  
c)Animal C has a shell but animal D does not have a shell.

43)a) ✓  
          ✓  
          ✓  
          ✓  
          ✓

b)B had more water than A.  
c)Air.

44)            sink                            float  
marble    stapler                            cork    styrofoam