

Pei Chun Public School
Semestral Assessment 1 – 2010
Science
Primary 3

Name : _____ () Date : 18 May 2010

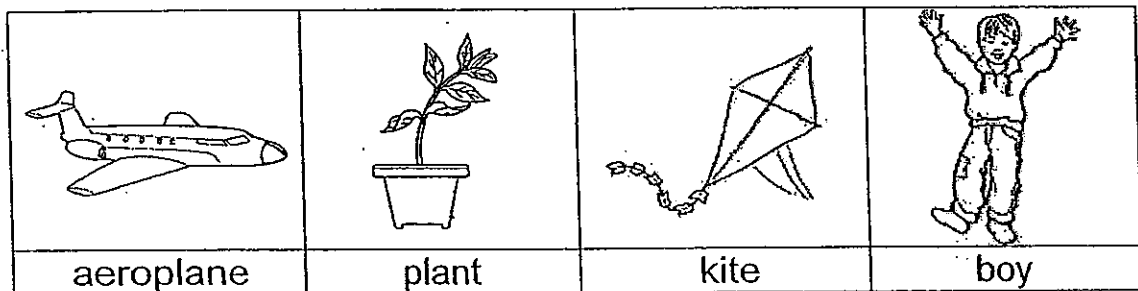
Class : Pri. 3 ()

Science Teacher : _____ Time : 50 min

Section A (15 × 2 marks)

For questions 1 to 15, choose the most suitable answer and shade its number (1, 2, 3 or 4) on the Optical Answer Sheet (OAS) provided.

1. Look at the following diagrams.

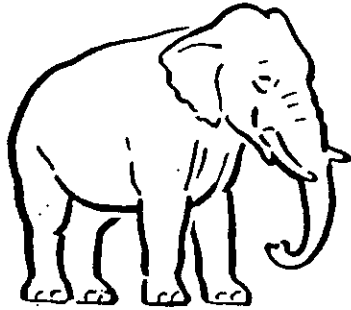


Which of the above can move from place to place on its own?

- (1) aeroplane
- (2) plant
- (3) kite
- (4) boy

()

2. Study the organisms below carefully.



elephant



coconut tree



jellyfish



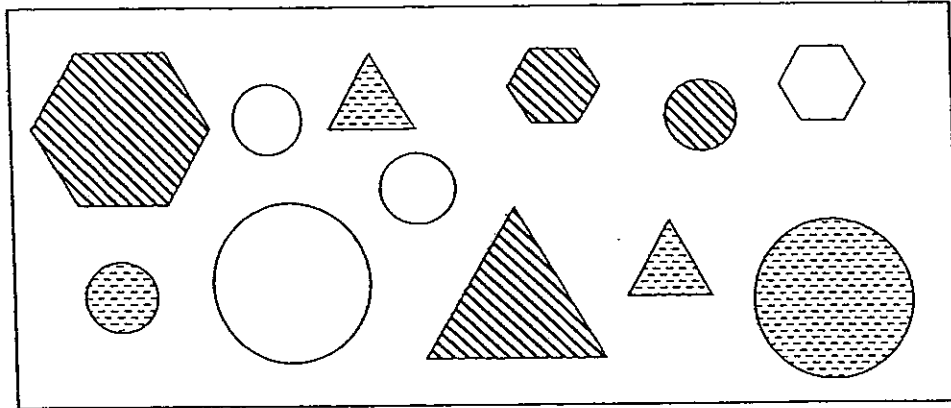
anteater

The organisms can be grouped together because they _____.

- A: live on land
- B: can have young
- C: need air, food and water to live
- D: can respond to changes around them

- (1) A and C only
- (2) B and D only
- (3) B, C and D only
- (4) A, B, C and D

3. Study the objects in the box below.



The objects can be classified into three equal groups according to their _____.

- (1) size
- (2) shape
- (3) pattern
- (4) number of sides

()

4. Study the characteristics of the four organisms represented by W, X, Y and Z in the table below. The characteristic that is present is represented by a tick (✓).

Characteristic	W	X	Y	Z
Able to move about by itself	✓		✓	
Able to make its own food			✓	
Needs air, food and water	✓	✓	✓	

What do W, X, Y and Z represent?

	W	X	Y	Z
(1)	monkey	mould	balsam	kettle
(2)	snake	balsam	money plant	monkey
(3)	monkey	toadstool	fern	snake
(4)	money plant	fern	snake	cup

()

5. The similarities between plants and animals are that they can _____.

P: make their own food

Q: reproduce by giving birth

R: respond to changes around them

S: change in size and appearance over time

(1) R only

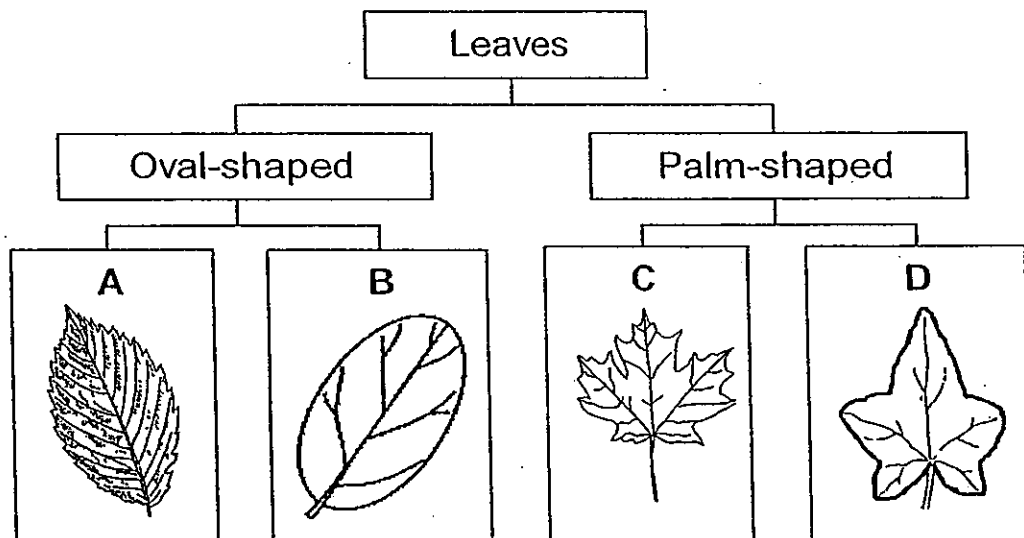
(2) R and S only

(3) P, Q and S only

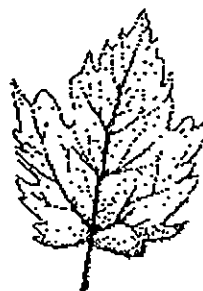
(4) Q, R and S only

()

6. Meili collected some leaves and arranged them in the classification chart as shown below.



In which group, A, B, C or D, should Meili place the leaf shown below?



(1) A

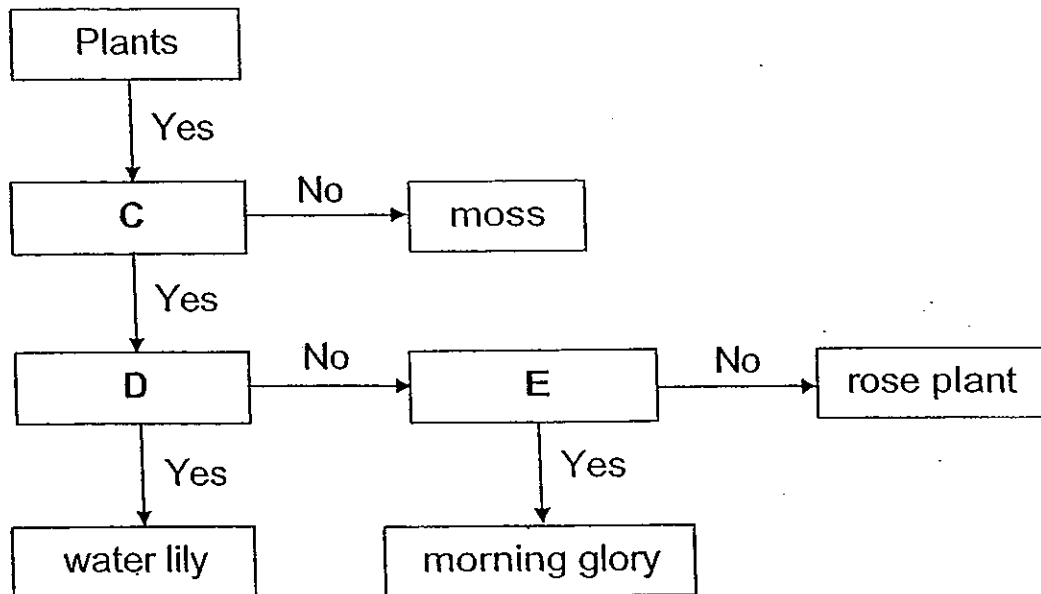
(2) B

(3) C

(4) D

()

7. Study the flow chart below.



Which of the following best represents C, D and E?

	C	D	E
(1)	Is it a flowering plant?	Is it a water plant?	Does it have a weak stem?
(2)	Is it a water plant?	Is it a flowering plant?	Does it have a weak stem?
(3)	Is it a flowering plant?	Does it have round leaves?	Does it have a strong stem?
(4)	Does it reproduce by spores?	Is it a water plant?	Does it have a strong stem?




8. Some animals are grouped in a classification table below.

Animals		
Group A	Group B	Group C
eagle	horse	snail
ostrich	lizard	worm
peacock	crocodile	cobra

The animals are classified according to _____.

- (1) where they live
- (2) the food they eat
- (3) their body covering
- (4) their number of legs

9. The table below shows three organisms and whether they have the characteristics J, K and L.

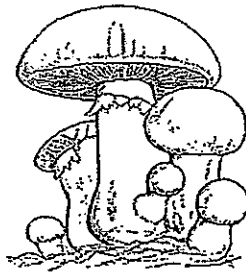
Animals	Characteristic		
	J	K	L
 platypus	✓	✓	✓
 porcupine		✓	
 penguin	✓		✓

Which of the following represents the characteristics J, K and L correctly?

	J	K	L
(1)	Can swim	Is a mammal	Lays eggs
(2)	Is a mammal	Gives birth	Lives in water
(3)	Lives in water	Is a mammal	Gives birth
(4)	Have hair	Lives on land	Lays eggs

()

10. Mr Lim wants to grow the following organism in a pot. He has a choice of places P, Q, R and S.

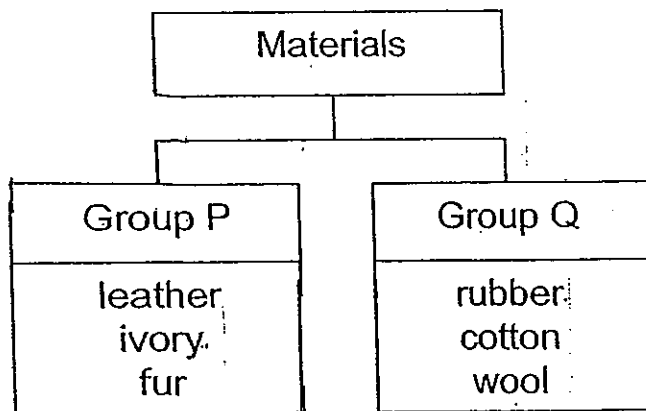


Place	P	Q	R	S
Brightness	dark	bright	dark	bright
Amount of moisture	high	high	low	low

Which of the following is the best place to put the pot so that the organism will grow well?

- (1) P
- (2) Q
- (3) R
- (4) S

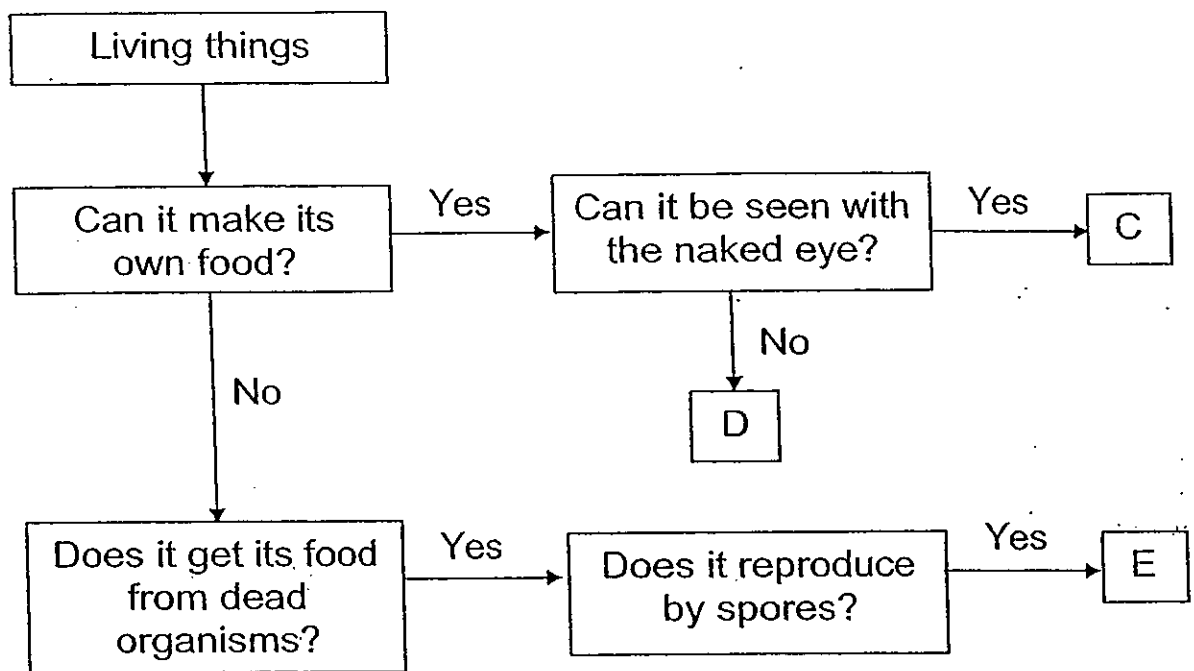
11. Study the classification chart below.



Which of the materials above has been wrongly classified?

- (1) fur
- (2) wool
- (3) ivory
- (4) rubber

12. The chart below shows three living things, C, D and E.



Three pupils made the following statements.

Ah Xing : C is a plant.

Bala : D is a fungi.

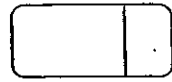
Zoe : E reproduces by seeds.

Based on the chart above, who made the correct statement(s)?

- (1) Zoe only
- (2) Ah Xing only
- (3) Bala and Zoe only
- (4) Ah Xing and Bala only

()

13. An eraser and a capped empty plastic bottle were dropped into a tank of water.

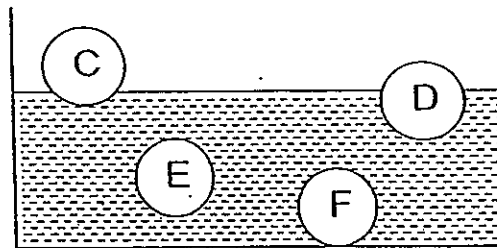


eraser



capped empty plastic bottle

C, D, E and F are possible positions that the eraser and the capped empty plastic bottle will be when they are dropped into the water.



Which are the best positions for the eraser and the capped empty plastic bottle?

	eraser	capped empty plastic bottle
(1)	C	D
(2)	D	F
(3)	F	C
(4)	F	E

()

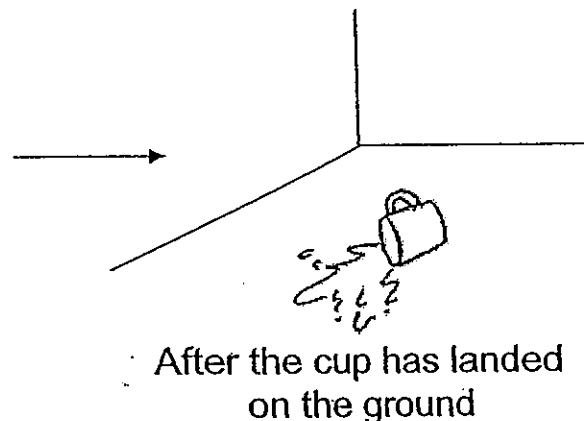
14. Aini divided six objects into two different groups according to the materials they are made of. She drew the following classification table.

Group K	Group L
ruler	bowl
stool	plate
table	spoon

What are the materials used to make the objects in Groups K and L?

	Group K	Group L	
(1)	plastic	plastic	
(2)	ceramic	wood	
(3)	rubber	glass	
(4)	wood	ceramic	()

15. Deming was running and knocked into Aileen who was carrying a cup of drink.



Based on the diagram, the cup is most likely made of _____.

J: glass
L: plastic

K: metal
M: ceramics

- (1) J and M only
(2) K and L only
(3) J, K and L only
(4) K, L and M only

()

End of Section A

Pei Chun Public School
Semestral Assessment 1 – 2010
Science
Primary 3

Name: _____ ()

Class: Pri. 3 ()

Date: 18 May 2010

Time: 50 min

Science Teacher: _____

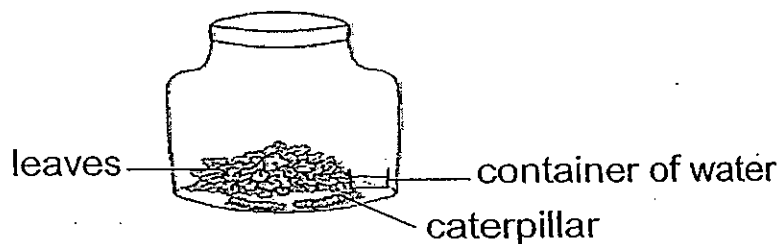
Parent's Signature: _____

Section A	30
Section B	20
Total	50

Section B (20 marks)

For questions 16 to 22, write your answers in the spaces provided.

16. Siti caught two caterpillars and kept them in a covered jar with some leaves as shown below.



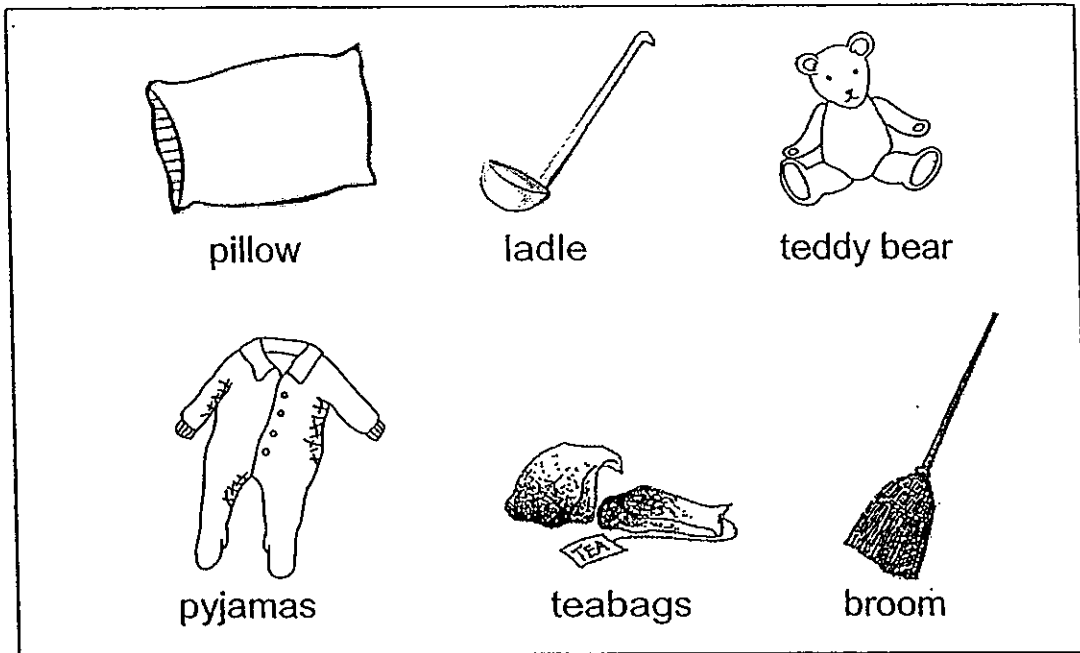
- (a) What will most likely happen to the caterpillars after two weeks?

(1 m)

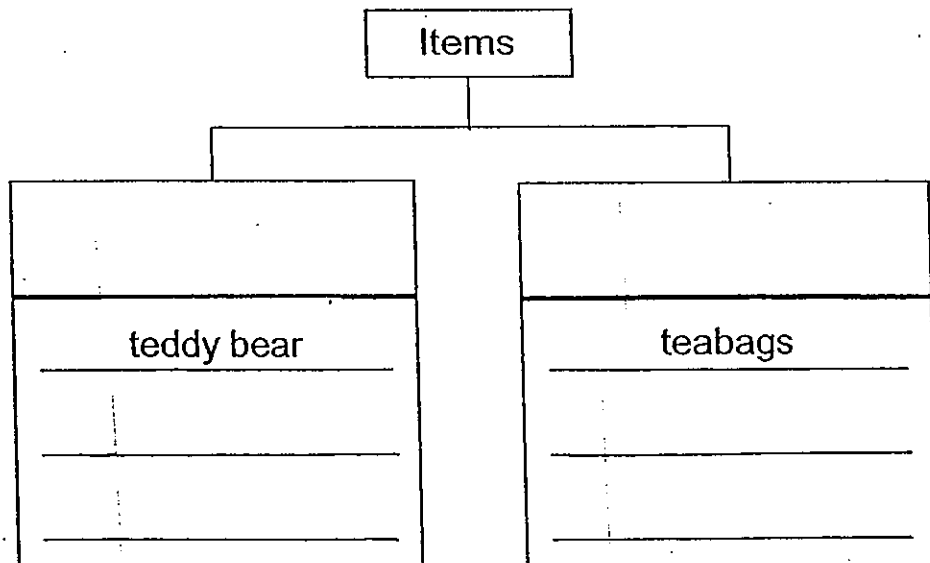
- (b) Explain your answer in (a).

(1 m)

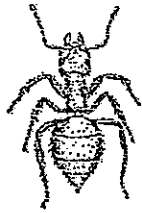
17. Daniel wanted to classify the items in the box below. He wanted to group them according to the rooms in his house where they can be found.



Complete the following classification chart to help Daniel decide where to put the items. Give a suitable heading for each group. (3 m)



18. Study the two organisms carefully.



ant

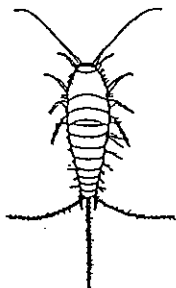


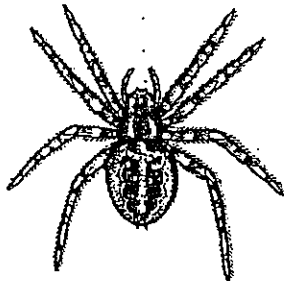
wasp

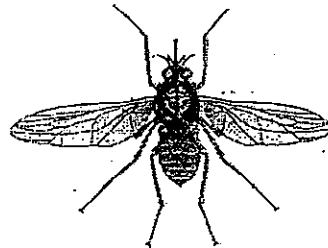
(a) Based on the diagrams, put a tick (✓) in the correct box to show if the following statements are true, false or not possible to tell. (2 m)

Statements	True	False	Not possible to tell
(i) The wasp is not an insect because it has wings.			
(ii) Both organisms reproduce by laying eggs.			

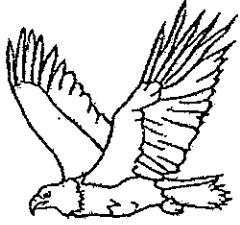



(b) Put a tick (✓) against the organism(s) that is/ are insects. (1 m)







19. The table below shows two groups of animals.

Group J	Group K
 <p data-bbox="544 562 635 600">eagle</p>  <p data-bbox="528 927 676 965">crocodile</p>	 <p data-bbox="1066 555 1241 593">koala bear</p>  <p data-bbox="1114 927 1214 965">giraffe</p>

(a) Give a suitable heading for Groups J and K. (1 m)

Group J: _____

Group K: _____

(b) Fajar wants to place the animal 'chicken' in Group K. Is he correct? Give a reason for your answer. (1 m)

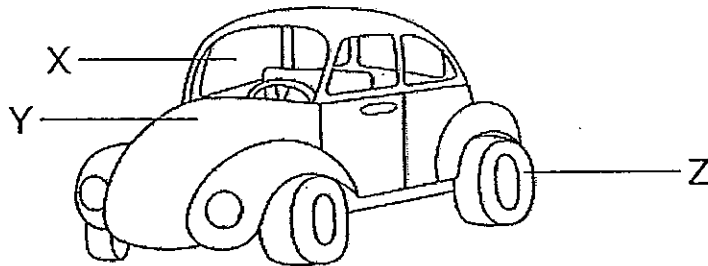
(c) The animals could also be grouped according to _____ (1 m)

20. Read the following statements about Fungi and Bacteria.

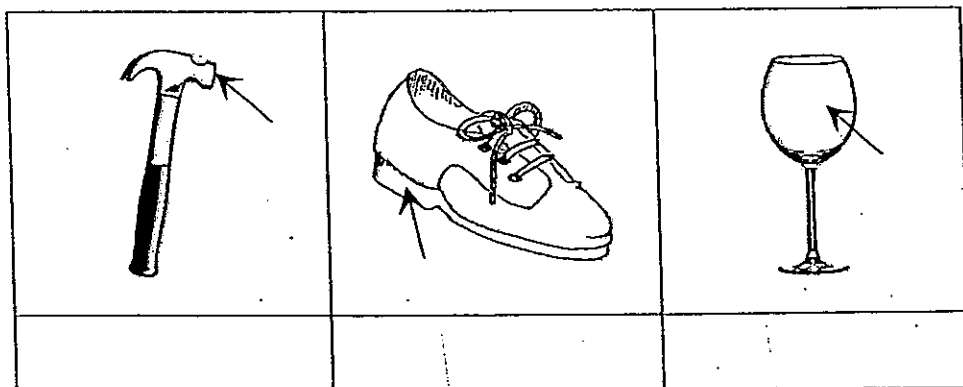
Write 'T' for a statement that is True and 'F' for a statement that is False. (3 m)

Statement	T / F
(a) Mould and yeast are not alive.	
(b) Fungi can only grow in dark and moist places.	
(c) Bacteria can only be seen under a microscope.	

21. Materials X, Y and Z were used to make the parts of the car as labelled.



(a) Materials X, Y and Z can also be used to make the parts of the following objects. Match the labelled parts below with the materials X, Y or Z. (1½ m)



(b) Name Materials X, Y and Z. (1½ m)

Material X: _____

Material Y: _____

Material Z: _____

22. The diagram below shows a fire alarm.


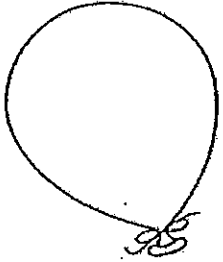
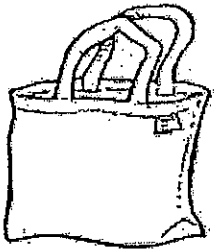
Material A is used as the front cover of the fire alarm because it is easily breakable.



(a) What could Material A most likely be? (1 m)

(b) Name another property why Material A is being chosen. (1 m)

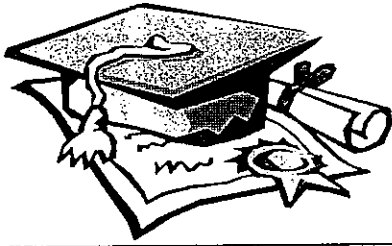
(c) Put a tick (✓) against the object(s) that can be made with Material A. (1 m)

End of Section B

Set by: Mrs Ng Hui Zhi

Vetted by: P3 Science Teaching Team

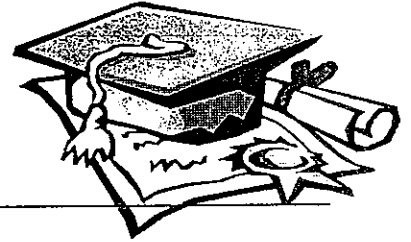


ANSWER SHEET

EXAM PAPER 2010

**SCHOOL : PEI CHUN PRIMARY
SUBJECT : PRIMARY 3 SCIENCE**

TERM : SA1



Q1	Q2	Q3	Q4	Q5	Q6	Q7	Q8	Q9	Q10	Q11	Q12	Q13	Q14	Q15
4	3	3	1	2	3	1	4	1	1	2	2	3	4	2

- 16)a)They will die.
b)They will die because they do not have enough air.

- 17)Bedroom Kitchen
teddy bear teabags
pyjamas broom
pillow ladle

- 18)a)i)F b)Not b)

- 19)a)Group J: Animal-eaters (carnivores) Group K: Plant-eaters (Herbivores)
b)No. Chicken is a plant and animal-eaters .
c)how they reproduce./their diet/the food they eat.

- 20)a)F b)F c)T

- 21)a)Y Z X
b)X: Glass Y: Metal Z: Rubber

- 22)a)Glass
b)It is transparent

- 23)bottle

