



**NAN HUA PRIMARY SCHOOL  
SEMESTRAL ASSESSMENT 1 – 2010  
PRIMARY 3**

**SCIENCE**

**BOOKLET A**

**30 Multiple Choice Questions (60 marks)**

**Total Time for Booklets A and B : 1 hour 45 minutes**

**INSTRUCTIONS TO CANDIDATES**

1. Write your name and index number in the space provided.
2. Do not turn over the page until you are told to do so.
3. Follow all instructions carefully.
4. Answer all questions.
5. Shade your answers in the Optical Answer Sheet (OAS) provided.

**Marks Obtained**

Booklet A		/ 60
Booklet B		/ 40
Total		/100

Name: \_\_\_\_\_

) Class: P 3 \_\_\_\_\_

Date : 12 May 2010

Parent's Signature: \_\_\_\_\_

**Section A: (30 x 2marks = 60marks)**

For each question from 1 to 30, four options are given. One of them is the correct answer. Make your choice (1, 2, 3 or 4). Shade the correct oval (1, 2, 3 or 4) on the Optical Answer Sheet.

1. Which one of the following is a non-living thing?

- (1) Snake
- (2) Starfish
- (3) Sawdust
- (4) Sunflower

2. Sharon found a millipede in her garden. She touched it with a stick and it curled its body. Based on her observation, she can conclude that living things can

---

- (1) die
- (2) grow
- (3) reproduce
- (4) respond to stimuli

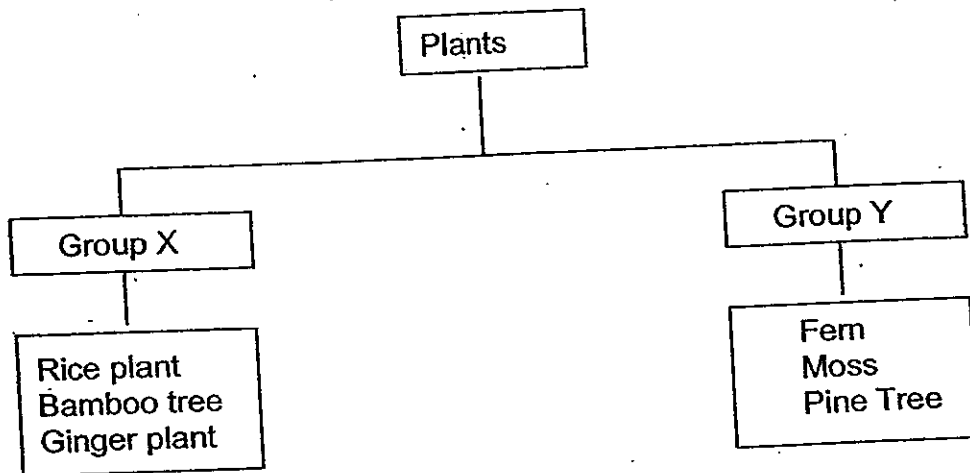
3. How are animals and plants alike?

- (1) They grow and die.
- (2) They make their own food.
- (3) They give birth to their young.
- (4) They move from place to place by themselves.

4. Ming saw a living thing growing on a rotting log. It looks like a plant but has no green parts. What could it be?

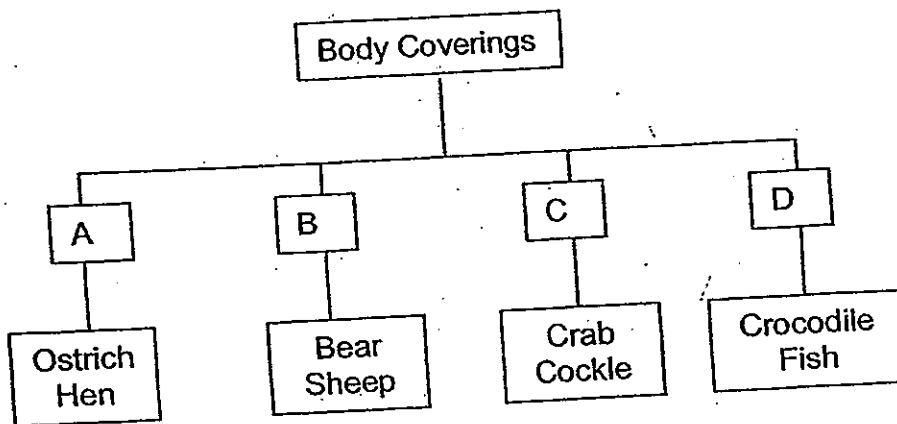
- (1) Fern
- (2) Moss
- (3) Fungus
- (4) Bacterium

5. Study the classification diagram below. How are the plants grouped?



	Group X	Group Y
(1)	Aquatic plants	Land plants
(2)	Seedless plants	Seeded plants
(3)	Poisonous plants	Non- poisonous plants
(4)	Flowering plants	Non-flowering plants

6. The diagram below shows how some animals can be grouped according to their body coverings.



Which one of the following animals can be grouped under A?

- (1) Penguin
- (2) Platypus
- (3) Prawn
- (4) Snake

7. Which one of the following materials comes from non-living things?

- (1) cotton
- (2) rubber
- (3) wood
- (4) glass

8. Joe has collected three balls of the same size, A, B and C. Each ball is made of different material. He dropped each ball from a height of 1 metre onto hard floor to see whether it bounces.

Ball	Material
A	Plastic
B	Rubber
C	Ceramic

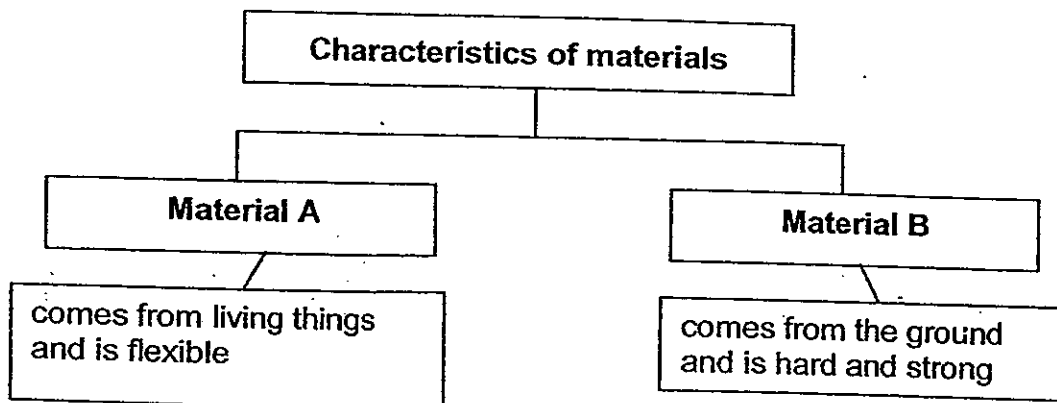
Which balls are likely to bounce on the hard floor?

- (1) A and B only
- (2) A and C only
- (3) B and C only
- (4) A, B and C

9. Materials are selected for specific uses based on their properties. Which of the following is wrong?

	Material	Use	Property
(1)	Clay	Making vases	Can be shaped when moist
(2)	Glass	Making window panes	Can be seen through easily
(3)	Plastic	Storing food	Can float on water
(4)	Metal	Making nails	Can last a long time

10. Study the classification table below.



Which of the following best represents Material A and B respectively?

	A	B
(1)	glass	cotton fabric
(2)	plastic	rubber
(3)	cotton fabric	metal
(4)	metal	glass

11. The table below shows the main material used to make each object. Which one of the following shows the material that is used to make the object correctly?

	Object	Material
(1)	Bedsheet	Rubber
(2)	Frying pan	Metal
(3)	Spoon	Paper
(4)	Raincoat	Wool

12. Study the statements about an object in the box below.

It is waterproof.  
 It breaks easily.  
 It feels smooth when I touch it.

Which of the following is the object most likely to be?

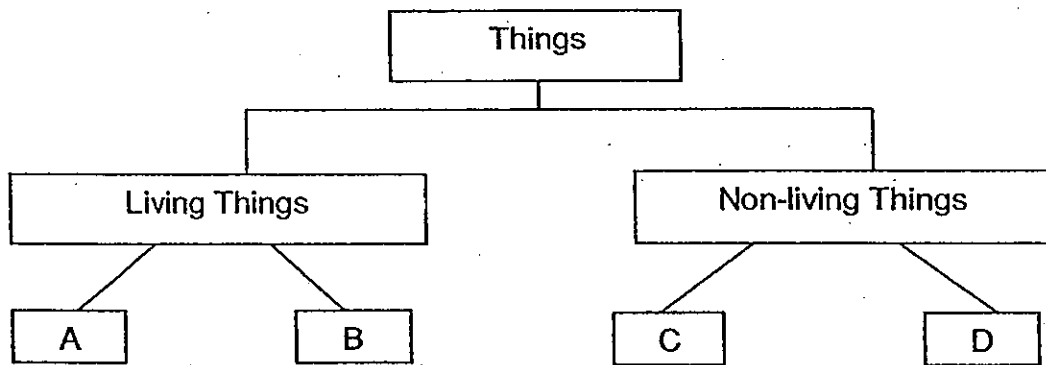
- (1) Cotton socks                      (2) Ceramic plate  
 (3) Metal ruler                        (4) Paper file

13 Maria took 4 objects made of different materials and used a coin to scratch the surface of each object.

She wanted to find out which object is the \_\_\_\_\_.

- (1) hardest  
 (2) lightest  
 (3) thinnest  
 (4) most flexible

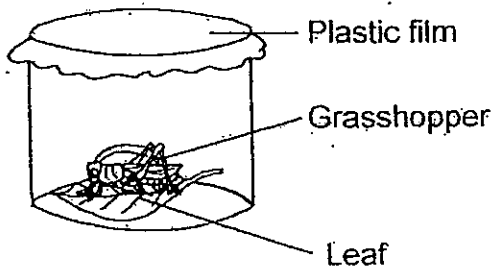
14. Study the classification table below carefully.



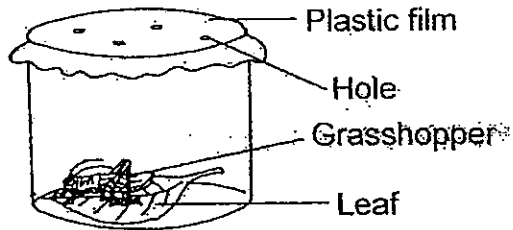
Which of the following best represent A, B, C and D?

	A	B	C	D
(1)	anteater	dustbin	puppy	bookcase
(2)	printer	eagle	kettle	fern
(3)	butterfly	flower	ruler	elephant
(4)	begonia	rooster	balloon	stopwatch

15. Tom prepared 2 experiment set-ups A and B, as shown in the diagram below. What was the aim of his experiment?



Set-up A

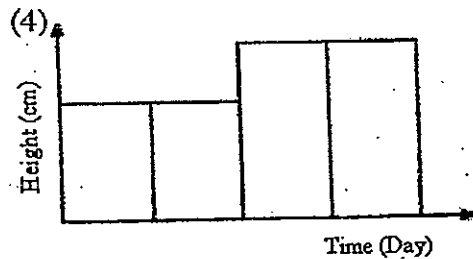
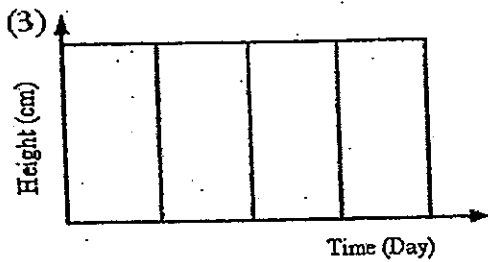
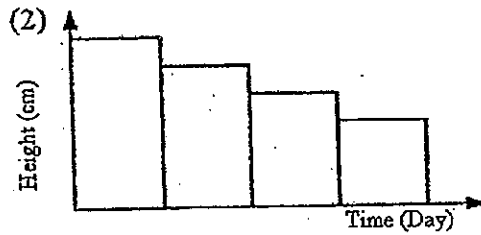
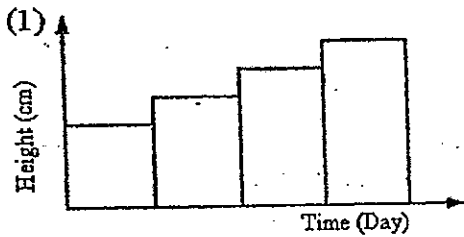


Set-up B

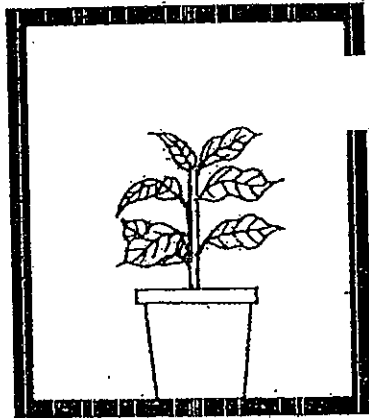
He was trying to find out if the grasshopper \_\_\_\_\_

- (1) needs air to survive
- (2) needs leaf for shelter
- (3) needs food to survive
- (4) can reproduce in the container

16. Which one of the following graphs best shows the change in height of a healthy bean seedling with time?



17. A plant is put into a cardboard box as shown below. The set-up is then placed in the garden and watered daily. What will happen to the plant after three days?



It will grow \_\_\_\_\_.

- (1) away from the light
- (2) towards the hole to obtain light
- (3) upwards and hit the top of the box
- (4) downwards to the pot to get water

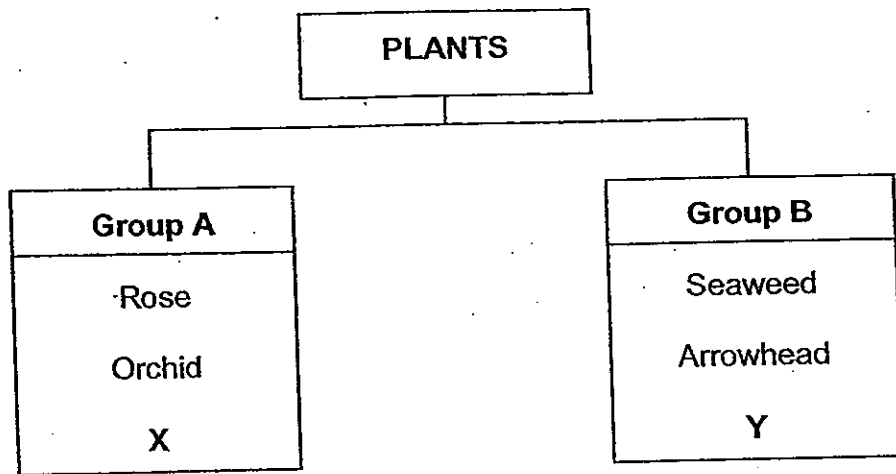
18. Which of the following statements about micro-organisms are true?

- A: All micro-organisms can reproduce.
- B: All micro-organisms are harmful to people.
- C: All micro-organisms can only be seen with the help of a microscope.

- (1) A and B only
- (2) A and C only
- (3) B and C only
- (4) A, B and C only



19. Study the diagram below and answer the following question.



Which plants can X and Y be?

	X	Y
(1)	Water lily	Dumbcane
(2)	Allamanda	Ixora
(3)	Hibiscus	Water hyacinth
(4)	Daisy	Ladder fern

20. The diagram below shows a Bird's Nest Fern.



Which of the following statements correctly describe the Birds' Nest Fern?

- A: It has green leaves.
- B: It can bear flowers.
- C: It reproduces from spores.
- D: It is able to make its own food.

- (1) A and B only
- (2) C and D only
- (3) A, C and D only
- (4) A, B, C and D

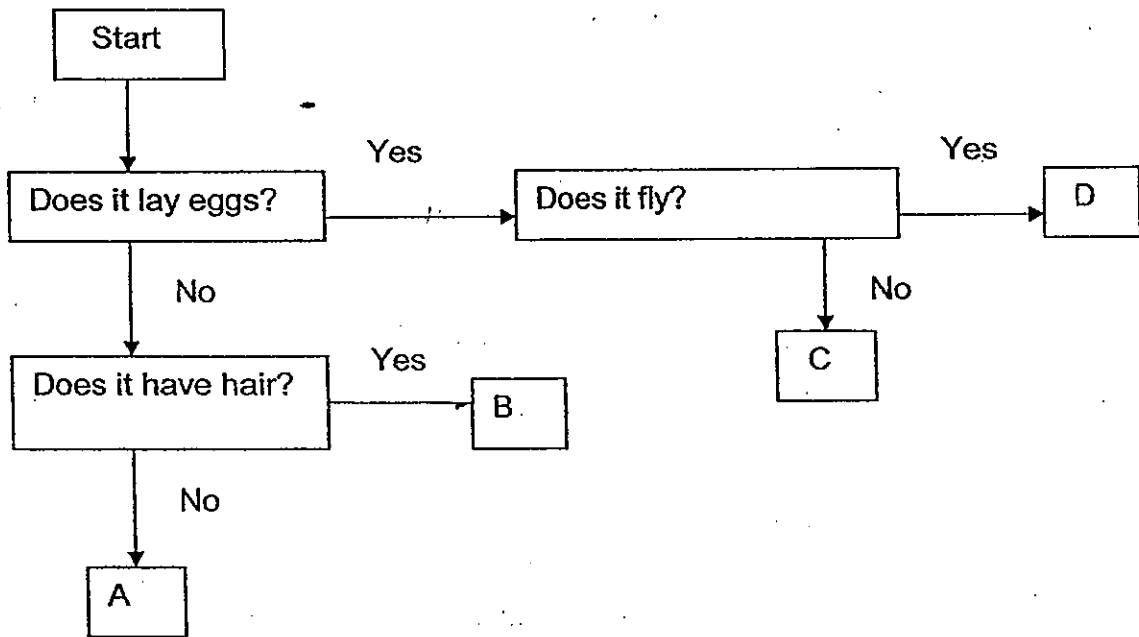
21. Sally has written four statements about the angelfish.

- A: It has fins which helps it to breathe.
- B: It has scales which protect its body.
- C: It has gills which helps it to swim faster.
- D: It reproduces by laying many eggs at a time.

Which of the statements above are correct?

- (1) A and B only
- (2) B and D only
- (3) C and D only
- (4) A, B, C and D

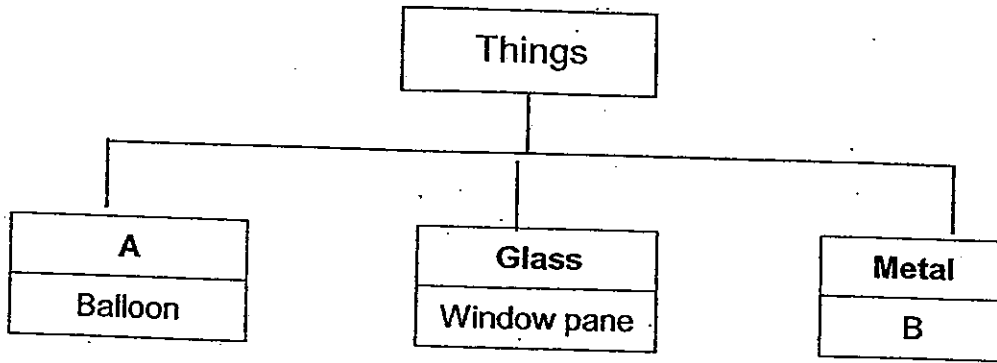
22. Study the flow chart below.



Which of the following best represents A, B, C and D respectively?

	A	B	C	D
(1)	Snake	Platypus	Bat	Eagle
(2)	Swordtail	Mosquito	Penguin	Ant
(3)	Bat	Camel	Guppy	Monkey
(4)	Guppy	Monkey	Crocodile	Mosquito

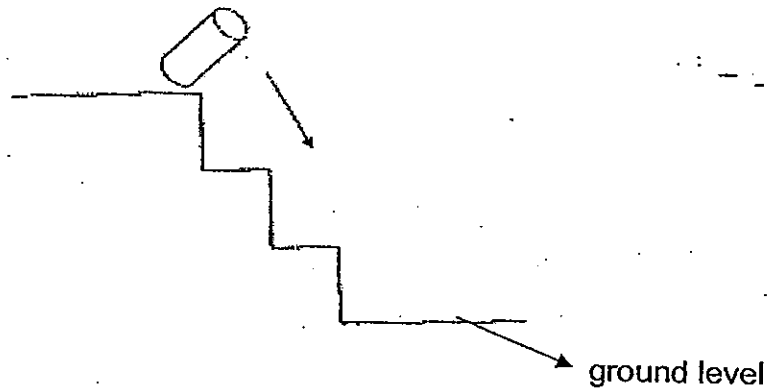
23. Study the classification chart below carefully.



Which of the following best represent A and B respectively?

	A	B
(1)	Wood	Mirror
(2)	Fabric	Book
(3)	Rubber	Staples
(4)	Plastic	Towel

24. Look at the diagram below carefully.

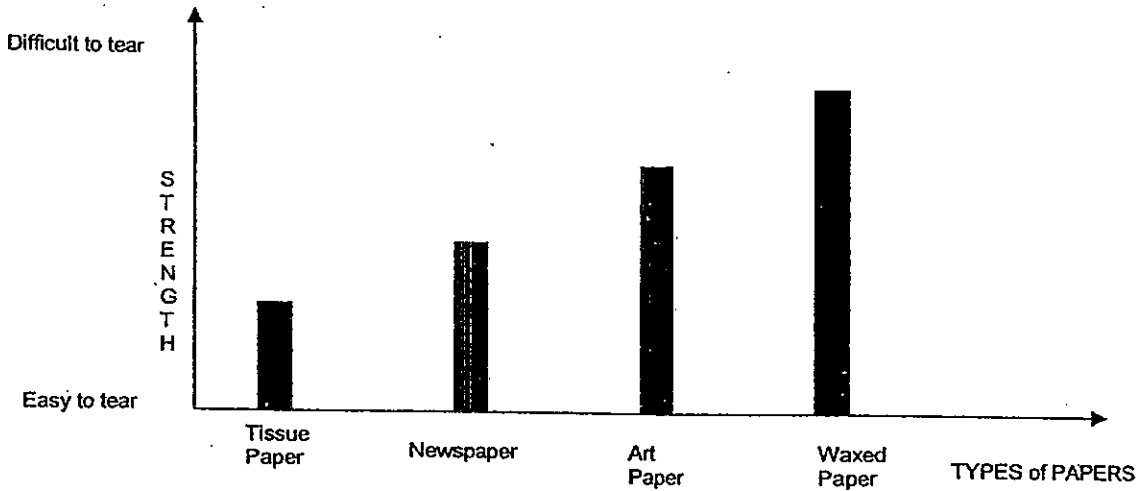


A container rolled down the stairs onto the ground and did not break. Which one of the following materials is the container likely to be made of?

- A: clay
- B: metal
- C: glass
- D: plastic

- (1) A and B only
- (2) A and C only
- (3) B and D only
- (4) C and D only

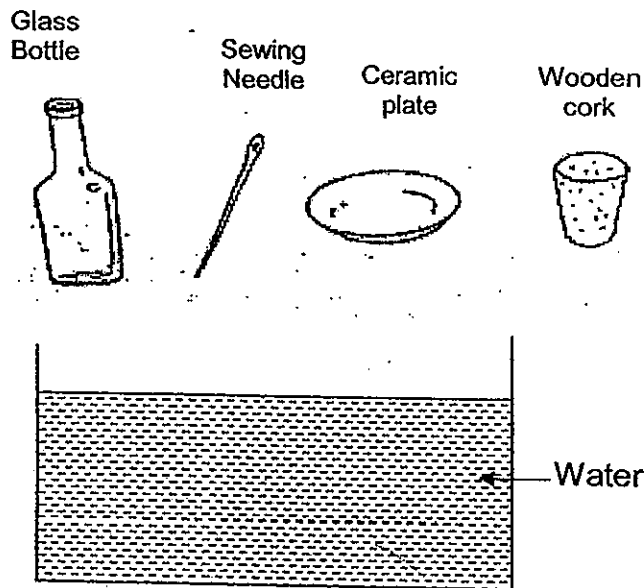
25. The graph below shows the strength of 4 different types of paper.



Based on the graph, which type of paper is the strongest?

- (1) Tissue paper
- (2) Art paper
- (3) Newspaper
- (4) Waxed paper

26. Four objects of different materials are dropped into a container of water. Which of the objects will float?



- A: Glass bottle
- B: Ceramic plate
- C: Wooden cork
- D: Sewing needle

- (1) A only
- (2) C only
- (3) A and D only
- (4) B and D only

27. Study the table below.

Objects	
Absorbent	Non-absorbent
X	Gold chain
Sponge	Y

What can objects X and Y be?

	X	Y
(1)	canvas shoes	rubber ball
(2)	safety pin	nylon bag
(3)	rubber ball	safety pin
(4)	ice-cream stick	cotton ball

28. Shopping bags are usually made of plastic because plastic \_\_\_\_\_.

- A: is light
- B: is waterproof
- C: floats on water
- D: does not tear easily

- (1) A and D only
- (3) A, B and D only.

- (2) B and C only
- (4) A, B, C and D

29. Mother bought an object. The description of the object is as follows:

It is not waterproof.  
 It is made from a soft material.  
 It does not allow us to see through it.

Which of the following best represents the object?

- (1) Beach towel
- (2) Baking paper
- (3) Coffee mug
- (4) Fish bowl

30. The properties of 3 different objects were observed and recorded in the table below.

Objects Properties	Wooden ruler	Iron nail	Eraser
Made of natural materials	✓	✓	✓
Flexible			✓
A	✓		

Which of the following best represents property A?

- (1) It is hard.
- (2) It is elastic.
- (3) It is strong.
- (4) It floats on water.



NAN HUA PRIMARY SCHOOL  
SEMESTRAL ASSESSMENT 1 – 2010  
PRIMARY 3

SCIENCE

BOOKLET B

14 Open-ended questions (40 marks)

Total Time for Booklets A and B : 1 hour 45 minutes

INSTRUCTIONS TO CANDIDATES

1. Write your name and index number in the space provided.
2. Do not turn over the page until you are told to do so.
3. Follow all instructions carefully.
4. Answer all questions.
5. Write your answers in this booklet.

Marks Obtained

Section B

	/40
--	-----

Name: \_\_\_\_\_ ( ) Class: P 3 \_\_\_\_\_

Date : 12 May 2010

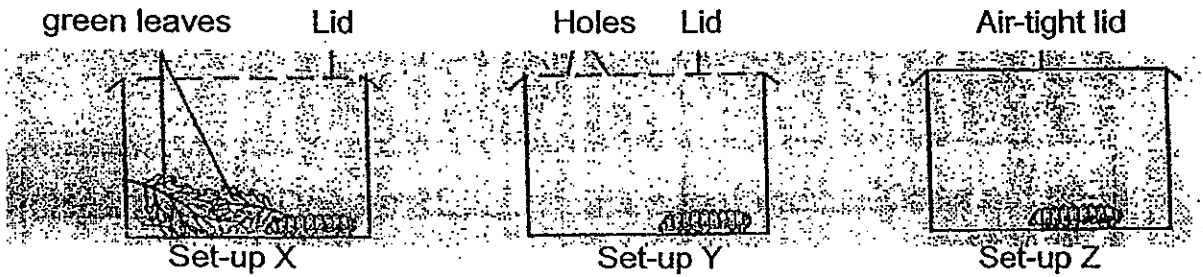
Parent's Signature: \_\_\_\_\_

---

**Section B (40 marks)**

Write your answers to questions 31 to 44. The marks available is shown in brackets [ ] at the end of each question or part question.

31. In the following experiment, caterpillars were kept in containers under different conditions.



(a) Which set-up would contain a living caterpillar after 2 days? [1]

\_\_\_\_\_

(b) Name the conditions present in the container stated in (a) that allowed the caterpillar to live. [1]

\_\_\_\_\_

32. Classify the things in the box under the correct headings. [3]

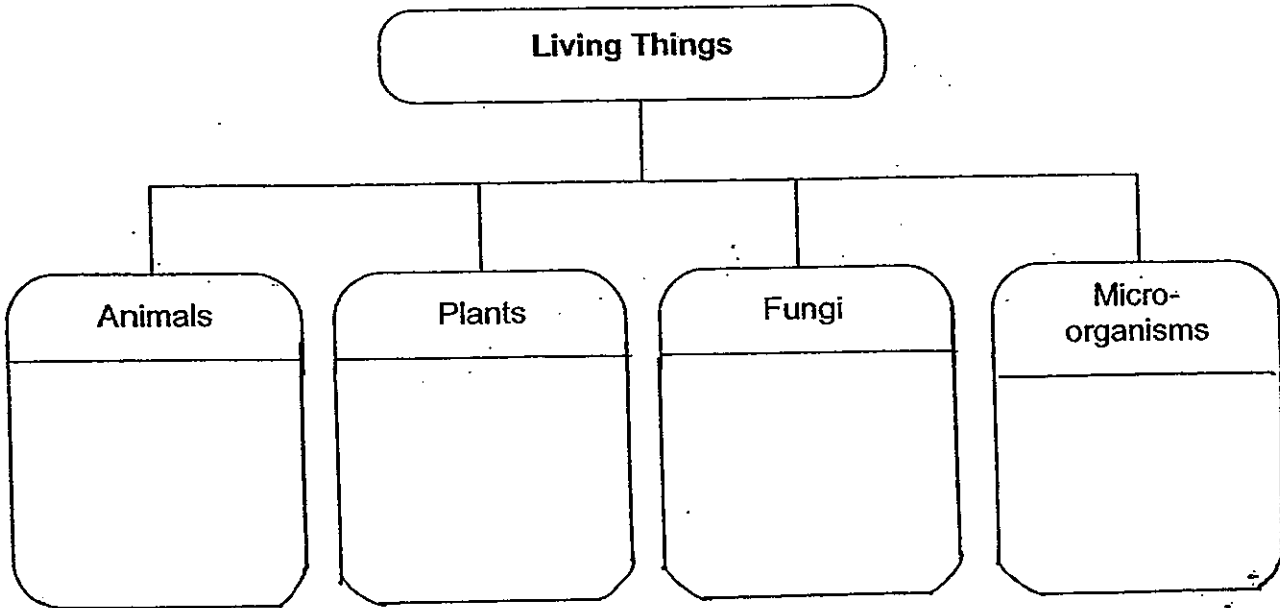
teapot	mealworm	basket	donkey	parrot	picture
--------	----------	--------	--------	--------	---------

Living Things	Non-living Things

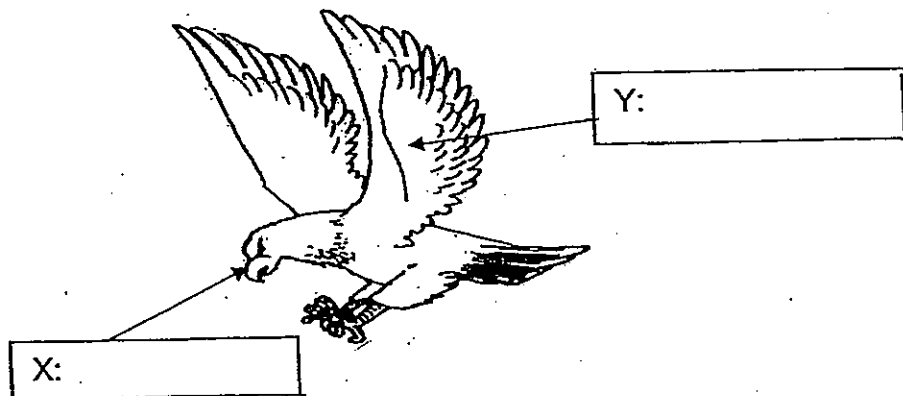


33. Group the living things given in the box correctly in the classification chart below. [3]

ladder fern	lantana	toadstool	earthworm
bread mould	orang utan	bacteria	conifers



34. (a) Write the name of the parts of the bird labelled X and Y in the diagram below [1]



(b) Name the body covering of the bird. [1]

\_\_\_\_\_

(c) State one function of the body covering stated in (b). [1]

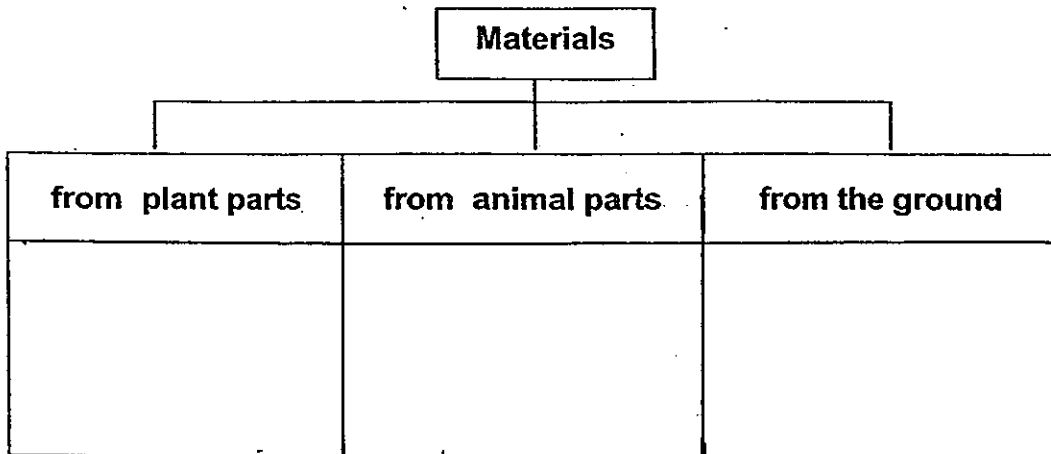
\_\_\_\_\_

Score	7/8
-------	-----

35. Classify the materials listed below under the correct headings.

[4]

diamond	lambskin	leather	silk
latex	rattan	pebbles	cotton



36. Four identical plants, A, B, C, D are grown under different conditions as shown in the table below.

Plants	Conditions		
	Air	Water	Sunlight
A	✓		
B			✓
C		✓	✓
D	✓	✓	✓

(a) Which plant (A, B, C or D) will most likely survive after 1 week?

[1]

(b) Give a reason for your answer in (a)

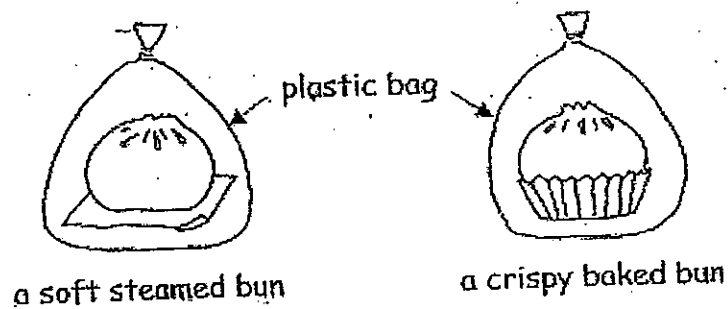
[1]

Score	6
-------	---

37. Match the following observations to the correct characteristics of the living things by joining the dots correctly. [4]

- | Observations   | Living things can... |
|--|----------------------|
| a) A fish lays eggs in the water. ●  | ● respond to changes |
| b) A dog will walk towards its food. ●   | ● grow               |
| c) When an insect lands on the Venus Flytrap plant, it closes up and traps the insect. ● | ● reproduce          |
| d) A tadpole turns into a frog. ●  | ● move by themselves |

38. Gabriel bought a steamed bun and a baked bun. After both buns have completely cooled, he wrapped each of them in a plastic bag as shown in the diagram below. He left them side by side in a warm and dark cupboard. After a few days, some black patches were seen on the surface of the steamed bun.



(a) What organism had grown on the surface of the steamed bun? [1]

---



---

(b) Name one condition that promoted the growth of the organism that you mentioned in (a). [1]

---



---

39. Peter placed Animal X and Y into two separate cages to find out about the food they eat. Both animals have hair and four legs. They both give birth to young alive. He placed 3000ml of water, 600 g of meat and 600g of fruits into each cage.

He weighed the amount of food and water left the following day and recorded the results as shown in the table below.

	Animal X			Animal Y		
	Amount of water (ml)	Amount of meat (g)	Amount of fruits (g)	Amount of water (ml)	Amount of meat (g)	Amount of fruits (g)
Day 1	3000	600	600	3000	600	600
Day 2	350	220	250	370	600	80

(a) Which group of animals do Animals X and Y belong to? [1]

---



---

(b) Based on the table, state one similarity between Animal X and Animal Y. [1]

---



---

(c) Based on the table, state one difference between Animal X and Animal Y. [1]

---



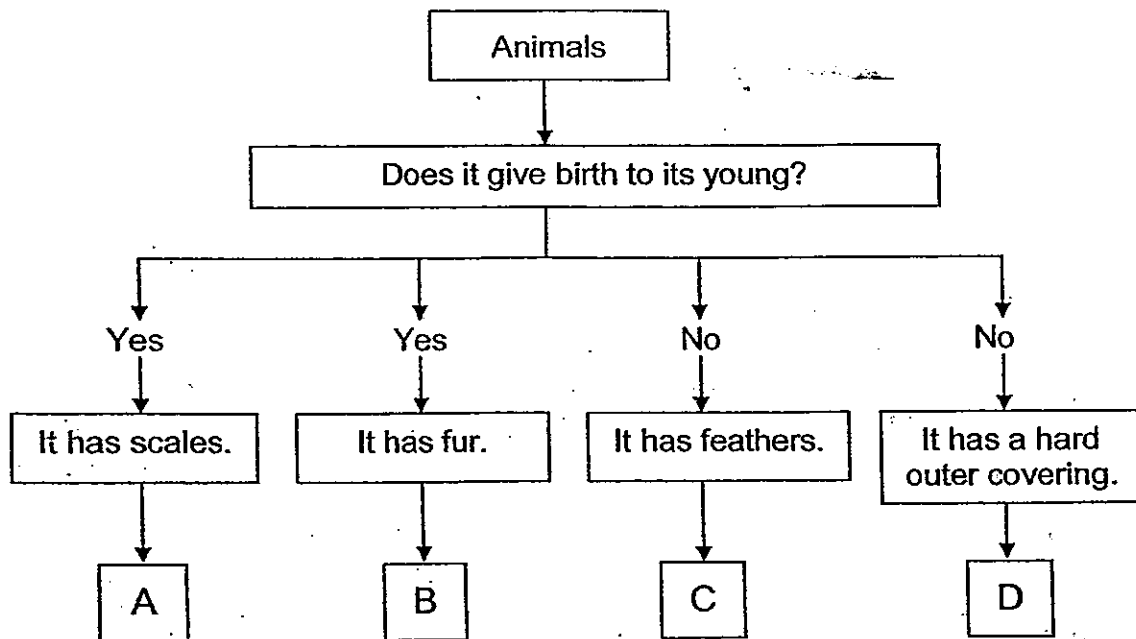
---

(d) State one characteristic of living things shown in the experiment. [1]

---

Score	4
-------	---

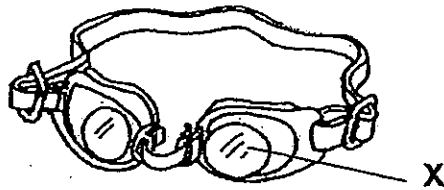
40. Study the flow chart below.



Put the letters, A, B, C and D, in the box below to represent the animals correctly. [2]

- (i) Sparrow:                       (ii) Tortoise:
- (iii) Swordtail:                       (iv) Sheep:

41. The diagram below shows a pair of swimming goggles.



(a). Name the material that is suitable to make the part labelled X above. [1]

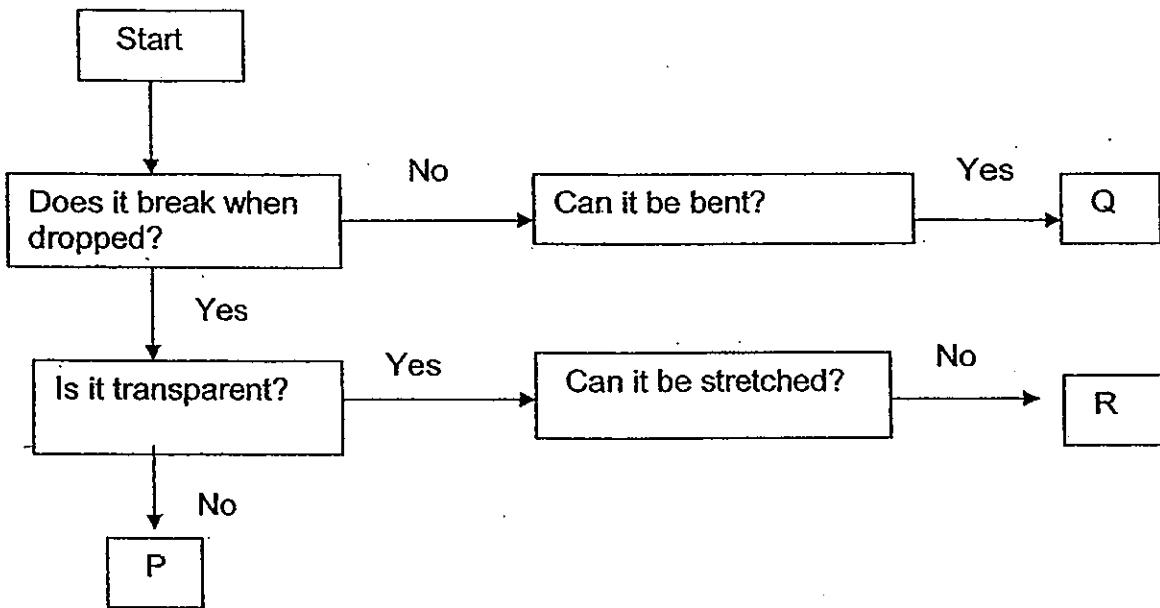
\_\_\_\_\_

(b). Give a reason for your answer in (a) [1]

\_\_\_\_\_

Score	4
-------	---

42. Study the flow chart below.



(a) Based on the information above, state the properties of Material R. [2] 1 1/2

---



---

(b) Which material (P, Q or R) is best used to make a rubber hose? [1] 1/2

---

43. Mr. Lim carried out some tests on materials A, B and C. He recorded the results in the table below.

	Breaks when dropped	Can bend	Can stretch
Material A	✓		
Material B		✓	✓
Material C	✓	✓	

Study the table above carefully and answer the following questions.

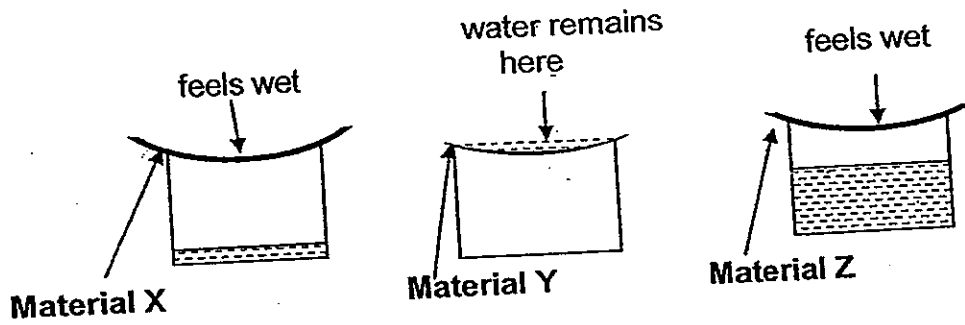
(a) Which material A, B or C is most suitable to make into a toy for a baby? [1]

---

(b) Give a reason for your answer for (a). [2]

---

44. Kim placed three sheets, each made from different material namely X, Y and Z, over the mouth of 3 identical bowls as shown in the diagram below. She then poured an equal amount of water onto each sheet. The results are shown in the diagram.



- (a) What do you think Kim was trying to find out from her experiment? [1]

---

---

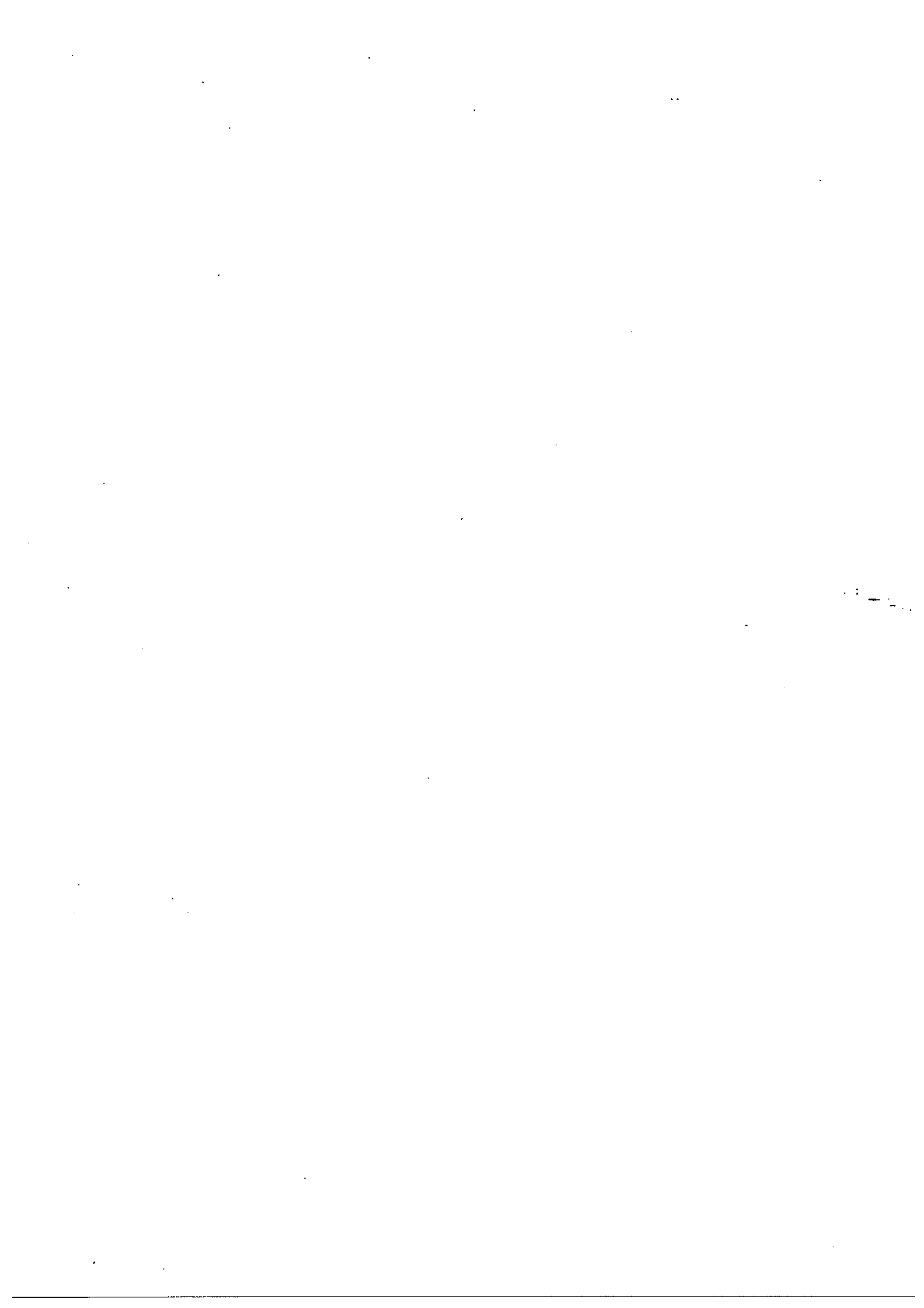
- (b) Which Material (X, Y or Z) is most suitable to make a raincoat? Give a reason for your choice. [2]

---

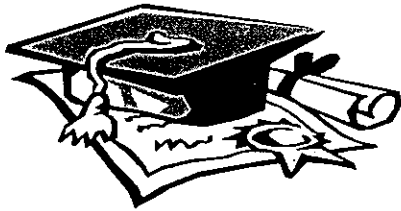
---

Score	3
-------	---

End of Paper





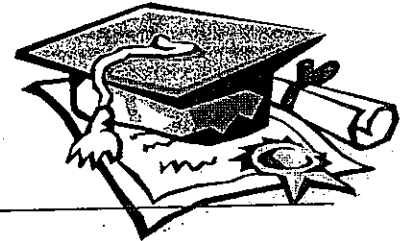


# ANSWER SHEET

**EXAM PAPER 2010**

**SCHOOL : NAN HUA PRIMARY  
SUBJECT : PRIMARY 3 SCIENCE**

**TERM : SEMESTRAL ASSESSMENT 1**



Q1	Q2	Q3	Q4	Q5	Q6	Q7	Q8	Q9	Q10	Q11	Q12	Q13	Q14	Q15	Q16	Q17
3	4	1	3	4	1	4	1	3	3	2	2	1	4	1	1	2

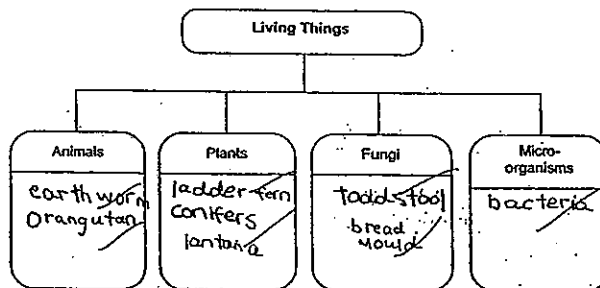
Q18	Q19	Q20	Q21	Q22	Q23	Q24	Q25	Q26	Q27	Q28	Q29	Q30
2	3	3	2	4	3	3	4	2	1	3	1	4

- Q31a) The caterpillar in set-up X will still be alive after 2 days.  
b) The caterpillar had air and food to stay alive.

Q32)

Living things	Non-living things
Meal worm	Teapot
Parrot	Basket
Donkey	Picture

Q33)



- Q34a) X:beak Y:wings  
b) The body covering of the bird is feathers.  
c) It can fly.

Q35)

Materials		
from plant parts	from animal parts	from the ground
rattan ✓ latex ✓ cotton ✓	leather ✓ silk ✓ lambskin ✓	diamond ✓ pebbles ✓

**Q36a) Plant D will survive after 1 week.**

**b) It is because the plant has air, water and sunlight to make food.**

**Q37a) Reproduce**

**b) Move by themselves**

**c) Respond to changes**

**d) Grow**

**Q38a) Mould has grown on the surface of the steamed bun.**

**b) Mould need water to grow.**

**Q39a) They are mammals.**

**b) They both drink water.**

**c) Animal Y does not eat meat but Animal X eats meat.**

**d) Living things need water and food.**

**Q40i) C**

**ii) D**

**iii) A**

**iv) B**

**Q41a) We can use plastic for material X.**

**b) It is transparent.**

**Q42a) It is transparent, it can be stretched easily.**

**b) We can use material Q.**

**Q43a) We can use material B.**

**b) It will not hurt the baby because it does not break when dropped.**

**Q44a) To find out which material absorb the most water.**

**b) We should use material Y because it is waterproof.**