



AI TONG SCHOOL

2008 SEMESTRAL ASSESSMENT (1)

PRIMARY THREE SCIENCE

DURATION : 1hr 30 min

DATE: 9th MAY 2008

INSTRUCTIONS

Do not open the booklet until you are told to do so.

Follow all instructions.

Answer all questions.

Name : _____ ()

Class : Primary _____

Parent's Signature : _____

Date : _____

Marks :

Practical Assessment	12
Written Assessment	88
Total	100

Section A (30 x 2 marks)

For each question from 1 to 30, four options are given. One of them is the correct answer. Make your choice (1, 2, 3 or 4). **Shade the correct oval (1, 2, 3 or 4) on the Optical Answer Sheet.**

1. The great variety of things around us is called _____
- (1) diversity
 - (2) differences
 - (3) classification
 - (4) characteristics
2. All plants and animals need _____ to survive.
- (1) air, food and land
 - (2) air, food and water
 - (3) air, sunlight and water
 - (4) food, sunlight and water
3. A dog runs away when a girl tries to use an umbrella to hit it. This shows that it can _____
- (1) die
 - (2) grow
 - (3) reproduce
 - (4) respond to stimuli

4. Animals move about _____.

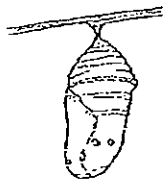
- A to get away from enemies
- B to look for food
- C to look for water

- (1) A only
- (2) B only
- (3) B and C only
- (4) A, B and C

5. The lion, chicken, dog and ant are similar because they _____.

- (1) live on land
- (2) have four legs
- (3) make their own food
- (4) protect their bodies with hair

6. The diagram below shows the pupa of a butterfly.
Which one of the following characteristics shows that the pupa is a living thing?



- (1) The pupa remains still.
- (2) It has a hard covering.
- (3) It hangs from a branch.
- (4) The pupa develops into a butterfly.

7. A robotic toy dog can wag its tail and bark when its head is patted. It can sit or run. Which of the following things can the robotic dog never do?

- A It cannot grow.
- B It cannot move.
- C It cannot reproduce.
- D It cannot respond to stimuli.

- (1) B only
- (2) C only
- (3) A and C
- (4) B and D

8. Janice told her mother that there were many colourful and sweet-smelling flowers in the park. Janice had used her sense of _____ to make the observation.

- (1) taste and sight
- (2) sight and smell
- (3) taste and touch
- (4) smell and touch

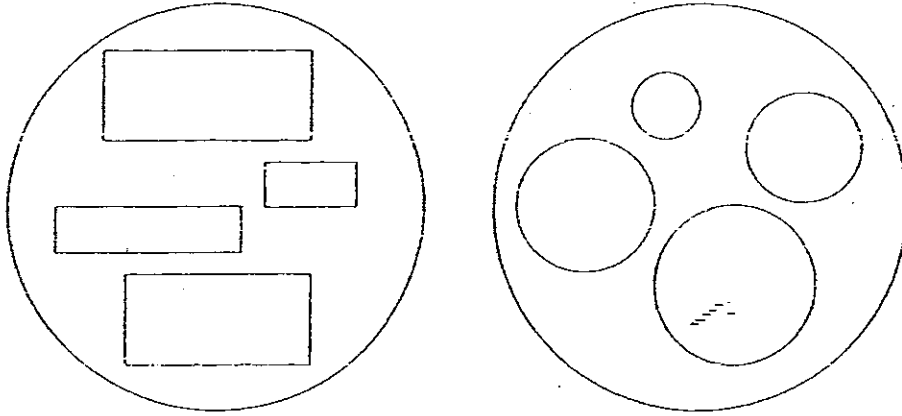
9. Amy was given a container of liquid. She used different senses to observe the liquid. Then, she noted her observations as follows:

- It is colourless.
- It has a strong smell.
- It has a sour taste.

The liquid is likely to be _____.

- (1) tea
- (2) water
- (3) vinegar
- (4) soy sauce

10. Alice cut out some pieces of cardboard. Then she classified them into 2 groups.



The cardboard pieces are grouped according to their _____.

- (1) sizes
- (2) shapes
- (3) colours
- (4) texture

11. Sally put the following animals into one group.



Penguin



Duck



Pigeon



Bat

Which one of the animals is not a bird?

- (1) Penguin
- (2) Duck
- (3) Pigeon
- (4) Bat

12. The table shows how some animals are classified.

Groups		
A Bird	B Mammal	C Fish
penguin	platypus	goldfish
seagull	bat	guppies

The animals are grouped according to _____.

- (1) the number of legs
- (2) the way they move
- (3) the ways they reproduce
- (4) their outer body coverings

13. The _____ looks very different from its parent when it is young.

- (1) dog
- (2) monkey
- (3) butterfly
- (4) elephant

14. A fish breathes through its _____.

- (1) fins
- (2) gills
- (3) lungs
- (4) scales

15. Which one of the following is a fish that gives birth?

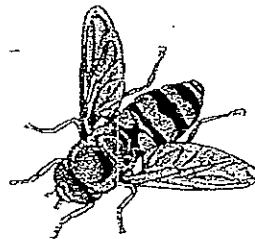
- (1) Seal
- (2) Salmon
- (3) Swordtail
- (4) Seahorse

16. Alan saw 4 animals in his garden.

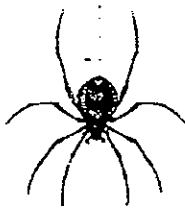
A



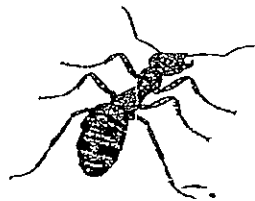
B



C



D



Which one of the animals is not an insect?

- (1) A
- (2) B
- (3) C
- (4) D

17. Samantha observed a cockroach and wrote the following statements.

- A It has wings.
- B It has six legs.
- C It has antennae.
- D It has three body parts.

Which statements tell her that a cockroach is an insect and not a bird or fish?

- (1) A, B and C only.
- (2) A, B and D only.
- (3) B, C and D only.
- (4) A, B, C and D.

18. Which 2 plants in the table are correctly classified?

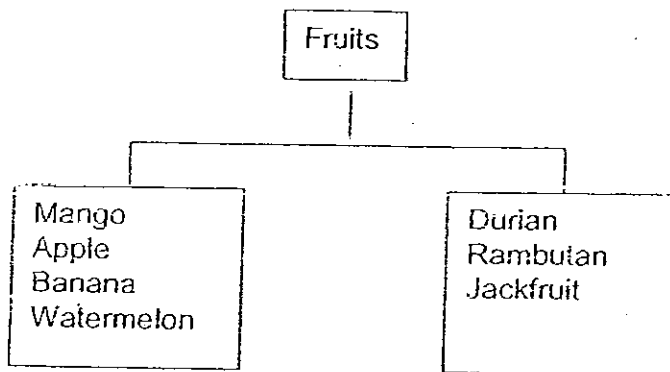
Plants		
	Grow on land	Grow in water
A	rose	elodea
B	elodea	water moss fern
C	carnation	bird's nest fern
D	lotus	water hyacinth

- (1) A
- (2) B
- (3) C
- (4) D

19. Which one of the following is a flowering plant?

- (1) bird's nest fern
- (2) maiden hair fern
- (3) dragon scales
- (4) balsam

20. The fruits are grouped according to whether they _____.



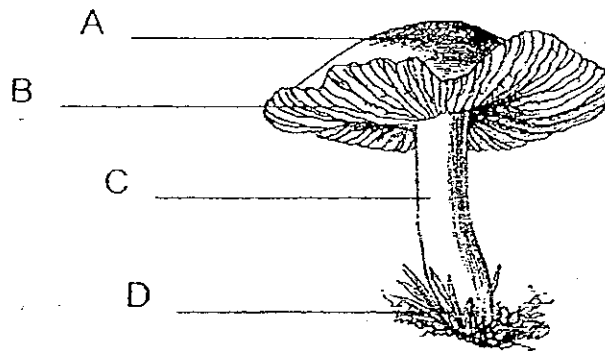
- (1) are edible or inedible
- (2) are fleshy or non-fleshy
- (3) have one seed or many seeds
- (4) have a smooth or rough covering

21. Four pupils wrote down examples of living things found in water. Who has the correct answer?

Sally	seahorse, hibiscus, water lily
David	octopus, water hyacinth, watermelon plant
Florence	jellyfish, carnation, lotus
Hanson	angelfish, tadpole, hydrilla

- (1) Sally
- (2) David
- (3) Florence
- (4) Hanson

22.



Where are the spores found?

- (1) A
- (2) B
- (3) C
- (4) D

23. Which pair of living things below has been correctly classified?

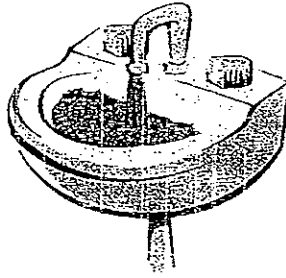
	Non-flowering plants	Fungi
A	maidenhair fern	toadstool
B	mould	mushroom
C	mushroom	orchid
D	moss	grass

- (1) A
- (2) B
- (3) C
- (4) D

24. Alice put a slice of bread in a box for a week. She observed something black growing on the bread. What has grown on the bread?

- (1) bracket fungi
- (2) jew's ear
- (3) mould
- (4) yeast

25.



Sinks are made of ceramic because it _____.

- (1) can float
- (2) is flexible
- (3) breaks easily
- (4) is hard and strong

26. Which one of the following objects is made up of only one material?

- (1) Car
- (2) Pen
- (3) Brick
- (4) Computer

27. Johnnie conducted a scratch test to compare the hardness of materials P, Q, R and S. The following results were obtained:

- A R can scratch S.
- B Q can scratch R.
- C P can scratch Q.

Which one of the following conclusions is wrong?

- (1) S is the softest material.
- (2) Q is the hardest material.
- (3) Q is harder than R and S.
- (4) R is harder than S but softer than P.

28.



What are two suitable materials that can be used to make a pair of goggles?

- (1) Glass and metal
- (2) Rubber and wood
- (3) Plastic and metal
- (4) Plastic and rubber

29. At a party, Amy needs to pry open the cover of a biscuit tin. She should use _____.

- (1) a toothpick
- (2) a metal fork
- (3) a plastic spoon
- (4) an ice cream stick

30. Which one of the following things is not made of the same material as the others?

- (1) Curtain
- (2) Towel
- (3) Raincoat
- (4) Bedsheet

Name: _____ ()

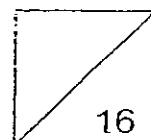
Class: P 3

Section B (8 x 2 marks)

Fill in the blanks with the correct answers. Use each word ONCE only.

thorax	birds	fungi	fruits
classification	reproduce	mammals	grow
head	characteristics	flexible	natural

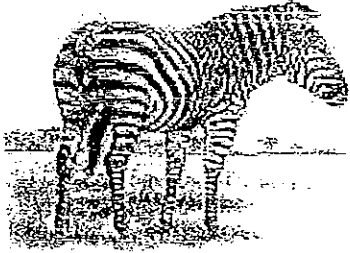
31. The _____ of things in a supermarket makes it easier for us to identify and locate the things.
32. When living things _____ they become bigger in size.
33. The antennae of an ant can be found on its _____.
34. The spiny anteater and duckbilled platypus are _____ which lay eggs.
35. An adult plant can produce _____ and flowers.
36. Some _____ feed on dead plants and animal matter.
37. Some materials are man-made while others are _____ materials.
38. When an object is _____, it can bend easily without breaking.



Section C (12 marks)

Answer all the questions in the spaces provided.

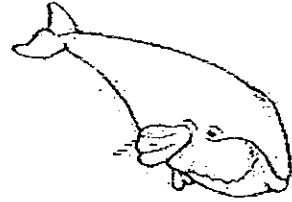
39. Mark has 6 picture cards of animals as shown below. He decided to classify them into 2 groups.



zebra



seahorse



whale



butterfly



octopus



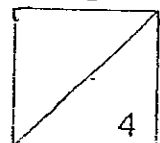
mouse

- (a) How can the animals be classified?
Write the name of each animal in the correct box.
There must be at least 2 animals in one box. [3]

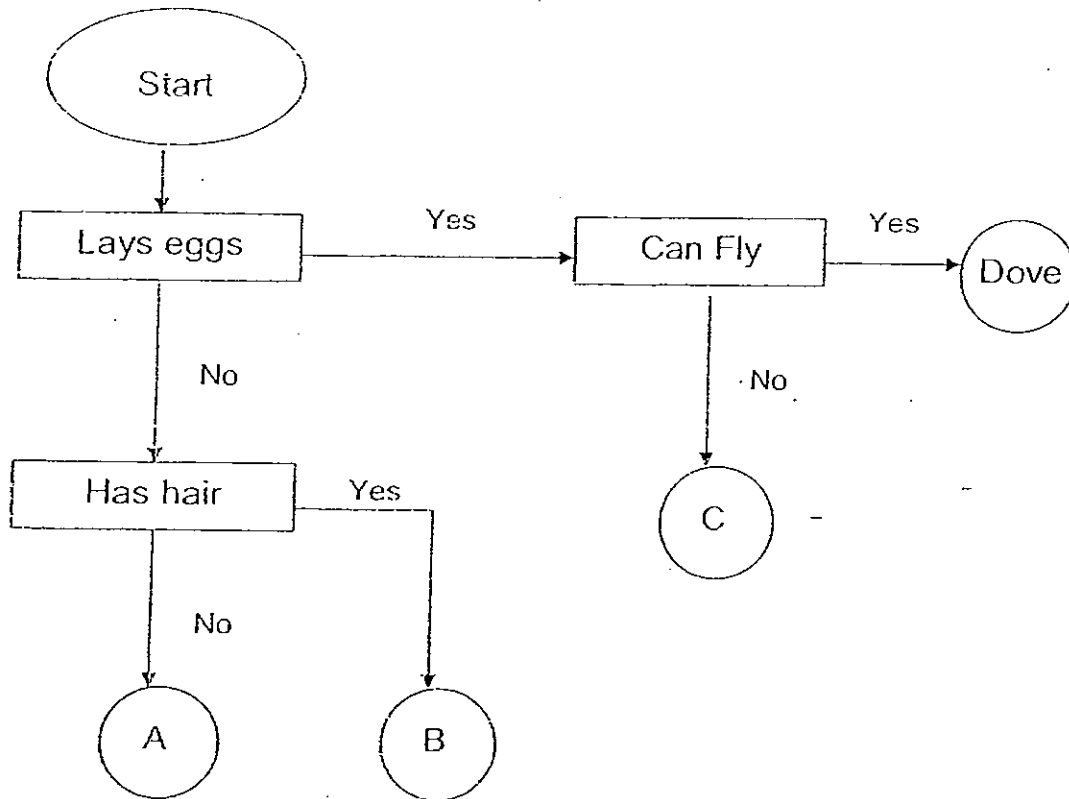
Group A

Group B

- (b) State one way in which the animals in Group A are different from those in Group B. [1]
-
-



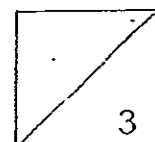
40. Study the following flow chart about animals by following the direction of the arrows.



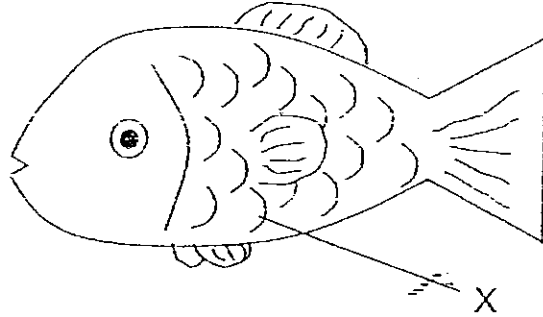
Match the animals given in the box below with the correct letters in the flowchart. [3]

Penguin	Guppy	Rabbit
---------	-------	--------

A	B	C



41. The diagram below shows a fish.

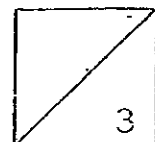


(a) Name the part labelled X. [1]

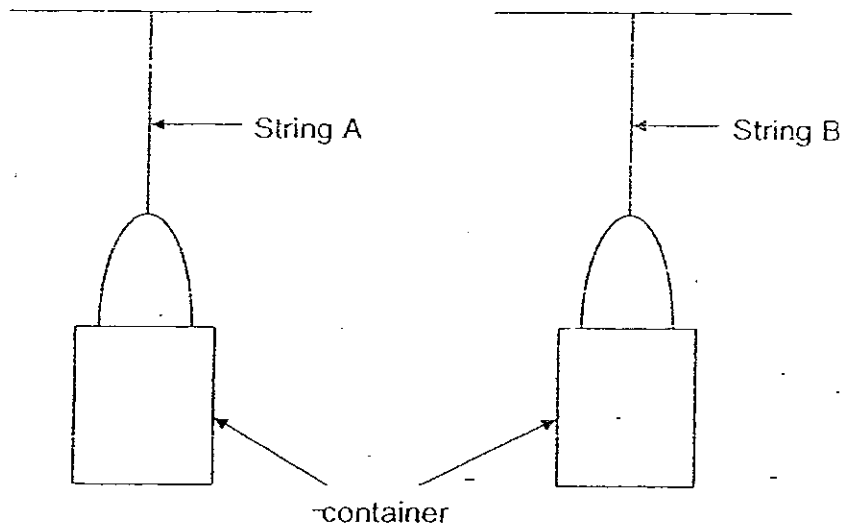
Part X is the _____.

(b) Put a tick in the correct box to show the outer body covering of each animal. [2]

Animals	Scales	Hair	Feather
sea lion			
sheep			
peacock			
koi			



42. A group of pupils had 2 kinds of strings. They carried out an experiment to compare the strength of the strings. They set up the experiment as shown in the diagram below.



They put marbles one at a time into each of the containers until the strings snapped. They repeated the experiment 2 more times to make sure that their results were accurate. They recorded the results in the table shown below.

	Number of marbles in container before the strings snapped		
	1 st trial	2 nd trial	3 rd trial
String A	14	12	14
String B	20	22	21

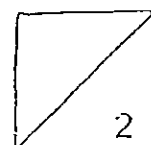
- (a) Which string is the stronger one?

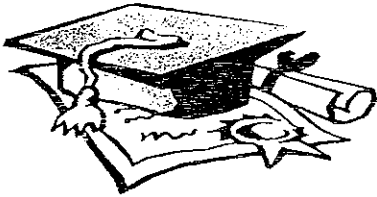
_____ [1]

- (b) Why do you say so?

_____ [1]

Have you checked your work?





ANSWER SHEET

EXAM PAPER 2008

SCHOOL : AITONG PRIMARY SCHOOL
SUBJECT : PRIMARY 3 SCIENCE

TERM : SA 1

Q1	Q2	Q3	Q4	Q5	Q6	Q7	Q8	Q9	Q10	Q11	Q12	Q13	Q14	Q15	Q16	Q17
1	2	4	4	1	4	3	2	3	2	4	4	3	2	3	3	3

Q18	Q19	Q20	Q21	Q22	Q23	Q24	Q25	Q26	Q27	Q28	Q29	Q30
1	4	4	4	2	1	3	4	3	2	4	2	3

31)classification 32)grow 33)head 34)mammals

35)fruits 36)fungi 37)natural 38)flexible

39)a)Group A: zebra, whale, mouse

Group B: seahorse, butterfly, octopus

b)The animals in Group A reproduce by diving birth to their young alive but Group B reproduce by laying eggs.

40)A: Guppy B: Rabbit C: Penguin

41)a)scales

b)sea lion → Hair

sheep → Hair

peacock → Feather

koi → Scales

42)a)It is String B.

b)It can carry more marbles than String A.