



SA1

Rosyth School
First Semestral Assessment for 2004
Science
Primary 3



Name: _____

Class: Pr 3- _____ Register No. _____

Date: 12.5.2004 Parent's Signature: _____

Total time allocated for booklets A & B : 1 h 30 min

Booklet A

Instructions to Pupils:

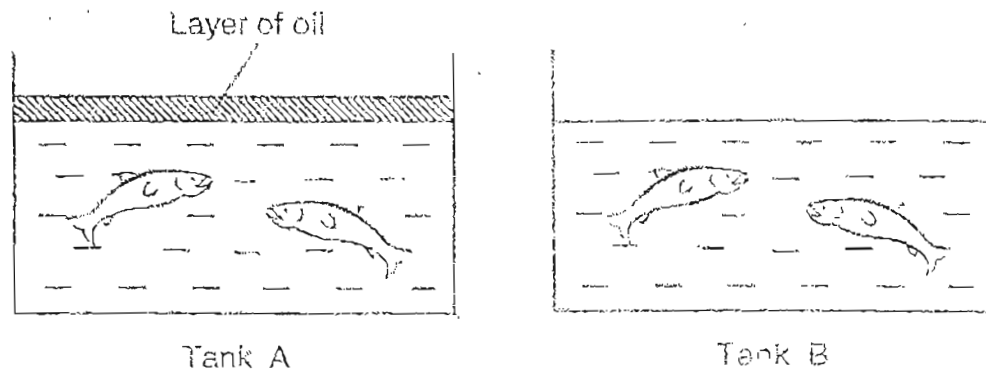
1. Do not open this booklet until you are told to do so.
2. Follow all instructions carefully.

* This paper consists of 24 pages altogether.

PART I (60 marks)

For each question from 1 to 30, four options are given. One of them is the correct answer. Make your choice (1, 2, 3 or 4). Shade the correct oval (1, 2, 3, or 4) on the Optical Answer Sheet.

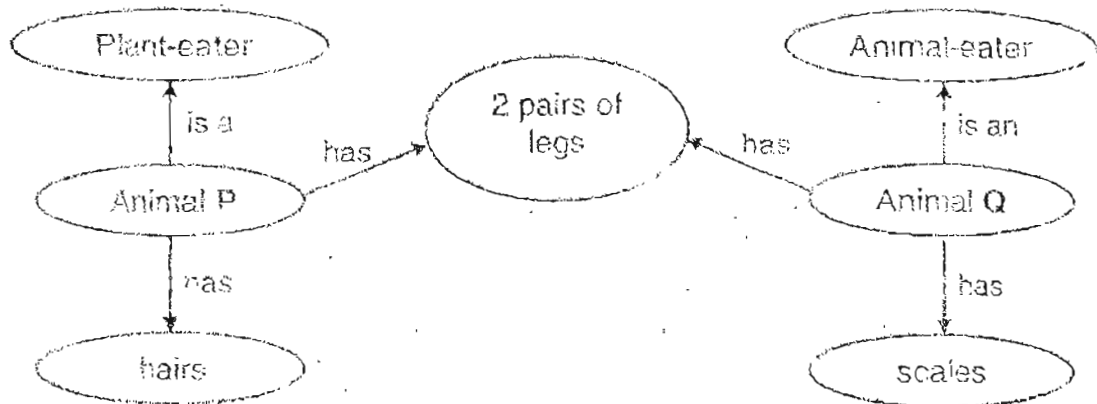
- 1 Look at the pictures below. Ali has added a layer of oil to Tank A.



After a day, the fish in Tank B were still alive, but the fish in Tank A were found dead. What does this show?

- (1) Oil is poisonous to fish.
 - (2) Fish need air to survive.
 - (3) Fish need food to survive.
 - (4) The fish in Tank B need more air than those in Tank A.
- 2 Which one of the following animals reproduce by giving birth?
- (1) Sealion
 - (2) Platypus
 - (3) Penguin
 - (4) Mosquito

3 Study the concept map carefully.



Which one of the following best represents animals P and Q?

	Animal P	Animal Q
(1)	Sealion	Turtle
(2)	Giraffe	Crocodile
(3)	Lion	Guppy
(4)	Zebra	Snake

4 Which one of the following group of animals does NOT have any outer coverings?

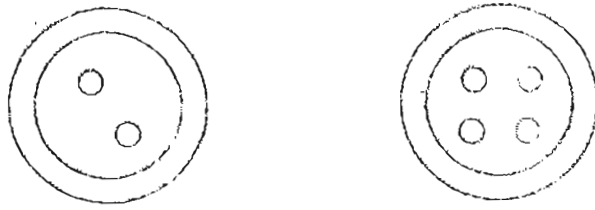
- (1) Slug, frog, earthworm
- (2) Snake, prawn, zebra
- (3) Tortoise, lizard, sheep
- (4) Dolphin, bat, ostrich

5 Which of these statements about bacteria are true?

- A: All bacteria are harmful to Man.
- B: Most bacteria can be seen with our naked eyes.
- C: Bacteria are present everywhere.
- D: Bacteria are found in different shapes.

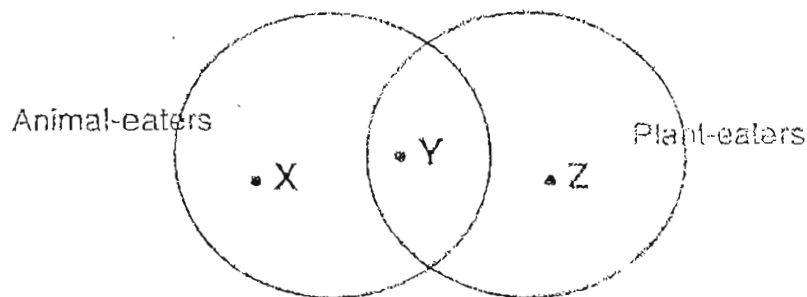
- (1) A and B only.
- (2) C and D only.
- (3) A, C and D only.
- (4) A, B, C and D.

- 6 The picture below shows two buttons.



The two buttons above have at least one similarity and one difference.
Based on what you can see from the picture above, both


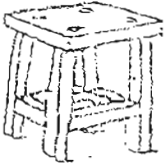
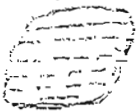



- (1) are of the same shape but are different in size
 - (2) are of the same shape but have different number of holes
 - (3) are of the same size but are different in shape
 - (4) have the same number of holes but are different in size
- 7 Study the Venn diagram below.



Which one of the following correctly represents 'X', 'Y' and 'Z'?

	X	Y	Z
(1)	Snake	Deer	Giraffe
(2)	Zebra	Crow	Hippopotamus
(3)	Lizard	Rabbit	Owl
(4)	Cheetah	Chimpanzee	Elephant

8 Study the two groups of objects shown below.

Group A	Group B
 Pizza	 Stool
 Cream cracker	 Teddy bear
 Cabbage	 Clock

How are the objects grouped?

The objects are grouped according to _____

- (1) their colour
- (2) their weight
- (3) how hard they are
- (4) whether they can be eaten or not

9 Which pairs of animals are NOT in the same animal group?

- (1) Whale and bat
- (2) Crow and eagle
- (3) Hamster and rabbit
- (4) Penguin and sealion

10 Which of the following statements are true of all birds?

- A: All birds have beaks.
- B: All birds are covered with feathers.
- C: All birds have wings and all can fly.
- D: All birds have two legs and two claws.

- (1) A and B only
- (2) A and C only
- (3) A, B and C only
- (4) A, B, C and D

11 Which of the following animals are fish?

- A: Seahorse
- B: Whale
- C: Goldfish
- D: Mudskipper

- (1) B and C only
- (2) A, C and D only
- (3) A, B and C only
- (4) B, C and D only

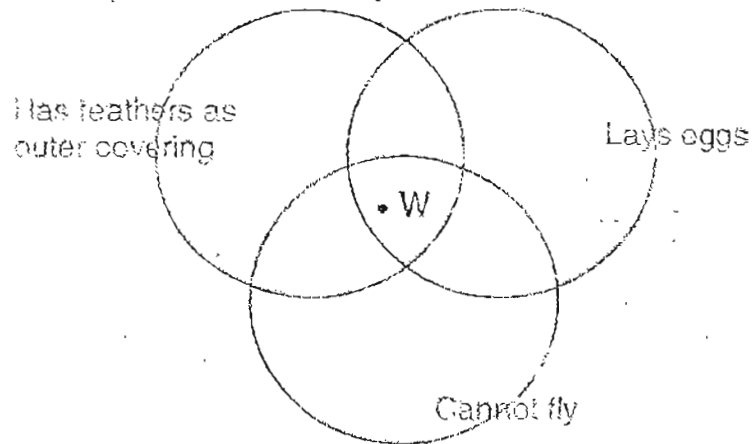
12 Study the classification table below.

Group Y	Group Z
Rhinoceros	Mushroom
Rat	Bread Mould
Hamster	Mole

Which one of the following living things is wrongly classified?

- (1) Mole
- (2) Hamster
- (3) Rhinoceros
- (4) Bread Mould

13 Study the Venn diagram below.



Which one of the following animals correctly represents Animal 'W'?

- (1) Emu
- (2) Eagle
- (3) Sparrow
- (4) Peacock

14 Which one of the following animals does not move in the ways as shown in the table below?

	Animal	Type of movement			
		Crawl	Fly	Hop	Swim
(1)	Swan		✓		✓
(2)	Toad			✓	✓
(3)	Ant	✓	✓	✓	
(4)	Sparrow		✓	✓	

15 Which one of the following animals live in water all the time?

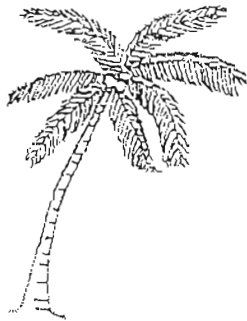
- (1) Seal
- (2) Crab
- (3) Prawn
- (4) Starfish

16 Which two types of outer coverings are most effective in protecting the animals from their enemies?

- (1) Hair and Scales
- (2) Scales and Shells
- (3) Feathers and Hair
- (4) Feathers and Shells

17 Which one of the following trees provides the most shade?

(1)



(2)



(3)



(4)



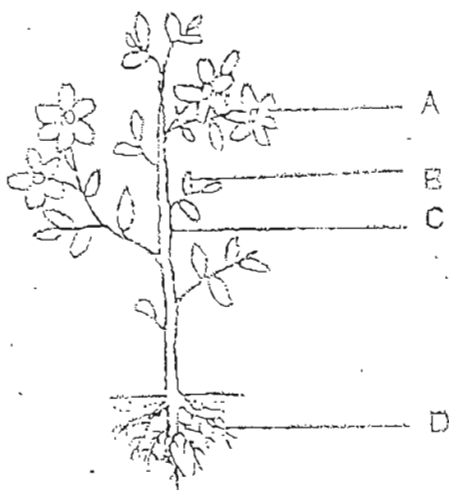
18 Below is a description of a plant.

I am a land plant.
I have flowers which grow singly.
My flowers give off a nice smell.

Which one of the following is the plant likely to be?

- (1) Rose
- (2) Lotus
- (3) Jasmine
- (4) Rafflesia

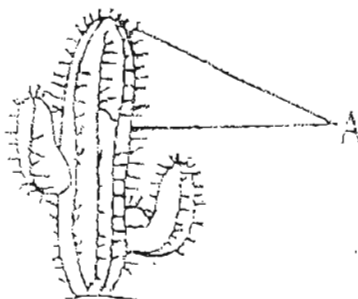
19 The picture below shows a plant.



Which one of the following correctly represents the parts of the plant?

	A	B	C	D
(1)	Flower	Leaf	Stem	Root
(2)	Leaf	Stem	Root	Flower
(3)	Stem	Root	Flower	Leaf
(4)	Root	Flower	Leaf	Stem

20 The picture below shows a cactus plant.



The part labelled 'A' on the cactus plant are _____

- ~~(5)~~ roots
- ~~(6)~~ fruits
- ~~(7)~~ thorns
- ~~(8)~~ leaves

21 Study the pictures of the leaves shown below.



Leaf A

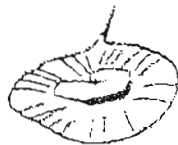


Leaf B

Which one of the following descriptions correctly matches the edges of the leaves?

	Leaf A	Leaf B
(1)	Lobed-edged	Toothed-edged
(2)	Entire-edged	Lobed-edged
(3)	Lobed-edged	Entire-edged
(4)	Toothed-edged	Lobed-edged

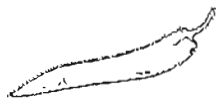
22 Look at the pictures shown below.



Angsana



Carrot



Chilli



Tomato



Casuarina

How many of them are fruits?

- (1) 2
- (2) 3
- (3) 4
- (4) 5

23 Micro-organisms are too tiny to be seen with just our eyes. Which one of the following instruments can help us see micro-organisms better?

- (1) Telescope
- (2) Microscope
- (3) Stethoscope
- (4) Kaleidoscope

24 The picture below shows a mushroom.



Which one of the following belongs to the same group of living things as the mushroom?

- (1) Moss
- (2) Orchid
- (3) Jew's ears
- (4) Ladder's fern

25 Study the table below.

Group	Plants
P	Ixora, Lantana, Allamanda
Q	Moss, Stag's Horn Fern, Bird's Nest Fern

Which one of the following statements best describes Group P and Q?

- (1) Plants in Group P can make food while plants in Group Q cannot make food.
- (2) Plants in Group P are land plants while plants in Group Q are water plants.
- (3) Plants in Group P are flowering plants while plants in Group Q are non-flowering plants.
- (4) Plants in Group P are poisonous plants while plants in Group Q are non-poisonous plants.

26 Which one of the following pictures does **not** belong to the same group as the rest?

(1)



Puff balls

(2)



Bacteria

(3)



Bracket fungus

(4)



Rubber duck

27 Study the table below.

Group G	Water lily, Cattail
Group H	Water hyacinth, Water lettuce

Which one of the following pairs is placed in the correct group?

	Group G	Group H
(1)	Arrowhead	Duckweed
(2)	Duckweed	Arrowhead
(3)	Hydrilla	Duckweed
(4)	Arrowhead	Hydrilla

28 Which one of the following materials comes from plants?

- (1) Fur
- (2) Silk
- (3) Wool
- (4) Cotton

- 29 The table below shows the main material used to make each object. Which one of the following pairs correctly shows the material that the object is made of?

	Object	Material used
(1)	Spoon	Paper
(2)	Raincoat	Wool
(3)	Bedsheet	Rubber
(4)	Frying pan	Metal

- 30 Jerry collected three balls, A, B and C. Each ball is made of a different material. He dropped each ball from the same height onto a hard floor to see whether it bounces.

Ball	Material
A	Plastic
B	Rubber
C	Plasticine

Which of the balls bounced?

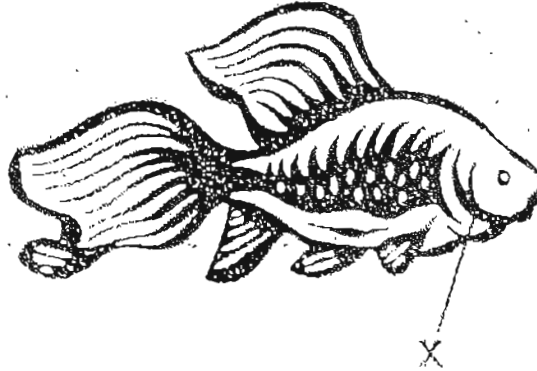
- (1) A and B only
 (2) A and C only
 (3) B and C only
 (4) A, B and C

End of Booklet A

PART II (40 marks)

For questions 31 to 46, write your answers in this booklet.

31 Refer to the diagram below and fill in each blank with a suitable word. (2 marks)



The part marked 'X' is the gill cover. Beneath it, there are many red, thin lines called _____ . These structures help the fish to _____ .

32 Study the classification table below.

Animals			
A	B	C	D
Swordtail	Dragonfly	Whale	Mynah
Guppy	Mosquito	Seal	Parrot
Shark	Cockroach	Platyfish	Eagle

Which animal groups do A, B, C and D represent? (2 marks)

A: _____

B: _____

C: _____

D: _____

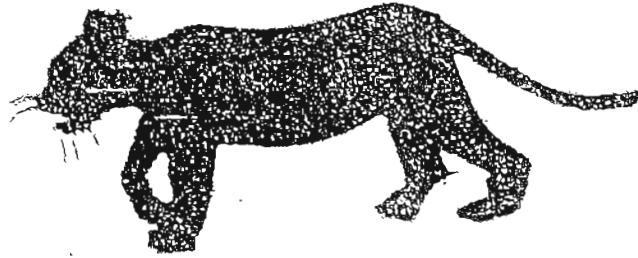
33 Fill in each blank with a suitable word. (3 marks)

Diversity is the great variety of things around us. Things around us are either living or non-living things. Living things can be classified into four groups. They are _____, animals, _____ and _____.

34 (a) Give one reason why animals need to move about. (1 mark)

(b) Other than living things being able to move by themselves, write down one other characteristic of living things. (1 mark)

35 The picture below shows a shadow of an animal.



Read the following statements about this animal. Write "True" or "False" in the brackets provided. (2 marks)

- (a) This animal has four legs. ()
- (b) This animal does not have any ears. ()
- (c) This animal does not have any whiskers. ()
- (d) This animal has the same shape as a cat. ()

36 Study the classification table below.

Group A	Group B
Bear	Caterpillar
Chicken	Grasshopper
Human	Deer
Rat	Horse

a) Write down a suitable heading for each of the two groups (2 marks)

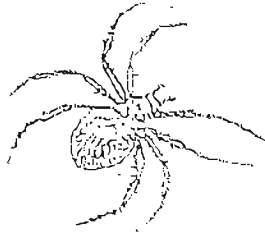
Group A: _____

Group B: _____

b) Which group (A or B) would you place the following two animals? (1 mark)

	Animal	Group
(i)	Monkey	
(ii)	Goat	

37 Based on only what you can see from the pictures, write down one similarity and one difference between Animal A and Animal B. (Do not compare their sizes and shapes.) (2 marks)



Animal A

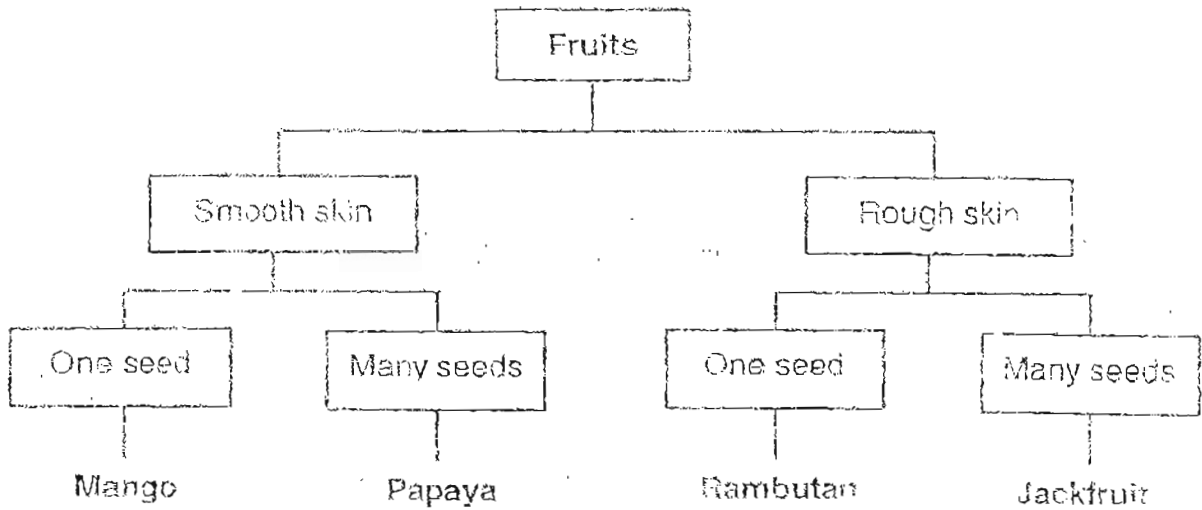


Animal B

Similarity: _____

Difference: _____

38 Study the classification table below.



(a) Based on the classification table,

(i) describe the characteristics of the papaya. (1 mark)

(ii) state one way in which the rambutan and jackfruit are similar. (1 mark)

(b) When you cut open a fruit, you will usually see seeds in it. Why are seeds important to the plant? (1 mark)

39 Study the statements below carefully. Write "True" for every correct statement and "False" for every incorrect statement. (2 marks)

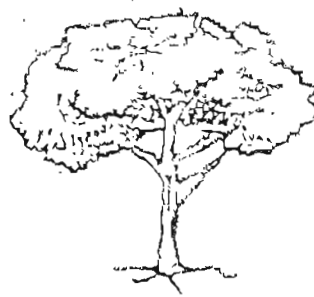
(a) All plants have leaves which are green in colour.

(b) All plants produce flowers only during a certain time of the year.

(c) The roots of a mangrove tree grow out of the mud surface to help the plant breathe better.

(d) Trees and shrubs have strong stems to enable them to stand upright.

40 Look at the pictures of the two trees below



Tree Y



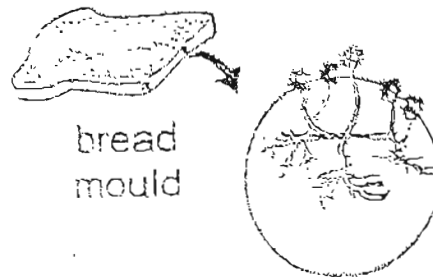
Tree Z

Based on what you can see only, state two differences between Tree Y and Tree Z. (2 marks)

(a) _____

(b) _____

- 41 A slice of bread was left in the kitchen. After a few days, dark patches of mould started to appear on the bread.

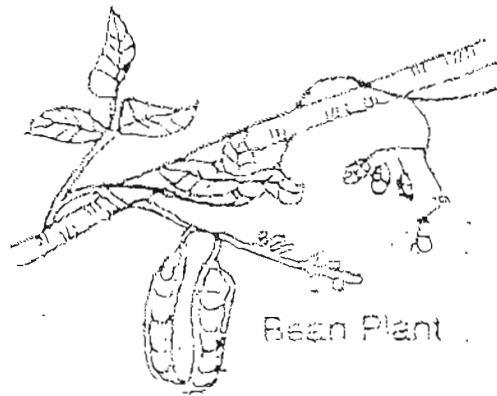


- (a) Which group of living things does the bread mould belong to? (1 mark)

- ~~(a)~~ How does this group of living things reproduce? (1 mark)

- (b) How is a mould different from a plant in the way it obtains its food? (1 mark)

42 The diagram below shows a bean plant.



The bean plant has a weak stem and twines round a support to stay upright.

(a) Suggest a reason why plants have to stay upright. (1 mark)

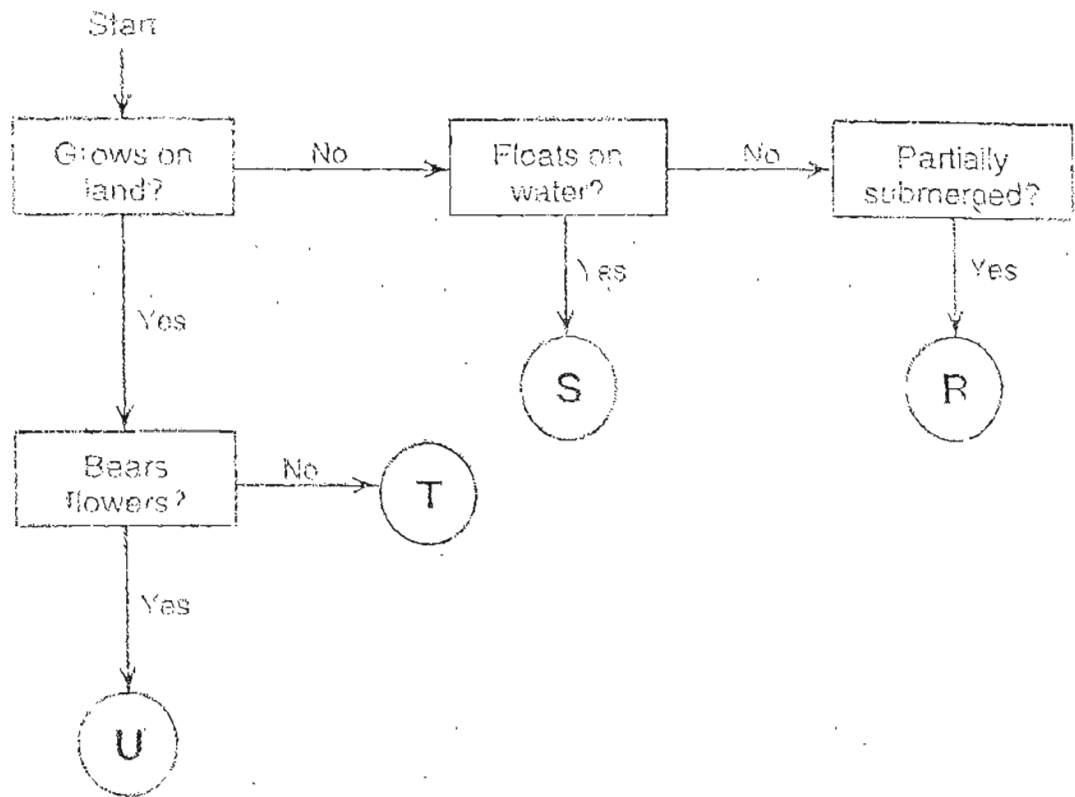
(e) The leaves, stems and fruits of the bean plant are green. What gives the plant this colour? (1 mark)

43 Some living things are so small that we cannot see them with our eyes. These tiny living things are known as micro-organisms.

(a) State one way in which micro-organisms are harmful to Man. (1 mark)

(b) State one way in which micro-organisms are useful to Man. (1 mark)

44 Study the flow chart below carefully.



Identify the letter that represents each of the following plant. (4 marks)

- (a) Ixora : _____
- (b) Cattail : _____
- (c) Duckweed : _____
- (d) Maidenhair Fern : _____

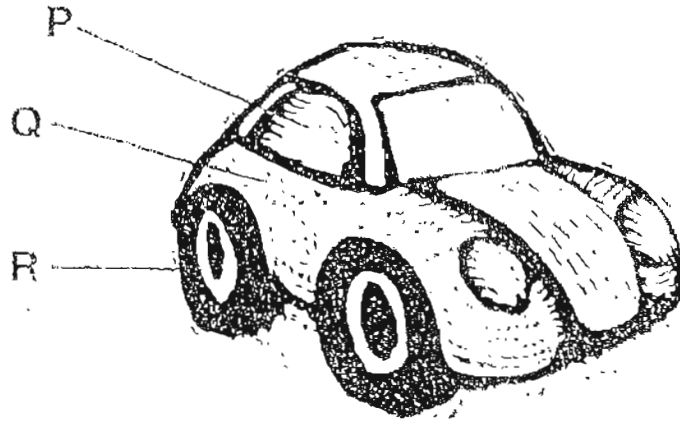
45 Study the table below carefully.

Object	Property of Object					
	Flexible		Can see through		Absorb water	
	Yes	No	Yes	No	Yes	No
Balloon	✓			✓		✓
Food wrap	✓		✓			✓
Chopsticks		✓		✓	✓	
Window pane		✓	✓			✓

(a) From the table, which object is flexible, transparent and is waterproof? (1 mark)

(b) Name a material that is most suitable to make 'chopsticks'. (1 mark)

46 The picture below shows a car.



(a) What materials are the parts, 'P', 'Q' and 'R' made of? (3 marks)

Part P : _____

Part Q : _____

Part R : _____

(b) Why is Part 'P' made of the material you mentioned in 46(a)? (1 mark)

End of paper

